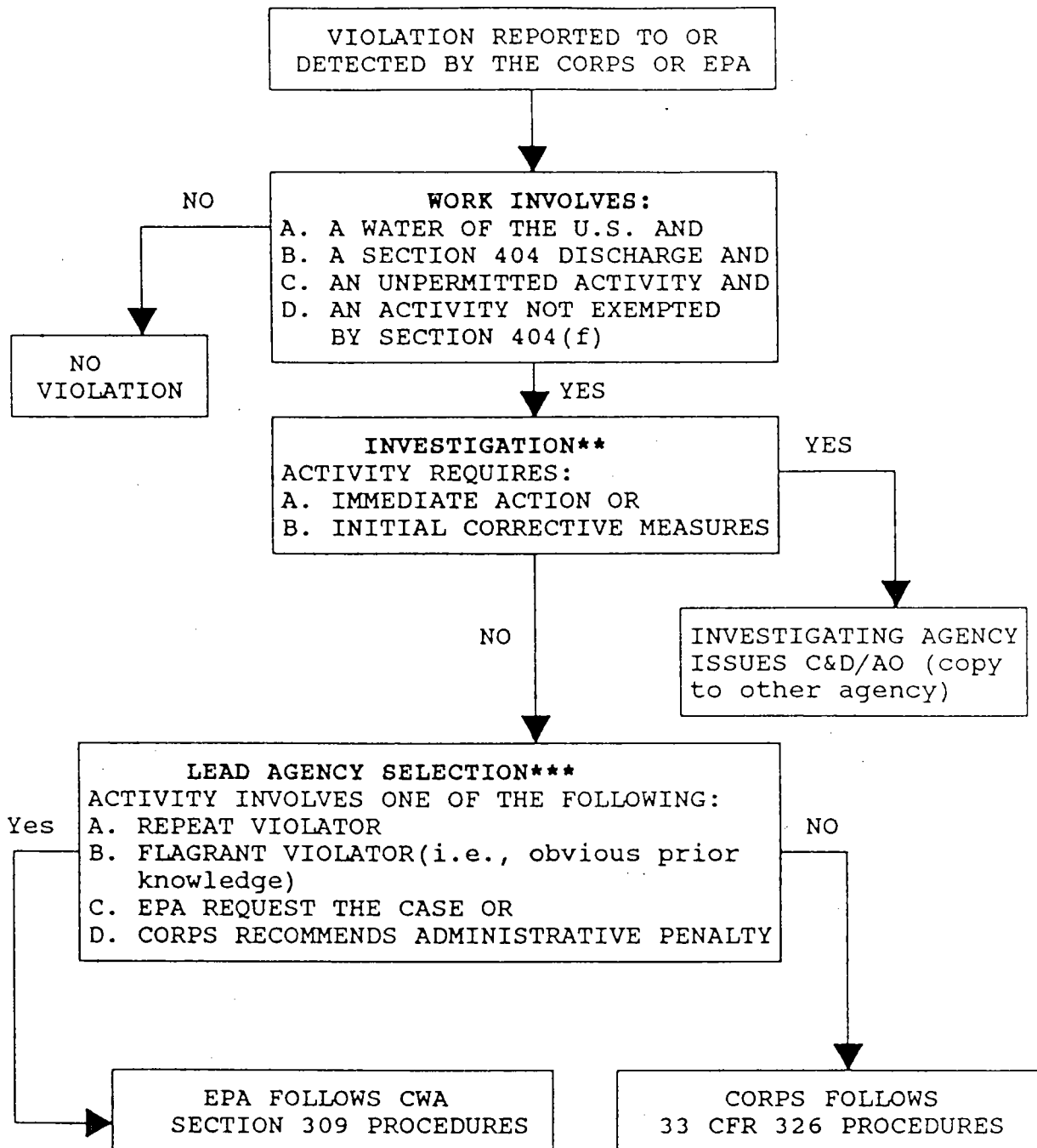


**CORPS/EPA ENFORCEMENT PROCEDURES  
FOR SECTION 404 UNPERMITTED VIOLATIONS\***



- \* Enforcement procedures for permit condition violation cases are set forth at Part III.D.3. and III.D.4.
- \*\* Procedures for investigating unpermitted activity cases are set forth at Part III.B.
- \*\*\* Examples of situations in which "C" & "D" might arise include cases which are important due to deterrent value, due to the violation occurring in a critical priority resource or in an advanced identification area, involving an uncooperative individual, etc.