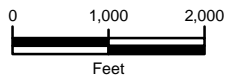
 Project Location (22.16 ac.±)



Source(s): USGS Topographic Survey, Bakersville, FL. Quadrangle (1994); USGS The National Map

Disclaimer: The information depicted on this figure is for conceptual purposes only, serves to aid a licensed engineer or geologist in rendering professional services, and is subject to review and approval by appropriate regulatory agencies.

USGS The National Map: National Boundaries Dataset, National Elevation Dataset, Geographic Names Information System, National Hydrography Dataset, National Land Cover Database, National Structures Dataset, and National Transportation Dataset; U.S. Census Bureau - TIGER/Line; HERE Road Data



**ENVIRONMENTAL SERVICES, INC.**

7220 Financial Way, Suite 100  
Jacksonville, Florida 32256  
(904) 470-2200  
(904) 470-2112 Fax

[www.environmentalservicesinc.com](http://www.environmentalservicesinc.com)

Project Location

# Tomaka Pines

St. Johns County, Florida

Project: EJ14438.01

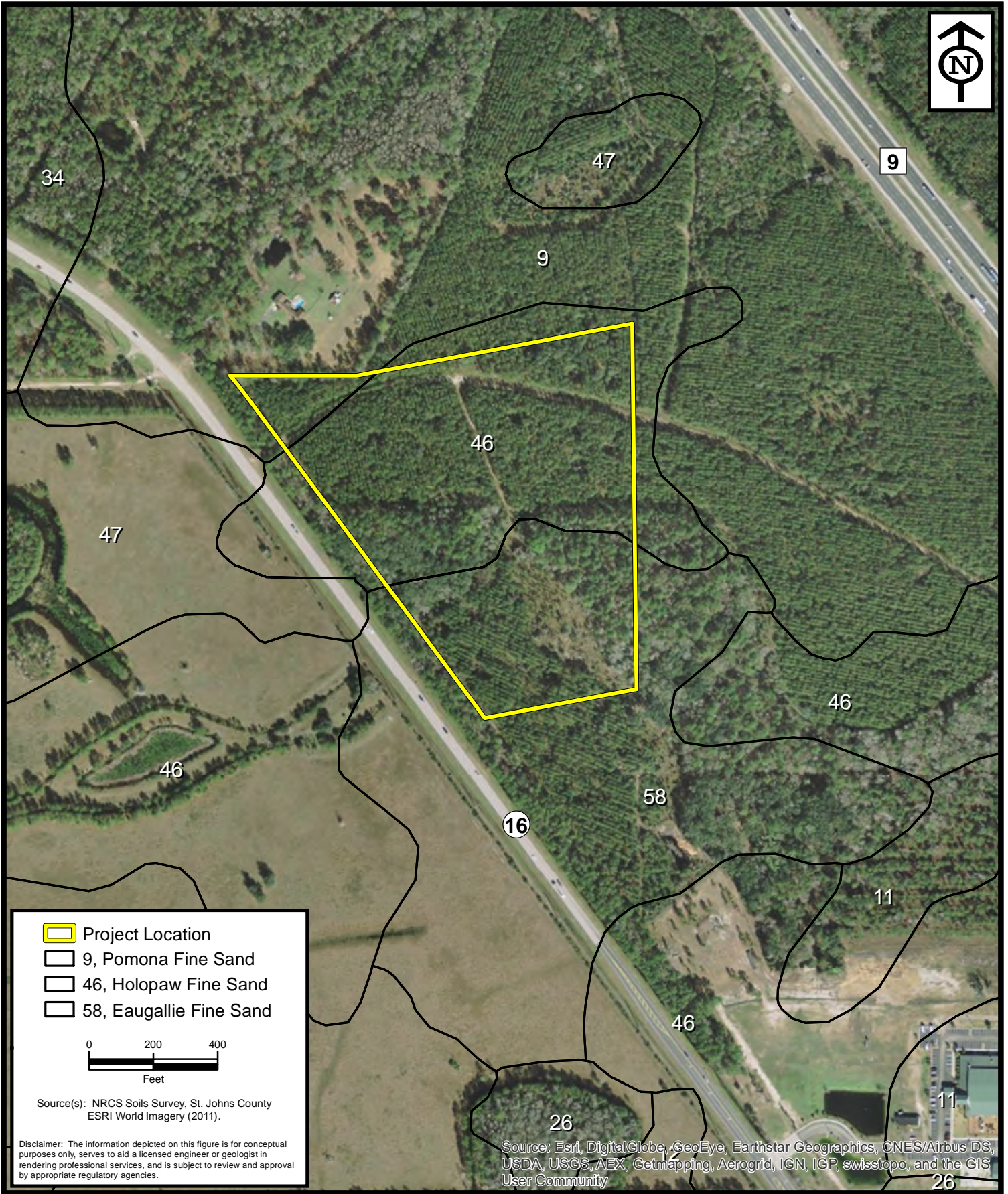
Date: Sep. 2016

Drawn By: AVL

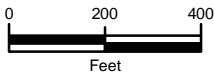
Checked By: JRN

Approved By: BAA

Figure: 1



- Project Location
- 9, Pomona Fine Sand
- 46, Holopaw Fine Sand
- 58, Eaugallie Fine Sand



Source(s): NRCS Soils Survey, St. Johns County  
ESRI World Imagery (2011).

Disclaimer: The information depicted on this figure is for conceptual purposes only, serves to aid a licensed engineer or geologist in rendering professional services, and is subject to review and approval by appropriate regulatory agencies.

Source: Esri, DigitalGlobe, GeoEye, Earthstar Geographics, CNES/Airbus DS, USDA, USGS, AEX, Getmapping, Aerogrid, IGN, IGP, swisstopo, and the GIS User Community



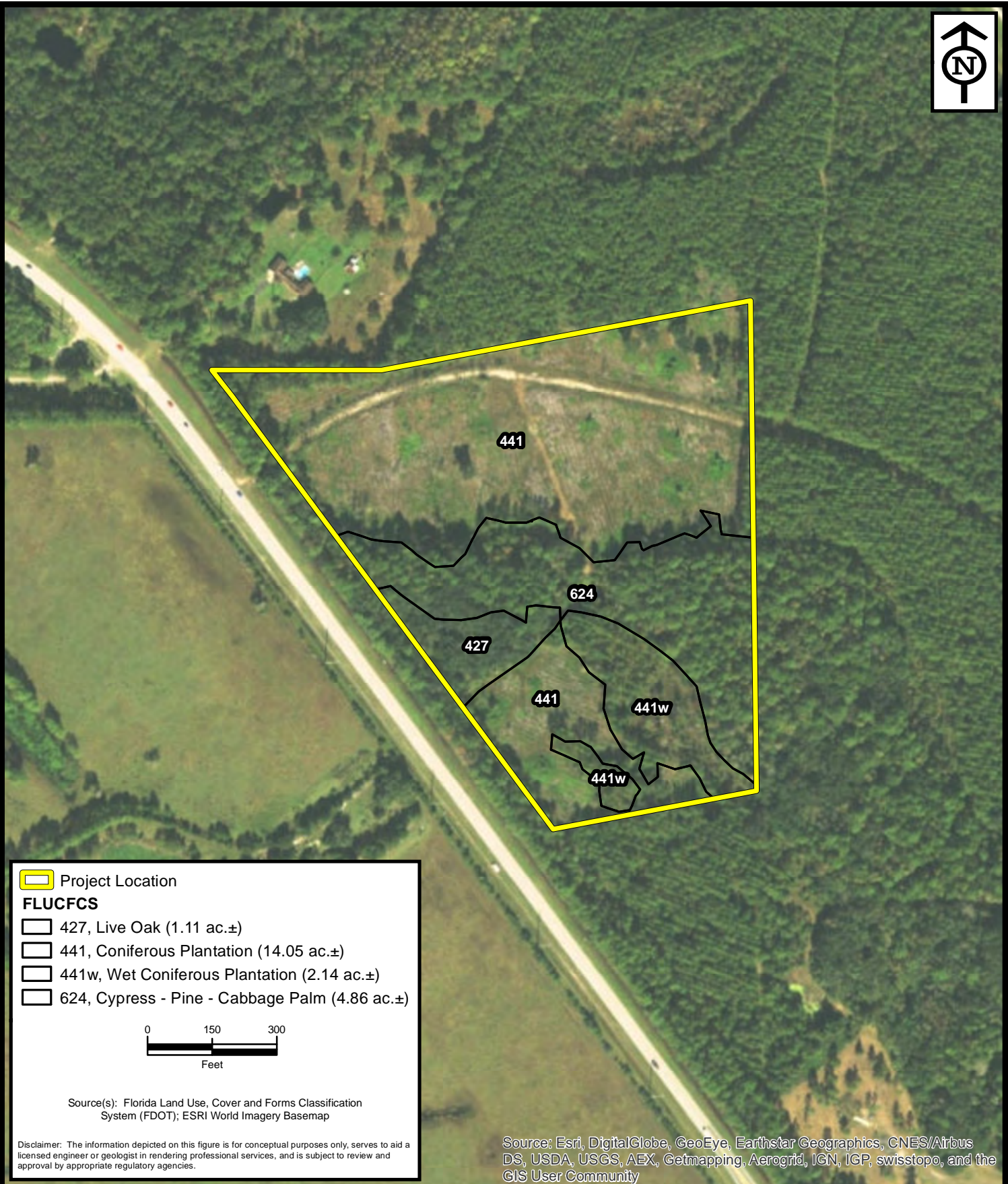
**ENVIRONMENTAL SERVICES, INC.**

7220 Financial Way, Suite 100  
Jacksonville, Florida 32256  
(904) 470-2200  
(904) 470-2112 Fax

[www.environmentalservicesinc.com](http://www.environmentalservicesinc.com)

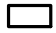
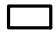
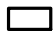

NRCS Soils  
**Nacana/S.R. 16 Property**  
St. Johns County, Florida

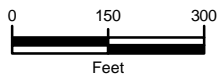
Project:	EJ14438.00
Date:	Mar. 2015
Drwn/Chkd:	KWB/JRN
Figure:	2



 Project Location

**FLUCFCS**

-  427, Live Oak (1.11 ac.±)
-  441, Coniferous Plantation (14.05 ac.±)
-  441w, Wet Coniferous Plantation (2.14 ac.±)
-  624, Cypress - Pine - Cabbage Palm (4.86 ac.±)



Source(s): Florida Land Use, Cover and Forms Classification System (FDOT); ESRI World Imagery Basemap

Disclaimer: The information depicted on this figure is for conceptual purposes only, serves to aid a licensed engineer or geologist in rendering professional services, and is subject to review and approval by appropriate regulatory agencies.

Source: Esri, DigitalGlobe, GeoEye, Earthstar Geographics, CNES/Airbus DS, USDA, USGS, AEX, Getmapping, Aerogrid, IGN, IGP, swisstopo, and the GIS User Community



**ENVIRONMENTAL SERVICES, INC.**

7220 Financial Way, Suite 100  
Jacksonville, Florida 32256  
(904) 470-2200  
(904) 470-2112 Fax

[www.environmentalservicesinc.com](http://www.environmentalservicesinc.com)

Existing Site Conditions

# Tomaka Pines

St. Johns County, Florida

Project: EJ14438.01

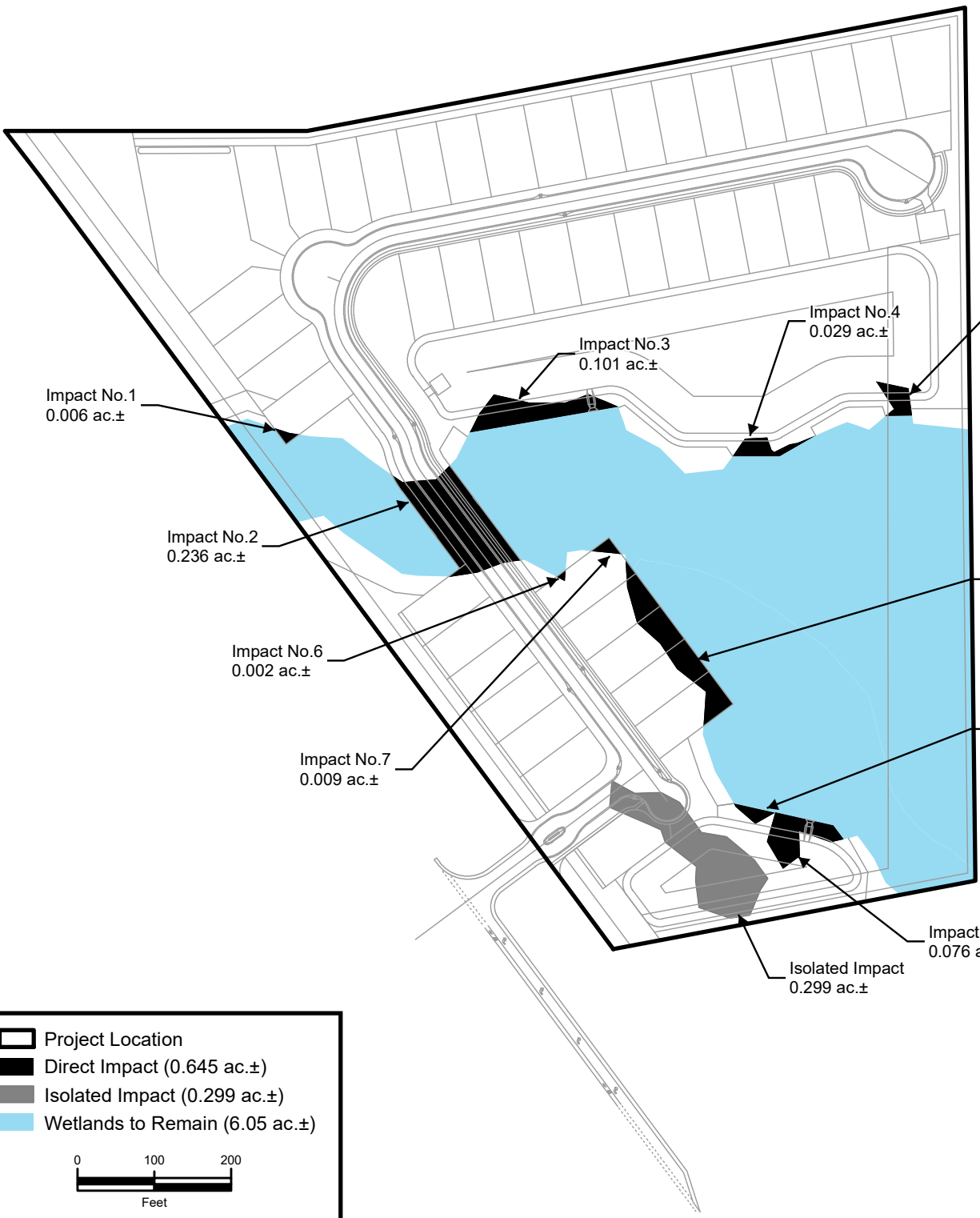
Date: Sep. 2016

Drawn By: AVL

Checked By: JRN

Approved By: BAA

Figure: 3



Source(s): Dominion Engineering Group, Inc.

Disclaimer: The information depicted on this figure is for conceptual purposes only, serves to aid a licensed engineer or geologist in rendering professional services, and is subject to review and approval by appropriate regulatory agencies.

**ENVIRONMENTAL SERVICES, INC.**  
 7220 Financial Way, Suite 100  
 Jacksonville, Florida 32256  
 (904) 470-2200  
 (904) 470-2112 Fax  
 www.environmentalservicesinc.com

Proposed Site Conditions

## Tomaka Pines

St. Johns County, Florida

Project:	EJ14438.01
Date:	Mar. 2017
Drawn By:	AA
Checked By:	JRN
Approved By:	BAA
Figure:	4