

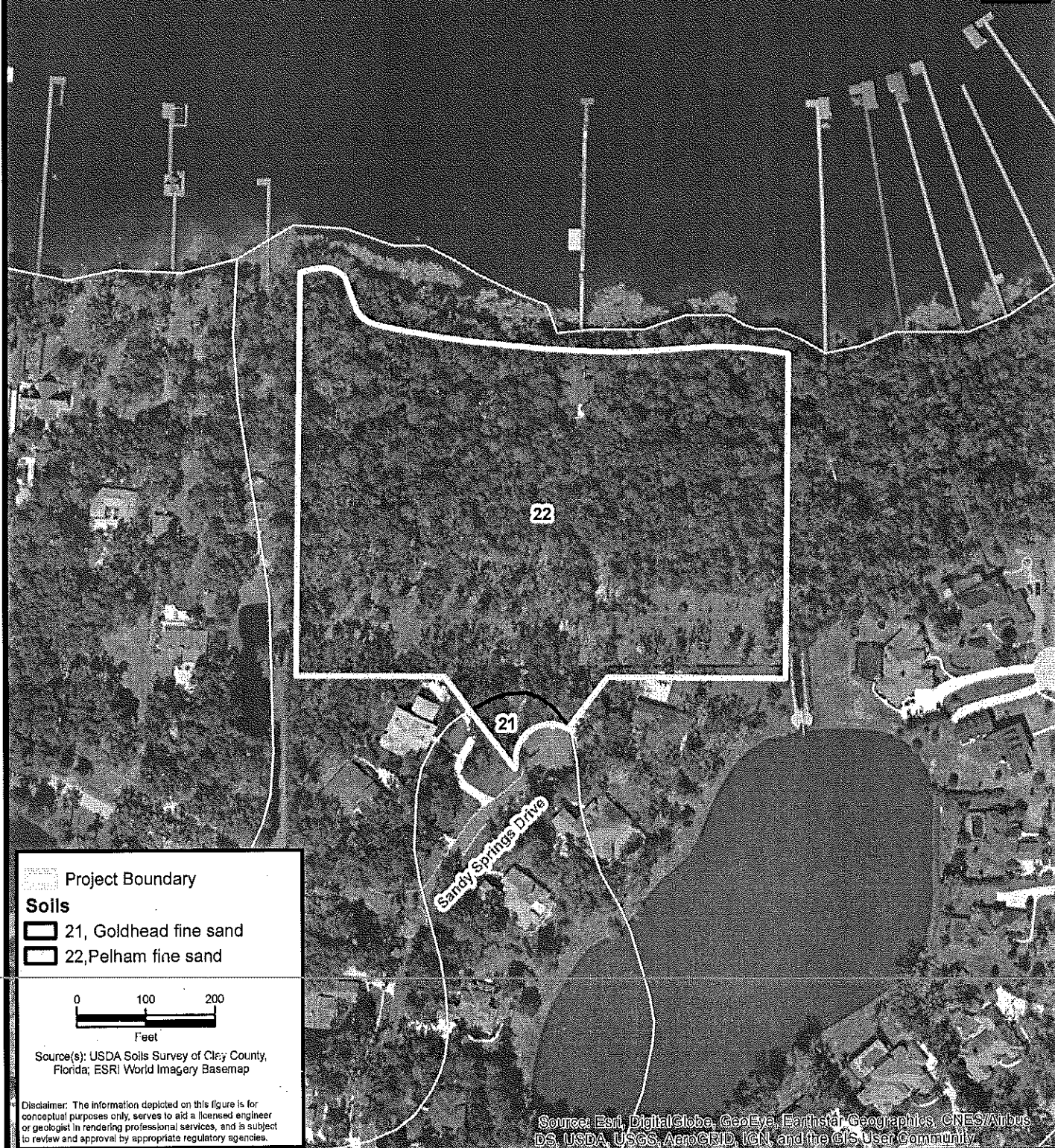
**ENVIRONMENTAL
SERVICES, INC.**

7220 Financial Way, Suite 100
Jacksonville, Florida 32256
(904) 470-2200
(904) 470-2112 Fax

www.environmentalservicesinc.com

Project Location
Preserve Estates
Clay County, Florida

| | |
|--------------|------------|
| Project: | EJ16306.01 |
| Date: | Dec 2016 |
| Drawn By: | AA |
| Checked By: | JRN |
| Approved By: | KL |
| Figure: | 1 |



Project Boundary

Soils

- 21, Goldhead fine sand
- 22, Pelham fine sand

0 100 200
Feet

Source(s): USDA Soils Survey of Clay County, Florida; ESRI World Imagery Basemap

Disclaimer: The information depicted on this figure is for conceptual purposes only, serves to aid a licensed engineer or geologist in rendering professional services, and is subject to review and approval by appropriate regulatory agencies.

Source: Esri, DigitalGlobe, GeoEye, Earthstar Geographics, CNES/Airbus DS, USDA, USGS, AeroGRID, IGN, and the GIS User Community

**ENVIRONMENTAL SERVICES, INC.**
7220 Financial Way, Suite 100
Jacksonville, Florida 32266
(904) 470-2200
(904) 470-2112 Fax
www.environmentalservicesinc.com

NRCS Soils

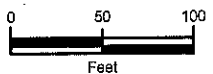
Preserve Estates

Clay County, Florida

| | |
|--------------|------------|
| Project: | EJ16306.01 |
| Date: | Dec 2016 |
| Drawn By: | AA |
| Checked By: | JRN |
| Approved By: | KL |
| Figure: | 2 |



- Project Boundary
- 111, Fixed Single Family Units (0.29 ac. ±)
- 427, Live Oak (3.48 ac. ±)
- 615, Stream and Lake Swamps (4.73 ac. ±)



Source(s): Florida Land Use, Cover and Forms Classification System, ESRI World Imagery Basemap

Disclaimer: The information depicted on this figure is for conceptual purposes only, serves to aid a licensed engineer or geologist in rendering professional services, and is subject to review and approval by appropriate regulatory agencies.

Source: Esri, DigitalGlobe, GeoEye, Earthstar Geographics, CNES/Airbus DS, USDA, USGS, AeroGRID, IGN, and the GIS User Community



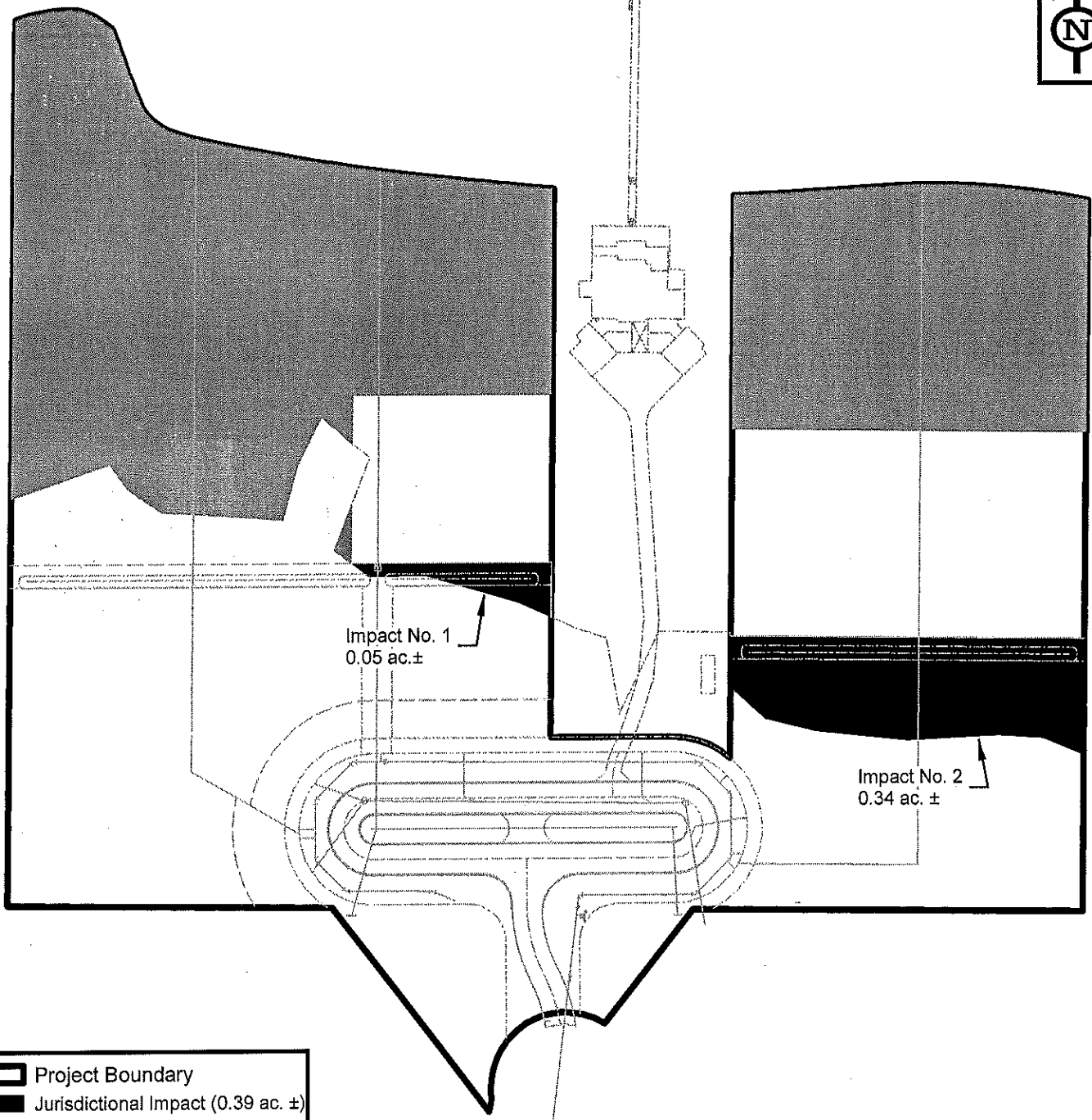
ENVIRONMENTAL SERVICES, INC.
7220 Financial Way, Suite 100
Jacksonville, Florida 32256
(904) 470-2200
(904) 470-2112 Fax
www.environmentalservicesinc.com

Existing Site Conditions

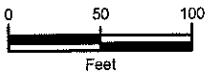
Preserve Estates

Clay County, Florida

| | |
|--------------|------------|
| Project: | EJ16306.01 |
| Date: | Dec 2016 |
| Drawn By: | AA |
| Checked By: | JRN |
| Approved By: | KL |
| Figure: | 3 |



- Project Boundary
- Jurisdictional Impact (0.39 ac. ±)
- Wetland To Remain (2.63 ac. ±)



Source(s): Florida Land Use, Cover and Forms Classification System

Disclaimer: The information depicted on this figure is for conceptual purposes only, serves to aid a licensed engineer or geologist in rendering professional services, and is subject to review and approval by appropriate regulatory agencies.



ENVIRONMENTAL SERVICES, INC.
7220 Financial Way, Suite 100
Jacksonville, Florida 32255
(904) 470-2200
(904) 470-2112 Fax
www.environmentalservicesinc.com

Proposed Site Conditions
Preserve Estates
Clay County, Florida

| | |
|--------------|------------|
| Project: | EJ16306.01 |
| Date: | Jan 2017 |
| Drawn By: | AA |
| Checked By: | JRN |
| Approved By: | KL |
| Figure: | 4 |