



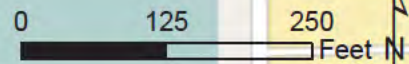
Brevard County



Service Layer Credits: © OpenStreetMap (and) contributors, CC-BY-SA



Legend
 Project Limits



K:\VRB_LDEV\Frontier\TITUSVILLE\ENR\Reports\Figure 1 - Location Map.mxd

Kimley»Horn

© 2016 Kimley-Horn and Associates, Inc.
 445 24th Street, Suite 200, Vero Beach, FL 32960
 Phone (772) 794-4100 Fax (561) 863-8175
 www.kimley-horn.com

Project Location Map

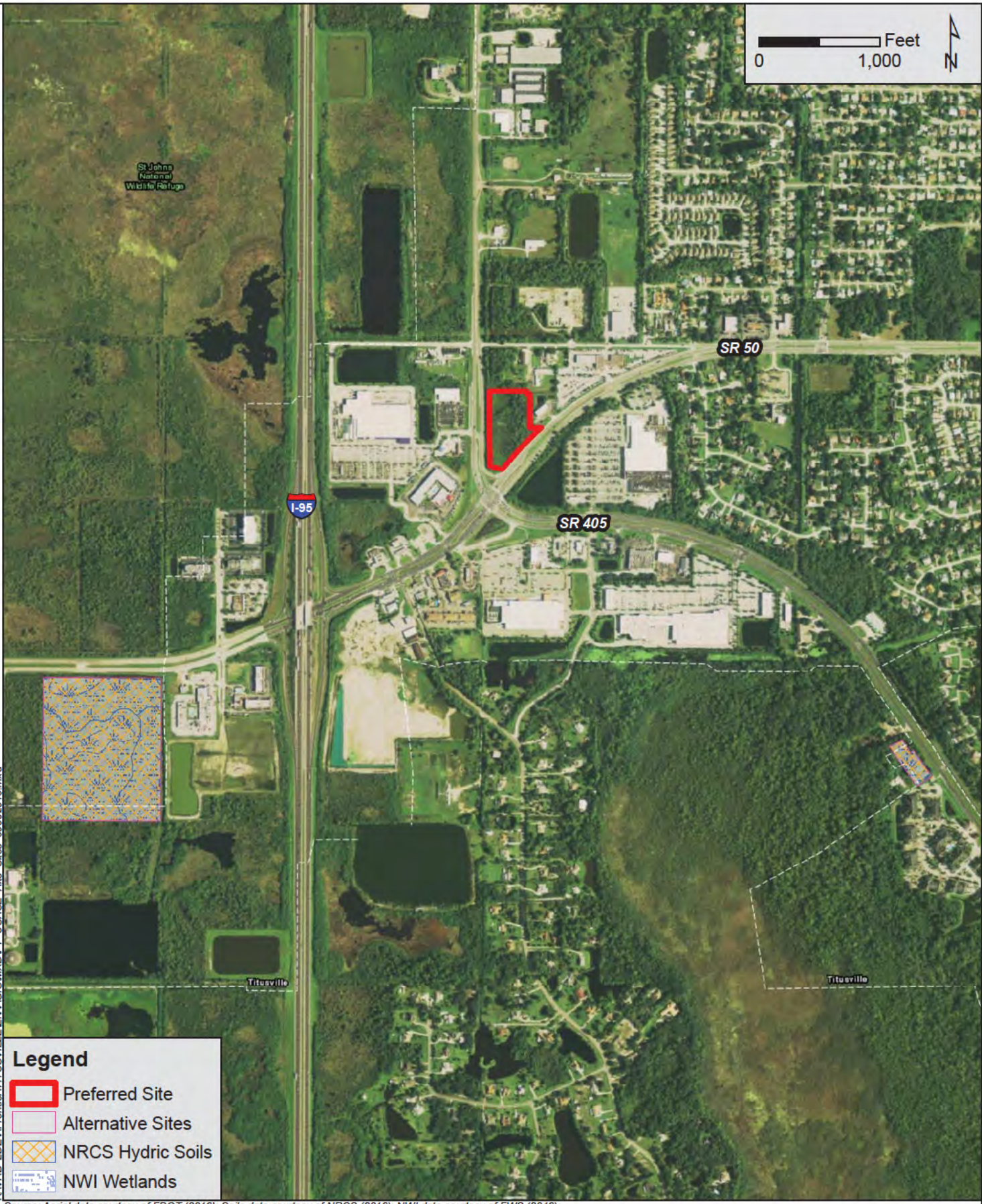
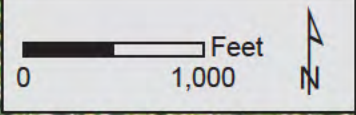
Frontier Titusville Brevard County

1 inch = 165 feet

PROJECT NUMBER: 047568009

SEPTEMBER 2016

FIGURE 1



K:\VRB_L\DEV\Frontier\TITUSVILLE\GIS\MXD\DT_USACE_AltS_Sites_08/09/2016.mxd

Legend

- Preferred Site
- Alternative Sites
- NRCS Hydric Soils
- NWI Wetlands

Source: Aerial data courtesy of FDOT (2016); Soils data courtesy of NRCS (2016); NWI data courtesy of FWS (2016);

Kimley»Horn

© 2016 Kimley-Horn and Associates, Inc.
 445 24th Street, Suite 200, Vero Beach, FL 32960
 Phone (772) 794-4100
www.kimley-horn.com

Alternative Sites Map

Frontier Titusville Brevard County, Florida

1 inch = 1,000 feet

PROJECT NUMBER: 047568009

SEPTEMBER 2016

FIGURE 3



Legend

- Project Limits

FLUCFCS Code: Description

- 630: Wetland Forested Mixed

Source: Aerial courtesy of ESRI; Habitat data courtesy of KHA

K:\VRB_LDEV\Frontier\TITUSVILLE\ENVI\GIS\MXD\FLUCFCS_Map.mxd

Kimley»Horn

© 2016 Kimley-Horn and Associates, Inc.
 445 24th Street, Suite 200, Vero Beach, FL 32960
 Phone (772) 794-4100
 www.kimley-horn.com

Florida Land Use, Cover, and Forms Classification System (FLUCFCS) Map

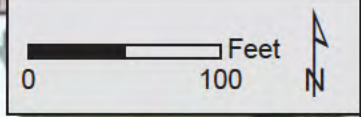
**Frontier Titusville
 Brevard County, Florida**

1 inch = 200 feet

PROJECT NUMBER: 047568009

SEPTEMBER 2016

FIGURE 5



Legend

- Project Limits
 - Proposed Site Plan
- Impact**
- Dredge (0.49 ac)
 - Fill (3.77 ac)

K:\VRB LDEV\Frontier\TITUSVILLE\GIS\MXD\DTF Permitting_08092016.mxd

Source: Aerial courtesy of FDOT (2016);

Kimley»Horn

© 2016 Kimley-Horn and Associates, Inc.
 445 24th Street, Suite 200, Vero Beach, FL 32960
 Phone (772) 794-4100
 www.kimley-horn.com

Wetland Impacts Map

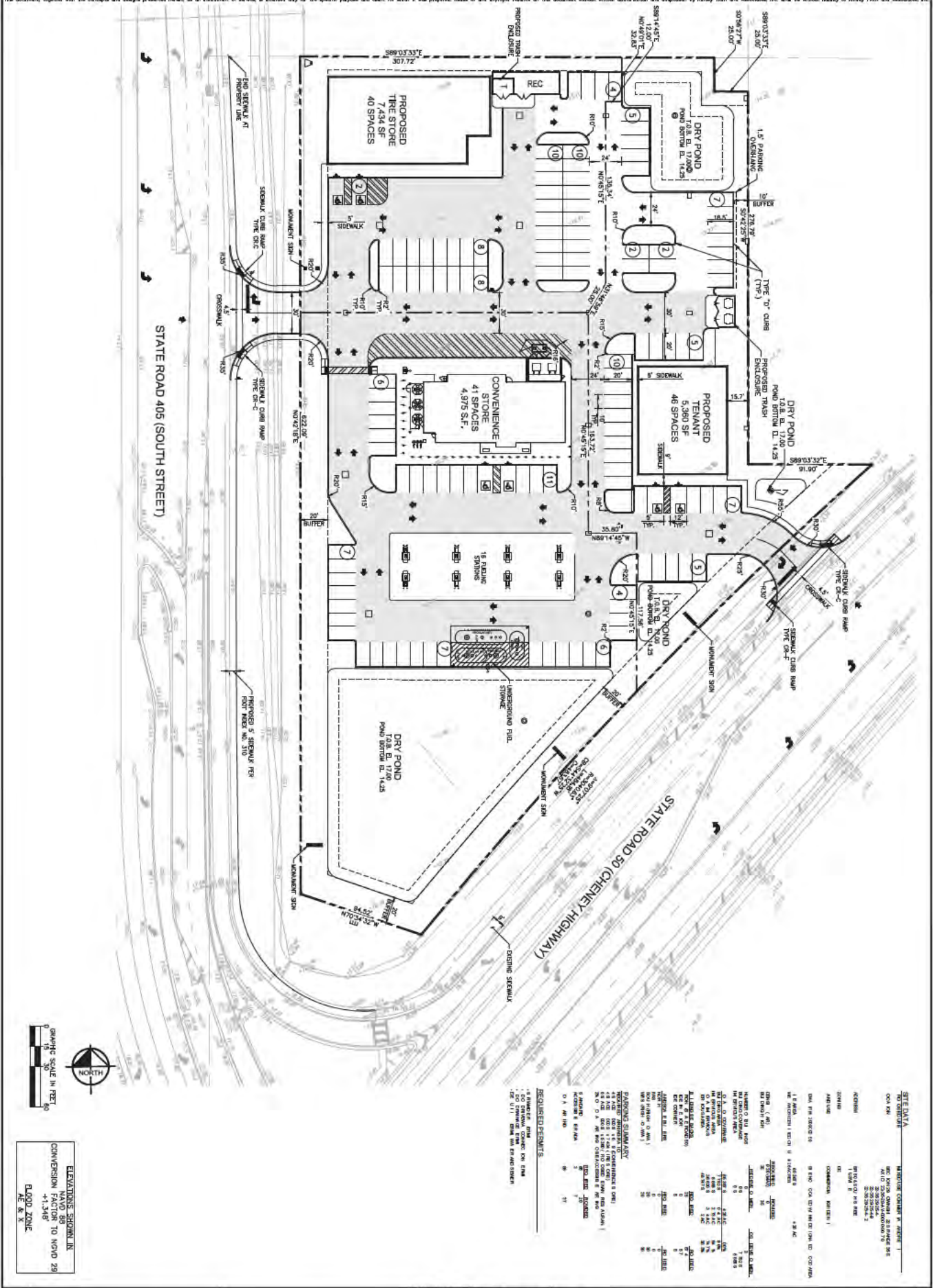
**Frontier Titusville
 Brevard County, Florida**

1 inch = 100 feet

PROJECT NUMBER: 047568009

SEPTEMBER 2016

FIGURE 6



ELEVATIONS SHOWN IN NAVD 80
CONVERSION FACTOR TO NAVD 29
+1.348'
FLOOD ZONE
A, B & X

REVISIONS

NO.	REVISIONS	DATE	BY

Kimley»Horn
© 2016 KIMLEY-HORN AND ASSOCIATES, INC.
445 24TH STREET, SUITE 200, MERO BEACH, FL 32860
PHONE: 772-764-4100
WWW.KIMLEY-HORN.COM CA 00000099

LICENSED PROFESSIONAL
DERRICK B. CAVE, P.E.
FLORIDA LICENSE NUMBER
56400
DRAWN BY: BA
CHECKED BY: DC
DATE:

KHA PROJECT
047568009
DATE
2017-01-18
SCALE AS SHOWN
DEVELOPED BY TW
DRAWN BY BA
CHECKED BY DC
DATE:

TITUSVILLE POINT
FLORIDA
MASTER PLAN
SHEET NUMBER
C-100
TITUSVILLE