

26831 HICKORY BLVD, BONITA SPRINGS, FL PERMIT DRAWINGS

PREPARED FOR:
Q. GRADY MINOR & ASSOCIATES, P.A.



LOCATION MAP
N.T.S.

FOR PERMITTING
PURPOSES ONLY.
NOT TO BE USED FOR
CONSTRUCTION.

INDEX:

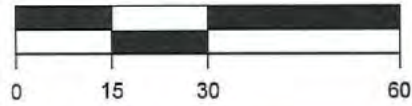
1. COVER SHEET
2. PROPOSED DOCK PLAN
3. TYPICAL SECTIONS A-A & B-B
4. TYPICAL SECTION C-C
5. WATERWAY WIDTH EXHIBIT

NOTES:

1. SURVEY COMPLETED BY COASTAL ENGINEERING CONSULTANTS, INC., ON 11/6/2015.
2. PLANE COORDINATES ARE BASED ON THE TRANSVERSE MERCATOR PROJECTION FOR THE WEST ZONE OF FLORIDA AND REFERENCED TO THE NORTH AMERICAN DATUM OF 1983 (NAD 83).
3. ELEVATIONS SHOWN HEREON ARE IN FEET AND TENTHS AND REFERENCED TO THE NORTH AMERICAN VERTICAL DATUM OF 1988 (NAVD 1988).
4. INFORMATION SHOWN HEREON REFLECTS CONDITIONS AS THEY EXISTED ON THE SURVEY DATE SHOWN AND CAN ONLY BE CONSIDERED INDICATIVE OF CONDITIONS AT THAT TIME.
5. AERIAL PHOTOGRAPHY OBTAINED FROM LEE COUNTY, DATED 2016.



<p>COASTAL ENGINEERING CONSULTANTS INC. A CECI GROUP COMPANY Serving Florida Since 1977 3106 SOUTH HORSESHOE DRIVE NAPLES, FLORIDA 34104</p>	<p>CIVIL ENGINEERING SURVEY & MAPPING COASTAL ENGINEERING ENVIRONMENTAL PLANNING SERVICES PHONE: (239)643-2324 FAX: (239)643-1143 www.coastalengineering.com E-Mail: info@cecifi.com</p>	CLIENT:	Q. GRADY MINOR		DATE:	6/2/2016	SCALE:	AS NOTED						
		TITLE:	COVER SHEET		DRAWN:	SDB	F.B.							
				CHECKED:	MTP	PG.								
				SEC.	TWP.	RNG.								
				ACAD NO.	15242-P.dwg			2	1/31/17	MTP	REVISED MHW ELEVATION			
		REF. NO.	15,242			1	1/23/17	MTP	RAJ #1					
									NO.	DATE	BY	REVISION DESCRIPTION		



EXISTING WETLAND AREA = 0.30 AC
 PROPOSED FILL AREA = 0.11 AC

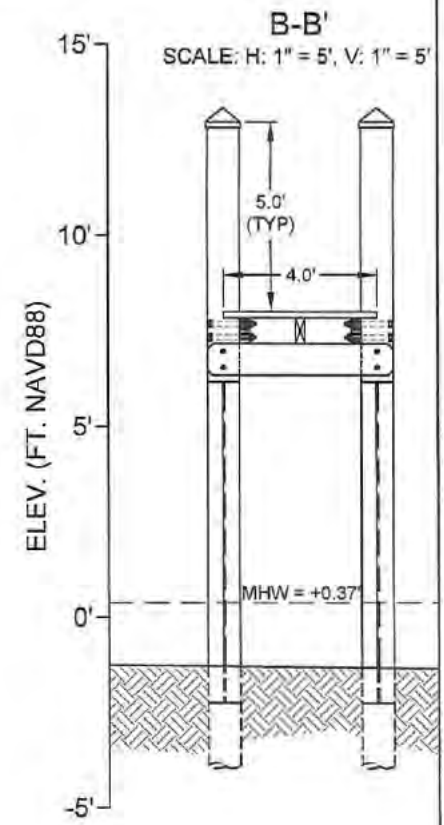
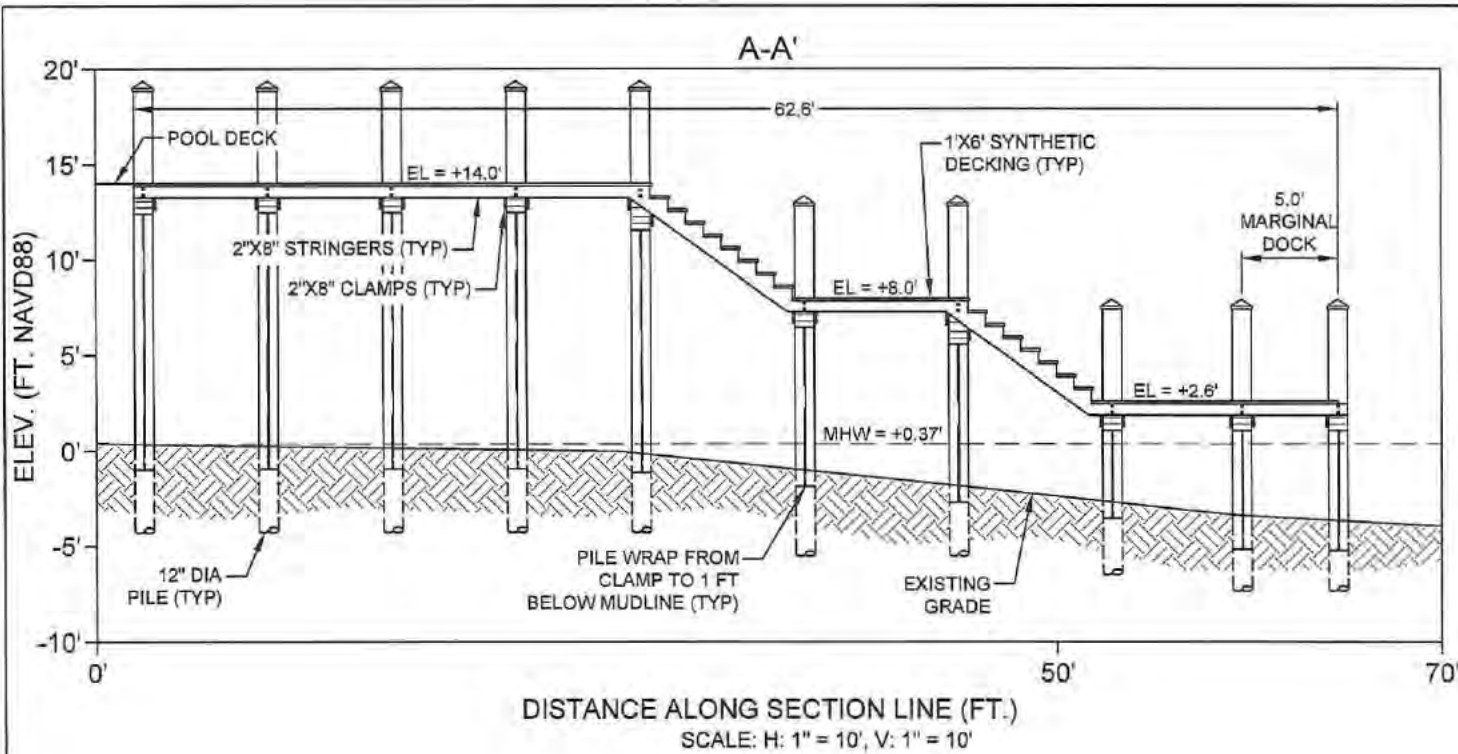


COASTAL ENGINEERING CONSULTANTS INC.
 A DECI GROUP COMPANY
 Serving Florida Since 1977
 3105 SOUTH HORSESHOE DRIVE
 NAPLES, FLORIDA 34104

CIVIL ENGINEERING
 SURVEY & MAPPING
 COASTAL ENGINEERING
 ENVIRONMENTAL
 PLANNING SERVICES
 PHONE: (239)643-2824
 FAX: (239)643-1143
 www.coastalengineering.com
 E-Mail: info@cecif.com

CLIENT: **Q. GRADY MINOR**
 TITLE: **PROPOSED DOCK PLAN**

DATE:	8/2/2016	SCALE:	AS NOTED
DRAWN:	SDB	F.B.	
CHECKED:	MTP	PG.	
SEC.	TWP.	RNG.	
ACAD NO.	15242-P.dwg		
REF. NO.	15242		
NO.	DATE	BY	REVISION DESCRIPTION
2	1/31/17	MTP	REVISED M-HW ELEVATION
1	1/23/17	MTP	RAI #1



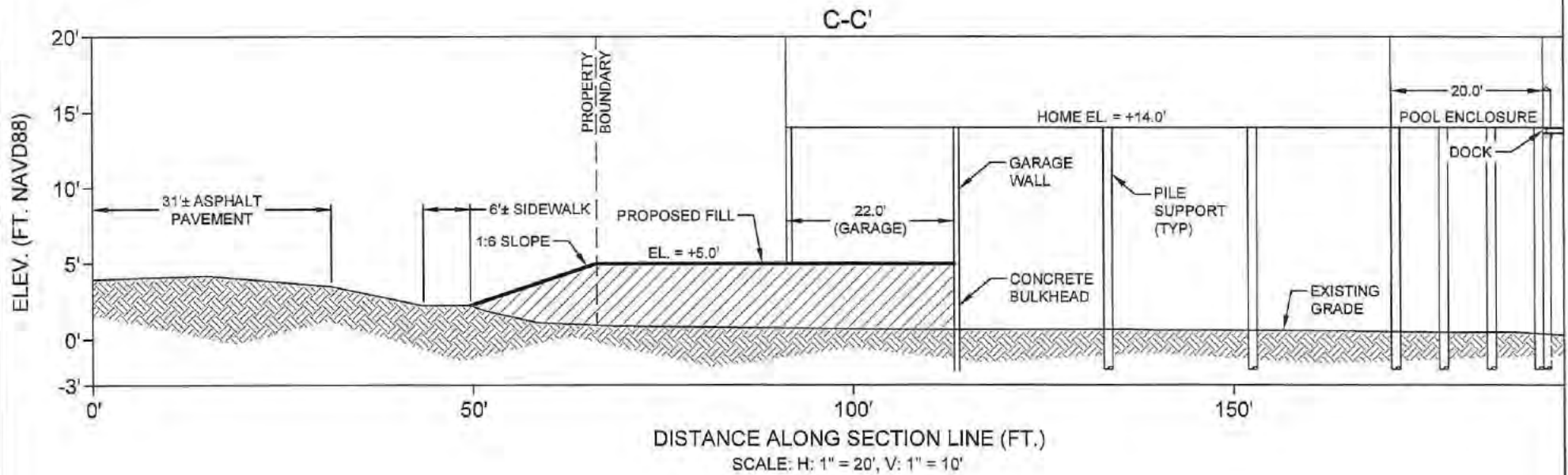
COASTAL ENGINEERING CONSULTANTS INC.
 A CECI GROUP COMPANY
 Serving Florida Since 1977
 3106 SOUTH HORSESHOE DRIVE
 NAPLES, FLORIDA 34104

CIVIL ENGINEERING
 SURVEY & MAPPING
 COASTAL ENGINEERING
 ENVIRONMENTAL
 PLANNING SERVICES
 PHONE: (239)643-2324
 FAX: (239)643-1143
 www.coastalengineering.com
 E-Mail: info@cecfi.com

CLIENT: **Q. GRADY MINOR**
 TITLE: **TYPICAL SECTIONS A-A' & B-B'**

DATE: 6/2/2018 SCALE: AS NOTED
 DRAWN: SDB F.B.
 CHECKED: MTP PG.
 SEC. TWP. RING.
 ACAD NO: 15242-P.dwg
 REF NO: 15242

NO.	DATE	BY	REVISION DESCRIPTION
2	1/31/17	MTP	REVISED MHW ELEVATION
1	1/23/17	MTP	RAI #1



FILE NO. 15242-P-1

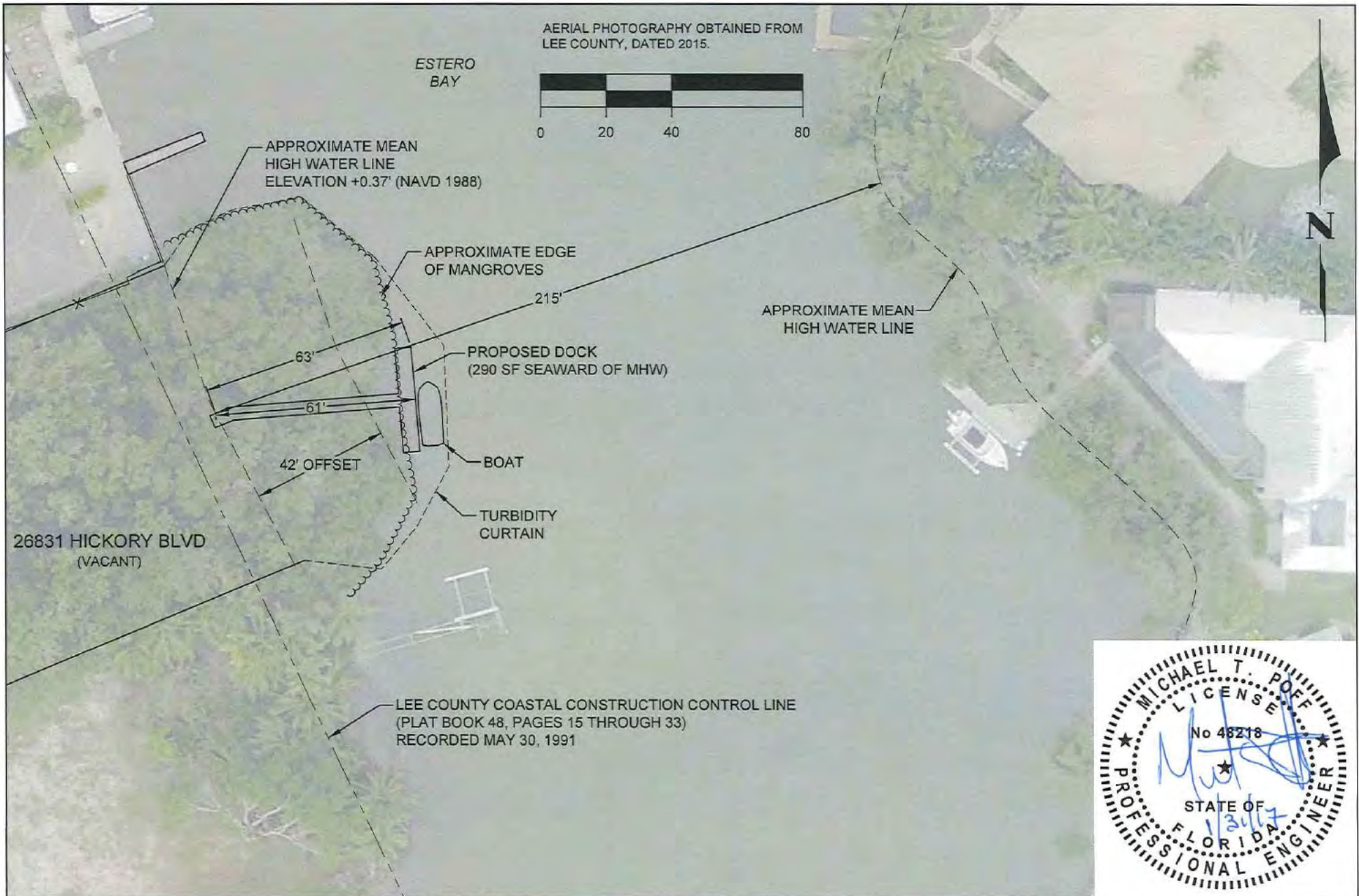


COASTAL ENGINEERING CONSULTANTS INC.
A CECI GROUP COMPANY
Serving Florida Since 1977
3106 SOUTH HORSESHOE DRIVE
NAPLES, FLORIDA 34104

CIVIL ENGINEERING
SURVEY & MAPPING
COASTAL ENGINEERING
ENVIRONMENTAL
PLANNING SERVICES
PHONE: (239)543-2324
FAX: (239)543-1143
www.coastalengineering.com
E-Mail: info@cecill.com

CLIENT:	Q. GRADY MINOR
TITLE:	TYPICAL SECTION C-C'

DATE:	8/2/2018	SCALE:	AS NOTED
DRAWN:	SDB	F.B.	
CHECKED:	MTP	P.G.	
SEC.	TWP.	RNG.	
ACAD NO.	15242-P.dwg		
REF. NO.	15242		
NO.	DATE	BY	REVISION DESCRIPTION
2	1/31/17	MTP	REVISED M-HW ELEVATION
1	1/23/17	MTP	RAI #1



AERIAL PHOTOGRAPHY OBTAINED FROM LEE COUNTY, DATED 2015.

ESTERO BAY



26831 HICKORY BLVD
(VACANT)

LEE COUNTY COASTAL CONSTRUCTION CONTROL LINE
(PLAT BOOK 48, PAGES 15 THROUGH 33)
RECORDED MAY 30, 1991



SHEETS
FILE NO.: 15242-P-5

COASTAL ENGINEERING CONSULTANTS INC.
A CECI GROUP COMPANY
Serving Florida Since 1977
3106 SOUTH HORSESHOE DRIVE
NAPLES, FLORIDA 34104

CIVIL ENGINEERING
SURVEY & MAPPING
COASTAL ENGINEERING
ENVIRONMENTAL
PLANNING SERVICES

PHONE: (239)643-2324
FAX: (239)643-1143
www.coastalengineering.com
E-Mail: info@cecif.com

CLIENT: **Q. GRADY MINOR**

TITLE: **WATERWAY WIDTH EXHIBIT**

DATE:	6/2/2016	SCALE:	AS NOTED
DRAWN:	SDB	F.B.	
CHECKED:	MTP	PG.	
SEC.	TWP.	RNG.	
ACAD NO.	15242-P.dwg		
REF. NO.	15242		
		NO.	DATE BY REVISION DESCRIPTION
		2	1/31/17 MTP REVISED MHW ELEVATION
		1	1/23/17 MTP RAI #1