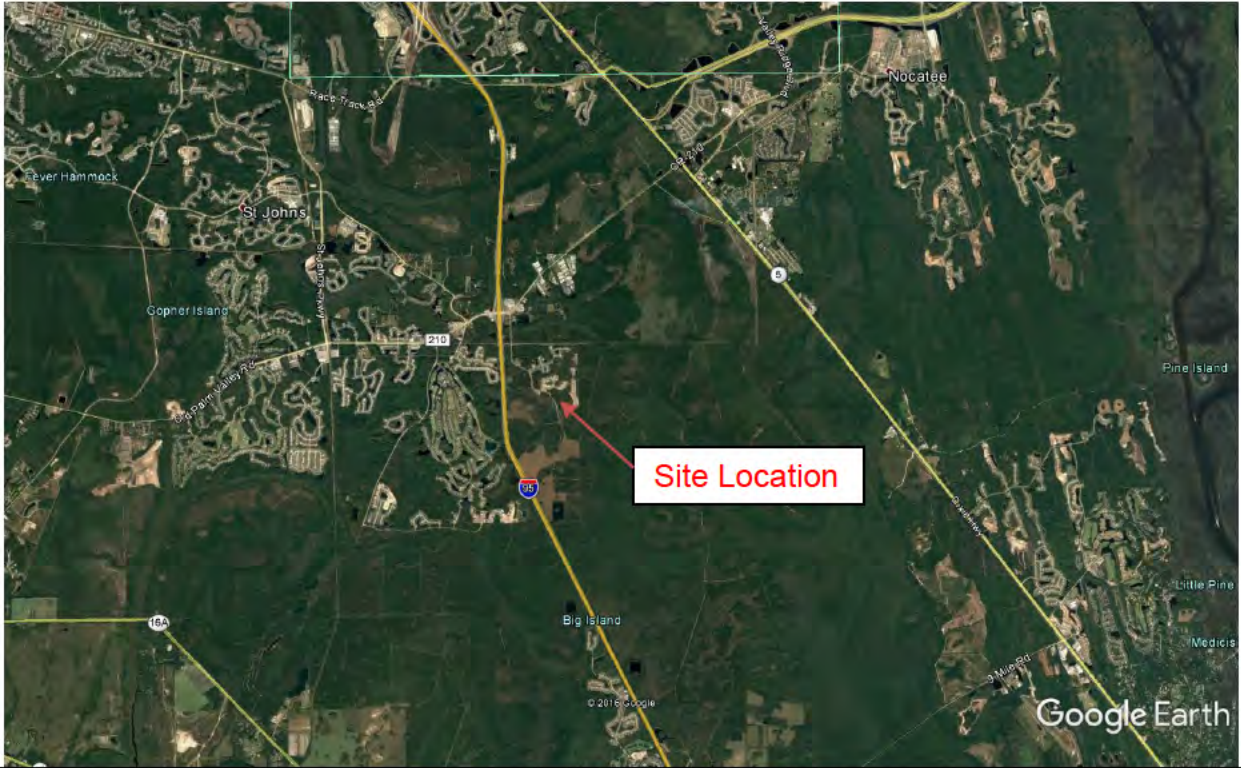
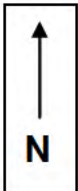
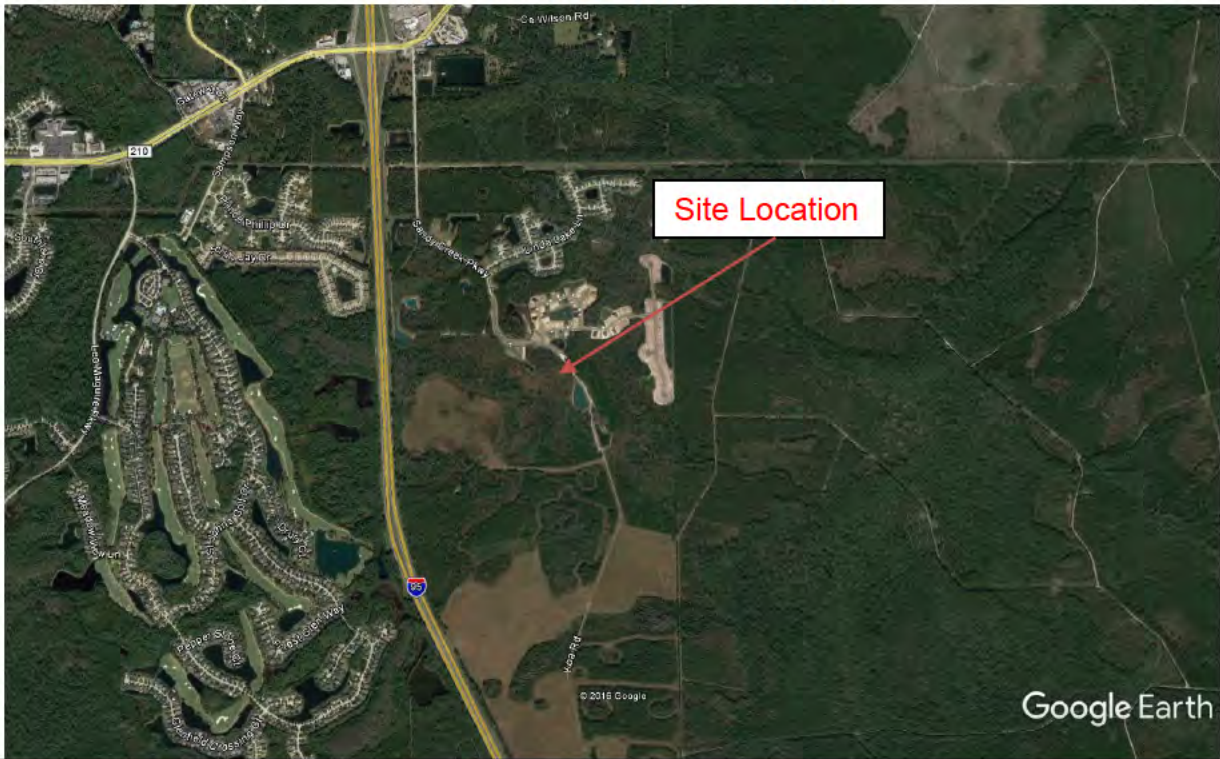


# AREA VICINITY MAP



# LOCAL VICINITY MAP

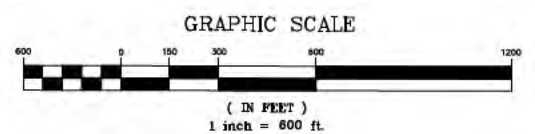
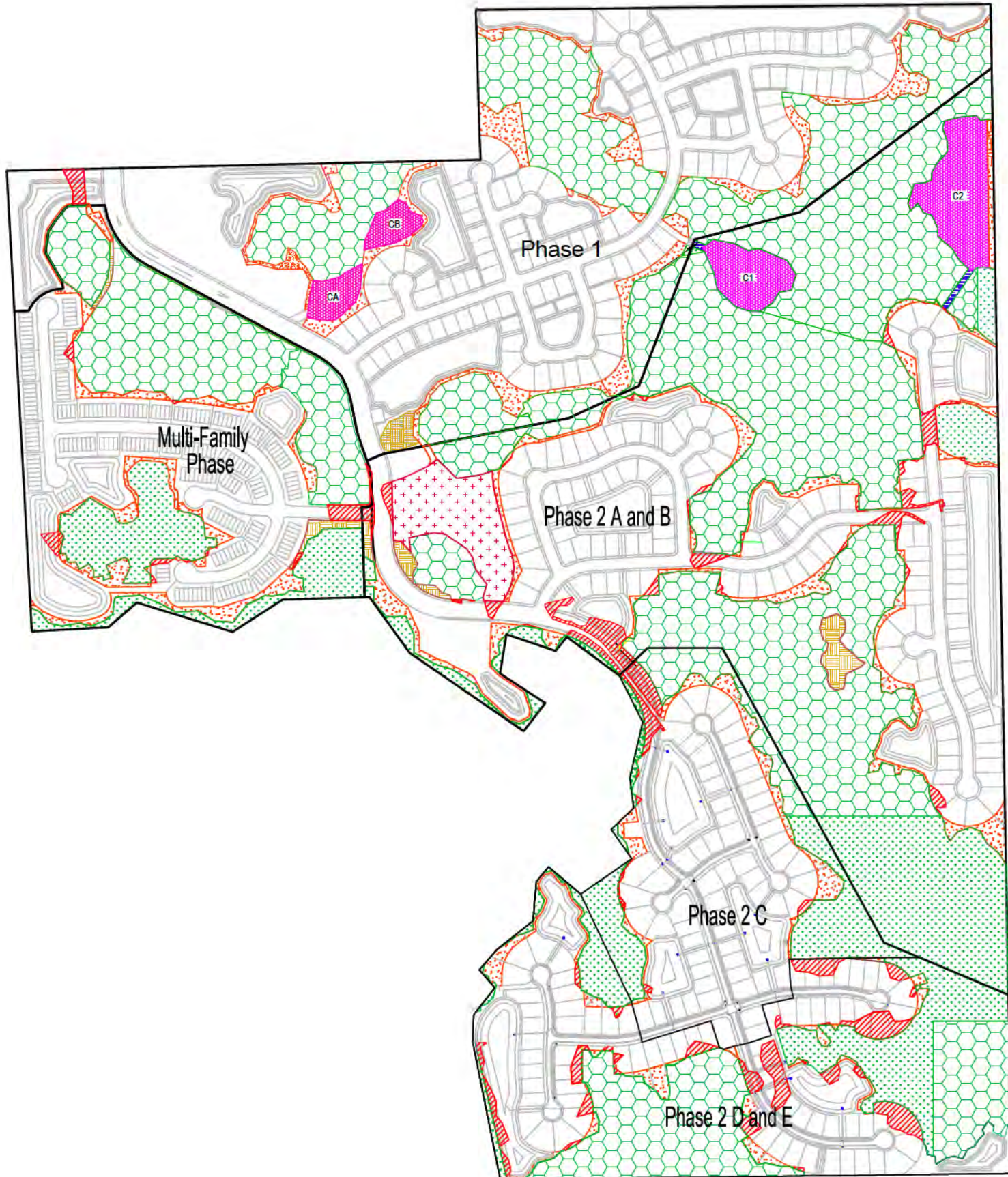


**FIGURE 1**  
**Site Location Map**  
Sandy Creek Subdivision  
St. Johns County, Florida  
AEA Project No. 05-1210-01  
Source: Google Earth

**Access Ecological  
Associates, Inc.**

2720 Park Street  
Suite 201  
Jacksonville, Florida  
32205





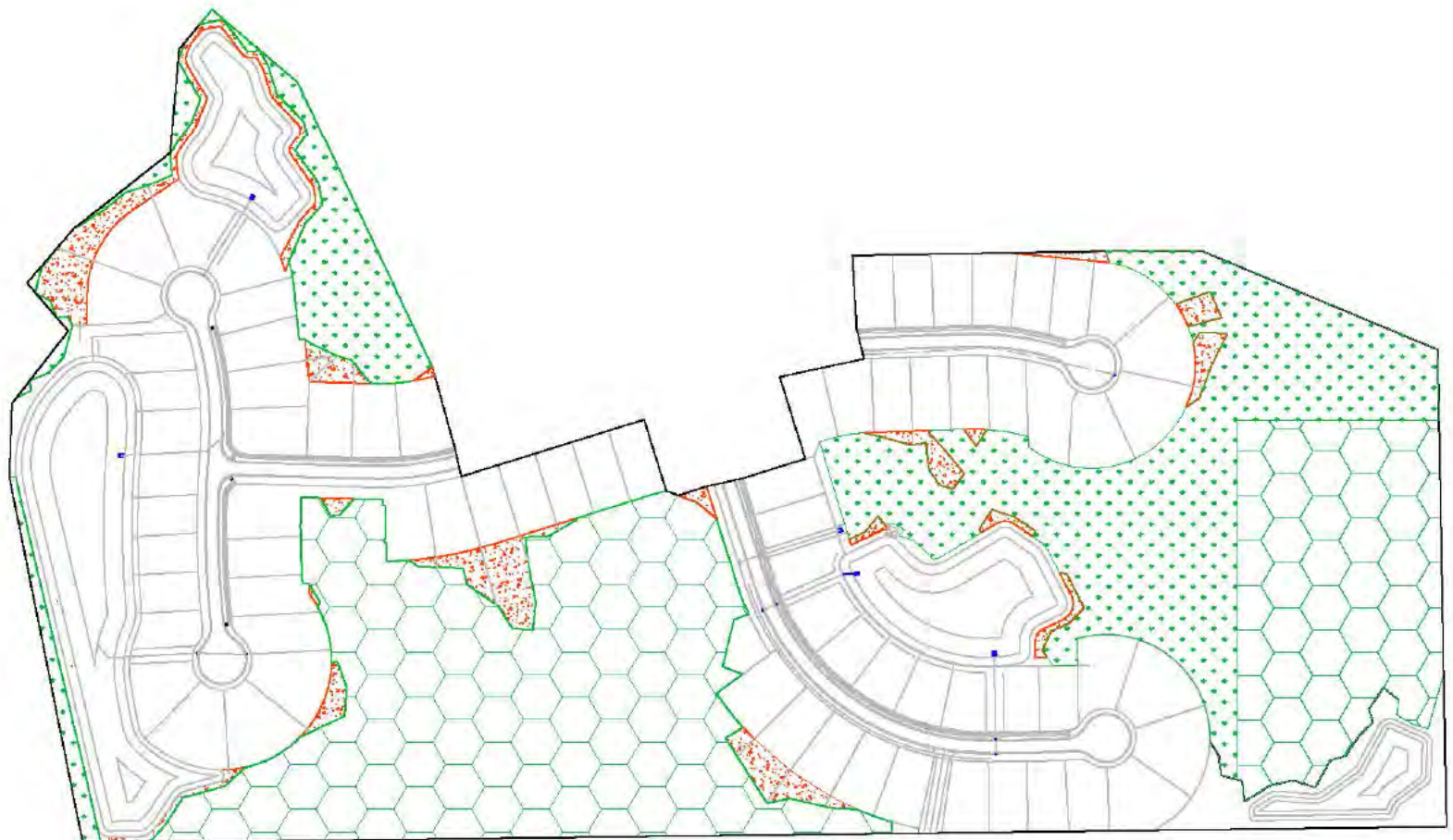
\*Note: This is not survey. Acreages based on provided permit drawings and survey data



ACCESS ECOLOGICAL  
ASSOCIATES, INC.  
2720 PARK STREET, STE. 201  
JACKSONVILLE, FL 32205  
Phone: 904-584-1144  
Fax: 904-584-1143

Sandy Creek Subdivision – Corps Overview	
DATE: 11.16.16	SCALE: 1" = 600'
FIGURE 2	AEA 05-1210-01
DRAWN BY: STAFF	CHECKED BY: JAS

# Sandy Creek Subdivision Phase 2 D and E



Phase 2 D and E - 49.71 Acres

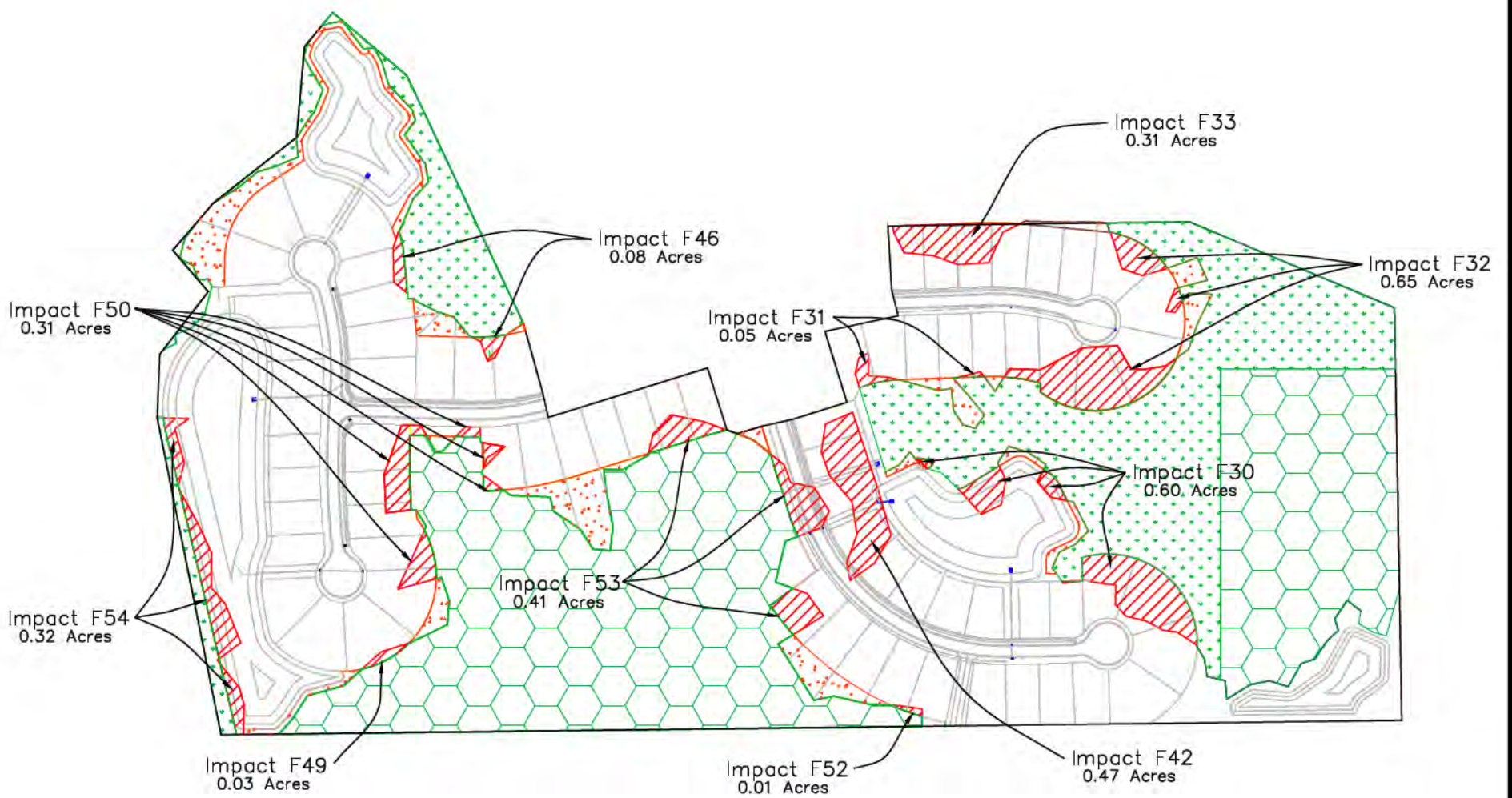
*\*Note: This is not survey. Acreages based on provided permit drawings and survey data*



ACCESS ECOLOGICAL  
ASSOCIATES, INC.  
2720 PARK STREET, STE. 201  
JACKSONVILLE, FL 32205  
Phone: 904-584-1144  
Fax: 904-584-1143

Phase 2 DE - Corps Modified Site Plan	
DATE: 11.22.16	SCALE: 1" = 300'
FIGURE 3	AEA 05-1210-01
DRAWN BY: STAFF	CHECKED BY: JAS

# Sandy Creek Subdivision Phase 2 D and E



Phase 2 D and E - 49.71 Acres	
Wetland Impacts	3.24 ac.±

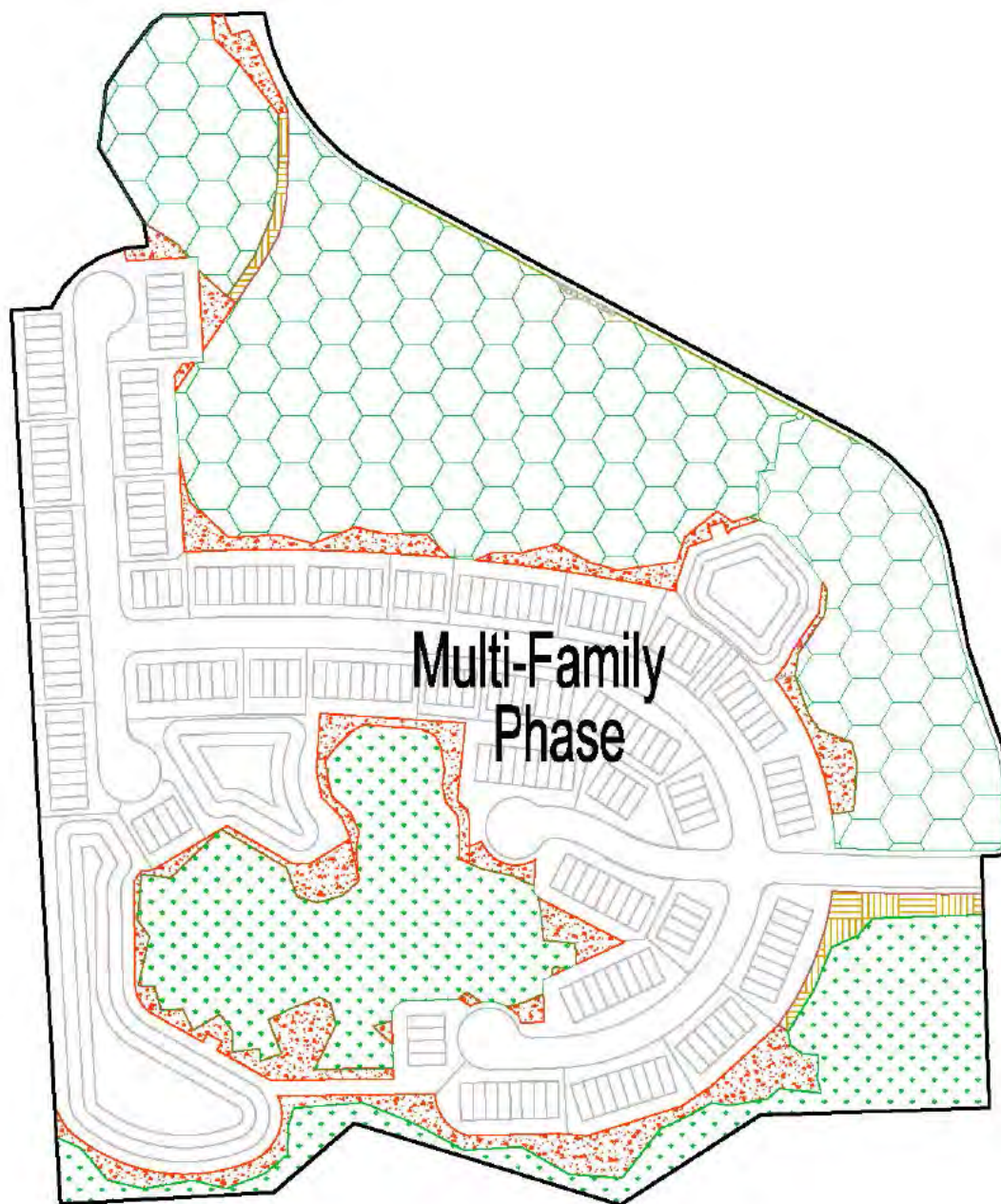
*\*Note: This is not survey. Acreages based on provided permit drawings and survey data*



ACCESS ECOLOGICAL  
ASSOCIATES, INC.  
2720 PARK STREET, STE. 201  
JACKSONVILLE, FL 32205  
Phone: 904-584-1144  
Fax: 904-584-1143

Phase 2 DE - Corps Impact Areas	
DATE: 11.22.16	SCALE: 1" = 300'
FIGURE 4	AEA 05-1210-01
DRAWN BY: STAFF	CHECKED BY: JAS

# Sandy Creek Subdivision Multi-Family Phase



Multi-Family Phase - 50.77 Acres

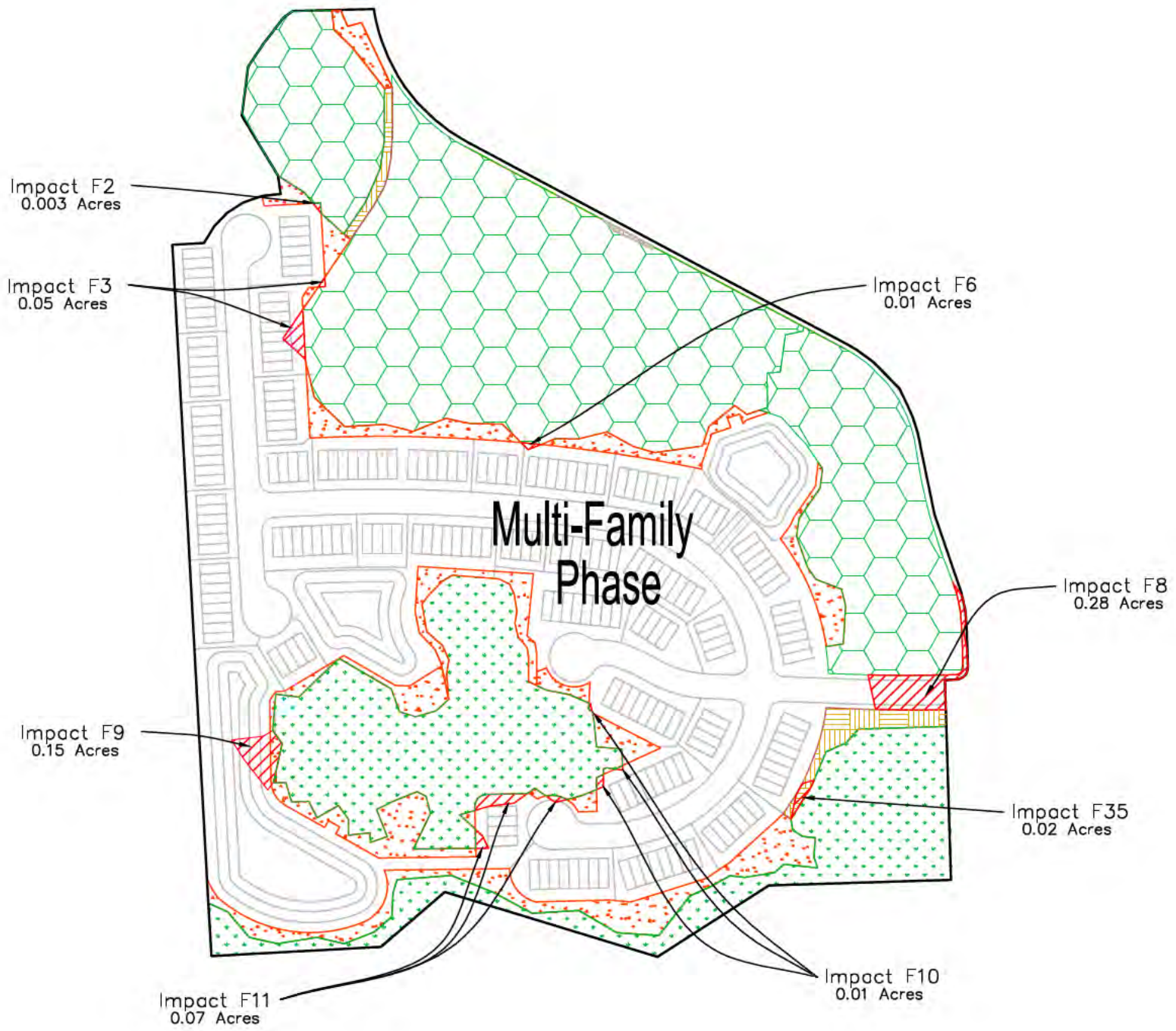
*\*Note: This is not survey. Acreages based on provided permit drawings and survey data*



ACCESS ECOLOGICAL  
ASSOCIATES, INC.  
2720 PARK STREET, STE. 201  
JACKSONVILLE, FL 32205  
Phone: 904-584-1144  
Fax: 904-584-1143

<i>Multi-Family – Corps Modified Site Plan</i>	
<i>DATE: 11.22.16</i>	<i>SCALE: 1" = 300'</i>
<i>FIGURE 5</i>	<i>AEA 05-1210-01</i>
<i>DRAWN BY: STAFF</i>	<i>CHECKED BY: JAS</i>

# Sandy Creek Subdivision Multi-Family Phase



Multi-Family Phase - 50.77 Acres	
Wetland Impacts	0.68 ac.±

*\*Note: This is not survey. Acreages based on provided permit drawings and survey data*



ACCESS ECOLOGICAL  
ASSOCIATES, INC.  
2720 PARK STREET, STE. 201  
JACKSONVILLE, FL 32205  
Phone: 904-584-1144  
Fax: 904-584-1143

Multi-Family - Corps Impact Areas	
DATE: 11.22.16	SCALE: 1" = 300'
FIGURE 6	AEA 05-1210-01
DRAWN BY: STAFF	CHECKED BY: JAS