

M:\Projects\2014-0007-001 Everglades Preparatory Academy K-5 figures and drawings\GIS\Figure 1 - Location Map NL.mxd



SMART-SCIENCES

Environmental Consulting
 330 SW 27th Avenue, Suite 504, Miami, FL 33135
 P: 786.313.3977 F: 305.356.4333

Everglades Preparatory Academy K-5

2251 East Mowry Drive
 Section 17, Township 57S Range 39E
 Homestead, Miami-Dade County, Florida

Location Map

FIGURE

1

CHECKED BY: GB

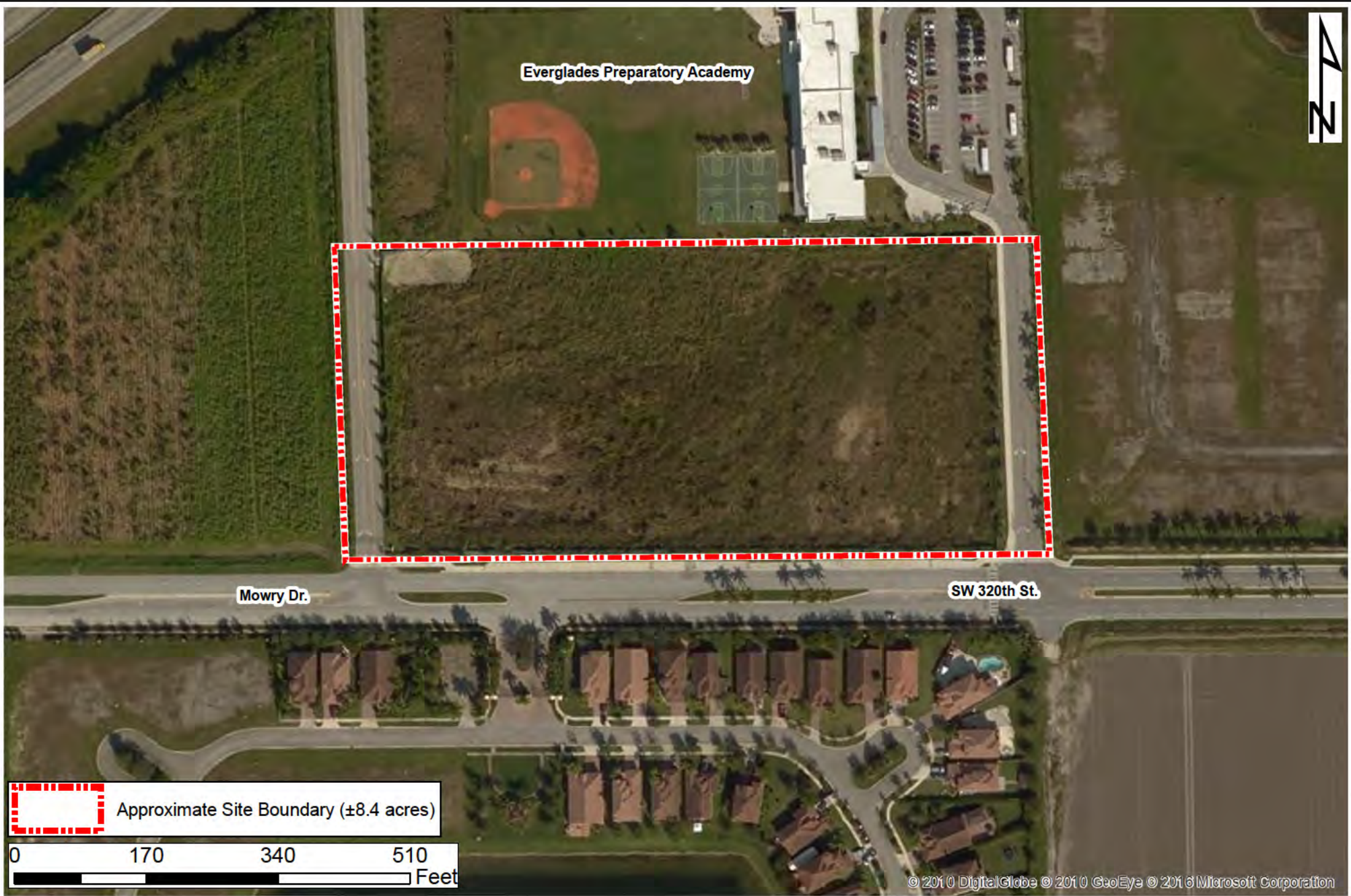
DRAWN BY: NL

PROJECT NUMBER
 2014-0007-001

SCALE: As Shown

DATE: 10/28/2016

M:\Projects\2014_0007-001 Everglades Charter School\4 figures and drawings\GIS\Figure 2 - Aerial_103116.mxd

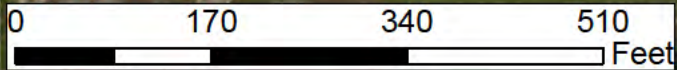


Everglades Preparatory Academy

Mowry Dr.

SW 320th St.

Approximate Site Boundary (±8.4 acres)



© 2010 DigitalGlobe © 2010 GeoEye © 2010 Microsoft Corporation



SMART-SCIENCES
Environmental Consulting

330 SW 27th Avenue, Suite 504, Miami, FL 33135
P: 786.313.3977 F: 305.356.4333

Everglades Preparatory Academy K-5

2251 East Mowry Drive
Section 17, Township 57S, Range 39E
Homestead, Miami-Dade County, Florida

2015 Aerial Map

SCALE: As Shown

DATE: 10/31/2016

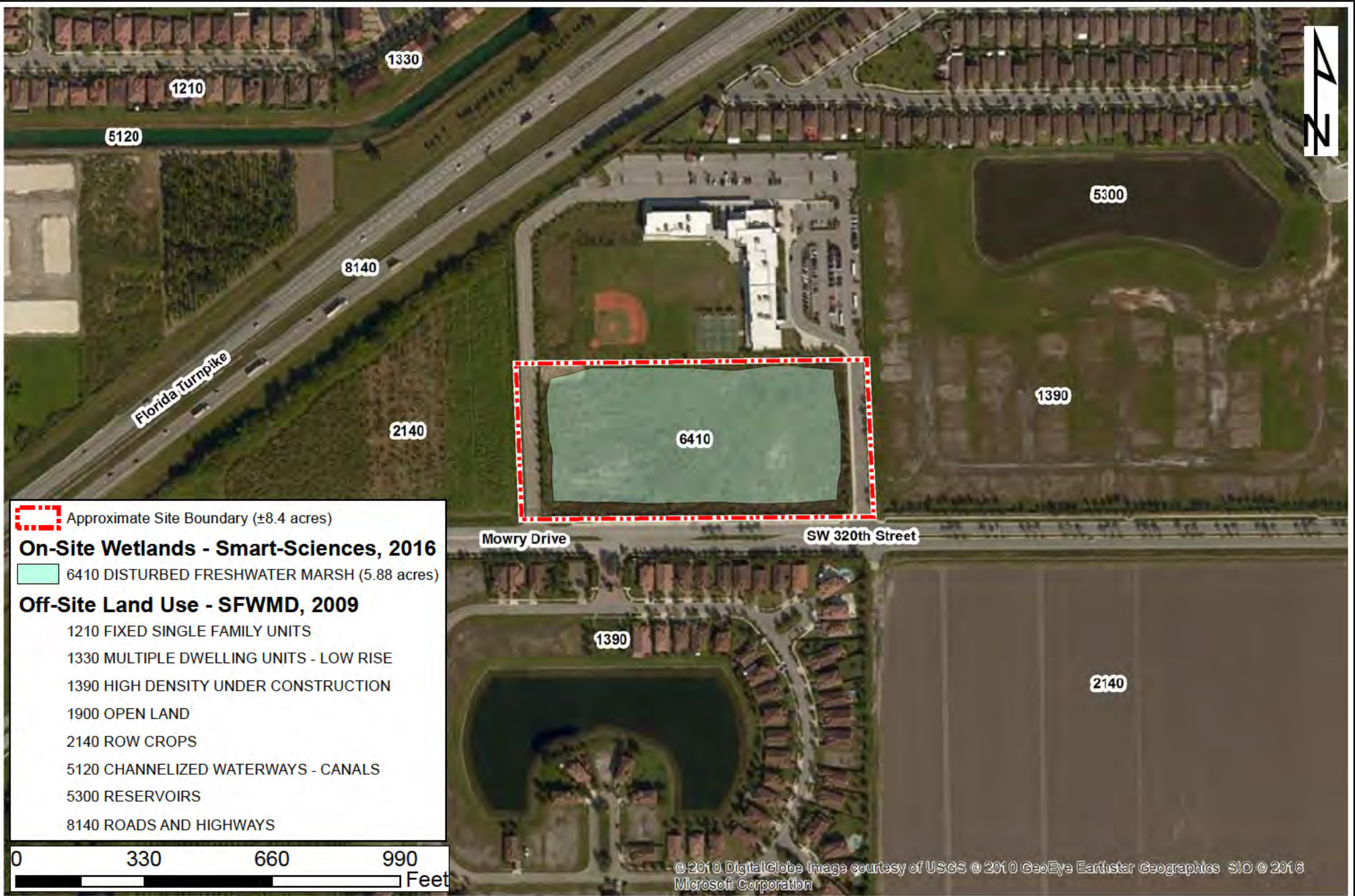
FIGURE


2

CHECKED BY: GB


DRAWN BY: NL

PROJECT NUMBER
2014-0007-001



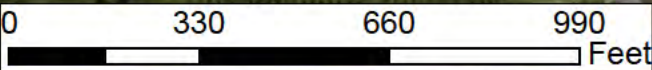
 Approximate Site Boundary (±8.4 acres)

On-Site Wetlands - Smart-Sciences, 2016

 6410 DISTURBED FRESHWATER MARSH (5.88 acres)

Off-Site Land Use - SFWMD, 2009

- 1210 FIXED SINGLE FAMILY UNITS
- 1330 MULTIPLE DWELLING UNITS - LOW RISE
- 1390 HIGH DENSITY UNDER CONSTRUCTION
- 1900 OPEN LAND
- 2140 ROW CROPS
- 5120 CHANNELIZED WATERWAYS - CANALS
- 5300 RESERVOIRS
- 8140 ROADS AND HIGHWAYS



SMART-SCIENCES
Environmental Consulting

330 SW 27th Avenue, Suite 504, Miami, FL 33135
P: 786.313.3977 F: 305.356.4333

CHECKED BY: GB

DRAWN BY: NL

PROJECT NUMBER
2014-0007-001

Everglades Preparatory Academy K-5

2251 East Mowry Drive
Section 17, Township 57S, Range 39E
Homestead, Miami-Dade County, Florida

Land Use Map

SCALE: As Shown

DATE: 10/31/2016

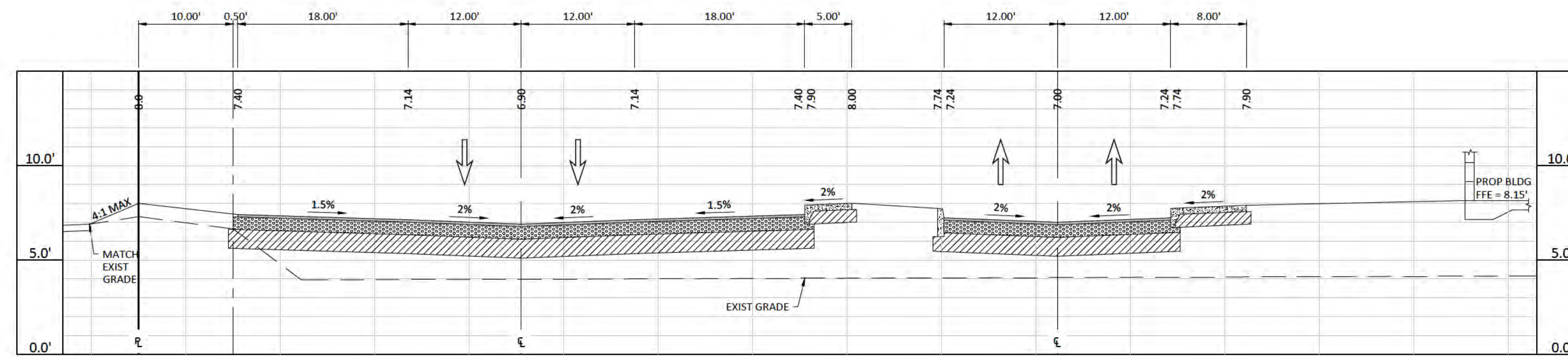
FIGURE

4

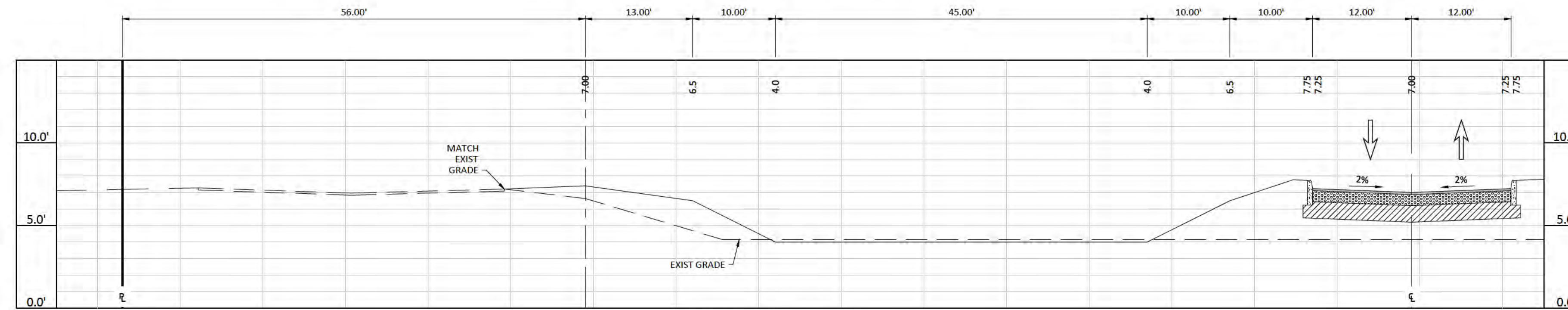
M:\Projects\2014-0007-001 Everglades Charter School\4. figures and drawings\GIS\Figure 4 - Land Use_103116.mxd

- (A) 1.5" TYPE S-3 ASPHALTIC CONCRETE, 2 EQUAL LIFTS (D) TYPE "D" CURB
- (B) 8" LIMEROCK BASE (MIN. LBR 100) (E) THICKENED EDGE SIDEWALK
- (C) 12" STABILIZED SUBGRADE (MIN. LBR 40)

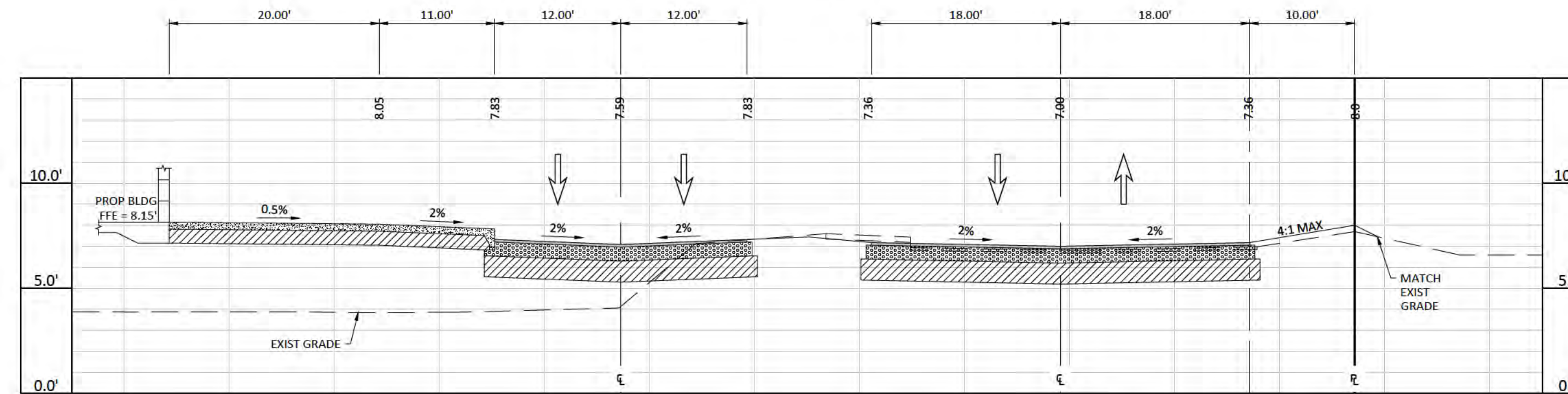
SCALE: 1" = 10' HORIZONTAL
1" = 5' VERTICAL



SECTION 1-1



SECTION 2-2



SECTION 3-3

No.	DATE	REVISION	BY	No.	DATE	REVISION	BY

DESIGNED: NR
DATE: 11/10/16
DRAWN: NR
DATE: 11/10/16
CHECKED: SH
DATE: 11/10/16



THOMPSON & ASSOCIATES
CERTIFICATE OF AUTHORIZATION 28185
PO BOX 22398, FORT LAUDERDALE, FLORIDA 33335
MIAMI-DADE (786) 897.5919
BROWARD (954) 761.1073
PALM BEACH (561) 932.1668

EVERGLADES PREP PHASE II
HOMESTEAD, FLORIDA

CIVIL SECTIONS

DESIGNED BY:
DATE: 11/10/16

SCALE: AS NOTED
PROJECT No.: 16028
CAD FILE:

SHEET: **C-1**
01 OF 01