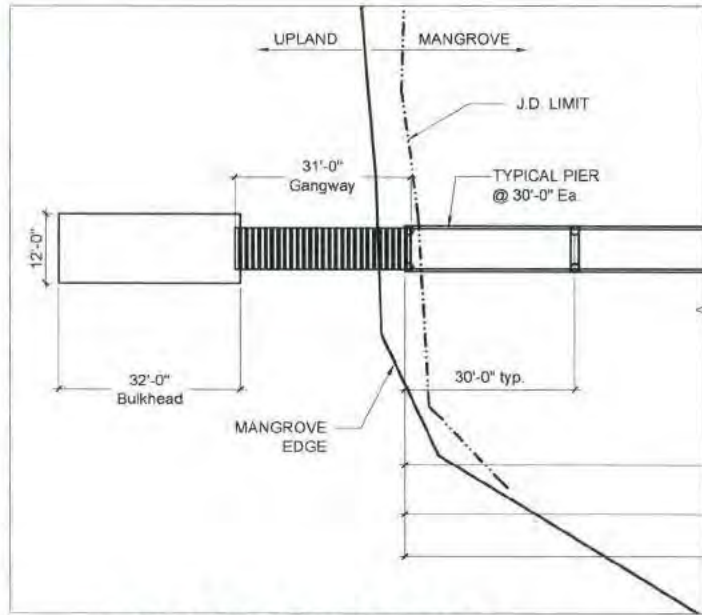




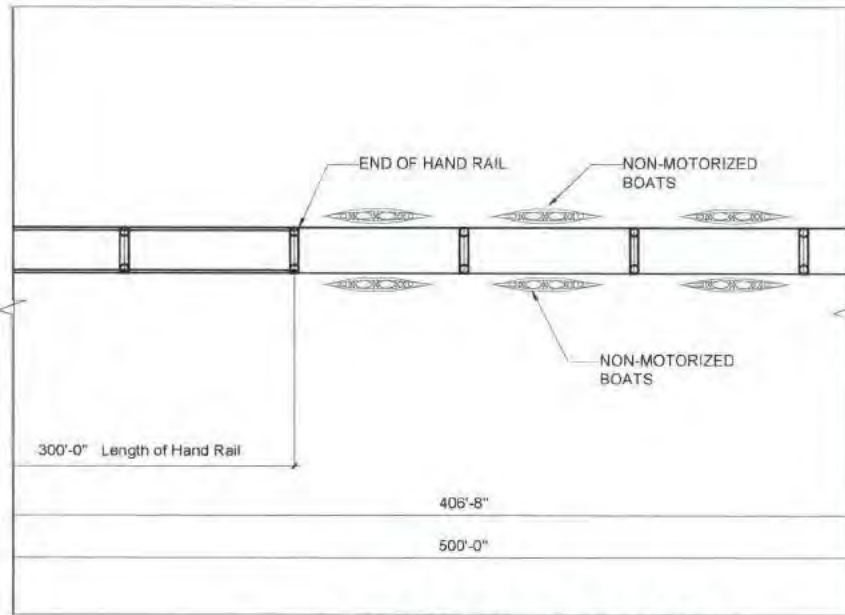
Polis Group

POLIS GROUP, LLC.
architecture, planning & development corporation
1500 WALKER BLVD., SUITE 1000
MIAMI BEACH, FLORIDA 33139
TEL (305) 781-8200
FAX (305) 781-8200



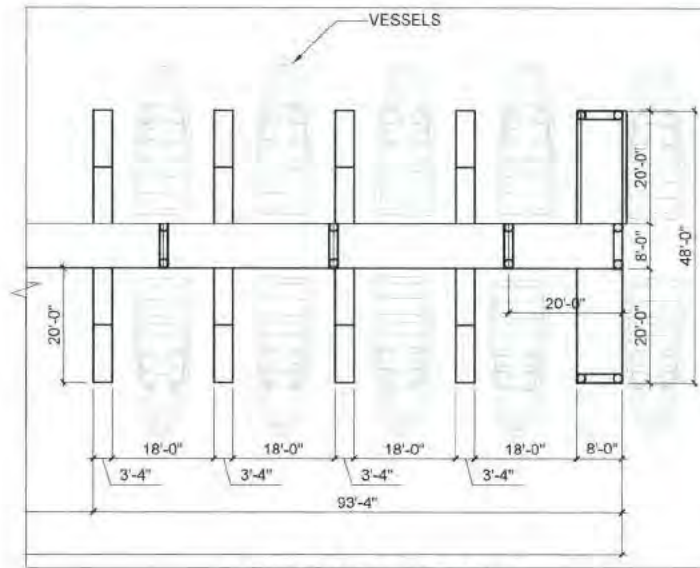
UPLAND SEGMENT

SCALE: 1/32"=1'-0"



CENTER SEGMENT

SCALE: 1/32"=1'-0"



END SEGMENT

SCALE: 1/32"=1'-0"

MARINA COCO BEACH

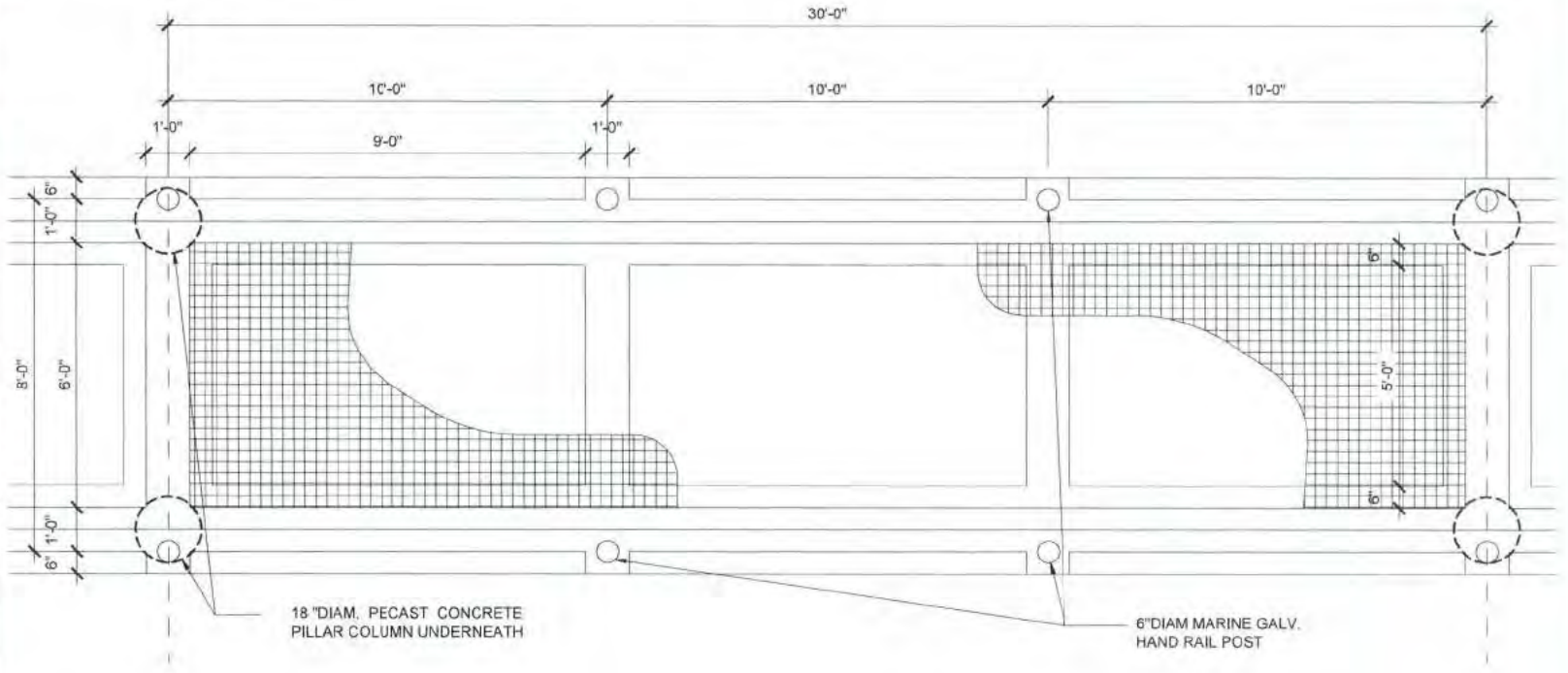
FIGURE-1-PIER PLAN SEGMENTS (SCHEMATIC)

APRIL 26, 2017



Polis Group

POLIS GROUP, LLC.
Architecture, Planning & development corporation
1500 W. 15th Ave., Suite 2000
Denver, CO 80202
TEL (303) 731-0276
FAX (303) 731-0276



18" DIAM. PRECAST CONCRETE
PILLAR COLUMN UNDERNEATH

6" DIAM MARINE GALV.
HAND RAIL POST

ELEVATION

SCALE: 1/4"=1'-0"

MARINA COCO BEACH

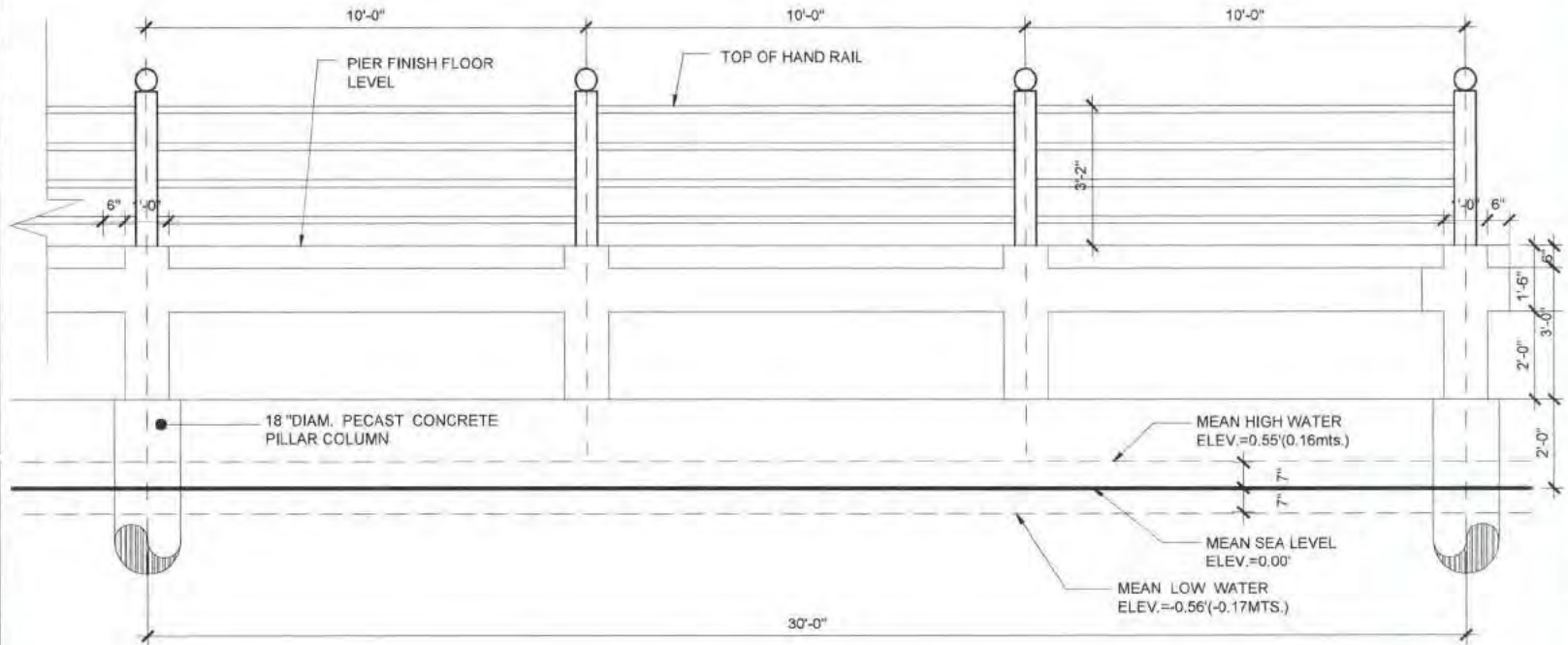
FIGURE-2-ELEVATION

APRIL 17, 2017



Polis Group

POLIS GROUP, LLC.
architecture, planning & development corporation
1450 15th, Suite 200
San Jose, CA 95126
TEL (408) 791-8800
FAX (408) 791-8800



ELEVATION

SCALE: 1/4"=1'-0"

MARINA COCO BEACH

FIGURE-3-ELEVATION

APRIL 17, 2017



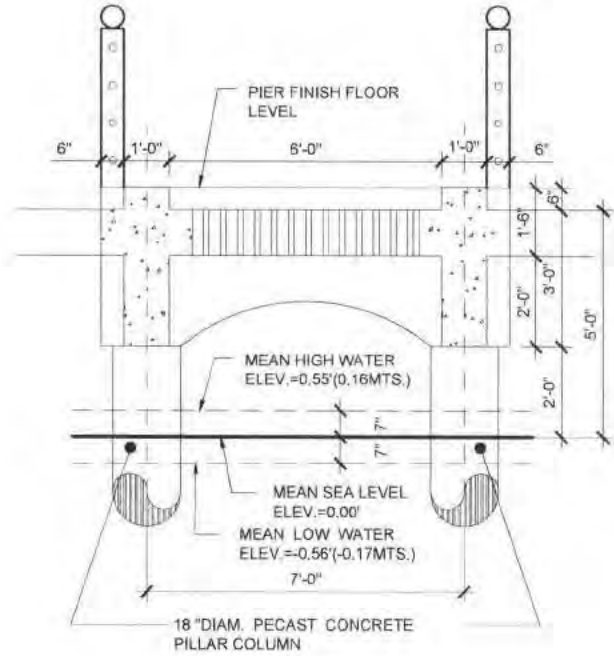
Polis Group

POLIS GROUP, LLC.
architecture, planning & development corporation
COLUMBIA & 1300 U.S. HIGHWAY
SAN JUAN, PUERTO RICO 00927
TEL. (787) 791-0076
FAX (787) 791-0076

MARINA COCO BEACH

FIGURE-4-SECTION

APRIL 17, 2017



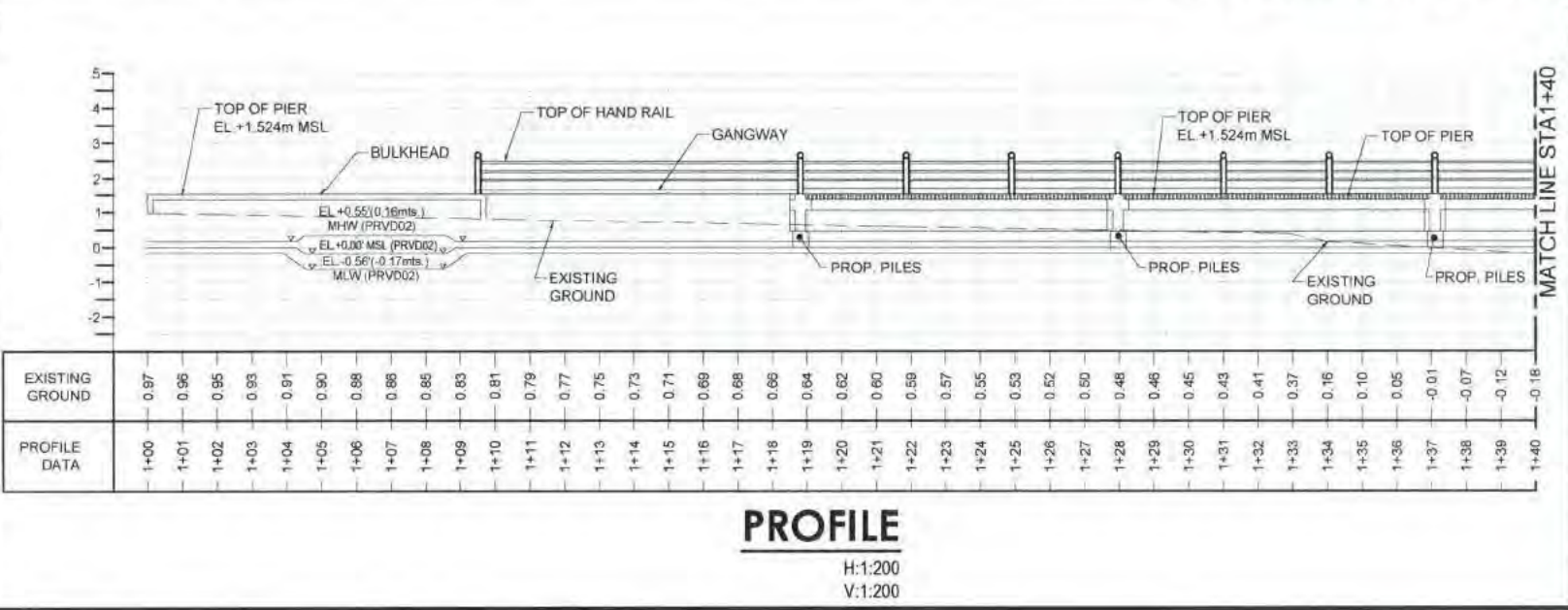
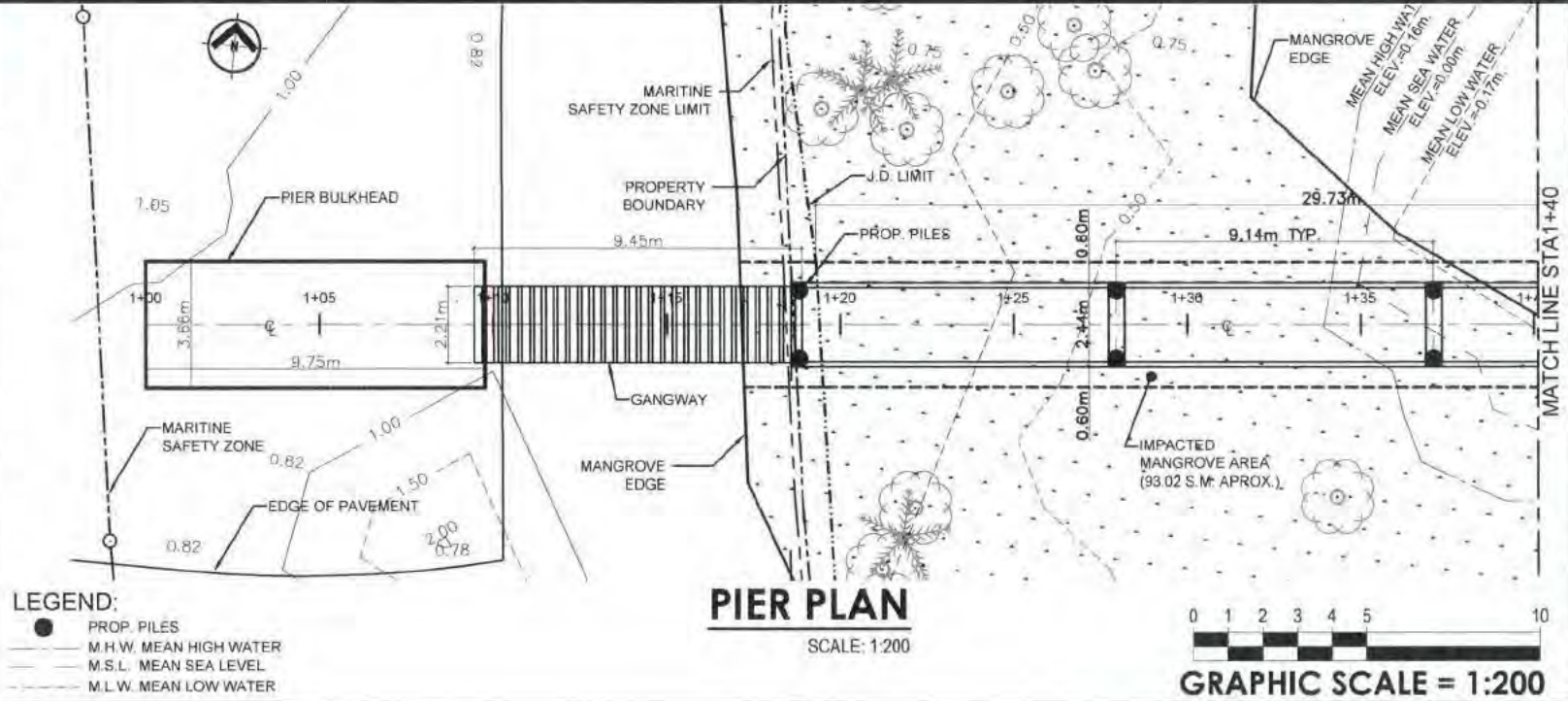
SECTION

SCALE: 1/4"=1'-0"



Polis Group

POLIS GROUP, LLC.
 architecture, planning & development corporation
 1400 N.W. 10th Ave., Suite 200
 Fort Lauderdale, FL 33304
 Tel: (754) 791-4876
 Fax: (754) 791-4878



MARINA COCO BEACH
 FIGURE-5--PIER PLAN & PROFILE
 APRIL 17, 2017



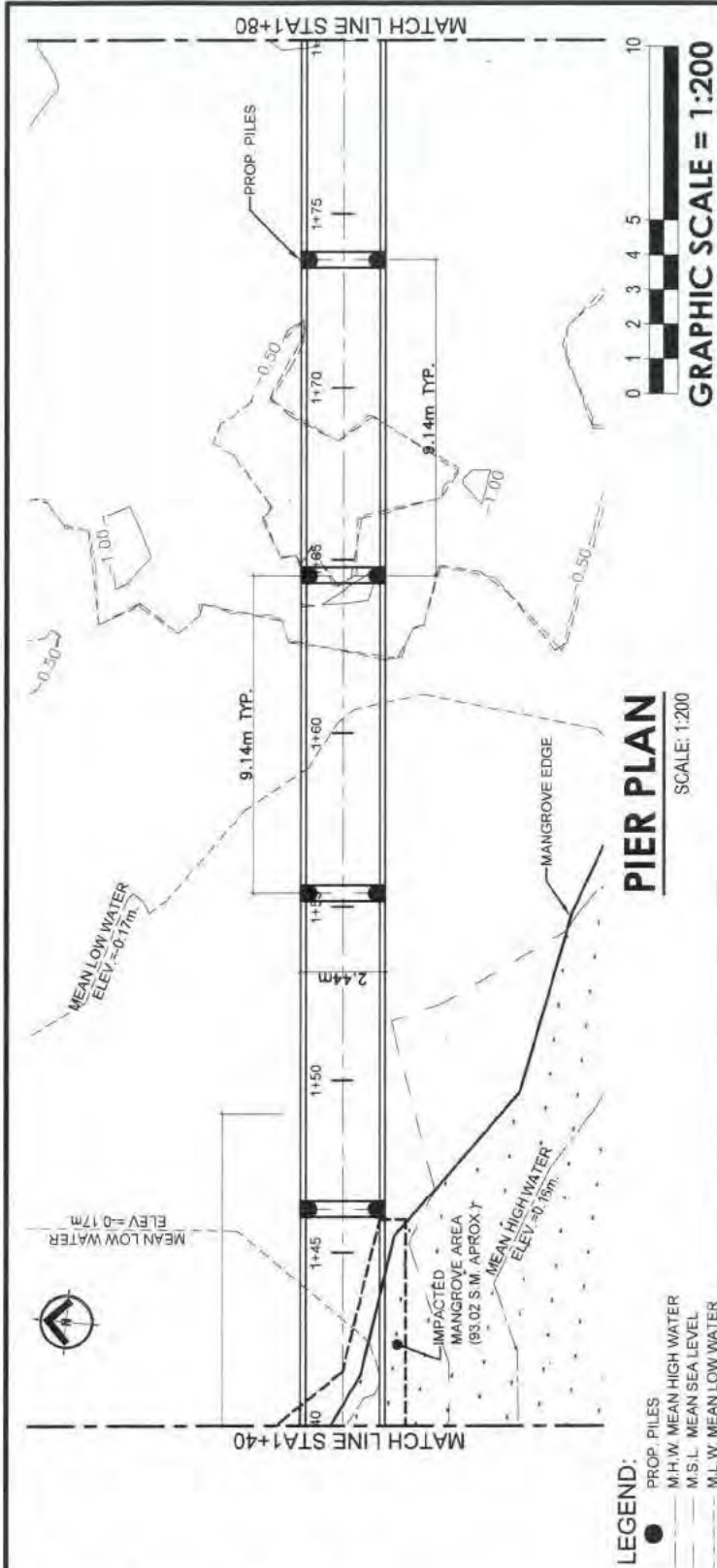
Polis Group

POLIS GROUP, LLC.

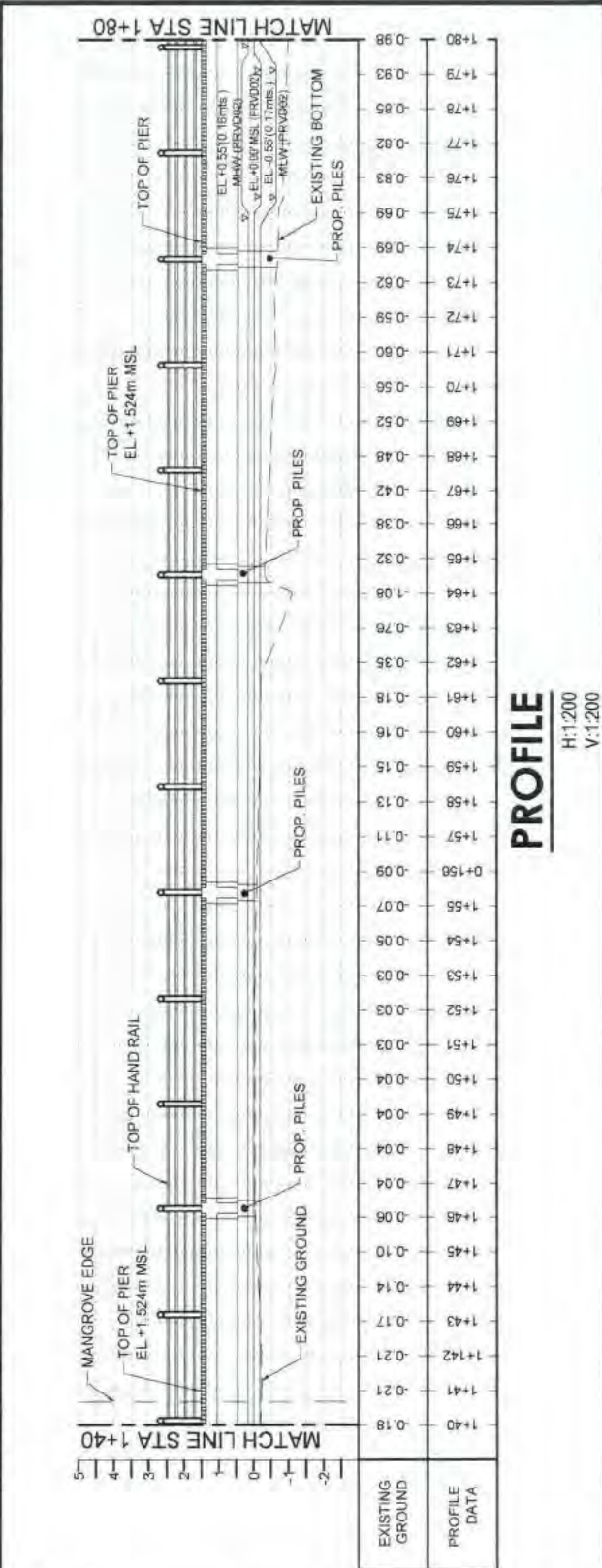
architecture, planning & development corporation

CAVALIER # 1530 URS. BELLSA
SAN JUAN, PUERTO RICO 00927

TEL (787) 764-8878
FAX (787) 764-8878



LEGEND:
 ● PROP. PILES
 — M.H.W. MEAN HIGH WATER
 — M.S.L. MEAN SEA LEVEL
 — M.L.W. MEAN LOW WATER



PROJECT NAME: MARINA COCO BEACH

DATE PLOTTED: APRIL 17, 2017

FIGURE-6-PIER PLAN & PROFILE

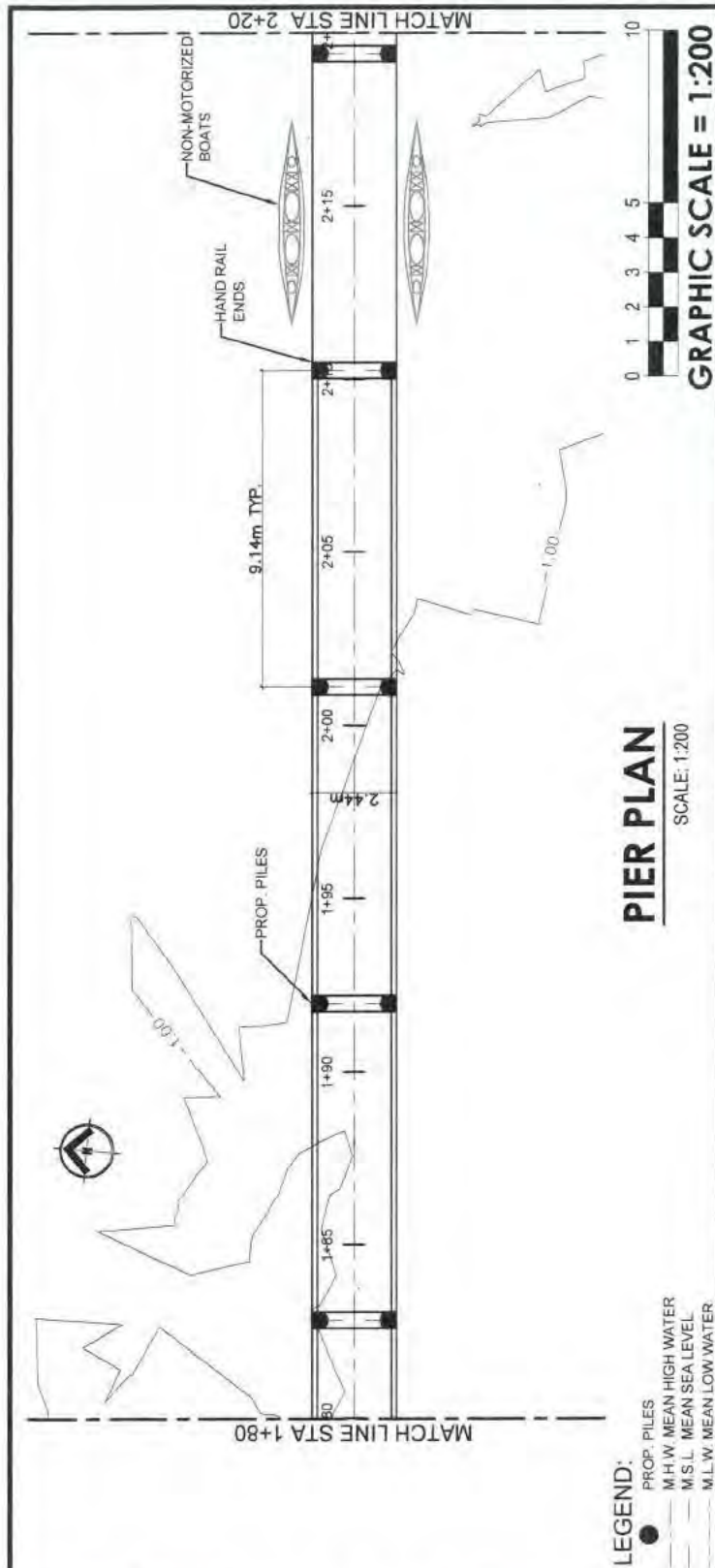


Polis Group

POLIS GROUP, LLC.
 architecture, planning & development corporation

CAVALIER # 1880 URB. BELISA
 SAN JUAN, PUERTO RICO 00927

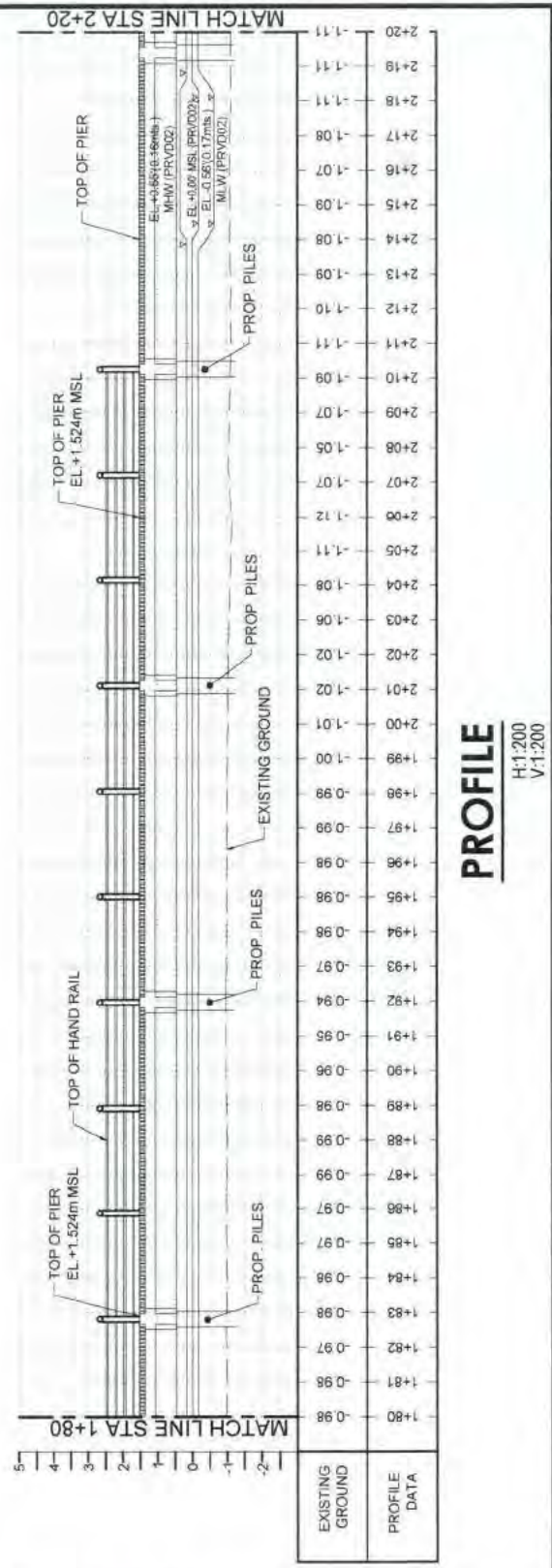
TEL (787) 761-0876
 FAX (787) 761-0876



PROJECT NAME: **MARINA COCO BEACH**

SHEET TITLE: **FIGURE-7-PIER PLAN & PROFILE**

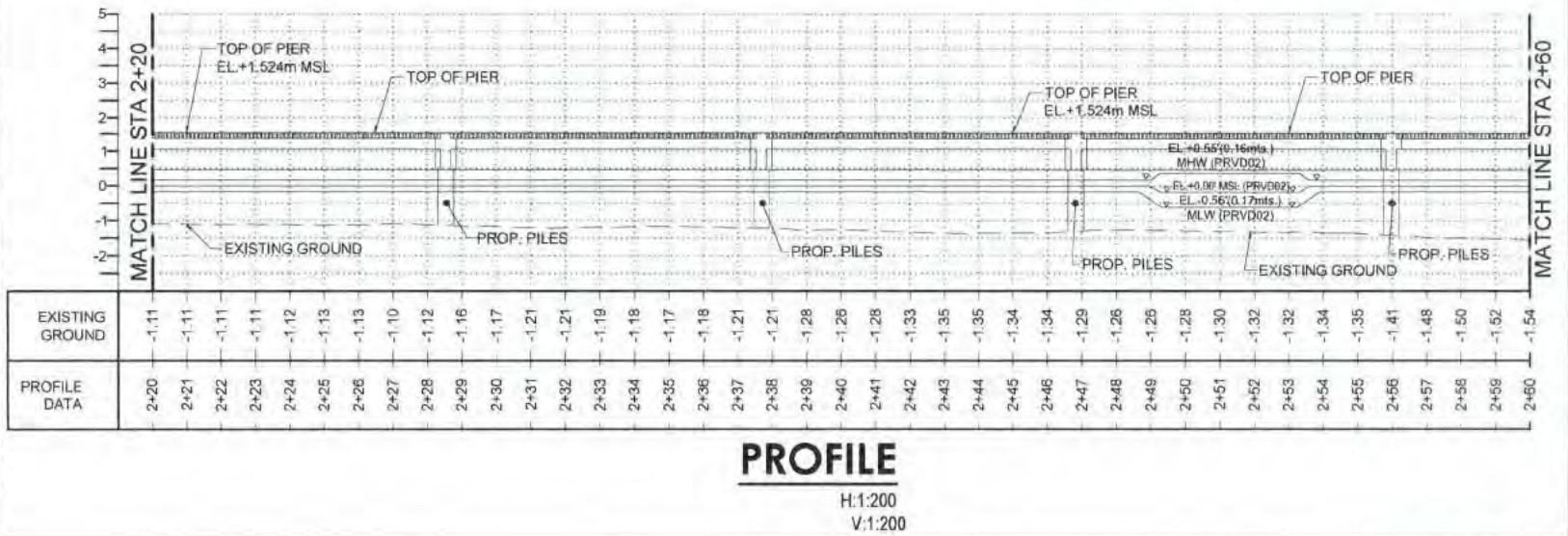
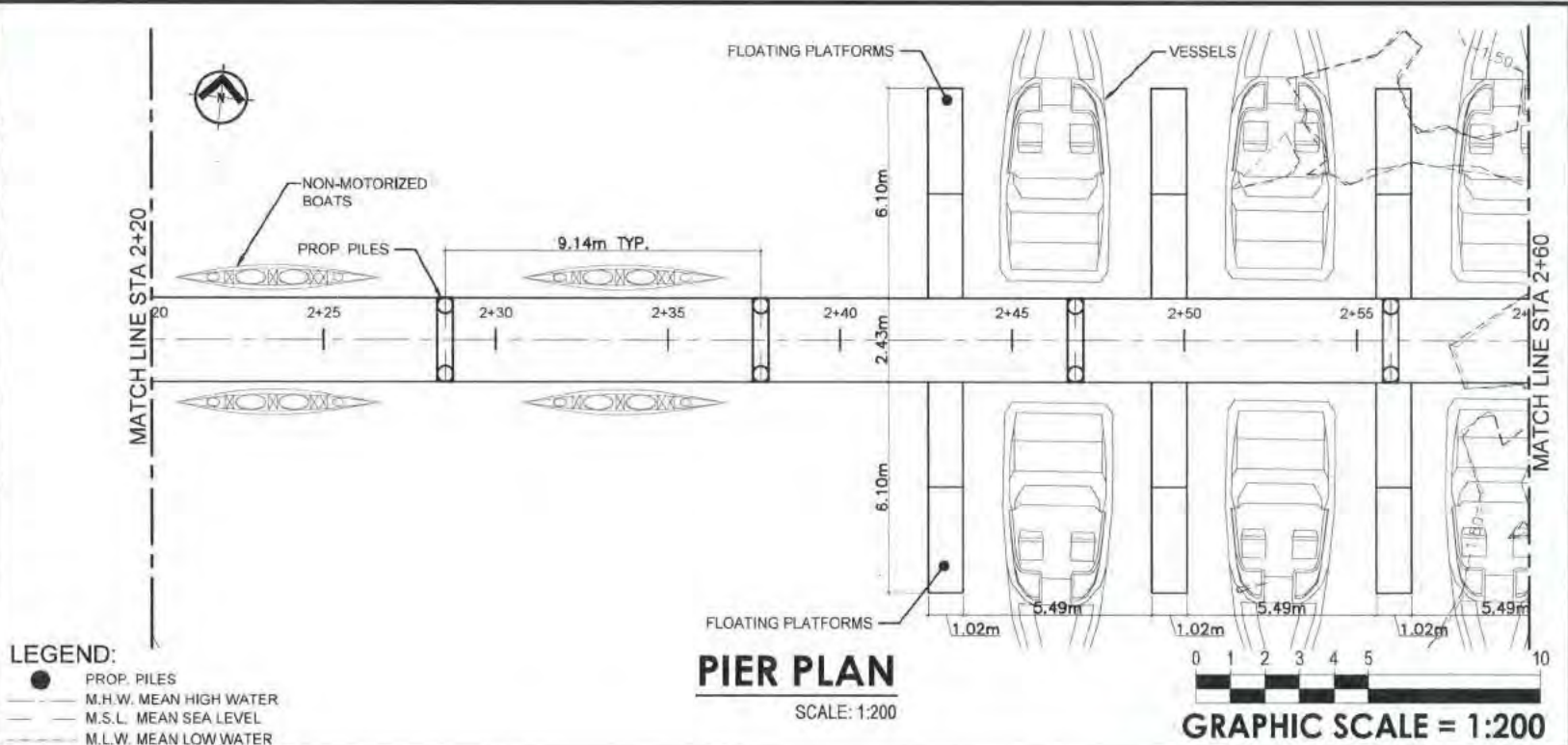
DATE: **APRIL 17, 2017**





Polis Group

POLIS GROUP, LLC.
 Architects, Planning & development corporation
 1500 W. 15th St., Suite 200
 Miami Beach, Florida 33134
 Tel: (305) 761-6000
 Fax: (305) 761-6000



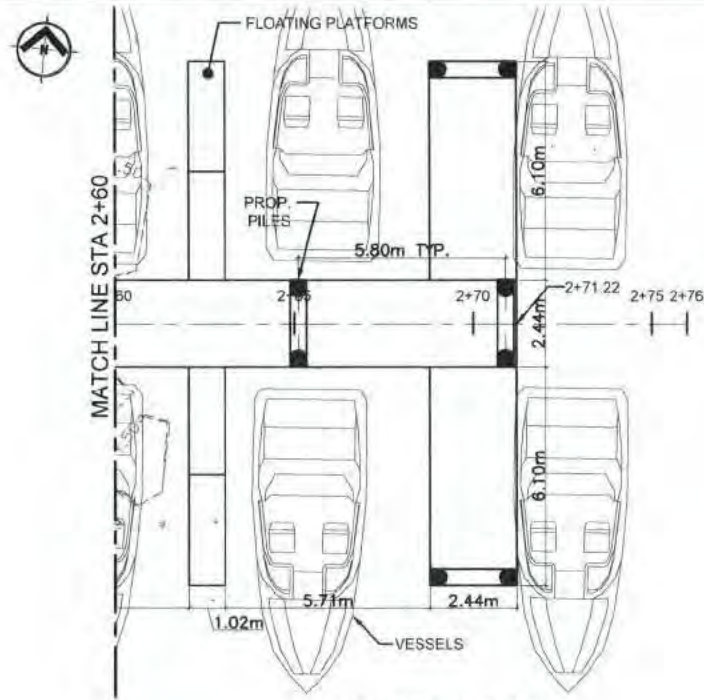
MARINA COCO BEACH
 FIGURE-8-PIER PLAN & PROFILE
 APRIL 26, 2017



Polis Group

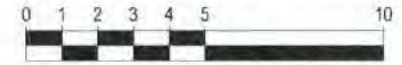
POLIS GROUP, LLC.
 ARCHITECTURE, PLANNING & DEVELOPMENT CORPORATION
 1400 W. 10TH ST., SUITE 100
 DENVER, COLORADO 80202
 TEL: (303) 731-4000
 FAX: (303) 731-4000

- LEGEND:**
- PROP PILES
 - M.H.W. MEAN HIGH WATER
 - - - M.S.L. MEAN SEA LEVEL
 - - - M.L.W. MEAN LOW WATER

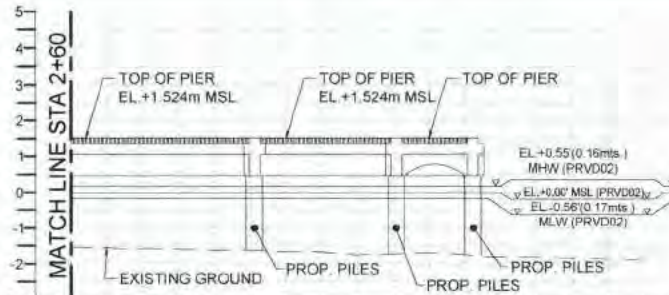


PIER PLAN

SCALE: 1:200



GRAPHIC SCALE = 1:200



EXISTING GROUND	2+60	2+61	2+62	2+63	2+64	2+65	2+66	2+67	2+68	2+69	2+70	2+71	2+72	2+73	2+74	2+75	2+76	2+77
PROFILE DATA	-1.54	-1.55	-1.58	-1.60	-1.62	-1.63	-1.67	-1.68	-1.76	-1.72	-1.70	-1.75	-1.80	-1.82	-1.85	-1.88		

PROFILE

H:1:200
 V:1:200

MARINA COCO BEACH

FIGURE-9-PIER PLAN & PROFILE

APRIL 17, 2017



Coco Beach Marina Parcel

Aerial Photo

Scale 1:20,000