

BULKHEAD AND ASSOCIATED COASTAL IMPROVEMENTS

PERMIT SKETCHES

FOR

TRG NORTH FLAGLER VENTURE LTD

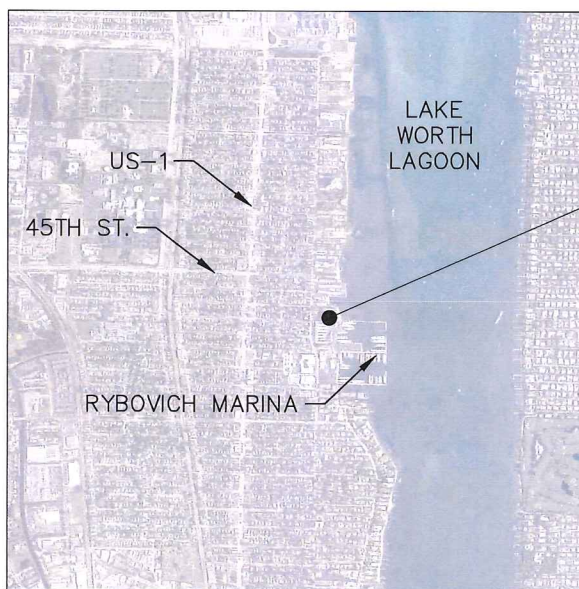
LOCATED IN

SECTION 73, TOWNSHIP 43S, RANGE 43E



PROJECT LOCATION

CITY OF WEST PALM BEACH, PALM BEACH COUNTY



PROJECT LOCATION

VICINITY
N.T.S.

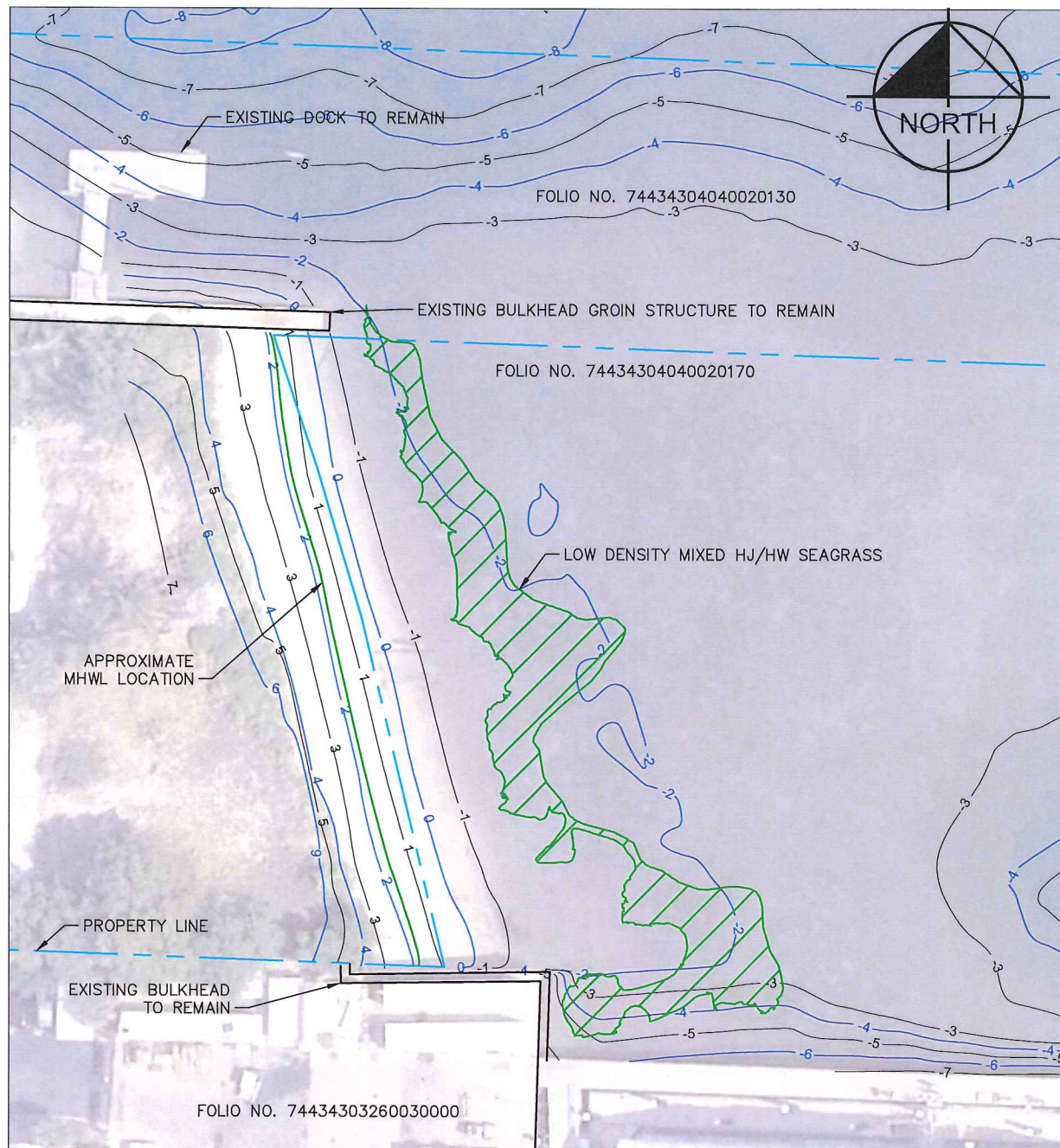


INDEX OF SHEETS

SHEET	DESCRIPTION
1.....	COVER SHEET
2.....	EXISTING CONDITIONS
3.....	DEMOLITION PLAN
4.....	PLAN VIEW
5-6.....	PROFILE 1, 2, & 3
7.....	GENERAL NOTES



SCALE AS NOTED	<p>© 2016 KIMLEY-HORN AND ASSOCIATES, INC. 445 24TH STREET, SUITE 200, VERO BEACH, FL 32960 PHONE: 772-794-4100 FAX: 772-794-4130 WWW.KIMLEY-HORN.COM</p>	DATE 12/12/2016	COVER SHEET	DESIGN ENGINEER: CHARLES T. FONTAINE III	SHEET NUMBER 1
DESIGNED BY CTF		PROJECT NO. 044800006	TRG NORTH FLAGLER BULKHEAD AND ASSOCIATED COASTAL IMPROVEMENTS	FLORIDA P.E. LICENSE NUMBER: 73042	1 of 7
DRAWN BY CTF				DATE: 12/12/16	
CHECKED BY CTF					



LEGEND



APPROXIMATE LIMITS OF SEAGRASS



EXISTING CONTOUR

GRAPHIC SCALE IN FEET

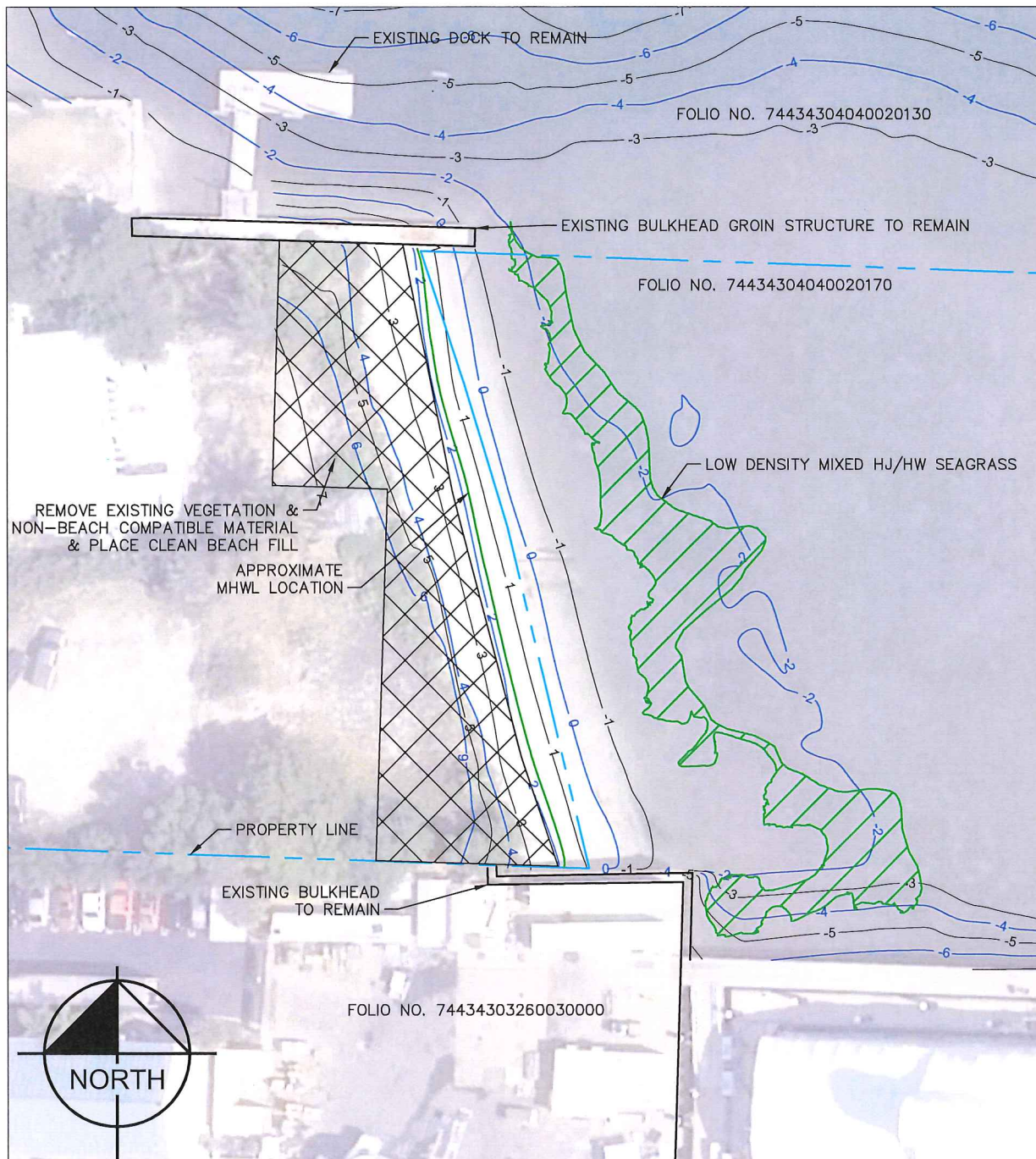


NOTES:

1. ELEVATIONS BASED UPON NATIONAL GEODETIC VERTICAL DATUM, 1929 (NGVD 1929).
2. SURVEY DATA FROM A SURVEY BY TERRAQUATIC, INC. SURVEYING & MAPPING. TITLED "SURVEY REFERENCE NUMBER 16-434" DATED 8-01-2016.
3. LOCATION OF SEAGRASS HABITATS FROM A SURVEY PERFORMED BY COASTAL ECO-GROUP, INC. TITLED 2016 TRG SEAGRASS SURVEY - SEAGRASS HABITATS WITHIN PHASE I AND PHASE II SURVEY AREAS - FIGURE 1. PROVIDED BY COASTAL ECO-GROUP, INC. SEAGRASS SURVEY PERFORMED JULY/AUGUST 2016.

SCALE AS NOTED	DATE 12/12/2016	EXISTING CONDITIONS	DESIGN ENGINEER: CHARLES T. FONTAINE III FLORIDA P.E. LICENSE NUMBER: 73042 DATE: 12/12/16	SHEET NUMBER 2 2 of 7
DESIGNED BY CTF	PROJECT NO. 044800006	TRG NORTH FLAGLER BULKHEAD AND ASSOCIATED COASTAL IMPROVEMENTS		
DRAWN BY CTF				
CHECKED BY CTF				

Kimley»Horn
© 2016 KIMLEY-HORN AND ASSOCIATES, INC.
445 24TH STREET, SUITE 200, VERO BEACH, FL 32960
PHONE: 772-794-4100 FAX: 772-794-4130
WWW.KIMLEY-HORN.COM



LEGEND

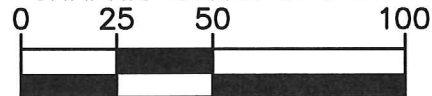


APPROXIMATE LIMITS OF SEAGRASS



EXISTING CONTOUR

GRAPHIC SCALE IN FEET



NOTES:

1. ELEVATIONS BASED UPON NATIONAL GEODETIC VERTICAL DATUM, 1929 (NGVD 1929).
2. SURVEY DATA FROM A SURVEY BY TERRAQUATIC, INC. SURVEYING & MAPPING. TITLED "SURVEY REFERENCE NUMBER 16-434" DATED 8-01-2016.
3. LOCATION OF SEAGRASS HABITATS FROM A SURVEY PERFORMED BY COASTAL ECO-GROUP, INC. TITLED 2016 TRG SEAGRASS SURVEY - SEAGRASS HABITATS WITHIN PHASE I AND PHASE II SURVEY AREAS - FIGURE 1. PROVIDED BY COASTAL ECO-GROUP, INC. SEAGRASS SURVEY PERFORMED JULY/AUGUST 2016.

SCALE	AS NOTED
DESIGNED BY	CTF
DRAWN BY	CTF
CHECKED BY	CTF

Kimley»Horn

© 2016 KIMLEY-HORN AND ASSOCIATES, INC.
445 24TH STREET, SUITE 200, VERO BEACH, FL 32960
PHONE: 772-794-4100 FAX: 772-794-4130
WWW.KIMLEY-HORN.COM

DATE	12/12/2016
PROJECT NO.	044800006

DEMOLITION PLAN

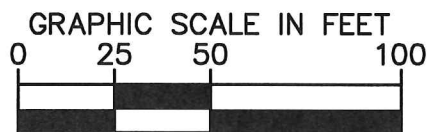
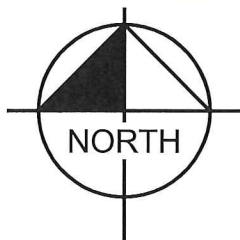
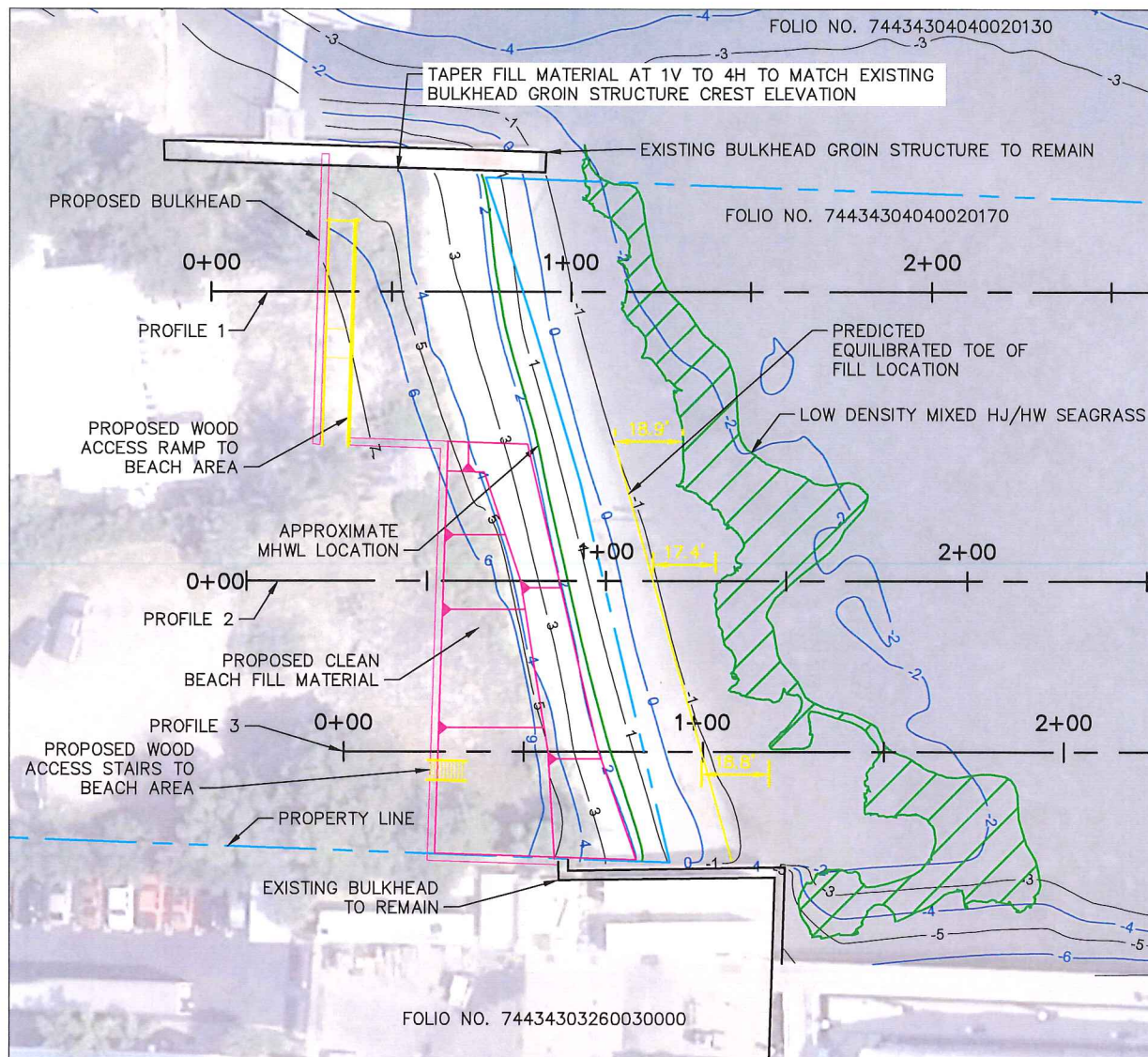
TRG NORTH FLAGLER
BULKHEAD AND ASSOCIATED COASTAL
IMPROVEMENTS

DESIGN ENGINEER:	CHARLES T. FONTAINE III
FLORIDA P.E. LICENSE NUMBER:	73042
DATE:	12/12/16

SHEET NUMBER

3

3 of 7



LEGEND





APPROXIMATE LIMITS OF SEAGRASS

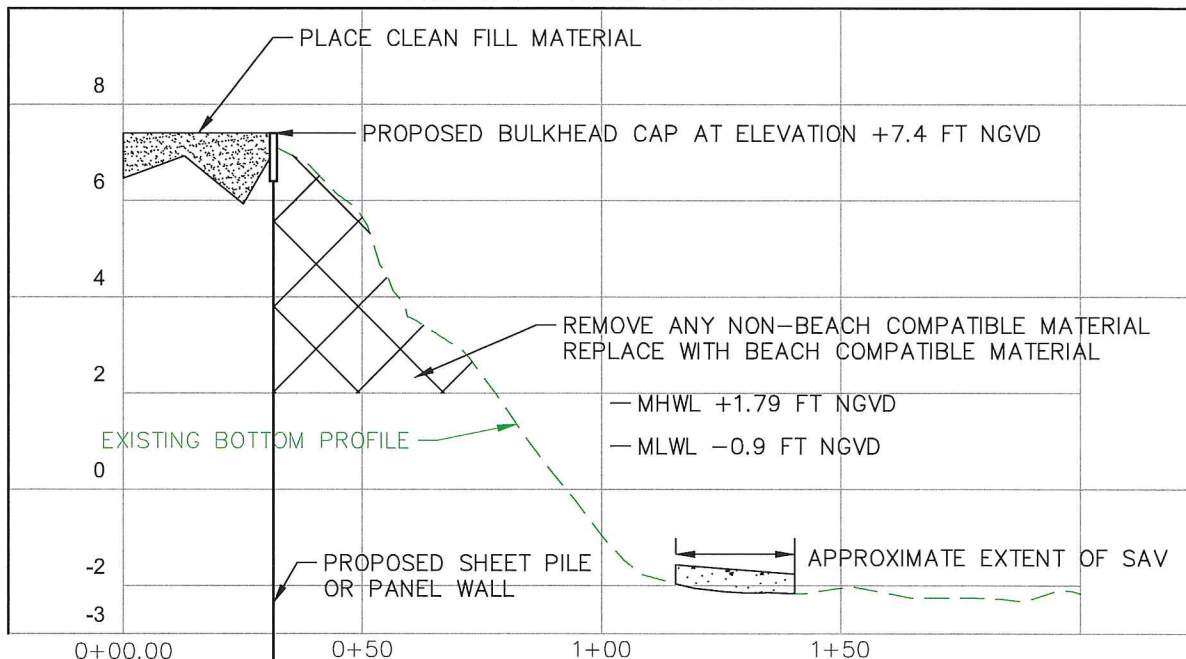
EXISTING CONTOUR

NOTES:

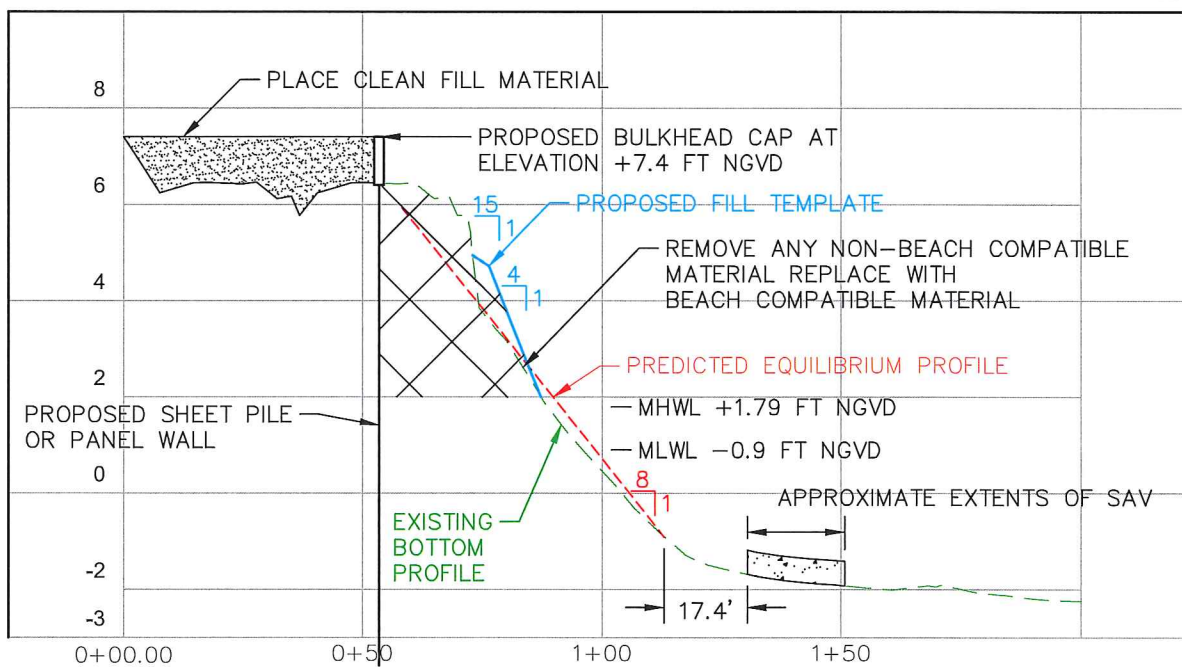
1. ELEVATIONS BASED UPON NATIONAL GEODETIC VERTICAL DATUM, 1929 (NGVD 1929).
2. SURVEY DATA FROM A SURVEY BY TERRAQUATIC, INC. SURVEYING & MAPPING. TITLED "SURVEY REFERENCE NUMBER 16-434" DATED 8-01-2016.
3. LOCATION OF SEAGRASS HABITATS FROM A SURVEY PERFORMED BY COASTAL ECO-GROUP, INC. TITLED 2016 TRG SEAGRASS SURVEY - SEAGRASS HABITATS WITHIN PHASE I AND PHASE II SURVEY AREAS - FIGURE 1. PROVIDED BY COASTAL ECO-GROUP, INC. SEAGRASS SURVEY PERFORMED JULY/AUGUST 2016.

SCALE AS NOTED	Kimley»Horn © 2016 KIMLEY-HORN AND ASSOCIATES, INC. 445 24TH STREET, SUITE 200, VERO BEACH, FL 32960 PHONE: 772-794-4100 FAX: 772-794-4130 WWW.KIMLEY-HORN.COM	DATE 12/12/2016	PLAN VIEW TRG NORTH FLAGLER BULKHEAD AND ASSOCIATED COASTAL IMPROVEMENTS	DESIGN ENGINEER:  CHARLES T. FONTAINE III	SHEET NUMBER 4
DESIGNED BY CTF		PROJECT NO. 044800006		FLORIDA P.E. LICENSE NUMBER: 73042	4 of 7
DRAWN BY CTF				DATE: 	
CHECKED BY CTF					

PROFILE 1 – NORTH PROFILE



PROFILE 2 – CENTER PROFILE

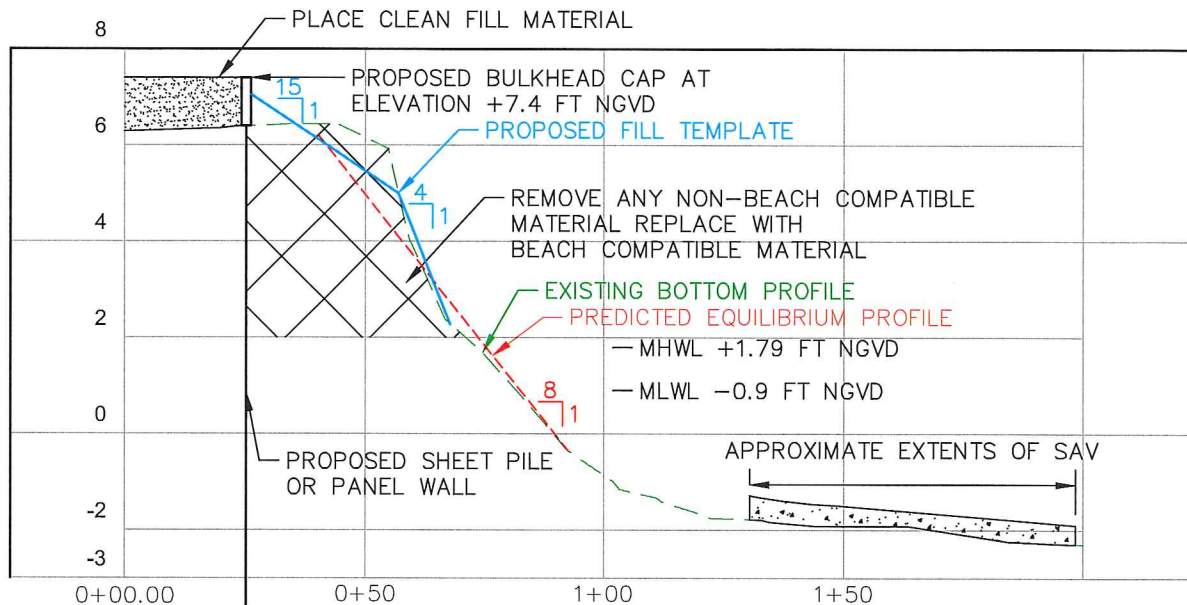


NOTES:

1. WATER ELEVATION DATA FROM NOAA TIDE STATION 8722371. MEAN HIGH TIDE ELEVATION EQUAL TO ABOUT +1.79 FT NGVD 1929.
2. ELEVATIONS BASED UPON NATIONAL GEODETIC VERTICAL DATUM, 1929 (NGVD 1929).
3. SURVEY DATA FROM A SURVEY BY TERRAQUATIC, INC. SURVEYING & MAPPING. TITLED "SURVEY REFERENCE NUMBER 16-434" DATED 8-01-2016.
4. LOCATION OF SEAGRASS HABITATS FROM A SURVEY PERFORMED BY COASTAL ECO-GROUP, INC. TITLED 2016 TRG SEAGRASS SURVEY - SEAGRASS HABITATS WITHIN PHASE I AND PHASE II SURVEY AREAS - FIGURE 1. PROVIDED BY COASTAL ECO-GROUP, INC. SEAGRASS SURVEY PERFORMED JULY/AUGUST 2016.
5. THE FILL TEMPLATE INCLUDES THE PLACEMENT OF APPROXIMATELY 80 CY OF CLEAN BEACH FILL MATERIAL.
6. UP TO APPROXIMATELY 1,200 CY OF NON-BEACH COMPATIBLE MATERIAL WILL BE REMOVED AND REPLACED WITH CLEAN BEACH FILL MATERIAL.

SCALE AS NOTED	<p>© 2016 KIMLEY-HORN AND ASSOCIATES, INC. 445 24TH STREET, SUITE 200, VERO BEACH, FL 32960 PHONE: 772-794-4100 FAX: 772-794-4130 WWW.KIMLEY-HORN.COM</p>	DATE 12/12/2016	<p>PROFILE VIEW</p> <p>TRG NORTH FLAGLER BULKHEAD AND ASSOCIATED COASTAL IMPROVEMENTS</p>	DESIGN ENGINEER: CHARLES T. FONTAINE III	SHEET NUMBER 5
DESIGNED BY CTF		PROJECT NO. 044800006		FLORIDA P.E. LICENSE NUMBER: 73042	DATE: 12/12/16
DRAWN BY CTF					
CHECKED BY CTF					

PROFILE 3 - SOUTH PROFILE



NOTES:

1. WATER ELEVATION DATA FROM NOAA TIDE STATION 8722371. MEAN HIGH TIDE ELEVATION EQUAL TO ABOUT +1.79 FT NGVD 1929.
2. ELEVATIONS BASED UPON NATIONAL GEODETIC VERTICAL DATUM, 1929 (NGVD 1929).
3. SURVEY DATA FROM A SURVEY BY TERRAQUATIC, INC. SURVEYING & MAPPING. TITLED "SURVEY REFERENCE NUMBER 16-434" DATED 8-01-2016.
4. LOCATION OF SEAGRASS HABITATS FROM A SURVEY PERFORMED BY COASTAL ECO-GROUP, INC. TITLED 2016 TRG SEAGRASS SURVEY - SEAGRASS HABITATS WITHIN PHASE I AND PHASE II SURVEY AREAS - FIGURE 1. PROVIDED BY COASTAL ECO-GROUP, INC. SEAGRASS SURVEY PERFORMED JULY/AUGUST 2016.
5. THE FILL TEMPLATE INCLUDES THE PLACEMENT OF APPROXIMATELY 80 CY OF CLEAN BEACH FILL MATERIAL.
6. UP TO APPROXIMATELY 1,200 CY OF NON-BEACH COMPATIBLE MATERIAL WILL BE REMOVED AND REPLACED WITH CLEAN BEACH FILL MATERIAL.

SCALE AS NOTED	Kimley»Horn	DATE 12/12/2016	PROFILE VIEW	DESIGN ENGINEER: CHARLES T. FONTAINE III	SHEET NUMBER 6
DESIGNED BY CTF	© 2016 KIMLEY-HORN AND ASSOCIATES, INC. 445 24TH STREET, SUITE 200, VERO BEACH, FL 32960 PHONE: 772-794-4100 FAX: 772-794-4130 WWW.KIMLEY-HORN.COM	PROJECT NO. 044800006	TRG NORTH FLAGLER BULKHEAD AND ASSOCIATED COASTAL IMPROVEMENTS	FLORIDA P.E. LICENSE NUMBER: 73042	
DRAWN BY CTF				DATE: 12/12/16	6 of 7
CHECKED BY CTF					

GENERAL NOTES:

1. THESE DRAWINGS ARE "PERMIT SKETCHES" INTENDED TO FACILITATE THE EVALUATION OF THE PROPOSED PROJECT. THESE DRAWINGS ARE NOT TO BE USED FOR CONSTRUCTION.
2. AERIAL OBTAINED FROM FDOT APLUS SYSTEM AND IS DATED 2015.
3. WATER ELEVATION DATA FROM NOAA TIDE STATION 8722371. MEAN HIGH TIDE ELEVATION EQUAL TO ABOUT +1.79 FT NGVD 1929.
4. ELEVATIONS BASED UPON NATIONAL GEODETIC VERTICAL DATUM, 1929 (NGVD 1929).
5. SURVEY DATA FROM A SURVEY BY TERRAQUATIC, INC. SURVEYING & MAPPING. TITLED "SURVEY REFERENCE NUMBER 16-434" DATED 8-01-2016.
6. LOCATION OF SEAGRASS HABITATS FROM A SURVEY PERFORMED BY COASTAL ECO-GROUP, INC. TITLED 2016 TRG SEAGRASS SURVEY - SEAGRASS HABITATS WITHIN PHASE I AND PHASE II SURVEY AREAS - FIGURE 1. PROVIDED BY COASTAL ECO-GROUP, INC. SEAGRASS SURVEY PERFORMED JULY/AUGUST 2016.
7. PROPOSED FILL TO BE CLEAN BEACH COMPATIBLE FILL MATERIAL.
8. THE CONTRACTOR SHALL INSTALL & MAINTAIN TURBIDITY CURTAIN BARRIER AROUND THE PROPOSED BULKHEAD, FILL REMOVAL, AND FILL PLACEMENT ACTIVITIES.
9. NO FILL TO BE PLACED OR REMOVED FROM SEAWARD OF THE MHWL.
10. PROPOSED BULKHEAD TO BE CONSTRUCTED AT OR LANDWARD OF THE MHWL.



SCALE AS NOTED	Kimley»Horn © 2016 KIMLEY-HORN AND ASSOCIATES, INC. 445 24TH STREET, SUITE 200, VERO BEACH, FL 32960 PHONE: 772-794-4100 FAX: 772-794-4130 WWW.KIMLEY-HORN.COM	DATE 12/12/2016	GENERAL NOTES TRG NORTH FLAGLER BULKHEAD AND ASSOCIATED COASTAL IMPROVEMENTS	DESIGN ENGINEER: <i>Charles T. Fontaine III</i> CHARLES T. FONTAINE III	SHEET NUMBER 7
DESIGNED BY CTF		PROJECT NO. 044800006		FLORIDA P.E. LICENSE NUMBER: 73042	7 of 7
DRAWN BY CTF				DATE: 12/12/16	
CHECKED BY CTF					