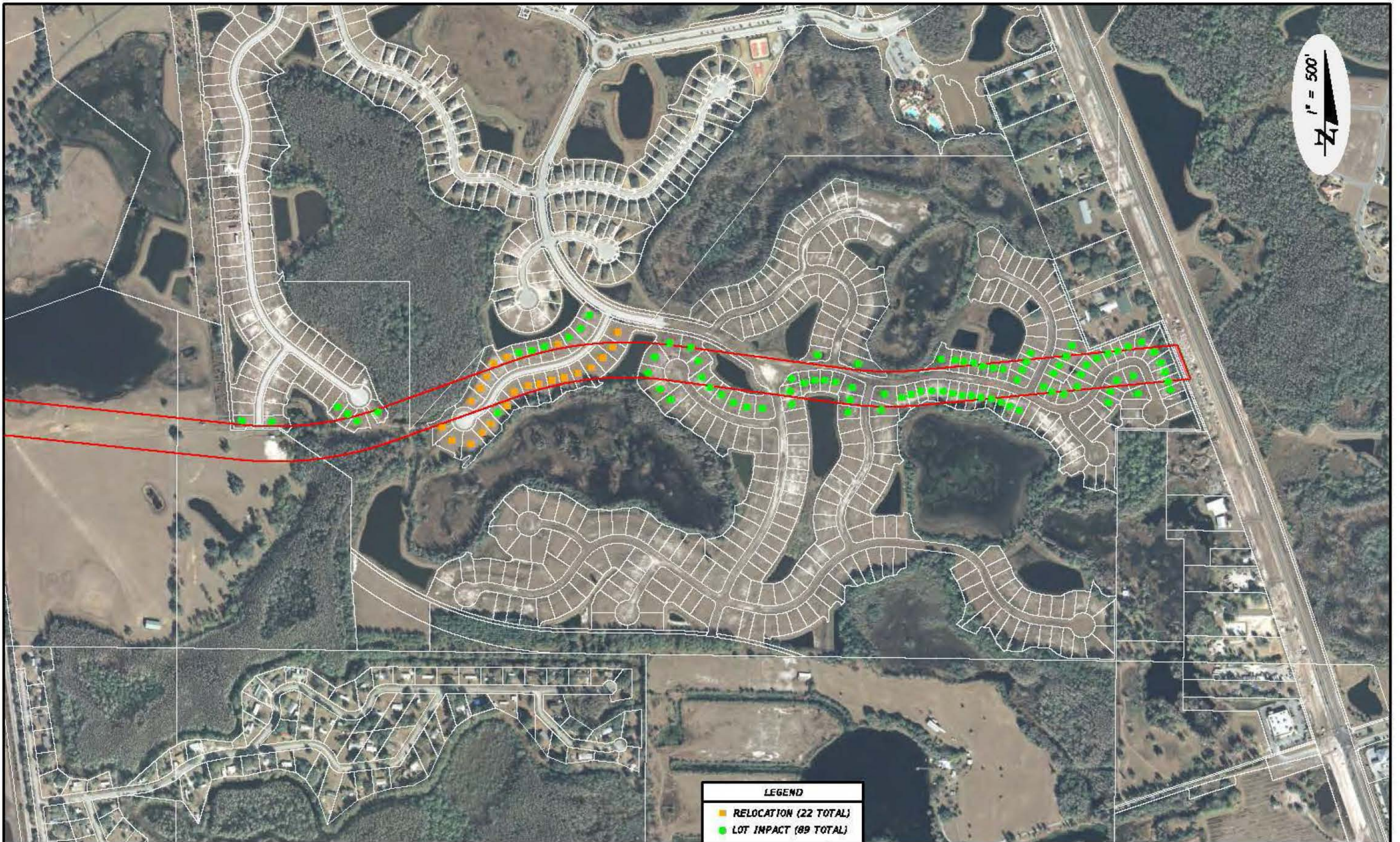


Appendix E-5
Residential Impacts Exhibit



LEGEND	
■	RELOCATION (22 TOTAL)
●	LOT IMPACT (89 TOTAL)

6889 EAST FOWLER AVENUE, TAMPA, FLORIDA 33617
 COA# 29065 THOMAS J. MONTGOMERY, P.E. NO. 35008

NV5, INC.

PASCO COUNTY

RIDGE ROAD EXTENSION

**ALTERNATIVE 2
 RESIDENTIAL IMPACTS**