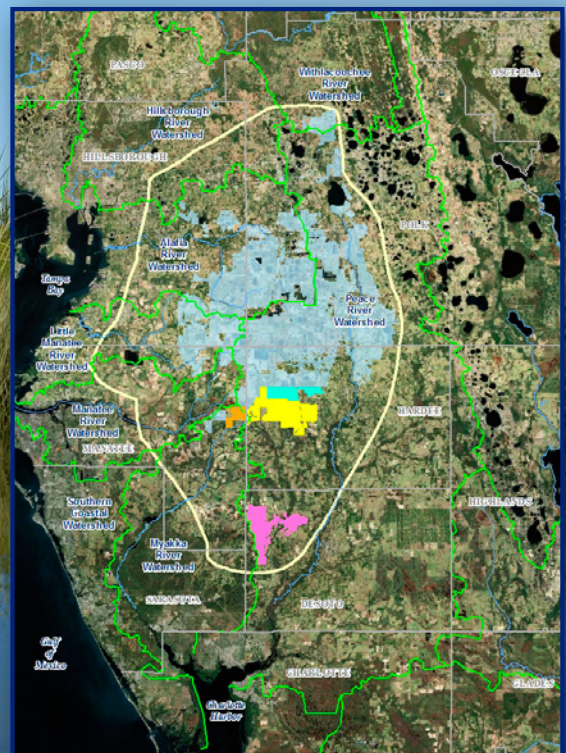


CHAPTER 7

REFERENCES



CHAPTER 7 REFERENCES

- Access Environmental Associates, Inc., 2002, Cultural Resource Survey (Section 106 Review), East Wauchula Tower Site, 3419 State Road 64 East, Wauchula, Hardee County, Florida, prepared for Clearshot Communications, February.
- Agency for Toxic Substances and Disease Registry (ATSDR), 2006, ATSDR's Concept Paper on Evaluation of Radiological Data from EPA's Florida Phosphate Mining Initiative, June 30.
- Allen, Dee/Mosaic Fertilizer, LLC, 2012, Personal communication with Randy Bushey/CH2M HILL, August.
- Allen, Dee/Mosaic Fertilizer, LLC, 2013, Personal communication with Tom Simpson /CH2M HILL, February.
- Alvarez, Calvin/Chief, Bureau of Mining and Minerals Regulation, Florida Department of Environmental Protection, 2011, personal Communication with Steve Gong/CH2M HILL, May 26, 2011.
- Archaeological Consultants, Inc., 1999, A Cultural Resource Assessment Survey IMC Reynolds Property Hillsborough Co, FL.
- Archaeological Consultants, Inc., 2001, Cultural Resource Assessment Survey of 438.7 Acres Located in the South Pasture Area of the CF Industries, Hardee Phosphate Complex Property, Hardee Co, FL. October.
- Archaeological Consultants, Inc., 2002, A Cultural Assessment of 40 Acres located in the South Pasture Study Area of the CF Industries, Hardee Phosphate Complex Property, Hardee Co, FL. January.
- Archaeological Consultants, Inc., 2003a, A Cultural Resource Assessment Survey of CF Industries, Inc.'s South Pasture Mine Extension DRI, Hardee Co, FL
- Archaeological Consultants, Inc., 2003b, Cultural Resource Reconnaissance Survey/Section 106 Review – Proposed Myakka City Communication Tower Site, prepared for URS Corporation, October.
- Ardaman & Associates, 2011a, Existing Condition Floodplains of Ona Mine Tract, Hardee County, Florida, Prepared for Mosaic for inclusion in Ona Mine permit application, May.
- Ardaman & Associates, 2011b, Floodplain Report Hydrologic and Hydraulic Evaluations for Desoto Mine, Desoto County, Florida, Prepared for Mosaic for inclusion in Desoto Mine permit application, June 2011.
- Austin, Robert, 1990, Cultural Resource Survey of a 1000 Acre Addition to Agrico Chemical Company's Proposed Phosphate Mining Area, Hardee County, Florida.
- Barcelo, Mark and Ron Basso. 1993. Computer Model of Groundwater Flow in the Eastern Tampa Bay Water Use Caution Area, Brooksville. Southwest Florida Water Management District Report. 102 p.
- Basso, Ron, 2003, Predicted Change in the Hydrologic Conditions along the Upper Peace River due to a Reduction in Ground-Water Withdrawals, Hydrologic Evaluation Section, July.
- Basso, Ron, and Richard Schultz, 2003, Long-Term Variation in Rainfall and its Effect on Peace River Flow in West-Central Florida, Hydrologic Evaluation Section, Southwest Florida Water Management District, July.
- Batcho, David G., and Jerald L. Milanich, 1978, Archaeological and Historical Resources Within the Little Payne Mining Tract, Polk and Hardee Counties, Florida – 1978, The Florida State Museum, Department of Social Sciences. <http://core.tdar.org/document/111997>, FMSF Report No. 106.

- 1 BCI Engineers & Scientists, Inc. (BCI), 2010a, South Pasture Extension Stream Restoration Plan,
2 Prepared for CF Industries, Inc., March.
- 3 BCI Engineers & Scientists, Inc. (BCI), 2010b, Integrated Simulations for the South Pasture Extension
4 Mine for Pre-Mining and Post-Reclamation Conditions, Prepared for CF Industries, Inc., Wauchula, FL,
5 March.
- 6 Beach, M. and D. Chan. 2003. Southern District Groundwater Flow Model, Version 1.0. Southwest Florida
7 Water Management District, Hydrologic Evaluation Section. August.
- 8 Berndt, Marian P. and Brian G. Katz, 1992, Hydrogeochemistry of the Surficial and Intermediate Aquifer
9 Systems in Florida. U.S. Geological Survey Water Resources Investigations Report 91-4186, Prepared in
10 Cooperation with the Florida Department of Environmental Regulation, Tallahassee, Florida. Accessed
11 via internet at <http://pubs.usgs.gov/wri/1991/4186/report.pdf>. Accessed January 6, 2012.
- 12 Biological Research Associates (BRA), 2006a, Horse Creek Stewardship Program – Summary of
13 Historical Information On Water Quantity, Quality, and Aquatic Biology, April.
- 14 Biological Research Associates (BRA), 2006b, Listed Species Survey, Wingate Extension and Wingate
15 East, Manatee County, Florida. November.
- 16 Biological Research Associates (BRA), 2007, Listed Species Report for CF Industries South Pasture Mine
17 Extension, August.
- 18 Biological Research Associates (BRA), 2008, Mosaic Wingate Facility Bioassessment Report, Wet
19 Season 2008.
- 20 Birky, Brian K. 2011. Radiation Exposure and Risk in the Central Florida Phosphate Mining Region.
21 Florida Industrial and Phosphate Research Institute Bartow, FL.
- 22 Brown, Mark T., 2005, Landscape Restoration following phosphate mining: 30 years of co-evolution of
23 science, industry and regulation, Ecological Engineering, Vol. 24 (309-329).
- 24 Brown, R.B., 1992, Soil Classification, Identification, and Survey, The Florida Cooperative Extension
25 Service, accessed via the internet at: <http://ufdc.ufl.edu/UF00078698/00001/2j>, Accessed January 3,
26 2013.
- 27 Brown, Mark T., and Susan M. Carstenn, 2009, Successional Trajectories of Constructed Forested
28 Wetlands, FIPR Pub. No. 03-142-231.
- 29 Buhlmann, K. A., 1998, "Ecology, terrestrial habitat use, and conservation of a freshwater turtle
30 assemblage inhabiting a seasonally fluctuating wetland with emphasis on the life history of *Deirochelys*
31 *reticularia*," Ph.D. diss., University of Georgia, Athens. Available for review at the University of Georgia
32 Main Library, Athens, Georgia.
- 33 Bush, Peter W., and Richard H. Johnston, 1988, Ground-water hydraulics, regional flow, and ground-
34 water development of the Floridan aquifer system in Florida and in parts of Georgia, South Carolina, and
35 Alabama: U.S. Geological Survey Professional Paper 1403-C, 80 p., 17 plates. Available via the internet
36 at: <http://pubs.usgs.gov/pp/1403c/>.
- 37 Cantrell, Richard, 2011, Permitting, Florida Department of Environmental Protection, PowerPoint
38 presentation, June.
- 39 Cardno ENTRIX. 2011a. Listed Wildlife Survey Results for Desoto Mine in Desoto County, Florida. June.
- 40 Cardno ENTRIX, 2011b, Mosaic Wingate Facility Bioassessment Report, Wet Season 2010.

- 1 Castelle, A.J., A.W. Johnson, and C. Conolly, 1994, Wetland and Stream Buffer Requirements – A
2 Review, in J. Environ. Qual., Vol. 23, September-October 1994, pp. 878-882.
- 3 Cates, James W.H., 1987., Wildlie Management and Phosphate Mined Lands, in Reclamation –
4 Mitigation – Management, Nethodologies, and and Topics for Mined Lands, Volume I (1987 – 1994),
5 Florida Department of Environmental Protection (FDEP), January 2005.
- 6 Cates, James W.H., 1992., A Regional Conceptual Plan for the Southern Phosphate District of Florida.
7 Florida Department of Environmental Protection (FDEP), July 20..
- 8 CF Industries, Inc., 2010a, South Pasture Extension Department of the Army Permit Application No.
9 SAJ-1993-01395. April.
- 10 CF Industries, Inc., 2010b, Hardee Phosphate Complex Environmental Resources Permit Application for
11 the South Pasture Mine Extension. Submitted to FDEP March 11, 2010.
- 12 CF Industries. 2011. CF Industries, Inc. – Hardee Phosphate Complex South Pasture Mine Extension
13 U.S. Army Corps of Engineers (ACOE) Dredge & Fill Application. September 16.
- 14 CF Industries, Inc., 2012a, South Pasture NPDES Groundwater Monitoring, Excel spreadsheet emailed
15 from Gary Blitch/CF Industries to Steve Gong/CH2M HILL, April 17.
- 16 CF Industries, Inc., 2012b, CF Industries Inc. (CF) Supplemental Information Submittal: Economic Factors
17 Associated with Mining, March 29.
- 18 Charlotte Harbor National Estuary Program (CHNEP), 2000, Committing to Our Future: A Comprehensive
19 Conservation and Management Plan for the Greater Charlotte Harbor Watershed, Volume 1, Fort Myers,
20 FL.
- 21 Charlotte Harbor National Estuary Program (CHNEP). 2005, Charlotte Harbor National Estuary Program.
22 Charlotte Harbor National Estuary Program online information. Charlotte Harbor National Estuary
23 Program, Fort Myers, FL. Available at <http://www.chnep.org>. Accessed August 2005.
- 24 Charlotte Harbor National Estuary Program (CHNEP), 2010, Charlotte Harbor Regional Climate Change
25 Vulnerability Assessment, February 19.
- 26 Conservation Trust, 2013, Conservation Trust for Florida: Our Mission, accessed via the internet at:
27 <http://www.landscape.org/florida/partners/ctf/>. Accessed March 2013.
- 28 Cordell, Dana, Jan-Olof Drangert, and Stuart White, 2009, The story of phosphorus: Global food security
29 and food for thought. Global Environmental Change, 19:292–305.
- 30 Council on Environmental Quality (CEQ), 1981, [Forty Most Asked Questions](#) Concerning CEQ's National
31 Environmental Policy Act Regulations, accessed August 2011 at
32 <http://ceq.hss.doe.gov/nepa/regs/40/40p1.htm> .
- 33 Council on Environmental Quality (CEQ), 1997, Considering Cumulative Effects Under the National
34 Environmental Policy Act, Executive Office of the President, January.
- 35 Council on Environmental Quality (CEQ), 2005, Guidance on the Consideration of Past Actions in
36 Cumulative Effects Analysis, Executive Office of the President, June 24.
- 37 Council on Environmental Quality (CEQ), 2010, Memorandum for Heads of Federal Departments and
38 Agencies, Subject: Draft NEPA Guidance on Consideration of the Effects of Climate Changes and
39 Greenhouse Gas Emissions, February 18.
- 40 Curtis, Michelle E., and Shirley R. Denton, 2011, Characterization of Forested Seepage Swamps of the
41 Mosaic Lands in the Bone Valley of West-Central Florida, prepared for Mosaic Fertilizer LLC, April.

- 1 Duerr, A.D., J.D. Hunn, B.R. Lewelling, and J.T. Trommer, 1988, Geohydrology and 1985 water
2 withdrawals of the aquifer systems in southwest Florida, with emphasis on the intermediate aquifer
3 system: U.S. Geological Survey Water-Resources Investigations Report 87-4259, 115 p.
- 4 Duerr, A.D., and G.M. Enos, 1991, Hydrology of the Intermediate Aquifer, Hardee and De Soto Counties,
5 Florida, U.S. Geological Survey Water-Resources Investigations Report 90-4104, prepared in cooperation
6 with the Southwest Florida Water Management District, Tallahassee, Florida.
- 7 Durbin, Douglas J., Shannon Gonzalez, Henry Mushinsky, Earl McCoy, Robin Moore, Neal Halstead, and
8 Kristin Robbins, 2008, Wildlife Habitat and Wildlife Utilization of Phosphate Mined Lands, December.
- 9 Eartheasy, 2012, Peak Phosphorus, accessed via the internet at [http://eartheasy.com/blog/2009/01/peak-](http://eartheasy.com/blog/2009/01/peak-phosphorus/)
10 [phosphorus/](http://eartheasy.com/blog/2009/01/peak-phosphorus/)
- 11 EcoNorthwest, 2008, A Net Economic Impact Analysis & Strategic Review for Hardee County, Florida,
12 Regarding the Mosaic Fertilizer, LLC Proposed Extension of the South Fort Meade Phosphate Mine,
13 February.
- 14 EcoNorthwest, 2011, The Net Economic Impacts of Phosphate Mining by Mosaic Fertilizer, LLC on Five
15 Central Florida Counties, 2011-2050. October 25.
- 16 Eldred, K.M., 1974, Assessment of Community Noise, Noise Control Engineering 3(2):88-95.
- 17 Entrix, 2009, Horse Creek Stewardship Program – 2007 Annual Report, November.
- 18 Entrix, 2010a, Horse Creek Stewardship Program – 2008 Annual Report. September.
- 19 Entrix. 2010b. Pine Level Tract Wildlife Survey Report, Desoto County, Florida, prepared for Mosaic
20 Fertilizer LLC, June 11.
- 21 Entrix, 2010c. Southeastern American Kestrel Survey, Wingate Extension and Wingate East, Hardee
22 County, FL, prepared for Mosaic Fertilizer LLC, April.
- 23 Entrix, 2010d, Mosaic Wingate Facility Bioassessment Report, Wet Season 2009.
- 24 Environmental Consulting & Technology, Inc. (ECT), 1998, 1997-1998 Wildlife Survey Results, Ona Site.
- 25 Environmental Consulting & Technology, Inc. (ECT), 2010a, Response to Sound Level Monitoring
26 Results at Wingate Creek Mine, as cited in Ona Mine Department of the Army Permit Application No.
27 SAJ-2011-01869 (Mosaic, 2011b).
- 28 Environmental Consulting & Technology, Inc. (ECT), 2010b, Response to Results of Sound Level
29 Monitoring, Four Corners Mine, Hillsborough County, Florida, as cited in Ona Mine Department of the
30 Army Permit Application No. SAJ-2011-01869 (Mosaic, 2011b).
- 31 Environmental Consulting & Technology, Inc. (ECT), 2010c, Wildlife Survey Results, Mosaic Ona-Fort
32 Green Site, Spring and Summer 2010. August.
- 33 Environmental Consulting & Technology, Inc. (ECT), 2011, Wildlife Survey Results, Mosaic Ona Site,
34 Spring 2011. May.
- 35 Environmental Simulations Inc. (ESI), 2007, Refinement of the District-Wide Regulation Model for
36 Southwest Florida Water Management District, January 11.
- 37 Environmental Simulations Inc. (ESI), 2011, Groundwater Vistas, Version 6, Computer Software.

- 1 Erwin, K.L., S.J. Doherty, M.T. Brown, and G.R. Best, eds., 1997, Evaluation of Constructed Wetlands on
2 Phosphate Mined Lands in Florida, November.
- 3 Evans, E., 2010, Peace River Integrated Modeling Project, Presentation by HydroGeoLogic Inc. to the
4 Peace River Basin Management Advisory Committee Meeting, Sarasota, Florida, June 4.
- 5 Fanning, K. A., J. A. Breland III, and R. H. Bryne, 1982, "Radium-226 and radon-222 in the coastal waters
6 of West Florida: High concentrations and atmospheric degassing," Science 215:667-670, February 5.
- 7 Federal Highway Administration (FHWA), 2006, Highway Traffic Noise Construction Noise Handbook,
8 Final Report, FHWA-HEP-06-015, DOT-VNTSC-FHWA-06-02, NTIS No. PB2006-109102, Chapter 9,
9 Construction Equipment Noise Levels and Ranges, August, accessed at
10 http://www.fhwa.dot.gov/environment/noise/construction_noise/handbook/handbook09.cfm.
- 11 Federal Highway Administration (FHWA), 2012, Noise Analysis and Abatement Guidance, accessed at
12 [http://www.fhwa.dot.gov/environment/noise/regulations_and_guidance/analysis_and_abatement_guidanc](http://www.fhwa.dot.gov/environment/noise/regulations_and_guidance/analysis_and_abatement_guidance/polguide01.cfm)
13 [e/polguide01.cfm](http://www.fhwa.dot.gov/environment/noise/regulations_and_guidance/analysis_and_abatement_guidance/polguide01.cfm).
- 14 Federal Register, 1995, Federal Guidance for the Establishment, Use and Operation of Mitigation Banks;
15 Notice, Department of Defense, Environmental Protection Agency, Department of Agriculture,
16 Department of the Interior, Department of Commerce, November 28. Volume 60, No. 228, pp. 58605 -
17 58614.
- 18 Federal Register. 1999. Executive Order 13112 of February 3, 1999, Invasive Species, Volume 64,
19 No. 25, Monday, February 8.
- 20 Federal Register, 2000a Rules and Regulations, Vol. 65, No. 47, March 9, 2000, pp. 12429-12442.
- 21 Federal Register, 2011, Notice of Intent to Prepare AEIS, U.S. Army Corps of Engineers, Volume 76(34),
22 No. 9560, February 18. Accessed via internet at [http://www.gpo.gov/fdsys/pkg/FR-2011-02-18/html/2011-](http://www.gpo.gov/fdsys/pkg/FR-2011-02-18/html/2011-3738.htm)
23 [3738.htm](http://www.gpo.gov/fdsys/pkg/FR-2011-02-18/html/2011-3738.htm). Accessed February 6, 2012.
- 24 Federal Register, 2012, Notice of Availability of Draft AEIS, U.S. Army Corps of Engineers, Volume 77,
25 No. 106, June 1.
- 26 Fernald, E. A., and E. D. Purdum, 1998a, Water Resources Atlas of Florida, Chapter 3, Groundwater,
27 pp. 45-54. Tallahassee: Institute of Science and Public Affairs, Florida State University.
- 28 Fernald, Edward A., and Elizabeth D. Purdum, 1998b, Water Resources Atlas of Florida, Chapter 2,
29 Climate, pp. 33-36. Institute of Science and Public Affairs, Florida State University, Tallahassee, Florida.
- 30 The Fertilizer Institute, 2008, Fertilizer's Role in World Food Production, June.
- 31 Fertilizer Markets, 2001, Complex web of Agrifos: Fertilizer Markets, v. 11, no. 41, May 11, p. 1-2. As
32 cited in: USGS Mineral Surveys for 2001.
- 33 Fischer, Richard A., and J. Craig Fischenich, 2000, Design Recommendations for Riparian Corridors and
34 Vegetated Buffer Strips, USACE Engineer Research and Development Center (ERDC) Environmental
35 Laboratory, Vicksburg, MS, ERDC TN-EMRRP-SR-24, April.
- 36 Florida Department of Agriculture and Consumer Services (FDACS), 2011, Florida Agriculture by the
37 Numbers, FDACS Publication DACS-P-01304.
- 38 Florida Department of Environmental Protection (FDEP), 2004, TMDL Report, Nutrient and Dissolved
39 Oxygen TMDL for Thirty Mile Creek, Polk County, Florida, WBID 1639, Division of Water Resource
40 Management, Bureau of Watershed Management, September 17.

- 1 Florida Department of Environmental Protection (FDEP), 2005, Water Quality Assessment Report, Tampa
2 Bay Tributaries, 584 p.
- 3 Florida Department of Environmental Protection (FDEP), 2006a, Water Quality Assessment Report,
4 Sarasota Bay and Peace and Myakka Rivers, 482 p.
- 5 Florida Department of Environmental Protection (FDEP), 2006b, Florida's Total Maximum Daily Load
6 (TMDL) Program: protecting and restoring water quality in the Peace River Basin, Available at:
7 <ftp://ftp.dep.state.fl.us/pub/water/mines/prcis/FloridaTMDLProgram.pdf>.
- 8 Florida Department of Environmental Protection (FDEP), 2006c, Basis of Review for Environmental
9 Resource Permit Applications within the Southwest Florida Water Management District, Adopted by
10 Reference In Chapter 62-330, F.A.C., for Use By FDEP, Final Effective August 2, 2006.
- 11 Florida Department of Environmental Protection (FDEP), 2007a, Peace River Basin Resource
12 Management Plan, March. http://www.dep.state.fl.us/water/mines/pr_rmp.htm. Accessed January 12,
13 2012.
- 14 Florida Department of Environmental Protection (FDEP), 2007b, Riparian Wetland Mitigation:
15 Development of Assessment Methods, Success Criteria and Mitigation Guidelines, Part I: Water Quality,
16 Habitat, and Macroinvertebrates of Reclaimed and Unmined Streams. Tallahassee, FL.
- 17 Florida Department of Environmental Protection (FDEP), 2007c, Mandatory Phosphate Mine Boundary
18 Data Set. Bureau of Mining and Minerals Regulation.
- 19 Florida Department of Environmental Protection (FDEP). 2008. Stream and River Habitat Assessment
20 Standard Operating Procedure 001/01 FT 3100.
- 21 Florida Department of Environmental Protection (FDEP), 2009, Biological and Water Quality Assessment
22 of the Peace River Basin.
- 23 Florida Department of Environmental Protection (FDEP). 2011a. Approval of Conceptual Reclamation
24 Plan CFI-SPE-CP, CF Industries, Inc. – South Pasture Extension Mine, File No. 0294666-002. November
25 21.
- 26 Florida Department of Environmental Protection (FDEP), 2011b, Florida Forever Lands, Accessed via
27 internet at: http://www.dep.state.fl.us/lands/FFAnnual/B_CharlotteHarborEstuary.pdf. Accessed June
28 2011.
- 29 Florida Department of Environmental Protection (FDEP), 2011c. Florida's Endangered and Threatened
30 Species. May.
- 31 Florida Department of Environmental Protection (FDEP), 2011d, 2010 Financial Responsibility Report for
32 the Phosphate Mines, December 16.
- 33 Florida Department of Environmental Protection (FDEP), 2011e, Chemical Data for 2009 – 2011,
34 available via internet from <http://www.dep.state.fl.us/water/drinkingwater/chemdata.htm>.
- 35 Florida Department of Environmental Protection (FDEP), 2011f, "Development and application of DEP
36 Bioassessment Methods, Streams, Stream Habitat Assessment."
37 <http://www.dep.state.fl.us/water/bioassess/methods.htm#StreamHabitat>, Last updated
38 September 21, 2011.
- 39 Florida Department of Environmental Protection (FDEP), 2011g, Reclaimed and Released Mining
40 Parcels. Presentation by Michelle Sims/Florida Department of Environmental Protection.

- 1 Florida Department of Environmental Protection (FDEP). 2012a. Environmental Resource Permit. Final.
2 Bureau of Mining and Minerals Regulation. Permit Number 0294666-001. South Pasture Extension Mine.
3 June 22.
- 4 Florida Department of Environmental Protection (FDEP), 2012b, "Mining, Mitigation and Delineation
5 Program," <http://www.dep.state.fl.us/water/mines/index.htm> Accessed on December 12, 2012.
- 6 Florida Department of Environmental Protection (FDEP), 2012c. Annual Rate of Reclamation Reports
7 2000-2010.
- 8 Florida Department of Environmental Protection (FDEP), 2012d. "Uniform Mitigation Assessment
9 Methodology (UMAM)." <http://www.dep.state.fl.us/water/wetlands/mitigation/umam.htm>. Last updated
10 July 26, 2012.
- 11 Florida Department of Environmental Protection (FDEP), 2012e, Mitigation Banks Permitted Under
12 373.4135, F.S. Accessed via internet on April 18 at
13 <http://www.dep.state.fl.us/water/wetlands/mitigation/mitbanks.htm>.
- 14 Florida Department of Environmental Protection (FDEP), 2012f, "What is the Environmental Resource
15 Permit Program (ERP)?" <http://www.dep.state.fl.us/water/wetlands/erp/index.htm>. Last updated
16 August 1, 2012.
- 17 Florida Department of Environmental Protection (FDEP), 2012g, Bureau of Mining and Minerals
18 Regulation: Mandatory Reclamation Financial Assurance Requirement MOA Contouring Not Complete,
19 for 2008, Updated December 13, 2012.
- 20 Florida Department of Environmental Protection (FDEP). 2013a, List of Phosphogypsum Stacks,
21 Communication from O. Rivera, February 6, 2013.
- 22 Florida Department of Environmental Protection (FDEP). 2013b. "Learn About Your Watershed, Alafia
23 River Watershed." http://www.protectingourwater.org/watersheds/map/tampa_bay_tributaries/alafia/.
24 Accessed on March 13, 2013.
- 25 Florida Department of Environmental Protection (FDEP). 2013c. "Impaired Water Lists."
26 <http://www.dep.state.fl.us/water/watersheds/assessment/vdlists.htm>. Accessed on January 3, 2013.
- 27 Florida Department of Environmental Protection (FDEP). 2013d. "Total Maximum Daily Loads Program."
28 <http://www.dep.state.fl.us/water/tmdl/index.htm>. Accessed on March 13, 2013.
- 29 Florida Department of Environmental Protection (FDEP). 2013e. "Geology Topics: Sinkholes,"
30 <http://www.dep.state.fl.us/geology/geologictopics/sinkhole.htm>. Accessed on March 13, 2013.
- 31 Florida Department of Transportation (FDOT), 1999, Florida Land Use Cover and Forms Classification
32 System Handbook, Third Edition, January.
- 33 Florida Geological Survey (FGS), 1994, Florida's geological history and geological resources, Special
34 publication No. 35. Accessed November 11, 2011, at <http://purl.fcla.edu/fcla/dl/UF00000124.pdf>.
- 35 Florida Geological Survey (FGS), 2008, Hydrogeological Framework of the Southwest Florida Water
36 Management District, Bulletin No. 68, by Jonathan D. Arthur, Cindy Fischler, Clint Kromhout, James M.
37 Clayton, G. Michael Kelley, Richard A. Lee, Li Li, Mike O'Sullivan, Richard C. Green, and Christopher L.
38 Werner, prepared in cooperation with the Southwest Florida Water Management District, pp 53, 62.
- 39 Florida Industrial and Phosphate Research (FIPR) Institute, 2011, Reclamation: Strategies and Stages,
40 <http://www1.fipr.state.fl.us/PhosphatePrimer/0/764E773481EAD02A85256F790058D446>. Accessed
41 December 5, 2011.

- 1 Florida Industrial and Phosphate Research (FIPR) Institute, 2012. Phosphate Primer. Accessed via
2 internet at <http://www1.fipr.state.fl.us/PhosphatePrimer/>. Accessed March 2012.
- 3 Florida Industrial and Phosphate Research (FIPR) Institute, 2013, Phosphate Mining and Mineral
4 Processing in Florida, accessed via the internet at: <http://www.fipr.state.fl.us/research-area-mining.htm>.
5 Accessed on January 12, 2013.
- 6 Florida Natural Areas Inventory (FNAI). 2013. FNAI Searchable Tracking List, Accessed via internet at
7 <http://www.fnai.org/trackinglist.cfm>. Accessed on February 2, 2013.
- 8 Florida Natural Areas Inventory (FNAI), University of Florida, and Florida Fish and Wildlife Conservation
9 Commission (FFWCC), 2011, Critical Lands and Waters Identification Project (CLIP_), Version 2.0 User
10 Tutorial, July.
- 11 Florida Phosphate Council, 2004, Phosphate Facts, as cited in FIPR's Phosphate Primer at:
12 <http://www1.fipr.state.fl.us/PhosphatePrimer/0/DE30A90BA33F588485256F80007C7BC3>. Accessed
13 November 11, 2011.
- 14 Florida Senate, 2012, Summary of Legislation Passed, Budget Subcommittee on Finance and Tax,
15 House Bill 7087, adopted by 2012 Legislature, Tallahassee, Florida.
- 16 Fuglie, K.O. and P.W. Heisey, 2007, Economic returns to public agricultural research. Economic Brief
17 #10, U.S. Department of Agriculture, Economic Research Service, 9 pages, September. Available at
18 <http://www.ers.usda.gov/Publications/EB10/>.
- 19 Gaines, Fred, Mike Cotter, and Carlos Frey, 2000, Bay Swamp Reclamation Techniques – Florida
20 Phosphate Mines, paper presented at the American Society for Surface Mining and Reclamation 17th
21 Annual Meeting, Tampa, Florida, June 11 – 15, pp 58-70.
- 22 Garlanger, John, 2002, Effects of Phosphate Mining and Other Land Uses on Peace River Flows,
23 Ardaman & Associates, Inc. Prepared for the Florida Phosphate Council, Tallahassee, FL, January 11.
- 24 Garlanger, John E., 2011, Potential Impacts of Phosphate Mining and Other Land Uses on Streamflow,
25 presented at the State of the Science on Phosphate Mining and the Environment, sponsored by the U.S.
26 Environmental Protection Agency, Punta Gorda, FL. March 28-29.
- 27 Gaske, Frederick P./Florida Department of State, Division of Historical Resources, Director and State
28 Historic Preservation Officer, 2008, Personal communication with Robert Austin, Ph.D./Southeastern
29 Archaeological Research, Inc. January 23, 2008.
- 30 GEOMET Technologies Inc. (GEOMET). 1987. Florida Statewide Radiation Study. Prepared by N.L.
31 Nagda, M.D. Koontz and W.A. Schoenborn for Prepared for the Florida Institute of Phosphate Research
32 (FIPR). Publication No. 05-029-057.
- 33 Geurink, Jeffrey S.; Mahmood Nachabe, Mark Ross, and Patrick Tara. 2001. Development of Interfacial
34 Boundary Conditions for the Southern District Ground Water Model of the Southwest Florida Water
35 Management District (Draft Final Report). Southwest Florida Water Management District. Brooksville,
36 Florida.
- 37 Gillis, Justin, 2011, A Warming Plant Struggles to Feed Itself, New York Times, June 5. Accessed via
38 internet at: http://www.nytimes.com/2011/06/05/science/earth/05harvest.html?_r=1&pagewanted=all :
39 Accessed August 8, 2012.
- 40 Global Trade Information Services (GTIS), 2012, Global Trade Atlas, U.S. Department of Commerce
41 Bureau of Census data, accessed via the internet at:
42 www.gtis.com/gta/secure/help/data_availability_source_valuation.htm. Accessed November 20, 2012.

- 1 GIW Industries, Inc., 2005, Centrifugal Slurry Pump Concentration Limit Testing and Evaluation, Phase I,
2 prepared under a grant sponsored by the Florida Institute of Phosphate Research, Publication
3 No. 04-069-215, September.
- 4 GIW Industries, Inc., 2009, Centrifugal Slurry Pump Concentration Limit Testing and Evaluation, Phase I,
5 prepared under a grant sponsored by the Florida Institute of Phosphate Research, Publication
6 No. 04-069-233, March.
- 7 GIW Testing Laboratory, 1989, Phosphate Matrix Pipeline Design Data and Tools for Efficiency
8 Improvement, prepared under a grant sponsored by the Florida Institute of Phosphate Research,
9 Publication No. 04-037-078, August.
- 10 Gordon F. Palm & Associates, Inc., 1984, *Priority Pollutants Water Data Acquisition Program: Sand*
11 *Tailings Water Quality, Phosphate Mines*, Volume 1 (July 24) and Volume 2 (August 3).
- 12 Grove Scientific & Engineering Company (Grove). 2002. Dose Potential from Consumption of Select
13 Radionuclides (Ra-226, Pb-210) and Metals (Cd, Hg, Pb) in Central Florida Phosphate Mineralized
14 Region Freshwater Fish Protein. Prepared by D. Morales, W.E. Bolch, Jr. and J. de la Cruz for the Florida
15 Institute of Phosphate Research (FIPR). Publication No. 05-060-190.
- 16 Guidry, J.J., W.E. Bolch, C.E. Roessler, J.T. McClave and J.K. Moon. 1986. Radioactivity in Foods Grown
17 in Florida Phosphate Lands. Prepared by Post, Buckley, Schuh & Jernigan, Inc. for the Florida Institute of
18 Phosphate Research (FIPR). Publication No. 05-015-038.
- 19 Guidry, J.J., W.E. Bolch, C.E. Roessler, J.T. McClave and J.K. Moon. 1990. Radioactivity in Foods Grown
20 on Mined Phosphate Lands. Prepared by Post, Buckley, Schuh & Jernigan, Inc. for the Florida Institute of
21 Phosphate Research (FIPR). Publication No. 05-028-088.
- 22 Guimond, R.J. and S.T. Windham, 1980, Radiological evaluation of Structures Constructed on Phosphate-
23 Related Land, in: Natural Radiation Environment III, Volume 2 – Proceedings of a Symposium held at
24 Houston, Texas, April 23-28, 1978.
- 25 Gurr, T.M., 2010, Phosphate Rock, Mining Engineering, June 2010, Pg. 67.
- 26 Hammett, K.M., 1990, Land use, water use, streamflow characteristics, and water quality characteristics
27 of the Charlotte Harbor inflow area, Florida, USGS Water Supply Paper 2359-A, 64 p.
- 28 Hancock, M., and Basso, R. 1993. Computer Model of Groundwater Flow in the Northern Tampa Bay,
29 Brooksville. Southwest Florida Water Management District, 120 p.
- 30 Harbaugh, A.W., E.R. Banta, M.C. Hill, and M.G. McDonald, 2000, MODFLOW-2000, The U.S.
31 Geological Survey Modular Ground-Water Model – User Guide to Modularization Concepts and the
32 Ground-Water Flow Process, USGS Open File Report 00-92.
- 33 Hazen and Sawyer, 2003, Economic Impact of the Ona Mine to Hardee County, Final Report, July 28.
34 http://protectpeaceriver.org/resources_old/Ona_Economic_Impact_Study-Final.pdf
- 35 HDR Engineering, Inc. (HDR). 2008. Final Integrated Regional Water Supply Master Plan. Prepared for
36 the Peace River Manasota Regional Water Supply Authority, Lakewood Ranch, FL. September 2008.
- 37 Hodges, M.F., and D.G. Krementz, 1996, "Neotropical migratory breeding bird communities in riparian
38 forests of different widths along the Altamaha River, Georgia," *Wilson Bulletin* 108,496-506.
- 39 Hodges, A.W., M. Rahmani and T.J. Stevens, 2011, Economic Contributions of Agriculture, Natural
40 Resources, and Related Industries in Florida in 2009, University of Florida/IFAS, Food & Resource
41 Economics Department, August, 19 pages, available at <http://edis.ifas.ufl.edu/fe897>.

- 1 HydroGeoLogic, Inc. 2002. Three-Dimensional Density-Dependent Flow and Transport Modeling of
2 Saltwater Intrusion in the Southern Water Use Caution Area. Report Prepared for Southwest Florida
3 Water Management District. June.
- 4 HydroGeoLogic, Inc. (HGL), 2012a, Peace River Integrated Modeling Project (PRIM) Final Report, Phase
5 V: Predictive Model Simulations, prepared for the Southwest Florida Water Management District, January.
- 6 HydroGeoLogic, Inc. (HGL), 2012b, Peace River Integrated Modeling Project (PRIM) Addendum Report
7 for Phase IV: Basin-Wide Model, prepared for the Southwest Florida Water Management District,
8 January.
- 9 HydroGeoLogic, Inc. (HGL). 2012c. Peace River Integrated Modeling Project (PRIM) Phase V: Predictive
10 Model Simulations. Prepared for the Southwest Florida Water Management District, Brooksville, FL.
11 January.
- 12 Interflow Engineering, LLC. (Interflow), 2008a, Myakka River Watershed Initiative, Water Budget Model
13 Development and Calibration, Final Report, Prepared in association with Singhofen and Associates, Inc.,
14 prepared for the Southwest Florida Water Management District, December 8, 2008. Available from:
15 <http://www.swfwmd.state.fl.us/projects/myakka/>.
- 16 Interflow Engineering, LLC. (Interflow), 2008b, Myakka River Watershed Initiative, Task 2.2.8 – Historical
17 and Future Conditions Modeling Technical Memorandum. Prepared for Singhofen and Associates, Inc.
18 Available from <http://www.swfwmd.state.fl.us/projects/myakka/>. Prepared for Singhofen and Associates
19 Inc., May 16, 2008. Available from: <http://www.swfwmd.state.fl.us/projects/myakka/>.
- 20 International Fertilizer Industry Association (IFA), 2006, Production and International Trade Statistics.
21 http://www.fertilizer.org/ifa/statistics/pit_public/pit_public_statistics.asp. (Accessible only by IFA members,
22 used as cited by Cordell et al., 2009).
- 23 International Fertilizer Industry Association (IFA), 2012a, Short-Term Prospects for World Agriculture and
24 Fertilizer Demand, 38th Annual IFA Enlarged Council Meeting, AgCom/12/51, A/12/168, Rome, Italy,
25 December.
- 26 International Fertilizer Industry Association (IFA), 2012b, Phosphate Rock Statistics, Production Tonne
27 Basis, A/12/119, PIT/2011/A/P/3, October.
- 28 Irwin, C.A., and C.B. Hutchinson, 1976, Reconnaissance Water Sampling for Radium-226 in Central and
29 Northern Florida, December 1974-March 1976, U.S. Geological Survey, Water Resources Investigations
30 76-103, prepared in cooperation with the Florida State Department of Environmental Regulation, October.
- 31 Janicki Environmental, Inc. (Janicki), 2007, Water Quality Data Analysis And Report For The Charlotte
32 Harbor National Estuary Program, July 27.
- 33 Janicki Environmental, Inc. (Janicki), 2010, Final Water Quality Target Refinement Project, Task 4:
34 Pollutant Loading Estimates Development. Interim Report 4, Prepared for Charlotte Harbor National
35 Estuary Program, June.
- 36 Janus Research, 1995a, Archaeological Investigations at Two Sites (8HR82 & 8HR87) on IMC/Agrico
37 Company's Fort Green Mine Southern Reserve, Hardee County, FL. January.
- 38 Janus Research, 1995b, Phase II Study of Site 8HR87 at Agrico Chemical Company's Proposed
39 Phosphate Mining Area, Hardee County, FL.
- 40 Janus Research, 1997, Assessments of Past Cultural Resource Surveys of the Pine Level and Ona
41 Mines in Hardee, Manatee, and Desoto Counties, Florida, St. Petersburg, Florida.

- 1 Janus Research, 1998, Cultural Resource Assessment of the IMC-Agrico Company's Four Corners Mine
2 DRI Amendment Areas in Manatee County, Florida, St. Petersburg, Florida.
- 3 Janus Research, 1999, Phase II Archaeological Testing at the Marinkovic-Rosorough Mound (8MA1013),
4 St. Petersburg, Florida. March.
- 5 Janus Research, 2000, Final Report, Ground Penetrating Radar Survey, IMC Agrico Ona Mine Site,
6 Hardee County, Florida, St. Petersburg, Florida.
- 7 Janus Research, 2001, A Cultural Resource Assessment Survey of the Special Phase I Historical and
8 Archaeological Survey for the Ona Mine Areas, Hardee County, Florida, St. Petersburg, Florida.
9 February.
- 10 Janus Research, 2003, Cultural Resource Assessment Survey of the South Fort Meade Mine, Hardee
11 County, Florida, St. Petersburg, Florida. August.
- 12 Janus Research, 2004a, Cultural Resource Assessment Survey of the Jaeb Property IMC Hopewell Mine
13 Site, Hillsborough County, Florida, St. Petersburg, Florida. November.
- 14 Janus Research , 2004b, A Cultural Resource Assessment Survey of the Lipman and Lipman Property,
15 Four Corners Mine Site, Manatee Co, FL
- 16 Janus Research, 2004c, Cultural Resource Assessment Survey Of The Gooch Property: IMC Hopewell
17 Mine Site, Hardee Co, FL November.
- 18 Janus Research, 2007, Cultural Resource Assessment Survey of the South Fort Meade Mine, Second
19 Addendum, Hardee County, Florida, St. Petersburg, Florida.
- 20 Janus Research, 2012, Additional Testing of Five Sites in the Desoto Mine.
- 21 Jones, Douglas S., and Anthony F. Randazzo, Eds., 1997, The Geology of Florida, University Press of
22 Florida, Gainesville, Florida, as cited by Bill Woolwine (undated) in History of Phosphate Industry in
23 Florida.
- 24 Kale, Herbert W, II, 1992, Two-Year Study of the Avifauna of Reclaimed and Unreclaimed Mined Lands of
25 IMC Fertilizer Inc., Polk County, Florida, August.
- 26 Kammerer, Laura A./Florida Department of State, Division of Historical Resources, Deputy State Historic
27 Preservation Officer for Review and Compliance, 2012, Personal communication with Jacksonville
28 USACE. June 14, 2012.
- 29 Karl, Thomas R., Jerry M. Melillo, and Thomas C. Peterson (eds.), 2009, Global Climate Change Impacts
30 in the United States, Cambridge University Press. Available from:
31 <http://www.globalchange.gov/publications/reports/scientific-assessments/us-impacts>
- 32 Kaufman, R.F. and J.D. Bliss. 1977. Effects of the Phosphate Industry on Radium-226 in Ground Water of
33 Central Florida. Prepared by the United States Environmental Protection Agency, Office of Radiation
34 Programs, Las Vegas Facility. October.
- 35 Kelly, Martin, 2004, Florida River Flow Patterns and the Atlantic Multidecadal Oscillation, Ecologic
36 Evaluation Section, Southwest Florida Water Management District, August.
- 37 Kennedy, H.,1990, Feeding the world: Phosphate rock In: Minerals, U.S. Department of Interior, Bureau
38 of Mines, September 1990, 6-10, as cited in Draft Environmental Impact Statement for the PCS
39 Phosphate Mine Continuation in Aurora, North Carolina, 2006. At
40 http://www.saw.usace.army.mil/wetlands/Projects/PCS/DEIS/PCS%20DEIS%20Report/PCS%20DEIS%20TEXT/DEIS_PUBLIC%20101206.pdf. Accessed on October 20, 2011
41

- 1 Khare, Yogesh P., Christopher J. Martinez, and Gurpal S. Toor, 2012, Water Quality and Land Use
2 Changes in the Alafia and Hillsborough River Watersheds, Florida, USA, in Journal of the American
3 Water Resources Association, Vol. 48, No. 6, Pp. 1276 1293, December.
- 4 Kiefer, J.H., 1991, Chemical Functions and Water Quality in Marshes Reclaimed on Phosphate Mined
5 Lands in Central Florida, M.E. Thesis, University of Florida, available for review at the University of
6 Florida Science Library, Gainesville, Florida.
- 7 Kiefer, J.H., 2010, Hydrobiogeomorphology of Fluvial Systems in Peninsular Florida: Implications to
8 Classification, Conservation, and Restoration, Ph.D. Dissertation, University of Florida.
- 9 Kiefer, John H., 2011a, Key Advances in the Conceptualization and Design of Phosphate Mine
10 Reclamation Since 1975, Submitted to the U.S. Army Corps of Engineers on April 25, 2011.
- 11 Kiefer, John H., 2011b, Stream Reclamation: Scientific Approaches for Ecosystem Benefits at Florida
12 Phosphate Mines. Submitted to the U.S. Army Corps of Engineers on April 25, 2011.
- 13 Kilgo, J.C., R.A. Sargent, B.R. Chapman, and K.V. Miller, 1998, "Effect of stand width and adjacent
14 habitat on breeding bird communities in bottomland hardwoods," Journal of Wildlife Management 62,
15 pp 72-83. http://www.srs.fs.usda.gov/pubs/ja/ja_kilgo004.pdf.
- 16 Kleinfelder Southeast, Inc., 2012, Four Corners Mine 12th Annual Quantitative Monitoring Report,
17 August 2011, IMC-FCL-AC (5), Mining Unit 10, Wetland B, FDEP Permit #0155875-002 (Pacts #744),
18 Hillsborough County, Florida, prepared for Mosaic Fertilizer LLC, submitted to Florida Department Of
19 Environmental Protection.
- 20 Knochenmus, L.A. 2006. Regional Evaluation of the Hydrogeologic Framework, Hydraulic Properties, and
21 Chemical Characteristics of the Intermediate Aquifer System Underlying Southern West-Central Florida.
22 US Geological Survey Scientific Investigations Report 2006-5013. US Government Printing Office,
23 Washington, DC.
- 24 Lee, T.M., L.A. Sacks, and J.D. Hughes, 2010, Effect of Groundwater Levels and Headwater Wetlands on
25 Streamflow in the Charlie Creek Basin, Peace River Watershed, West-Central Florida, U.S. Geological
26 Survey Scientific Investigations Report 2010-5189, prepared in cooperation with the Southwest Florida
27 Water Management District.
- 28 Lewelling, B.R., 1997, Hydrologic and Water Quality Conditions in the Horse Creek Basin, October 1992–
29 February 1995, USGS Water-Resources Investigations Report 97-4077, prepared in cooperation with the
30 Southwest Florida Water Management District, Tallahassee, Florida.
- 31 Lewelling, B.R., A.A. Tihanski, and J.L. Kindinger, 1998, Assessment of the Hydraulic Connection
32 Between Ground Water and the Peace River, West-Central Florida, USGS Water-Resources
33 Investigations Report 97-4211, prepared in cooperation with the Southwest Florida Water Management
34 District, Tallahassee, Florida.
- 35 Lewelling, B.R., and R.W. Wylie, 1993, Hydrology and Water Quality of Unmined and Reclaimed Basins
36 in Phosphate-Mining Areas, West-Central Florida, U.S. Geological Survey, Water-Resources
37 Investigations Report 93-4002, prepared in cooperation with the Florida Institute of Phosphate Research,
38 Tallahassee, Florida.
- 39 Lifton, Jack, 2011, Feeding The World's Hunger for Phosphorus, June 3, accessed via internet at:
40 <http://www.resourceinvestor.com/2011/06/03/feeding-the-worlds-hunger-for-phosphorus>: Last accessed
41 August 25, 2011.
- 42 Long, Harold, and David Orne, 1990, Regional Study Of Land Use Planning And Reclamation, Final
43 Report, Central Florida Regional Planning Council, Prepared for The Florida Institute Of Phosphate
44 Research. August.

- 1 Lugar, Richard G., and Dr. Norman Borlaug, 2010, Solutions to Closing the Gap, Pre-publication draft,
2 Global Harvest Initiative, March 16..
- 3 Lynch, Tim, 2000, Analyzing the Economic Impact of Transportation Projects Using RIMS II, IMPLAN,
4 and REMI, Florida State University, Institute for Science and Public Affairs, Center for Economic
5 Forecasting and Analysis. Prepared for, Office of Research and Special Programs, U.S. Department of
6 Transportation, Washington, D.C., October.
- 7 Maddox, Gary L., Jacqueline M. Lloyd, Thomas M. Scott, Sam B. Upchurch, and Rick Copeland, eds.,
8 1992, Florida's Ground Water Quality Monitoring Program Background Hydrogeochemistry, Florida
9 Geological Survey Special Publication No. 34. <http://www.dep.state.fl.us/water/monitoring/sp34.htm>.
10 Accessed January 6, 2012.
- 11 ManaSota-88, 2008, "Clay Settling Areas," <http://www.thephosphaterisk.com/issues/clay-settling-areas>.
12 Copyright 2008.
- 13 Manatee County, 2004, Manatee County Ordinance Number 04-39.
- 14 Martin and Associates, 2006, The Local and Regional Economic Impacts of the Tampa Port Authority,
15 The Tampa Port Authority, July 28.
- 16 McCuen, Tavia/ Former Southeastern Director of The Nature Conservancy, 2012, Personal
17 communication with Tom Simpson/CH2M HILL, January.
- 18 Metcalf & Eddy/AECOM, 2007, Phosphate Mine Reagent Impact Study Report, Submitted to Florida
19 Department of Environmental Protection, Site Investigation Section, May.
- 20 Metz, P.A., and B.R. Lewelling, 2009, Hydrologic Conditions that Influence Streamflow Losses in a Karst
21 Region of the Upper Peace River, Polk County, Florida, USGS Scientific Investigations Report 2009-
22 5140, Prepared in cooperation with the Southwest Florida Water Management District, 82 pp.
- 23 Metz, P.A., and Matthew Cimifile, 2010, "Peace River in Florida Loses as Much as 11 Million Gallons a
24 Day to Sinkholes and is Vulnerable to Running Dry," Sound Waves, U.S. Geological Survey Monthly
25 Newsletter, Accessed via internet at <http://soundwaves.usgs.gov/2010/02/research.html>, February 2010.
- 26 Minnesota IMPLAN Group, Inc. (MIG, Inc.), 2012, Impact Analysis for Planning (IMPLAN) Software,
27 accessed via Internet at www.implan.com, May 2012.
- 28 Milanich, Jerald, 1975, Archaeological and Historical Resources of the Carlton Ranch, Limestone and
29 Oliff Properties, Hardee County, Florida.
- 30 Montalbano, F., III, J.E. Thul and W.E. Bolch. 1983. Radium-226 and Trace Elements in Mottled Ducks.
31 The Journal of Wildlife Management, 47(2): 327-333.
- 32 Montes-Rojas, G., S. T. McGuire, S. Ivey, and T. Durrenberger, 2007, The Florida housing Boom, Florida
33 Focus, Vol. 3, University of Florida, Bureau of Economic and Business Research, 16 pp. (Available online
34 at http://www.bebr.ufl.edu/sites/default/files/FloridaFocus3_2_2007_0.pdf.)
- 35 Moody, Andrew J.; Dennis G. Colie; and Joseph S. DeSalvo, Tampa Port Authority; Business Research &
36 Economic Advisors; and University of South Florida. Center for Economic Development Research, 2002,
37 "The contribution of the Port of Tampa to the Tampa Bay and Florida economies in 2001, prepared for
38 Tampa Port Authority." College of Business Publications, University of South Florida. Paper 75.
39 http://scholarcommons.usf.edu/business_pub/75.
- 40 Moreno-Mateos, David, M.E. Power, F.A. Comín, and R. Yockteng, 2012, Structural and Functional Loss
41 in Restored Wetland Ecosystems, PLoS Biol vol 10, issue 1: e1001247.doi:10.1371/journal.pbio.1001247,
42 (1-8).

- 1 Mosaic Fertilizer, LLC (Mosaic), 2007, FFWCC Gopher Tortoise Relocation Permit WR07393.
- 2 Mosaic Fertilizer, LLC (Mosaic), 2010, Ninth Annual Florida Scrub-Jay Habitat Management Plan Report.
3 Lonesome & Four Corners Mines. USFWS Biological Opinion for Service Log No. 00-171a. November.
- 4 Mosaic Fertilizer, LLC (Mosaic), 2011a, Desoto Mine Department of the Army Permit Application No.
5 SAJ-1997-04752, June.
- 6 Mosaic Fertilizer, LLC (Mosaic), 2011b, Ona Mine Department of the Army Permit Application No.
7 SAJ-2011-01869, June.
- 8 Mosaic Fertilizer, LLC (Mosaic), 2011c, Wingate East Department of the Army Permit Application
9 No.SAJ-2009-03221, June.
- 10 Mosaic Fertilizer, LLC (Mosaic), 2011d, Discharge Monitoring Report data provided to CH2M HILL
11 August.
- 12 Mosaic Fertilizer, LLC (Mosaic). 2011e. Ona Mine U S Army Corps of Engineers 404 Application. File No.
13 SAJ-2011-01869 Supporting Documentation. Submitted to USACE in June 2011.
- 14 Mosaic Fertilizer, LLC (Mosaic). 2011f. Desoto Mine U S Army Corps of Engineers 404 Application. File
15 No. SAJ-2011-04272 Supporting Documentation. Submitted to USACE in June 2011.
- 16 Mosaic Fertilizer, LLC (Mosaic). 2011g. Wingate East Mine US Army Corps of Engineers 404 Application.
17 File No. SAJ-2011-03221 Supporting Documentation. Submitted to USACE in June 2011.
- 18 Mosaic Fertilizer, LLC (Mosaic), 2012, Mosaic Reclaiming the land for future generations, Accessed via
19 internet at http://mosaicfla.com/media/7812/mos-0242_reclamation_brochure_final.pdf.
- 20 Mote Marine Laboratory, 2005, Molluscan Bio-Indicators of the Tidal Myakka River and Inshore Waters of
21 Venice Florida, June 20.
- 22 Mote Marine Laboratory, 2007, Benthic Invertebrate Species Richness and Diversity at Different Habitats
23 in the Greater Charlotte Harbor System, March.
- 24 Mulberry Phosphate Museum, 2012. Florida Phosphate Mining, Phosphate Through The Years.
25 <http://mulberryphosphatemuseum.org/history.html>, accessed March 2012.
- 26 Mumme, R.L., and T.H. Below, 1995, Relocation as a Management Technique for the Threatened Florida
27 Scrub Jay. Annual Project Report, Florida Game and Fresh Water Fish Commission, December. On file at
28 the U.S. Fish and Wildlife Service, South Florida Ecosystem Office; Vero Beach, Florida.
- 29 Mushinsky, Henry R., Earl D. McCoy, and Robert A. Kluson, 1996, Habitat Factors Influencing the
30 Distribution of Small Vertebrates on Unmined and Phosphate-Mined Uplands in Central Florida,
31 November.
- 32 Mushinsky, Henry R., Earl D. McCoy, and Robert A. Kluson, 2001, Habitat Factors Influencing the
33 Distribution of Small Vertebrates on Unmined and Phosphate-Mined Flatlands in Central Florida, August.
- 34 Myers, O.B., W.R. Marion, T.E. O'Meara and C.E. Roessler. 1989. Radium-226 in Wetland Birds from
35 Florida Phosphate Mines. J. Wildl. Manage. 53(4): 1110-1116.
- 36 National Council on Radiation Protection & Measurement (NCRP), 2009, Ionizing Radiation Exposure of
37 the Population of the United States, Report No. 160, Bethesda, Maryland, March 3.
- 38 National Mitigation Banking Association, 2012a, Mitigation Banks. Accessed via internet at
39 <http://www.mitigationbanking.org/mitigationbanks/index.html#florida>. Accessed January 23.

- 1 National Mitigation Banking Association, 2012b, Boran Ranch Mitigation Bank Factsheet. Accessed via
2 internet at <http://www.mitigationbanking.org/mitigationbanks/index.html#florida>. Accessed January 23.
- 3 National Mitigation Banking Association, 2012c, Peace River Mitigation Bank Factsheet. Accessed via
4 internet at <http://www.mitigationbanking.org/mitigationbanks/index.html#florida>. Accessed January 23.
- 5 National Mitigation Banking Association, 2012d, Myakka Mitigation Bank Factsheet, Accessed via internet
6 at <http://www.mitigationbanking.org/mitigationbanks/index.html#florida>. Accessed January 26.
- 7 National Park Service, 2012, National Register of Historic Places, accessed March 2012 via the internet
8 at <http://www.nps.gov/nr/>.
- 9 National Council on Radiation Protection and Measurement (NRC), 2009, Ionizing Radiation Exposure
10 of the Population of the United States: Recommendations of the National Council on Radiation Protection
11 and Measurement, NRC Report No. 160, March 3.
- 12 Natural Resource Conservation Service (NRCS), 2000-2010, Soil Types by Hydrologic Groups.
- 13 Natural Resources Conservation Service (NRCS), 2007, National Engineering Handbook: Part 654 –
14 Stream Restoration Design.
- 15 Natural Resources Conservation Service (NRCS), 2011, “Riparian Forest Buffer Design Procedures,” NE-
16 T.G. Notice 630, Section IV, <http://efotg.sc.egov.usda.gov/references/public/NE/NE391DP.pdf>. July.
- 17 Natural Resources Conservation Service (NRCS), 2012, Animal Enhancement Activity – ANM33-
18 Riparian buffer, terrestrial and aquatic wildlife habitat, U.S. Department of Agriculture, July 9.
- 19 Natural Resources Conservation Service (NRCS). 2013. Hydrologic Unit Map digital data, Watershed
20 Boundary Dataset Lines for HUC2-12. http://datagateway.nrcs.usda.gov/GDGHome_StatusMaps.aspx.
21 Last accessed March 8, 2013
- 22 North Port, City of, 2011, “Location of the Pine Level/Keys Tract within the Big Slough Watershed.”
- 23 Nyiri, Ken, 2011, Why we need to Mine Phosphate Rock in the United States, CRU Fertilizer Group,
24 April 11.
- 25 Ohio Department of Transportation (ODOT), 2013, Summary of Noise Mitigation Options and
26 Recommendations, accessed via the internet at:
27 [http://www.strongsville.org/content/documents/ODOT_Ch_6_Summary_of_Noise_Mitigation_Options_and](http://www.strongsville.org/content/documents/ODOT_Ch_6_Summary_of_Noise_Mitigation_Options_and_Recommendations.pdf)
28 [Recommendations.pdf](http://www.strongsville.org/content/documents/ODOT_Ch_6_Summary_of_Noise_Mitigation_Options_and_Recommendations.pdf) , last accessed February 21, 2013.
- 29 Gordon F. Palm and Associates, Inc., 1984, Priority Pollutants Water Data Acquisition Program, Sand
30 Tailings Water Quality, Phosphate Mines, Volume 1, 1984, PN-6090, July 24. .
- 31 PanAmerican Consultants, 2005, An Archaeological and Historical Survey of the Mosaic 9 Parcels DRI
32 Project Area in Hillsborough County, FL.
- 33 Panamerican Consultants, Inc., 2006, Addendum to the Archaeological and Historical Survey of the
34 Mosaic 9 Parcels DRI Project Area in Hillsborough County, Florida: An Archaeological and Historical
35 Survey of Mosaic Parcel 4b, January 2006.
- 36 PanAmerican Consultants, Inc., 2008a, An Archaeological and Historical Survey of the G&D Farms
37 Project Area in Manatee Co, FL,
- 38 PanAmerican Consultants, Inc., 2008b, Archaeological Testing at the Pizo 1113 Site 98MA125) in
39 Manatee County. December.

- 1 PBS&J, 2007, Final Report for the Peace River Cumulative Impact Study, Prepared for Florida
2 Department of Environmental Protection Bureau of Mine Reclamation and the Southwest Florida Water
3 Management District, January. Accessed via:
4 <ftp://ftp.dep.state.fl.us/pub/minerec/peaceriver/FinalPeaceRiverCumulativeImpactStudy/FinalPeaceRiverCISReport/PeaceRiverCISReport.pdf>. Accessed January 21, 2012.
5
- 6 PBS&J, 2010, 2009 HBMP Annual Data Report, prepared for the Peace River Manasota Regional Water
7 Supply Authority, May.
- 8 Peace River Manasota Regional Water Supply Authority (PRMRWSA), 2006, Integrated Regional Water
9 Supply Master Plan, December.
- 10 Peace River Manasota Regional Water Supply Authority (PRMRWSA), 2011, Water Use Permit
11 No, 2010420.006, as modified April 26, 2011, on file with the Southwest Florida Water Management
12 District, Brooksville, Florida.
- 13 Ping, W.V., C. Shih, and Karen Somerder, 1996, Noise and Ground Vibration Monitoring Related to
14 Dragline Operations in Phosphate Mining, Final Report, Florida Institute of Phosphate Research (FIPR)
15 Publication Number 92-05-039, Florida A&M University/Florida State University College of Engineering,
16 Tallahassee, Florida.
- 17 Piper Archaeological Research, 1981, Archaeological Testing and Evaluation of Seven Sites Located on
18 AMAX Properties in Manatee and Desoto Counties, Florida.
- 19 Piper Archaeological Research, 1982, Limited Excavations at 8HR5 and Archaeological Sites Located on
20 Mississippi Chemical Corporation Property in Hardee County, Florida.
- 21 Piper Archaeological Research, 1990a, Test Excavations at the Little Payne Mining Tract Site (8PO207).
22 Located on the Gardinier Fort Meade Mine Extension, Polk Co, FL.
- 23 Piper Archaeological Research, 1990b, Cultural Resource Assessment Survey of IMC Fertilizer IMC
24 Extension.
- 25 Piper Archaeological Research, 1991, Cultural Resources Assessment Survey of the IMC-Fertilizer Four
26 Corners Mine Substantial Deviations DRI Number 198 Project Area, Manatee Co, FL
- 27 Piper Archaeological Research/Janus Research, 1992, Cultural Resource Assessment of Five Additional
28 Parcels to be Added to the IMC Fertilizer, Inc. Hillsborough County Mine DRI #213, Hillsborough County,
29 Florida, St. Petersburg, Florida. February.
- 30 Price, P.N., A. Nero, K. Revzan, M. Apte, A. Gielman, and W. Boscardin. 2007. High-Radon Homepage.
31 Lawrence Berkeley National Laboratory, Berkeley, CA. <http://eetd.lbl.gov/IEP/high-radon> (accessed
32 March 2012).
- 33 Progressive Water Resources (PWR), 2011, Hydrogeologic Setting and Groundwater Flow Model
34 Analysis in Support of the Application for Renewal of WUP 20011400.24. Prepared for Mosaic Fertilizer,
35 LLC.
- 36 Quest Ecology. 2006. Listed Species Survey of CF Industries Proposed South Pasture Mine Extension.
37 October.
- 38 Rail-Veyor Technology, Inc., 2002, Rail-Veyor Bulk Material Transport System, prepared under a grant
39 sponsored by the Florida Institute of Phosphate Research, Publication No. 01-152-147, May..
- 40 Rayonier, Paul Rice, 2012, Personal communication with Tom Simpson/CH2M HILL, January.

- 1 Regional Economic Models, Inc. (REMI), undated, what does REMI say? Brochure.
2 <http://www.remi.com/the-remi-model>.
- 3 Reigner, W.R. and C. Winkler, III. 2001. Reclaimed Phosphate Clay Settling Area Investigation:
4 Hydrologic Model Calibration and Ultimate Clay Elevation Prediction, Final Report. Prepared for the
5 Florida Institute of Phosphate Research, Bartow, FL. Publication No. 03-109-176. August 2001.
- 6 Richards, J./USEPA; 2012, Personal Communication with Steve Gong/CH2M HILL.
- 7 Roessler, C.E., R. Kautz, W.E. Bloch, Jr. and J.A. Wethington, Jr. 1980. The effect of Mining and Land
8 Reclamation on the Radiological Characteristics of the Terrestrial Environment of Florida's Phosphate
9 Regions In: Natural Radiation Environment III, Volume 2 – Proceedings of a Symposium held at
10 Houston, Texas, April 23-28, 1978.
- 11 Rosgen, D.R., 1996, Applied River Morphology. Wildlife Hydrology, Pagosa Springs, CO.
- 12 Schreuder, Inc. (Schreuder), 2006, Impacts of Phosphate Mining of Streamflow, Prepared for the Florida
13 Institute of Phosphate Research, Bartow, FL. Publication 03-145-220, May.
- 14 Scott, Thomas, and James Cathcart, 1989, Florida Phosphate Deposits, Field Trip Guidebook T178.
15 June 30-July 7, 1989.
- 16 SDI Environmental Services, Inc. 2003. Cumulative Risk of Decreasing Streamflows in the Peace River
17 Basin. Prepared for Charlotte County, Lee County, and the Peace River Water Supply Authority.
18 December 18.
- 19 SDI Environmental Services (SDI), 2004, Assessment of Mining Impacts and Reclamation, performed for
20 Charlotte County and the Peace River Manasota Regional Water Supply Authority.
- 21 Semlitsch, R.D., and J.R. Bodie. 2003. Biological criteria for buffer zones around wetlands and riparian
22 habitats for amphibians and reptiles. Conservation Biology 17:1219-1228, October.
- 23 Semlitsch, R.D., and J. Jensen, 2001, Core habitat, not buffer zone, National Wetlands Newsletter 23:5-6,
24 Environmental Law Institute, Washington, D.C.
- 25 SENES Consultants Limited. 2011. White Paper: Potential Radiological Issues Associated with
26 Phosphate Mining. Prepared for: The Mosaic Company, May.
- 27 Sepúlveda, Nicasio, 2002, Simulation of Ground-Water Flow in the Intermediate and Floridan Aquifer
28 Systems in Peninsular Florida. U.S. Geological Survey Water-Resources Investigations Report 02-4009.
- 29 Silvanima, J., P. Hansard, and D. Ouellette, 1999, Florida Ground Water Quality Monitoring Network
30 Summary 1994-1997, Florida Department of Environmental Protection, Tallahassee, Florida, accessed
31 via the internet at <http://waterwebprod.dep.state.fl.us/ambient/triennial/default.htm>. Last accessed
32 March 7, 2013.
- 33 Small, C.R., and L.A. Macdonald, 2001, Reproduction and Growth in Relocated and Resident Gopher
34 Tortoises (*Gopherus polyphemus*) on Reclaimed Phosphate-Mined Lands, Prepared for the Florida
35 Institute of Phosphate Research, April.
- 36 Smith, R.D., A. Ammann, C. Bartoldus, and M.M. Brinson, 1995, An Approach for Assessing Wetland
37 Functions Using Hydrogeomorphic Classification, Reference Wetlands, and Functional Indices. WRP-DE-
38 9. USACE Waterways Experiment Station, October.
- 39 Soil Association, 2011, Coping without phosphate rock, by Rob Haward, February 10, 2011, accessed via
40 the internet at [http://www.soilassociation.org/blogs/soilassociationconference/article/109/coping-without-](http://www.soilassociation.org/blogs/soilassociationconference/article/109/coping-without-rock-phosphate)
41 [rock-phosphate](http://www.soilassociation.org/blogs/soilassociationconference/article/109/coping-without-rock-phosphate) As accessed in August 2012.

- 1 SouthArc Inc., 1998, Phase II Investigations of 8HI3792 and 8HI3797, Hillsborough Co, FL
- 2 South Florida Water Management District (SFWMD), 1998, IMC-AGRICO Company Wetland Rapid
3 Assessment Procedure (IMC-WRAP), Technical Publication REG-001, Rev.3,
4 http://www.phosphateaeis.org/pdfs/applications/ona/appendices/Appendix_A2_A3_A4.pdf, October.
- 5 Southeastern Archaeological Research, Inc., 1999a, A Cultural Resource Assessment Survey of IMC-
6 Agrico Company's Pine Level Mine Amendment DRI, DeSoto Co, FL
- 7 Southeastern Archaeological Research, Inc., 1999b, A Cultural Resource Assessment Survey of IMC-
8 Agrico Company's ONA Mine DRI, Hardee Co, FL
- 9 Southeastern Archaeological Research, Inc., 1999c, Four Cultural Resource Assessment Surveys of
10 IMC-Agrico Company's Ona Mine, Hardee Co, FL
- 11 Southeastern Archaeological Research, Inc., 1999d, A Cultural Resource Assessment Survey of CF
12 Industries, Inc's South Pasture Mine Extension DRI, Hardee Co, FL
- 13 Southeastern Archaeological Research, Inc., 1999e, A Cultural Resource Assessment Survey of Two
14 Additions to IMC-Agrico Co's Ona Mine DRI, Hardee Co, FL
- 15 Southeastern Archaeological Research, Inc., 2000, A Cultural Resource Assessment Survey of Six
16 Additions to IMC-Agrico Company's Ona Mine DRI, Hardee Co, FL
- 17 Southeastern Archaeological Research, Inc., 2002, A Cultural Resource Assessment Survey of the
18 Moody and Badcock Properties, Manatee Co, FL
- 19 Southeastern Archaeological Research, Inc., 2003, A Cultural Resource Assessment Survey of CF
20 Industries, Inc.'s South Pasture Mine Extension DRI, Hardee Co, FL
- 21 Southeastern Archaeological Research, Inc., 2007a, A Cultural Resource Assessment Survey of the
22 Texaco Tract for the Wingate Corridor Project, Manatee Co, FL
- 23 Southeastern Archaeological Research, Inc., 2007a, A Cultural Resource Assessment Survey of the
24 Texaco Tract, Manatee Co, FL
- 25 Southwest Florida Water Management District (SWFWMD), 1993, Eastern Tampa Bay Water Resource
26 Assessment Project, March.
- 27 Southwest Florida Water Management District (SWFWMD), 2001a, Watershed Management Plan,
28 April 26.
- 29 Southwest Florida Water Management District (SWFWMD), 2001b, Draft Peace River Comprehensive
30 Watershed Management Plan, Volumes I and II, Brooksville, FL.
- 31 Southwest Florida Water Management District (SWFWMD), 2001c, Regional Water Supply Plan, August.
- 32 Southwest Florida Water Management District (SWFWMD), 2002a, Little Manatee River Comprehensive
33 Watershed Management Plan, June.
- 34 Southwest Florida Water Management District (SWFWMD), 2002b, Saltwater Intrusion and the Minimum
35 Aquifer Level in the Southern Water Use Caution Area, Draft Report, August 21.
- 36 Southwest Florida Water Management District (SWFWMD), 2004a, Myakka River Comprehensive
37 Watershed Management Plan, September.

- 1 Southwest Florida Water Management District (SWFWMD), 2004b, Background Information on the Peace
2 River Basin, Resource Conservation and Development Department, August.
- 3 Southwest Florida Water Management District (SWFWMD), 2005a, Alafia River Minimum Flows and
4 Levels; Freshwater Segment, Brooksville, FL, November.
- 5 Southwest Florida Water Management District (SWFWMD), 2005b, Proposed Minimum Flows and Levels
6 for the Upper Segment of the Myakka River, from Myakka City to SR 72, Brooksville, FL, November.
- 7 Southwest Florida Water Management District (SWFWMD), 2006a, Regional Water Supply Plan,
8 December 1. <http://www.swfwmd.state.fl.us/documents/plans/RWSP/previous/rwsp.pdf>
- 9 Southwest Florida Water Management District (SWFWMD), 2006b, Southern Water Use Caution Area
10 Recovery Strategy, Final Report.
- 11 Southwest Florida Water Management District (SWFWMD), 2009a, Florida Land Use Cover Classification
12 System (FLUCCS).
- 13 Southwest Florida Water Management District (SWFWMD), 2009b, Aquifer Characteristics within the
14 Southwest Florida Water Management District, Report 99-1, Fifth Edition.
- 15 Southwest Florida Water Management District (SWFWMD), 2010a, Southwest Florida Water
16 Management District Regional Water Supply Plan. Brooksville, FL. July 2010.
- 17 Southwest Florida Water Management District (SWFWMD), 2010b, The Determination of Minimum Flows
18 for the Lower Myakka River, Brooksville, FL, August.
- 19 Southwest Florida Water Management District (SWFWMD). 2010c. Proposed Minimum Flows for the
20 Lower Myakka River. Brooksville, FL. April 2010.
- 21 Southwest Florida Water Management District (SWFWMD), 2011a, The Hydrology and Water Quality of
22 Select Springs in the Southwest Florida Water Management District, Originally published March 2001,
23 revised March 2011. Brooksville, FL.
- 24 Southwest Florida Water Management District (SWFWMD), 2011b, “2009 Estimated Water Use in the
25 Southwest Florida Water Management District, June.
- 26 Southwest Florida Water Management District (SWFWMD), 2011c, The 2010 Update of the Regional
27 Water Supply Plan, Tampa Bay Planning Region, January.
- 28 Southwest Florida Water Management District (SWFWMD), 2012a, Southwest Florida Water
29 Management District Board Approved Fiscal Year 2013 (October 2012 – September 2013) Minimum
30 Flows and Levels Priority List and Schedule, October 30, accessed via internet at
31 [Http://www.Swfwmd.State.Fl.Us/Projects/Mfl/Mfl Reports.Php](http://www.swfwmd.state.fl.us/projects/mfl/mfl_reports.php). Last Accessed March 3, 2013.
- 32 Southwest Florida Water Management District (SWFWMD), 2012b, Summary of Rainfall Data.
33 http://www.swfwmd.state.fl.us/data/wmdbweb/rainfall_data_summaries.php. Accessed on March 20,
34 2012.
- 35 Southwest Florida Water Management District (SWFWMD), 2013, “Minimum Flows and Levels
36 (Environmental Flows),” <https://www.swfwmd.state.fl.us/projects/mfl/>, Accessed on March 13, 2013.
- 37 Stanley, C.D., 2004, Alternative Subirrigation System May Solve Flatford Swamp Tree Mortality Problem,
38 Soil and Water Science Research Brief SWS-02-04, University of Florida – Institute of Food and
39 Agricultural Sciences (UF-IFAS).
- 40 Stonegate Agricom Ltd., 2013, Paris Hills Phosphate Project, accessed via the internet at:
41 <http://www.stonegateagricom.com/s/ParisHills.asp>. Accessed on January 4, 2013.

- 1 Thornton, Shelley/Mosaic Fertilizer LLC, 2012, Personal Communication with Steve Gong/CH2M HILL
2 and David Green/CH2M HILL, Subject: Economics RFAI, February 1, 2012.
- 3 Uebelhoer, Gary, 1982, Photographs of Pine Level (APL #29 and AMAX) Description of Photo Locations.
- 4 University of Florida Bureau of Economic and Business Research (UF-BEBR), 2011, Projections of
5 Florida Population by County, 2010-2040, by Stanley K. Smith and Stefan Rayer, Florida Population
6 Studies, Volume 44, Bulletin 159, June.
- 7 University of Florida - Institute of Food and Agricultural Sciences (UF-IFAS), 2009, County Property
8 Values and Tax Impacts of Florida's Citrus Industry, Publication FE437.
- 9 University of South Florida (USF) Polytechnic, 2012. Phosphate Primer. Accessed via internet at:
10 <http://www1.fipr.state.fl.us/PhosphatePrimer/>. Accessed in March 2012.
- 11 URS Corporation (URS), 2005, Charlotte Harbor Hydrologic Conditions Analysis, Final Report, Prepared
12 for Charlotte Harbor National Estuary Program.
- 13 U.S. Army Corps of Engineers (USACE), 1988. A Guide to Selected Florida Wetland Plants and
14 Communities. Jacksonville District, Regulatory Division. 319 pp.
- 15 U.S. Army Corps of Engineers (USACE), 2002, Department of the Army Permit Number SAJ-1995-00794
16 (IP-CS Mod 6) and SAJ-1999-05366 (IP-CS), issued to IMC Phosphate Company, Expiration date
17 February 26, 2032, pp 685, February 27.
- 18 U.S. Army Corps of Engineers (USACE), 2007, Ona Mine Project, Mosaic Fertilizer, LLC, Hardee County,
19 Florida, Final Environmental Impact Statement, Jacksonville District.
- 20 U.S. Army Corps of Engineers (USACE). 2008, Final Environmental Assessment, Finding of No
21 Significant Impact, and Regulatory Analysis for the Compensatory Mitigation Regulation, Department of
22 the Army, Civil Works. March 28.
- 23 U.S. Army Corps of Engineers (USACE), 2010, Department of the Army Permit Number SAJ-1997-4099-
24 IP-MGH, issued to Mosaic Fertilizer, LLC, Expiration date June 10, 2028, pp 42.
- 25 U.S. Army Corps of Engineers (USACE), 2012, 2012 Nationwide Permits, Conditions, District Engineer's
26 Decision, Further Information, and Definitions (with corrections), September 9, accessed via internet at:
27 <http://www.usace.army.mil/Missions/CivilWorks/RegulatoryProgramandPermits/NationwidePermits.aspx>.
28 Accessed February 18, 2013.
- 29 U.S. Army Corps of Engineers (USACE), 2013, Jacksonville District Regulatory Source Book,
30 <http://www.saj.usace.army.mil/Missions/Regulatory/SourceBook.aspx>. Accessed on March 14, 2013.
- 31 U.S. Army Corps of Engineers (USACE) Engineer Research and Development Center (ERDC), 2002,
32 Technical and Scientific Considerations for Upland and Riparian Buffer Strips in the Section 404 Permit
33 Process, Wetland Regulatory Assistance Program, ERDC TN-WRAP-01-06.
- 34 U.S. Army Corps of Engineers (USACE) and U.S. Environmental Protection Agency (USEPA), 1989,
35 Memorandum of Agreement between the Department of the Army and the Environmental Protection
36 Agency concerning the determination of the Section 404 Program and the application of the exemptions
37 under Section 404(f) of the Clean Water Act. Signed January 19, 1989, Washington, D.C.
- 38 U.S. Census Bureau, 1980, Florida: Population of Counties by Decennial Census:1900 to 1990, accessed
39 via the internet at <http://www.census.gov/population/cencounts/fl190090.txt>, Compiled and edited by
40 Richard L. Forstall.

- 1 U.S. Census Bureau, 1990, Population of Counties by Decennial Census:1900 to 1990, accessed via the
2 internet at <http://www.census.gov/population/cencounts/fl190090.txt>, Compiled and edited by Richard L.
3 Forstall.
- 4 U.S. Census Bureau, 2000, Census 2000 Centers of Population by County, accessed via the internet at:
5 <https://www.census.gov/geo/www/cenpop/county/coucntr12.html>,
- 6 U.S. Census Bureau, 2010, State and County Quick Facts, accessed via the internet at:
7 <http://quickfacts.census.gov/qfd/states/12/12027.html>.
- 8 U.S. Census Bureau, 2011a, American Community Survey, 2006 – 2010, Accessed via internet at
9 http://www.census.gov/acs/www/data_documentation/data_main/.
- 10 U.S. Census Bureau. 2011b. Commodity 2510: Natural calcium phosphates, natural aluminum calcium
11 phosphates and phosphatic chalk.
- 12 U.S. Department of Commerce, 1997, Regional Multipliers: A User Handbook for the Regional Input-
13 Output Modeling System (RIMS II), Third Edition, Economics and Statistics Administration and Bureau of
14 Economic Analysis, March.
- 15 U.S. Department of Energy, 2003, Tucson Electric Power Company (TEP) Sahuarita–Nogales
16 Transmission Line Draft Environmental Impact Statement (EIS), DOE/EIS-0336.
- 17 U.S. Department of the Interior, Bureau of Mines, 1987, Phosphate rock, Pp. 211-222 In: Bureau of
18 Mines, An Appraisal of mineral availability for 34 commodities, Washington, D.C., available for review at
19 the University of South Florida Library, Tampa, Florida.
- 20 U.S. Environmental Protection Agency (USEPA), 1974, Report to Congress, Disposal of Hazardous
21 Waste, prepared by the Office of Solid Waste Management Programs, Publication SW-115, Washington,
22 D.C., p. 43, Available at:
23 [http://books.google.com/books?id=CxFSAAAAMAAJ&printsec=frontcover&source=gbs_ge_summary_r&c](http://books.google.com/books?id=CxFSAAAAMAAJ&printsec=frontcover&source=gbs_ge_summary_r&cad=0#v=onepage&q&f=false)
24 [ad=0#v=onepage&q&f=false](http://books.google.com/books?id=CxFSAAAAMAAJ&printsec=frontcover&source=gbs_ge_summary_r&cad=0#v=onepage&q&f=false)
- 25 U.S. Environmental Protection Agency (USEPA), 1978a, Final Areawide Environmental Impact Statement
26 Central Florida Phosphate Industry Volume I, Impacts of Proposed Action, EPA- 904-78-026a, November.
- 27 U.S. Environmental Protection Agency (USEPA), 1978b, Final Areawide Environmental Impact Statement
28 Central Florida Phosphate Industry Volume II, Background and Alternatives Assessment, EPA-904-78-
29 026b, November.
- 30 U.S. Environmental Protection Agency (USEPA), 1978c, Final Areawide Environmental Impact Statement
31 Central Florida Phosphate Industry Volume III, Response to Comments on DEIS, November.
- 32 U.S. Environmental Protection Agency (USEPA), 1979, Environmental Impact Statement, Estech General
33 Chemical Corporation, Duette Mine, Manatee County, Florida, USEPA Region 4, EPA-904/9-79-044,
34 October.
- 35 U.S. Environmental Protection Agency (USEPA), 1981a, Draft Environmental Impact Statement
36 Mississippi Chemical Corporation, Hardee County Phosphate Mine, Hardee County, Florida, August.
- 37 U.S. Environmental Protection Agency (USEPA), 1981b, Environmental Impact Statement. Mississippi
38 Chemical Corporation, Hardee County Phosphate Mine, Hardee County, Florida. USEPA Region 4, EPA-
39 904/9-81-058. August.
- 40 U.S. Environmental Protection Agency (USEPA), 1981c, Environmental Impact Statement, Farmland
41 Industries, Inc., Phosphate Mine, Hardee County, Florida, USEPA Region 4, EPA-904/9-81-085. October.
42 Not available online; may be viewed at USEPA Region 4 offices in Atlanta, Georgia.

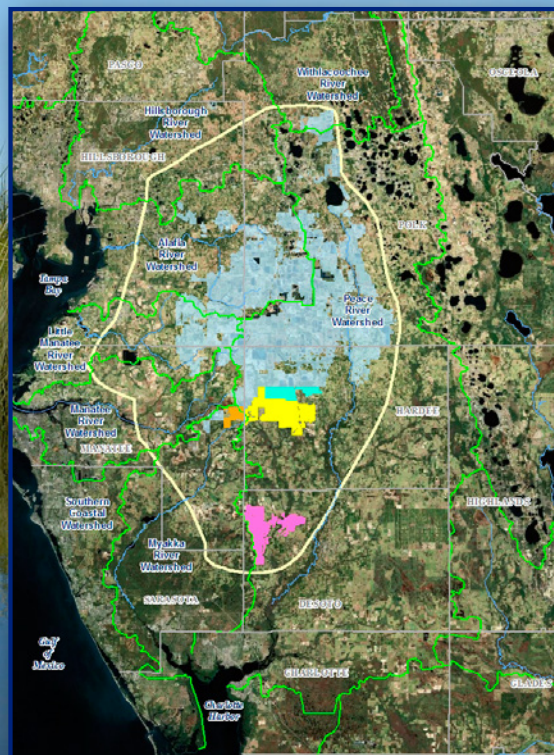
- 1 U.S. Environmental Protection Agency (USEPA), 1982a, Environmental Impact Statement, Phosphate
2 Rock Plants, Background Information for Promulgated Standards. USEPA, Office of Air Quality, Planning
3 and Standards, Research Triangle Park, NC, EPA-450/3-79-017b, April.
- 4 U.S. Environmental Protection Agency (USEPA), 1982b, Final Environmental Impact Statement, Mobil
5 Chemical Company, South Fort Meade Mine, Polk County, Florida, USEPA region 4, EPA-904/9-81-092,
6 January.
- 7 U.S. Environmental Protection Agency (USEPA), 1988a, Draft Environmental Impact Statement for
8 Proposed Issuance of a New Source National Pollutant Discharge Elimination System Permit to
9 CF Mining Corporation.
- 10 U.S. Environmental Protection Agency (USEPA), 1989, CF Mining Corporation Final Environmental
11 Impact Statement New Source NPDES Permit. Not available online; may be reviewed at USEPA Region
12 IV library, Atlanta, Georgia.
- 13 U.S. Environmental Protection Agency (USEPA), 2007a, Technical Report on Technologically Enhanced
14 Naturally Occurring Radioactive Materials from Uranium Mining, Volume 1, Mining Reclamation.
- 15 U.S. Environmental Protection Agency (USEPA), 2007b, National Estuary Program Coastal Condition
16 Report, Chapter 5, Gulf of Mexico National Estuary Program Coastal Condition, Charlotte Harbor National
17 Estuary Program, June.
- 18 U.S. Environmental Protection Agency (USEPA), 2011a, National Estuary Programs,
19 http://water.epa.gov/type/oceb/nep/programs_ch.cfm, Accessed June 2011.
- 20 U.S. Environmental Protection Agency (USEPA), 2012a, Fertilizer and Fertilizer Production Wastes.
21 Office of Radiation and Protection. Accessed January 2012 at:
22 <http://www.epa.gov/radiation/tenorm/fertilizer.html>.
- 23 U.S. Environmental Protection Agency (USEPA), 2012b, Mitigation Banking Factsheet, Accessed via
24 internet at <http://www.epa.gov/owow/wetlands/facts/fact16.html>. Accessed January 23, 2012.
- 25 U.S. Environmental Protection Agency (USEPA), 2012c, “About Phosphogypsum, Stacks,” Last update
26 on July 31, 2012.
- 27 U.S. Environmental Protection Agency (USEPA) and U.S. Army Corps of Engineers (USACE), 2008,
28 Compensatory Mitigation for Losses of Aquatic Resources; Final Rule. Federal Register, Vol. 73, No. 70.
29 Rules and Regulations, pp. 19594 – 19705, Accessed via internet at
30 http://www.epa.gov/owow/wetlands/pdf/wetlands_mitigation_final_rule_4_10_08.pdf. April 10.
- 31 U.S. Fish and Wildlife Service (USFWS), 2012, South Florida Multi-Species Recovery Plan, Florida
32 Scrub-Jay. Accessed via internet at <http://www.fws.gov/verobeach/ListedSpeciesMSRP.html>, Initial
33 version completed in 1999.
- 34 U.S. Geological Survey (USGS), 1980, Mineral Reserves, Resources, Resource Potential, and Certainty,
35 pp. 95-97.
- 36 U.S. Geological Survey (USGS), 1999a, Fertilizers – Sustaining Global Food Supplies, USGS Fact Sheet
37 155-99, accessed at <http://pubs.usgs.gov/fs/fs155-99/fs155-99.html> : As accessed August 7, 2012.
- 38 U.S. Geological Survey (USGS), 2000, *Regional Evaluation of Evapotranspiration in the Everglades*,
39 Water Resources Investigation Report 00-4217, Tallahassee, Florida.
- 40 U.S. Geological Survey (USGS), 2001, Mineral Commodity Summaries; Phosphate Rock by Stephen
41 Jasinski, page 120.

- 1 U.S. Geological Survey (USGS), 2003, Mineral Commodity Summaries; Phosphate Rock by Stephen
2 Jasinski, page 124.
- 3 U.S. Geological Survey (USGS), 2004a, The Mining Industry of Florida, U.S. Geological Survey Minerals
4 Yearbook – 2003, Chapter 11, accessed via internet at:
5 <http://minerals.usgs.gov/minerals/pubs/state/2003/flstmyb03.pdf> , Accessed May 17, 2012..
- 6 U.S. Geological Survey (USGS), 2005, Mineral Commodity Summaries; Phosphate Rock by Stephen
7 Jasinski, page 122.
- 8 U.S. Geological Survey (USGS), 2008a, 2007 Minerals Yearbook, Phosphate Rock by Stephen Jasinski,
9 August. http://minerals.usgs.gov/minerals/pubs/commodity/phosphate_rock/myb1-2007-phosp.pdf.
- 10 U.S. Geological Survey (USGS), 2008b, Mineral Commodity Summaries; Phosphate Rock by Stephen
11 Jasinski, page 124.
- 12 U.S. Geological Survey (USGS), 2009, Mineral Commodity Summaries; Phosphate Rock by Stephen
13 Jasinski, page 120.
- 14 U.S. Geological Survey (USGS). 2010a. Mineral Commodity Summaries; Phosphate Rock by Stephen
15 Jasinski, page 118, January.
- 16 U.S. Geological Survey (USGS), 2011a, Mineral Commodity Summaries; Phosphate Rock by Stephen
17 Jasinski, Accessed June 12, 2011, via internet at
18 http://minerals.usgs.gov/minerals/pubs/commodity/phosphate_rock/mcs-2011-phosp.pdf.
- 19 U.S. Geological Survey (USGS), 2011b, 2010 Minerals Yearbook, Phosphate Rock by Stephen Jasinski,
20 October. http://minerals.usgs.gov/minerals/pubs/commodity/phosphate_rock/myb1-2010-phosp.pdf.
- 21 U.S. Geological Survey (USGS), 2012a, Mineral Commodity Summaries; Phosphate Rock by Stephen
22 Jasinski, page xx
- 23 U.S. Geological Survey (USGS), 2012b, USGS Water Data for the Nation, National Water Information
24 System: Web Interface, <http://waterdata.usgs.gov/nwis>. Accessed February 2012.
- 25 U.S. Geological Survey (USGS), 2012c, USGS Surface-Water Daily Data for Florida,
26 http://waterdata.usgs.gov/fl/nwis/dv/?referred_module=sw. Accessed March 2012.
- 27 U.S. Geological Survey (USGS), 2013a, Mineral Commodity Summaries, Phosphate Rock, by Stephen
28 Jasinski, page 118, January.
- 29 U.S. Geological Survey (USGS), 2013b, National Hydrography Dataset (NHD) data.
- 30 Watson, A.P., E.L. Etnier and L.M. McDowell-Boyer. 1983. Radium-226 in Drinking Water and Terrestrial
31 Food Chains: A Review of Parameters and an Estimate of Exposure and Dose. Prepared by Oak Ridge
32 National Laboratory (ORNL) for the Florida Institute of Phosphate Research (FIPR). Report
33 No. ORNL/TM-8597.
- 34 White, William A., 1970, The Geomorphology of the Florida Peninsula, Florida Department of Natural
35 Resources, Bureau of Geology, Division of Interior Resources, Geological Bulletin No. 51, Tallahassee,
36 Florida.
- 37 White House Office of Management and Budget (OMB), 2012, Guidelines and Discount Rates for Benefit-
38 Cost Analysis of Federal Programs, 2012 Circular A-94, January.
- 39 Willis, Raymond, 1977, Archaeological and Historical Resources of Farmland Industries, Inc. Property,
40 Hardee County, Florida.

- 1 Willis, Raymond, 1979a, AMAX Pine Level Survey-An Archaeological and Historical Survey of AMAX
2 Property in Manatee and Desoto Counties, Florida.
- 3 Willis, Raymond, 1979b, Archaeological and Historical Survey of Farmland's Phosphate Plant Site,
4 Hardee County, Florida.
- 5 Wood, Lewis N. Jr., 1976, An Archaeological and Historical Survey of the CF Mining Property in
6 Northwestern Hardee County, Florida.
- 7 Woolwine, Bill, 2011. History of Phosphate Industry in Florida, Winter Haven High School. November 11.
8 <http://www.polk-fl.net/staff/teachers/tah/documents/floridaflavor/lessons/g-7.pdf>
- 9 World Port Source, 2012, Tampa Port Authority – Port Commerce, accessed via the internet at:
10 http://www.worldportsource.com/ports/commerce/USA_FL_Tampa_Port_Authority_96.php. Accessed
11 May 2012.
- 12 Yeates, J.S., and M.F. Clarke, 1993, Developing Alternatives to Phosphate fertilizers of High Water
13 Solubility, in Nutrient Cycling in Agroecosystems, 36(2): 141-150. Abstract available at
14 [https://www.researchgate.net/publication/226190672_Developing_alternatives_to_phosphate_fertilizers](https://www.researchgate.net/publication/226190672_Developing_alternatives_to_phosphate_fertilizers_of_high_water_solubility)
15 [of_high_water_solubility](https://www.researchgate.net/publication/226190672_Developing_alternatives_to_phosphate_fertilizers_of_high_water_solubility). Accessed in December 2011.
- 16 Yobbi, D.L.,1996, Analysis and Simulation of Ground-Water Flow in Lake Wales Ridge and Adjacent
17 Areas of Central Florida, U.S. Geological Survey, USGS Water-Resources Investigations Report 94-4524.
18 Prepared in cooperation with the Southwest Florida Water Management District.
- 19 Zwick and Carr, 2006, Florida 2060, a Population Distributon Scenario for the State of Florida, University
20 of Florida Geo Plan Center, prepared on behalf of 1,000 Friends of Florida, August 15.

CHAPTER 8

LIST OF PREPARERS



CHAPTER 8

LIST OF PREPARERS

U.S. Army Corps of Engineers, Jacksonville District, Regulatory Division

John Fellows, *AEIS Project Manager*

Grad Dip, Environmental Management, U. of
Southern Queensland
M.S., Marine Biology, Florida Institute of
Technology
B.S., Biology, Worcester State College
Experience: 22 years

Tunis McElwain, *Mining Coordinator*

B.S. Public Affairs, Indiana University
Experience: 18 years

Leah Oberlin, *Technical Reviewer*

M.S., Env. Engineering, U. of Notre Dame
B.S., Marine Sciences, Texas A&M University
Experience: 12 years

U.S. Environmental Protection Agency, Region 4

Captain Paul Gagliano, P.E., *AEIS NEPA Lead – Draft AEIS*

Commander, U.S. Public Health Service
M.S., Civil Engineering, U. of Alabama at
Birmingham
B.C.E., Civil Engineering, Auburn University
Experience: 25 years

Dan Holliman, *AEIS NEPA Lead – Final AEIS*

NEPA Program Office
M.S., Aquatic Biology, University of Alabama
B.S., Biology/Marine Science, University of
Alabama
Experience: 10 years

David Pritchett, *Technical Reviewer & EPA Wetlands Lead for the AEIS*

M.S., Wetlands Planning and Regulatory Issues,
U. of Wisconsin-Madison
M.S., Land Resources, U. of Wisconsin-Madison
B.A., Env. Studies, U. of California at Santa
Barbara
Experience: 20 years

Heinz J. Mueller, *Technical Reviewer -- NEPA*

Chief, National Environmental Policy Act
Program Office
Master of City Planning, School of City and
Regional Planning, Georgia Tech
B.S., Industrial and Systems Engineering,
Georgia Tech
Experience: 40 years

Duncan Powell, *Technical Reviewer -- NEPA*

NEPA Program Office
B.S., Biological Science (Marine Fisheries
emphasis), Auburn University
Experience: 34 years

Jamie Higgins, *Technical Reviewer – NEPA – Final AEIS*

NEPA Program Office
B.S., Biology, Auburn University
Experience: 20 years

Florida Department of Environmental Protection, Bureau of Mining and Minerals Regulation

Calvin Alvarez, *Bureau Chief, AEIS Lead, Technical Reviewer – Phosphate Mining*

B.S., Biology, East Carolina University
Experience: 14 years

Orlando E. Rivera, *Technical Reviewer – Phosphate Mining*

MPA, Env. Management, Florida State
University
B.S., Natural Sciences, University of Puerto Rico
Experience: 25 years

CH2M HILL

Valerie Ross, *Project Manager – Final AEIS*

M.R.P., Regional Planning, U. of Pennsylvania
B.S., Biology, Bucknell University
Experience: 32 years

Ruth Rouse, AICP, *Project Manager – Final AEIS*

M.E.M., Env. Management, Duke University
B.S., Mathematics, Davidson College
Experience: 25 years

1	Steven Gong, Project Manager – Draft AEIS	57	Mitchell Griffin, P.E., Surface Water
2	M.S., Zoology, U. of Florida	58	Hydrology Lead
3	B.A., Biological Sciences, U. of Delaware	59	Ph.D. Ag. Engineering, Purdue University
4	Experience: 34 years	60	M.S. Ag. Engineering, U. of Kentucky
5		61	B.S. Civil Engineering, U. of Kentucky
6	Darren Bishop, Assistant Project Manager –	62	Experience: 32 years
7	Final AEIS	63	
8	M.S., Soil and Water Science, U. of Florida	64	Rafael Vazquez-Burney, P.E., Surface Water
9	B.S., Environmental Science and B.A. English,	65	Hydrology
10	University of South Florida	66	M.C.E., Civil Engineering, North Carolina State
11	Experience: 12 years	67	University
12		68	B.S., Environmental Engineering, North Carolina
13	Don Holmes, QA/QC Manager	69	State University
14	M.S., Marine Biology, University of Miami	70	Experience: 12 years
15	B.S., Biology, Michigan Tech University	71	
16	Experience: 43 years	72	Jeffrey D. Lehn, P.G.,
17		73	Geology/Hydrogeology Lead
18	Steve Petron, QA/QC Manager	74	B.S., Geology, University of Florida
19	Ph.D., Zoology, Washington State University,	75	Experience: 35 years
20	M.S., Natural and Environmental Resources,	76	
21	University of New Hampshire	77	Christopher Peters, P.G.,
22	B.S., Wildlife Management, University of	78	Geology/Hydrogeology/Modeling – Draft AEIS
23	Minnesota	79	M.S., Hydrology, University of Arizona
24	Experience: 35 years	80	B.S., Geology, Michigan State University
25		81	Experience: 15 years
26	Tom Simpson, PWS, Senior Consultant	82	
27	PhD, Biological Science, Florida State University	83	Christina McDonough, P.E.,
28	M.S., Zoology, Louisiana State University	84	Hydrogeology/Modeling
29	B.S., Biology, Middle Tennessee State	85	M.E., Environmental Engineering, U. of Florida
30	University	86	B.S.C.E., Civil Engineering, U. of Florida
31	Experience: 42 years	87	Experience: 20 years
32		88	
33	Tom Waters, P.E., P.M.P., QA/QC Review	89	Sarah Braman, E.I., GIS/Data Management
34	M.E., Education, Boston University	90	B.S., Biological and Agricultural Engineering,
35	B.S., Engineering, USMA - West Point	91	North Carolina State University
36	Experience: 32 years	92	Experience: 5 years
37		93	
38	Randy Bushey, P.E., Mining	94	David Green, Economics Lead
39	Technologies/Engineering Lead	95	M.S., Economics, Portland State University
40	B.S., Engineering, U. California – Los Angeles	96	B.S., Agricultural and Natural Resources
41	Experience: 37 years	97	Economics, Oregon State University
42		98	Experience: 34 years
43	Tunch Orsoy, Ecology Lead	99	
44	M.S., Marine Science, U. of South Florida	100	Louis Munoz, Economics Support
45	B.S., Zoology, U. of Georgia	101	B.S., Economics, Saint Thomas University
46	Experience: 23 years	102	Experience: 16 years
47		103	
48	Angela Dalsis, Wetlands Ecology	104	Heather Broome, Environmental Justice
49	B.S., Env. Science and Policy, U. of South	105	M.C.P., Environmental Planning, Georgia
50	Florida	106	Institute of Technology
51	Experience: 12 years	107	B.A., Business Administration, Real Estate,
52		108	University of Georgia
53	Rick Gorsira, Ecology and Public	109	Experience: 18 years
54	Involvement	110	
55	B.S., Zoology, University of Florida		
56	Experience: 27 years		

1	Wendy Nero, Public Involvement Lead	52	CRITIGEN
2	M.S., Water Resources Planning, Southern	53	
3	Illinois University	54	Cory Swales, Geographic Information
4	B.S., Env. Science, Morehead State University	55	Systems Lead
5	Experience: 27 years	56	M.S., Urban and Regional Planning, U. of
6		57	Florida
7	Amanda Berens, P.E.,	58	B.A., Public Administration, U. of Central Florida
8	Hydrogeology/Groundwater Quality	59	Experience: 9 years
9	M.S., Civil Engineering, U. of California – Irvine	60	
10	B.S., Geol. Engineering, U. of Missouri – Rolla	61	ICF International
11	Experience: 13 years	62	
12		63	William Baird, CommentWorks Software
13	R. Walter Ogburn, III, Surface Water Quality	64	Applications
14	Ph.D., Env. Engineering Science, U. of Florida	65	Project Management Professional
15	M.S., Marine Science, U. of Alabama	66	B.A., American Government, Georgetown
16	B.S., Biology, Rhodes College,	67	University
17	Experience: 33 years	68	Experience: 21 years
18			
19	Elizabeth Calvit, Cultural/Historical		
20	Resources Lead		
21	Qualified under Secretary of the Interior's		
22	Historic Preservation Professional Qualification		
23	Standards		
24	M.A., American Studies, Historic Preservation;		
25	George Washington University		
26	B.ID., Interior Design, Louisiana State University		
27	Experience: 20 years		
28			
29	Jim Bays, PWS, SE, Reclamation/Restoration		
30	Technologies		
31	M.S., Environmental Engineering Sciences,		
32	University of Florida		
33	B.S., Environmental Biology, Ohio University		
34	Experience: 33 years		
35			
36	Steve Stuart, Technical Editing and		
37	Document Management Lead		
38	B.S., Communication, Florida State University		
39	Experience: 29 years		
40			
41	David Dunagan, Technical Editing		
42	M.A. English, University of Florida		
43	Master of Divinity, Emory University		
44	B.A. English, Georgia State University		
45	Experience: 36 years		
46			
47	Chad Tilton, Webmaster		
48	B.A., Communications and Journalism, U. of		
49	New Mexico		
50	Experience: 11 years		
51			

1

2

3

4

5

6

7

8

9

10

11

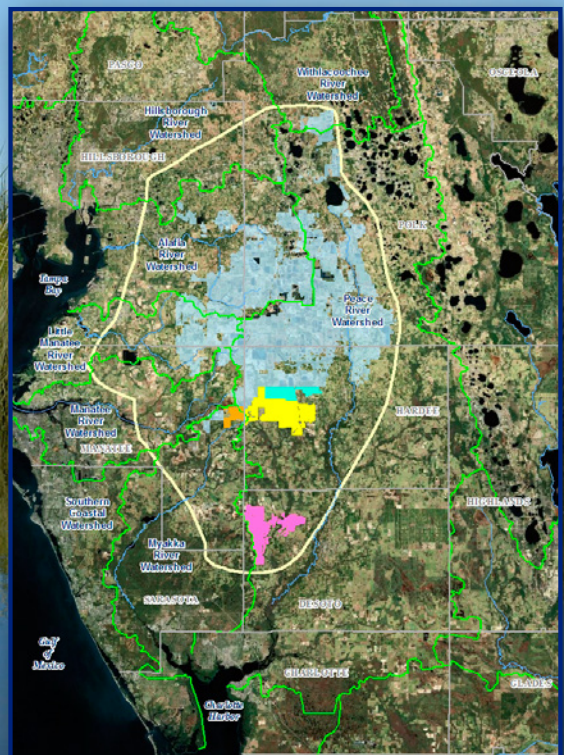
12

13

This page intentionally left blank.

CHAPTER 9

DISTRIBUTION LIST



CHAPTER 9 DISTRIBUTION LIST

The U.S. Army Corps of Engineers provided copies of the *Final Areawide Environmental Impact Statement* to federal, state, and local officials, governmental agencies, tribal representatives, organizations and companies, and individuals listed in this chapter. Copies were distributed to public libraries located within the AEIS study area and a set of pdf files was made accessible to the public through the AEIS website at www.phosphateaeis.org. Copies will be provided to others upon request.

United States Congress

U.S. House of Representatives

District 10 - Daniel Webster
District 14 - Kathy Castor
District 15 - Dennis Ross
District 16 - Vern Buchanan
District 17 - Tom Rooney

U.S. Senate

Marco Rubio, R-Florida
Bill Nelson, D-Florida

Federal Agencies

Advisory Council on Historic Preservation
John Fowler

U.S. Coast Guard, District 7
Radm. William Baumgartner

U.S. Department of Agriculture
Natural Resources Conservation Service
Rosalind Moore

U.S. Department of the Interior
National Marine Fisheries Service – NOAA
Dr. Roy Crabtree
Mark Sramek
Shelley Norton

U.S. Fish and Wildlife Service
Cindy Dohner
Heath Rauschenberger
Victoria Foster
Paul Tritaik

U.S. Geological Survey
Arturo Torres
Terrie Lee
Patricia Metz

U.S. Environmental Protection Agency, Region IV
Jamie Higgins
Alan Annicella
Stephen Maurano
Duncan Powell
Dan Holliman
Cpt. Paul Gagliano
Lee Thomas
Heinz Mueller
Phil Mancusi-Ungaro

U.S. Environmental Protection Agency
National Center for Environmental Economics
Dr. Patrick Walsh
Dr. Matt Massey
Charlotte Harbor National Estuary Program
Dr. Lisa Beever

State Agencies

1		23	Florida Division of Historical Resources
2	Florida Department of Environmental Protection	24	Office of Cultural and Historical Programs
3	Herschel T. Vinyard Jr.	25	Rob Bendus
4		26	
5	Bureau of Mining and Minerals Regulation	27	Central Florida Regional Planning Council
6	Calvin Alvarez	28	Jennifer Codo-Salisbury
7	Orlando Rivera	29	
8		30	Southwest Florida Regional Planning Council
9	Office of Intergovernmental Programs-State	31	Liz Donley
10	Clearinghouse	32	
11	James Quinn	33	Southwest Florida Water Management District
12	Lauren Mulligan	34	Ron Basso
13		35	
14	Florida Department of Agriculture and Consumer	36	Florida Department of Transportation
15	Services	37	Aaron D. Kaster
16	Noel Marton	38	
17		39	
18	Florida Fish and Wildlife Conservation	40	
19	Commission	41	
20	Nick Wiley	42	
21	Chris Wynn		
22	Gregg Poulakis		

Local Government

43		69	Lee County Commission
44		70	John Manning
45		71	Roland Ottolini
46	Mayors	72	Susan Henderson
47	William Albers, City of Punta Gorda	73	
48		74	Manatee County Commission
49	City Officials	75	John Chappie
50	Howard Kunik, City of Punta Gorda	76	Charlie Hunsicker
51	Jonathan Lewis, City of North Port	77	
52	Elizabeth Wong, City of North Port	78	Polk County Commission
53		79	Melony Bell
54	Charlotte County Commission	80	Amea Bailey
55	Christopher Constance	81	
56		82	Sarasota County Commission
57	DeSoto County Commission	83	Christine Robinson
58	Buddy Mansfield	84	
59	Jan Brewer	85	Peace River Manasota Regional Water Supply
60		86	Authority
61	Hardee County Commission	87	Mike Coates
62	Sue Birge	88	
63	West Palmer	89	
64	Kevin Denny	90	
65			
66	Hillsborough County Commission		
67	Ken Hagan		
68	Mike Williams		

Tribal Representatives

91		97	Seminole Tribe of Florida
92		98	Dr. Paul Backhouse
93			
94	Miccosukee Tribe of Indians of Florida		
95	Fred Dayhoff		
96			
99			

Organizations and Companies

1000 Friends of Florida, Charles Pattison
 3PR, Dennis Mader
 Applied Environmental Services, Sydney Bacchus
 Audubon - Lake Region, Reinier Munguia
 Audubon - Peace River, Larry Behrens
 CF Industries, Inc., Craig Kovach and Gary Blitch
 Common Purpose Institute, Steve Segrest
 de la Parte & Gilbert, PA, Linda Kaufmann Foy
 Ecology Party, Cara Campbell
 ECOSWF (Environmental Confederation of SouthWest Florida)
 Florida Industrial and Phosphate Research Institute, Dr. Brian Birky
 Fort Myers – Lee County Garden Council, Inc., Laura Jibben
 Hopping Green & Sams, Susan Stephens
 Manasota 88
 Manson Law Group, Laura Donaldson
 Mosaic Fertilizer, LLC, Deedra Allen, Shelley Thornton, Peggy Strand, Kirk Stark
 Protect Our Watersheds, Jim Cooper
 Sanibel Captiva Conservation Foundation, Rae Ann Wessel
 Sierra Club – Florida Chapter, Craig Diamond
 Sierra Club – Ancient Islands Group, Andy Quinn
 Sierra Club – Manatee-Sarasota Group, Linda Jones
 Sierra Club – Greater Charlotte Harbor Group, John Phillips

Public Libraries

A complete copy of the Areawide Environmental Impact Statement (AEIS) on Phosphate Mining in the Central Florida Phosphate District (CFPD) may be reviewed at the public libraries listed below.

Charlotte County

Mid-County Regional Library
 2050 Forrest Nelson Blvd.
 Port Charlotte, FL 33952
 (941) 613-3200

Port Charlotte Public Library
 2280 Aaron St.
 Port Charlotte, FL 33952
 (941) 625-6470

Punta Gorda Public Library
 424 W. Henry St.
 Punta Gorda, FL 33950
 (941) 639-2049

DeSoto County

DeSoto County Library
 125 N. Hillsborough Ave.
 Arcadia, FL 34266
 (863) 993-4851

Hardee County

Hardee County Public Library
 315 N. 6th Ave.
 Wauchula, FL 33873
 (863) 773-6438

Hillsborough County

Bloomington Regional Library
 1906 Bloomington Ave.
 Valrico, FL 33596-6204
 (813) 273-3652
 Bruton Memorial Library
 302 McLendon St.
 Plant City, FL 33563-3212
 (813) 757-9215

Manatee County

Central Library
 1301 Barcarrota Blvd. W.
 Bradenton, FL 34205-7522
 (941) 748-5555

1 **Polk County**

2 Auburndale Public Library
3 100 W. Bridgers Ave.
4 Auburndale, FL 33823
5 (863) 965-5548
6
7 Bartow Public Library
8 2150 S. Broadway Ave.
9 Bartow, FL 33830
10 (863) 534-0131
11
12 Fort Meade Public Library
13 75 E. Broadway St.
14 Fort Meade, FL 33841
15 (863) 285-8287
16
17 Lakeland Public Library
18 100 Lake Morton Dr.
19 Lakeland, FL 33801
20 (863) 834-4280

21 Larry R. Jackson Library
22 1700 N. Florida Ave.
23 Lakeland, FL 33805
24 (863) 834-4288
25

26 Mulberry Public Library
27 103 E. Canal St.
28 Mulberry, FL 33860
29 (863) 425-3246
30

31 **Sarasota County**

32 North Port Library
33 13800 S. Tamiami Trail
34 North Port, FL 34287
35 (941) 861-1300
36

37
38
39

40
41 **Individuals**

42 Percy Angelo
43 George Brooks
44 Nora Demers
45 Kristi Patel
46 Kenneth Paulsen
47 John Rehill
48