

F
E
D
C
B
A

F

E

D

C

B

A

F

E

D

C

B

A

F

E

D

C

B

A

F

E

D

C

B

A

F

E

D

C

B

A

F

E

D

C

B

A

F

E

D

C

B

A

F

E

D

C

B

A

F

E

D

C

B

A

F

E

D

C

B

A

F

E

D

C

B

A

F

E

D

C

B

A

F

E

D

C

B

A

F

E

D

C

B

A

F

E

D

C

B

A

F

E

D

C

B

A

F

E

D

C

B

A

F

E

D

C

B

A

F

E

D

C

B

A

F

E

D

C

B

A

F

E

D

C

B

A

F

E

D

C

B

A

F

E

D

C

B

A

F

E

D

C

B

A

F

E

D

C

B

A

F

E

D

C

B

A

F

E

D

C

B

A

F

E

D

C

B

A

F

E

D

C

B

A

F

E

D

C

B

A

F

E

D

C

B

A

F

E

D

C

B

A

F

E

D

C

B

A

F

E

D

C

B

A

F

E

D

C

B

A

F

E

D

C

B

A

F

E

D

C

B

A

F

E

D

C

B

A

F

E

D

C

B

A

F

E

D

C

B

A

F

E

D

C

B

A

F

E

D

C

B

A

F

E

D

C

B

A

F

E

D

C

B

A

F

E

D

C

B

A

F

E

D

C

B

A

F

E

D

C

B

A

F

E

D

C

B

A

F

E

D

C

B

A

F

E

D

C

B

A

F

E

D

C

B

A

F

E

D

C

B

A

F

E

D

C

B

A

F

E

D

C

B

A

F

E

D

C

B

A

F

E

D

C

B

A

F

E

D

C

B

A

F

E

D

C

B

A

F

E

D

C

B

A

F

E

D

C

B

A

F

E

D

C

B

A

F

E

D

C

B

A

F

E

D

C

B

A

F

E

D

C

B

A

F

E

D

C

B

A

F

E

D

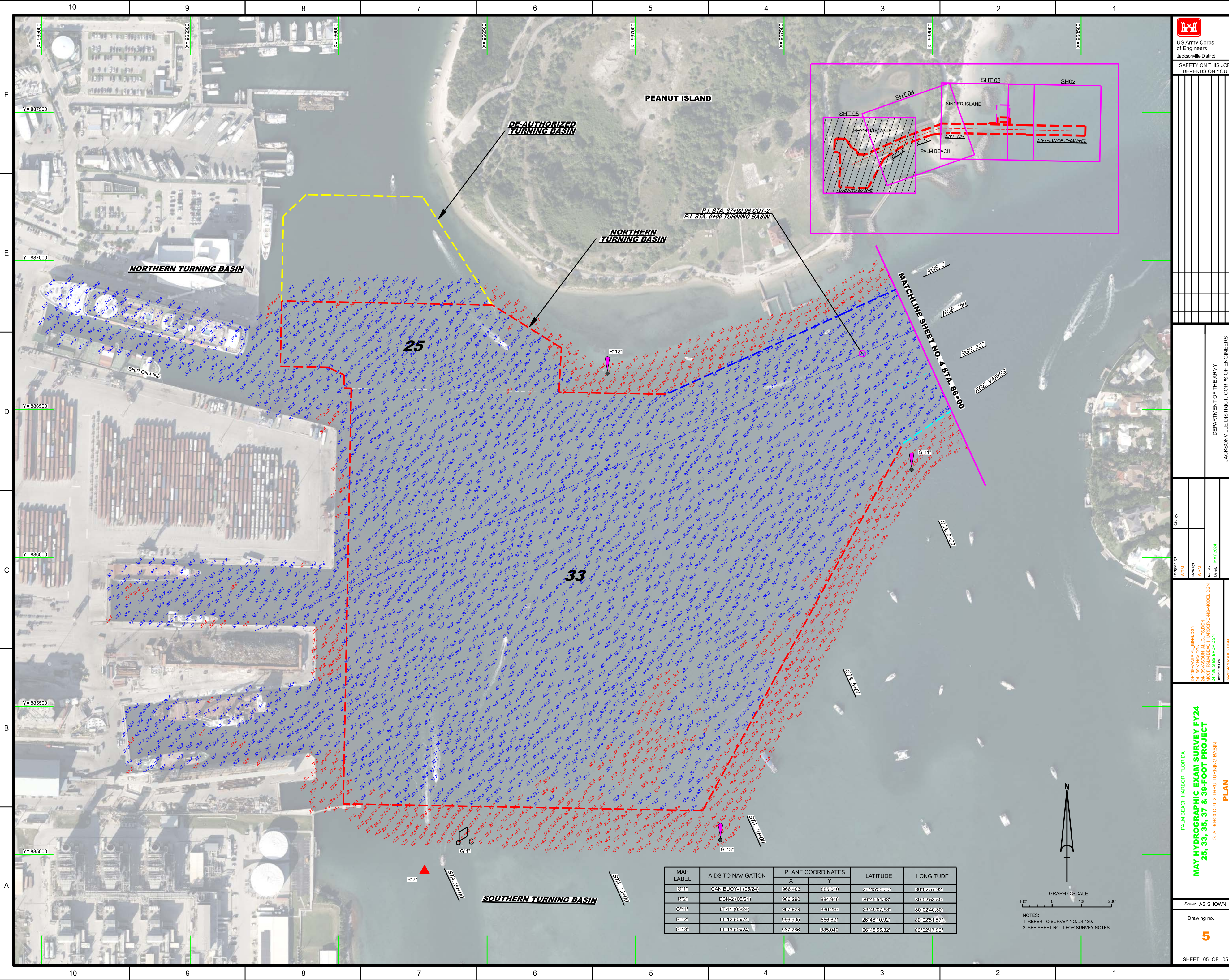
C

B

A

F

E



MAP LABEL	AIDS TO NAVIGATION	PLANE COORDINATES		LATITUDE	LONGITUDE
		X	Y		
G11	CAN BUOY (05/24)	966,403	885,040	26°45'55.30"	80°02'57.92"
R2	DBN-2 (05/24)	966,290	884,946	26°45'54.38"	80°02'58.50"
G11	LT-11 (05/24)	967,929	886,297	26°46'07.63"	80°02'40.30"
R12	LT-12 (05/24)	966,905	886,621	26°46'10.92"	80°02'51.57"
G13	LT-13 (05/24)	967,266	885,049	26°45'55.32"	80°02'47.50"



NOTES:
1. REFER TO SURVEY NO. 24-139.
2. SEE SHEET NO. 1 FOR SURVEY NOTES.

US Army Corps of Engineers
Jacksonville District

SAFETY ON THIS JOB
DEPENDS ON YOU

DEPARTMENT OF THE ARMY
JACKSONVILLE DISTRICT, CORPS OF ENGINEERS
JACKSONVILLE, FLORIDA

24-139-AERIAL-BINGLON
24-139-AHAM-DON
24-139-AHAM-DON
24-139-CGS-BROJORDON
24-139-CGS-BROJORDON
24-139-HS-H05-DON

DATE: MAY 2024

PALM BEACH HARBOR, FLORIDA

MAY HYDROGRAPHIC EXAM SURVEY FY24
25, 33, 37 & 39-FOOT PROJECT
PLAN

STA. 86+00 CUT-2 THRU TURNING BASIN

Scale: AS SHOWN

Drawing no.

5

SHEET 05 OF 05