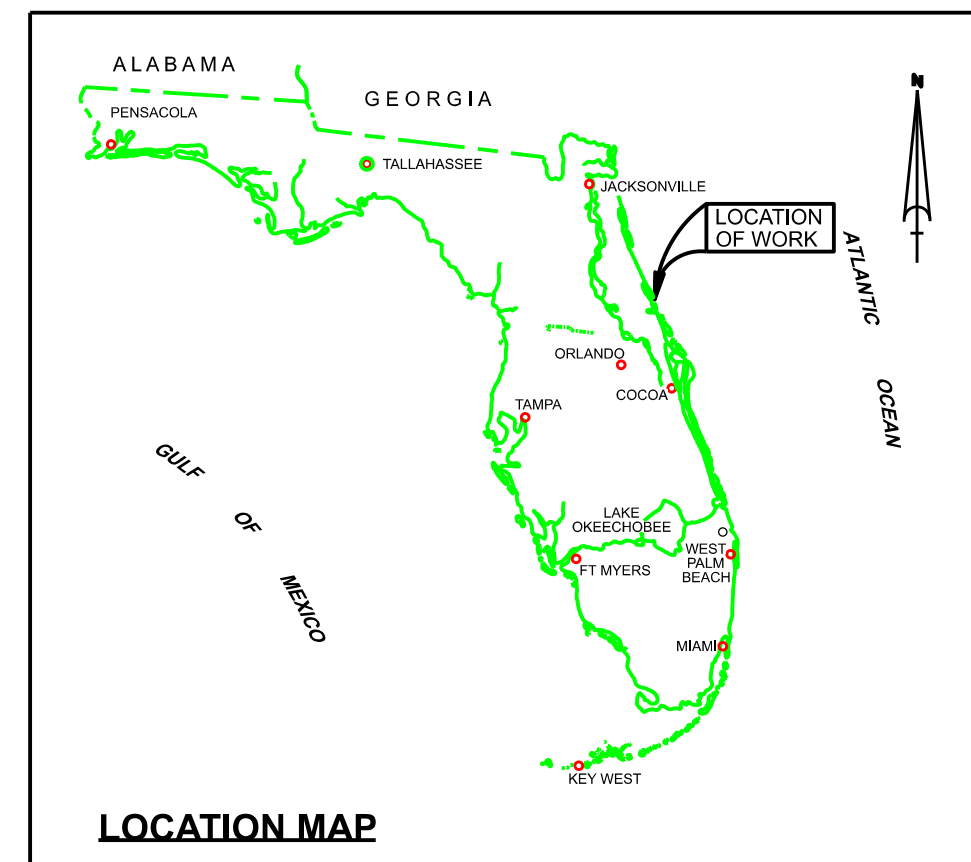


PONCE DE LEON INLET VOLUSIA COUNTY, FLORIDA HYDROGRAPHIC EXAM SURVEY FY24 7 & 12-FOOT PROJECT



US Army Corps of Engineers
Jacksonville District
SAFETY ON THIS JOB DEPENDS ON YOU

DEPARTMENT OF THE ARMY
JACKSONVILLE DISTRICT, CORPS OF ENGINEERS
JACKSONVILLE, FLORIDA

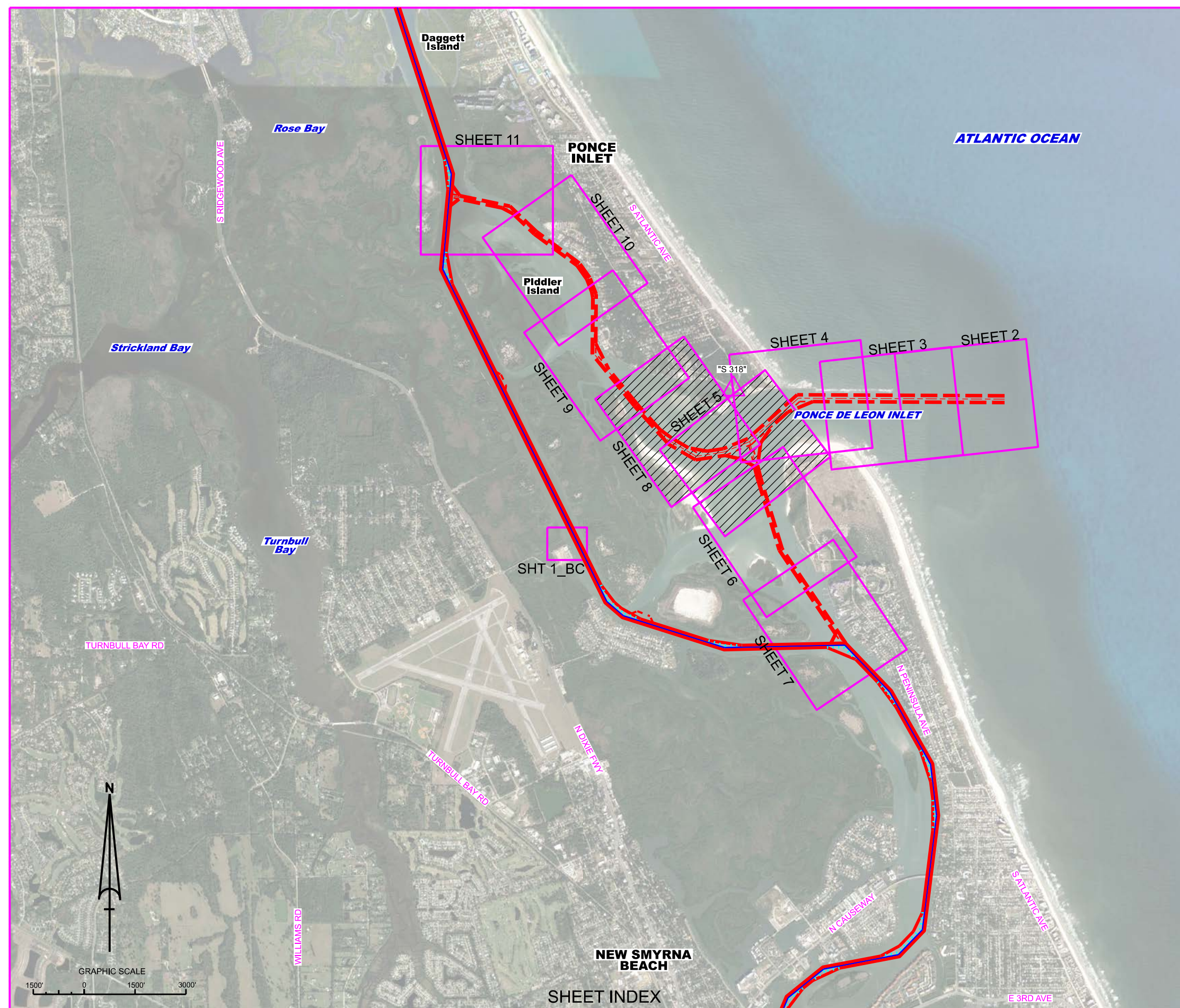
Drawn by: GHR
Checked by: GHR

Designed by: WRM
Drawn by: WRM
File No.: W012225-000-0000
Date: MAY 2024

24-120-ANDRAC.DGN
24-120-CHS-PROJ.DGN
24-120-CHS-PROJ.DGN
24-120-CHS-PROJ.DGN

PONCE DE LEON INLET
VOLUSIA COUNTY, FLORIDA
HYDROGRAPHIC EXAM SURVEY FY24
7 & 12-FOOT PROJECT
INDEX, LOCATION AND VICINITY MAP

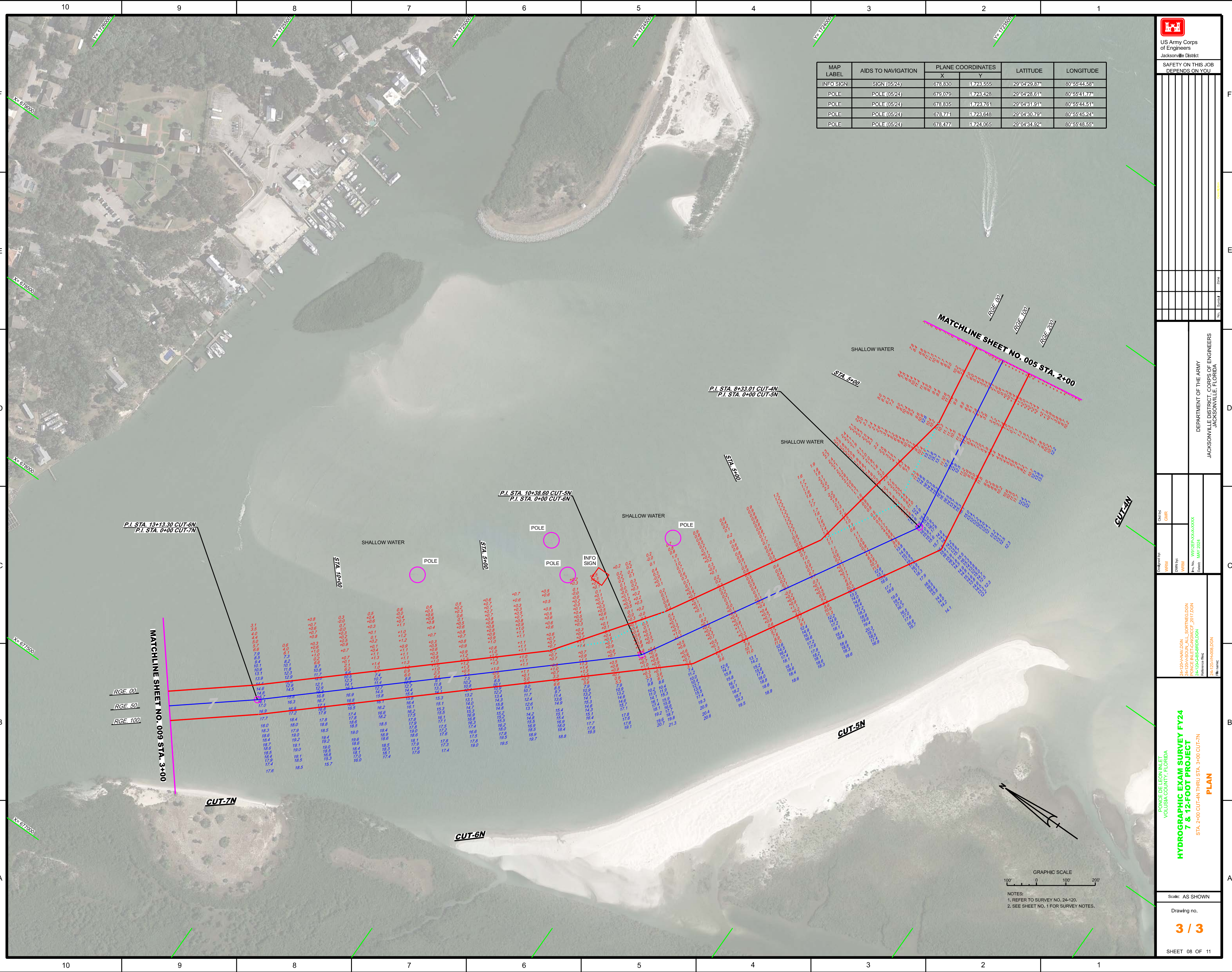
Scale: AS SHOWN
Drawing no. 1 / 3
SHEET 01 OF 11




SURVEY NOTES

- REFER TO SURVEY NO. 24-120.
- TIDAL REDUCTIONS WERE OBTAINED UTILIZING A REAL-TIME KINEMATIC (RTK) GPS AND REFERENCED TO MLLW. KTD FILE NAME IS: "VOLUSIA-BREVARD (W-O_CANAVERALHBR_2021 10 04.KTD)".
- ALL ELEVATIONS ARE BELOW THE CHART DATUM UNLESS PRECEDED BY A (+) SIGN.
- PLANE COORDINATES ARE BASED ON THE TRANSVERSE MERCATOR PROJECTION FOR THE EAST ZONE OF FLORIDA AND REFERENCED TO NORTH AMERICAN DATUM OF 1983 (NAD83).
- ALL STATIONING REFERS TO THE CENTERLINE OF THE CHANNEL.
- THIS SURVEY WAS PERFORMED USING REAL-TIME KINEMATIC (RTK) GPS POSITIONING WITH THE FOLLOWING REFERENCE BASE LOCATION:
REFERENCE BASE LOCATED AT "S 318" (OPUS PID: AQ1393)
- DEPTHS DEPICTED BY THIS SURVEY ARE REFERENCED TO MLLW, TIDAL EPOCH 1983-2001 AS REPORTED BY THE NATIONAL OCEANIC AND ATMOSPHERIC ADMINISTRATION (NOAA). NOAA'S VDATUM MODEL WAS USED AND CALIBRATED TO THE PUBLISHED MLLW HEIGHTS OF THE BENCHMARKS ASSOCIATED WITH THE TIDE GAGE SITES SPECIFIED BELOW:
NOAA TIDAL STATION 872-1147 FOR ALL PONCE DE LEON CUTS
- VERTICAL MEASUREMENTS WERE MADE USING AN IMPACT SUBSEA ISA500 SINGLE-BEAM TRANSDUCER. ALL SOUNDINGS SHOWN ARE IN HIGH FREQUENCY.
VESSEL DATE OF SURVEY CUT
JON BOAT "1448" 01 MAY 2024 CUT-3N - 6N SHOAL
- AIDS TO NAVIGATION WERE LOCATED DURING THIS SURVEY.
- THE INFORMATION DEPICTED ON THIS MAP REPRESENTS THE RESULTS OF SURVEYS MADE ON THE DATES INDICATED ABOVE AND CAN ONLY BE CONSIDERED AS INDICATING THE GENERAL CONDITIONS AT THAT TIME. THIS CHART IS SOLELY FOR THE DISTRIBUTION OF AVAILABLE DEPTHS AT THE TIME OF THE SURVEY.
- SURVEY ACCURACY PERFORMANCE STANDARDS, QUALITY CONTROL AND QUALITY ASSURANCE REQUIREMENTS WERE FOLLOWED DURING THIS SURVEY IN ACCORDANCE WITH USACE EM 1110-2-1003, HYDROGRAPHIC SURVEYING, 30 NOV 2013.

LEGEND	
	MONUMENT
	LIGHTED BEACON
	GREEN DAYBEACON
	RED DAYBEACON
	RED LIGHTED BUOY
	GREEN LIGHTED BUOY
	CAN BUOY
	NUN BUOY
	TIDE STAFF
	PROJECT DEPTH



MAP LABEL	AIDS TO NAVIGATION	PLANE COORDINATES		LATITUDE	LONGITUDE
		X	Y		
INFO SIGN	SIGN (0524)	678.830	1723.555	29°04'29.87"	80°55'44.56"
POLE	POLE (0524)	678.079	1723.228	29°04'28.61"	80°55'41.77"
POLE	POLE (0524)	678.835	1723.761	29°04'31.91"	80°55'44.51"
POLE	POLE (0524)	678.771	1723.648	29°04'30.79"	80°55'45.24"
POLE	POLE (0524)	678.477	1724.065	29°04'34.92"	80°55'48.55"



US Army Corps of Engineers
Jacksonville District

SAFETY ON THIS JOB
DEPENDS ON YOU

DEPARTMENT OF THE ARMY
JACKSONVILLE DISTRICT, CORPS OF ENGINEERS
JACKSONVILLE, FLORIDA

Checked By: GHR
Designed By: WRM
Drawn By: WRM
File No: W9358A-000-0004
Date: MAY 2024

24-1204-HAW-DGN
24-1204-HAW-DGN
24-1204-GS-IBRD-DGN
24-1204-HAW-DGN

PNONCE DE LEON INLET
VOLUSIA COUNTY, FLORIDA

**HYDROGRAPHIC EXAM SURVEY FY24
7 & 12-FOOT PROJECT**

STA. 2+00 CUT-4N THRU STA. 3+00 CUT-7N

PLAN

Scale: AS SHOWN

Drawing no.
3 / 3

SHEET 08 OF 11

GRAPHIC SCALE
100' 0 100' 200'

NOTES:
1. REFER TO SURVEY NO. 24-120.
2. SEE SHEET NO. 1 FOR SURVEY NOTES.