

HUDSON RIVER PASCO COUNTY, FLORIDA PROJECT CONDITION SURVEY 6-FOOT PROJECT FY24

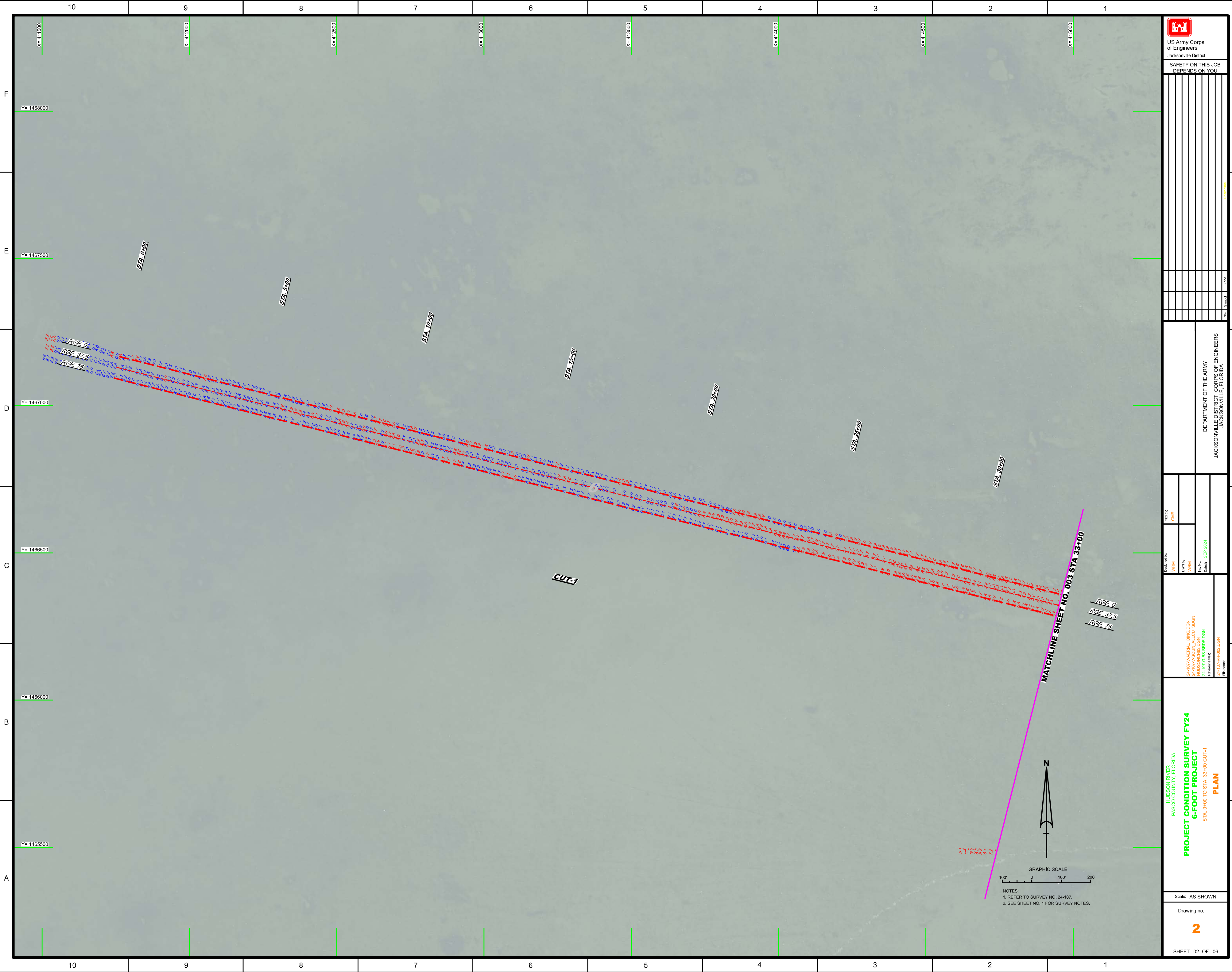
SURVEY NOTES

1. REFER TO SURVEY NO. 24-107.
2. SOUNDINGS ARE IN FEET AND TENTHS AND REFER TO NOAA'S REPORTED MEAN LOWER LOW WATER (MLLW) OF THE 1983-2001 TIDAL EPOCH.
3. TIDAL REDUCTIONS WERE OBTAINED UTILIZING A REAL-TIME KINEMATIC (RTK) GPS AND REFERENCED TO MLLW UTILIZING A HYPACK KINEMATIC TIDE DATUM (KT) MODEL. KTD FILE NAME IS: "SPC-FL-WEST-2010-12-07.KTD".
4. ALL ELEVATIONS ARE BELOW THE CHART DATUM UNLESS PRECEDED BY A (+) SIGN.
5. PLANE COORDINATES ARE BASED ON THE TRANSVERSE MERCATOR PROJECTION FOR THE WEST ZONE OF FLORIDA AND REFERENCED TO NORTH AMERICAN DATUM OF 1983 (NAD83).
6. ALL STATIONING REFERS TO THE CENTERLINE OF THE CHANNEL.
7. THIS SURVEY WAS PERFORMED USING REAL-TIME KINEMATIC (RTK) GPS POSITIONING WITH THE FOLLOWING REFERENCE BASE LOCATION:
REFERENCE BASE LOCATED AT "872 7061 H TIDAL" (PID: DK4716)
8. DEPTHS DEPICTED BY THIS SURVEY ARE REFERENCED TO MLLW, TIDAL EPOCH 1983-2001 AS REPORTED BY THE NATIONAL OCEANIC AND ATMOSPHERIC ADMINISTRATION (NOAA). A MODIFIED VERSION OF NOAA'S VDATUM MODEL WAS USED TO CALIBRATE TO THE PUBLISHED MLLW HEIGHT OF THE BENCHMARK BELOW:
NOAA TIDAL STATION 872-7061 C FOR ENTIRE PROJECT (PID: AL7413)
VERTICAL MEASUREMENTS WERE MADE USING A R2SONIC AND AN ECHO-TRAC E20. ALL SOUNDINGS SHOWN ARE IN HIGH FREQUENCY.
9. AIDS TO NAVIGATION WERE LOCATED DURING THIS SURVEY.
10. THE INFORMATION DEPICTED ON THIS MAP REPRESENTS THE RESULTS OF OF SURVEYS MADE ON THE DATES INDICATED ABOVE AND CAN ONLY BE CONSIDERED AS INDICATING THE GENERAL CONDITIONS AT THAT TIME. THIS CHART IS SOLELY FOR THE DISTRIBUTION OF AVAILABLE DEPTHS AT THE TIME OF THE SURVEY.
11. SURVEY ACCURACY PERFORMANCE STANDARDS, QUALITY CONTROL, AND QUALITY ASSURANCE REQUIREMENTS WERE FOLLOWED DURING THIS SURVEY IN ACCORDANCE WITH USACE EM 1110-2-1003, HYDROGRAPHIC SURVEYING, 30 NOV 2013.

LEGEND	
+BM	BENCHMARK
⚡	LIGHTED BEACON
■	GREEN DAYBEACON
▲	RED DAYBEACON
⚡	RED LIGHTED BUOY
⚡	GREEN LIGHTED BUOY
⚡	CAN BUOY
⚡	NUN BUOY
⚡	TIDE STAFF
8	PROJECT DEPTH

US Army Corps of Engineers
Jacksonville District
SAFETY ON THIS JOB
DEPENDS ON YOU

DEPARTMENT OF THE ARMY JACKSONVILLE DISTRICT, CORPS OF ENGINEERS JACKSONVILLE, FLORIDA	Drawn by: GHR Checked by: WRM Date: SEP 2024	24-107-AERIAL-BINGOLDON 24-107-CHRSNDON 24-107-GS-BINGOLDON 24-107-H40-LDGN	PROJECT CONDITION SURVEY FY24 6-FOOT PROJECT INDEX, LOCATION AND VICINITY MAP	Scale: AS SHOWN Drawing no. 1
SHEET 01 OF 06				



US Army Corps of Engineers Jacksonville District	
SAFETY ON THIS JOB DEPENDS ON YOU	

DEPARTMENT OF THE ARMY
 JACKSONVILLE DISTRICT, CORPS OF ENGINEERS
 JACKSONVILLE, FLORIDA

Checked By: GHR	Designated By: WRM
Drawn By: WRM	Date Plotted: SEP 2024

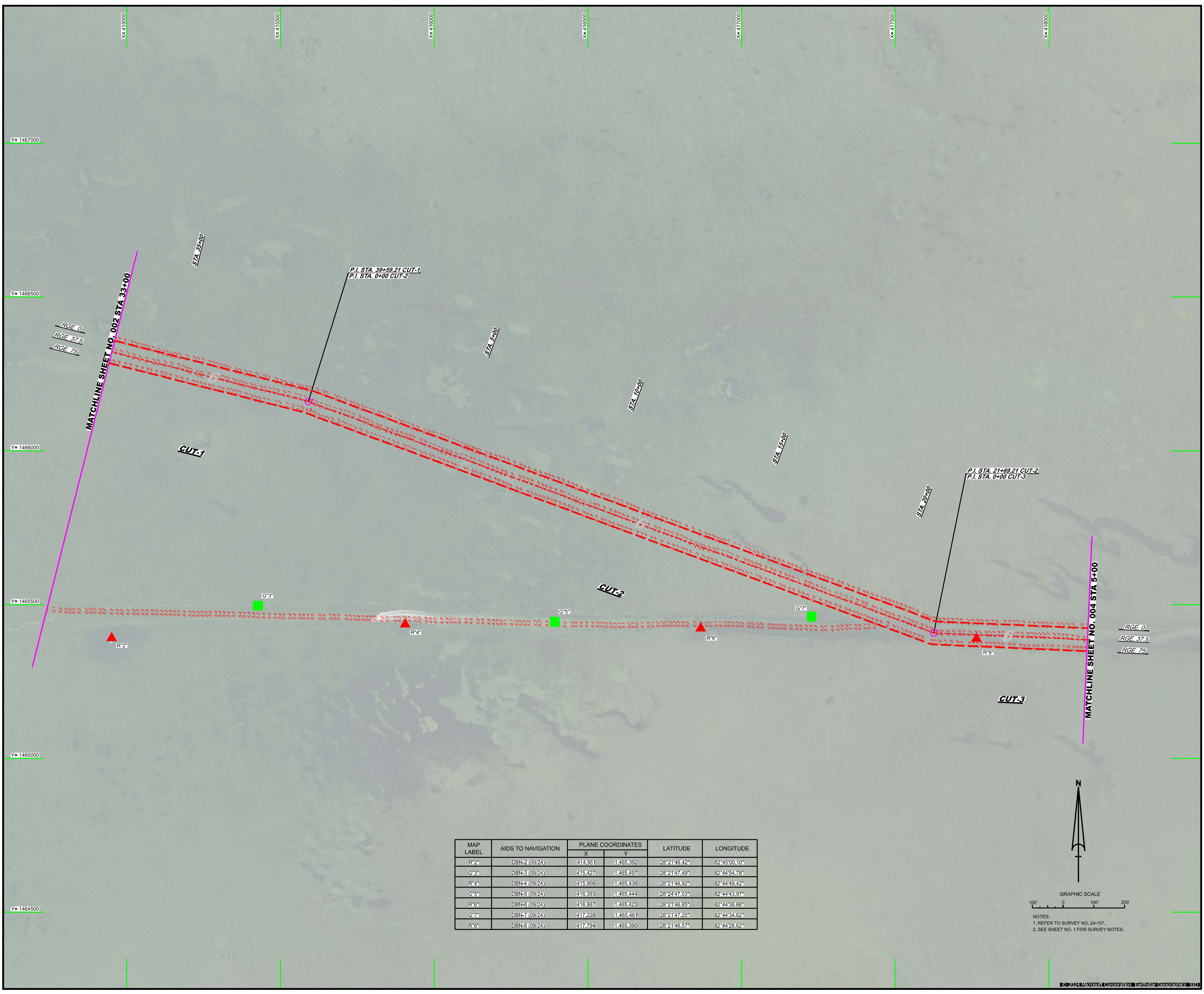
24-107-AERIAL_BINGLDDGN 24-107-AERIAL_OUTSDGN 24-107-GS-ERIALDGN 24-107-H402LDDGN	Reference files: 24-107-H402LDDGN
--	--------------------------------------

HUDSON RIVER
 PASCO COUNTY, FLORIDA
PROJECT CONDITION SURVEY FY24
6-FOOT PROJECT
 STA. 0+00 TO STA. 33+00 CUT-1
PLAN

Scale: AS SHOWN
 Drawing no.
2

GRAPHIC SCALE
 100' 0 100 200'

NOTES:
 1. REFER TO SURVEY NO. 24-107.
 2. SEE SHEET NO. 1 FOR SURVEY NOTES.



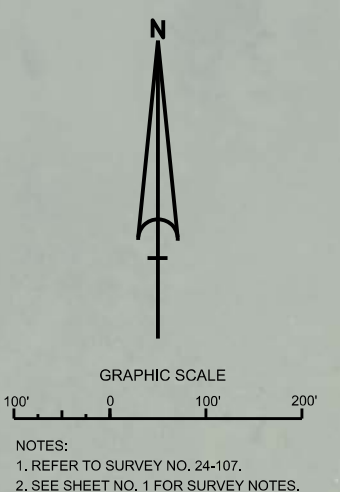
MATCHLINE SHEET NO. 002 STA 33+00

MATCHLINE SHEET NO. 004 STA 5+00

P.I. STA. 39+59.21 CUT-1
P.I. STA. 0+00 CUT-2

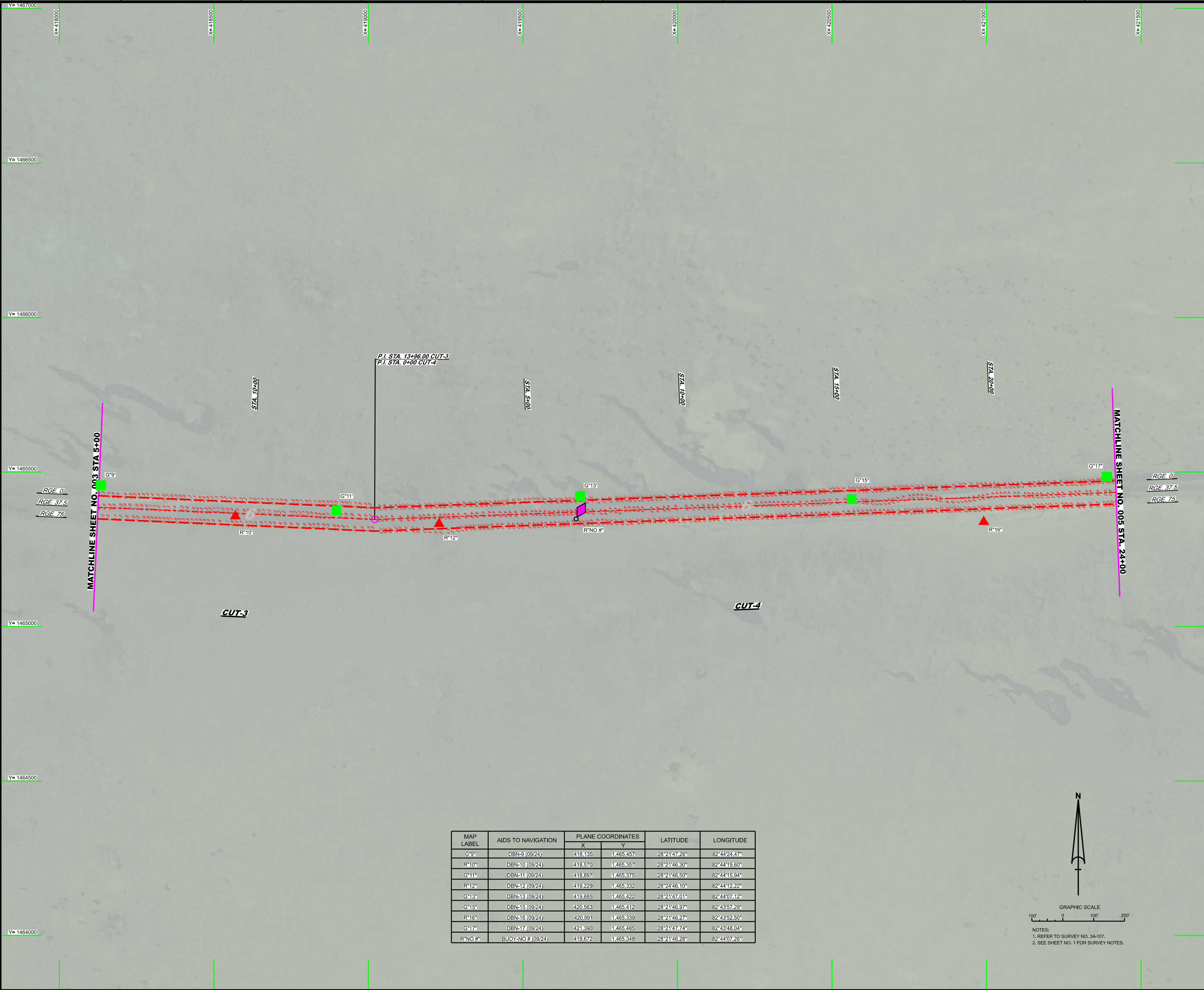
P.I. STA. 21+69.21 CUT-2
P.I. STA. 0+00 CUT-3

MAP LABEL	AIDS TO NAVIGATION	PLANE COORDINATES		LATITUDE	LONGITUDE
		X	Y		
R*2	DBN-2 (09/24)	414,951	1,465,392	28°21'46.42"	82°45'00.10"
G*3	DBN-3 (09/24)	415,427	1,465,497	28°21'47.49"	82°44'54.78"
R*4	DBN-4 (09/24)	415,906	1,465,436	28°21'46.92"	82°44'49.42"
G*5	DBN-5 (09/24)	416,393	1,465,444	28°21'47.03"	82°44'43.97"
R*6	DBN-6 (09/24)	416,867	1,465,423	28°21'46.85"	82°44'38.66"
G*7	DBN-7 (09/24)	417,228	1,465,461	28°21'47.25"	82°44'34.62"
R*8	DBN-8 (09/24)	417,794	1,465,390	28°21'46.57"	82°44'28.62"



F
E
D
C
B
A

10 9 8 7 6 5 4 3 2 1



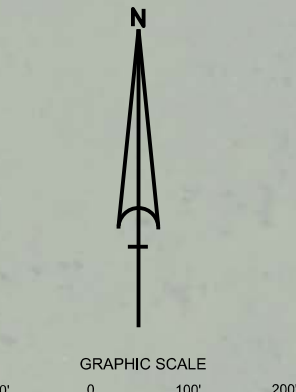
US Army Corps
of Engineers
Jacksonville District
SAFETY ON THIS JOB
DEPENDS ON YOU

DEPARTMENT OF THE ARMY
JACKSONVILLE DISTRICT CORPS OF ENGINEERS
JACKSONVILLE, FLORIDA

Checked By: GHR	Checked By: GHR
Designed By: WRM	Designed By: WRM
DRAWN BY: WRM	DRAWN BY: WRM
File No: 24-107-G-88-BR-BRD-LDN	Date: SEP 2024
Revision 1	24-107-A-ER-BR-BRD-LDN
Revision 2	24-107-H-AV-BR-BRD-LDN
Revision 3	24-107-G-88-BR-BRD-LDN
Revision 4	24-107-G-88-BR-BRD-LDN
Revision 5	24-107-H-000-LDN

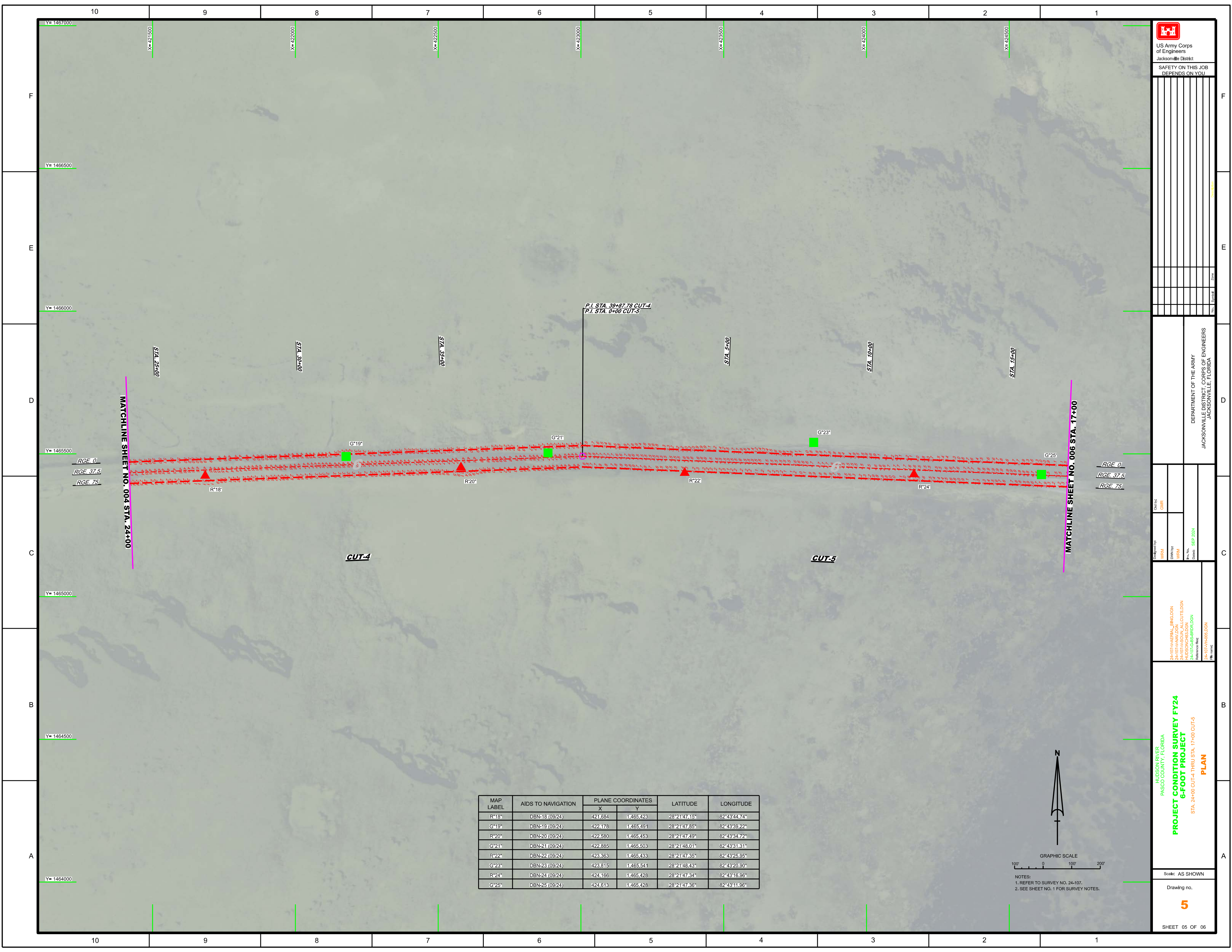
HUDSON RIVER
PASCO COUNTY, FLORIDA
**PROJECT CONDITION SURVEY FY24
6-FOOT PROJECT**
STA. 5+00 CUT-3 THRU STA. 24+00 CUT-4
PLAN

MAP LABEL	AIDS TO NAVIGATION	PLANE COORDINATES		LATITUDE	LONGITUDE
		X	Y		
G*9	DBN-9 (09/24)	418.135	1,465.457	28°21'47.26"	82°44'24.47"
R*10	DBN-10 (09/24)	418.570	1,465.357	28°21'46.30"	82°44'19.60"
G*11	DBN-11 (09/24)	418.897	1,465.375	28°21'46.50"	82°44'15.94"
R*12	DBN-12 (09/24)	419.229	1,465.332	28°24'46.10"	82°44'12.22"
G*13	DBN-13 (09/24)	419.685	1,465.422	28°21'47.01"	82°44'07.12"
G*15	DBN-15 (09/24)	420.563	1,465.412	28°21'46.97"	82°43'57.29"
R*16	DBN-16 (09/24)	420.991	1,465.339	28°21'46.27"	82°43'52.50"
G*17	DBN-17 (09/24)	421.390	1,465.485	28°21'47.74"	82°43'48.04"
R*NO #	BUOY-NO # (09/24)	419.672	1,465.348	28°21'46.28"	82°44'07.26"



NOTES:
1. REFER TO SURVEY NO. 24-107.
2. SEE SHEET NO. 1 FOR SURVEY NOTES.

Scale: AS SHOWN
Drawing no.
4
SHEET 04 OF 06



 US Army Corps of Engineers Jacksonville District	
SAFETY ON THIS JOB DEPENDS ON YOU	

DEPARTMENT OF THE ARMY
JACKSONVILLE DISTRICT, CORPS OF ENGINEERS
JACKSONVILLE, FLORIDA

Checked by: GMR	
Designed by: WRM	
Drawn by: WRM	
File No.: HJ030838.DGN	
Date: SEP 2024	
Reference files: 24-107-A-AERIAL-BING.DGN	

HUDSON RIVER
PASCO COUNTY, FLORIDA
**PROJECT CONDITION SURVEY FY24
6-FOOT PROJECT**
STA. 24+00 CUT-4 THRU STA. 17+00 CUT-5
PLAN

Scale: AS SHOWN

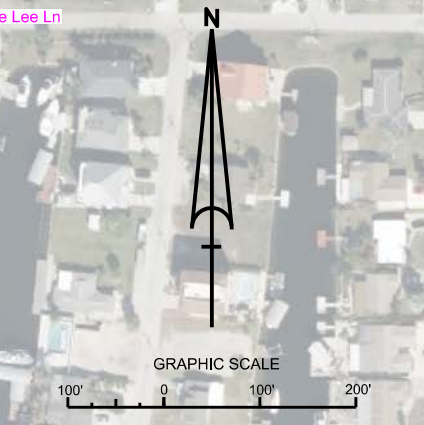
Drawing no.
5
SHEET 05 OF 06

MAP LABEL	AIDS TO NAVIGATION	PLANE COORDINATES		LATITUDE	LONGITUDE
		X	Y		
R*18'	DBN-18 (09/24)	421.684	1465.428	28°21'47.15"	82°43'44.74"
G*19'	DBN-19 (09/24)	422.178	1465.491	28°21'47.85"	82°43'39.22"
R*20'	DBN-20 (09/24)	422.580	1465.453	28°21'47.49"	82°43'34.72"
G*21'	DBN-21 (09/24)	422.885	1465.503	28°21'48.01"	82°43'31.51"
R*22'	DBN-22 (09/24)	423.363	1465.433	28°21'47.35"	82°43'25.95"
G*23'	DBN-23 (09/24)	423.815	1465.541	28°21'48.43"	82°43'20.90"
R*24'	DBN-24 (09/24)	424.166	1465.428	28°21'47.34"	82°43'16.96"
G*25'	DBN-25 (09/24)	424.613	1465.428	28°21'47.36"	82°43'11.96"

GRAPHIC SCALE
100' 0 100 200'

NOTES:
1. REFER TO SURVEY NO. 24-107.
2. SEE SHEET NO. 1 FOR SURVEY NOTES.

MAP LABEL	AIDS TO NAVIGATION	PLANE COORDINATES		LATITUDE	LONGITUDE
		X	Y		
R*26°	DBN-26 (09/24)	425.150	1465.358	28°21'46.71"	82°43'05.95"
G*27°	DBN-27 (09/24)	425.530	1465.426	28°21'47.40"	82°43'01.69"
R*28°	DBN-28 (09/24)	426.197	1465.265	28°21'45.84"	82°42'54.24"
G*29°	DBN-29 (09/24)	426.305	1465.389	28°21'47.08"	82°43'53.02"
R*30°	DBN-30 (09/24)	427.001	1465.702	28°21'50.22"	82°42'45.25"
G*31°	LT-31 (09/24)	427.007	1465.731	28°21'50.50"	82°42'45.18"



NOTES:
 1. REFER TO SURVEY NO. 24-107.
 2. SEE SHEET NO. 1 FOR SURVEY NOTES.

