

OWW / ST. LUCIE RIVER CUTS 1 THRU 4 MARTIN COUNTY, FLORIDA HYDROGRAPHIC EXAM SURVEY FY24 8-FOOT PROJECT

- SURVEY NOTES**
- REFER TO SURVEY NO. 24-090.
 - TIDAL REDUCTIONS WERE OBTAINED UTILIZING A REAL-TIME KINEMATIC (RTK) GPS WITH A KINEMATIC TIDE DATUM (KTD) MODEL. KTD FILE NAME IS: "INDIANRIVER-STLUCIE-MARTIN_20140527.KTD".
 - ALL ELEVATIONS ARE BELOW THE CHART DATUM UNLESS PRECEDED BY A (+) SIGN.
 - PLANE COORDINATES ARE BASED ON THE TRANSVERSE MERCATOR PROJECTION FOR THE EAST ZONE OF FLORIDA AND REFERENCED TO NORTH AMERICAN DATUM OF 1983 (NAD83), BASED ON THE NOAA NATIONAL SPATIAL REFERENCE SYSTEM (NSRS).
 - ALL STATIONING REFERS TO THE CENTERLINE OF THE CHANNEL.
 - THIS SURVEY WAS PERFORMED USING REAL-TIME KINEMATIC (RTK) GPS POSITIONING WITH THE FOLLOWING REFERENCE BASE LOCATION:
REFERENCE BASE LOCATED AT "T 693" FOR ALL CUTS (PID: BBFH83)
 - DEPTHS DEPICTED BY THIS SURVEY ARE REFERENCED TO MLLW, TIDAL EPOCH 1983-2001, AS REPORTED BY THE NATIONAL OCEANIC AND ATMOSPHERIC ADMINISTRATION (NOAA). A MODIFIED VERSION OF NOAA'S 'VDATUM MODEL WAS USED TO CALIBRATE TO THE PUBLISHED MLLW HEIGHTS OF THE BENCH MARK BELOW:
NOAA TIDAL STATION 872-2381 "SNAKE RESET" (PID: AF6967)
 - VERTICAL MEASUREMENTS WERE MADE USING AN EDGETECH 6205 S2 INTERFEROMETRIC SIDE SCAN SYSTEM. ALL SOUNDINGS SHOWN ARE IN HIGH FREQUENCY.
- | VESSEL | DATE OF SURVEY | CUT |
|--------|----------------|-------------------|
| SB-48 | 20 FEB 2024 | OWW CUT-1 |
| SB-48 | 21 FEB 2024 | OWW CUTS 1 THRU 4 |
- AIDS TO NAVIGATION WERE LOCATED DURING THIS SURVEY.
 - THE INFORMATION DEPICTED ON THIS MAP REPRESENTS THE RESULTS OF SURVEYS MADE ON THE DATES INDICATED ABOVE AND CAN ONLY BE CONSIDERED AS INDICATING THE GENERAL CONDITIONS AT THAT TIME. THIS CHART IS SOLELY FOR THE DISTRIBUTION OF AVAILABLE DEPTHS AT THE TIME OF THE SURVEY.
 - SURVEY ACCURACY PERFORMANCE STANDARDS, QUALITY CONTROL, AND QUALITY ASSURANCE REQUIREMENTS WERE FOLLOWED DURING THIS SURVEY IN ACCORDANCE WITH USACE EM 1110-2-1003, HYDROGRAPHIC SURVEYING, 30 NOV 2013.

LEGEND	
	MONUMENT
	LIGHTED BEACON
	GREEN DAYBEACON
	RED DAYBEACON
	RED LIGHTED BUOY
	GREEN LIGHTED BUOY
	CAN BUOY
	NUN BUOY
	TIDE STAFF
	PROJECT DEPTH

US Army Corps of Engineers
Jacksonville District

SAFETY ON THIS JOB
DEPENDS ON YOU

DEPARTMENT OF THE ARMY
JACKSONVILLE DISTRICT, CORPS OF ENGINEERS
JACKSONVILLE, FLORIDA

OWW / ST. LUCIE RIVER
CUTS 1 THRU 4
MARTIN COUNTY, FLORIDA
HYDROGRAPHIC EXAM SURVEY FY24
8-FOOT PROJECT

INDEX, LOCATION AND VICINITY
PLAN

Scale: AS SHOWN

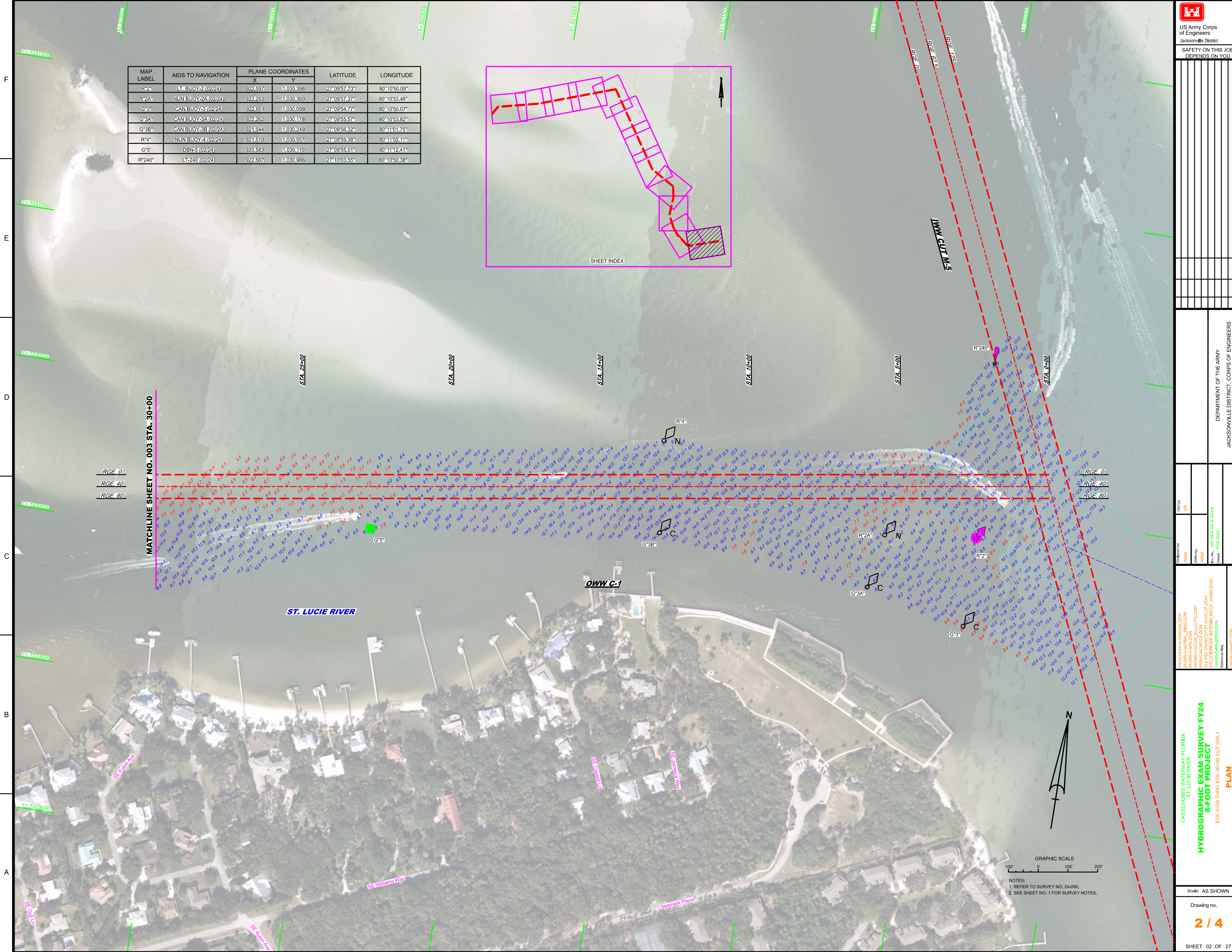
Drawing no.
1 / 4


SHEET 01 OF 27

MAP LABEL	AIDS TO NAVIGATION	PLANE COORDINATES		LATITUDE	LONGITUDE
		X	Y		
R*2	LT BUOY-2 (02/24)	922,597	1,030,398	27°09'57.73"	80°10'50.09"
R*2A	NUN BUOY-2A (02/24)	922,293	1,030,360	27°09'57.37"	80°10'53.46"
G*3	CAN BUOY-3 (02/24)	922,601	1,030,089	27°09'54.77"	80°10'50.07"
G*3A	CAN BUOY-3A (02/24)	922,262	1,030,178	27°09'55.57"	80°10'53.82"
G*3B	CAN BUOY-3B (02/24)	921,544	1,030,249	27°09'56.32"	80°11'01.75"
R*4	NUN BUOY-4 (02/24)	921,510	1,030,557	27°09'59.38"	80°11'02.11"
G*5	DBN-5 (02/24)	920,583	1,030,110	27°09'55.01"	80°11'12.41"
R*240	LT-240 (02/24)	922,567	1,030,986	27°10'03.55"	80°10'50.38"



MATCHLINE SHEET NO. 003 STA. 30+00




US Army Corps of Engineers
Jacksonville District
SAFETY ON THIS JOB DEPENDS ON YOU

DEPARTMENT OF THE ARMY JACKSONVILLE DISTRICT, CORPS OF ENGINEERS JACKSONVILLE, FLORIDA	
<small>Checked By:</small> GR	<small>Checked By:</small> GR
<small>Designed By:</small> WRM	<small>Designed By:</small> WRM
<small>Drawn By:</small> WRM	<small>Drawn By:</small> WRM
<small>Reviewed By:</small> WRM	<small>Reviewed By:</small> WRM
<small>Scale:</small> AS SHOWN	<small>Scale:</small> AS SHOWN
<small>Date:</small> FEB 2024	<small>Date:</small> FEB 2024
HYDROGRAPHIC EXAM SURVEY FY24	
8-FOOT PROJECT	
STA. 0+00 THRU STA. 30+00 CUT OW-1	
PLAN	
<small>Reference files: 24-0900-00000000.DGN 24-0900-00000001.DGN 24-0900-00000002.DGN 24-0900-00000003.DGN 24-0900-00000004.DGN 24-0900-00000005.DGN 24-0900-00000006.DGN 24-0900-00000007.DGN 24-0900-00000008.DGN 24-0900-00000009.DGN 24-0900-00000010.DGN 24-0900-00000011.DGN 24-0900-00000012.DGN 24-0900-00000013.DGN 24-0900-00000014.DGN 24-0900-00000015.DGN 24-0900-00000016.DGN 24-0900-00000017.DGN 24-0900-00000018.DGN 24-0900-00000019.DGN 24-0900-00000020.DGN 24-0900-00000021.DGN 24-0900-00000022.DGN 24-0900-00000023.DGN 24-0900-00000024.DGN 24-0900-00000025.DGN 24-0900-00000026.DGN 24-0900-00000027.DGN 24-0900-00000028.DGN 24-0900-00000029.DGN 24-0900-00000030.DGN 24-0900-00000031.DGN 24-0900-00000032.DGN 24-0900-00000033.DGN 24-0900-00000034.DGN 24-0900-00000035.DGN 24-0900-00000036.DGN 24-0900-00000037.DGN 24-0900-00000038.DGN 24-0900-00000039.DGN 24-0900-00000040.DGN 24-0900-00000041.DGN 24-0900-00000042.DGN 24-0900-00000043.DGN 24-0900-00000044.DGN 24-0900-00000045.DGN 24-0900-00000046.DGN 24-0900-00000047.DGN 24-0900-00000048.DGN 24-0900-00000049.DGN 24-0900-00000050.DGN 24-0900-00000051.DGN 24-0900-00000052.DGN 24-0900-00000053.DGN 24-0900-00000054.DGN 24-0900-00000055.DGN 24-0900-00000056.DGN 24-0900-00000057.DGN 24-0900-00000058.DGN 24-0900-00000059.DGN 24-0900-00000060.DGN 24-0900-00000061.DGN 24-0900-00000062.DGN 24-0900-00000063.DGN 24-0900-00000064.DGN 24-0900-00000065.DGN 24-0900-00000066.DGN 24-0900-00000067.DGN 24-0900-00000068.DGN 24-0900-00000069.DGN 24-0900-00000070.DGN 24-0900-00000071.DGN 24-0900-00000072.DGN 24-0900-00000073.DGN 24-0900-00000074.DGN 24-0900-00000075.DGN 24-0900-00000076.DGN 24-0900-00000077.DGN 24-0900-00000078.DGN 24-0900-00000079.DGN 24-0900-00000080.DGN 24-0900-00000081.DGN 24-0900-00000082.DGN 24-0900-00000083.DGN 24-0900-00000084.DGN 24-0900-00000085.DGN 24-0900-00000086.DGN 24-0900-00000087.DGN 24-0900-00000088.DGN 24-0900-00000089.DGN 24-0900-00000090.DGN 24-0900-00000091.DGN 24-0900-00000092.DGN 24-0900-00000093.DGN 24-0900-00000094.DGN 24-0900-00000095.DGN 24-0900-00000096.DGN 24-0900-00000097.DGN 24-0900-00000098.DGN 24-0900-00000099.DGN 24-0900-00000100.DGN</small>	

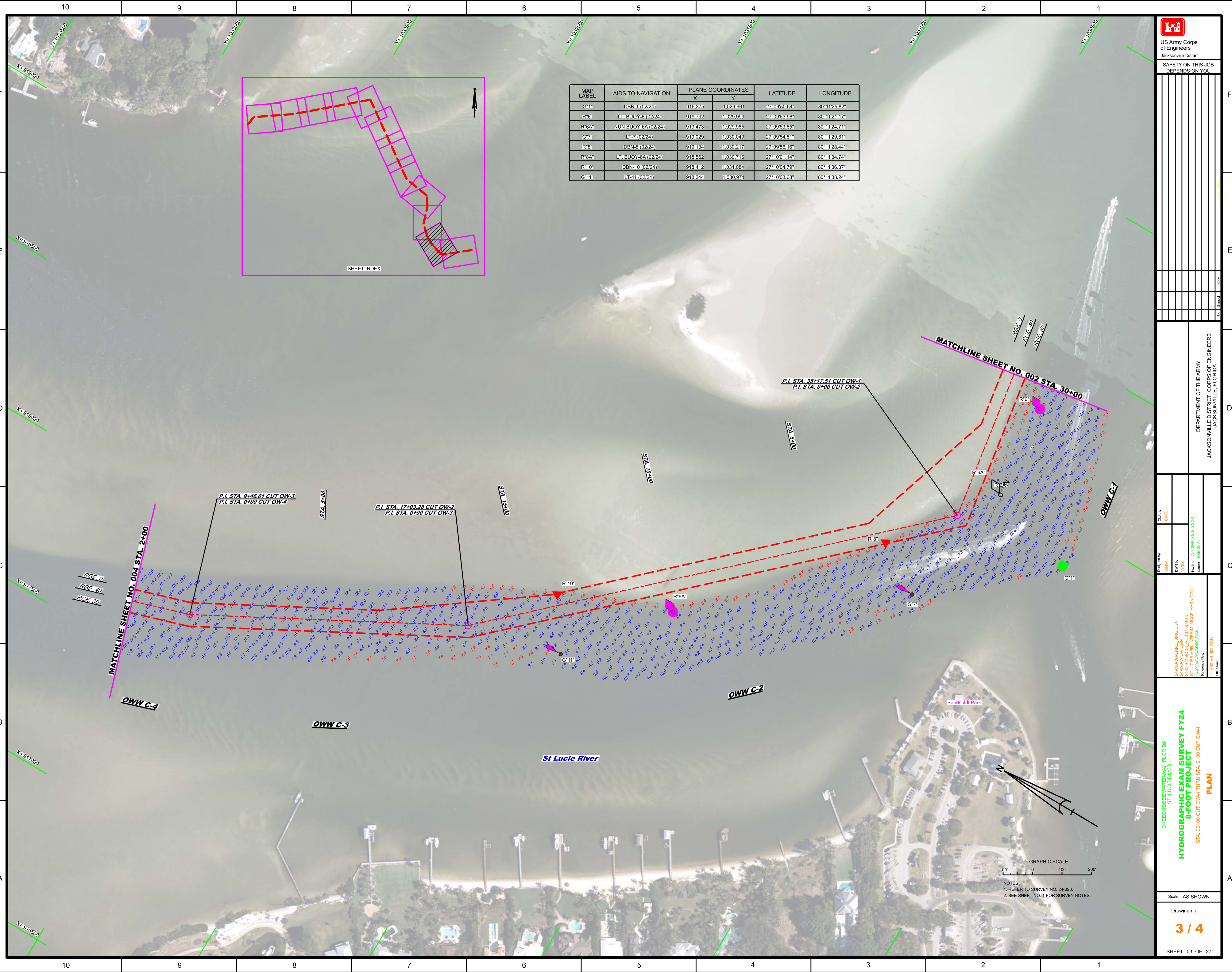
Scale: AS SHOWN

Drawing no.
2 / 4


SHEET 02 OF 27

GRAPHIC SCALE
100' 0 100' 200'

NOTES:
1. REFER TO SURVEY NO. 24-090.
2. SEE SHEET NO. 1 FOR SURVEY NOTES.



MAP LABEL	AIDS TO NAVIGATION	PLANE COORDINATES		LATITUDE	LONGITUDE
		X	Y		
G*1*	DBN-1 (02/24)	919.375	1,029.661	27°09'50.64"	80°11'25.82"
R*6*	LT. BUOY-6 (02/24)	919.792	1,029.999	27°09'53.96"	80°11'21.17"
R*6A*	NUN BUOY-6A (02/24)	919.473	1,029.965	27°09'53.65"	80°11'24.71"
G*7*	LT-7 (02/24)	919.029	1,030.049	27°09'54.51"	80°11'29.61"
R*8*	DBN-8 (02/24)	919.184	1,030.217	27°09'56.16"	80°11'28.44"
R*8A*	LT. BUOY-8A (02/24)	918.562	1,030.716	27°10'01.14"	80°11'34.74"
R*10*	DBN-10 (02/24)	918.412	1,031.084	27°10'04.79"	80°11'36.37"
G*11*	LT-11 (02/24)	918.244	1,030.971	27°10'03.66"	80°11'38.24"



US Army Corps of Engineers
Jacksonville District

SAFETY ON THIS JOB
DEPENDS ON YOU

DEPARTMENT OF THE ARMY
JACKSONVILLE DISTRICT, CORPS OF ENGINEERS
JACKSONVILLE, FLORIDA

Client: GHR

Contract No: W19CEB-18-0004

Project: ST LUCIE RIVER HYDROGRAPHIC EXAM SURVEY FY24

Sheet: STA. 30+00 CUT OW-1 THRU STA. 2+00 CUT OW-4

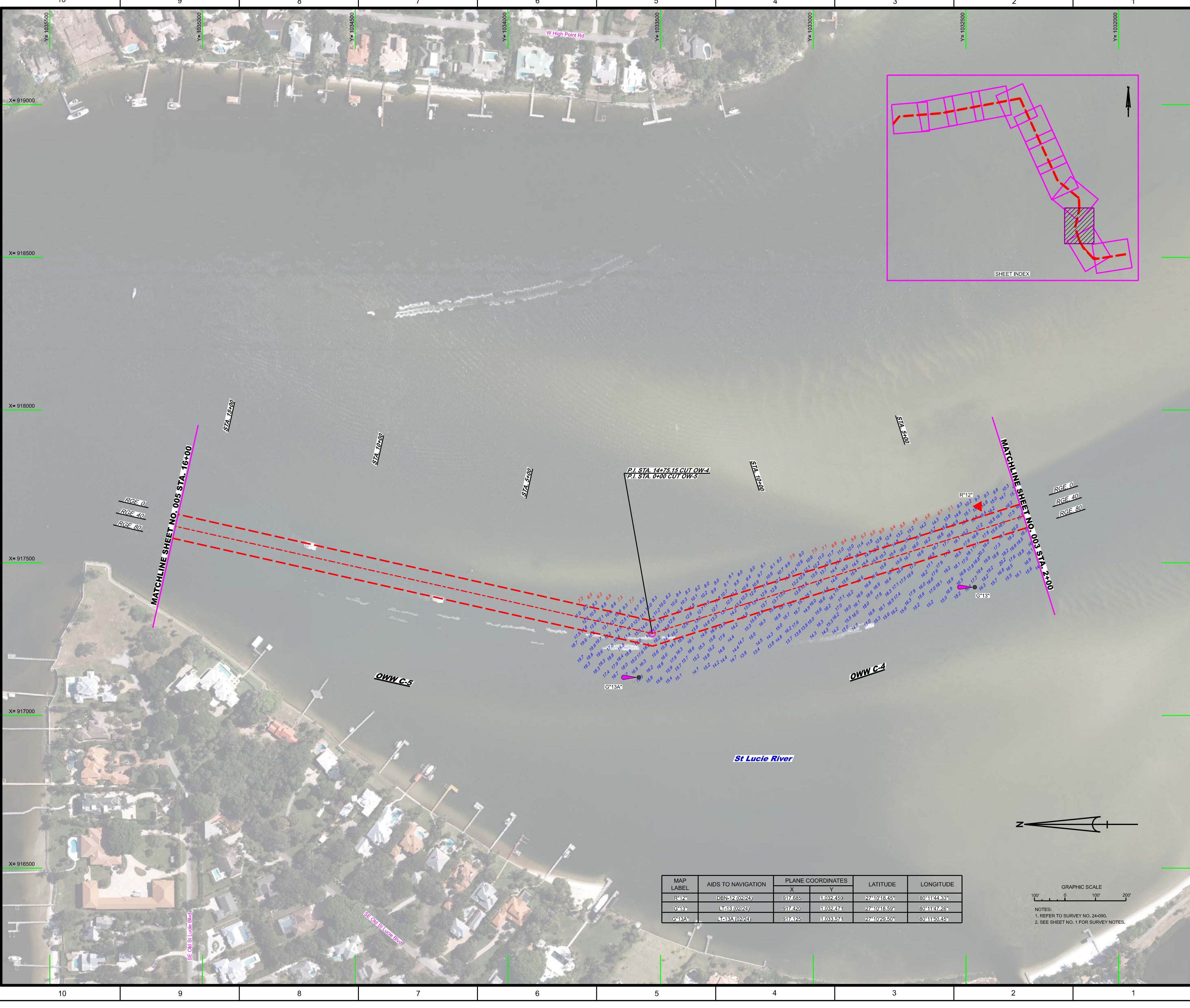
Scale: AS SHOWN

Drawing no. **3 / 4**

SHEET 03 OF 27

GRAPHIC SCALE
0 100' 200'

NOTES:
1. REFER TO SURVEY NO. 24-090.
2. SEE SHEET NO. 1 FOR SURVEY NOTES.



MAP LABEL	AIDS TO NAVIGATION	PLANE COORDINATES		LATITUDE	LONGITUDE
		X	Y		
R12	DBN12 (02/24)	917685	11032459	27°10'18.45"	80°11'44.83"
G418	LS18 (02/24)	917420	11032474	27°10'18.59"	80°11'47.26"
G418A	LS18A (02/24)	917425	11033574	27°10'23.50"	80°11'50.45"

GRAPHIC SCALE
 100' 0 100' 200'
 NOTES:
 1. REFER TO SURVEY NO. 24-090.
 2. SEE SHEET NO. 1 FOR SURVEY NOTES.