

| X | AIDS TO NAVIGATION | PLANE COORDINATES | | LATITUDE | LONGITUDE |
|-----------|--------------------|-------------------|---------|--------------|--------------|
| | | X | Y | | |
| R*6A | DBN-5A (01/24) | 942,209 | 571,802 | 25°54'14.93" | 80°07'47.74" |
| G*7 | CAN BUOY-7 (01/24) | 942,295 | 571,608 | 25°54'13.00" | 80°07'46.50" |
| R*8 | DBN-8 (01/24) | 841,260 | 570,359 | 25°54'00.70" | 80°07'57.92" |
| G*9 | LT-9 (01/24) | 941,276 | 570,132 | 25°53'58.35" | 80°07'57.76" |
| INFO SIGN | SIGN (01/24) | 941,308 | 569,990 | 25°53'57.04" | 80°07'57.43" |
| INFO SIGN | SIGN (01/24) | 942,837 | 572,257 | 25°54'19.40" | 80°07'40.51" |

US Army Corps of Engineers
Jacksonville District

**SAFETY ON THIS JOB
DEPENDS ON YOU**

Call by: GHR

Designed by: WRM

DWN by: WRM

File No.: WJ2524-000-0004

Date: JAN 2024

XXXXXXXXXXXXXXXXXXXX
JACKSONVILLE TO MIAMI, FLORIDA
DADE COUNTY
HYDROGRAPHIC EXAM SURVEY FY24
10-FOOT PROJECT
STA. 10+00 THRU STA. 43+00 CUT DA-9
PLAN

DEPARTMENT OF THE ARMY
JACKSONVILLE DISTRICT, CORPS OF ENGINEERS
JACKSONVILLE, FLORIDA

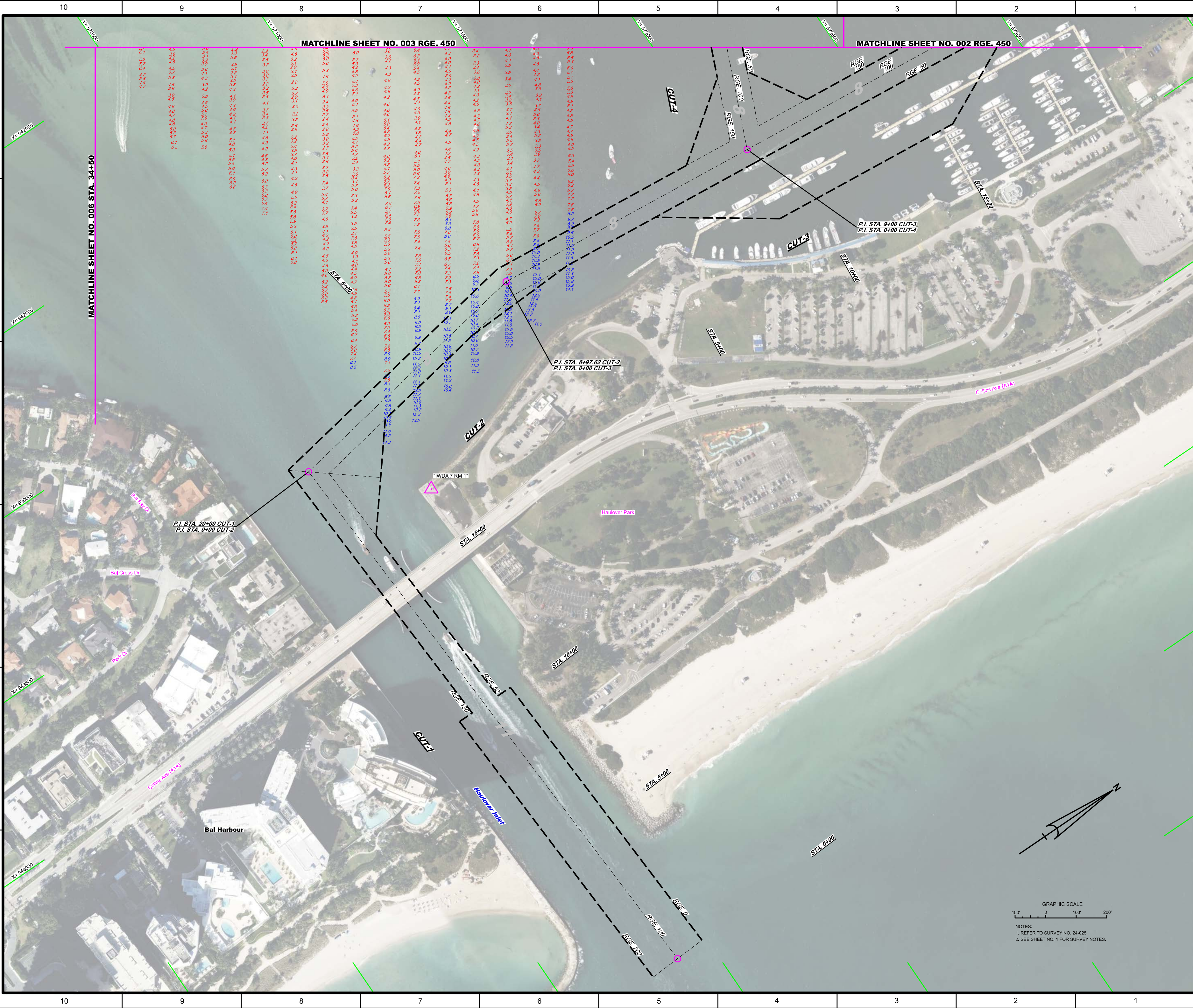
Scale: AS SHOWN


Drawing No. **3 / 5**

SHEET 03 OF 08

GRAPHIC SCALE
100' 0 100' 200'

NOTES:
1. REFER TO SURVEY NO. 24-074.
2. SEE SHEET NO. 1 FOR SURVEY NOTES.





US Army Corps of Engineers
Jacksonville District

**SAFETY ON THIS JOB
DEPENDS ON YOU**

DEPARTMENT OF THE ARMY
JACKSONVILLE DISTRICT, CORPS OF ENGINEERS
JACKSONVILLE, FLORIDA

| | | | |
|--------------------|-----------------------|---|---|
| Checked By: GHR | Designated By: WRM | 24-074-HAULOVER_BROLDON BAKERS HAULOVER INLET CANAL DRAIN 24-074-GS-BROLDON_DJLGN Reference File: 24-025-HAULOVER | File No.: WJ25EP-000-0000 Date: JAN 2024 |
|--------------------|-----------------------|---|---|

INTRACOSTAL WATERWAY / BAKERS HAULOVER INLET
JACKSONVILLE TO MIAMI, FLORIDA
DADE COUNTY
10-FOOT PROJECT
RGE 450 CUT DA-9 TO SHORELINE STA 0+00 CUT-1 THRU
STA 15+55.48 CUT-3 AND STA 0+00 THRU STA 3+11.14 CUT-4
PLAN

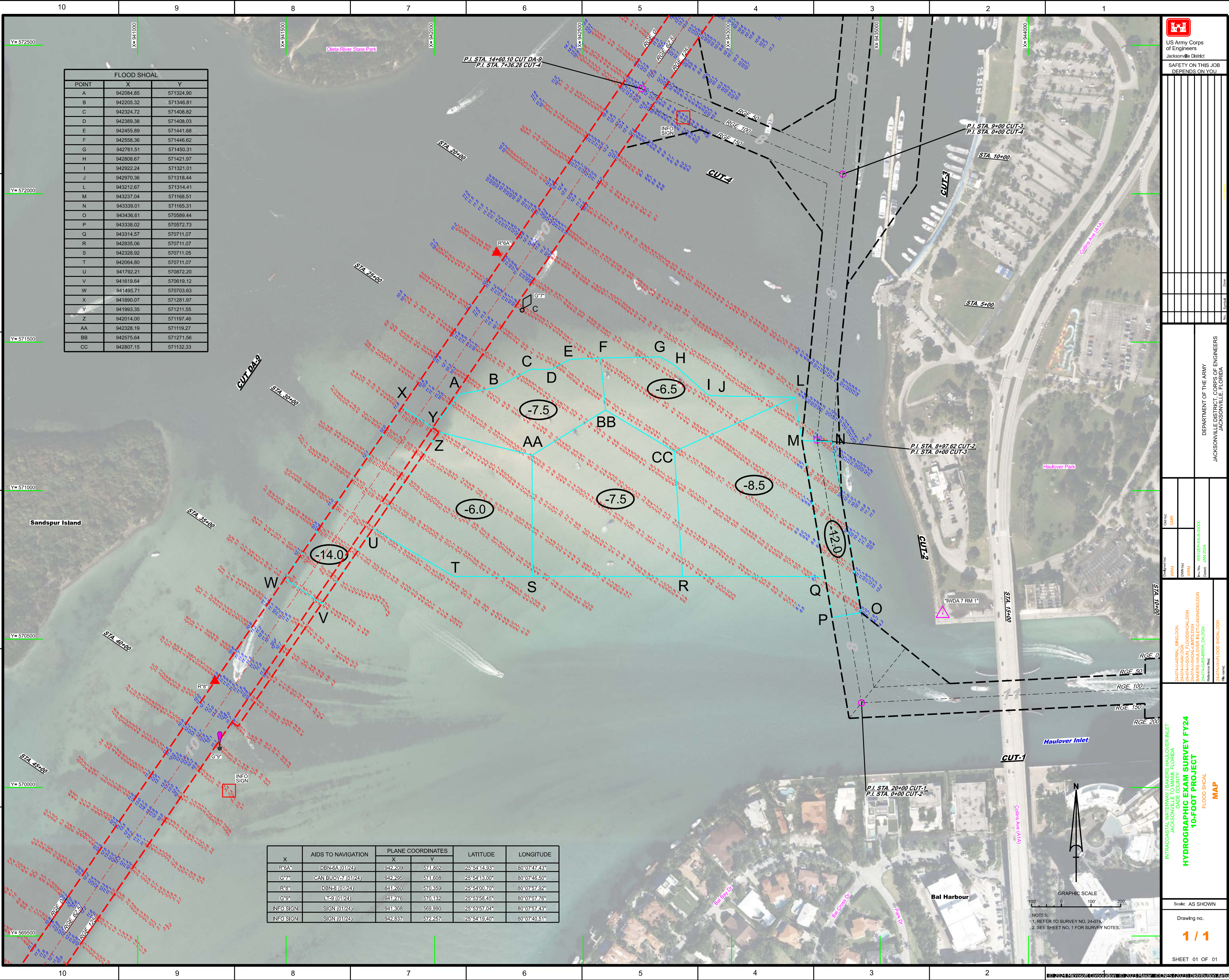
Scale: AS SHOWN

Drawing no.
4 / 5

SHEET 04 OF 08

GRAPHIC SCALE
100' 0 100' 200'

NOTES:
1. REFER TO SURVEY NO. 24-025.
2. SEE SHEET NO. 1 FOR SURVEY NOTES.



| FLOOD SHOAL | | |
|-------------|-----------|-----------|
| POINT | X | Y |
| A | 942084.85 | 571324.90 |
| B | 942205.32 | 571346.81 |
| C | 942324.72 | 571408.82 |
| D | 942389.38 | 571408.03 |
| E | 942455.89 | 571441.68 |
| F | 942558.36 | 571446.62 |
| G | 942761.51 | 571450.31 |
| H | 942808.67 | 571421.97 |
| I | 942922.24 | 571321.01 |
| J | 942970.36 | 571318.44 |
| L | 943212.67 | 571314.41 |
| M | 943237.04 | 571168.51 |
| N | 943339.01 | 571165.31 |
| O | 943436.61 | 570589.44 |
| P | 943338.02 | 570572.73 |
| Q | 943314.57 | 570711.07 |
| R | 942835.06 | 570711.07 |
| S | 942328.92 | 570711.05 |
| T | 942064.80 | 570711.07 |
| U | 941792.21 | 570872.20 |
| V | 941619.64 | 570619.12 |
| W | 941495.71 | 570703.63 |
| X | 941890.07 | 571281.97 |
| Y | 941993.35 | 571211.55 |
| Z | 942014.00 | 571197.46 |
| AA | 942328.19 | 571119.27 |
| BB | 942575.64 | 571271.56 |
| CC | 942807.15 | 571132.33 |

| X | AIDS TO NAVIGATION | PLANE COORDINATES | | LATITUDE | LONGITUDE |
|-----------|--------------------|-------------------|---------|--------------|--------------|
| | | X | Y | | |
| R*6A | DBN-8A (01/24) | 942.209 | 571.802 | 25°54'14.93" | 80°07'47.43" |
| G*7 | CAN BUOY-7 (01/24) | 942.295 | 571.608 | 25°54'13.00" | 80°07'46.50" |
| R*8 | DBN-8 (01/24) | 841.260 | 570.359 | 25°54'00.70" | 80°07'57.92" |
| G*9 | LT-9 (01/24) | 941.276 | 570.132 | 25°53'58.45" | 80°07'57.76" |
| INFO SIGN | SIGN (01/24) | 941.808 | 569.990 | 25°53'57.04" | 80°07'57.43" |
| INFO SIGN | SIGN (01/24) | 942.837 | 572.257 | 25°54'19.40" | 80°07'40.51" |

US Army Corps of Engineers
Jacksonville District
SAFETY ON THIS JOB
DEPENDS ON YOU

DEPARTMENT OF THE ARMY
JACKSONVILLE DISTRICT, CORPS OF ENGINEERS
JACKSONVILLE, FLORIDA

Checked By:

GHR

Designed By:

WRM

Drawn By:

WRM

Project No.:

W19258-00000000

Contract:

JAN 2024

Scale:

AS SHOWN

Drawing no.:

1/1

SHEET 01 OF 01

Title:

INTRACOASTAL WATERWAY / BAKERS HAULOVER INLET
JACKSONVILLE TO MIAMI, FLORIDA
DADE COUNTY
HYDROGRAPHIC EXAM SURVEY FY24
10-FOOT PROJECT
FLOOD SHOAL
MAP

Notes:

1. REFER TO SURVEY NO. 24-074.
2. SEE SHEET NO. 1 FOR SURVEY NOTES.