

MAP LABEL	AIDS TO NAVIGATION	PLANE COORDINATES		LATITUDE	LONGITUDE
		X	Y		
R°58"	DBN-58 (07/23)	955,995	955,119	26°57'30.01"	80°04'46.44"
G°59"	LT-59 (07/23)	956,284	954,766	26°57'26.50"	80°04'43.28"
R°60"	DBN-60 (07/23)	956,110	954,424	26°57'23.12"	80°04'45.23"



SAFETY ON THIS JOB
DEPENDS ON YOU

[illegible]

DEPARTMENT OF THE ARMY
JACKSONVILLE DISTRICT, CORPS OF ENGINEERS

[illegible]

INTRACOASTAL WATERWAY
JACKSONVILLE TO MIAMI, FLORIDA
PALM BEACH COUNTY

HYDROGRAPHIC EXAM SURVEY FY23
10-FOOT PROJECT

STA. 59+00 CUT P-1 THRU STA. 11+00 CUT P-2

PLAN

Scale: AS SHOWN

Drawing no.

4 / 6

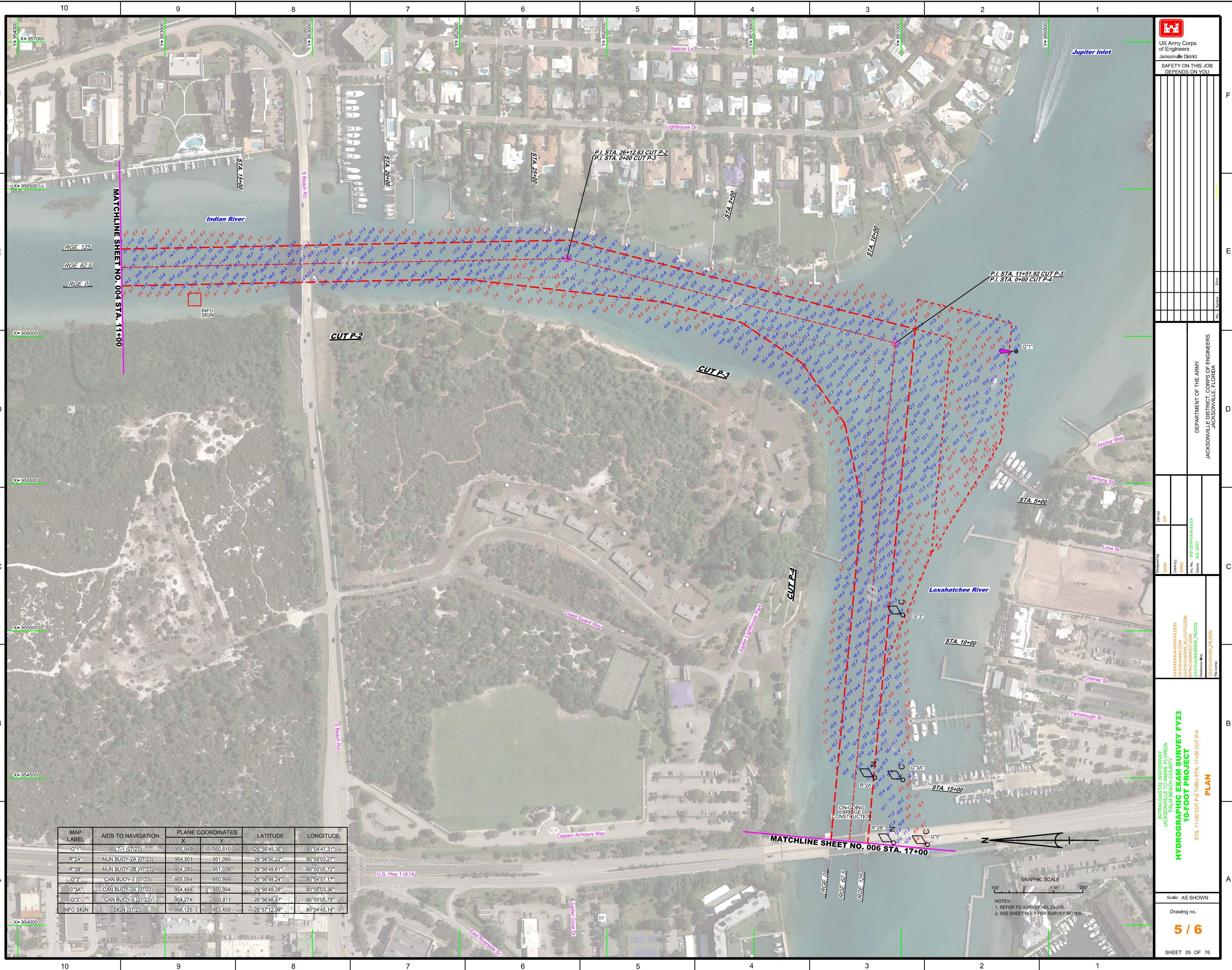
SHEET 04 OF 76

GRAPHIC SCALE

100' 0 100' 200'

NOTES:

1. REFER TO SURVEY NO. 23-210.
2. SEE SHEET NO. 1 FOR SURVEY NOTES.



MAP LABEL	AIDS TO NAVIGATION	PLANE COORDINATES		LATITUDE	LONGITUDE
		X	Y		
G*1	LT-1 (07/23)	955,949	950,610	26°56'45.36"	80°04'47.31"
R*2A	NUN BUOY-2A (07/23)	954,501	951,090	26°56'50.22"	80°05'03.27"
R*2B	NUN BUOY-2B (07/23)	954,280	951,026	26°56'49.61"	80°05'05.72"
G*3	CAN BUOY-3 (07/23)	955,054	950,995	26°56'49.24"	80°04'57.17"
G*3A	CAN BUOY-3A (07/23)	954,494	950,994	26°56'49.28"	80°05'03.36"
G*5	CAN BUOY-5 (07/23)	954,274	950,911	26°56'46.47"	80°05'05.79"
INFO SIGN	SIGN (07/23)	956,125	953,400	26°57'12.98"	80°04'45.14"

[illegible]

XXXXXXXXXX-XXXXXX.DGN	XXXXXXXXXX	GR
23-210-NAV.DGN	DIN 1P	
23-210-ASQU/ALLOUT.DGN	WRM	
23-210-ASQU/ALLOUT.DGN	File No.	W91ZEP-96-XXXXXX
23-210-AS-HDR_BLDGN	Dated:	JULY 2023
23-210-AS-HDR_BLDGN	Reference: This	
23-210-AS-HDR_BLDGN	File name	

INTRACOASTAL WATERWAY
JACKSONVILLE TO MIAMI, FLORIDA
PALM BEACH COUNTY

HYDROGRAPHIC EXAM SURVEY FY23

10-FOOT PROJECT

STA. 11+00 CUT P-2 THRU STA. 17+00 CUT P-4

PLAN

Scale: AS SHOWN

Drawing no.

5 / 6

SHEET 05 OF 76

