

10 9 8 7 6 5 4 3 2 1

F

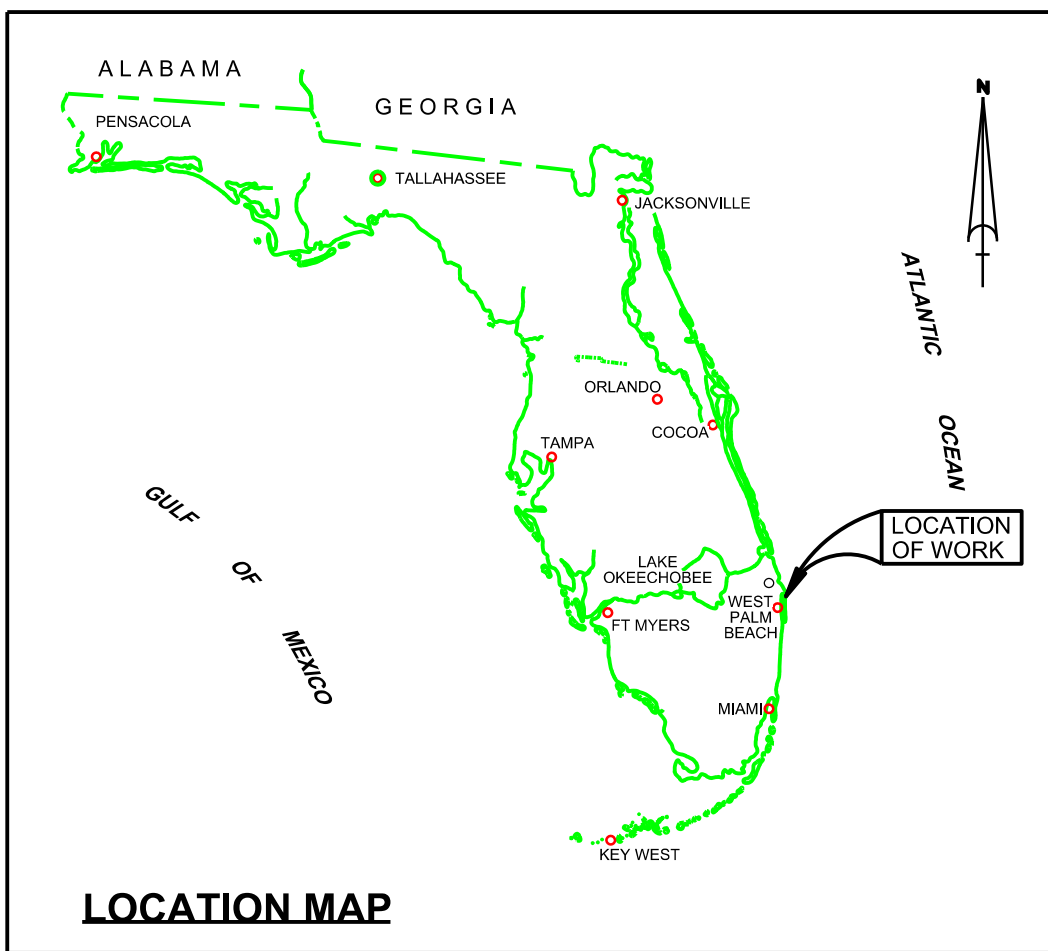
E

D

C

B

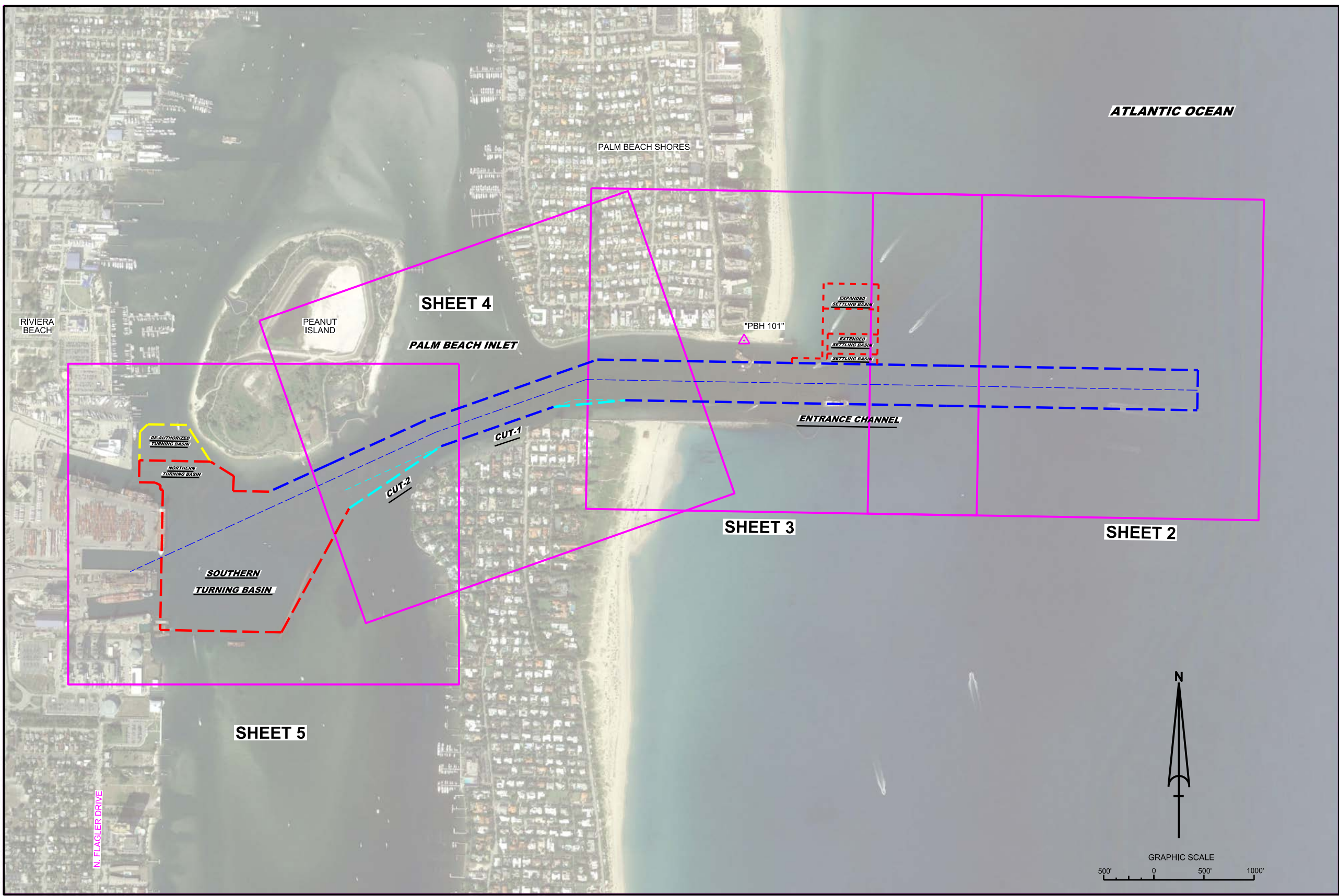
A



# PALM BEACH HARBOR, FLORIDA JUNE HYDROGRAPHIC EXAM SURVEY FY23 25, 33, 35, 37 & 39-FOOT PROJECT

US Army Corps of Engineers  
 Jacksonville District  
 SAFETY ON THIS JOB DEPENDS ON YOU

DEPARTMENT OF THE ARMY  
 JACKSONVILLE DISTRICT, CORPS OF ENGINEERS  
 JACKSONVILLE, FLORIDA



**SURVEY NOTES**

- REFER TO SURVEY NO. 23-163.
- SOUNDINGS ARE IN FEET AND TENTHS AND REFER TO NOAA'S REPORTED MEAN LOWER LOW WATER (MLLW) OF THE 1983-2001 TIDAL EPOCH.
- TIDAL REDUCTIONS WERE OBTAINED UTILIZING A REAL-TIME KINEMATIC (RTK) GPS AND REFERENCED TO MLLW UTILIZING A HYPACK KINEMATIC TIDE DATUM (KTD) MODEL. KTD FILE NAME IS: "PALMBEACH\_2018 05 03.KTD".
- ALL ELEVATIONS ARE BELOW THE CHART DATUM UNLESS PRECEDED BY A (+) SIGN.
- PLANE COORDINATES ARE BASED ON THE TRANSVERSE MERCATOR PROJECTION FOR THE EAST ZONE OF FLORIDA AND REFERENCED TO THE CURRENT REALIZATION OF THE NORTH AMERICAN DATUM OF 1983 (NAD83), BASED ON THE NOAA NATIONAL SPATIAL REFERENCE SYSTEM (NSRS).
- ALL STATIONING REFERS TO THE CENTERLINE OF THE CHANNEL.
- THIS SURVEY WAS PERFORMED USING REAL-TIME KINEMATIC (RTK) GPS POSITIONING WITH THE FOLLOWING REFERENCE BASE LOCATION:  
 REFERENCE BASE LOCATED AT "PBH 101" (OPUS PID: BBN27)  
 TIDE STAFF LOCATED FROM "COE A 310 RESET" (PID: BBN25)
- DEPTHS DEPICTED BY THIS SURVEY ARE REFERENCED TO MLLW, TIDAL EPOCH 1983-2001 AS REPORTED BY THE NATIONAL OCEANIC AND ATMOSPHERIC ADMINISTRATION (NOAA). A MODIFIED VERSION OF NOAA'S VDATUM MODEL WAS USED TO CALIBRATE TO THE PUBLISHED MLLW HEIGHT OF THE BENCHMARK ASSOCIATED BELOW:  
 NOAA TIDAL STATION 872-2588, PORT OF W. PALM BEACH, LAKE WORTH (PID: BBN25)  
 VERTICAL MEASUREMENTS WERE MADE USING AN ECHOTRAC E20 SINGLE-BEAM TRANSDUCER OPERATING AT 28 AND 200 KHZ AND AN EDGETECH 6205 MULTI-BEAM SYSTEM OPERATING AT 550 KHZ. ALL SOUNDINGS SHOWN ARE IN HIGH FREQUENCY.
- AIDS TO NAVIGATION WERE LOCATED DURING THIS SURVEY.
- THE INFORMATION DEPICTED ON THIS MAP REPRESENTS THE RESULTS OF SURVEYS MADE ON THE DATES INDICATED ABOVE AND CAN ONLY BE CONSIDERED AS INDICATING THE GENERAL CONDITIONS AT THAT TIME. THIS CHART IS SOLELY FOR THE DISTRIBUTION OF AVAILABLE DEPTHS AT THE TIME OF THE SURVEY.
- SURVEY ACCURACY PERFORMANCE STANDARDS, QUALITY CONTROL, AND QUALITY ASSURANCE REQUIREMENTS WERE FOLLOWED DURING THIS SURVEY IN ACCORDANCE WITH USACE EM 1110-2-1003, HYDROGRAPHIC SURVEYING, 30 NOV 2013.

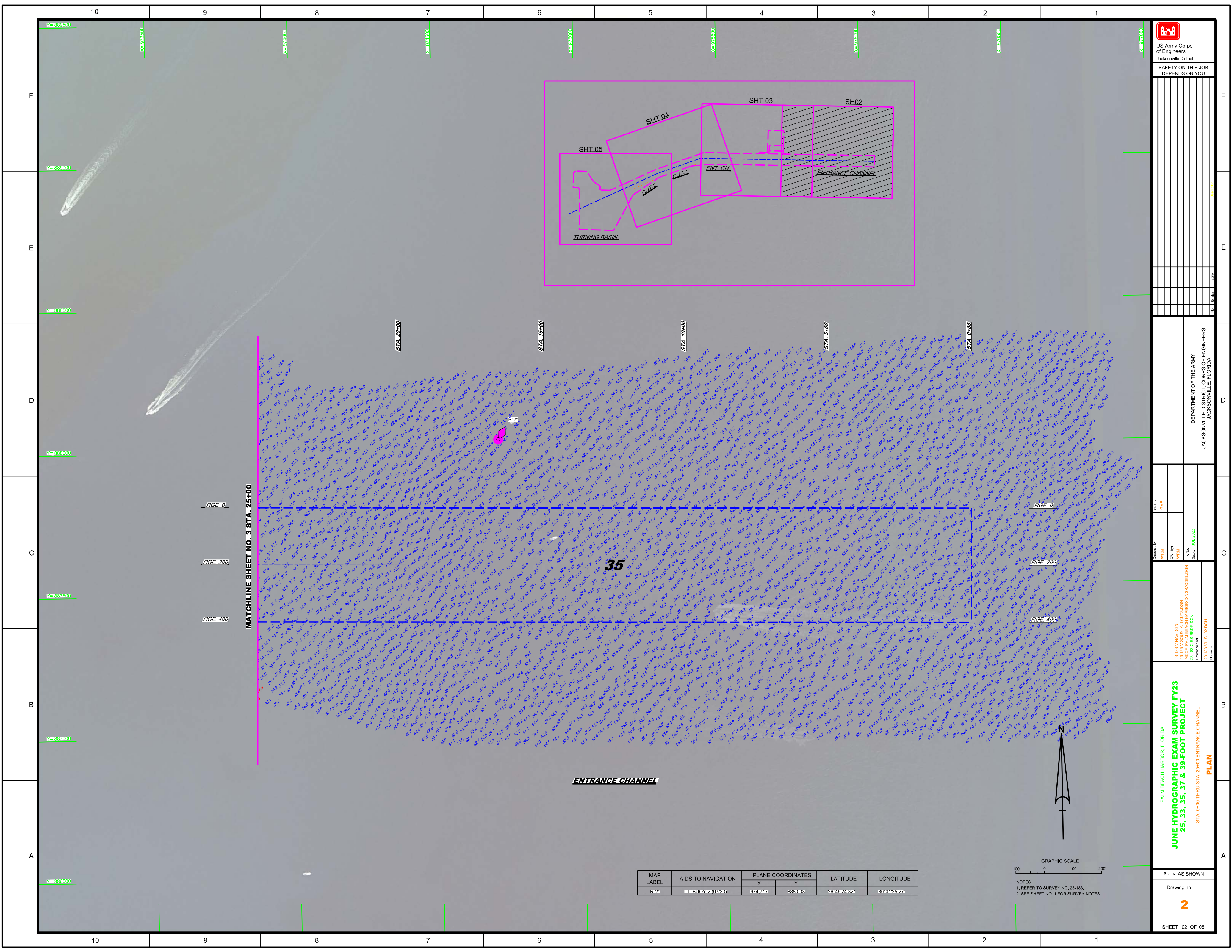
LEGEND	
▲	MONUMENT
⚓	LIGHTED BEACON
■	GREEN DAYBEACON
▲	RED DAYBEACON
●	RED LIGHTED BUOY
●	GREEN LIGHTED BUOY
⚓	CAN BUOY
⚓	NUN BUOY
⚓	TIDE STAFF
8	PROJECT DEPTH

PALM BEACH HARBOR, FLORIDA  
**JUNE HYDROGRAPHIC EXAM SURVEY FY23  
 25, 33, 35, 37 & 39-FOOT PROJECT**  
 INDEX, LOCATION AND VICINITY  
 MAP

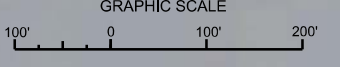
Scale: AS SHOWN  
 Drawing no. 1  
 SHEET 01 OF 05

10 9 8 7 6 5 4 3 2 1



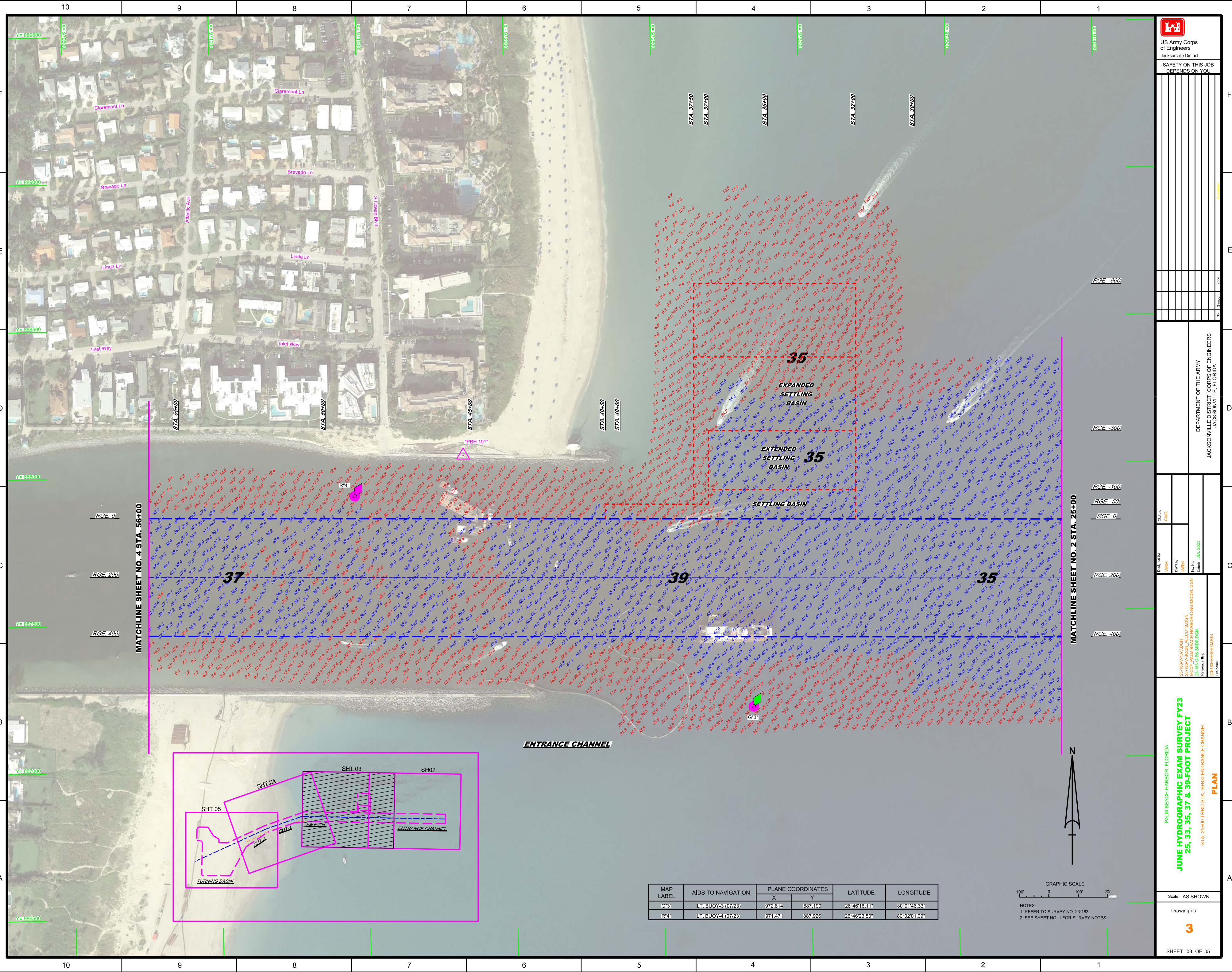


MAP LABEL	AIDS TO NAVIGATION	PLANE COORDINATES		LATITUDE	LONGITUDE
		X	Y		
R-2	LT. BUOY-2 (07/23)	974.717	888.033	26°46'24.32"	80°01'25.27"



NOTES:  
1. REFER TO SURVEY NO. 23-183.  
2. SEE SHEET NO. 1 FOR SURVEY NOTES.



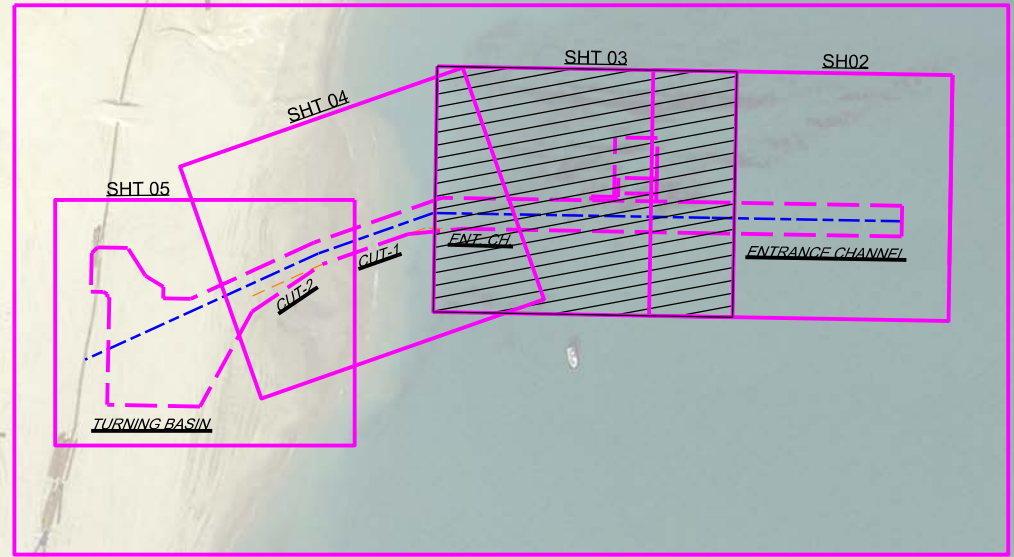


MATCHLINE SHEET NO. 4 STA. 56+00

MATCHLINE SHEET NO. 2 STA. 25+00

RGE. 0  
RGE. 200  
RGE. 400

RGE. -800  
RGE. -300  
RGE. -100  
RGE. -50  
RGE. 0  
RGE. 200  
RGE. 400



MAP LABEL	AIDS TO NAVIGATION	PLANE COORDINATES		LATITUDE	LONGITUDE
		X	Y		
G*3	BUOY G3 (0723)	972.614	887.190	26°46'16.11"	80°01'46.33"
R*4	BUOY R4 (0723)	974.471	887.926	26°46'23.50"	80°02'01.09"



NOTES:  
1. REFER TO SURVEY NO. 23-183.  
2. SEE SHEET NO. 1 FOR SURVEY NOTES.

DEPARTMENT OF THE ARMY  
JACKSONVILLE DISTRICT, CORPS OF ENGINEERS  
JACKSONVILLE, FLORIDA

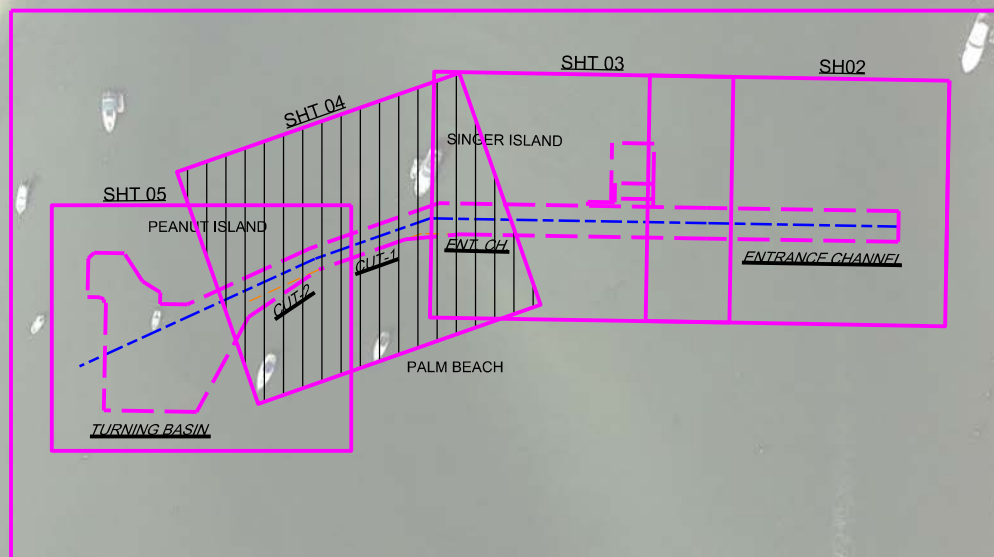
Designed by: WRM  
Checked by: GHR  
Drawn by: WRM  
Reviewed by: WRM  
Date: JUL 2023

PALM BEACH HARBOR, FLORIDA  
**JUNE HYDROGRAPHIC EXAM SURVEY FY23**  
25, 33, 35, 37 & 39-FOOT PROJECT  
STA. 25+00 THRU STA. 36+00 ENTRANCE CHANNEL  
PLAN

Scale: AS SHOWN  
Drawing no. **3**  
SHEET 03 OF 05



MAP LABEL	AIDS TO NAVIGATION	PLANE COORDINATES		LATITUDE	LONGITUDE
		X	Y		
R*6"	LT. BUOY-6 (07/23)	970,548	887,901	26°46'23.32"	80°02'11.27"
G*7"	LT. BUOY-7 (07/23)	969,903	887,368	26°46'18.09"	80°02'18.43"
R*8"	DBN-8 (07/23)	969,326	887,601	26°46'20.45"	80°02'24.78"
G*9"	LT-9 (07/23)	968,812	886,902	26°46'13.56"	80°02'30.51"
R*10"	DBN-10 (07/23)	968,208	887,176	26°46'16.32"	80°02'37.15"



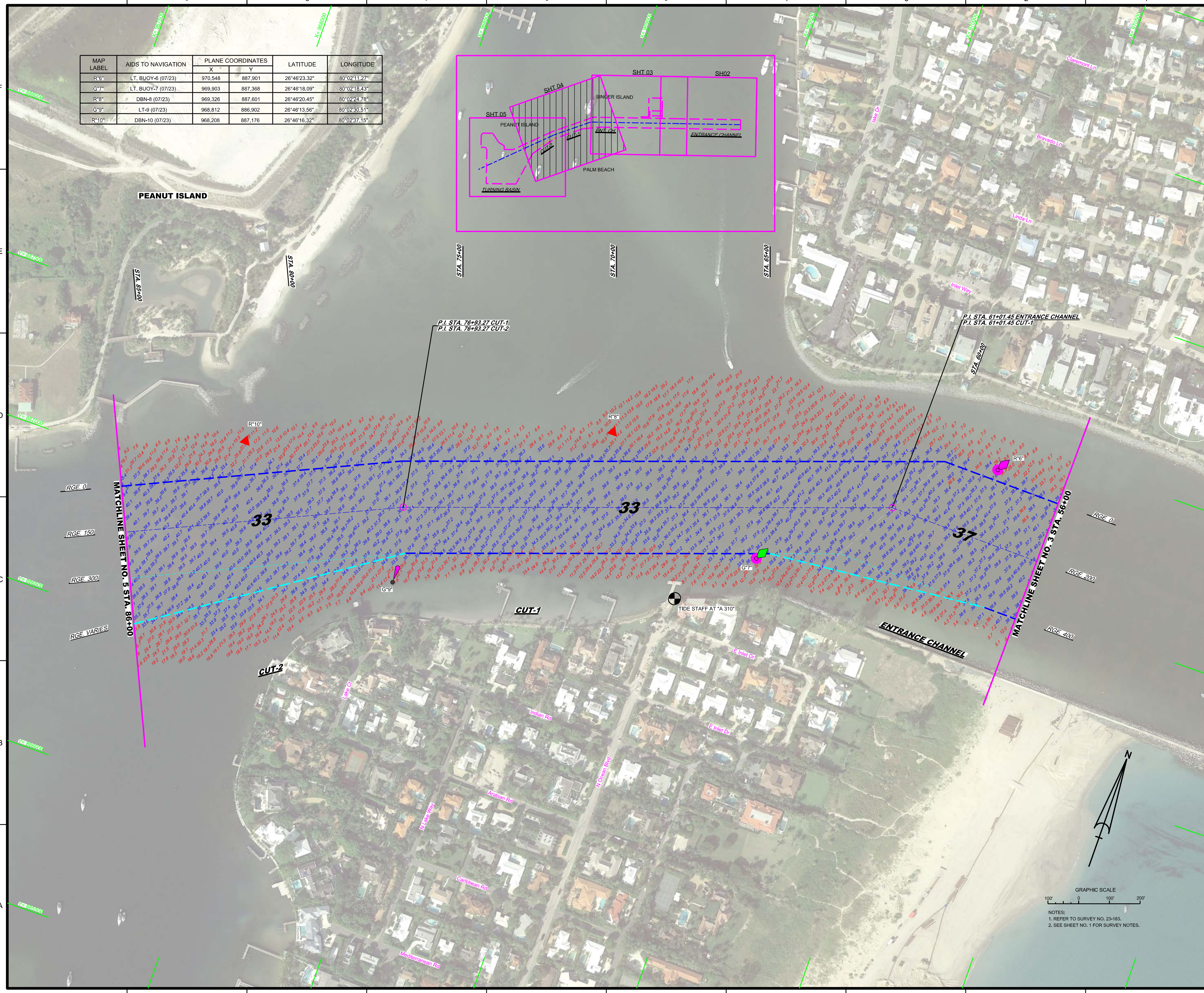
US Army Corps of Engineers  
Jacksonville District  
SAFETY ON THIS JOB  
DEPENDS ON YOU

DEPARTMENT OF THE ARMY  
JACKSONVILLE DISTRICT, CORPS OF ENGINEERS  
JACKSONVILLE, FLORIDA

Checked By: GHR  
Designed By: WRM  
Drawn By: WRM  
In Charge: WRM  
Date: JUL 2023

PALM BEACH HARBOR, FLORIDA  
**JUNE HYDROGRAPHIC EXAM SURVEY FY23**  
**25, 33, 35, 37 & 39-FOOT PROJECT**  
STA. 56+00 ENTRANCE CHANNEL THRU STA. 86+00 CUT-2  
**PLAN**

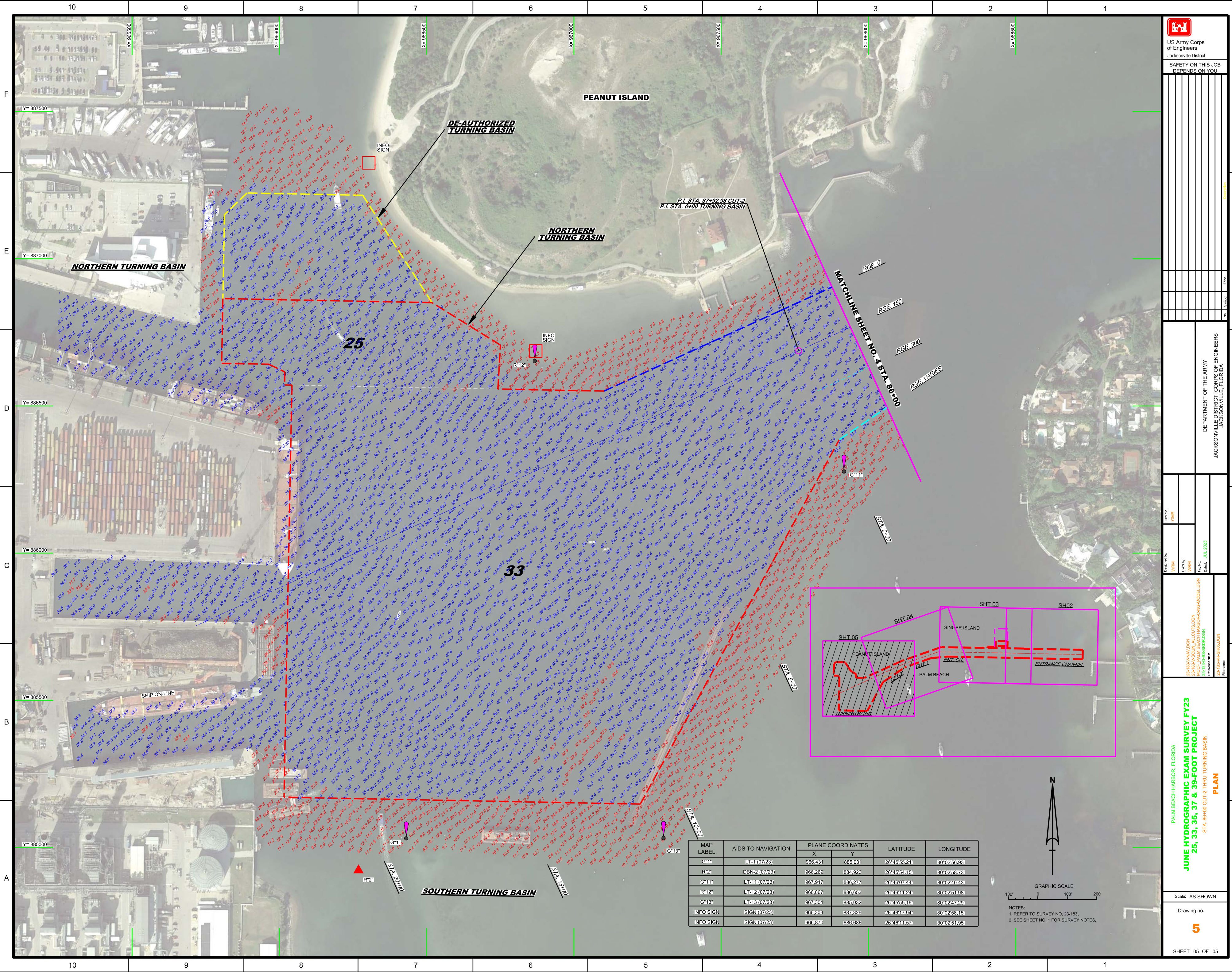
Scale: AS SHOWN  
Drawing no. **4**  
SHEET 04 OF 05



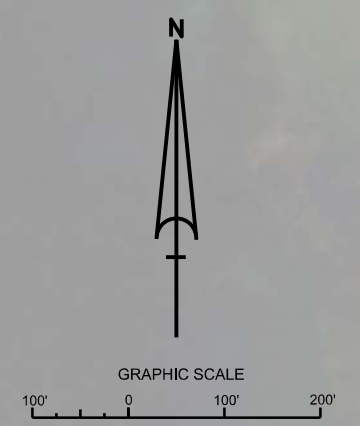
GRAPHIC SCALE  
0 100' 200'

NOTES:  
1. REFER TO SURVEY NO. 23-183.  
2. SEE SHEET NO. 1 FOR SURVEY NOTES.





MAP LABEL	AIDS TO NAVIGATION	PLANE COORDINATES		LATITUDE	LONGITUDE
		X	Y		
G11	LT-1 (07/23)	966.431	885.031	26°45'55.21"	80°02'56.93"
R2	DBN-2 (07/23)	966.269	884.923	26°45'54.15"	80°02'58.73"
G11	LT-11 (07/23)	967.917	886.277	26°46'07.41"	80°02'40.43"
R12	LT-12 (07/23)	966.867	886.653	26°46'11.24"	80°02'51.98"
G13	LT-13 (07/23)	967.304	885.032	26°45'55.16"	80°02'47.29"
INFO SIGN	SIGN (07/23)	966.303	887.626	26°46'17.94"	80°02'58.15"
INFO SIGN	SIGN (07/23)	966.870	886.686	26°46'11.57"	80°02'51.95"



NOTES:
   
 1. REFER TO SURVEY NO. 23-183.
   
 2. SEE SHEET NO. 1 FOR SURVEY NOTES.