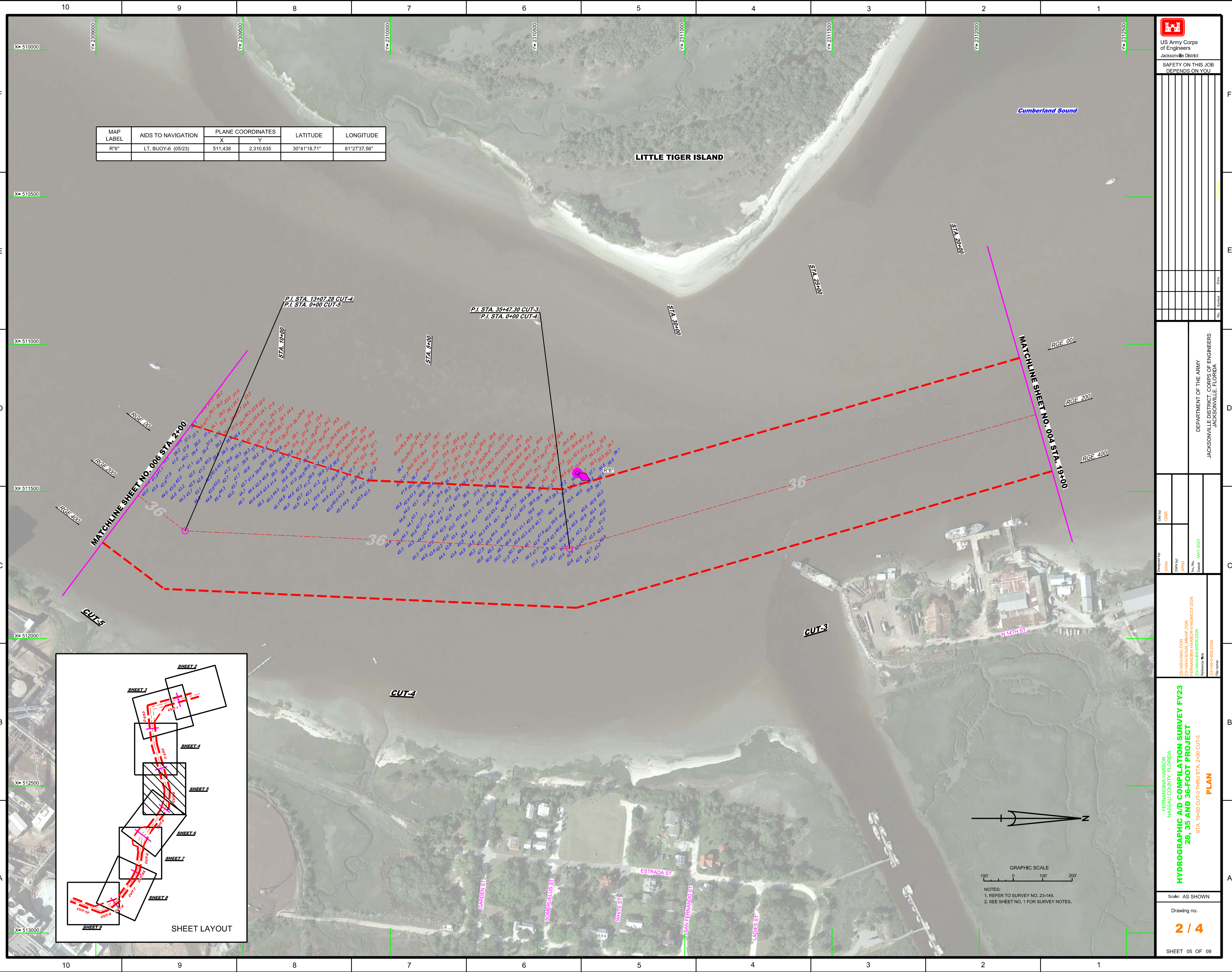
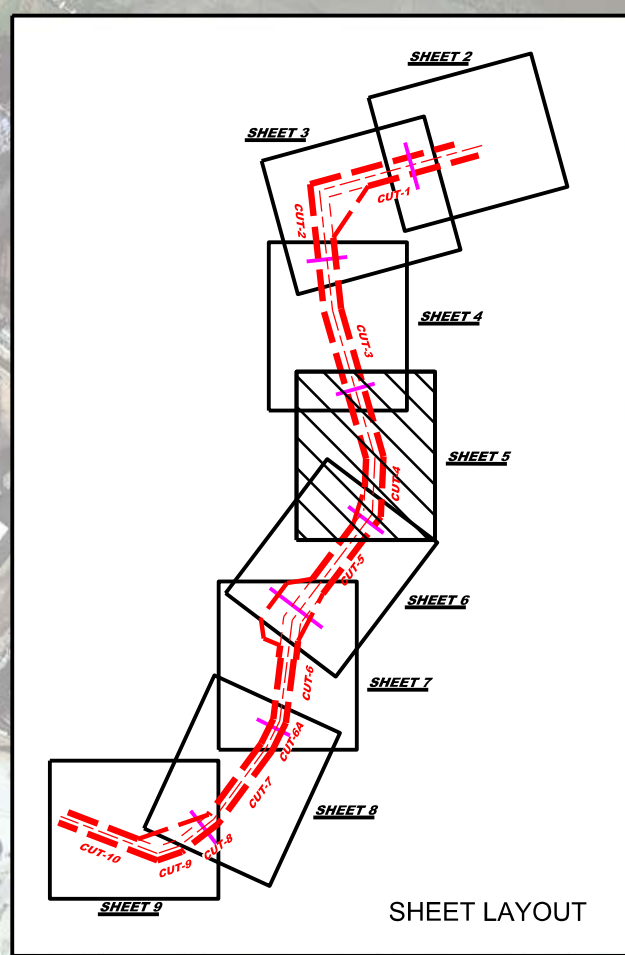






MAP LABEL	AIDS TO NAVIGATION	PLANE COORDINATES		LATITUDE	LONGITUDE
		X	Y		
R6"	LT. BUOY-6 (05/23)	511,438	2,310,635	30°41'18.71"	81°27'37.56"

[illegible]

23-148-144V.DGN	Designed by	WRM	Client	GMF
23-148-144V.DGN	DWG by	WRM		
23-148-144V.DGN	Rev. No.			
23-148-144V.DGN	Release			
23-148-144V.DGN	Reference list			
23-148-144V.DGN	File name			

HERNANDEZ PARSONS  
NASSAU COUNTY, FLORIDA

# HYDROGRAPHIC AID COMPILE SURVEY FY23

## 28, 35 AND 36-FOOT PROJECT

STA. 19+00 CUT-3 THRU STA. 2+00 CUT-5

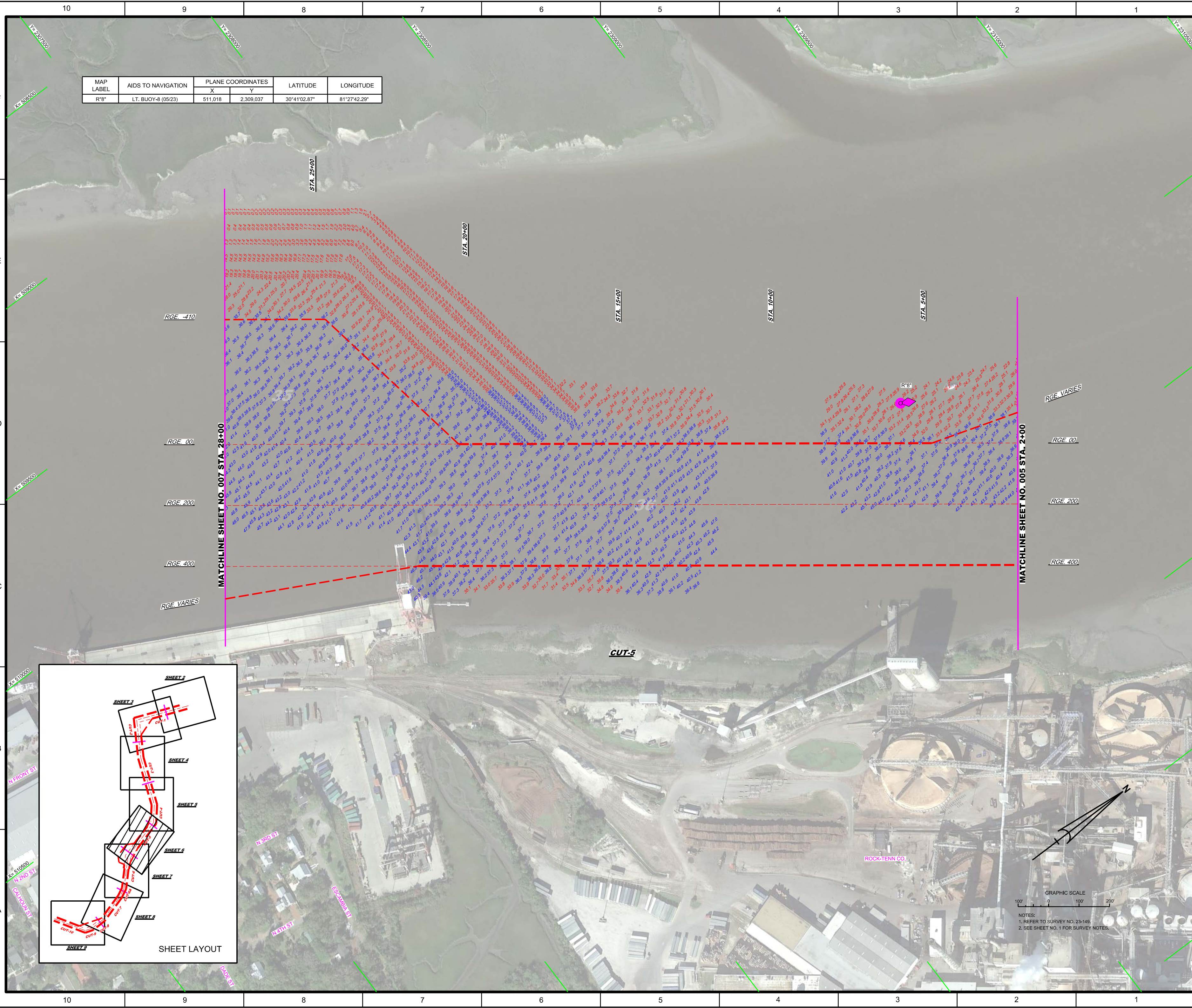
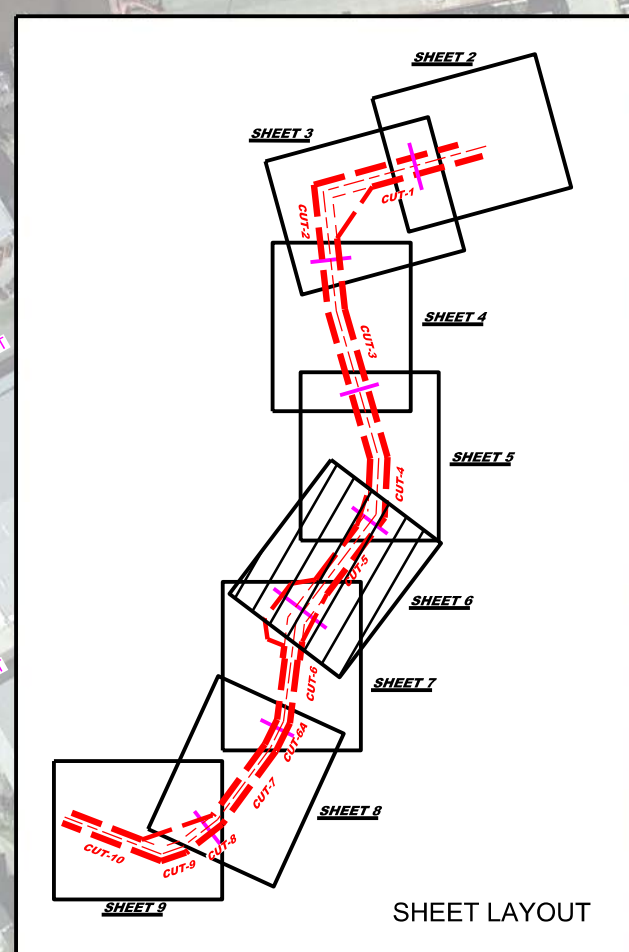
# PLAN

---

Scale:	AS SHOWN
Drawing no.	
<span style="font-size: 2em; font-weight: bold; color: #FFA500;">2 / 4</span>	
SHEET	05 OF 09



MAP LABEL	AIDS TO NAVIGATION	PLANE COORDINATES		LATITUDE	LONGITUDE
		X	Y		
B78*	LT BUOY-8 (05/23)	511.018	2 309.037	30°41'02.87"	81°27'42.29"

[illegible]

DEPARTMENT OF THE ARMY  
JACKSONVILLE DISTRICT, CORPS OF ENGINEERS  
JACKSONVILLE, FLORIDA

assigned by:	Our by:
WPM	GMR
WPM by:	
WPM	
No. No. dated: MAY 2023	

23-028-VNAV.DGN  
23-149-V-SOUN MB-HF.DGN  
23-149-V-SOUN SB-HF.DGN  
FERNANDINA HARBOR-C-NGMCCF.DGN  
23-149-G-B-S-BRDR.DGN  
Reference files  
23-149-VH-006.DGN  
Ela.marc

FERMINA HARBOR  
NASSAU COUNTY, FLORIDA

**HYDROGRAPHIC A/D COMPILATION SURVEY FY23  
28, 35 AND 36-FOOT PROJECT**

STA. 2+00 CUT-5 THRU STA. 2+00

**PLAN**

Scale: AS SHOWN

Drawing no.

**3 / 4**

SHEET 06 OF 09



MAP LABEL	AIDS TO NAVIGATION	PLANE COORDINATES		LATITUDE	LONGITUDE
		X	Y		
X	XXX (XX/XX)	X	X	X	X



SAFETY ON THIS JOB  
DEPENDS ON YOU

DEPARTMENT OF THE ARMY  
JACKSONVILLE DISTRICT, CORPS OF ENGINEERS  
JACKSONVILLE, FLORIDA

25-148-AV-SQ-LI-MB-H-F-DGN  
25-148-AV-SQ-LI-MB-H-F-DGN  
25-148-AV-SQ-LI-MB-H-F-DGN

FERNANDINA HARBOR  
NASSAU COUNTY, FLORIDA  
**HYDROGRAPHIC AID COMPAILATION SURVEY FY23  
28, 35 AND 36-FOOT PROJECT**  
STA. 28+00 CUT-5 THRU STA. 9+00 CUT-6  
**PLAN**

Scale: AS SHOWN

Drawing no.

**4 / 4**

SHEET 07 OF 09

