

MAP LABEL	AIDS TO NAVIGATION	PLANE COORDINATES		LATITUDE	LONGITUDE
		X	Y		
R*6	LT. BUOY-8 (06/22)	768,478	875,590	18°26'14.37"	66°06'33.45"
G*7	LT. BUOY-7 (06/22)	768,995	874,780	18°26'05.84"	66°06'28.08"
G*9	LT. BUOY-9 (06/22)	769,850	873,809	18°25'56.69"	66°06'19.22"

US Army Corps of Engineers
Jacksonville District

SAFETY ON THIS JOB
DEPENDS ON YOU

DEPARTMENT OF THE ARMY
JACKSONVILLE DISTRICT, CORPS OF ENGINEERS
JACKSONVILLE, FLORIDA

Checked By: GHR
Designed By: WRM
Drawn By: WRM
Scale: AS SHOWN

22-1120-ARV.DGN
22-1120-CON.DGN
22-1120-DEM.DGN
22-1120-PLAN.DGN
22-1120-PROJ.DGN
22-1120-REF.DGN
22-1120-REV.DGN
22-1120-TRK.DGN

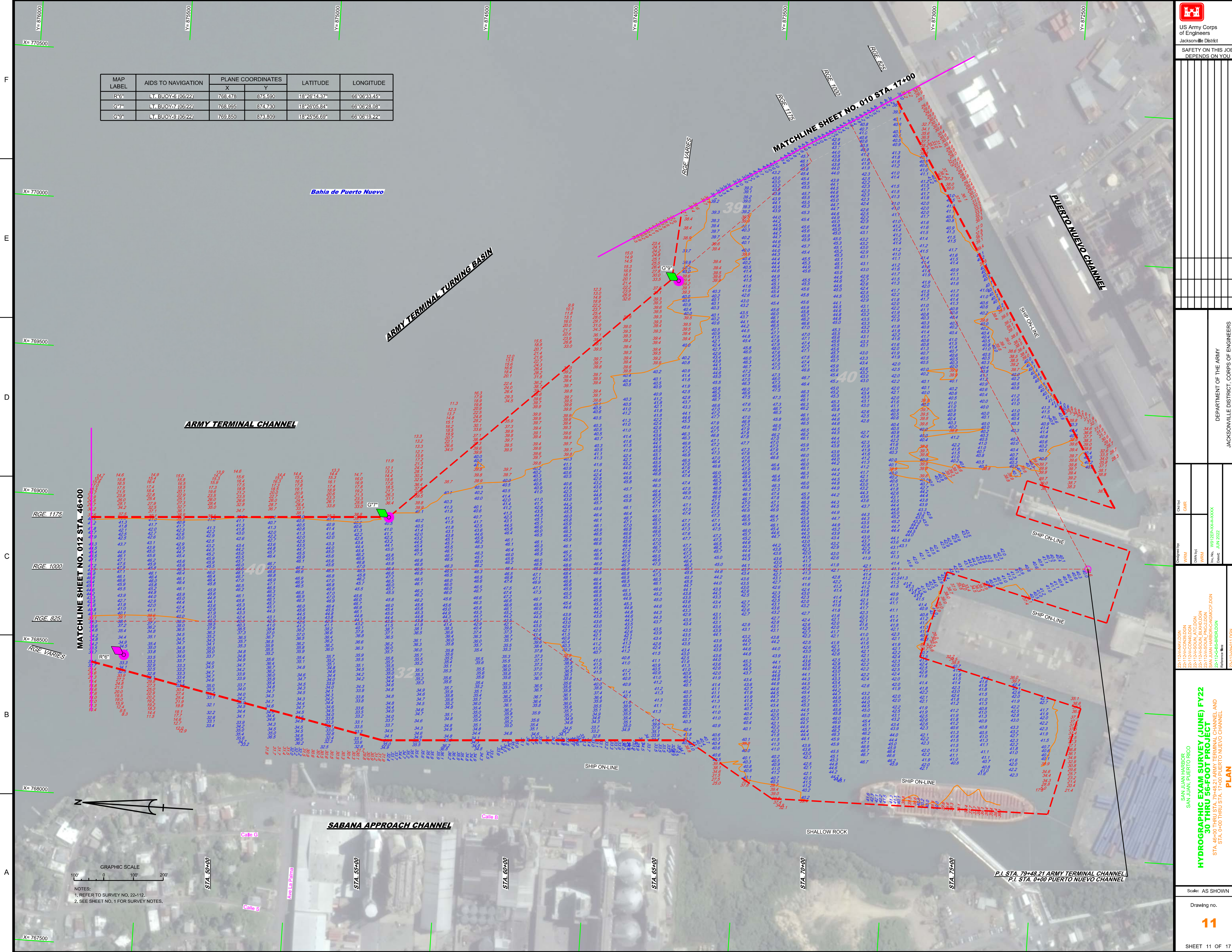
DATE: JUN 2022

PROJECT: HYDROGRAPHIC EXAM SURVEY (JUNE) FY22
STA. 46+00 THRU STA. 79+48.21 ARMY TERMINAL CHANNEL AND STA. 0+00 THRU STA. 17+00 PUERTO NUEVO CHANNEL

Scale: AS SHOWN

Drawing no. **11**

SHEET 11 OF 17





US Army Corps of Engineers
Jacksonville District

SAFETY ON THIS JOB
DEPENDS ON YOU

MAP LABEL	AIDS TO NAVIGATION	PLANE COORDINATES		LATITUDE	LONGITUDE
		X	Y		
R-4	LT. BUOY-4 (06/22)	768.387	877.191	18°26'30.24"	68°06'34.36"
G-5	LT. BUOY-5 (06/22)	768.890	876.917	18°26'27.52"	68°06'29.14"

Bahia de Puerto Nuevo

MATCHLINE SHEET NO. 006 STA. 14+00

MATCHLINE SHEET NO. 011 STA. 46+00

ARMY TERMINAL CHANNEL

SABANA APPROACH CHANNEL

GRAPHIC SCALE
100' 0 100' 200'

NOTES:
1. REFER TO SURVEY NO. 22-112.
2. SEE SHEET NO. 1 FOR SURVEY NOTES.

DEPARTMENT OF THE ARMY
JACKSONVILLE DISTRICT, CORPS OF ENGINEERS
JACKSONVILLE, FLORIDA

Checked by: GHR
Designed by: WRM
Drawn by: WRM
In Charge: WRM
Date: JUN 2022

22-112(A)AVY.DGN
22-112(A)CONC03.DGN
22-112(A)CONC04.DGN
22-112(A)CONC05.DGN
22-112(A)CONC06.DGN
22-112(A)CONC07.DGN
22-112(A)CONC08.DGN
22-112(A)CONC09.DGN
22-112(A)CONC10.DGN
22-112(A)CONC11.DGN
22-112(A)CONC12.DGN
22-112(A)CONC13.DGN
22-112(A)CONC14.DGN
22-112(A)CONC15.DGN
22-112(A)CONC16.DGN
22-112(A)CONC17.DGN
22-112(A)CONC18.DGN
22-112(A)CONC19.DGN
22-112(A)CONC20.DGN
22-112(A)CONC21.DGN
22-112(A)CONC22.DGN
22-112(A)CONC23.DGN
22-112(A)CONC24.DGN
22-112(A)CONC25.DGN
22-112(A)CONC26.DGN
22-112(A)CONC27.DGN
22-112(A)CONC28.DGN
22-112(A)CONC29.DGN
22-112(A)CONC30.DGN
22-112(A)CONC31.DGN
22-112(A)CONC32.DGN
22-112(A)CONC33.DGN
22-112(A)CONC34.DGN
22-112(A)CONC35.DGN
22-112(A)CONC36.DGN
22-112(A)CONC37.DGN
22-112(A)CONC38.DGN
22-112(A)CONC39.DGN
22-112(A)CONC40.DGN
22-112(A)CONC41.DGN
22-112(A)CONC42.DGN
22-112(A)CONC43.DGN
22-112(A)CONC44.DGN
22-112(A)CONC45.DGN
22-112(A)CONC46.DGN
22-112(A)CONC47.DGN
22-112(A)CONC48.DGN
22-112(A)CONC49.DGN
22-112(A)CONC50.DGN
22-112(A)CONC51.DGN
22-112(A)CONC52.DGN
22-112(A)CONC53.DGN
22-112(A)CONC54.DGN
22-112(A)CONC55.DGN
22-112(A)CONC56.DGN
22-112(A)CONC57.DGN
22-112(A)CONC58.DGN
22-112(A)CONC59.DGN
22-112(A)CONC60.DGN
22-112(A)CONC61.DGN
22-112(A)CONC62.DGN
22-112(A)CONC63.DGN
22-112(A)CONC64.DGN
22-112(A)CONC65.DGN
22-112(A)CONC66.DGN
22-112(A)CONC67.DGN
22-112(A)CONC68.DGN
22-112(A)CONC69.DGN
22-112(A)CONC70.DGN
22-112(A)CONC71.DGN
22-112(A)CONC72.DGN
22-112(A)CONC73.DGN
22-112(A)CONC74.DGN
22-112(A)CONC75.DGN
22-112(A)CONC76.DGN
22-112(A)CONC77.DGN
22-112(A)CONC78.DGN
22-112(A)CONC79.DGN
22-112(A)CONC80.DGN
22-112(A)CONC81.DGN
22-112(A)CONC82.DGN
22-112(A)CONC83.DGN
22-112(A)CONC84.DGN
22-112(A)CONC85.DGN
22-112(A)CONC86.DGN
22-112(A)CONC87.DGN
22-112(A)CONC88.DGN
22-112(A)CONC89.DGN
22-112(A)CONC90.DGN
22-112(A)CONC91.DGN
22-112(A)CONC92.DGN
22-112(A)CONC93.DGN
22-112(A)CONC94.DGN
22-112(A)CONC95.DGN
22-112(A)CONC96.DGN
22-112(A)CONC97.DGN
22-112(A)CONC98.DGN
22-112(A)CONC99.DGN
22-112(A)CONC100.DGN

SAN JUAN HARBOR
SAN JUAN, PUERTO RICO
HYDROGRAPHIC EXAM SURVEY (JUNE) FY22
30 THRU 56-FOOT PROJECT
STA. 14+00 THRU STA. 46+00 ARMY TERMINAL CHANNEL
PLAN

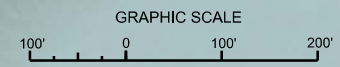
Scale: AS SHOWN

Drawing no. 12

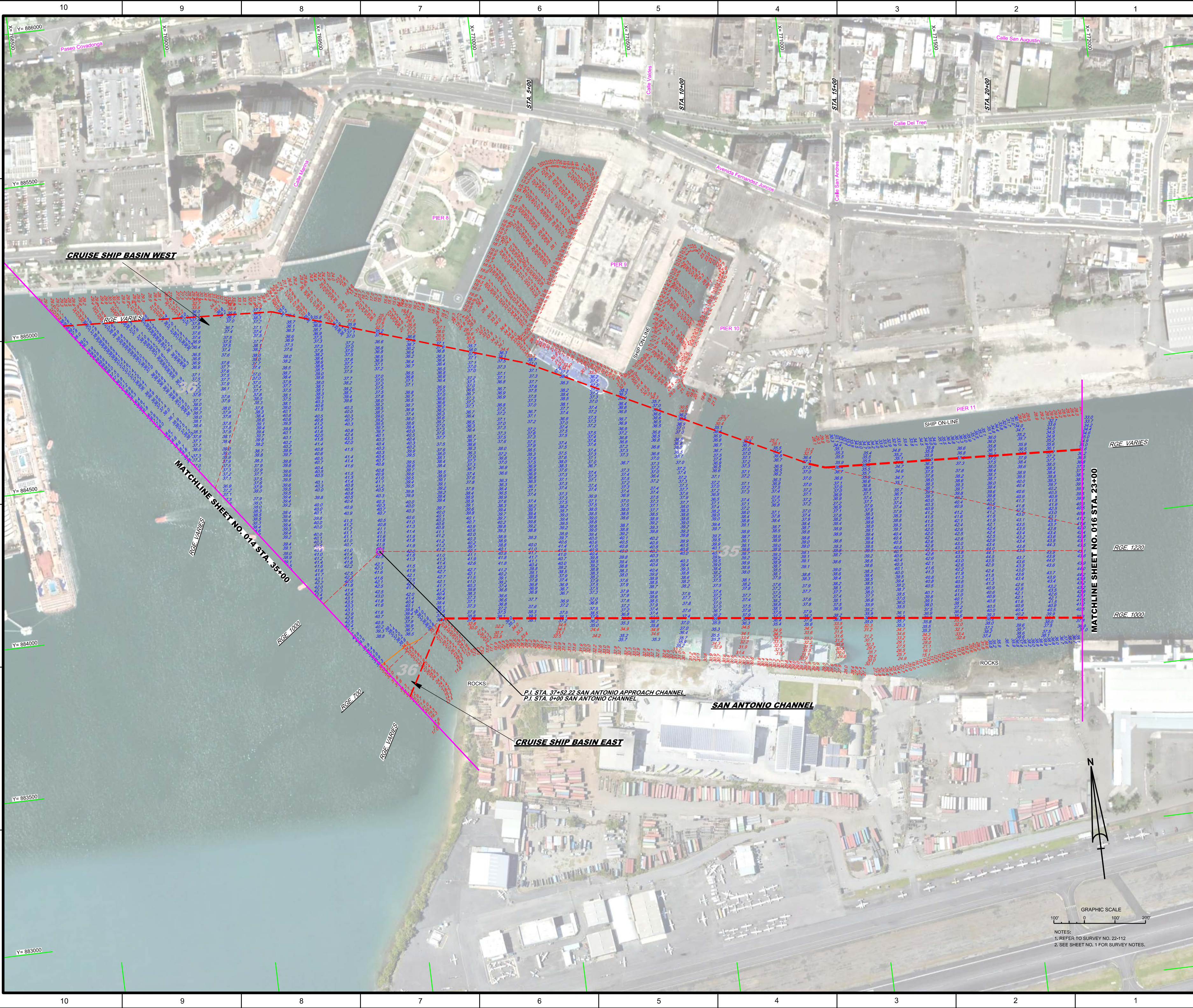
SHEET 12 OF 17




<p>US Army Corps of Engineers Jacksonville District</p>	
<p>SAFETY ON THIS JOB DEPENDS ON YOU</p>	
<p>DEPARTMENT OF THE ARMY JACKSONVILLE DISTRICT, CORPS OF ENGINEERS JACKSONVILLE, FLORIDA</p>	
<p>Drawn by: WRM</p>	<p>Checked by: GHR</p>
<p>Designated by: WRM</p>	<p>Drawn by: WRM</p>
<p>File No: 112212A-0001-0001</p>	<p>Date: JUN 2022</p>
<p>22-112A-0001-0001 22-112A-0001-0001 22-112A-0001-0001 22-112A-0001-0001</p>	
<p>San Juan Harbor San Juan, Puerto Rico</p>	
<p>HYDROGRAPHIC EXAM SURVEY (JUNE) FY22 30 THRU 56-FOOT PROJECT</p>	
<p>STA. 11+24.57 THRU STA. 35+00 SAN ANTONIO APPROACH CHANNEL</p>	
<p>PLAN</p>	
<p>Scale: AS SHOWN</p>	
<p>Drawing no.</p>	
<p>13</p>	
<p>SHEET 13 OF 17</p>	



NOTES:
1. REFER TO SURVEY NO. 22-112.
2. SEE SHEET NO. 1 FOR SURVEY NOTES.





US Army Corps
of Engineers
Jacksonville District

SAFETY ON THIS JOB
DEPENDS ON YOU

DEPARTMENT OF THE ARMY
JACKSONVILLE DISTRICT, CORPS OF ENGINEERS
JACKSONVILLE, FLORIDA

Checked by: GHR
 Designed by: WRM
 Drawn by: WRM
 Plot Date: 06/13/2022
 Date: JUN 2022

SAN JUAN HARBOR
 SAN JUAN, PUERTO RICO
HYDROGRAPHIC EXAM SURVEY (JUNE) FY22
 30 THRU 56-FOOT PROJECT
 STA. 0+00 THRU 37+52.22 SAN ANTONIO APPROACH CHANNEL AND
 STA. 0+00 THRU STA. 23+00 SAN ANTONIO CHANNEL
 PLAN

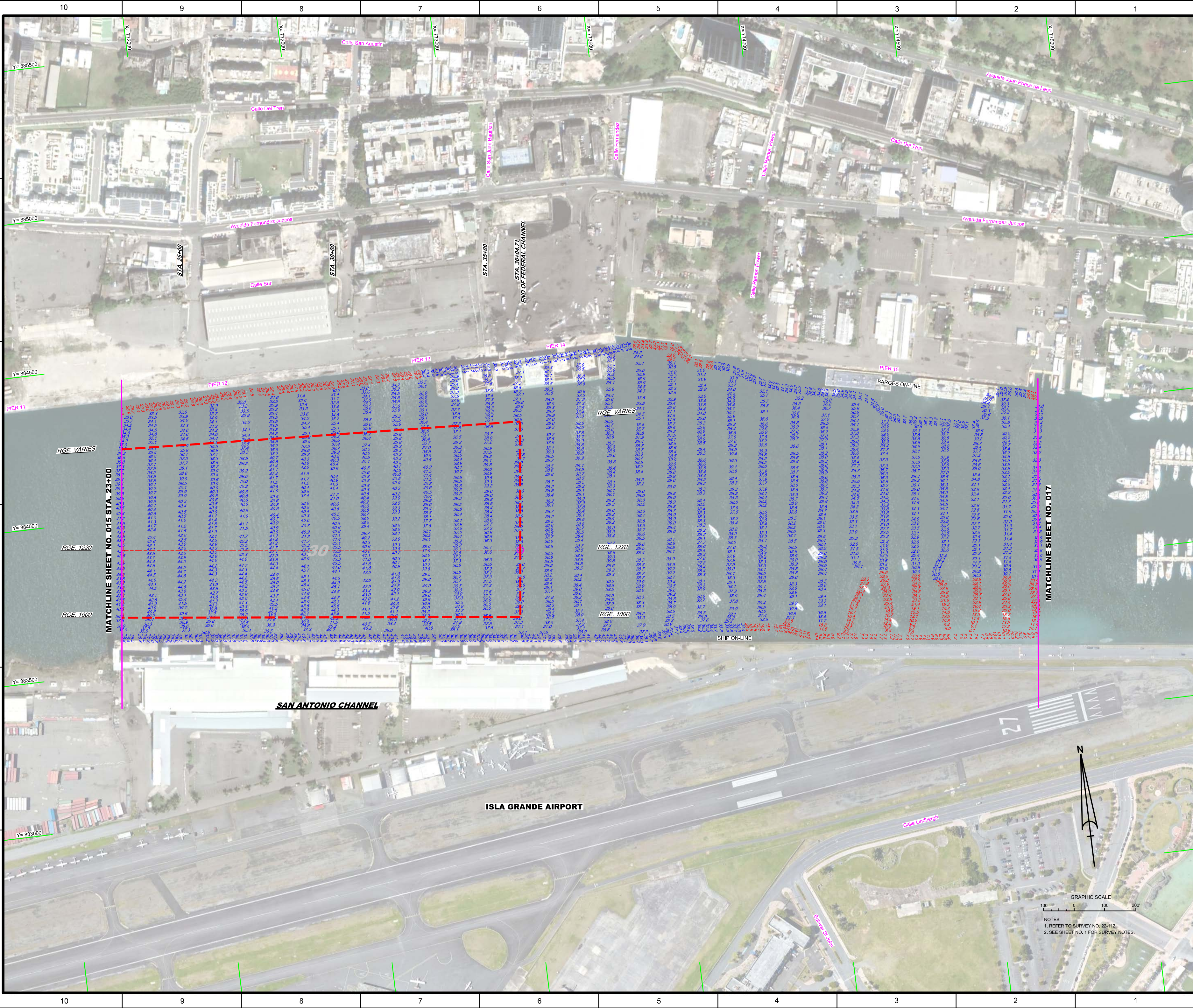
Scale: AS SHOWN


Drawing no. **15**

SHEET 15 OF 17

GRAPHIC SCALE
0 100' 200'

NOTES:
1. REFER TO SURVEY NO. 22-112
2. SEE SHEET NO. 1 FOR SURVEY NOTES.





US Army Corps
of Engineers
Jacksonville District

SAFETY ON THIS JOB
DEPENDS ON YOU

DEPARTMENT OF THE ARMY
JACKSONVILLE DISTRICT, CORPS OF ENGINEERS
JACKSONVILLE, FLORIDA

Client: GHR
Contract: W12255-04-0004
Project: SAN JUAN HARBOR CANAL OF DIGNITY
Date: JUN 2022

San Juan Harbor
San Juan, Puerto Rico

HYDROGRAPHIC EXAM SURVEY (JUNE) FY22
30 THRU 56-FOOT PROJECT

STA. 23+00 THRU STA. 36+04.71 SAN ANTONIO CHANNEL

PLAN

Scale: AS SHOWN

Drawing no. **16**

SHEET 16 OF 17

