

SAN JUAN HARBOR SAN JUAN, PUERTO RICO HYDROGRAPHIC EXAM SURVEY FY22 30 THRU 56-FOOT PROJECT

SURVEY NOTES

- REFER TO SURVEY NO. 22-112.
- SOUNDINGS ARE IN FEET AND TENTHS AND REFER TO NOAA'S REPORTED MEAN LOWER LOW WATER (MLLW) TIDAL DATUM RELATIVE TO THE 1983-2001 TIDAL EPOCH.
- TIDAL REDUCTIONS WERE OBTAINED UTILIZING A REAL-TIME KINEMATIC (RTK) GPS AND REFERENCED TO MLLW UTILIZING A HYPACK KINEMATIC TIDE DATUM (KTD) MODEL. KTD FILE NAME IS "SANJUAN-2011APRIL06.KTD".
- ALL ELEVATIONS ARE BELOW THE CHART DATUM UNLESS PRECEDED BY A (+) SIGN.
- PLANE COORDINATES ARE BASED ON THE LAMBERT CONFORMAL CONIC PROJECTION FOR PUERTO RICO & THE VIRGIN ISLANDS, ZONE 5200, NORTH AMERICAN DATUM OF 1983 (NAD83).
- ALL STATIONING REFERS TO THE CENTERLINE OF THE CHANNEL.
- THIS SURVEY WAS PERFORMED USING REAL-TIME KINEMATIC (RTK) GPS POSITIONING WITH THE FOLLOWING REFERENCE BASE LOCATION:
REFERENCE BASE LOCATED AT "USCG SAN JUAN ARP" (PID: BBN06)
TIDE STAFF LOCATED FROM "975 5371 A TIDAL" (PID: TV1513)
MLLW ELEVATION: 5.14'
A MEASURE DOWN POINT WAS SET FROM SURVEY MONUMENT "975 5371 A TIDAL", LOCATED ON THE EDGE OF USCG BULKHEAD ADJACENT TO THE BASE STATION POINT.
- DEPTHS DEPICTED BY THIS SURVEY ARE REFERENCED TO MLLW, TIDAL EPOCH 1983-2001 AS REPORTED BY THE NATIONAL OCEANIC AND ATMOSPHERIC ADMINISTRATION (NOAA). THE NOAA TIDAL STATION LISTED BELOW WAS USED TO CALIBRATE TO THE PUBLISHED MLLW HEIGHTS OF THE BENCHMARK ASSOCIATED WITH THE TIDE GAGE SITE SPECIFIED BELOW:
NOAA TIDAL STATION 975-5371 A TIDAL USED FOR ALL CUTS. (PID: TV1513)
VERTICAL MEASUREMENTS WERE MADE USING TELEDYNE ODOM ECHOTRAC E20. ALL SOUNDINGS SHOWN ARE IN HIGH FREQUENCY.

VESSEL	DATE OF SURVEY	CUT
SB-34	24 MAY 2022	SAN ANTONIO APPROACH CH., BERTHING AREAS
SB-34	25 MAY 2022	BAR CUTS 1 THRU 6
SB-34	26 MAY 2022	SAN ANTONIO CH., BERTHING AREAS
SB-34	27 MAY 2022	ANEGADO CHANNEL
SB-34	31 MAY 2022	GRAVING DOCK CHANNEL
SB-34	06 JUN 2022	PUERTO NUEVO TURNING BASIN, PUERTO NUEVO CHANNEL
SB-34	07 JUN 2022	ARMY TERMINAL CHANNEL

LEGEND

	MONUMENT
	LIGHTED BEACON
	GREEN DAYBEACON
	RED DAYBEACON
	RED LIGHTED BUOY
	GREEN LIGHTED BUOY
	CAN BUOY
	NUN BUOY
	TIDE STAFF
	PROJECT DEPTH

US Army Corps of Engineers
Jacksonville District
SAFETY ON THIS JOB
DEPENDS ON YOU

DEPARTMENT OF THE ARMY
JACKSONVILLE DISTRICT, CORPS OF ENGINEERS
JACKSONVILLE, FLORIDA

San Juan Harbor
San Juan, Puerto Rico
Hydrographic Exam Survey (June) FY22
30 thru 56-foot project
INDEX, LOCATION AND VICINITY
MAP

Scale: AS SHOWN
Drawing no. 1
SHEET 01 OF 17

MAP LABEL	AIDS TO NAVIGATION	PLANE COORDINATES		LATITUDE	LONGITUDE
		X	Y		
R*10*	LT. BUOY-10 (05/22)	764,086	883,453	18°27'32.39"	66°07'18.92"
G*11*	LT. BUOY-11 (05/22)	765,723	883,261	18°27'30.47"	66°07'01.92"

US Army Corps of Engineers
Jacksonville District
SAFETY ON THIS JOB
DEPENDS ON YOU

MATCHLINE SHEET NO. 13 RGE. 2100

CRUISE SHIP BASIN WEST

ANEGADO CHANNEL

ANCHORAGE AREA

MATCHLINE SHEET NO. 003 STA. 6+00

MATCHLINE SHEET NO. 005 STA. 36+00

RGE 1400

RGE 1400

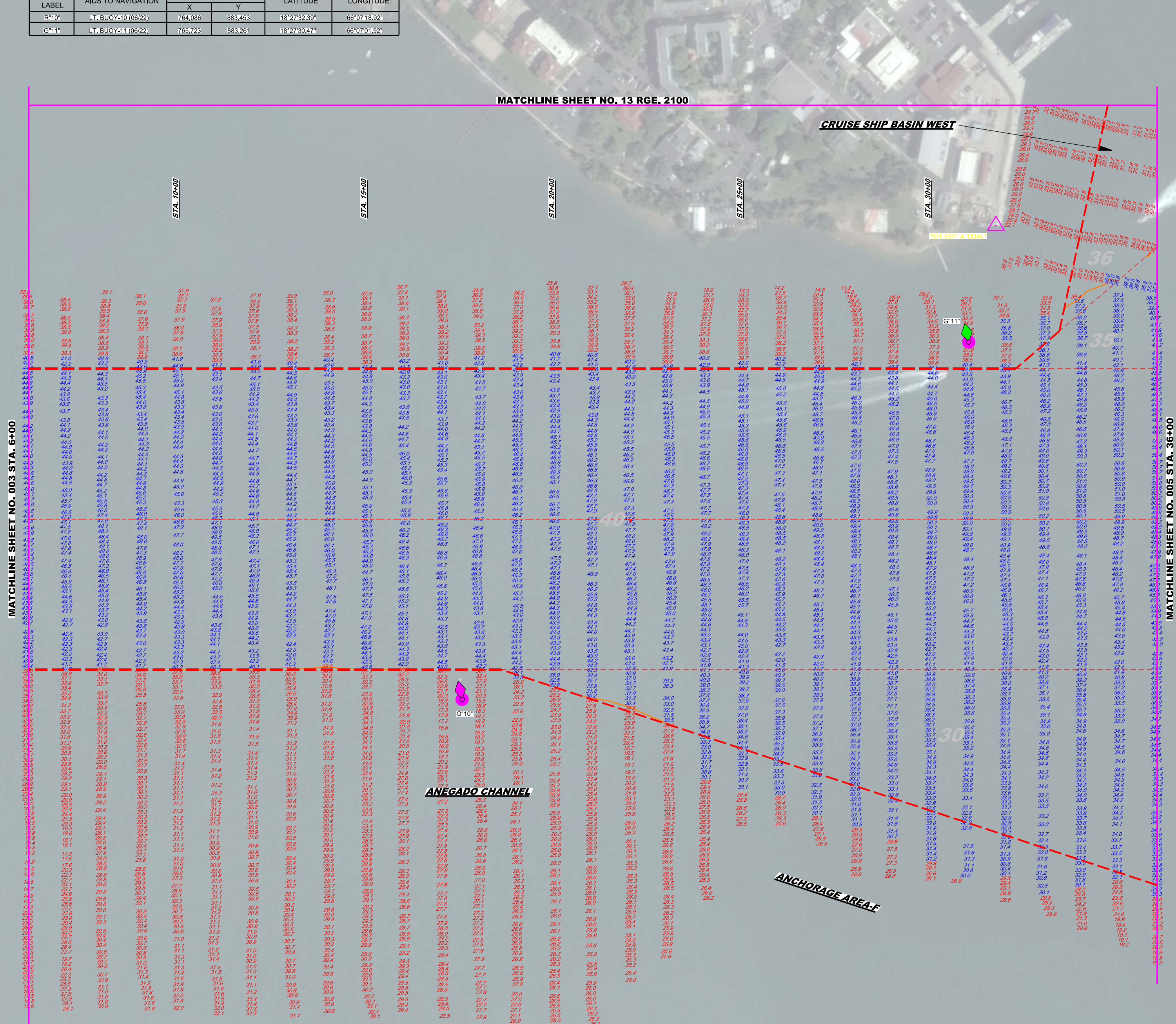
RGE 1000

RGE 1000

RGE 600

RGE 600

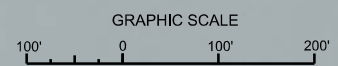
RGE VARIES



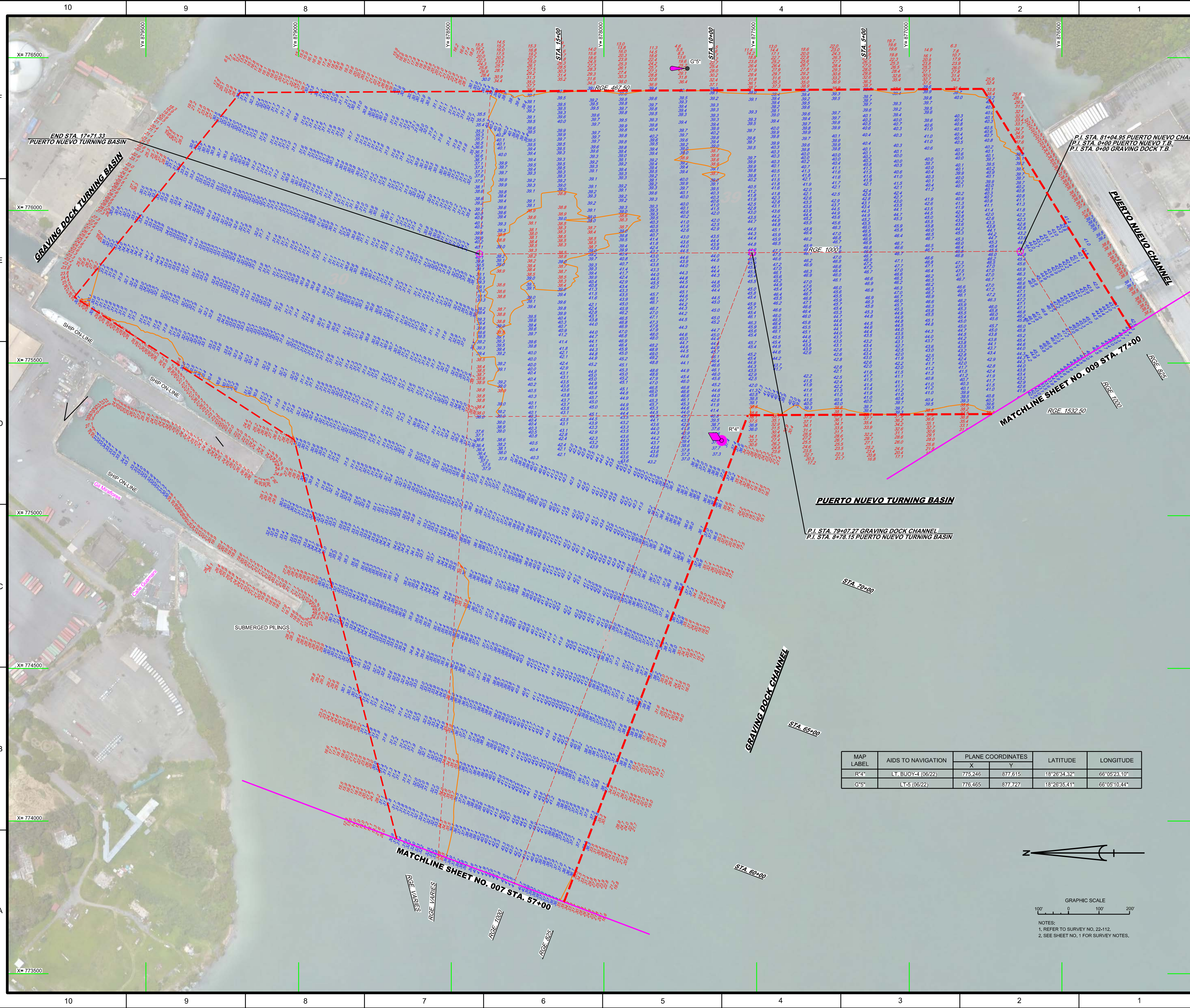
DEPARTMENT OF THE ARMY
JACKSONVILLE DISTRICT, CORPS OF ENGINEERS
JACKSONVILLE, FLORIDA

San Juan Harbor
San Juan, Puerto Rico
Hydrographic Exam Survey (June) FY22
30 THRU 56-FOOT PROJECT
PLAN
STA. 6+00 CUT-3 THRU STA. 36+00 ANEGADO CHANNEL

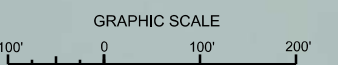
Scale: AS SHOWN
Drawing no. 4
SHEET 04 OF 17



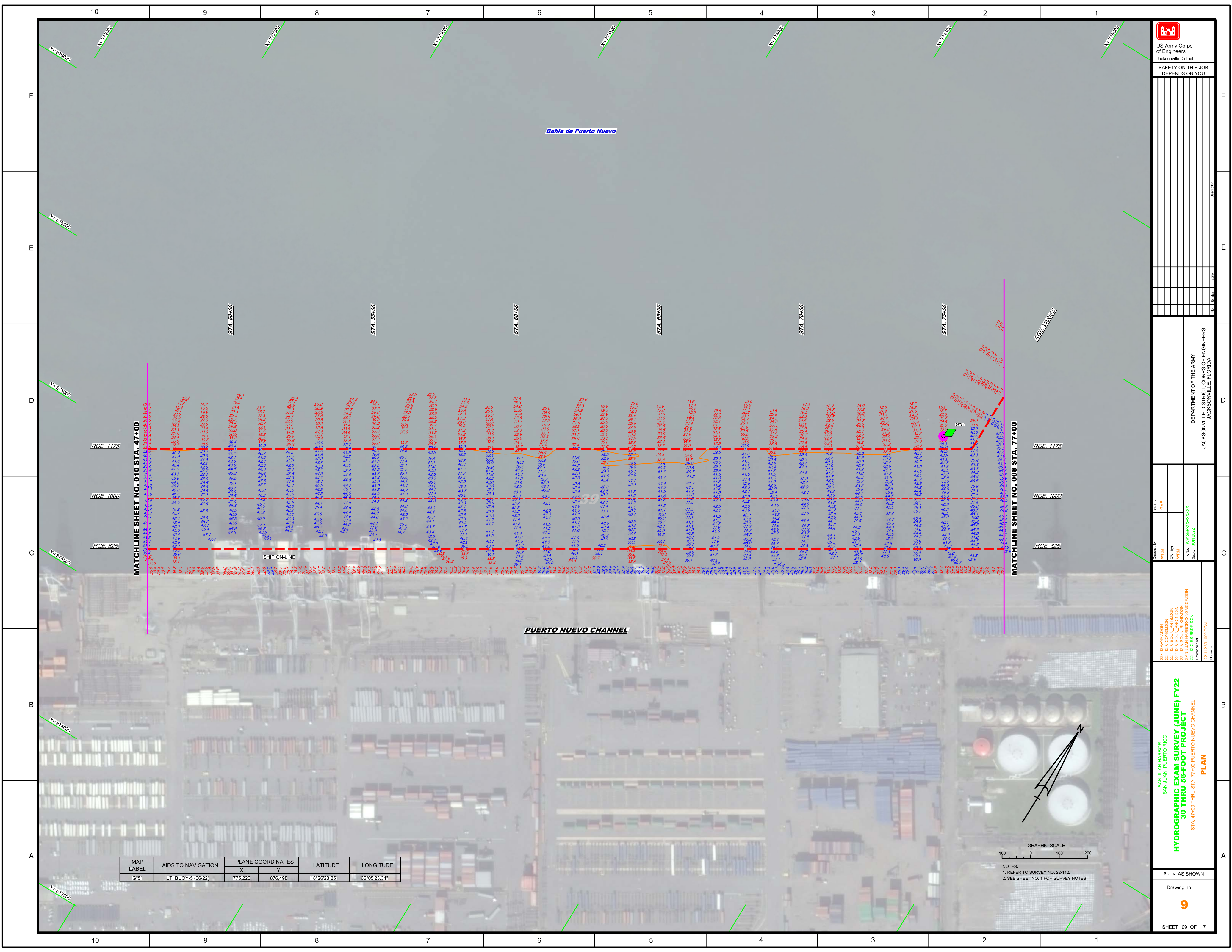
NOTES:
1. REFER TO SURVEY NO. 22-112.
2. SEE SHEET NO. 1 FOR SURVEY NOTES.



MAP LABEL	AIDS TO NAVIGATION	PLANE COORDINATES		LATITUDE	LONGITUDE
		X	Y		
R*4	LT. BUOY-4 (06/22)	775.246	877.615	18°26'34.32"	66°05'23.10"
G*5	LT-5 (06/22)	776.465	877.727	18°26'35.41"	66°05'10.44"



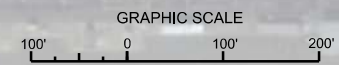
NOTES:
1. REFER TO SURVEY NO. 22-112.
2. SEE SHEET NO. 1 FOR SURVEY NOTES.




Bahia de Puerto Nuevo

PUERTO NUEVO CHANNEL

MAP LABEL	AIDS TO NAVIGATION	PLANE COORDINATES		LATITUDE	LONGITUDE
		X	Y		
G*5	LT. BUOY-5 (06/22)	775.226	876.498	18°26'23.26"	66°05'23.34"



NOTES:
1. REFER TO SURVEY NO. 22-112.
2. SEE SHEET NO. 1 FOR SURVEY NOTES.



US Army Corps of Engineers
Jacksonville District

SAFETY ON THIS JOB
DEPENDS ON YOU

DEPARTMENT OF THE ARMY
JACKSONVILLE DISTRICT, CORPS OF ENGINEERS
JACKSONVILLE, FLORIDA

San Juan Harbor
San Juan, Puerto Rico

HYDROGRAPHIC EXAM SURVEY (JUNE) FY22
30 THRU 56-FOOT PROJECT

STA. 47+00 THRU STA. 77+00 PUERTO NUEVO CHANNEL

PLAN

Scale: AS SHOWN

Drawing no. **9**

SHEET 09 OF 17

