

# JOHNS PASS PINELLAS COUNTY, FLORIDA HYDROGRAPHIC EXAM SURVEY FY20 6, 8 AND 10-FOOT PROJECT

### SURVEY NOTES

- REFER TO SURVEY NO. 20-255.
- TIDAL REDUCTIONS WERE OBTAINED UTILIZING A REAL-TIME KINEMATIC (RTK) GPS AND REFERENCED TO MLLW UTILIZING A HYPACK KINEMATIC TIDE DATUM (KTD) MODEL. KTD FILE NAME: "SPC-FL-WEST-2010-12-07.KTD".
- ALL ELEVATIONS ARE BELOW THE CHART DATUM UNLESS PRECEDED BY A (+) SIGN.
- PLANE COORDINATES ARE BASED ON THE TRANSVERSE MERCATOR PROJECTION FOR THE WEST ZONE OF FLORIDA AND REFERENCED TO NORTH AMERICAN DATUM OF 1983 (NAD83).
- ALL STATIONING REFERS TO THE CENTERLINE OF THE CHANNEL.
- THIS SURVEY WAS PERFORMED USING REAL-TIME KINEMATIC (RTK) GPS POSITIONING WITH THE FOLLOWING REFERENCE BASE LOCATION:  
REFERENCE BASE LOCATED AT "JP-101" (PID: BBCB34)
- DEPTHS DEPICTED BY THIS SURVEY ARE REFERENCED TO MLLW, TIDAL EPOCH 1983-2001, AS REPORTED BY THE NATIONAL OCEANIC AND ATMOSPHERIC ADMINISTRATION (NOAA). A MODIFIED VERSION OF NOAA'S VDUTUM MODEL WAS USED TO CALIBRATE TO THE PUBLISHED MLLW HEIGHTS OF THE BENCH MARKS BELOW:  
NGS BENCHMARK "872 6574" USED FOR ALL CUTS (PID: DM3817)
- VERTICAL MEASUREMENTS WERE MADE USING A R2SONIC 2024 MULTI-BEAM OPERATING AT 300 KHZ AND A ROSS 835C SINGLE-BEAM OPERATING AT 28/200 KHZ. ALL SOUNDINGS SHOWN ARE IN HIGH FREQUENCY.

VESSEL	DATE OF SURVEY	CUT
SB-52	18 AUG 2020	CUT-1
SB-52	20 AUG 2020	CUTS 2A, 2B, 2C & 3
SB-52	24 AUG 2020	CUT-4
SB-52	26 AUG 2020	CUTS 5, 6 & 7

LEGEND	
	MONUMENT
	LIGHTED BEACON
	GREEN DAYBEACON
	RED DAYBEACON
	RED LIGHTED BUOY
	GREEN LIGHTED BUOY
	CAN BUOY
	NUN BUOY
	TIDE STAFF
	PROJECT DEPTH

US Army Corps of Engineers  
Jacksonville District  
SAFETY ON THIS JOB DEPENDS ON YOU

---

DEPARTMENT OF THE ARMY  
JACKSONVILLE DISTRICT, CORPS OF ENGINEERS  
JACKSONVILLE, FLORIDA

---

JOHNS PASS, FLORIDA  
PINELLAS COUNTY, FLORIDA  
**HYDROGRAPHIC EXAM SURVEY FY20  
6, 8 AND 10-FOOT PROJECT**  
INDEX, LOCATION AND VICINITY  
MAP

---

Scale: AS SHOWN

Drawing no.  
**1 / 5**

SHEET 01 OF 06



US Army Corps of Engineers  
Jacksonville District

SAFETY ON THIS JOB  
DEPENDS ON YOU

DEPARTMENT OF THE ARMY  
JACKSONVILLE DISTRICT, CORPS OF ENGINEERS  
JACKSONVILLE, FLORIDA

Designed by:  
WRM  
Checked by:  
GHR  
Date:  
AUG 2020

JOHNS PASS,  
PINELLAS COUNTY, FLORIDA  
**HYDROGRAPHIC EXAM SURVEY FY20  
6, 8 AND 10-FOOT PROJECT**  
STA. 0+00 CUT-1 THRU STA. 9+00 CUT-2A  
**PLAN**

Scale: AS SHOWN

Drawing no.

**2 / 5**

SHEET 02 OF 06

GULF OF MEXICO

P.I. STA. 21+03.23 CUT-1  
P.I. STA. 0+00 CUT-2A

STA. 0+00

STA. 5+00

STA. 10+00

STA. 15+00

STA. 20+00

STA. 5+00

RGE. 150

RGE. 75

RGE. 00

MATCHLINE SHEET NO. 003 STA. 9+00

CUT-1

CUT-2A

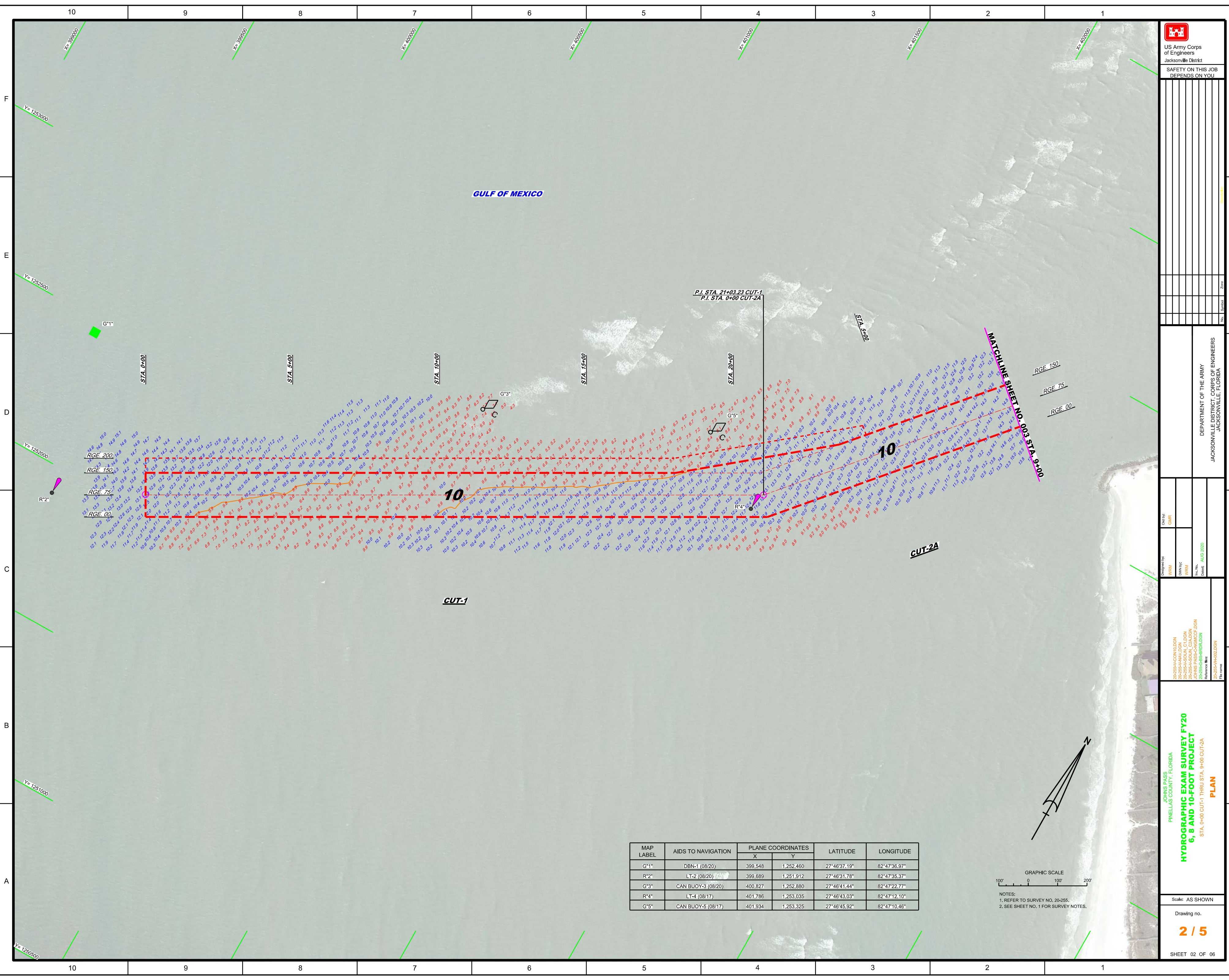
10

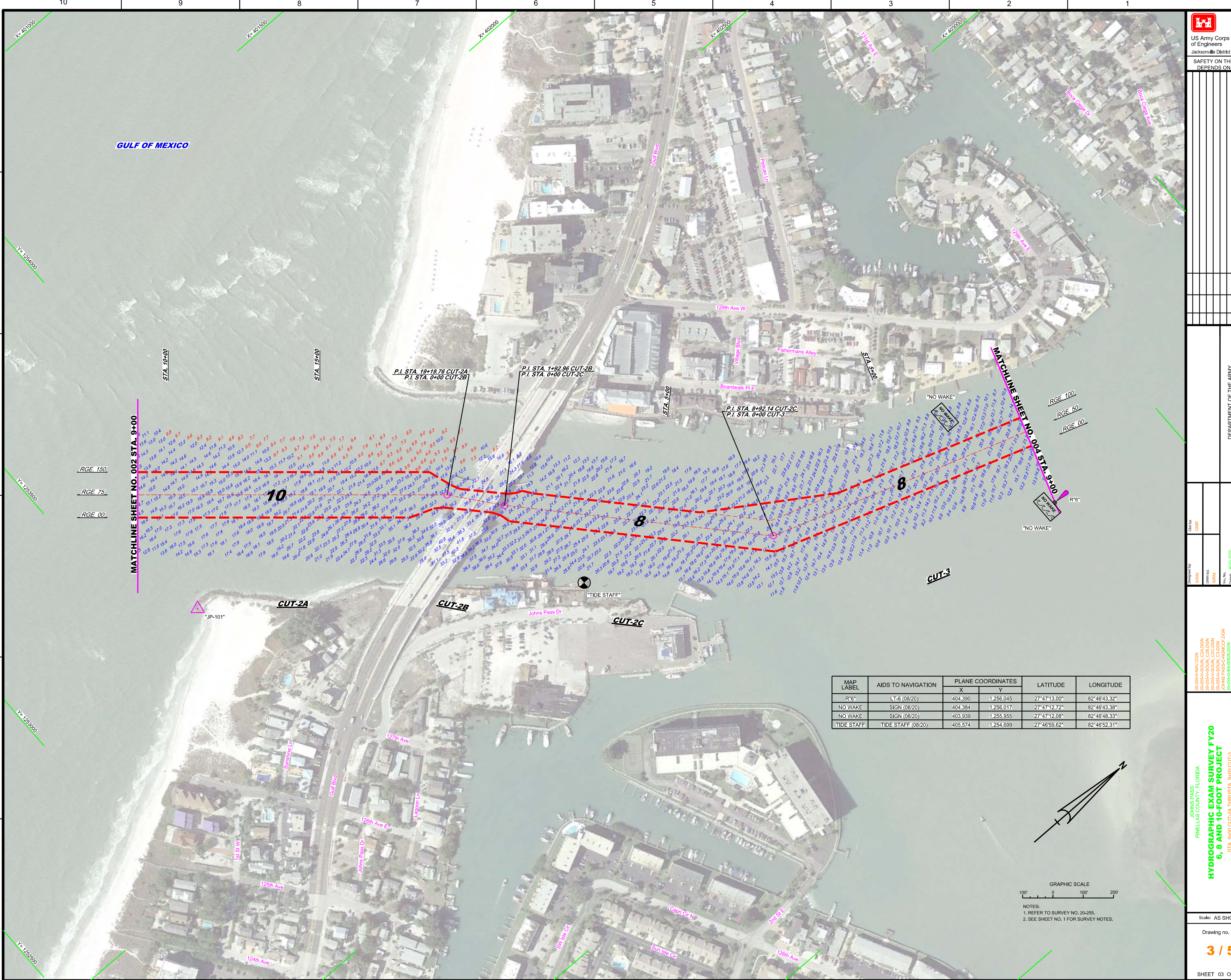
10

MAP LABEL	AIDS TO NAVIGATION	PLANE COORDINATES		LATITUDE	LONGITUDE
		X	Y		
G*1*	DBN-1 (08/20)	399,548	1,252,360	27°46'37.19"	82°47'36.97"
R*2*	LT-2 (08/20)	399,889	1,251,912	27°46'31.78"	82°47'35.37"
G*3*	CAN BUOY-3 (08/20)	400,827	1,252,880	27°46'41.44"	82°47'22.77"
R*4*	LT-4 (08/17)	401,786	1,253,035	27°46'43.03"	82°47'12.10"
G*5*	CAN BUOY-5 (08/17)	401,934	1,253,325	27°46'45.92"	82°47'10.46"

GRAPHIC SCALE

NOTES:  
1. REFER TO SURVEY NO. 20-255.  
2. SEE SHEET NO. 1 FOR SURVEY NOTES.





US Army Corps  
of Engineers  
Jacksonville District

SAFETY ON THIS JOB  
DEPENDS ON YOU

DEPARTMENT OF THE ARMY  
JACKSONVILLE DISTRICT, CORPS OF ENGINEERS  
JACKSONVILLE, FLORIDA

Checked By: GHR  
Designed By: WRM  
Drawn By: WRM  
Project No: 20-255  
Contract: AUG 2020  
Reference Map: 20-255-H400-00N  
20-255-A-000L-C38-00N  
20-255-A-000L-C39-00N  
20-255-C-000L-C38-00N  
20-255-C-000L-C39-00N  
20-255-G-000L-C38-00N  
20-255-G-000L-C39-00N

JOHNS PASS  
PINELAS COUNTY, FLORIDA  
**HYDROGRAPHIC EXAM SURVEY FY20**  
**6, 8 AND 10-FOOT PROJECT**  
STA. 9+00 CUT-2A THRUSTA, 9+00 CUT-3  
**PLAN**

Scale: AS SHOWN

Drawing no.

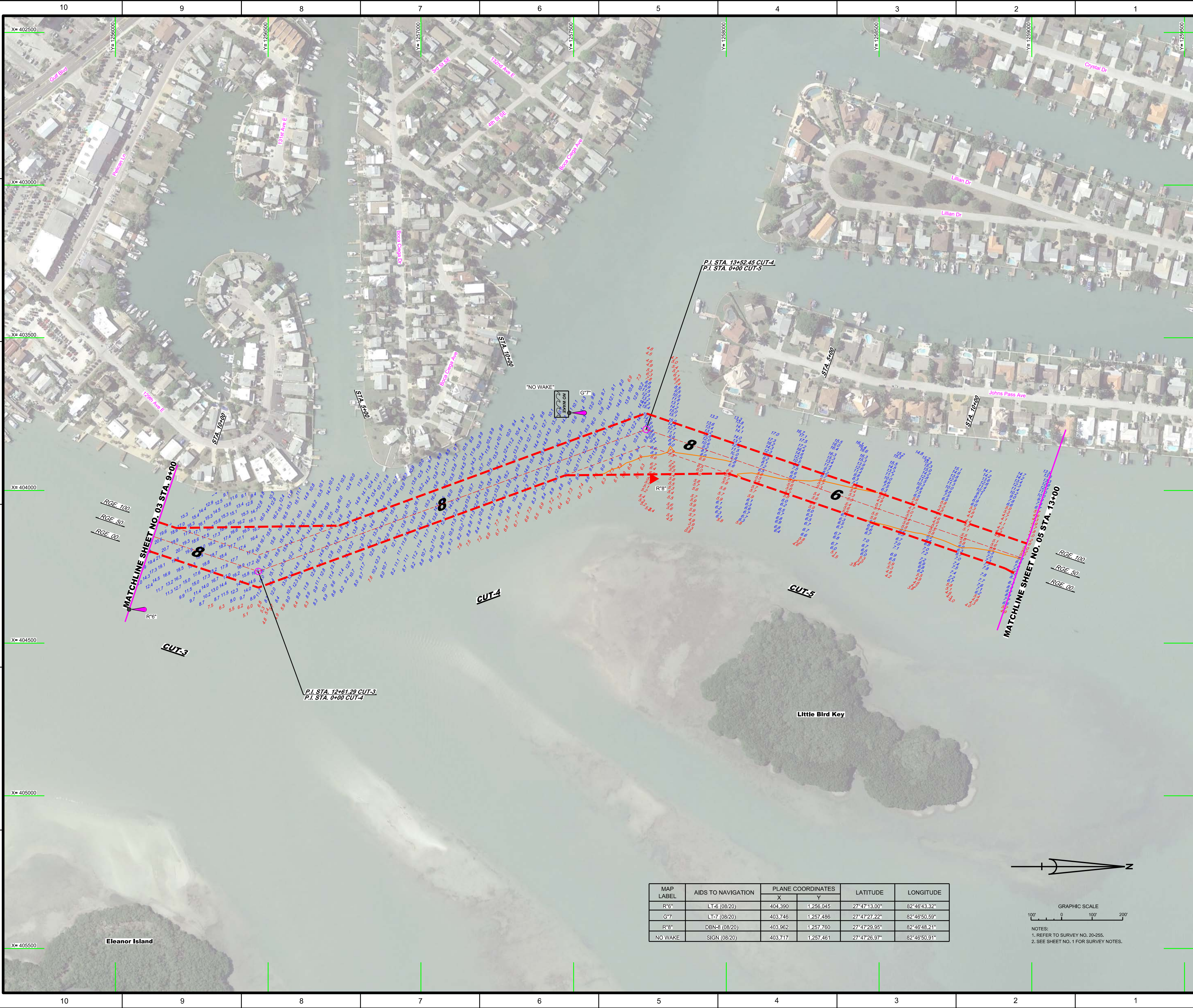
3 / 5


SHEET 03 OF 06

MAP LABEL	AIDS TO NAVIGATION	PLANE COORDINATES		LATITUDE	LONGITUDE
		X	Y		
R*6	LT-6 (08/20)	404,390	1,256,045	27°47'13.00"	82°46'43.32"
NO WAKE	SIGN (08/20)	404,384	1,256,017	27°47'12.72"	82°46'43.38"
NO WAKE	SIGN (08/20)	403,939	1,255,955	27°47'12.08"	82°46'48.33"
TIDE STAFF	TIDE STAFF (08/20)	405,574	1,254,699	27°46'58.62"	82°46'52.31"

GRAPHIC SCALE  
100' 0 100' 200'

NOTES:  
1. REFER TO SURVEY NO. 20-255.  
2. SEE SHEET NO. 1 FOR SURVEY NOTES.




 US Army Corps of Engineers  
 Jacksonville District  
 SAFETY ON THIS JOB  
 DEPENDS ON YOU

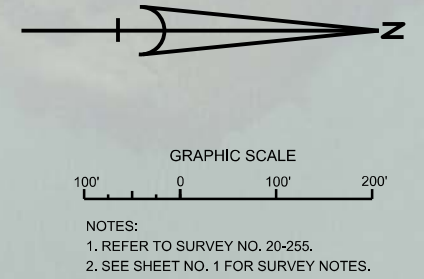
DEPARTMENT OF THE ARMY  
 JACKSONVILLE DISTRICT, CORPS OF ENGINEERS  
 JACKSONVILLE, FLORIDA

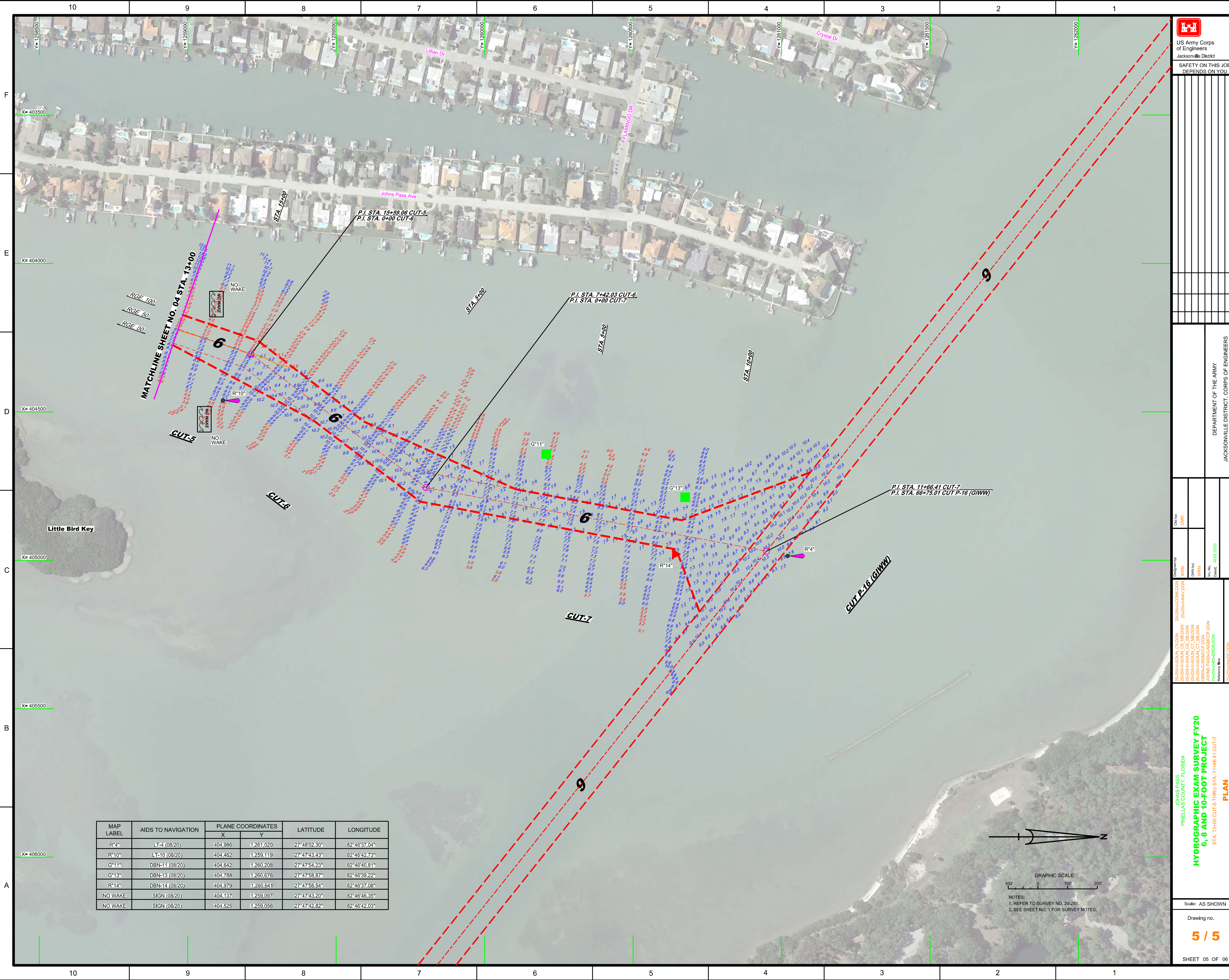
Checked by:	GHR
Designed by:	WRM
Drawn by:	WRM
File No.:	JOHNS PASS-CANAL-CDLON
Project No.:	JOHNS PASS-CANAL-CDLON
Revision:	JOHNS PASS-CANAL-CDLON
Date:	AUG 2020

JOHN'S PASS  
 PINELLAS COUNTY, FLORIDA  
**HYDROGRAPHIC EXAM SURVEY FY20**  
**6, 8 AND 10-FOOT PROJECT**  
 STA. 9+00 CUT-3 THRU STA. 13+00 CUT-5  
**PLAN**

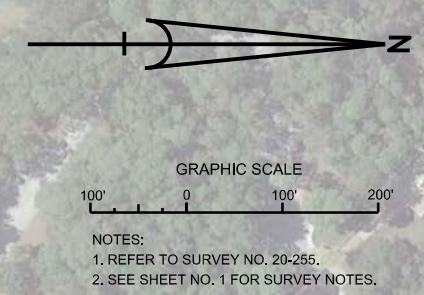
Scale: AS SHOWN  
 Drawing no.  
**4 / 5**  
 SHEET 04 OF 06

MAP LABEL	AIDS TO NAVIGATION	PLANE COORDINATES		LATITUDE	LONGITUDE
		X	Y		
R*6"	LT-6 (08/20)	404,390	1,256,045	27°47'13.00"	82°46'43.32"
G*7"	LT-7 (08/20)	403,746	1,257,486	27°47'23.22"	82°46'50.59"
R*8"	DBN-8 (08/20)	403,962	1,257,760	27°47'23.95"	82°46'48.21"
NO WAKE	SIGN (08/20)	403,717	1,257,461	27°47'26.97"	82°46'50.91"





MAP LABEL	AIDS TO NAVIGATION	PLANE COORDINATES		LATITUDE	LONGITUDE
		X	Y		
R*4"	LT-4 (08/20)	404.986	1,261,020	27°48'02.30"	82°46'37.04"
R*10"	LT-10 (08/20)	404.462	1,259,119	27°47'43.43"	82°46'42.73"
G*11"	DBN-11 (08/20)	404.642	1,260,208	27°47'54.23"	82°46'40.81"
G*13"	DBN-13 (08/20)	404.788	1,260,676	27°47'58.87"	82°46'39.22"
R*14"	DBN-14 (08/20)	404.979	1,260,641	27°47'58.54"	82°46'37.08"
NO WAKE	SIGN (08/20)	404.137	1,259,097	27°47'43.20"	82°46'46.35"
NO WAKE	SIGN (08/20)	404.525	1,259,056	27°47'42.82"	82°46'42.03"



**US Army Corps of Engineers**  
Jacksonville District

SAFETY ON THIS JOB  
DEPENDS ON YOU


DEPARTMENT OF THE ARMY  
JACKSONVILLE DISTRICT, CORPS OF ENGINEERS  
JACKSONVILLE, FLORIDA

Checked by: GHR

Designed by: WRM

Drawn by: WRM

Field Notes: JONNS PASS-CANAL-CUT

Reference files: 20-255-ACONW.DGN, 20-255-ANW.DGN, 20-255-ANW.DGN, 20-255-ANW.DGN, 20-255-ANW.DGN, 20-255-ANW.DGN, 20-255-ANW.DGN, 20-255-ANW.DGN

Scale: AS SHOWN

Drawing no.  
**5 / 5**

SHEET 05 OF 06

JOHNS PASS  
PINELAS COUNTY, FLORIDA

**HYDROGRAPHIC EXAM SURVEY FY20**  
**6, 8 AND 10-FOOT PROJECT**  
STA. 13+00 CUT-5 THRU STA. 11+66.41 CUT-7  
**PLAN**