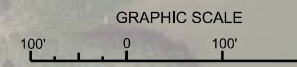


Created by: GHR
 Checked by: GHR
 Date: OCT 2020

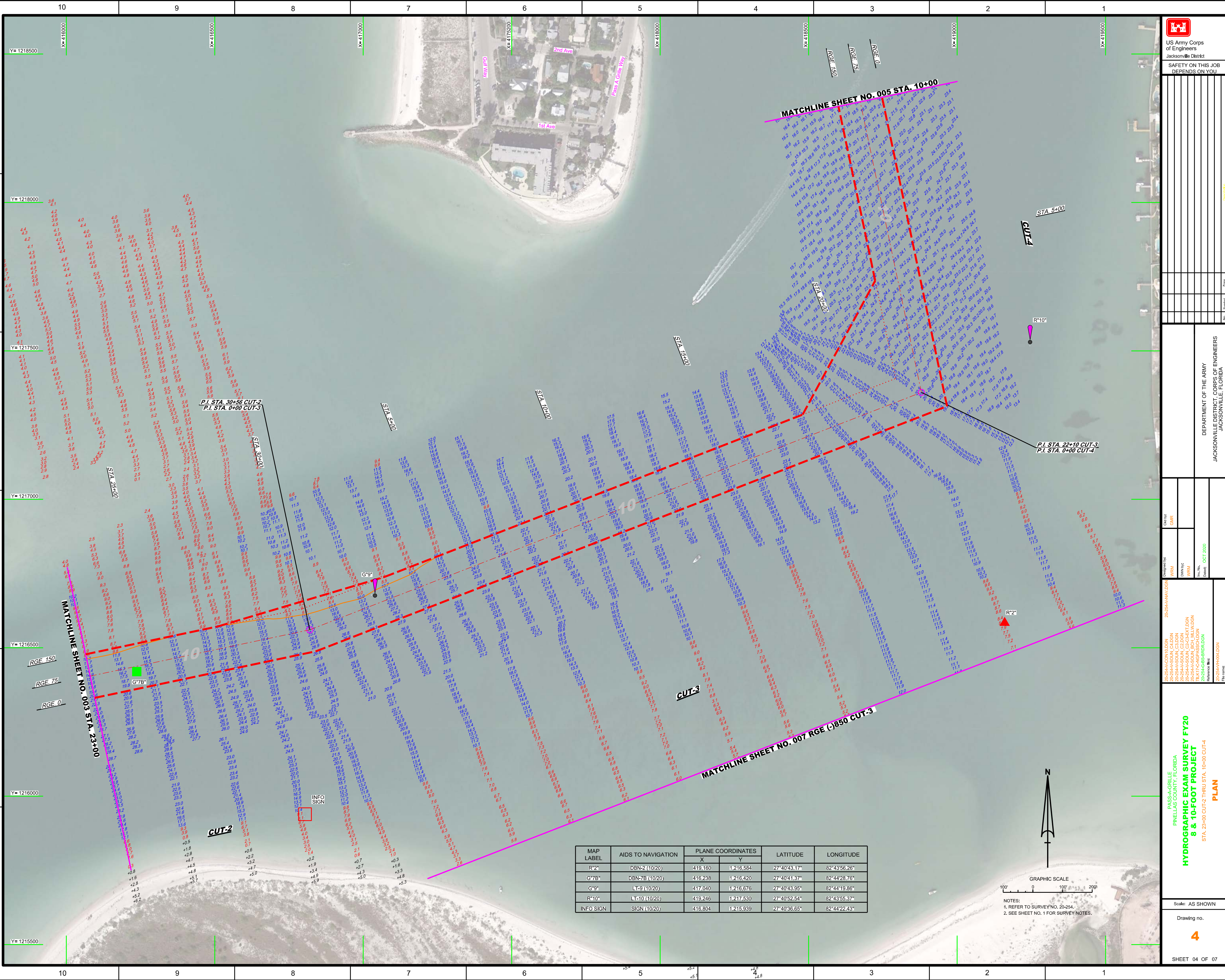
PASSA-GRILLE
 PINELLAS COUNTY, FLORIDA
HYDROGRAPHIC EXAM SURVEY FY20
8 & 10-FOOT PROJECT
 STA. 32+00 CUT-1 THRU STA. 23+00 CUT-2
PLAN

MAP LABEL	AIDS TO NAVIGATION	PLANE COORDINATES		LATITUDE	LONGITUDE
		X	Y		
G7*	L7A (10/20)	4137489	1215430	27°40'31.42"	82°44'56.48"
G7A*	DBN-7A (10/20)	415205	1216189	27°40'39.02"	82°44'40.23"



NOTES:
 1. REFER TO SURVEY NO. 20-354.
 2. SEE SHEET NO. 1 FOR SURVEY NOTES.

Scale: AS SHOWN
 Drawing no.

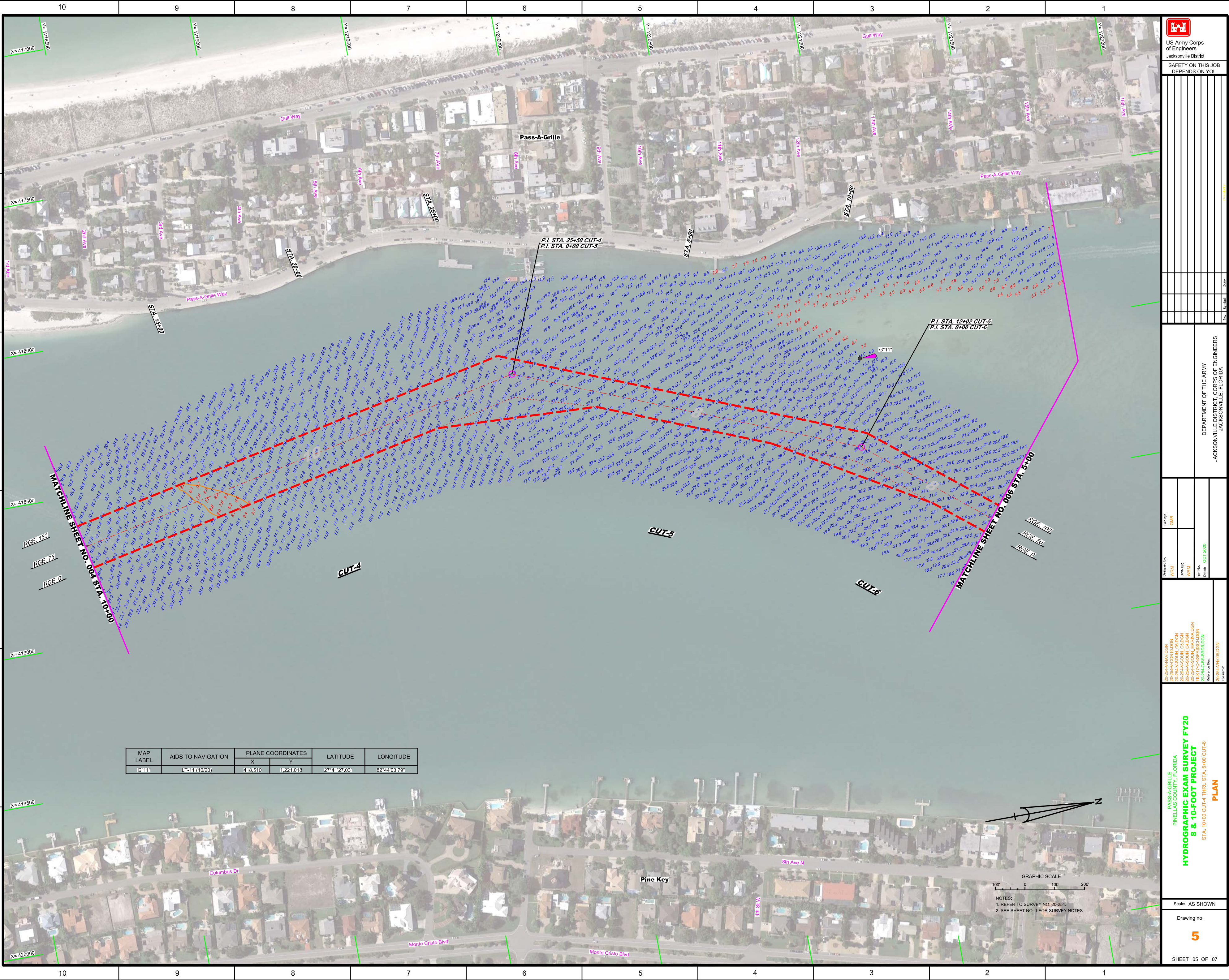


Checked by:	GHR
Designed by:	WRM
Drawn by:	WRM
Issue Date:	OCT 2020
Reference Map:	20-254-PM-RK-01-DGN
	20-254-PM-RK-02-DGN
	20-254-PM-RK-03-DGN
	20-254-PM-RK-04-DGN
	20-254-PM-RK-05-DGN
	20-254-PM-RK-06-DGN
	20-254-PM-RK-07-DGN
	20-254-PM-RK-08-DGN
	20-254-PM-RK-09-DGN
	20-254-PM-RK-10-DGN
	20-254-PM-RK-11-DGN
	20-254-PM-RK-12-DGN
	20-254-PM-RK-13-DGN
	20-254-PM-RK-14-DGN
	20-254-PM-RK-15-DGN
	20-254-PM-RK-16-DGN
	20-254-PM-RK-17-DGN
	20-254-PM-RK-18-DGN
	20-254-PM-RK-19-DGN
	20-254-PM-RK-20-DGN
	20-254-PM-RK-21-DGN
	20-254-PM-RK-22-DGN
	20-254-PM-RK-23-DGN
	20-254-PM-RK-24-DGN
	20-254-PM-RK-25-DGN
	20-254-PM-RK-26-DGN
	20-254-PM-RK-27-DGN
	20-254-PM-RK-28-DGN
	20-254-PM-RK-29-DGN
	20-254-PM-RK-30-DGN
	20-254-PM-RK-31-DGN
	20-254-PM-RK-32-DGN
	20-254-PM-RK-33-DGN
	20-254-PM-RK-34-DGN
	20-254-PM-RK-35-DGN
	20-254-PM-RK-36-DGN
	20-254-PM-RK-37-DGN
	20-254-PM-RK-38-DGN
	20-254-PM-RK-39-DGN
	20-254-PM-RK-40-DGN
	20-254-PM-RK-41-DGN
	20-254-PM-RK-42-DGN
	20-254-PM-RK-43-DGN
	20-254-PM-RK-44-DGN
	20-254-PM-RK-45-DGN
	20-254-PM-RK-46-DGN
	20-254-PM-RK-47-DGN
	20-254-PM-RK-48-DGN
	20-254-PM-RK-49-DGN
	20-254-PM-RK-50-DGN

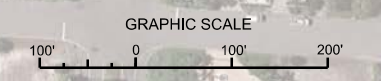
PASSA-CRILLE
PINELLAS COUNTY, FLORIDA
HYDROGRAPHIC EXAM PROJECT FY20
8 & 10-FOOT PROJECT
STA. 23+00 CUT-2 THRU STA. 10+00 CUT-4
PLAN

MAP LABEL	AIDS TO NAVIGATION	PLANE COORDINATES		LATITUDE	LONGITUDE
		X	Y		
R*2"	DBN-2 (10/20)	419.160	1,216.584	27°40'43.17"	82°43'56.26"
G*7B"	DBN-7B (10/20)	416.238	1,216.420	27°40'41.37"	82°44'28.76"
G*9"	LT-9 (10/20)	417.040	1,216.676	27°40'43.95"	82°44'19.86"
R*10"	LT-10 (10/20)	419.246	1,217.630	27°40'52.64"	82°43'55.37"
INFO SIGN	SIGN (10/20)	416.804	1,215.939	27°40'36.65"	82°44'22.43"

GRAPHIC SCALE
1" = 100'
0 100 200
NOTES:
1. REFER TO SURVEY NO. 20-254.
2. SEE SHEET NO. 1 FOR SURVEY NOTES.



MAP LABEL	AIDS TO NAVIGATION	PLANE COORDINATES		LATITUDE	LONGITUDE
		X	Y		
G11	1451 (10/20)	418510	1221018	27°41'27.03"	82°44'03.79"



NOTES:
 1. REFER TO SURVEY NO. 20-254.
 2. SEE SHEET NO. 1 FOR SURVEY NOTES.

US Army Corps of Engineers
 Jacksonville District

**SAFETY ON THIS JOB
 DEPENDS ON YOU**

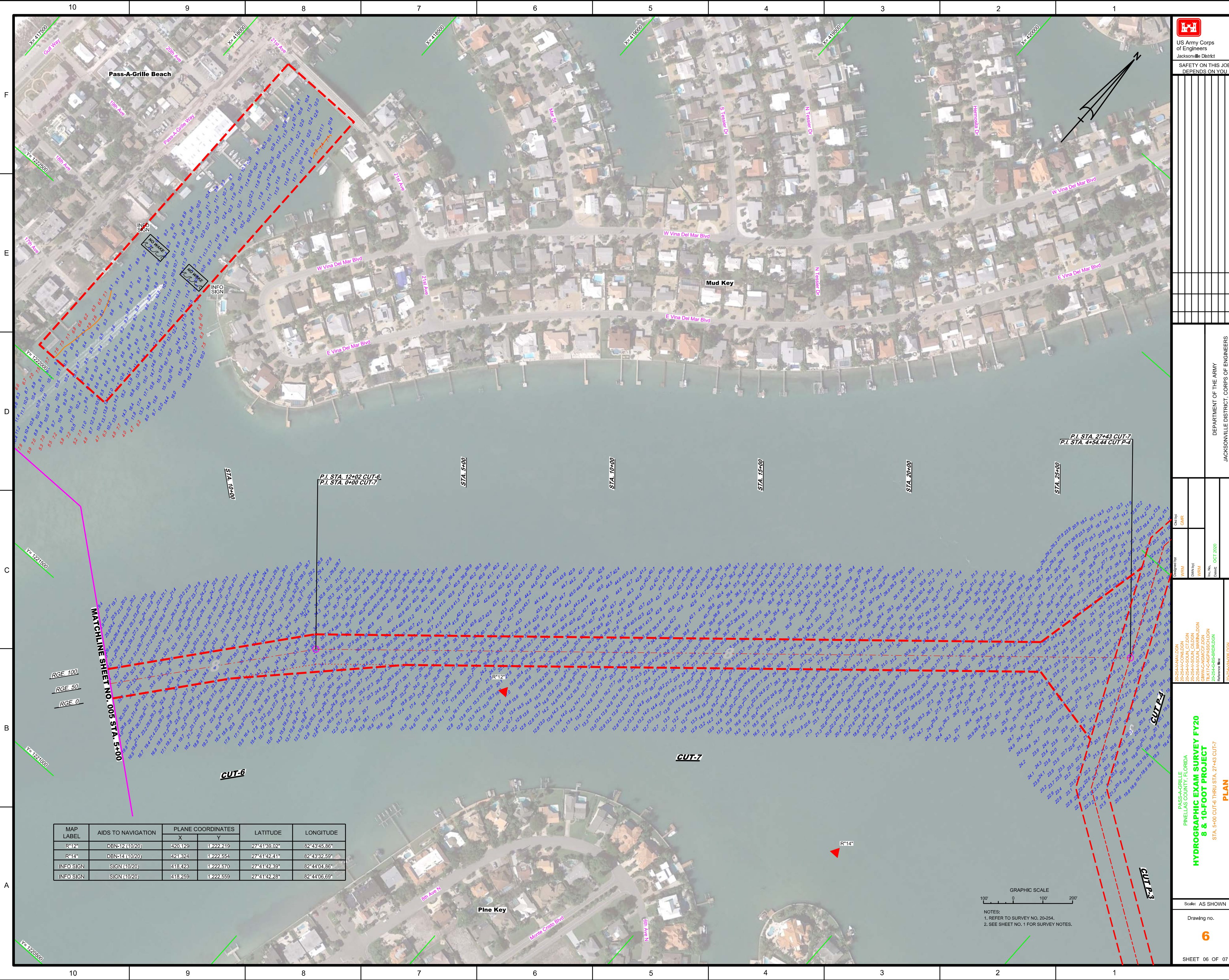
DEPARTMENT OF THE ARMY
 JACKSONVILLE DISTRICT, CORPS OF ENGINEERS
 JACKSONVILLE, FLORIDA

Drawn by: WRM Checked by: WRM Date: OCT 2020	Scale: AS SHOWN Drawing no. 5 SHEET 05 OF 07
--	---

PASS-A-GRIFFIN
 PINELAS COUNTY, FLORIDA

**HYDROGRAPHIC EXAM SURVEY FY20
 8 & 10-FOOT PROJECT**

STA. 10+00 CUT-4 THRU STA. 5+00 CUT-6
PLAN



US Army Corps of Engineers
Jacksonville District

SAFETY ON THIS JOB
DEPENDS ON YOU

DEPARTMENT OF THE ARMY
JACKSONVILLE DISTRICT, CORPS OF ENGINEERS
JACKSONVILLE, FLORIDA

Checked By:	GHR
Designed By:	WRM
Drawn By:	WRM
Field Check:	OCT 2020

Pinellas County, Florida
HYDROGRAPHIC EXAM SURVEY FY20
8 & 10-FOOT PROJECT
STA. 5+00 CUT-6 THRU STA. 27+43 CUT-7
PLAN

Scale: AS SHOWN

Drawing no. **6**

SHEET 06 OF 07

MAP LABEL	AIDS TO NAVIGATION	PLANE COORDINATES		LATITUDE	LONGITUDE
		X	Y		
R"12"	DBN-12 (10/20)	420.129	12222.219	27°41'39.02"	82°43'45.86"
R"14"	DBN-14 (10/20)	421.824	12222.554	27°41'42.41"	82°43'32.59"
INFO SIGN	SIGN (10/20)	418.423	12222.570	27°41'42.89"	82°44'04.86"
INFO SIGN	SIGN (10/20)	418.259	12222.559	27°41'42.28"	82°44'06.69"

GRAPHIC SCALE
Scale: 1" = 100'

NOTES:
1. REFER TO SURVEY NO. 20-254.
2. SEE SHEET NO. 1 FOR SURVEY NOTES.

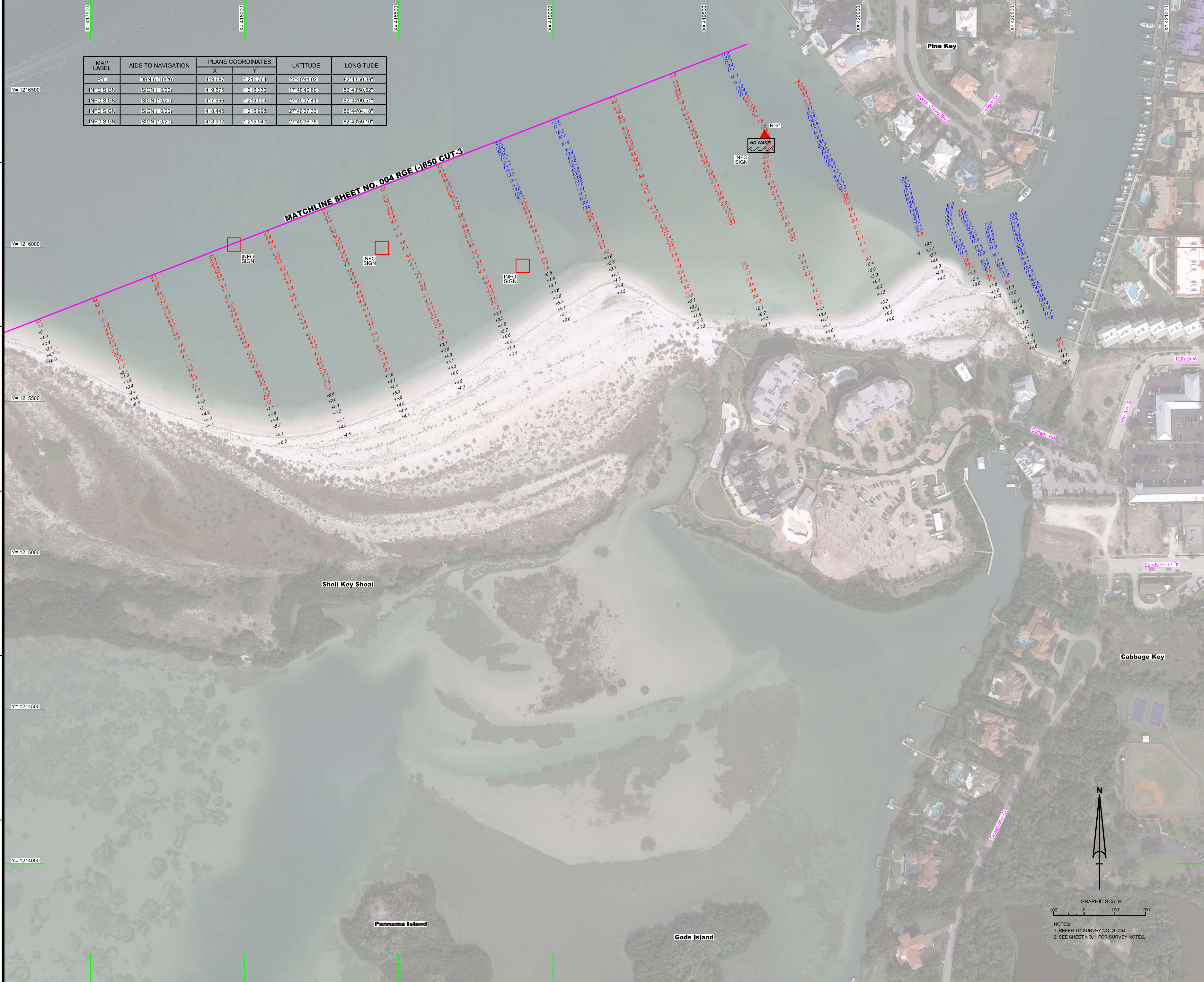
MAP LABEL	AIDS TO NAVIGATION	PLANE COORDINATES		LATITUDE	LONGITUDE
		X	Y		
R6*	DBN-5 (10/20)	419.687	11216.354	27°40'41.02"	82°43'50.39"
INFO SIGN	SIGN (10/20)	419.675	11216.330	27°40'40.69"	82°43'50.52"
INFO SIGN	SIGN (10/20)	417.956	11216.009	27°40'37.41"	82°44'09.51"
INFO SIGN	SIGN (10/20)	418.445	11215.998	27°40'37.83"	82°44'04.18"
INFO SIGN	SIGN (10/20)	418.902	11215.940	27°40'38.76"	82°43'59.10"

MATCHLINE SHEET NO. 004 RGE (-1850 CUT-3)

US Army Corps of Engineers
Jacksonville District

SAFETY ON THIS JOB
DEPENDS ON YOU

--	--	--	--	--	--	--	--	--	--	--	--	--	--	--	--	--	--	--	--



GRAPHIC SCALE
100' 0 100' 200'

NOTES:
1. REFER TO SURVEY NO. 20-254.
2. SEE SHEET NO. 1 FOR SURVEY NOTES.

DEPARTMENT OF THE ARMY
JACKSONVILLE DISTRICT, CORPS OF ENGINEERS
JACKSONVILLE, FLORIDA

Designed By: WRM
Checked By: GHR
Drawn By: WRM
Reviewed By: WRM
Date: OCT 2020
Reference File: 20-254-8-BB-RI-01.DGN
File Name: 20-254-8-07.DGN

**HYDROGRAPHIC EXAM SURVEY FY20
8 & 10-FOOT PROJECT**
AREA SOUTH OF CUT-3
PLAN