

HORSESHOE COVE DIXIE COUNTY, FLORIDA HYDROGRAPHIC EXAM SURVEY FY20 6-FOOT PROJECT

SURVEY NOTES

- REFER TO SURVEY NO. 20-204.
- TIDAL REDUCTIONS WERE OBTAINED UTILIZING REAL-TIME KINEMATIC (RTK) GPS AND A HYPACK KINEMATIC TIDAL DATUM MODEL NAMED: SPC-FL-NORTH_20161026.KTD
- ALL ELEVATIONS ARE BELOW THE CHART DATUM UNLESS PRECEDED BY A (+) SIGN.
- PLANE COORDINATES ARE BASED ON THE LAMBERT CONFORMAL CONIC PROJECTION FOR THE NORTH ZONE OF FLORIDA (0903) AND REFERENCED TO NORTH AMERICAN DATUM OF 1983 (NAD83).
- ALL STATIONING REFERS TO THE CENTERLINE OF THE CHANNEL.
- DEPTHS DEPICTED BY THIS SURVEY ARE REFERENCED TO MEAN LOWER LOW WATER (MLLW) TIDAL DATUM, TIDAL EPOCH 1983-2001, AS REPORTED BY THE NATIONAL OCEANIC AND ATMOSPHERIC ADMINISTRATION (NOAA). NOAA'S VDATUM MODEL WAS USED AND CALIBRATED TO THE PUBLISHED MLLW HEIGHTS OF THE BENCH MARKS ASSOCIATED WITH THE TIDE GAUGE SITE SPECIFIED BELOW:
NOAA TIDAL STATION 872-7648, HORSESHOE POINT, FL
- THIS SURVEY WAS PERFORMED USING REAL-TIME KINEMATIC (RTK) GPS POSITIONING WITH THE FOLLOWING REFERENCE BASE LOCATION:
REFERENCE BASE LOCATED AT "HCBH-5" (OPUS PID: BBFJ80)
TIDE STAFF LOCATED ON WOODEN DOCK SET FROM "HCBH-5"
- VERTICAL MEASUREMENTS WERE MADE USING ROSS MODEL 839C SMART SOUNDER WITH A DUAL-FREQUENCY (28/200 KHZ) SINGLE-BEAM TRANSDUCER. ALL SOUNDINGS SHOWN ARE IN HIGH FREQUENCY.
- | VESSEL | DATE OF SURVEY | CUT |
|--------|----------------|---------------------------------|
| SB-36 | 19-20 MAY 2020 | ENTRANCE CHANNEL, TURNING BASIN |
- AIDS TO NAVIGATION WERE LOCATED DURING THIS SURVEY.
- THE INFORMATION DEPICTED ON THIS MAP REPRESENTS THE RESULTS OF SURVEYS MADE ON THE DATES INDICATED ABOVE AND CAN ONLY BE CONSIDERED AS INDICATING THE GENERAL CONDITIONS AT THAT TIME. THIS CHART IS SOLELY FOR THE DISTRIBUTION OF AVAILABLE DEPTHS AT THE TIME OF THE SURVEY.
- SURVEY ACCURACY PERFORMANCE STANDARDS, QUALITY CONTROL, AND QUALITY ASSURANCE REQUIREMENTS WERE FOLLOWED DURING THIS SURVEY IN ACCORDANCE WITH USACE EM 1110-2-1003, HYDROGRAPHIC SURVEYING, 30 NOV 2013.

LEGEND	
	MONUMENT
	LIGHTED BEACON
	GREEN DAYBEACON
	RED DAYBEACON
	RED LIGHTED BUOY
	GREEN LIGHTED BUOY
	CAN BUOY
	NUN BUOY
	TIDE STAFF
	PROJECT DEPTH

US Army Corps of Engineers
Jacksonville District
SAFETY ON THIS JOB DEPENDS ON YOU

DESIGNED BY: WRM, JRM, JSM, JEM, JEM, JEM
DRAWN BY: WRM, JRM, JSM, JEM, JEM, JEM
FILE NAME: HORSCH-BS-BR18.DGN
DATE: MAY 2020
PROJECT: HORSCH-BS-BR18.DGN

DEPARTMENT OF THE ARMY
JACKSONVILLE DISTRICT, CORPS OF ENGINEERS
JACKSONVILLE, FLORIDA

HORSESHOE COVE
DIXIE COUNTY, FLORIDA
**HYDROGRAPHIC EXAM SURVEY FY20
6-FOOT PROJECT**
INDEX, LOCATION AND VICINITY
MAP

Scale: AS SHOWN
Drawing no. **1**
SHEET 01 OF 18



US Army Corps of Engineers
Jacksonville District

SAFETY ON THIS JOB
DEPENDS ON YOU

Zone	U.S. Zone	Zone

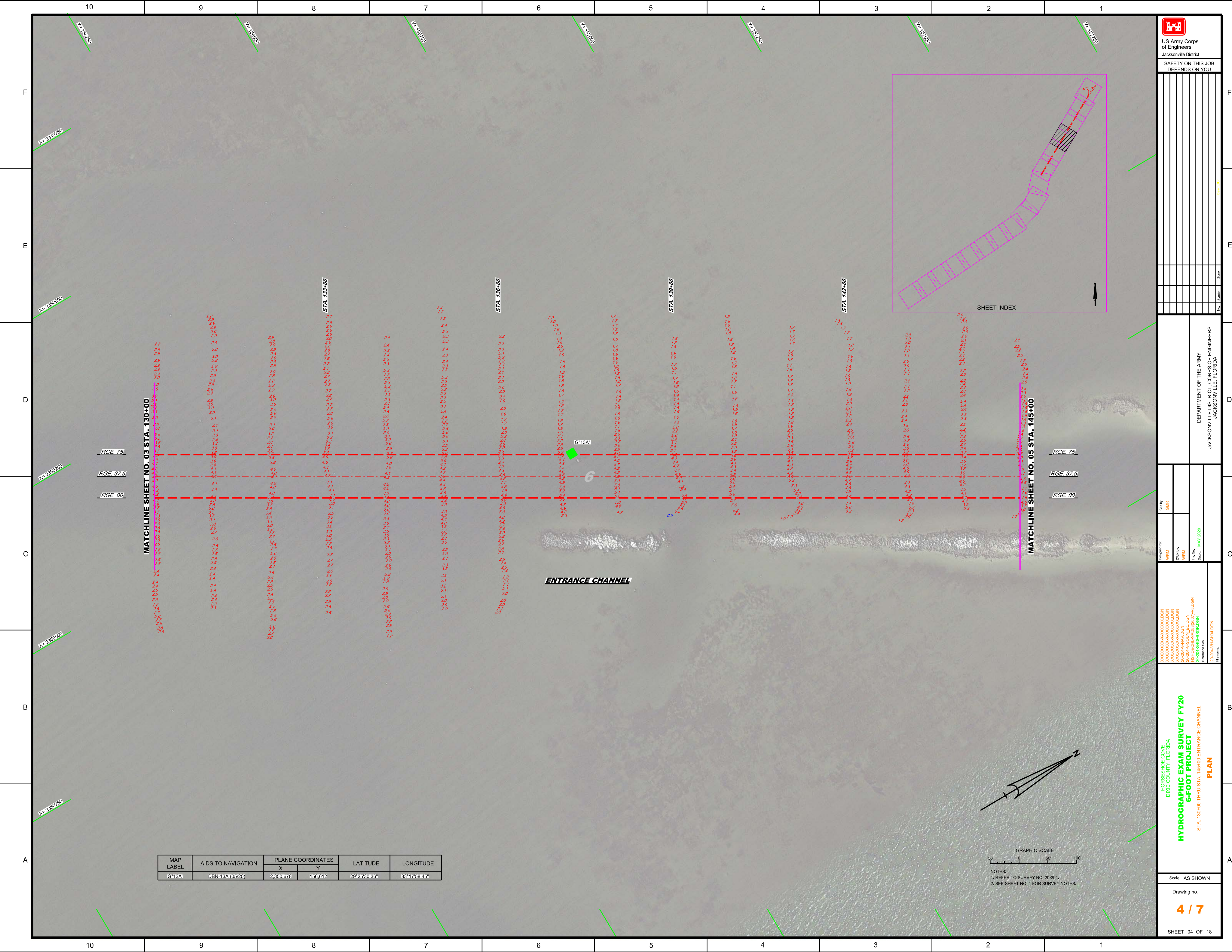
DEPARTMENT OF THE ARMY
JACKSONVILLE DISTRICT, CORPS OF ENGINEERS
JACKSONVILLE, FLORIDA

Check by: GHR
Designed by: WRM
Drawn by: WRM
File No.: M5200
Date: MAY 2020

XXXXXXXXXXXXXXXXXXXX
XXXXXXXXXXXXXXXXXXXX
XXXXXXXXXXXXXXXXXXXX
XXXXXXXXXXXXXXXXXXXX
XXXXXXXXXXXXXXXXXXXX
XXXXXXXXXXXXXXXXXXXX
XXXXXXXXXXXXXXXXXXXX
XXXXXXXXXXXXXXXXXXXX
XXXXXXXXXXXXXXXXXXXX
XXXXXXXXXXXXXXXXXXXX

HYDROGRAPHIC EXAM SURVEY FY20
6-FOOT PROJECT
PLAN
STA. 130+00 THRU STA. 145+00 ENTRANCE CHANNEL

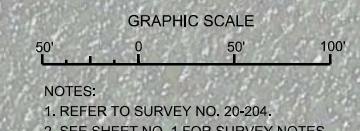
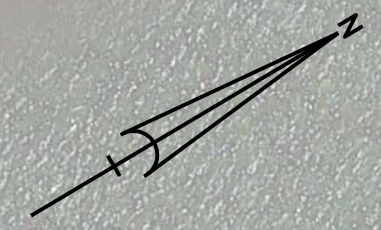
Scale: AS SHOWN
Drawing no.
4 / 7
SHEET 04 OF 18



MATCHLINE SHEET NO. 03 STA. 130+00

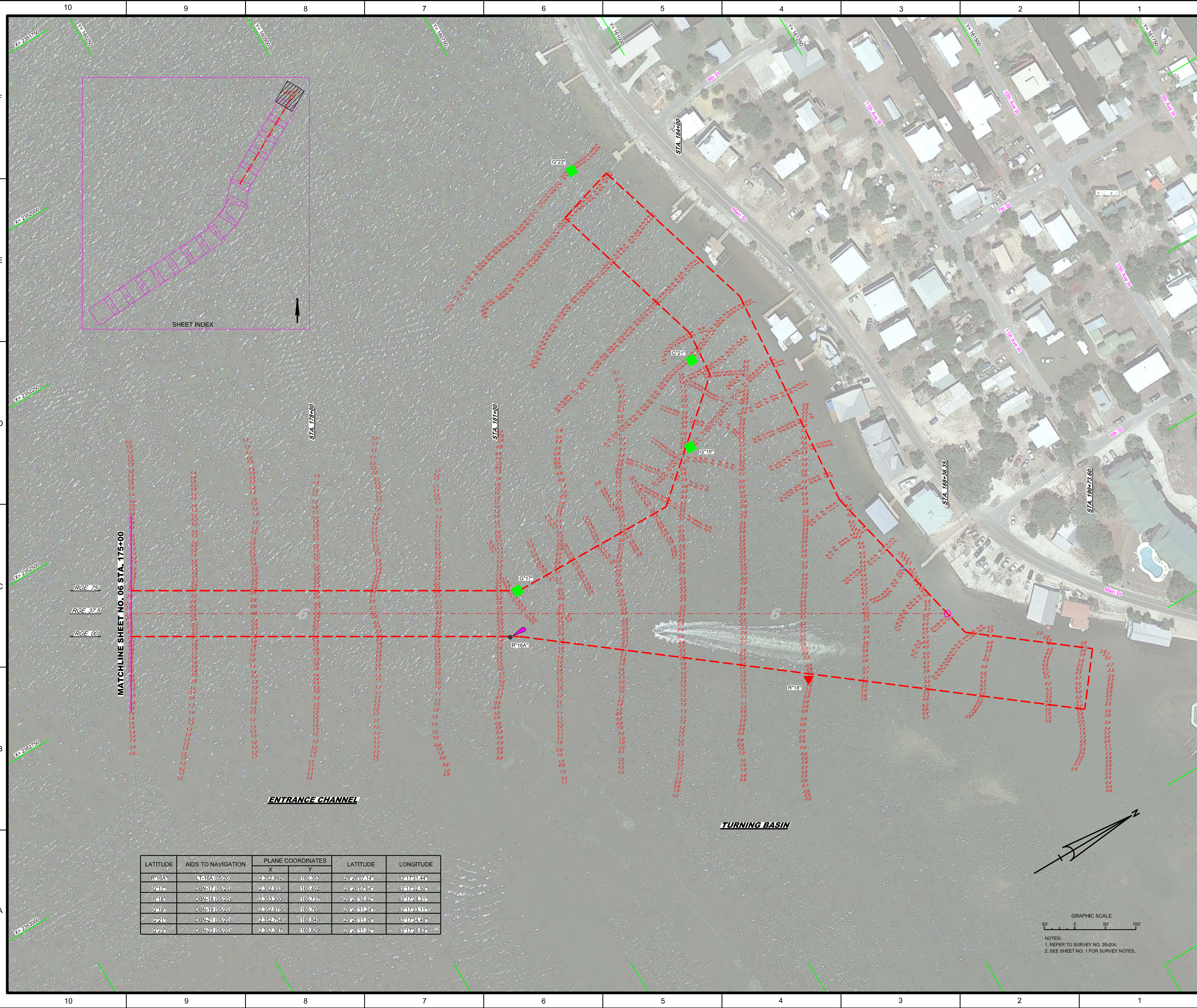
MATCHLINE SHEET NO. 05 STA. 145+00

ENTRANCE CHANNEL



NOTES:
1. REFER TO SURVEY NO. 20-204.
2. SEE SHEET NO. 1 FOR SURVEY NOTES.

MAP LABEL	AIDS TO NAVIGATION	PLANE COORDINATES		LATITUDE	LONGITUDE
		X	Y		
G-13A	DBN-13A (05/20)	2,350,678	156,612	29°25'30.36"	83°17'58.45"



LATITUDE	AIDS TO NAVIGATION	PLANE COORDINATES		LATITUDE	LONGITUDE
		X	Y		
R*16A	L*16A (0520)	2852892	160853	29°26'07.64"	83°17'31.44"
G*17a	DBN-17 (0520)	2852893	160402	29°26'07.64"	83°17'32.50"
R*18	DBN-18 (0520)	2852800	160747	29°26'10.92"	83°17'28.31"
G*19	DBN-19 (0520)	2852875	160765	29°26'11.24"	83°17'33.11"
G*21	DBN-21 (0520)	2852754	160840	29°26'11.69"	83°17'34.48"
G*23	DBN-23 (0520)	2852837	160829	29°26'11.92"	83°17'38.63"



NOTES:
1. REFER TO SURVEY NO. 20-204.
2. SEE SHEET NO. 1 FOR SURVEY NOTES.