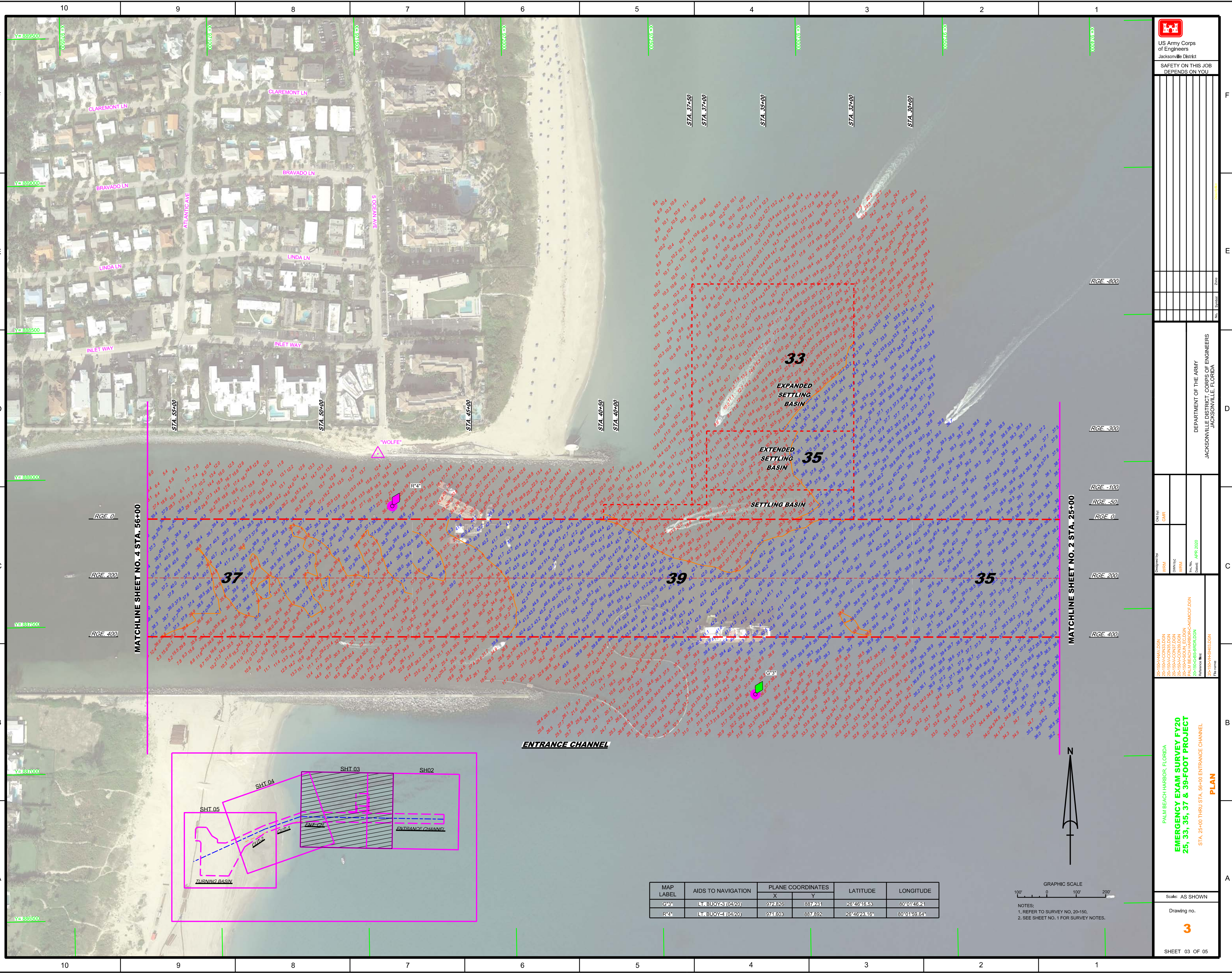
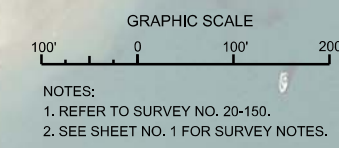
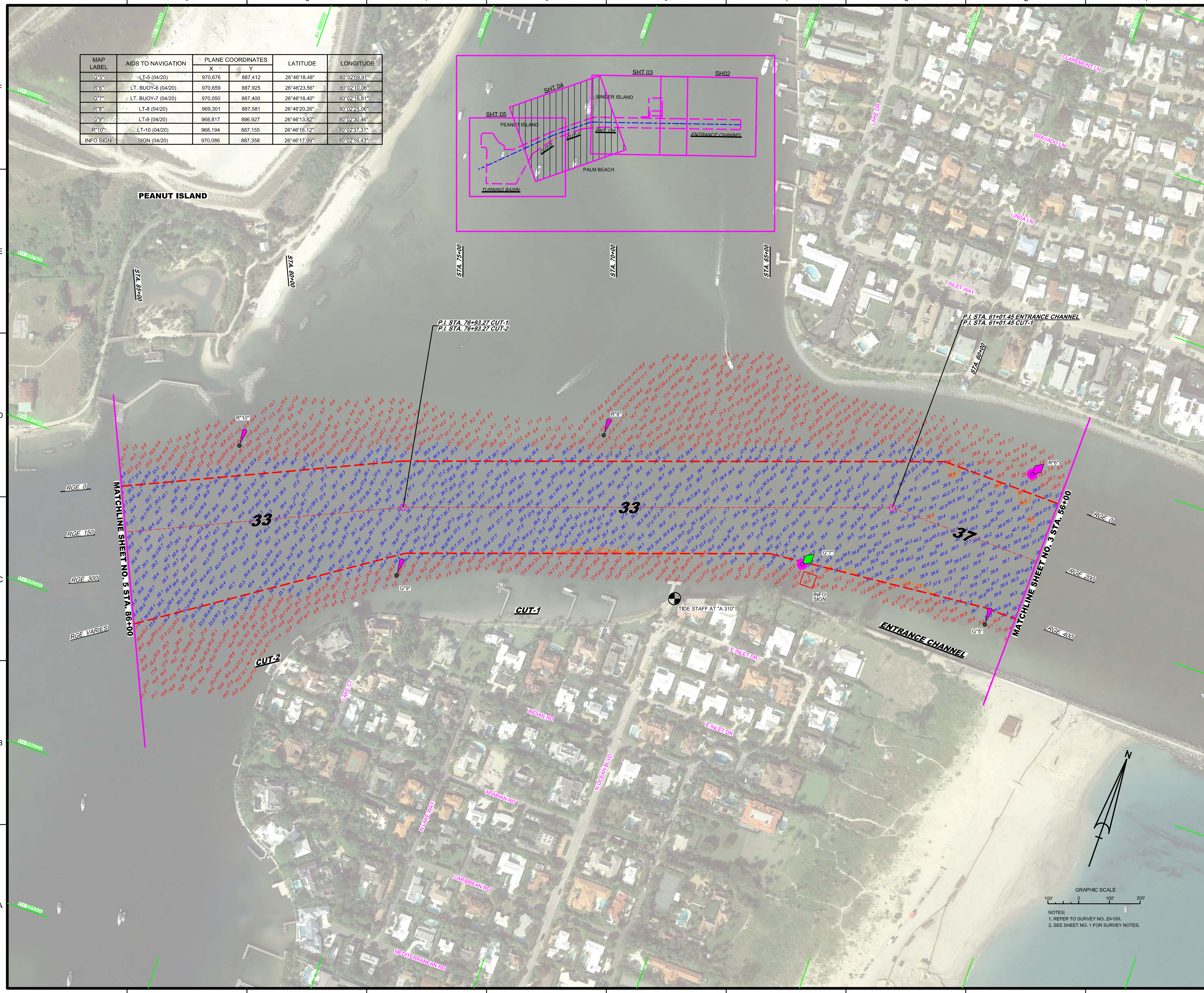
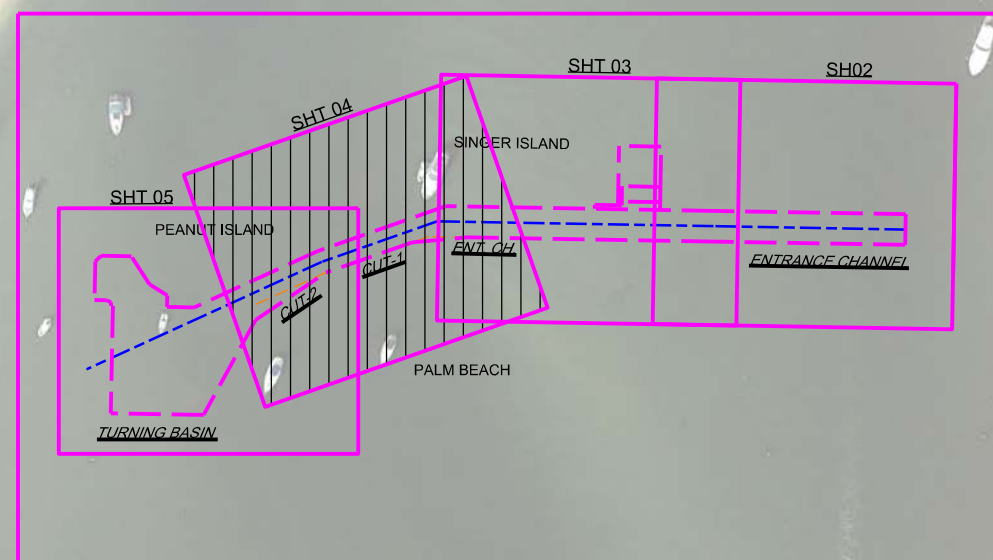

		US Army Corps of Engineers Jacksonville District	
SAFETY ON THIS JOB DEPENDS ON YOU			
Drawn by: WJM Check by: GJR		Date: APR 2021	
Project: 20-150-AAN/DGN 20-150-A50UN_EC/DGN PALM BEACH HARBOR-C&MS/MCF/DGN 20-150-A50UN-SH/DGN		Reference: 11-150-A50UN-SH/DGN File name: 20-150-A50UN-SH/DGN	
Department of the Army Jacksonville District, Corps of Engineers Jacksonville, Florida			
Drawing no. 2			
Scale: AS SHOWN			
SHEET 02 OF 05			



MAP LABEL	AIDS TO NAVIGATION	PLANE COORDINATES		LATITUDE	LONGITUDE
		X	Y		
G*5	LT-5 (04/20)	970.676	887.412	26°46'18.48"	80°02'09.91"
R*6	LT. BUOY-6 (04/20)	970.859	887.925	26°46'23.56"	80°02'10.06"
G*7	LT. BUOY-7 (04/20)	970.050	887.400	26°46'18.40"	80°02'16.81"
R*8	LT-8 (04/20)	969.301	887.581	26°46'20.26"	80°02'25.06"
G*9	LT-9 (04/20)	968.817	886.927	26°46'13.82"	80°02'30.46"
R*10	LT-10 (04/20)	968.194	887.155	26°46'16.12"	80°02'37.31"
INFO SIGN	SIGN (04/20)	970.086	887.358	26°46'17.99"	80°02'16.43"



 <p>US Army Corps of Engineers Jacksonville District</p>		<p>SAFETY ON THIS JOB DEPENDS ON YOU</p>			
<p>20-1B04-CONV2.DGN 20-1B04-CONV2.ZON 20-1B04-CONV2.DGN 20-1B04-CONV2.ZON 20-1B04-SOULI_EG.DGN 20-1B04-SOULI_CL.DGN 20-1B04-SOULI_EG.DGN 20-1B04-SOULI_CL.DGN PALM BEACH HARBOR-CA-NGM/CCE.DGN 20-1B04-GB-BRD/DLGN</p>		<p>Designed by: WRM</p> <p>Drawn by: WRM</p>	<p>Check by: GMR</p>	<p>DEPARTMENT OF THE ARMY JACKSONVILLE DISTRICT, CORPS OF ENGINEERS JACKSONVILLE, FLORIDA</p>	
<p>EMERGENCY EXAM SURVEY FY20 25, 33, 35, 37 & 39-FOOT PROJECT</p> <p>STA. 58+00 ENTRANCE CHANNEL THRU STA. 86+00 CUT-2</p>		<p>Rev. No. APR 2020</p> <p>Date: APR 2020</p>			
<p>PLAN</p>		<p>Project No. 20-1B04-CONV2.DGN Drawing No. 20-1B04-CONV2.ZON File name: 20-1B04-CONV2.DGN</p>			
<p>Scale: AS SHOWN</p>					
<p>Drawing no.</p>					
<p>4</p>					
<p>SHEET 04 OF 05</p>					

