

ANCLOTE RIVER PASCO COUNTY, FLORIDA HYDROGRAPHIC EXAM SURVEY 9-FOOT PROJECT FY20

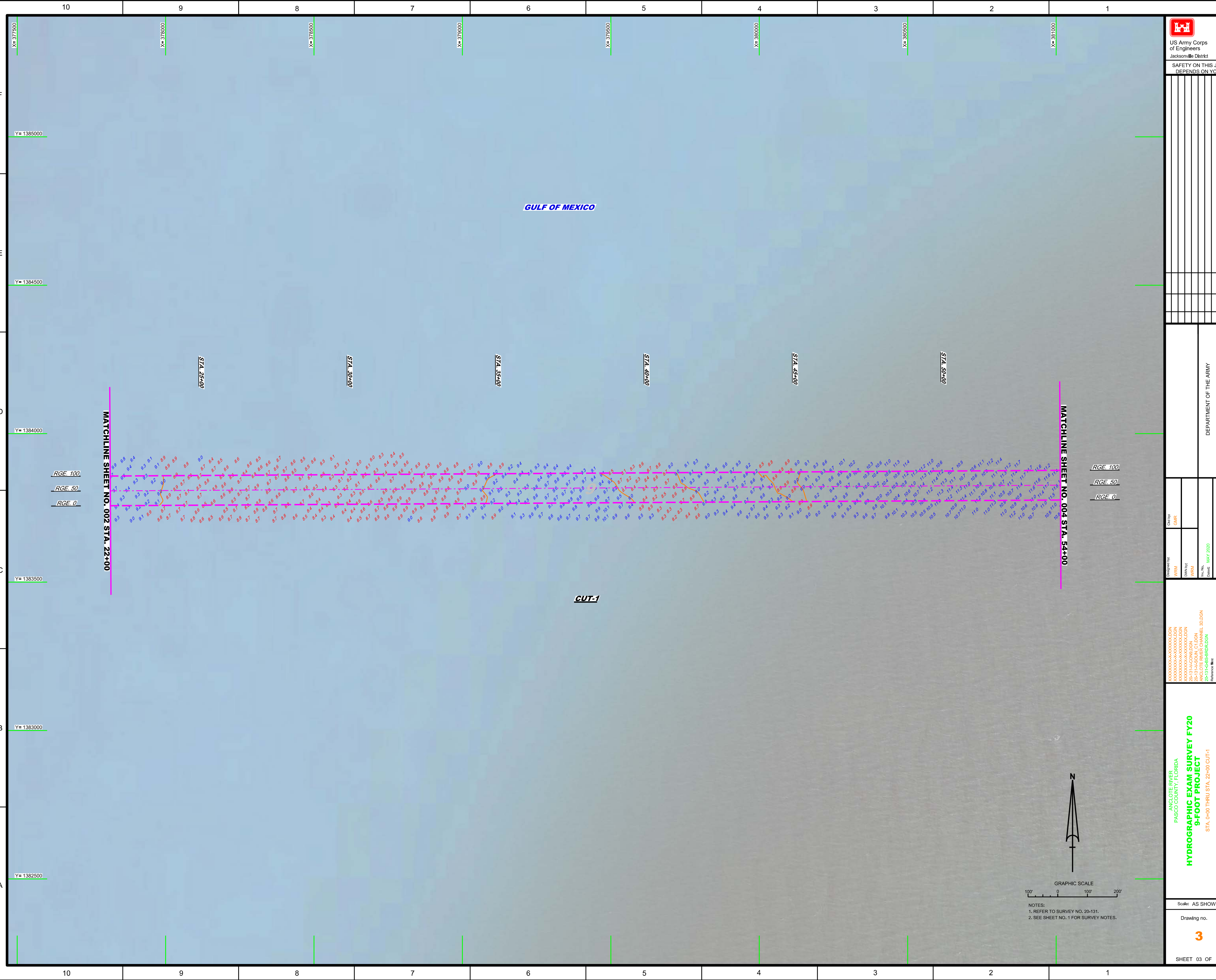
SURVEY NOTES

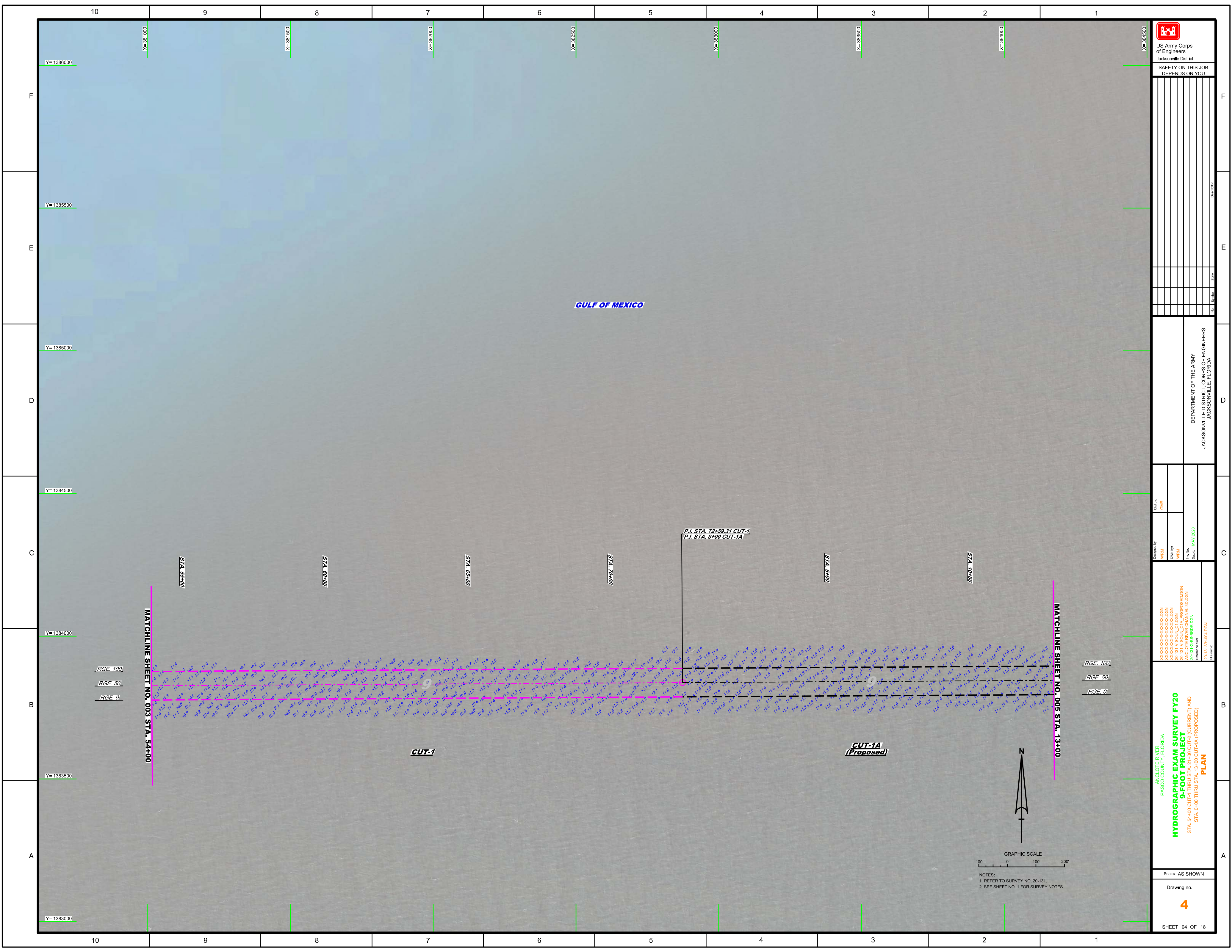
- REFER TO SURVEY NO. 20-131.
 - DEPTHS DEPICTED BY THIS SURVEY ARE REFERENCED TO MLLW, TIDAL EPOCH 1983-2001 AS REPORTED BY THE NATIONAL OCEANIC AND ATMOSPHERIC ADMINISTRATION (NOAA). A MODIFIED VERSION OF NOAA'S VDATUM MODEL WAS USED TO CALIBRATE TO THE PUBLISHED MLLW HEIGHTS OF THE BENCHMARK BELOW:
NOAA TIDAL STATION 872 6924 "LEISNER" (PID: AL0818)
 - TIDAL REDUCTIONS WERE OBTAINED UTILIZING A REAL-TIME KINEMATIC (RTK) GPS AND REFERENCED TO MLLW UTILIZING A HYPACK KINEMATIC TIDE DATUM (KTD) MODEL. FILE NAME IS: "SPC-FL-WEST-2010-12-07.KTD".
 - ALL ELEVATIONS ARE BELOW THE CHART DATUM UNLESS PRECEDED BY A (+) SIGN.
 - PLANE COORDINATES ARE BASED ON THE TRANSVERSE MERCATOR PROJECTION FOR THE WEST ZONE OF FLORIDA AND REFERENCED TO NORTH AMERICAN DATUM OF 1983 (NAD83).
 - ALL STATIONING REFERS TO THE CENTERLINE OF THE CHANNEL.
 - THIS SURVEY WAS PERFORMED USING REAL-TIME KINEMATIC (RTK) GPS POSITIONING WITH THE FOLLOWING REFERENCE BASE LOCATION:
REFERENCE BASE LOCATED AT "872 6904 C" (PID: DM3828)
 - VERTICAL MEASUREMENTS WERE MADE USING A R2 SONIC 2024 ULTI-BEAM OPERATING AT 300 KHZ. ALL SOUNDINGS SHOWN ARE IN HIGH FREQUENCY.
 - VESSEL
 - DATE OF SURVEY
 - CUT
- | VESSEL | DATE OF SURVEY | CUT |
|--------|----------------|-------------------|
| SB-52 | 20 MAY 2020 | CUTS 2, 2A, 3, TB |
| SB-52 | 21 MAY 2020 | CUTS 1, 1A, 3A, 4 |
| SB-52 | 27 MAY 2020 | CUTS 5 THRU 14 |
- AIDS TO NAVIGATION WERE LOCATED DURING THIS SURVEY.
 - THE INFORMATION DEPICTED ON THIS MAP REPRESENTS THE RESULTS OF SURVEYS MADE ON THE DATES INDICATED ABOVE AND CAN ONLY BE CONSIDERED AS INDICATING THE GENERAL CONDITIONS AT THAT TIME. THIS CHART IS SOLELY FOR THE DISTRIBUTION OF AVAILABLE DEPTHS AT THE TIME OF THE SURVEY.
 - SURVEY ACCURACY PERFORMANCE STANDARDS, QUALITY CONTROL, AND QUALITY ASSURANCE REQUIREMENTS WERE FOLLOWED DURING THIS SURVEY IN ACCORDANCE WITH USACE EM 1110-2-1003, HYDROGRAPHIC SURVEYING, 30 NOV 2013.

LEGEND	
	MONUMENT
	LIGHTED BEACON
	GREEN DAYBEACON
	RED DAYBEACON
	RED LIGHTED BUOY
	GREEN LIGHTED BUOY
	CAN BUOY
	NUN BUOY
	TIDE STAFF
	PROJECT DEPTH

US Army Corps of Engineers
Jacksonville District
SAFETY ON THIS JOB
DEPENDS ON YOU

<p>ANCLOTE RIVER PASCO COUNTY, FLORIDA HYDROGRAPHIC EXAM SURVEY FY20 9-FOOT PROJECT INDEX, LOCATION AND VICINITY MAP</p>	<p>DEPARTMENT OF THE ARMY JACKSONVILLE DISTRICT, CORPS OF ENGINEERS JACKSONVILLE, FLORIDA</p>
<p>Scale: AS SHOWN</p>	<p>Drawing no. 1</p>
<p>SHEET 01 OF 18</p>	





US Army Corps of Engineers
 Jacksonville District
 SAFETY ON THIS JOB
 DEPENDS ON YOU

No.	Symbol	Zone

DEPARTMENT OF THE ARMY
 JACKSONVILLE DISTRICT, CORPS OF ENGINEERS
 JACKSONVILLE, FLORIDA

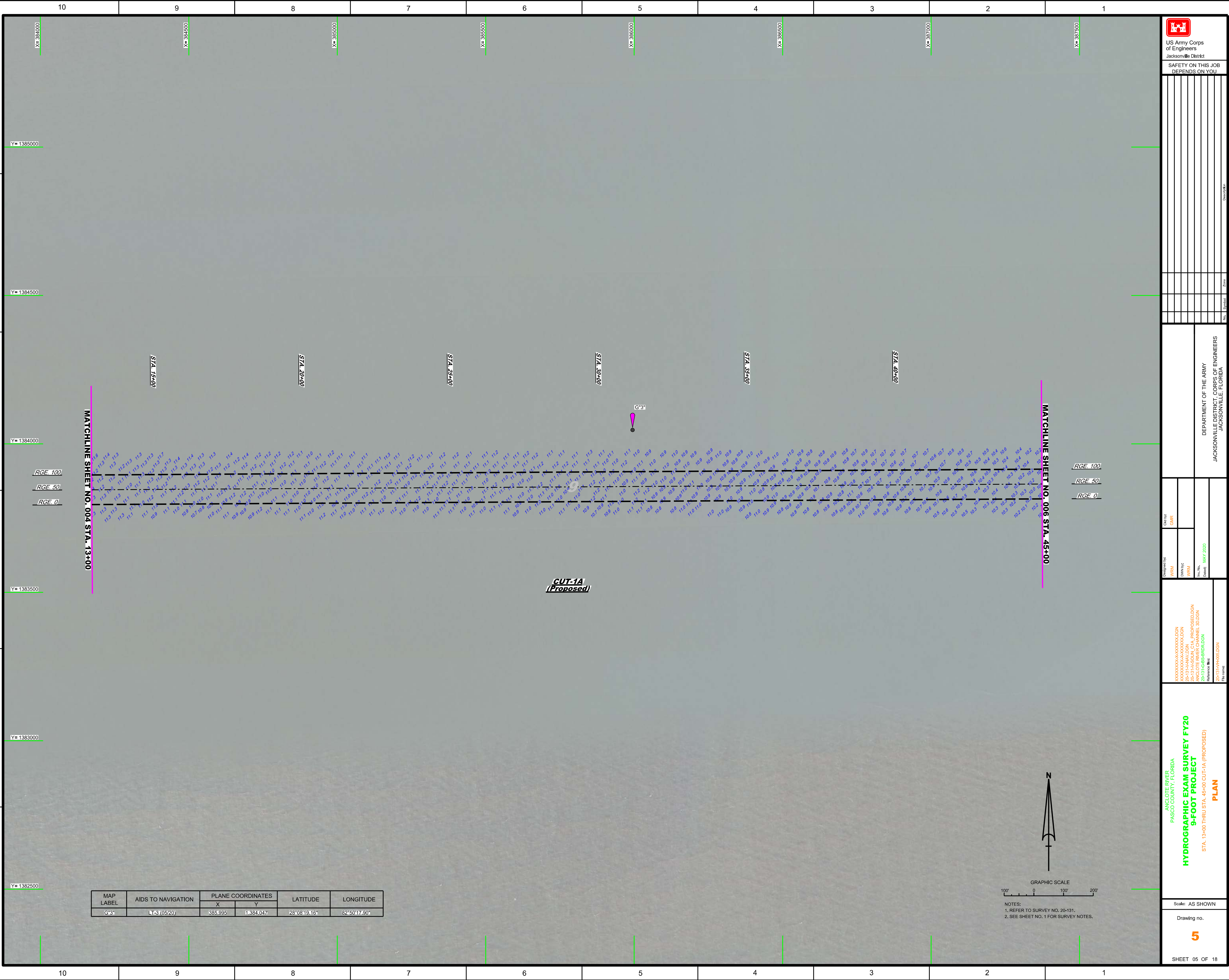
Drawn by: WRM	Checked by: GMR	Design Date: MAY 2020	Project No.: 20-131-HYDROLOGEN
Drawn by: WRM	Checked by: WRM	Design Date: MAY 2020	Project No.: 20-131-HYDROLOGEN
Drawn by: WRM	Checked by: WRM	Design Date: MAY 2020	Project No.: 20-131-HYDROLOGEN

ANGLOTE RIVER
 PASCO COUNTY, FLORIDA
HYDROGRAPHIC EXAM SURVEY FY20
9-FOOT PROJECT
 STA. 54+00 CUT-1 THRU STA. 21+00 CUT-2 (CURRENT) AND
 STA. 0+00 THRU STA. 10+00 CUT-1A (PROPOSED)
PLAN

Scale: AS SHOWN
 Drawing no.
4

SHEET 04 OF 18

GRAPHIC SCALE
 100' 0 100' 200'
 NOTES:
 1. REFER TO SURVEY NO. 20-131.
 2. SEE SHEET NO. 1 FOR SURVEY NOTES.



US Army Corps
of Engineers
Jacksonville District

SAFETY ON THIS JOB
DEPENDS ON YOU

NO.	SYMBOL	ZONE	DESCRIPTION

DEPARTMENT OF THE ARMY
JACKSONVILLE DISTRICT, CORPS OF ENGINEERS
JACKSONVILLE, FLORIDA

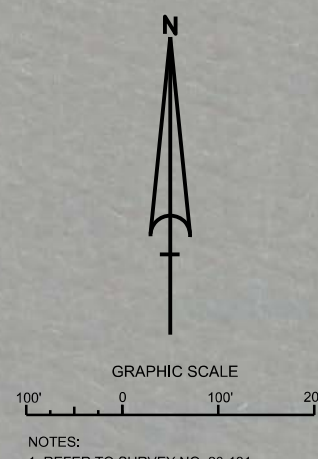
Checked by:	GHR
Designed by:	WRM
Drawn by:	WRM
File No.:	ANGLOTE RIVER CHANNEL 00.DGN
Date:	MAY 2020

Reference files:
20-13-HAV-DGN
20-13-HAV-DGN
20-13-HAV-DGN
20-13-HAV-DGN
20-13-HAV-DGN

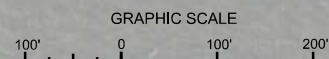
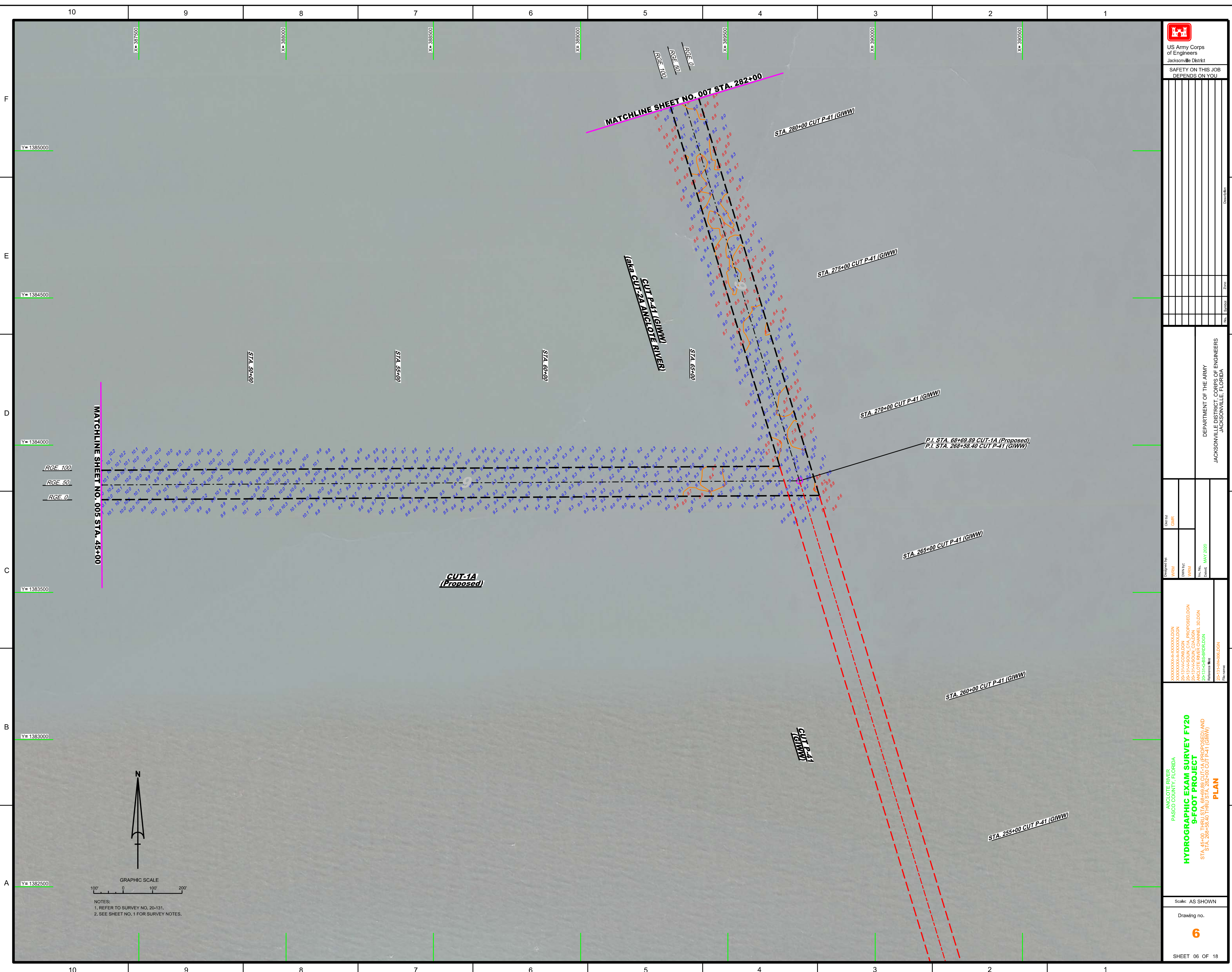
ANGLOTE RIVER
PASCO COUNTY, FLORIDA
HYDROGRAPHIC EXAM SURVEY FY20
9-FOOT PROJECT
STA. 13+00 THRU STA. 45+00 CUT-1A (PROPOSED)
PLAN

Scale: AS SHOWN
Drawing no.
5

MAP LABEL	AIDS TO NAVIGATION	PLANE COORDINATES		LATITUDE	LONGITUDE
		X	Y		
G+3'	LT-3 (05/20)	385,995	1,384,047	28°08'19.16"	82°50'47.90"



NOTES:
1. REFER TO SURVEY NO. 20-131.
2. SEE SHEET NO. 1 FOR SURVEY NOTES.



- NOTES:
 1. REFER TO SURVEY NO. 20-131.
 2. SEE SHEET NO. 1 FOR SURVEY NOTES.

US Army Corps of Engineers
 Jacksonville District
 SAFETY ON THIS JOB DEPENDS ON YOU

No.	Symbol	Zone

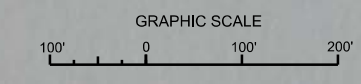
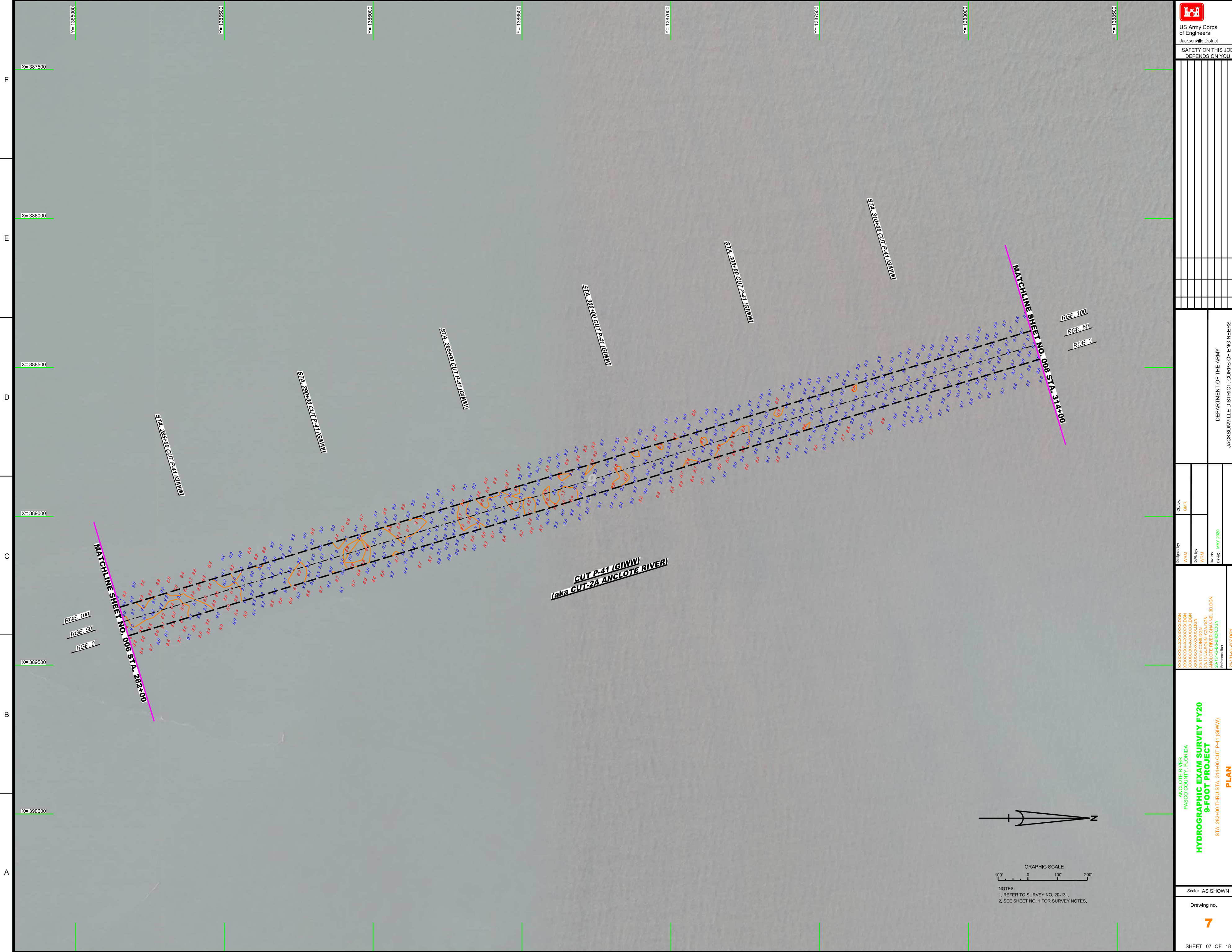
DEPARTMENT OF THE ARMY
 JACKSONVILLE DISTRICT, CORPS OF ENGINEERS
 JACKSONVILLE, FLORIDA

Check by: GHR	Checked by: WRM
Designed by: WRM	Drawn by: WRM
File No: MAY 2020	


XXXXXXXXXXXXXXXXXXXX
 20-131-ANGLOTE_RIVER_CHANNEL_30.DGN
 20-131-ANGLOTE_RIVER_CHANNEL_30.DGN
 20-131-ANGLOTE_RIVER_CHANNEL_30.DGN
 20-131-ANGLOTE_RIVER_CHANNEL_30.DGN
 20-131-ANGLOTE_RIVER_CHANNEL_30.DGN
 20-131-ANGLOTE_RIVER_CHANNEL_30.DGN
 Reference files:
 20-131-ANGLOTE_RIVER_CHANNEL_30.DGN

ANGLOTE RIVER
 PASCO COUNTY, FLORIDA
**HYDROGRAPHIC EXAM SURVEY FY20
 9-FOOT PROJECT**
 STA. 45+00 THRU STA. 68+69.89 CUT-1A (PROPOSED) AND
 STA. 280+50.40 THRU STA. 282+00 CUT P-41 (GIWW)
PLAN

Scale: AS SHOWN
 Drawing no.
6
 SHEET 06 OF 18



NOTES:
 1. REFER TO SURVEY NO. 20-131.
 2. SEE SHEET NO. 1 FOR SURVEY NOTES.



US Army Corps
of Engineers
Jacksonville District

SAFETY ON THIS JOB
DEPENDS ON YOU

Dist.	Symbol	Zones

DEPARTMENT OF THE ARMY
 JACKSONVILLE DISTRICT, CORPS OF ENGINEERS
 JACKSONVILLE, FLORIDA

Designed by: **WRM**
 DWG by: **WRM**
 File No.: **MAY 2020**

Checked by: **GHR**

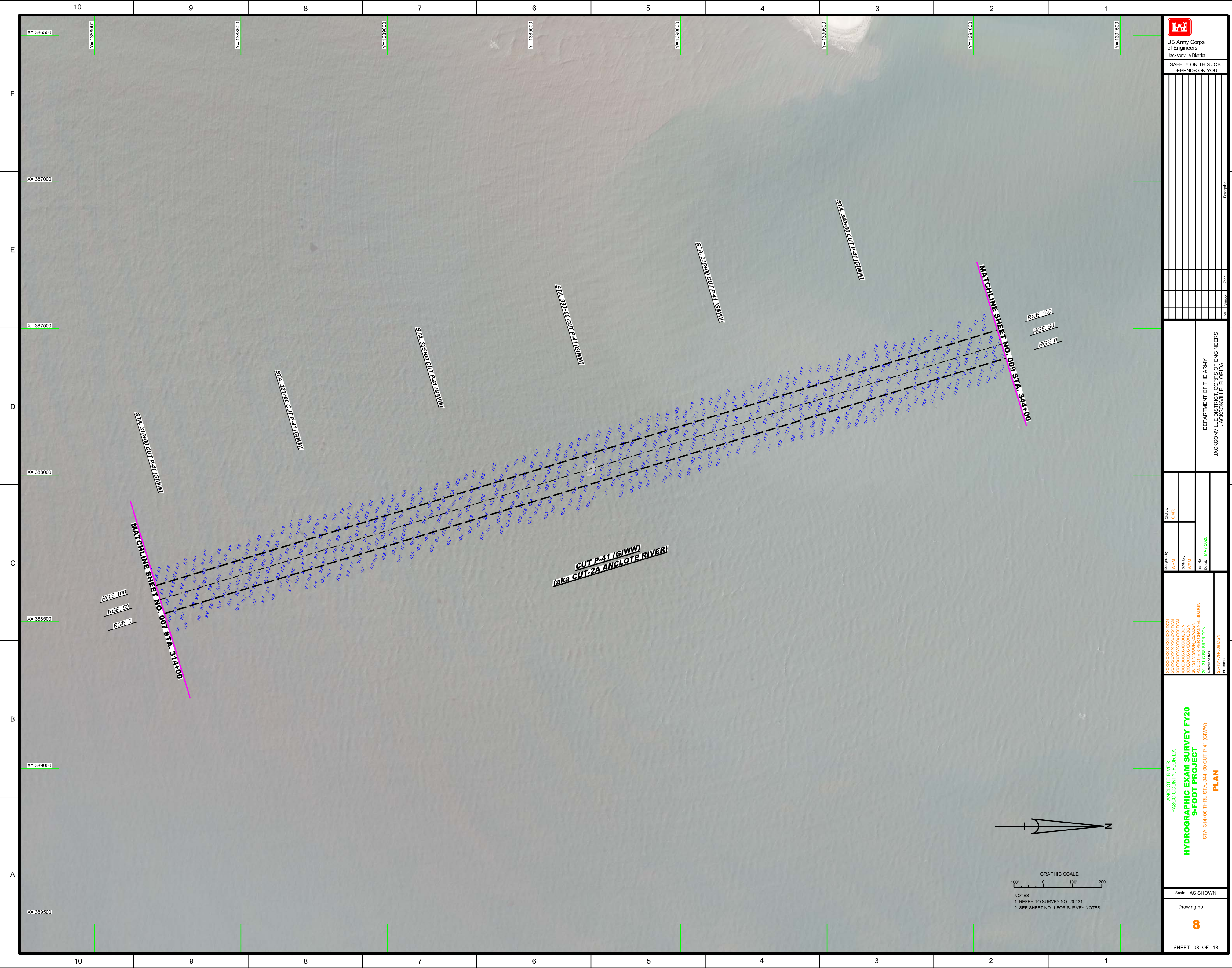
XXXXXXXXXXXXXXXXXXXX.DGN
 XXXXXXXXXXXXXXXXXXXX.DGN
 XXXXXXXXXXXXXXXXXXXX.DGN
 XXXXXXXXXXXXXXXXXXXX.DGN
 XXXXXXXXXXXXXXXXXXXX.DGN
 ANGLOTE RIVER CHANNEL 10.DGN
 20-131-H-RIVER.DGN
 20-131-H-R07.DGN

ANGLOTE RIVER
 PASCO COUNTY, FLORIDA
 HYDROGRAPHIC EXAM SURVEY FY20
 9-FOOT PROJECT
 STA. 282+00 THRU STA. 314+00 CUT P-41 (GIWW)
PLAN

Scale: AS SHOWN

Drawing no.
7

SHEET 07 OF 18



US Army Corps of Engineers
Jacksonville District

SAFETY ON THIS JOB
DEPENDS ON YOU

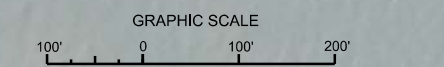
No.	Symbol	Zone

DEPARTMENT OF THE ARMY
JACKSONVILLE DISTRICT, CORPS OF ENGINEERS
JACKSONVILLE, FLORIDA

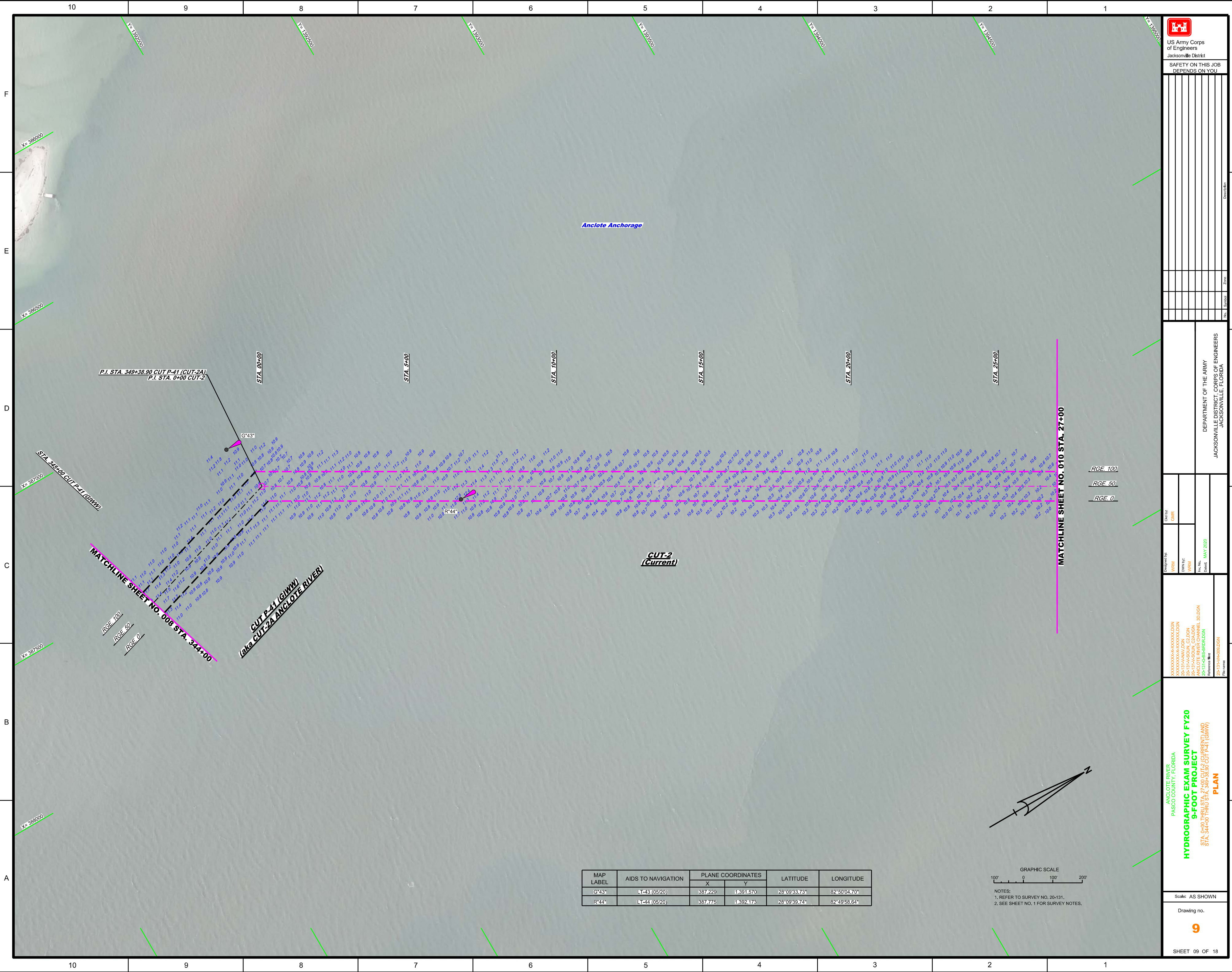
Checked By: GR
Designed by: WRM
Drawn by: WRM
File Name: 20-1316-RS-BR00.DGN
Date: MAY 2020

ANGLOTE RIVER
PASCO COUNTY, FLORIDA
HYDROGRAPHIC EXAM SURVEY FY20
9-FOOT PROJECT
PLAN
STA. 314+00 THRU STA. 344+00 CUT P-41 (GIWW)

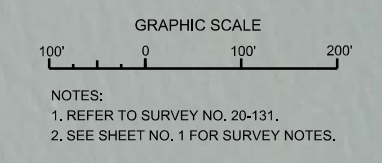
Scale: AS SHOWN
Drawing no. **8**
SHEET 08 OF 18




NOTES:
1. REFER TO SURVEY NO. 20-131.
2. SEE SHEET NO. 1 FOR SURVEY NOTES.



MAP LABEL	AIDS TO NAVIGATION	PLANE COORDINATES		LATITUDE	LONGITUDE
		X	Y		
G43*	LT-43 (05/20)	387.229	1,391.570	28°09'33.73"	82°50'04.70"
R44*	LT-44 (05/20)	387.775	1,392.173	28°09'39.74"	82°49'58.64"





US Army Corps of Engineers
Jacksonville District

SAFETY ON THIS JOB
DEPENDS ON YOU

<p style="text-align: center;">DEPARTMENT OF THE ARMY JACKSONVILLE DISTRICT, CORPS OF ENGINEERS JACKSONVILLE, FLORIDA</p>	<p>Drawn by: WRM Checked by: GHR</p> <p>Designed by: WRM Checked by: GHR</p> <p>XXXXXXXXXXXXXXXXXXXX 20-131-A-001-001-001 20-131-A-001-002-001 20-131-A-001-003-001 20-131-A-001-004-001 20-131-A-001-005-001 20-131-A-001-006-001 20-131-A-001-007-001 20-131-A-001-008-001 20-131-A-001-009-001 20-131-A-001-010-001 20-131-A-001-011-001 20-131-A-001-012-001 20-131-A-001-013-001 20-131-A-001-014-001 20-131-A-001-015-001 20-131-A-001-016-001 20-131-A-001-017-001 20-131-A-001-018-001 20-131-A-001-019-001 20-131-A-001-020-001 20-131-A-001-021-001 20-131-A-001-022-001 20-131-A-001-023-001 20-131-A-001-024-001 20-131-A-001-025-001 20-131-A-001-026-001 20-131-A-001-027-001 20-131-A-001-028-001 20-131-A-001-029-001 20-131-A-001-030-001 20-131-A-001-031-001 20-131-A-001-032-001 20-131-A-001-033-001 20-131-A-001-034-001 20-131-A-001-035-001 20-131-A-001-036-001 20-131-A-001-037-001 20-131-A-001-038-001 20-131-A-001-039-001 20-131-A-001-040-001 20-131-A-001-041-001 20-131-A-001-042-001 20-131-A-001-043-001 20-131-A-001-044-001 20-131-A-001-045-001 20-131-A-001-046-001 20-131-A-001-047-001 20-131-A-001-048-001 20-131-A-001-049-001 20-131-A-001-050-001 20-131-A-001-051-001 20-131-A-001-052-001 20-131-A-001-053-001 20-131-A-001-054-001 20-131-A-001-055-001 20-131-A-001-056-001 20-131-A-001-057-001 20-131-A-001-058-001 20-131-A-001-059-001 20-131-A-001-060-001 20-131-A-001-061-001 20-131-A-001-062-001 20-131-A-001-063-001 20-131-A-001-064-001 20-131-A-001-065-001 20-131-A-001-066-001 20-131-A-001-067-001 20-131-A-001-068-001 20-131-A-001-069-001 20-131-A-001-070-001 20-131-A-001-071-001 20-131-A-001-072-001 20-131-A-001-073-001 20-131-A-001-074-001 20-131-A-001-075-001 20-131-A-001-076-001 20-131-A-001-077-001 20-131-A-001-078-001 20-131-A-001-079-001 20-131-A-001-080-001 20-131-A-001-081-001 20-131-A-001-082-001 20-131-A-001-083-001 20-131-A-001-084-001 20-131-A-001-085-001 20-131-A-001-086-001 20-131-A-001-087-001 20-131-A-001-088-001 20-131-A-001-089-001 20-131-A-001-090-001 20-131-A-001-091-001 20-131-A-001-092-001 20-131-A-001-093-001 20-131-A-001-094-001 20-131-A-001-095-001 20-131-A-001-096-001 20-131-A-001-097-001 20-131-A-001-098-001 20-131-A-001-099-001 20-131-A-001-100-001</p>
---	--

ANGLOTE RIVER
PASCO COUNTY, FLORIDA

HYDROGRAPHIC EXAM SURVEY FY20
9-FOOT PROJECT

STA. 349+00 THROUGH STA. 349+36.90 (CURRENT AND
STA. 344+00 THROUGH STA. 349+36.90 CUT P41 (GIWW))

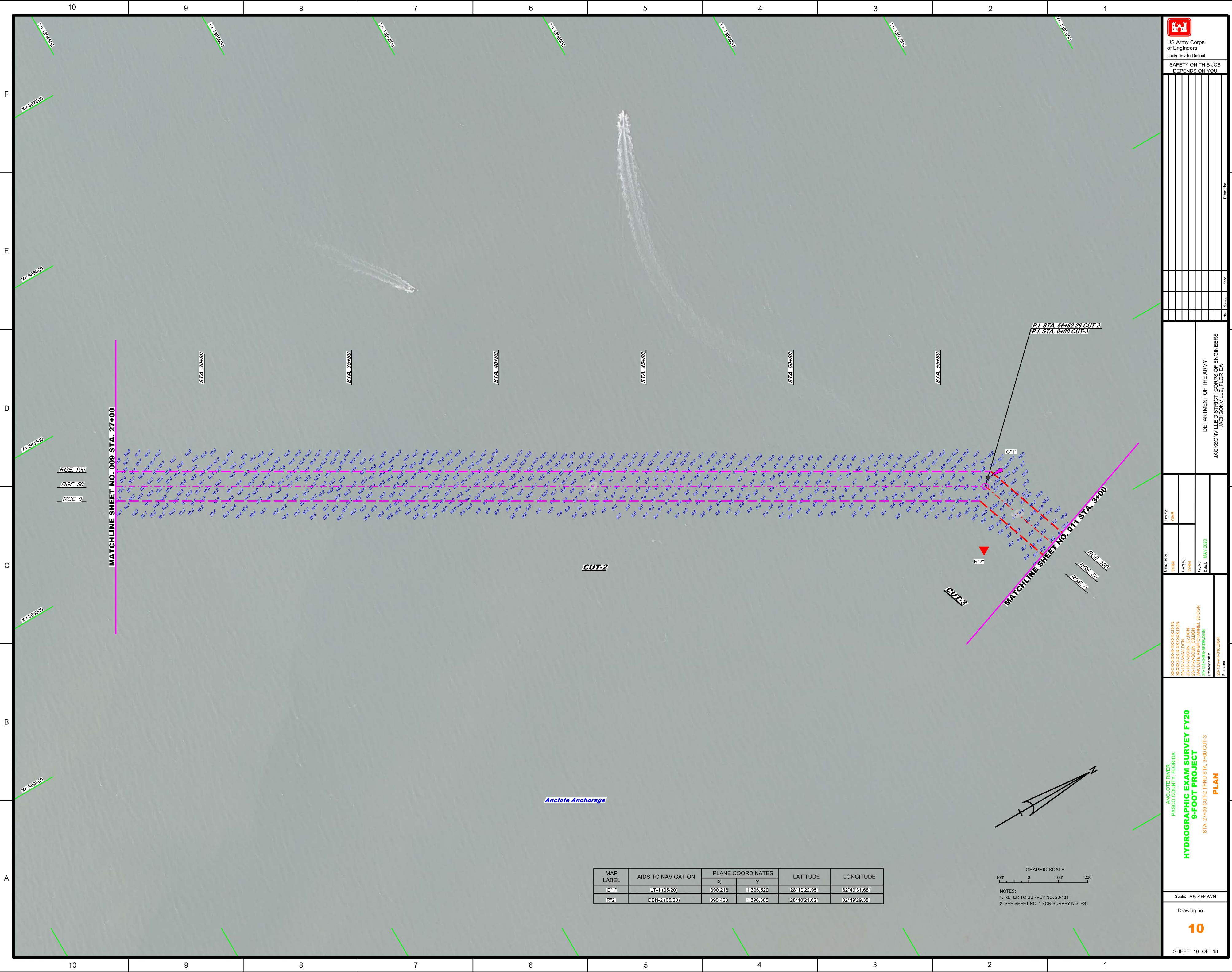
PLAN

Scale: AS SHOWN

Drawing no.

9

SHEET 09 OF 18



US Army Corps of Engineers Jacksonville District	
SAFETY ON THIS JOB DEPENDS ON YOU	
No.	Symbol

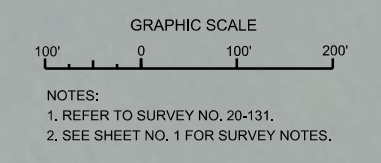
DEPARTMENT OF THE ARMY
JACKSONVILLE DISTRICT, CORPS OF ENGINEERS
JACKSONVILLE, FLORIDA

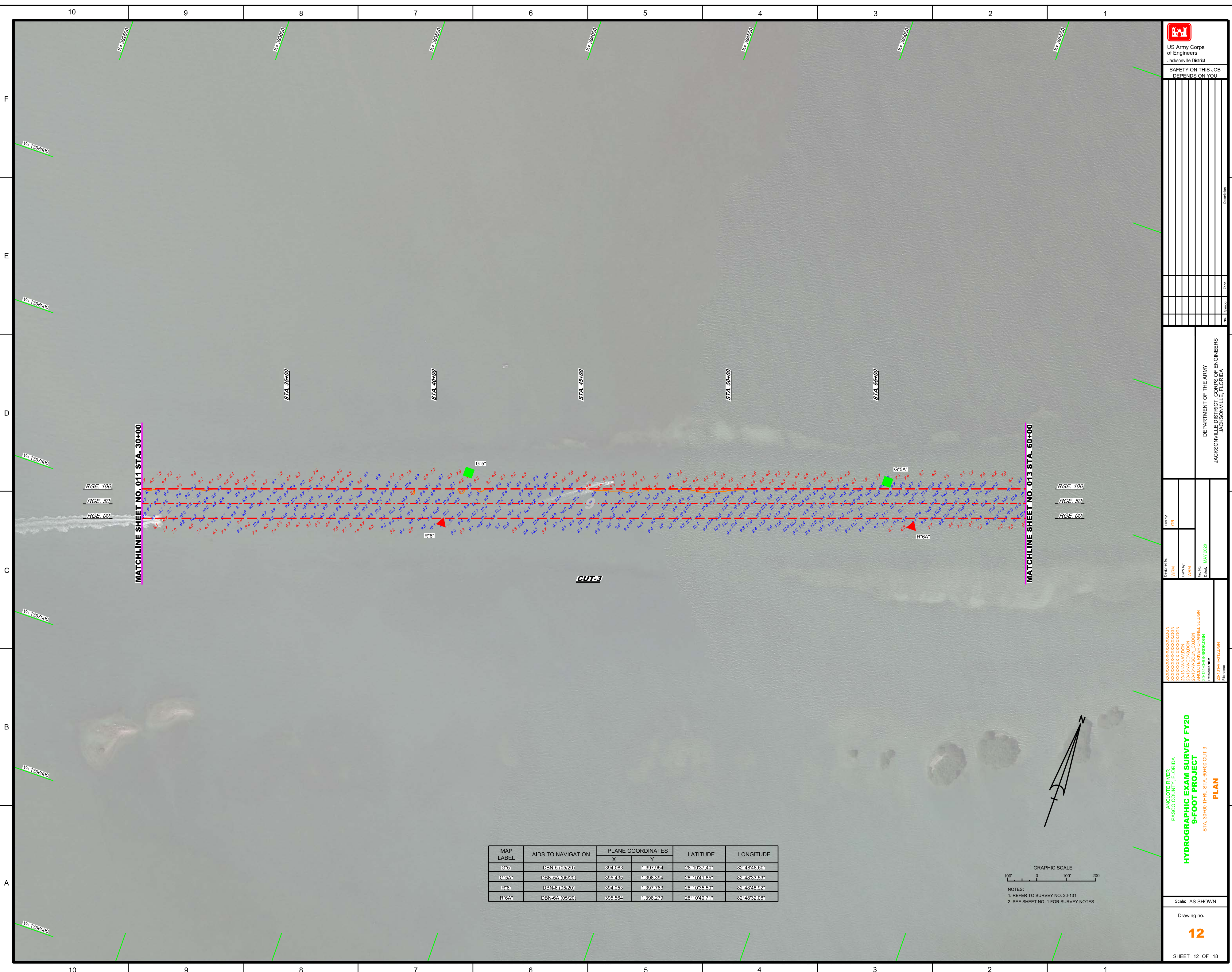
Designed by:
WRM
Checked by:
WRM
Checked by:
WRM
Date:
MAY 2020

XXXXXXXXXXXXXXXXXXXX
201311A\AV\DON
201311A\AV\AV\DON
AV\AV\AV\AV\AV\AV\AV\AV
AV\AV\AV\AV\AV\AV\AV\AV
Reference files:
201311A\H01\LDON

**ANGLOTE RIVER
PASCO COUNTY, FLORIDA
9-FOOT PROJECT
STA 27+00 CUT-2 THRU STA 3+00 CUT-3
PLAN**

MAP LABEL	AIDS TO NAVIGATION	PLANE COORDINATES		LATITUDE	LONGITUDE
		X	Y		
G*1	11 (05/20)	890218	1,398,520	28°10'22.95"	82°49'31.68"
R*2	DBN-2 (05/20)	890243	1,398,385	28°10'24.62"	82°49'29.38"





US Army Corps of Engineers Jacksonville District SAFETY ON THIS JOB DEPENDS ON YOU					
Project No.					
Sheet No.					
Date					
Scale					
Author					

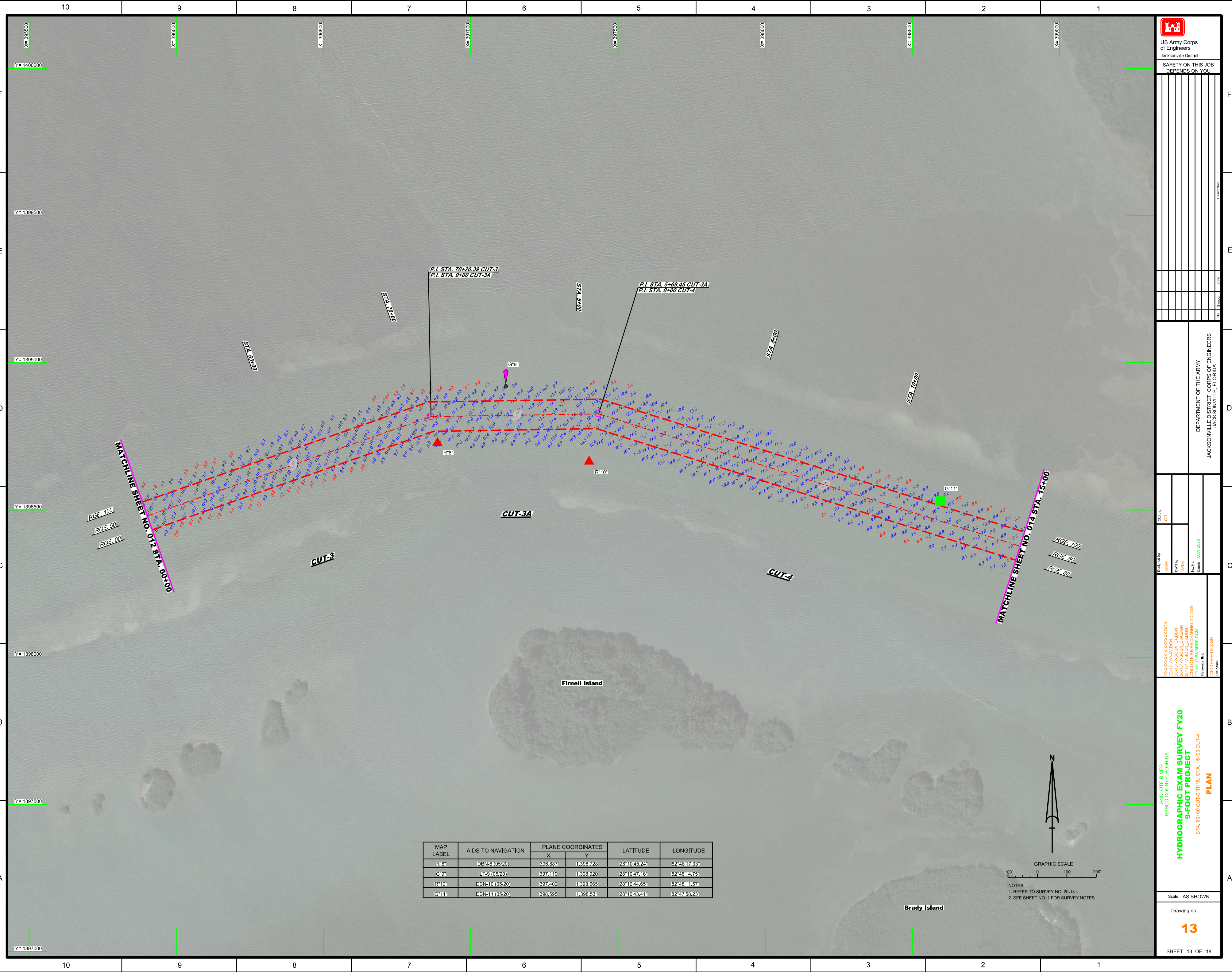
DEPARTMENT OF THE ARMY
JACKSONVILLE DISTRICT CORPS OF ENGINEERS
JACKSONVILLE, FLORIDA

Checked By:	GRL
Designed By:	WRM
Drawn By:	WRM
File No.:	20-13-14-CON
Contract:	MAY 2020
XXXXXXXXXXXXXXXXXXXXXXXXXXXXX	
XXXXXXXXXXXXXXXXXXXXXXXXXXXXX	
XXXXXXXXXXXXXXXXXXXXXXXXXXXXX	
XXXXXXXXXXXXXXXXXXXXXXXXXXXXX	
XXXXXXXXXXXXXXXXXXXXXXXXXXXXX	
XXXXXXXXXXXXXXXXXXXXXXXXXXXXX	

ANGLOTE RIVER
PASCO COUNTY, FLORIDA
HYDROGRAPHIC EXAM SURVEY FY20
9-FOOT PROJECT
STA. 39+00 THRU STA. 60+00 CUT-3
PLAN

MAP LABEL	AIDS TO NAVIGATION	PLANE COORDINATES		LATITUDE	LONGITUDE
		X	Y		
G*5*	DBN-5 (05/20)	394.083	1,397,954	28°10'37.40"	82°48'48.60"
G*5A*	DBN-5A (05/20)	395.435	1,398,394	28°10'41.85"	82°48'33.53"
R*6*	DBN-6 (05/20)	394.053	1,397,763	28°10'35.50"	82°48'48.92"
R*6A*	DBN-6A (05/20)	395.564	1,398,279	28°10'40.71"	82°48'32.08"

GRAPHIC SCALE
100' 0 100' 200'
NOTES:
1. REFER TO SURVEY NO. 20-13-1.
2. SEE SHEET NO. 1 FOR SURVEY NOTES.



10 9 8 7 6 5 4 3 2 1

Y=1400000

Y=1399500

Y=1399000

Y=1398500

Y=1398000

Y=1397500

Y=1397000

P.I. STA. 70+20.39 CUT-3
 P.I. STA. 0+00 CUT-3A

P.I. STA. 5+69.45 CUT-3A
 P.I. STA. 0+00 CUT-4

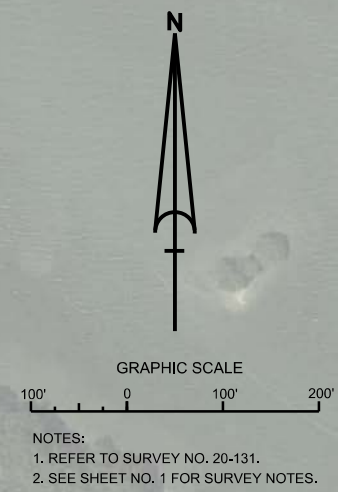
MATCHLINE SHEET NO. 012 STA. 60+00
 RGE. 100
 RGE. 50
 RGE. 00

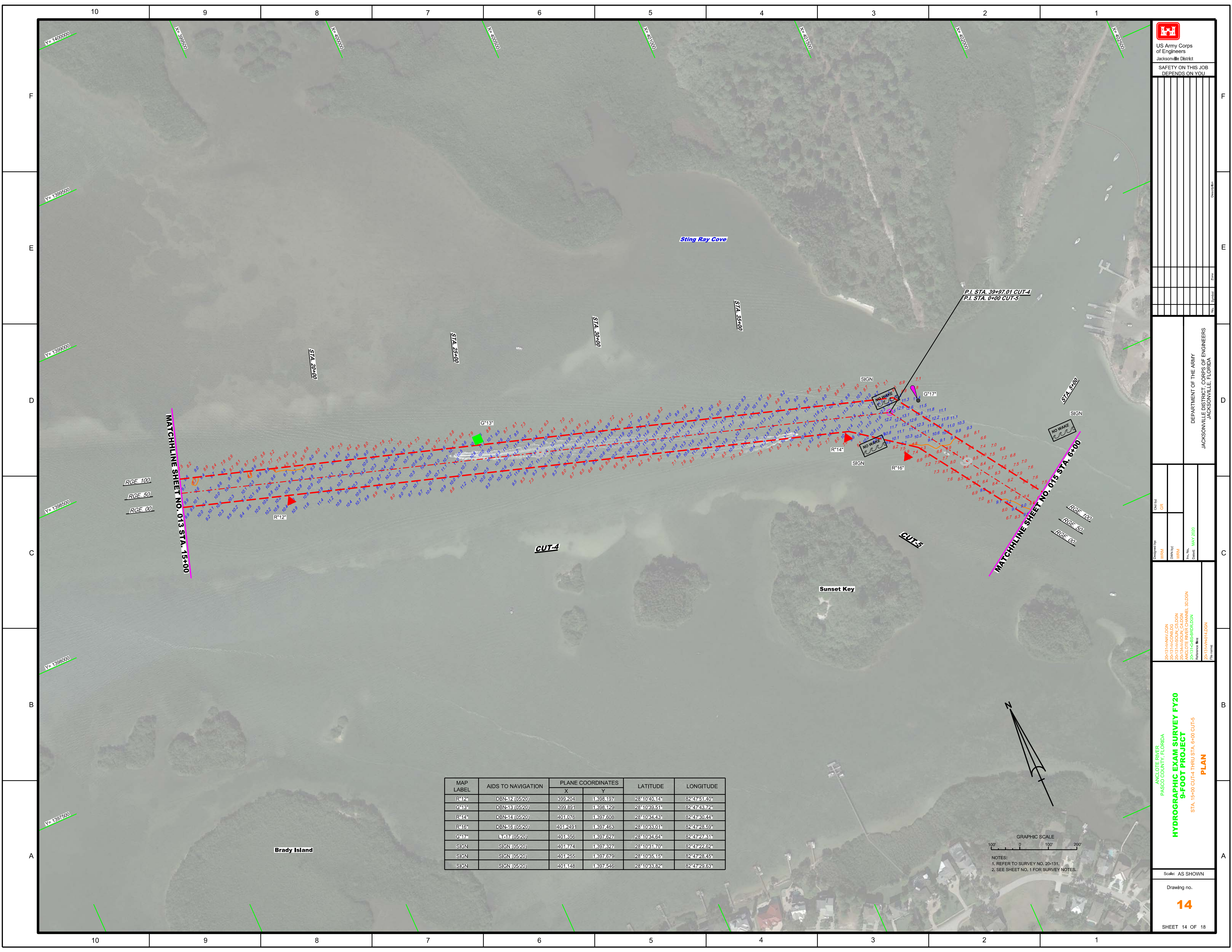
MATCHLINE SHEET NO. 014 STA. 15+00
 RGE. 100
 RGE. 50
 RGE. 00

Firrell Island

Brady Island

MAP LABEL	AIDS TO NAVIGATION	PLANE COORDINATES		LATITUDE	LONGITUDE
		X	Y		
R*8"	DBN-8 (05/20)	396.887	1,398.728	28°10'45.24"	82°48'17.83"
G*9"	LD-9 (05/20)	397.419	1,398.920	28°10'47.16"	82°48'14.75"
R*10"	DBN-10 (05/20)	397.402	1,398.665	28°10'44.65"	82°48'11.57"
G*11"	DBN-11 (05/20)	398.595	1,398.531	28°10'43.41"	82°47'58.23"





Date	Symbol	Zone	Drawn By

DEPARTMENT OF THE ARMY
JACKSONVILLE DISTRICT, CORPS OF ENGINEERS
JACKSONVILLE, FLORIDA

Checked By	Designated By
GRL	WRM
	WRM
	WRM
	WRM

2013-11-20-13-11-AV-01-DGN
2013-11-20-13-11-AC-00-DGN
2013-11-20-13-11-AS-01-DGN
2013-11-20-13-11-BS-01-DGN
2013-11-20-13-11-RR-01-DGN

**HYDROGRAPHIC EXAM SURVEY FY20
9-FOOT PROJECT**

ANGLIOTE RIVER
PASCO COUNTY, FLORIDA

STA. 15+00 CUT-4 THRU STA. 6+00 CUT-5

PLAN

Scale: AS SHOWN
Drawing no.
14
SHEET 14 OF 18

MAP LABEL	AIDS TO NAVIGATION	PLANE COORDINATES		LATITUDE	LONGITUDE
		X	Y		
R*12	DBN-12 (05/20)	399,204	1,398,197	28°10'40.14"	82°47'51.40"
G*13	DBN-13 (05/20)	399,891	1,398,129	28°10'39.51"	82°47'43.72"
R*14	DBN-14 (05/20)	401,076	1,397,608	28°10'34.43"	82°47'30.44"
R*16	DBN-16 (05/20)	401,249	1,397,463	28°10'33.01"	82°47'28.59"
G*17	LT-17 (05/20)	401,356	1,397,627	28°10'34.64"	82°47'27.31"
SIGN	SIGN (05/20)	401,774	1,397,327	28°10'31.70"	82°47'22.62"
SIGN	SIGN (05/20)	401,255	1,397,679	28°10'35.15"	82°47'28.45"
SIGN	SIGN (05/20)	401,148	1,397,546	28°10'33.82"	82°47'29.63"



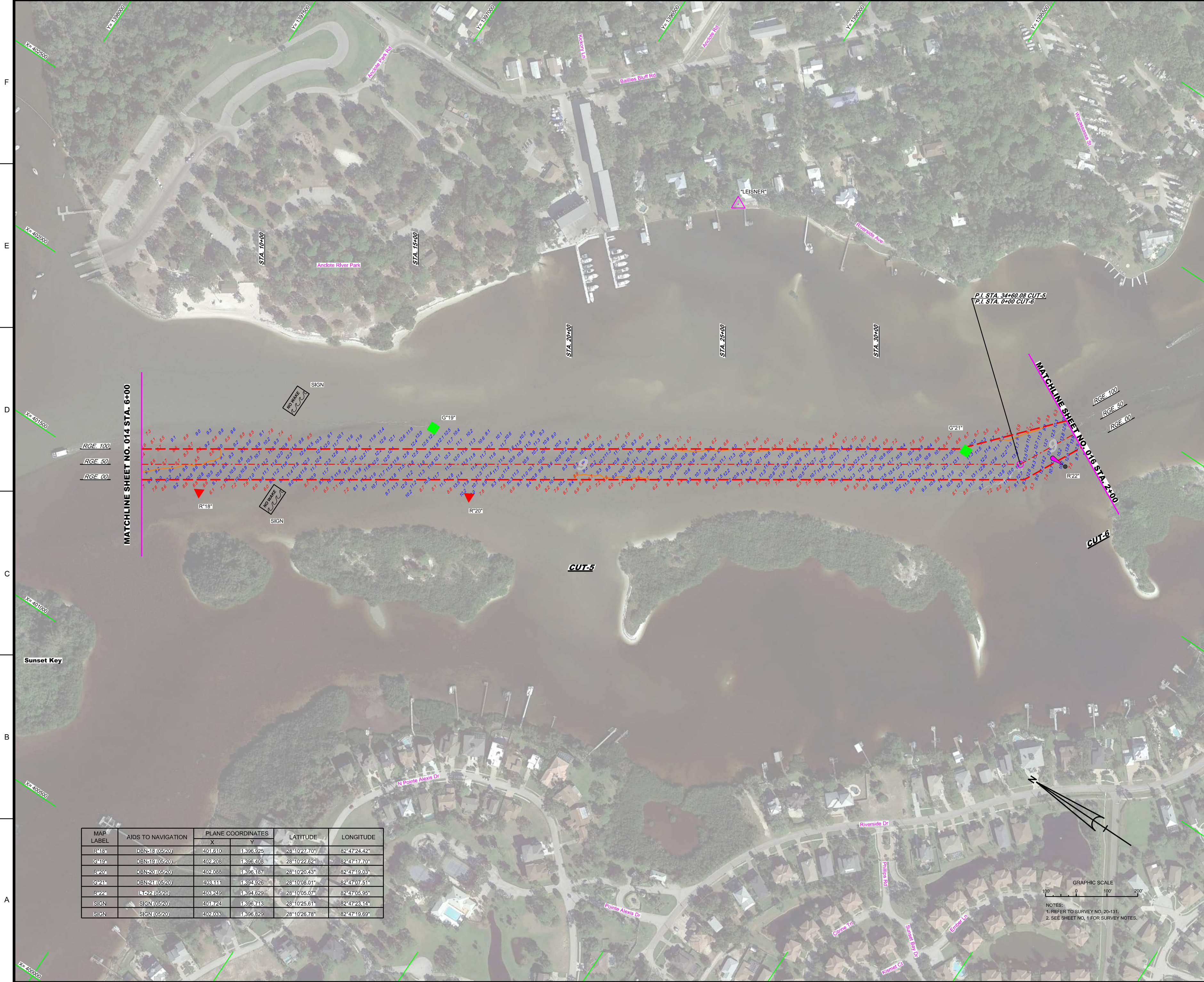
NOTES:
1. REFER TO SURVEY NO. 20-131.
2. SEE SHEET NO. 1 FOR SURVEY NOTES.

SAFETY ON THIS JOB DEPENDS ON YOU

DEPARTMENT OF THE ARMY
JACKSONVILLE DISTRICT, CORPS OF ENGINEERS
JACKSONVILLE, FLORIDA

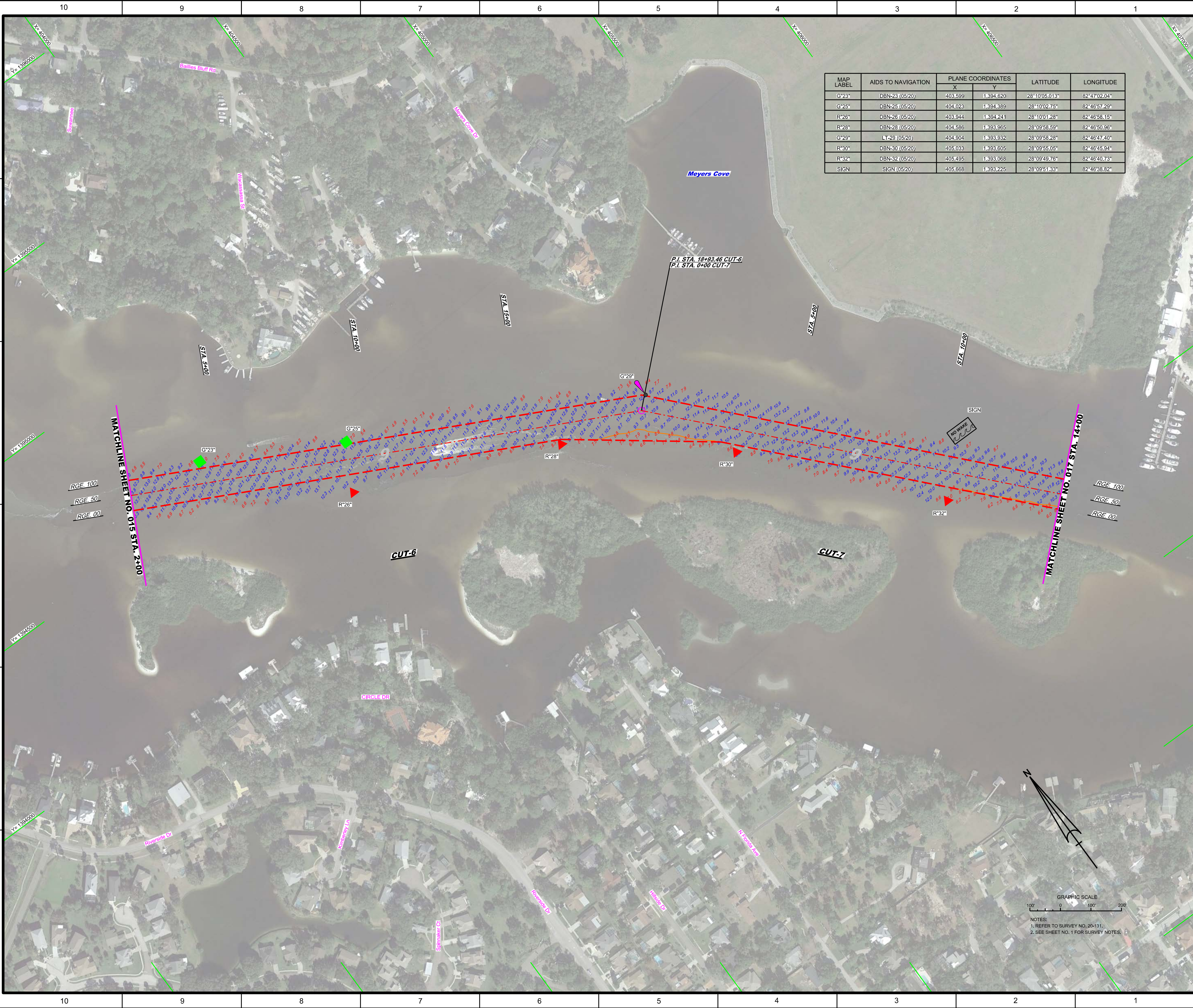
ANGLOTE RIVER
PASCO COUNTY, FLORIDA
HYDROGRAPHIC EXAM SURVEY FY20
9-FOOT PROJECT
STA. 6+00 CUT-5 THRU STA. 2+00 CUT-6
PLAN

Scale: AS SHOWN
Drawing no. **15**
SHEET 15 OF 18



MAP LABEL	AIDS TO NAVIGATION	PLANE COORDINATES	LATITUDE	LONGITUDE	
		X	Y		
R*18	DBN-18 (05/20)	401.610	1,396.925	28°10'27.70"	82°47'24.42"
G*19	DBN-19 (05/20)	402.208	1,396.408	28°10'22.62"	82°47'17.03"
R*20	DBN-20 (05/20)	402.088	1,396.387	28°10'20.43"	82°47'19.03"
G*21	DBN-21 (05/20)	403.111	1,394.825	28°10'08.01"	82°47'07.51"
R*22	LT-22 (05/20)	403.249	1,394.629	28°10'05.07"	82°47'05.95"
SIGN	SIGN (05/20)	401.724	1,396.743	28°10'25.61"	82°47'23.14"
SIGN	SIGN (05/20)	402.033	1,396.829	28°10'26.78"	82°47'19.69"

NOTES:
1. REFER TO SURVEY NO. 20-131.
2. SEE SHEET NO. 1 FOR SURVEY NOTES.



MAP LABEL	AIDS TO NAVIGATION	PLANE COORDINATES		LATITUDE	LONGITUDE
		X	Y		
G*23*	DBN-23 (05/20)	403,599	1,394,620	28°10'05.013"	82°47'02.04"
G*25*	DBN-25 (05/20)	404,023	1,394,389	28°10'02.75"	82°46'57.29"
R*26*	DBN-26 (05/20)	403,944	1,394,241	28°10'01.28"	82°46'58.15"
R*28*	DBN-28 (05/20)	404,586	1,393,965	28°09'58.59"	82°46'50.96"
G*29*	LT-29 (05/20)	404,804	1,393,832	28°09'58.28"	82°46'47.40"
R*30*	DBN-30 (05/20)	405,033	1,393,605	28°09'55.05"	82°46'45.94"
R*32*	DBN-32 (05/20)	405,495	1,393,068	28°09'49.76"	82°46'40.73"
SIGN	SIGN (05/20)	405,668	1,393,225	28°09'51.33"	82°46'38.82"

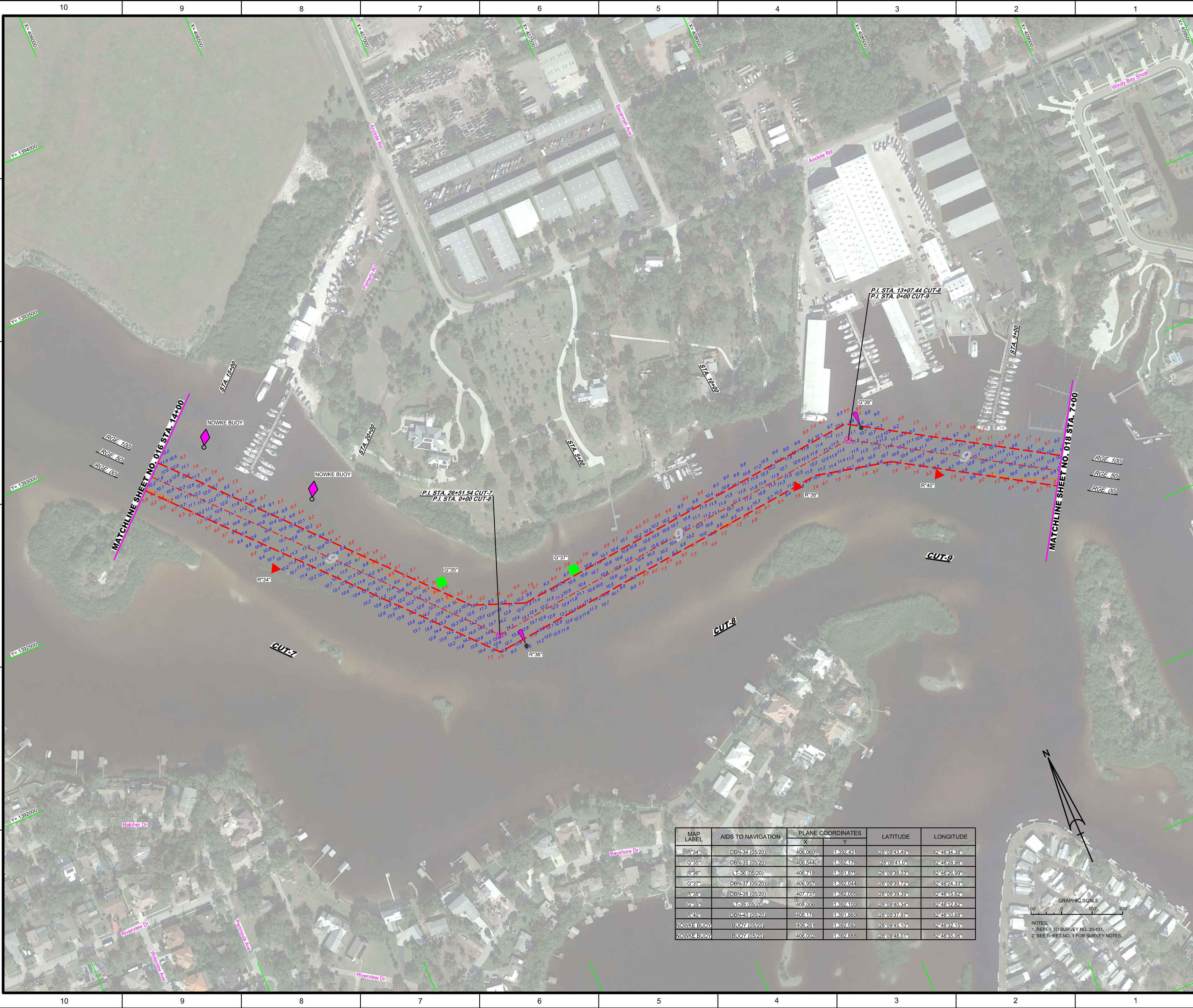
US Army Corps of Engineers
Jacksonville District

SAFETY ON THIS JOB
DEPENDS ON YOU

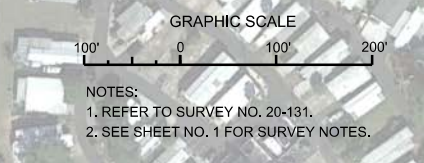
DEPARTMENT OF THE ARMY
JACKSONVILLE DISTRICT, CORPS OF ENGINEERS
JACKSONVILLE, FLORIDA

ANGLOTE RIVER
PASCO COUNTY, FLORIDA
HYDROGRAPHIC EXAM SURVEY FY20
9-FOOT PROJECT
STA. 2+00 CUT-6 THRU STA. 14+00 CUT-7
PLAN

Scale: AS SHOWN
Drawing no.
16
SHEET 16 OF 18



MAP LABEL	AIDS TO NAVIGATION	PLANE COORDINATES		LATITUDE	LONGITUDE
		X	Y		
R-34	DBN-34 (05/20)	406.060	11392431	28°09'43.49"	82°46'34.38"
G-35	DBN-35 (05/20)	406.544	11392176	28°09'41.0"	82°46'26.96"
R-36	LT-36 (05/20)	406.718	11391875	28°09'38.03"	82°46'26.99"
G-37	DBN-37 (05/20)	406.957	11392044	28°09'39.72"	82°46'24.33"
R-38	DBN-38 (05/20)	407.737	11392005	28°09'39.39"	82°46'15.82"
G-39	LT-39 (05/20)	408.006	11392100	28°09'40.34"	82°46'12.62"
R-40	DBN-40 (05/20)	408.178	11391850	28°09'37.97"	82°46'10.68"
NOWKE BUOY	BUOY (05/20)	408.261	11392592	28°09'45.10"	82°46'32.15"
NOWKE BUOY	BUOY (05/20)	408.002	11392888	28°09'48.01"	82°46'35.05"



NOTES:
1. REFER TO SURVEY NO. 20131.
2. SEE SHEET NO. 1 FOR SURVEY NOTES.

US Army Corps of Engineers
Jacksonville District

SAFETY ON THIS JOB DEPENDS ON YOU

DEPARTMENT OF THE ARMY
JACKSONVILLE DISTRICT, CORPS OF ENGINEERS
JACKSONVILLE, FLORIDA

XXXXXXXXXXXXXXXXXXXX
20131A-AV-0001
20131A-AV-0002
20131A-AV-0003
20131A-AV-0004
20131A-AV-0005
20131A-AV-0006
20131A-AV-0007
20131A-AV-0008
20131A-AV-0009
20131A-AV-0010
20131A-AV-0011
20131A-AV-0012
20131A-AV-0013
20131A-AV-0014
20131A-AV-0015
20131A-AV-0016
20131A-AV-0017
20131A-AV-0018
20131A-AV-0019
20131A-AV-0020

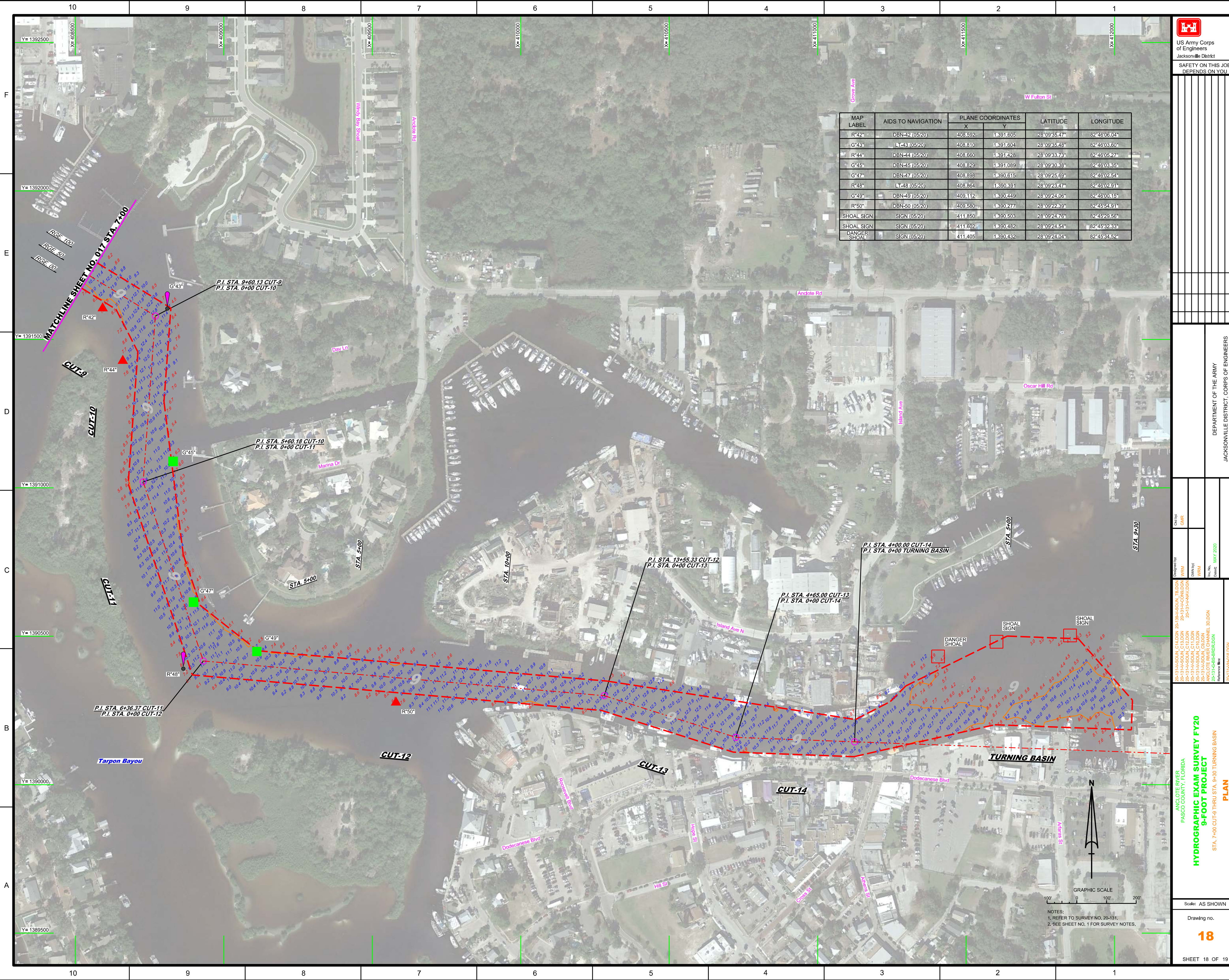
**ANGLOTE RIVER
PASCO COUNTY, FLORIDA
9-FOOT PROJECT
HYDROGRAPHIC EXAM SURVEY FY20**

STA. 14+00 CUT-7 THRU STA. 7+00 CUT-9
PLAN


Scale: AS SHOWN

Drawing no.
17

SHEET 17 OF 18



MAP LABEL	AIDS TO NAVIGATION	PLANE COORDINATES		LATITUDE	LONGITUDE
		X	Y		
R42	DBN-42 (05/20)	408.592	1.391.605	28°09'35.47"	82°46'06.04"
G43	LT-43 (05/20)	408.810	1.391.604	28°09'35.45"	82°46'06.50"
R44	DBN-44 (05/20)	408.660	1.391.426	28°09'33.75"	82°46'05.27"
G45	DBN-45 (05/20)	408.829	1.391.089	28°09'30.36"	82°46'08.35"
G47	DBN-47 (05/20)	408.898	1.390.615	28°09'25.69"	82°46'02.54"
R48	LT-48 (05/20)	408.864	1.390.391	28°09'23.47"	82°46'02.91"
G49	DBN-49 (05/20)	409.112	1.390.449	28°09'24.06"	82°46'00.15"
R50	DBN-50 (05/20)	409.580	1.390.277	28°09'22.39"	82°45'54.91"
SHOAL SIGN	SIGN (05/20)	411.850	1.390.503	28°09'24.76"	82°45'29.56"
SHOAL SIGN	SIGN (05/20)	411.802	1.390.482	28°09'24.54"	82°45'32.33"
SHOAL SHOAL	SIGN (05/20)	411.405	1.390.432	28°09'24.04"	82°45'34.52"



US Army Corps of Engineers
Jacksonville District
SAFETY ON THIS JOB
DEPENDS ON YOU

DEPARTMENT OF THE ARMY
JACKSONVILLE DISTRICT, CORPS OF ENGINEERS
JACKSONVILLE, FLORIDA

Checked by: GHR

Designed by: WRM

DWY/P: WRM

File No: MAY 2020

Reference File: 20-1314-0001

20-1314-0001 C4.DGN 20-1314-0001 TB.DGN

20-1314-0001 C10.DGN 20-1314-0001 D00.DGN

20-1314-0001 C10.DGN 20-1314-0001 D00.DGN

20-1314-0001 C10.DGN 20-1314-0001 D00.DGN

20-1314-0001 C10.DGN 20-1314-0001 D00.DGN

20-1314-0001 C10.DGN 20-1314-0001 D00.DGN

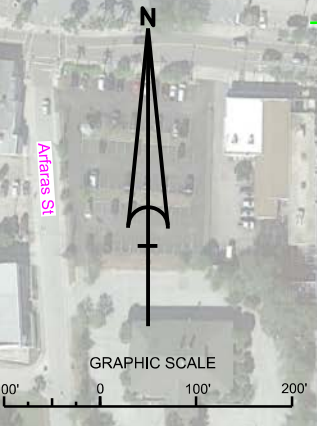
HYDROGRAPHIC EXAM SURVEY FY20
9-FOOT PROJECT
PLAN

STA. 7+00 CUT-9 THRU STA. 9+30 TURNING BASIN

Scale: AS SHOWN

Drawing No. **18**

SHEET 18 OF 19



NOTES:
1. REFER TO SURVEY NO. 20-131.
2. SEE SHEET NO. 1 FOR SURVEY NOTES.