

GULF INTRACOASTAL WATERWAY CALOOSAHATCHEE RIVER TO ANCLOTE RIVER LEE COUNTY, FLORIDA EXAMINATION SURVEY FY20 9-FOOT PROJECT

SURVEY NOTES

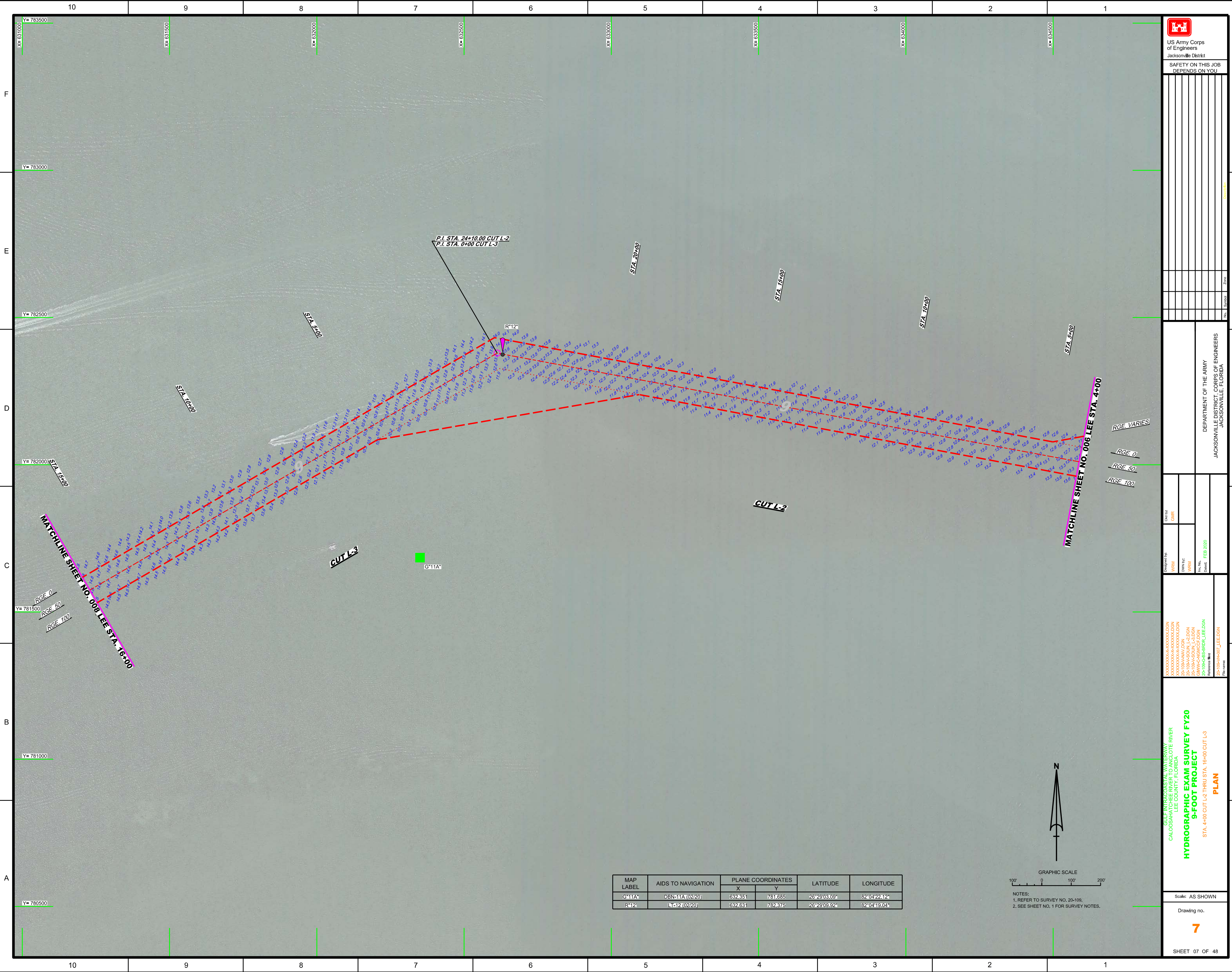
- REFER TO SURVEY NO. 20-109.
- SOUNDINGS ARE IN FEET AND TENTHS AND REFER TO NOAA'S REPORTED MEAN LOWER LOW WATER (MLLW) OF THE 1983-2001 TIDAL EPOCH.
- TIDAL REDUCTIONS WERE OBTAINED UTILIZING A REAL-TIME KINEMATIC (RTK) GPS AND REFERENCED TO MLLW UTILIZING A HYPACK KINEMATIC TIDE DATUM (KTD) MODEL. KTD FILE NAME IS: "SPC-FL-WEST-2010-12-07.KTD".
- ALL ELEVATIONS ARE BELOW THE CHART DATUM UNLESS PRECEDED BY A (+) SIGN.
- PLANE COORDINATES ARE BASED ON THE TRANSVERSE MERCATOR PROJECTION FOR THE WEST ZONE OF FLORIDA AND REFERENCED TO NORTH AMERICAN DATUM OF 1983 (NAD83).
- ALL STATIONING REFERS TO THE CENTERLINE OF THE CHANNEL.
- THIS SURVEY WAS PERFORMED USING REAL-TIME KINEMATIC (RTK) GPS POSITIONING WITH THE FOLLOWING REFERENCE BASE LOCATIONS:
REFERENCE BASE LOCATED AT "GIWW L 1" (PID: BBFB07)
REFERENCE BASE LOCATED AT "GIWW L 2" (PID: BBFB18)
REFERENCE BASE LOCATED AT "PC102" (PID: BBCE70)
- DEPTHS DEPICTED BY THIS SURVEY ARE REFERENCED TO MLLW, TIDAL EPOCH 1983-2001 AS REPORTED BY THE NATIONAL OCEANIC AND ATMOSPHERIC ADMINISTRATION (NOAA). NOAA'S VDATUM MODEL WAS USED AND CALIBRATED TO THE PUBLISHED MLLW HEIGHTS OF THE BENCHMARKS ASSOCIATED WITH THE TIDE GAUGE SITES SPECIFIED BELOW:
NOAA TIDAL STATION 872 5393 A USED FOR CUTS L-1 THRU L-6. (PID: DL8706)
NOAA TIDAL STATION 872 5441 A USED FOR CUTS L-7 THRU L-11. (PID: DL8716)
NOAA TIDAL STATION 872 5577 E USED FOR CUTS L-12 THRU L-22. (PID: DL7346)
VERTICAL MEASUREMENTS WERE MADE USING AN EDGETECH 6205 COMBINED MULTI-BEAM AND SIDESCAN. ALL SOUNDINGS SHOWN ARE IN HIGH FREQUENCY.
- AIDS TO NAVIGATION WERE LOCATED DURING THIS SURVEY.
- THE INFORMATION DEPICTED ON THIS MAP REPRESENTS THE RESULTS OF SURVEYS MADE ON THE DATES INDICATED ABOVE AND CAN ONLY BE CONSIDERED AS INDICATING THE GENERAL CONDITIONS AT THAT TIME. THIS CHART IS SOLELY FOR THE DISTRIBUTION OF AVAILABLE DEPTHS AT THE TIME OF THE SURVEY.
- SURVEY ACCURACY PERFORMANCE STANDARDS, QUALITY CONTROL, AND QUALITY ASSURANCE REQUIREMENTS WERE FOLLOWED DURING THIS SURVEY IN ACCORDANCE WITH USACE EM 1110-2-1003, HYDROGRAPHIC SURVEYING, 30 NOV 2013.


LEGEND	
	MONUMENT
	LIGHTED BEACON
	GREEN DAYBEACON
	RED DAYBEACON
	RED LIGHTED BUOY
	GREEN LIGHTED BUOY
	CAN BUOY
	NUN BUOY
	TIDE STAFF
	PROJECT DEPTH

US Army Corps of Engineers
Jacksonville District
SAFETY ON THIS JOB
DEPENDS ON YOU

<p>DEPARTMENT OF THE ARMY JACKSONVILLE DISTRICT, CORPS OF ENGINEERS JACKSONVILLE, FLORIDA</p>	<p>DATE: FEB 2020</p>	<p>SCALE: AS SHOWN</p>	<p>DRAWING NO.</p>	<p>SHEET 01 OF 48</p>
<p>GULF INTRACOASTAL WATERWAY CALOOSAHATCHEE RIVER HYDROGRAPHIC EXAM SURVEY FY20 9-FOOT PROJECT INDEX, LOCATION AND VICINITY MAP</p>				







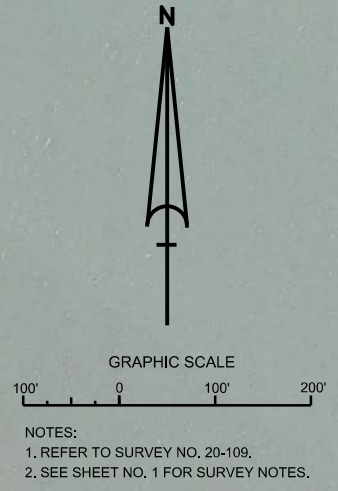
 US Army Corps of Engineers
 Jacksonville District
 SAFETY ON THIS JOB
 DEPENDS ON YOU

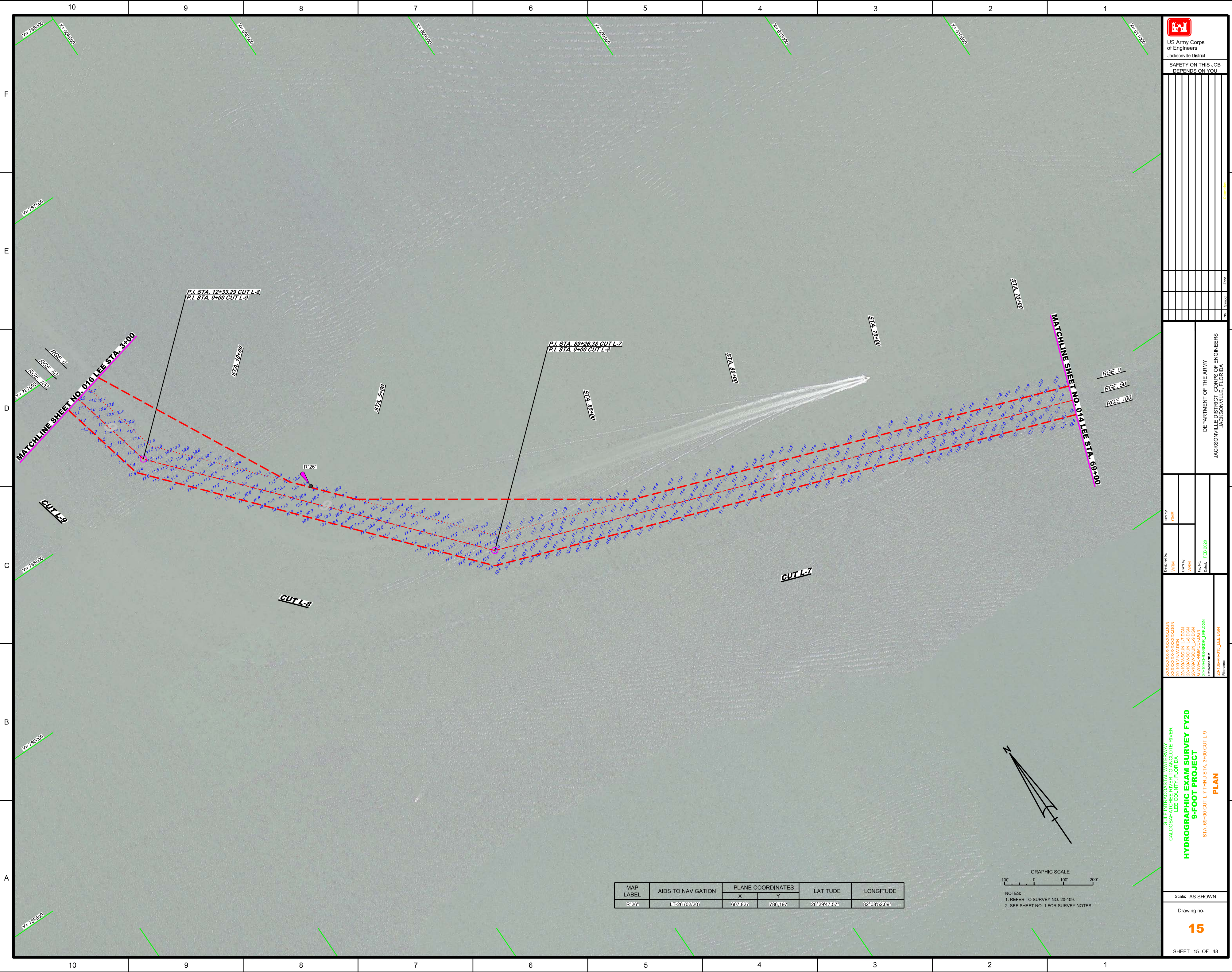
DEPARTMENT OF THE ARMY
 JACKSONVILLE DISTRICT, CORPS OF ENGINEERS
 JACKSONVILLE, FLORIDA

Call by: GHR
 Designed by: WRM
 Drawn by: WRM
 File No.: 20-108-0301_L2-DGN
 Date: FEB 2020
 Reference File: 20-108-0301_L2-DGN

GULF INTRACOSTAL WATERWAY
 CALOOSAHEE RIVER
 CALOOSAHEE COUNTY, FLORIDA
HYDROGRAPHIC EXAM SURVEY FY20
9-FOOT PROJECT
 STA. 4+00 CUT L-2 THRU STA. 16+00 CUT L-3
PLAN
 Scale: AS SHOWN
 Drawing no. **7**
 SHEET 07 OF 48

MAP LABEL	AIDS TO NAVIGATION	PLANE COORDINATES		LATITUDE	LONGITUDE
		X	Y		
G*11A	DBN-11A (02/20)	632.651	781.685	28°29'03.09"	82°04'22.12"
R*12	L-12 (02/20)	632.631	782.375	28°29'09.92"	82°04'19.04"






 US Army Corps of Engineers
 Jacksonville District
 SAFETY ON THIS JOB DEPENDS ON YOU

DEPARTMENT OF THE ARMY
 JACKSONVILLE DISTRICT, CORPS OF ENGINEERS
 JACKSONVILLE, FLORIDA

Designed by: WRM
 Drawn by: WRM
 Checked: FEB 2020
 File name: 20-109A-H01-L_EEE.DGN

GULF INTRACOSTAL WATERWAY
 CALOOSAHATCHEE RIVER
 CALOOSAHATCHEE COUNTY, FLORIDA
HYDROGRAPHIC EXAM SURVEY FY20
9-FOOT PROJECT
 STA. 69+00 CUT L-7 THRU STA. 3+00 CUT L-9
PLAN

Scale: AS SHOWN
 Drawing no. **15**
 SHEET 15 OF 48

MAP LABEL	AIDS TO NAVIGATION	PLANE COORDINATES		LATITUDE	LONGITUDE
		X	Y		
R'26"	L-26 (02/20)	607.827	786.197	26°29'47.57"	82°08'52.09"

GRAPHIC SCALE
 100' 0 100' 200'
 NOTES:
 1. REFER TO SURVEY NO. 20-109,
 2. SEE SHEET NO. 1 FOR SURVEY NOTES.

