

ST. LUCIE INLET / CROSSROADS MARTIN COUNTY, FLORIDA HYDROGRAPHIC EXAM SURVEY FY20 10-FOOT PROJECT

SURVEY NOTES

- REFER TO SURVEY NO. 20-100.
- SOUNDINGS ARE IN FEET AND TENTHS AND REFER TO NOAA'S REPORTED MEAN LOWER LOW WATER (MLLW) OF THE 1983-2001 TIDAL EPOCH.
- TIDAL REDUCTIONS WERE OBTAINED UTILIZING A REAL-TIME KINEMATIC (RTK) GPS AND REFERENCED TO MLLW UTILIZING A KINEMATIC TIDE DATUM (KTD) MODEL. KTD FILE NAME IS: "INDIANRIVER-STLUCIE-MARTIN-20140527.KTD".
- ALL ELEVATIONS ARE BELOW THE CHART DATUM UNLESS PRECEDED BY A (+) SIGN.
- PLANE COORDINATES ARE BASED ON THE TRANSVERSE MERCATOR PROJECTION FOR THE EAST ZONE OF FLORIDA AND REFERENCED TO NORTH AMERICAN DATUM OF 1983 (NAD83).
- ALL STATIONING REFERS TO THE CENTERLINE OF THE CHANNEL.
- THIS SURVEY WAS PERFORMED USING REAL-TIME KINEMATIC (RTK) GPS POSITIONING WITH THE FOLLOWING REFERENCE BASE LOCATION:
REFERENCE BASE LOCATED AT "T 693" (PID: 8BFH83)
- DEPTHS DEPICTED BY THIS SURVEY ARE REFERENCED TO MLLW, TIDAL EPOCH 1983-2001, AS REPORTED BY THE NATIONAL OCEANIC AND ATMOSPHERIC ADMINISTRATION (NOAA). A MODIFIED VERSION OF NOAA'S VDATUM MODEL WAS USED TO CALIBRATE TO THE PUBLISHED MLLW HEIGHTS OF THE BENCH MARK BELOW:
NOAA TIDAL STATION 872-2381 FOR ALL CUTS (PID: AF6967)
VERTICAL MEASUREMENTS WERE MADE USING AN EDGETECH 6205 COMBINED MULTI-BEAM AND SIDESCAN SONAR. ALL SOUNDINGS SHOWN ARE IN HIGH FREQUENCY.
- VESEL: SB-48 DATE OF SURVEY: 29 JAN 2020 CUT: IHW CUTS M3-M7, IMPOUNDMENT BASIN
- AIDS TO NAVIGATION WERE LOCATED DURING THIS SURVEY.
- THE INFORMATION DEPICTED ON THIS MAP REPRESENTS THE RESULTS OF SURVEYS MADE ON THE DATES INDICATED ABOVE AND CAN ONLY BE CONSIDERED AS INDICATING THE GENERAL CONDITIONS AT THAT TIME. THIS CHART IS SOLELY FOR THE DISTRIBUTION OF AVAILABLE DEPTHS AT THE TIME OF THE SURVEY.
- SURVEY ACCURACY PERFORMANCE STANDARDS, QUALITY CONTROL, AND QUALITY ASSURANCE REQUIREMENTS WERE FOLLOWED DURING THIS SURVEY IN ACCORDANCE WITH USACE EM 1110-2-1003, HYDROGRAPHIC SURVEYING, 30 NOV 2013.

LEGEND	
	MONUMENT
	LIGHTED BEACON
	GREEN DAYBEACON
	RED DAYBEACON
	RED LIGHTED BUOY
	GREEN LIGHTED BUOY
	CAN BUOY
	NUN BUOY
	TIDE STAFF
	PROJECT DEPTH

US Army Corps
of Engineers
Jacksonville District

SAFETY ON THIS JOB
DEPENDS ON YOU

DEPARTMENT OF THE ARMY
JACKSONVILLE DISTRICT, CORPS OF ENGINEERS
JACKSONVILLE, FLORIDA

Drawn by: WRM Checked by: GHR Date: JAN 2020	Project Title: ST. LUCIE INLET / CROSSROADS MARTIN COUNTY, FLORIDA HYDROGRAPHIC EXAM SURVEY FY20 10-FOOT PROJECT	MAP INDEX, LOCATION AND VICINITY Scale: AS SHOWN Drawing no. 1 / 6 SHEET 01 OF 11
---	--	---

ST. LUCIE INLET /
MARTIN COUNTY, FLORIDA
**HYDROGRAPHIC EXAM SURVEY FY20
10-FOOT PROJECT**
INDEX, LOCATION AND VICINITY
MAP



 US Army Corps of Engineers Jacksonville District SAFETY ON THIS JOB DEPENDS ON YOU	
Drawn by: WRM Checked by: GHR	Date: JAN 2020
DEPARTMENT OF THE ARMY JACKSONVILLE DISTRICT, CORPS OF ENGINEERS JACKSONVILLE, FLORIDA	
ST. LUCIE INLET MARTIN COUNTY, FLORIDA HYDROGRAPHIC EXAM SURVEY FY20 10-FOOT PROJECT STA. 28+00 THRU STA. 58+00 CUT-1 PLAN	
Scale: AS SHOWN Drawing no. 2 / 6 SHEET 03 OF 11	

GRAPHIC SCALE
 100' 0 100' 200'
 NOTES:
 1. REFER TO SURVEY NO. 20-100.
 2. SEE SHEET NO. 1 FOR SURVEY NOTES.



10

16

MATCHLINE SHEET NO. 4 STA. 58+00

MATCHLINE SHEET NO. 02 STA. 28+00

RGE 25
 RGE 100
 RGE 175

RGE 150
 RGE 100
 RGE 250

CUT-1

IMPOUNDMENT BASIN

STA. 58+00

STA. 56+00

STA. 54+00

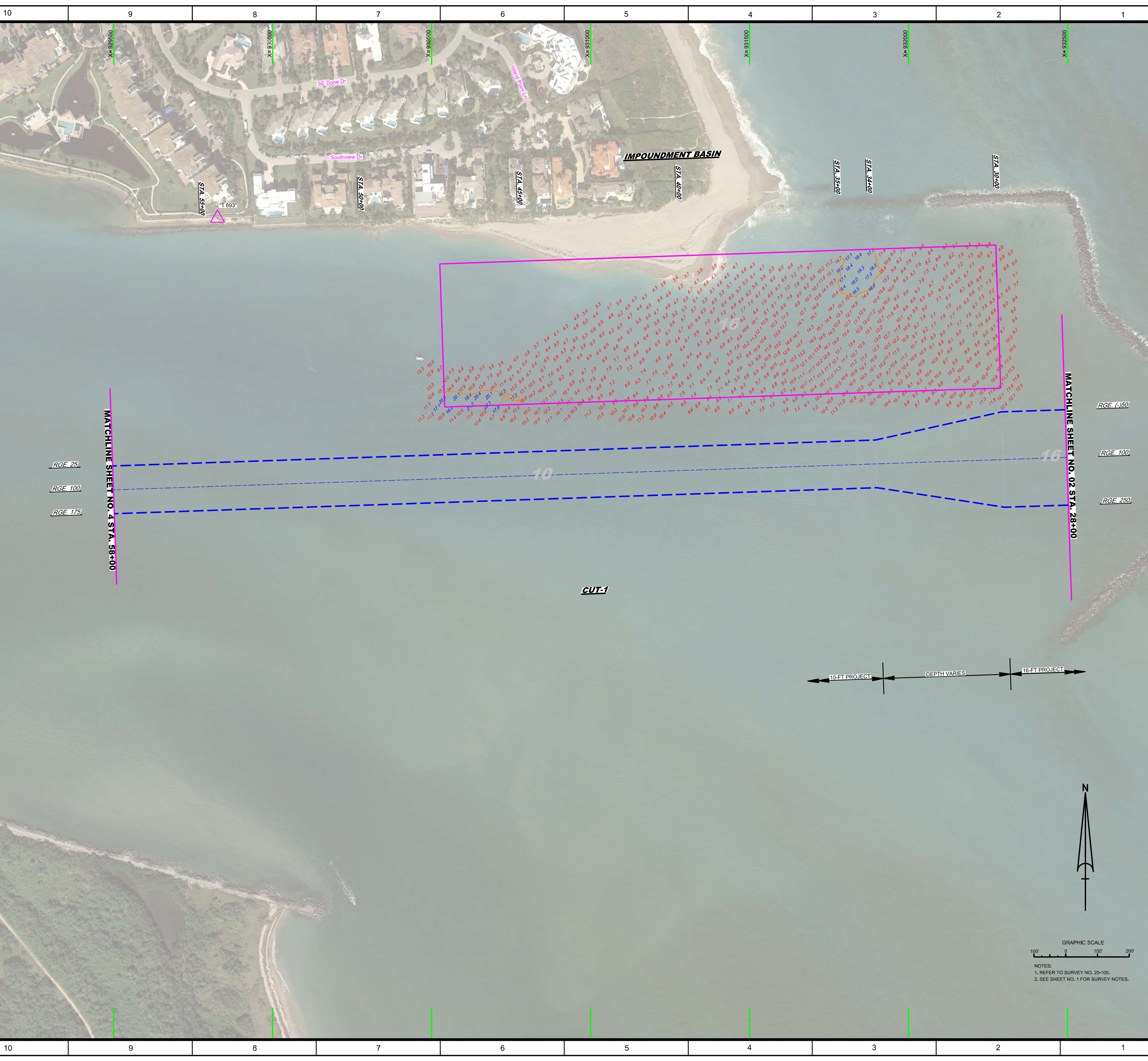
STA. 48+00

STA. 38+00

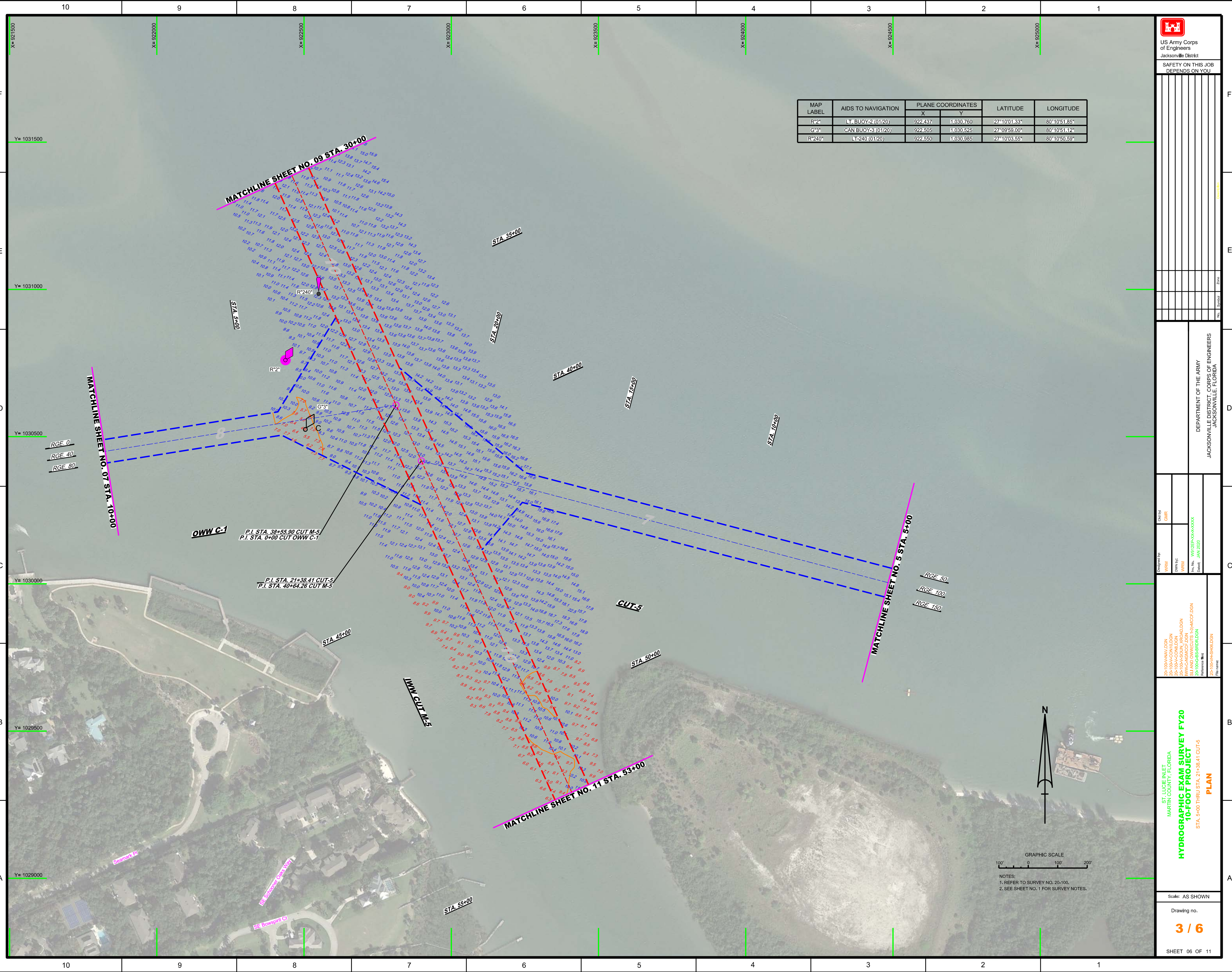
STA. 34+00

STA. 30+00

F
 E
 D
 C
 B
 A



MAP LABEL	AIDS TO NAVIGATION	PLANE COORDINATES		LATITUDE	LONGITUDE
		X	Y		
R-2	LT BUOY-2 (01/20)	922,437	1,030,760	27°10'01.33"	80°10'51.85"
G-3	CAN BUOY-3 (01/20)	922,505	1,030,525	27°09'59.00"	80°10'51.12"
R-240	LT-240 (01/20)	922,550	1,030,985	27°10'03.55"	80°10'50.59"



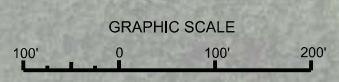
DEPARTMENT OF THE ARMY
JACKSONVILLE DISTRICT, CORPS OF ENGINEERS
JACKSONVILLE, FLORIDA

Checked by: GHR
Designed by: WRM
Drawn by: WRM
File No: W8225P-00-00-000
Date: JAN 2020

20-100-00-00-00.DGN
20-100-00-00-00.DGN
20-100-00-00-00.DGN
20-100-00-00-00.DGN
20-100-00-00-00.DGN
20-100-00-00-00.DGN

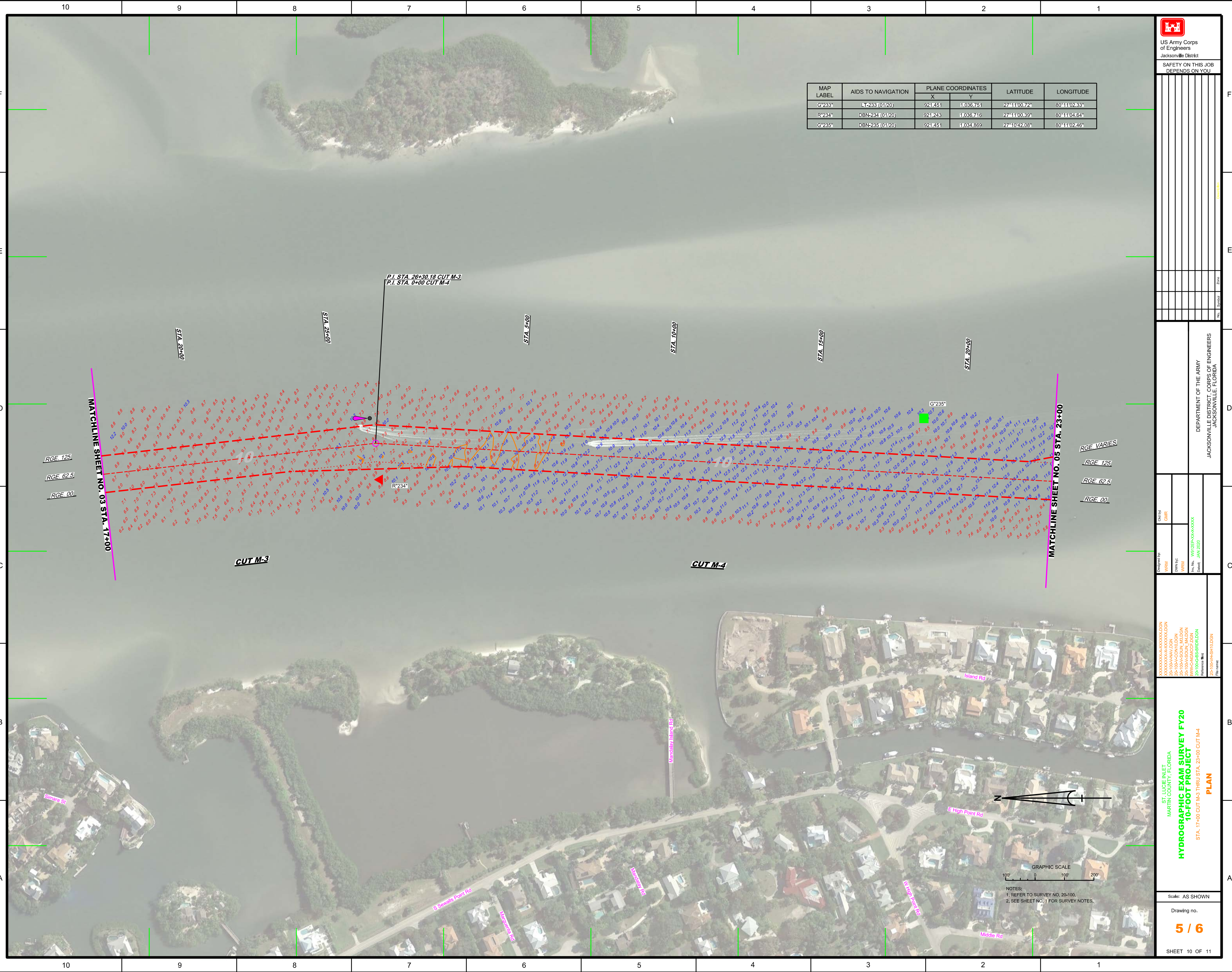
ST. LUCIE INLET
MARTIN COUNTY, FLORIDA
**HYDROGRAPHIC EXAM SURVEY FY20
10-FOOT PROJECT**
STA. 5+00 THRU STA. 21+38.41 CUT-5
PLAN

Scale: AS SHOWN
Drawing no.
3 / 6
SHEET 06 OF 11



NOTES:
1. REFER TO SURVEY NO. 20-100.
2. SEE SHEET NO. 1 FOR SURVEY NOTES.

MAP LABEL	AIDS TO NAVIGATION	PLANE COORDINATES		LATITUDE	LONGITUDE
		X	Y		
G*233*	LT-233 (01/20)	921.451	1.036.751	27°11'00.72"	80°11'02.33"
R*234*	DBN-234 (01/20)	921.243	1.036.716	27°11'00.39"	80°11'04.64"
G*235*	DBN-235 (01/20)	921.451	1.034.869	27°10'42.08"	80°11'02.46"



DEPARTMENT OF THE ARMY
JACKSONVILLE DISTRICT, CORPS OF ENGINEERS
JACKSONVILLE, FLORIDA

Checked By: GHR
Designed By: WRM
Drawn By: WRM
File No: WJ2255-00-00-000
Date: JAN 2020

XXXXXXXXXXXXXXXXXXXX
XXXXXXXXXXXXXXXXXXXX
XXXXXXXXXXXXXXXXXXXX
XXXXXXXXXXXXXXXXXXXX
XXXXXXXXXXXXXXXXXXXX
XXXXXXXXXXXXXXXXXXXX
XXXXXXXXXXXXXXXXXXXX
XXXXXXXXXXXXXXXXXXXX
XXXXXXXXXXXXXXXXXXXX
XXXXXXXXXXXXXXXXXXXX

ST. LUCIE INLET
MARTIN COUNTY, FLORIDA
**HYDROGRAPHIC EXAM SURVEY FY20
10-FOOT PROJECT**
STA. 17+00 CUT M-3 THRU STA. 23+00 CUT M-4
PLAN

Scale: AS SHOWN
Drawing no.
5 / 6
SHEET 10 OF 11

NOTES:
1. REFER TO SURVEY NO. 20-100.
2. SEE SHEET NO. 1 FOR SURVEY NOTES.

MATCHLINE SHEET NO. 03 STA. 17+00

MATCHLINE SHEET NO. 05 STA. 23+00

CUT M-3

CUT M-4

RGE VARIES
RGE 125
RGE 62.5
RGE 00

P.I. STA. 26+30.18 CUT M-3
P.I. STA. 0+00 CUT M-4

STA. 20+00

STA. 25+00

STA. 5+00

STA. 10+00

STA. 15+00

STA. 20+00

R7234*

G*235*

RGE 125

RGE 62.5

RGE 00

Sewalls St

Mandelway Rd

S Sewalls Point Rd

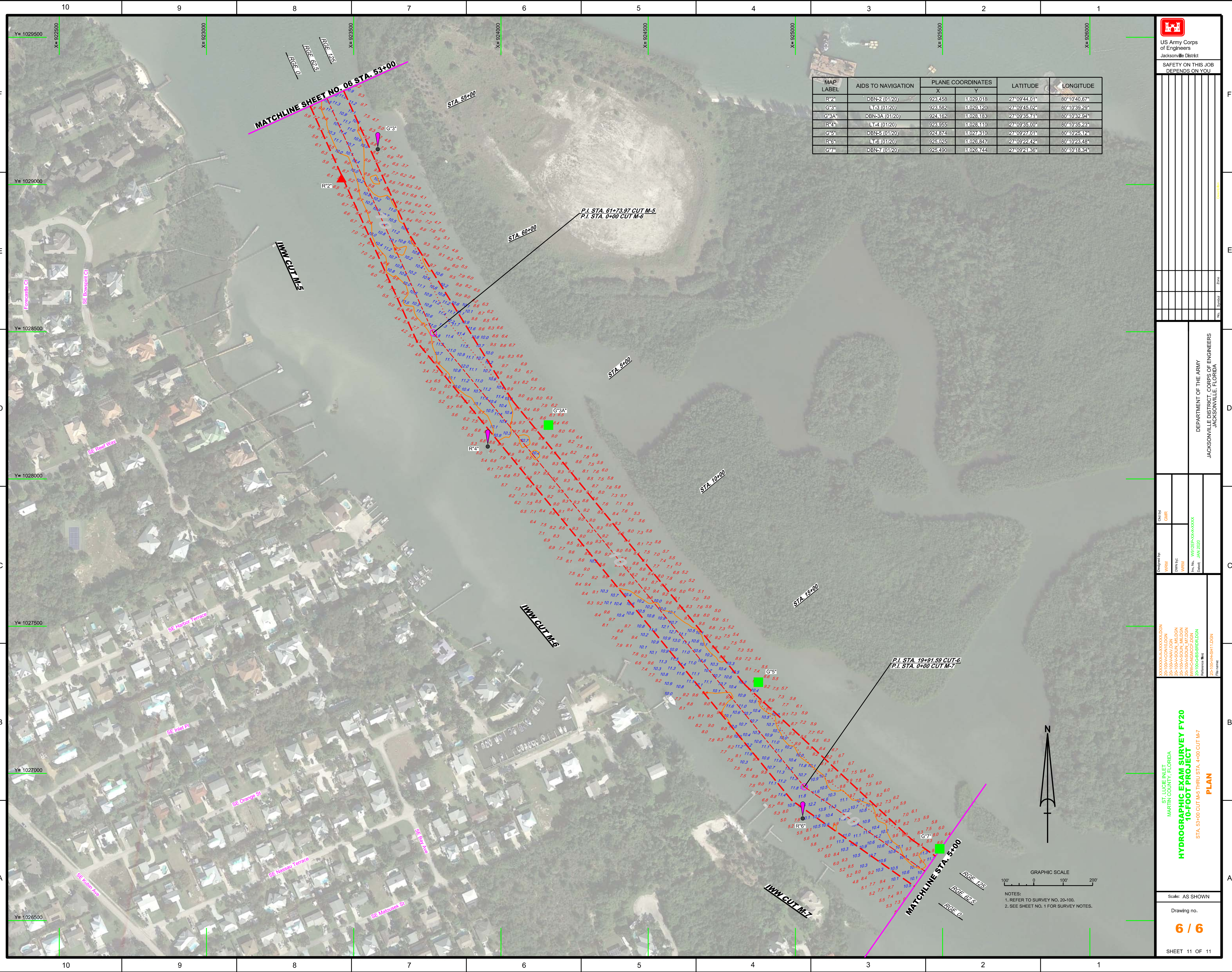
Mandelway Rd

E High Point Rd

E High Point Rd

Middle Rd

MAP LABEL	AIDS TO NAVIGATION	PLANE COORDINATES		LATITUDE	LONGITUDE
		X	Y		
R*2	DBN-2 (01/20)	923458	11029018	27°09'44.01"	80°10'40.67"
G*3	LT-3 (01/20)	923582	11029120	27°09'45.02"	80°10'39.29"
G*3A	DBN-3A (01/20)	924162	11028183	27°09'35.71"	80°10'32.24"
R*4	LT-4 (01/20)	923955	11028110	27°09'35.00"	80°10'35.23"
G*5	DBN-5 (01/20)	924374	11027510	27°09'27.01"	80°10'25.12"
R*6	LT-6 (01/20)	925025	11026847	27°09'22.42"	80°10'23.48"
G*7	DBN-7 (01/20)	925490	11026744	27°09'21.86"	80°10'18.34"



DEPARTMENT OF THE ARMY
JACKSONVILLE DISTRICT, CORPS OF ENGINEERS
JACKSONVILLE, FLORIDA

Drawn by: **WRM**
 Designated by: **WRM**
 Checked by: **GHR**
 Date: **JAN 2020**
 File name: **2D-100VHSR11.DGN**

ST. LUCIE INLET
MARTIN COUNTY, FLORIDA
HYDROGRAPHIC EXAM SURVEY FY20
10-FOOT PROJECT
 STA. 53+00 CUT M-5 THRU STA. 4+00 CUT M-7
PLAN

GRAPHIC SCALE
 0 100 200
 NOTES:
 1. REFER TO SURVEY NO. 20-100.
 2. SEE SHEET NO. 1 FOR SURVEY NOTES.