

 US Army Corps of Engineers

 Jacksonville District

 SAFETY ON THIS JOB

 DEPENDS ON YOU

DEPARTMENT OF THE ARMY

 JACKSONVILLE DISTRICT, CORPS OF ENGINEERS

 JACKSONVILLE, FLORIDA

Designated by: **WRM**

 Drawn by: **WRM**

 Date: **JAN 2020**

 Checked: **JAN 2020**

PROJECT CONDITION SURVEY FY20

4, 9 AND 12-FOOT PROJECT

 STA. 33+00 CUT-1 THRU STA. 22+00 CUT-2

PLAN

Scale: AS SHOWN

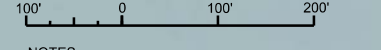
 Drawing no.

3

 SHEET 03 OF 28

MAP LABEL	AIDS TO NAVIGATION	PLANE COORDINATES		LATITUDE	LONGITUDE
		X	Y		
G-3	DBN-3 (12/19)	459,355	11164,543	27°32'09.00"	82°40'08.53"
R-4	T-1 (12/19)	440,235	11163,434	27°31'58.06"	82°39'58.68"

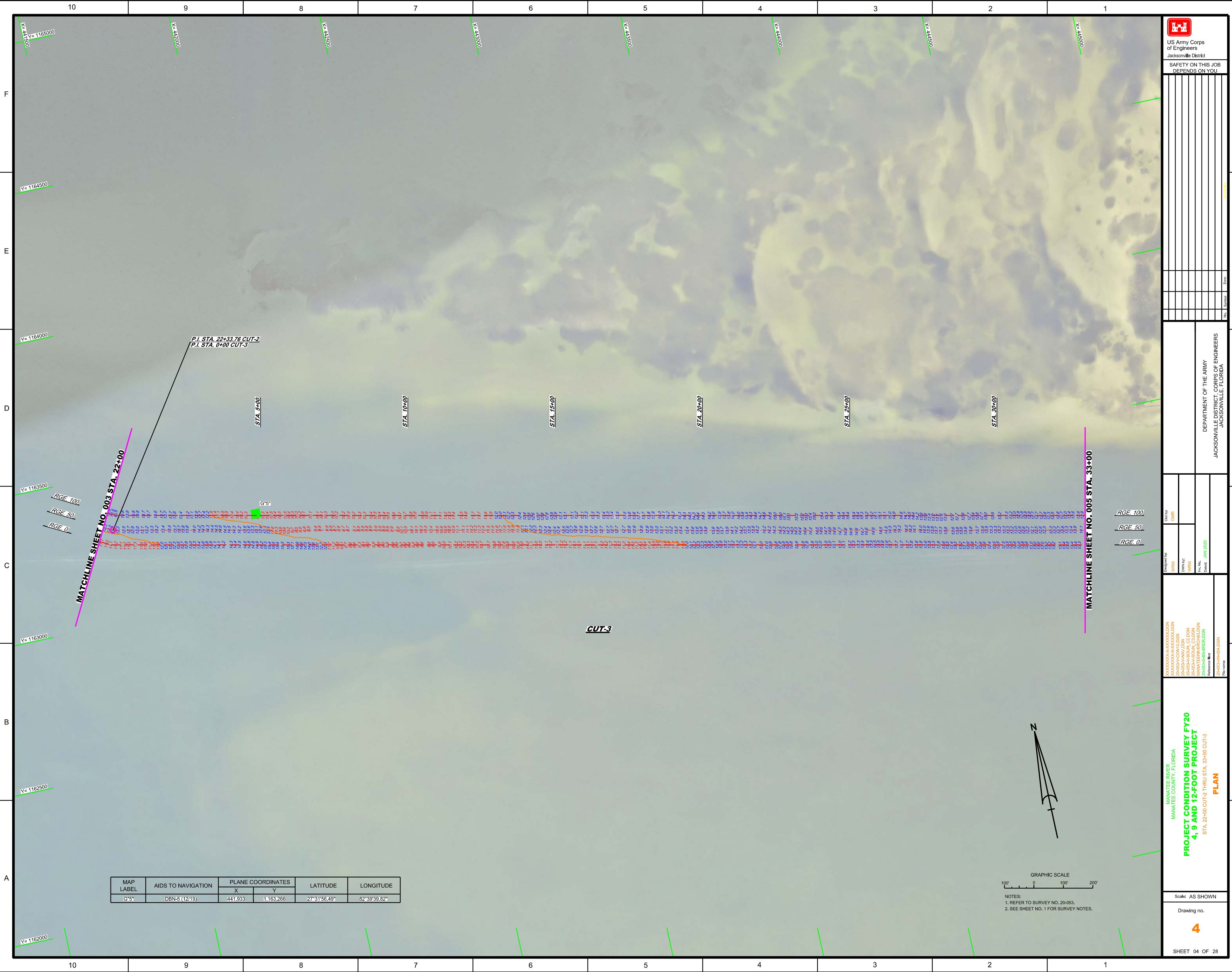
GRAPHIC SCALE



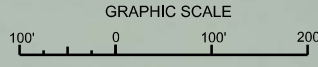
 NOTES:

 1. REFER TO SURVEY NO. 20-053.


 2. SEE SHEET NO. 1 FOR SURVEY NOTES.



MAP LABEL	AIDS TO NAVIGATION	PLANE COORDINATES		LATITUDE	LONGITUDE
		X	Y		
G-5*	DBN-5(12/19)	441,933	1,163,266	27°31'56.49"	82°39'39.82"

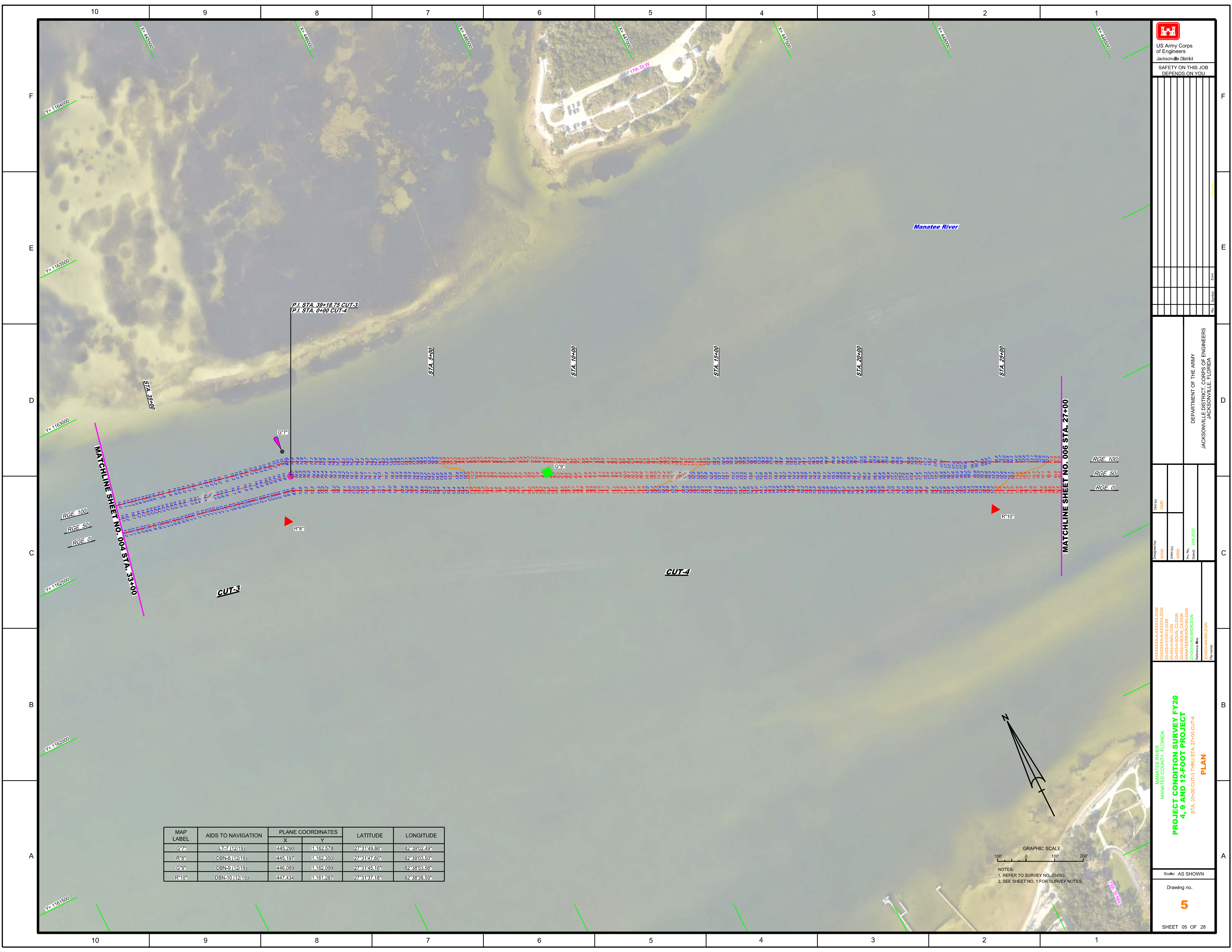


NOTES:
 1. REFER TO SURVEY NO. 20-053.
 2. SEE SHEET NO. 1 FOR SURVEY NOTES.



US Army Corps of Engineers
 Jacksonville District
 SAFETY ON THIS JOB
 DEPENDS ON YOU

Designated By: WRM Drawn By: WRM Date: JAN 2020	Checked By: GHR Date:
DEPARTMENT OF THE ARMY JACKSONVILLE DISTRICT, CORPS OF ENGINEERS JACKSONVILLE, FLORIDA	
PROJECT CONDITION SURVEY FY20 4, 9 AND 12-FOOT PROJECT STA. 22+00 CUT-2 THRU STA. 33+00 CUT-3 PLAN	
Scale: AS SHOWN Drawing no. 4 SHEET 04 OF 28	



P.I. STA. 39+18.75 CUT-3
 P.I. STA. 0+00 CUT-4

STA. 33+00

STA. 5+00

STA. 10+00

STA. 15+00

STA. 20+00

STA. 25+00

Manatee River

CUT-3

CUT-4

MATCHLINE SHEET NO. 006 STA. 27+00

MATCHLINE SHEET NO. 004 STA. 33+00

RGE. 100
 RGE. 50
 RGE. 0

MAP LABEL	AIDS TO NAVIGATION	PLANE COORDINATES		LATITUDE	LONGITUDE
		X	Y		
G*7	LT-7 (12/19)	445,290	1,162,578	27°31'49.86"	82°39'02.49"
R*8	DBN8 (12/19)	445,197	1,162,350	27°31'47.60"	82°39'03.50"
G*9	DBN-9 (12/19)	446,089	1,162,099	27°31'45.16"	82°38'53.58"
R*10	DBN-10 (12/19)	447,434	1,161,287	27°31'37.18"	82°38'38.59"



GRAPHIC SCALE
 100' 0 100' 200'
 NOTES:
 1. REFER TO SURVEY NO. 20-053.
 2. SEE SHEET NO. 1 FOR SURVEY NOTES.

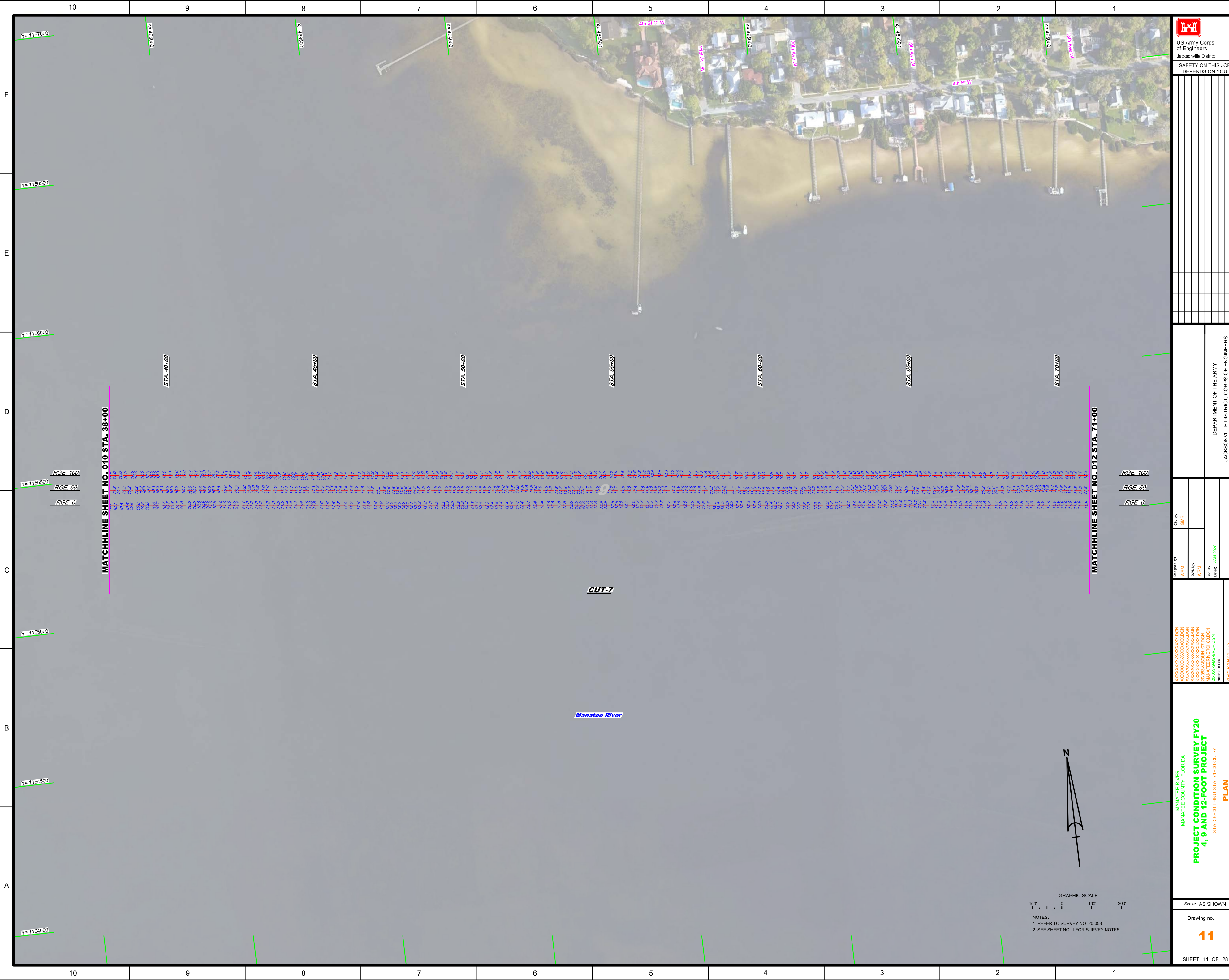
US Army Corps of Engineers
 Jacksonville District
 SAFETY ON THIS JOB DEPENDS ON YOU

Checked by:	GHR
Designed by:	WRM
DRAWN BY:	WRM
FILE NO.:	MANATEE RIVER
DATE:	JAN 2020

DEPARTMENT OF THE ARMY
 JACKSONVILLE DISTRICT, CORPS OF ENGINEERS
 JACKSONVILLE, FLORIDA

MANATEE RIVER
 MANATEE COUNTY, FLORIDA
PROJECT CONDITION SURVEY FY20
4, 9 AND 12-FOOT PROJECT
 STA. 33+00 CUT-3 THRU STA. 27+00 CUT-4
PLAN

Scale: AS SHOWN
 Drawing no.
5
 SHEET 05 OF 28



MATCHLINE SHEET NO. 010 STA. 38+00

MATCHLINE SHEET NO. 012 STA. 71+00

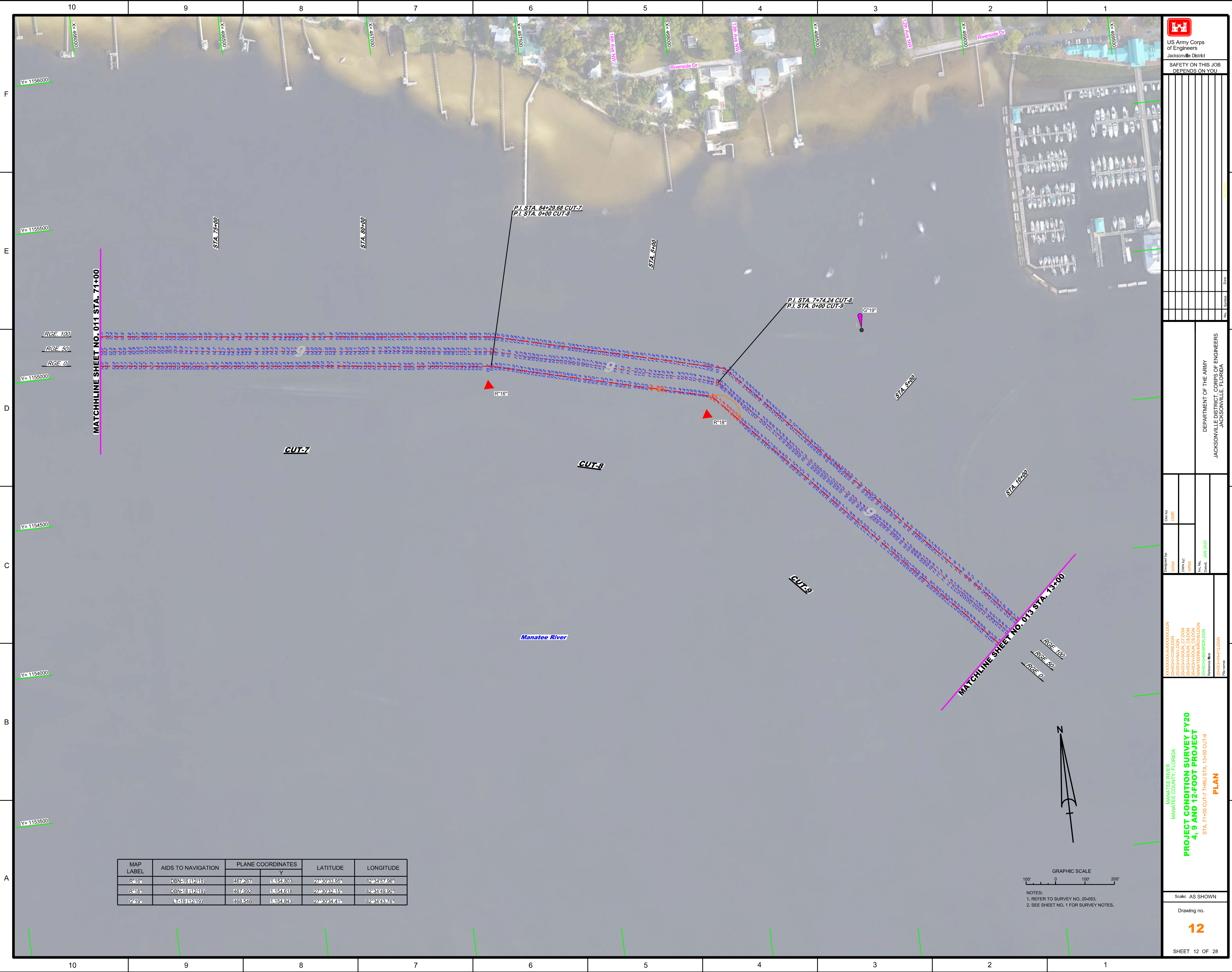
Y= 1157000
Y= 1156500
Y= 1156000
Y= 1155500
Y= 1155000
Y= 1154500
Y= 1154000

STA. 40+00 STA. 45+00 STA. 50+00 STA. 55+00 STA. 60+00 STA. 65+00 STA. 70+00

RGE. 100
RGE. 50
RGE. 0

RGE. 100
RGE. 50
RGE. 0

<p>US Army Corps of Engineers Jacksonville District</p>		<p>SAFETY ON THIS JOB DEPENDS ON YOU</p>	
<p>DEPARTMENT OF THE ARMY JACKSONVILLE DISTRICT, CORPS OF ENGINEERS JACKSONVILLE, FLORIDA</p>		<p>Scale: AS SHOWN</p>	
<p>PROJECT CONDITION SURVEY FY20 4, 9 AND 12-FOOT PROJECT STA. 39+00 THRU STA. 71+00 CUT-7 PLAN</p>		<p>Drawing no. 11</p>	
<p>MANATEE RIVER MANATEE COUNTY, FLORIDA</p>		<p>SHEET 11 OF 28</p>	




 US Army Corps of Engineers
 Jacksonville District
 SAFETY ON THIS JOB
 DEPENDS ON YOU

DEPARTMENT OF THE ARMY
 JACKSONVILLE DISTRICT, CORPS OF ENGINEERS
 JACKSONVILLE, FLORIDA

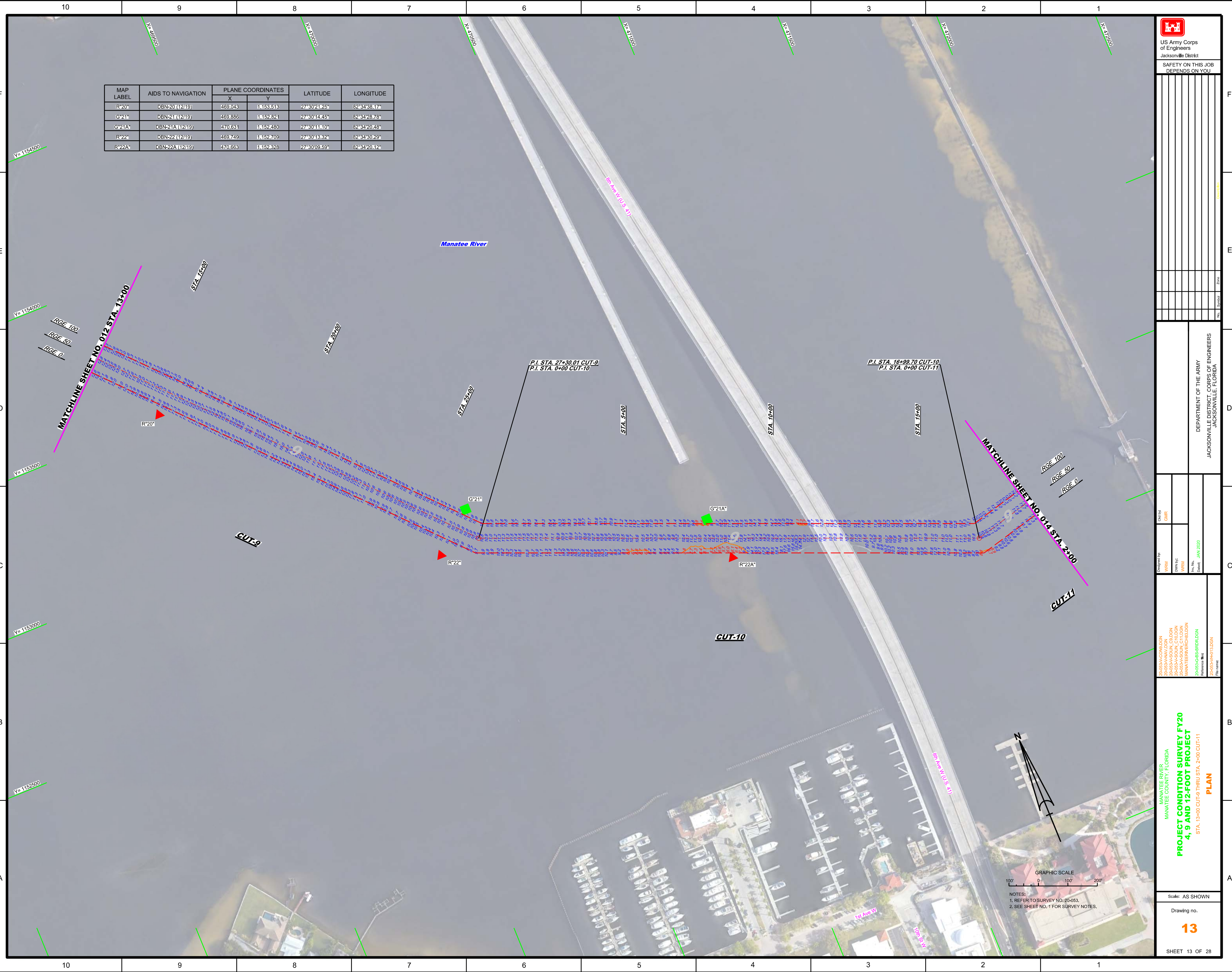
Designed by: WRM
 Drawn by: WRM
 Checked by: WRM
 Date: JAN 2020

MANATEE RIVER
 MANATEE COUNTY, FLORIDA
PROJECT CONDITION SURVEY FY20
4, 9 AND 12-FOOT PROJECT
 STA. 71+00 CUT-7 THRU STA. 13+00 CUT-9
PLAN

Scale: AS SHOWN
 Drawing no.
12
 SHEET 12 OF 28

MAP LABEL	AIDS TO NAVIGATION	PLANE COORDINATES		LATITUDE	LONGITUDE
		X	Y		
R*16	DBN-16 (1219)	467.267	1154.803	27°30'33.95"	82°34'57.96"
R*18	DBN-18 (1219)	467.692	1154.618	27°30'32.15"	82°34'49.90"
G*19	11549 (1219)	468.646	1154.843	27°30'34.41"	82°34'43.76"

GRAPHIC SCALE
 100' 0 100' 200'
 NOTES:
 1. REFER TO SURVEY NO. 20-053.
 2. SEE SHEET NO. 1 FOR SURVEY NOTES.



MAP LABEL	AIDS TO NAVIGATION	PLANE COORDINATES		LATITUDE	LONGITUDE
		X	Y		
R*20*	DBN-20 (1249)	469,043	1152,618	27°30'21.25"	82°34'38.17"
G*21*	DBN-21 (1249)	469,886	1152,821	27°30'14.55"	82°34'28.76"
G*21A*	DBN-21A (1249)	470,631	1152,480	27°30'11.10"	82°34'20.48"
R*22*	DBN-22 (1249)	469,749	1152,709	27°30'13.82"	82°34'30.29"
R*22A*	DBN-22A (1249)	470,663	1152,828	27°30'09.59"	82°34'20.12"

US Army Corps of Engineers
Jacksonville District

SAFETY ON THIS JOB
DEPENDS ON YOU

DEPARTMENT OF THE ARMY
JACKSONVILLE DISTRICT, CORPS OF ENGINEERS
JACKSONVILLE, FLORIDA

Drawn by: WRM
Checked by: GHR
Date: JAN 2020

PROJECT CONDITION SURVEY FY20
4, 9 AND 12-FOOT PROJECT
STA. 13+00 CUT-9 THRU STA. 2+00 CUT-11
PLAN

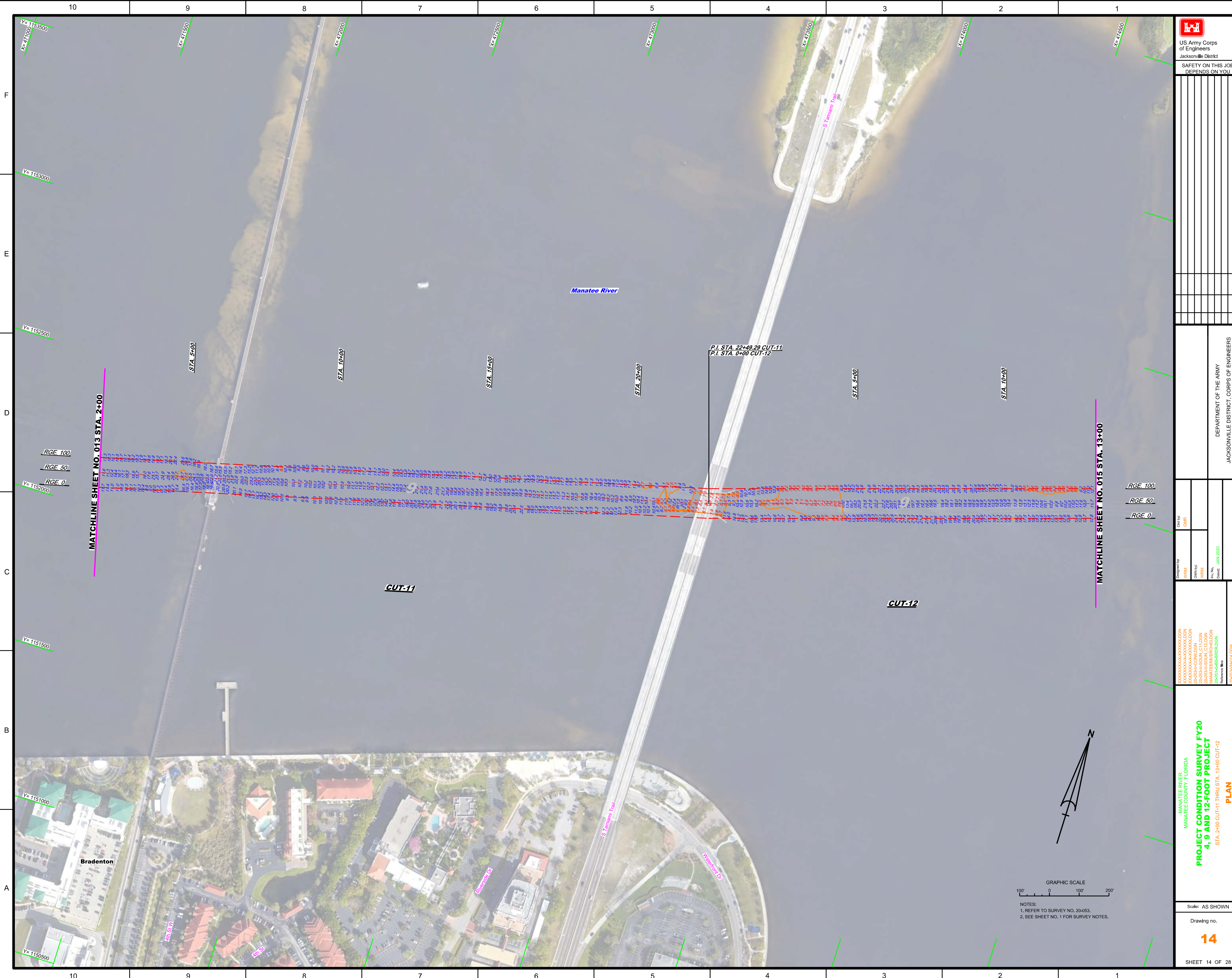
Scale: AS SHOWN

Drawing no.
13

SHEET 13 OF 28

GRAPHIC SCALE
100' 0 100' 200'

NOTES:
1. REFER TO SURVEY NO. 20-053.
2. SEE SHEET NO. 1 FOR SURVEY NOTES.



US Army Corps of Engineers
 Jacksonville District
 SAFETY ON THIS JOB DEPENDS ON YOU

DEPARTMENT OF THE ARMY
 JACKSONVILLE DISTRICT, CORPS OF ENGINEERS
 JACKSONVILLE, FLORIDA

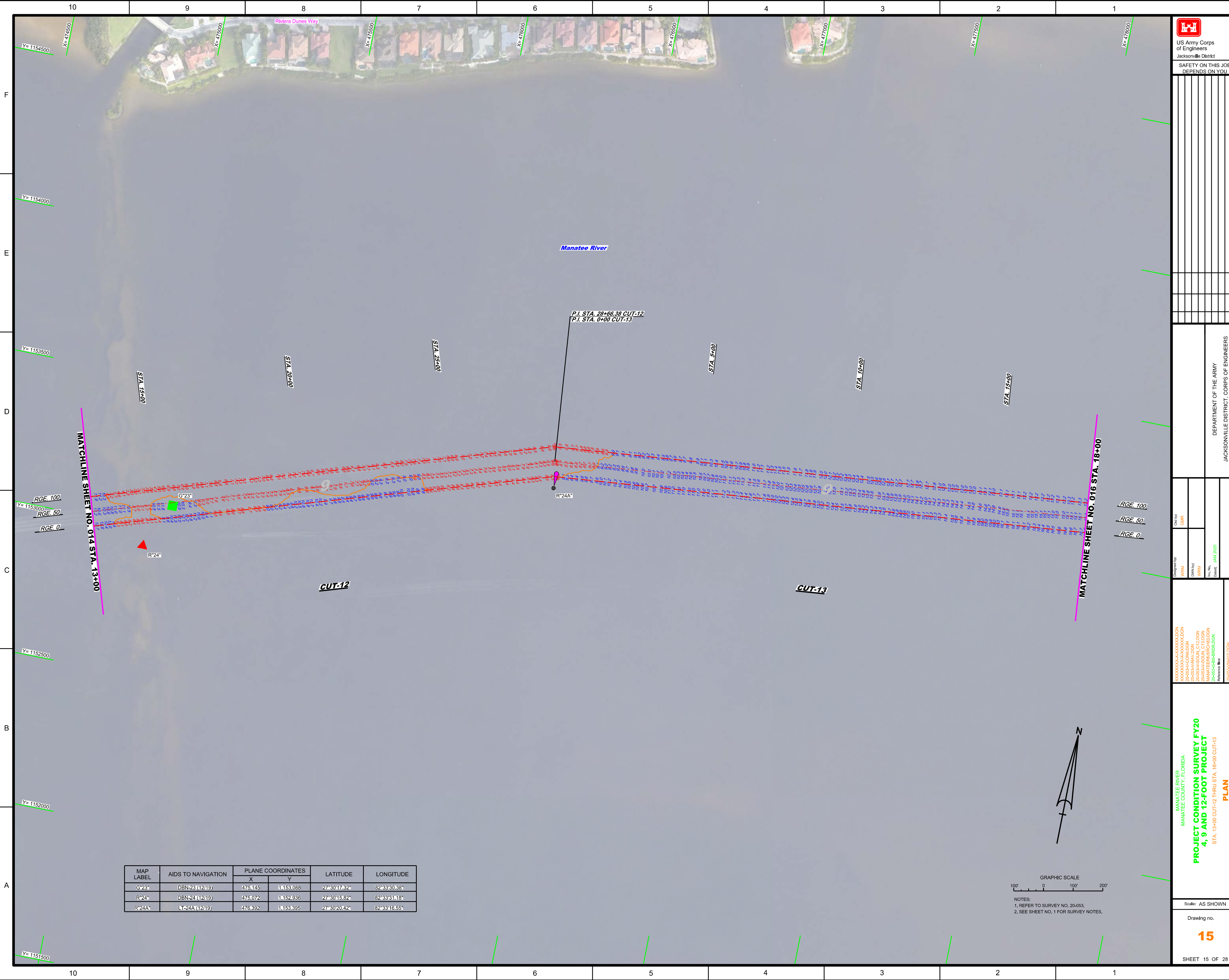
Designed by: WRM
 Drawn by: WRM
 Check by: GHR
 Date: JAN 2020

MANATEE RIVER
 MANATEE COUNTY, FLORIDA
PROJECT CONDITION SURVEY FY20
4, 9 AND 12-FOOT PROJECT
 STA. 2+00 CUT-11 THRU STA. 13+00 CUT-12
PLAN

Scale: AS SHOWN
 Drawing no. **14**
 SHEET 14 OF 28



NOTES:
 1. REFER TO SURVEY NO. 20-053.
 2. SEE SHEET NO. 1 FOR SURVEY NOTES.



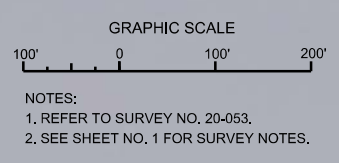
Dist.	Symbol	Zone

DEPARTMENT OF THE ARMY
JACKSONVILLE DISTRICT, CORPS OF ENGINEERS
JACKSONVILLE, FLORIDA

Designed by: **WRM**
 Checked by: **GHR**
 Drawn by: **WRM**
 Date: **JAN 2020**

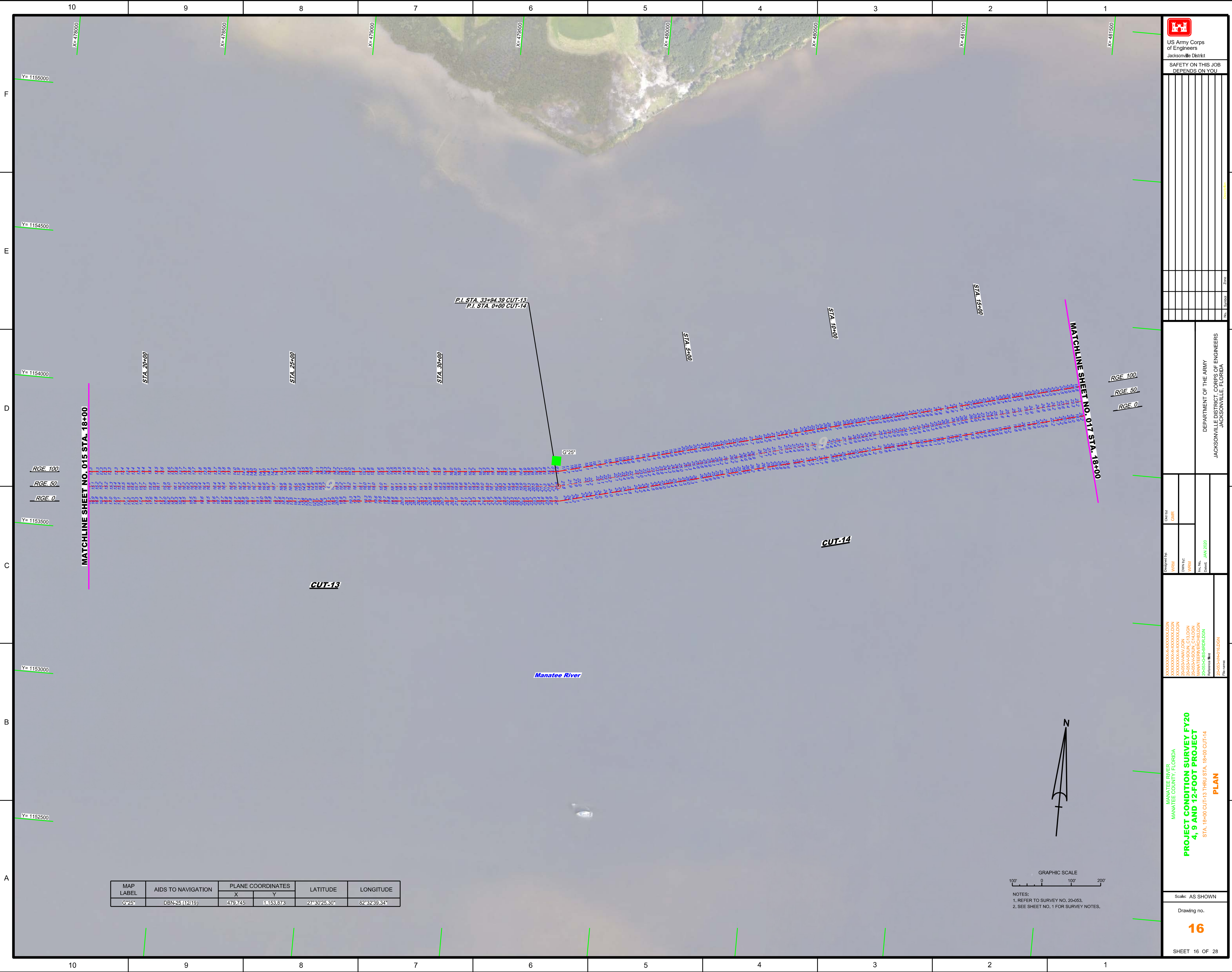
MANATEE RIVER
MANATEE COUNTY, FLORIDA
PROJECT CONDITION SURVEY FY20
4, 9 AND 12-FOOT PROJECT
STA. 13+00 CUT-12 THRU STA. 18+00 CUT-13
PLAN

MAP LABEL	AIDS TO NAVIGATION	PLANE COORDINATES		LATITUDE	LONGITUDE
		X	Y		
G*23*	DBN23 (1219)	475.145	1153.088	27°30'17.32"	82°33'30.38"
R*24*	DBN24 (1219)	475.072	1152.936	27°30'15.82"	82°33'31.18"
R*24A*	LT-24A (1219)	476.392	1153.395	27°30'20.42"	82°33'16.55"



NOTES:
1. REFER TO SURVEY NO. 20-053.
2. SEE SHEET NO. 1 FOR SURVEY NOTES.

Scale: AS SHOWN
Drawing no.
15
SHEET 15 OF 28



MATCHLINE SHEET NO. 015 STA. 18+00

MATCHLINE SHEET NO. 017 STA. 18+00

P.I. STA. 33+94.39 CUT-13
P.I. STA. 0+00 CUT-14

G*25'

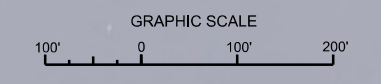
Manatee River

CUT-13

CUT-14

RGE 100
RGE 50
RGE 0

MAP LABEL	AIDS TO NAVIGATION	PLANE COORDINATES		LATITUDE	LONGITUDE
		X	Y		
G*25'	DBN-25 (1219)	479,745	1,153,873	27°30'25.30"	82°32'39.34"



NOTES:
1. REFER TO SURVEY NO. 20-053.
2. SEE SHEET NO. 1 FOR SURVEY NOTES.

US Army Corps of Engineers
Jacksonville District

SAFETY ON THIS JOB
DEPENDS ON YOU

DEPARTMENT OF THE ARMY
JACKSONVILLE DISTRICT, CORPS OF ENGINEERS
JACKSONVILLE, FLORIDA

Drawn by: WRM
Checked by: GHR
Date: JAN 2020

MANATEE RIVER
MANATEE COUNTY, FLORIDA

**PROJECT CONDITION SURVEY FY20
4, 9 AND 12-FOOT PROJECT**

STA. 18+00 CUT-13 THRU STA. 18+00 CUT-14

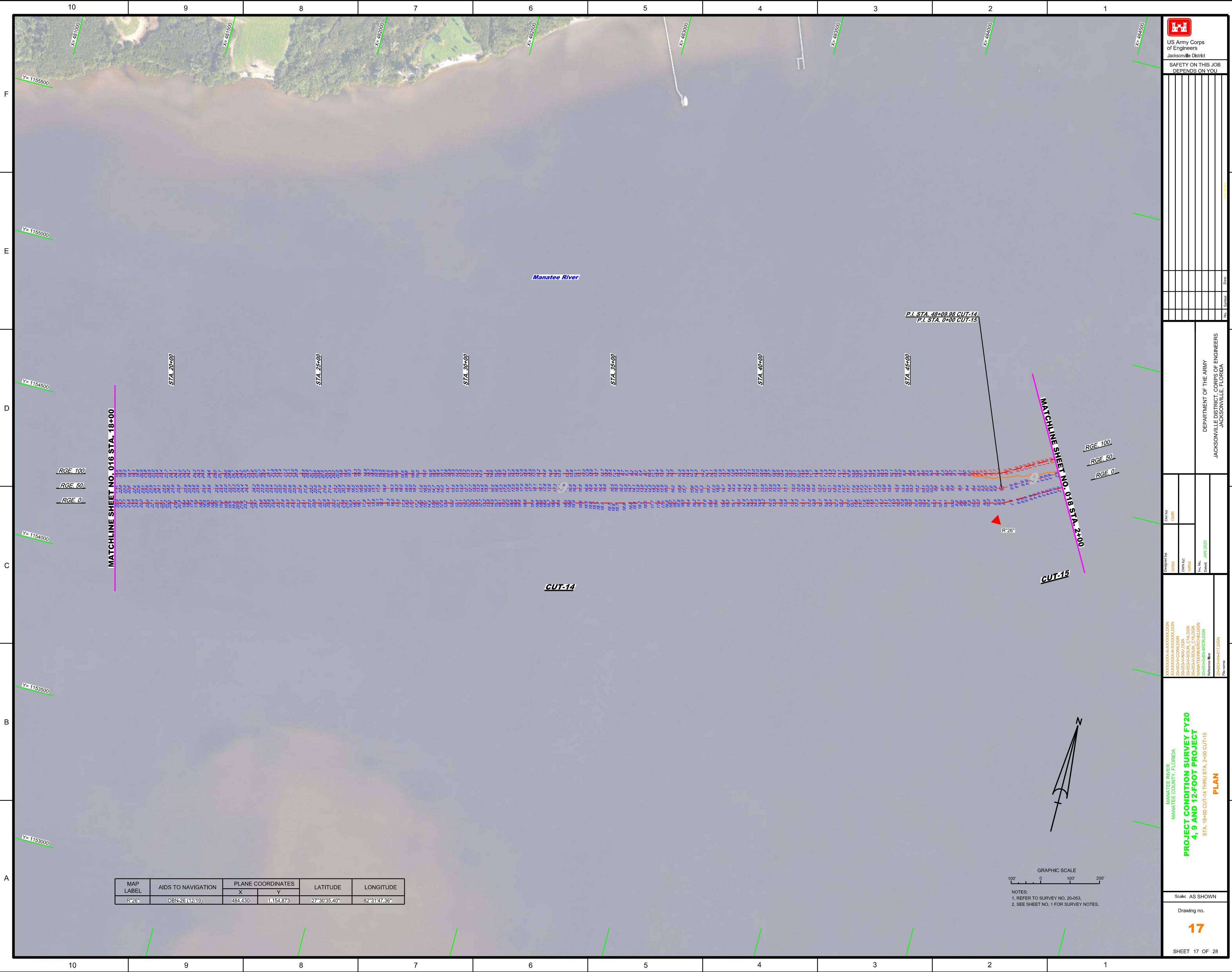
PLAN

Scale: AS SHOWN

Drawing no.

16

SHEET 16 OF 28



MATCHLINE SHEET NO. 016 STA. 18+00

MATCHLINE SHEET NO. 018 STA. 2+00

RGE. 100
RGE. 50
RGE. 0

RGE. 100
RGE. 50
RGE. 0

MAP LABEL	AIDS TO NAVIGATION	PLANE COORDINATES		LATITUDE	LONGITUDE
		X	Y		
R ²⁶	DBN-26 (12/19)	484,430	1,154,873	27°30'35.40"	82°31'47.36"

GRAPHIC SCALE
100' 0 100' 200'
NOTES:
1. REFER TO SURVEY NO. 20-053.
2. SEE SHEET NO. 1 FOR SURVEY NOTES.

US Army Corps of Engineers
Jacksonville District

SAFETY ON THIS JOB
DEPENDS ON YOU

DEPARTMENT OF THE ARMY
JACKSONVILLE DISTRICT, CORPS OF ENGINEERS
JACKSONVILLE, FLORIDA

Drawn by: GHR
Checked by: GHR
Designed by: WRM
DWG No: WRM
File No: WRM
Date: JAN 2020

MANATEE RIVER
MANATEE COUNTY, FLORIDA

**PROJECT CONDITION SURVEY FY20
4, 9 AND 12-FOOT PROJECT**

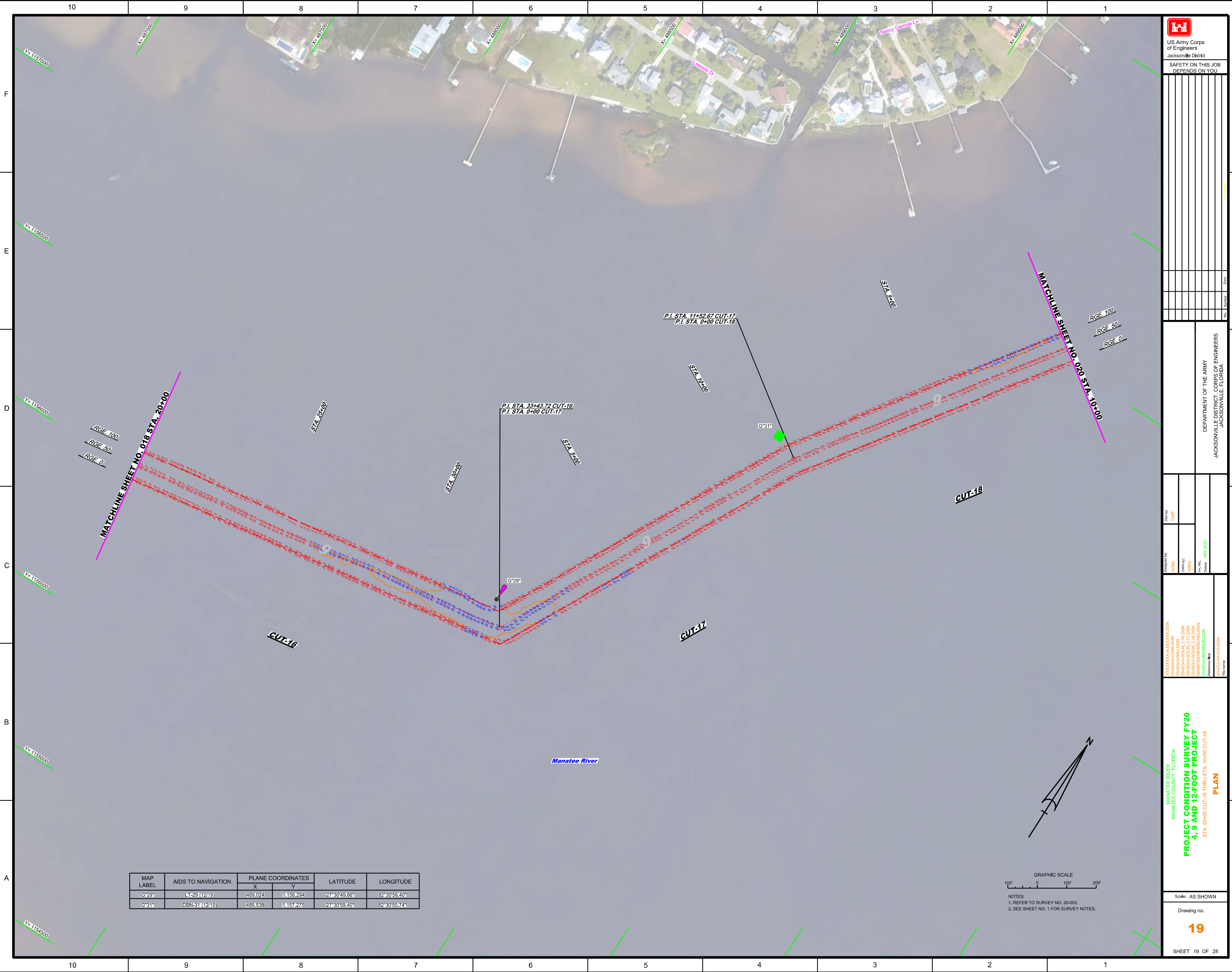
STA. 18+00 CUT-14 THRU STA. 2+00 CUT-15


PLAN

Scale: AS SHOWN

Drawing no.
17

SHEET 17 OF 28




 US Army Corps of Engineers
 Jacksonville District
 SAFETY ON THIS JOB
 DEPENDS ON YOU

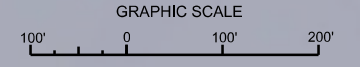
DEPARTMENT OF THE ARMY
 JACKSONVILLE DISTRICT, CORPS OF ENGINEERS
 JACKSONVILLE, FLORIDA

Designed by: WRM
 Drawn by: WRM
 Checked: JAN 2020
 File name: 20-053-018.DGN

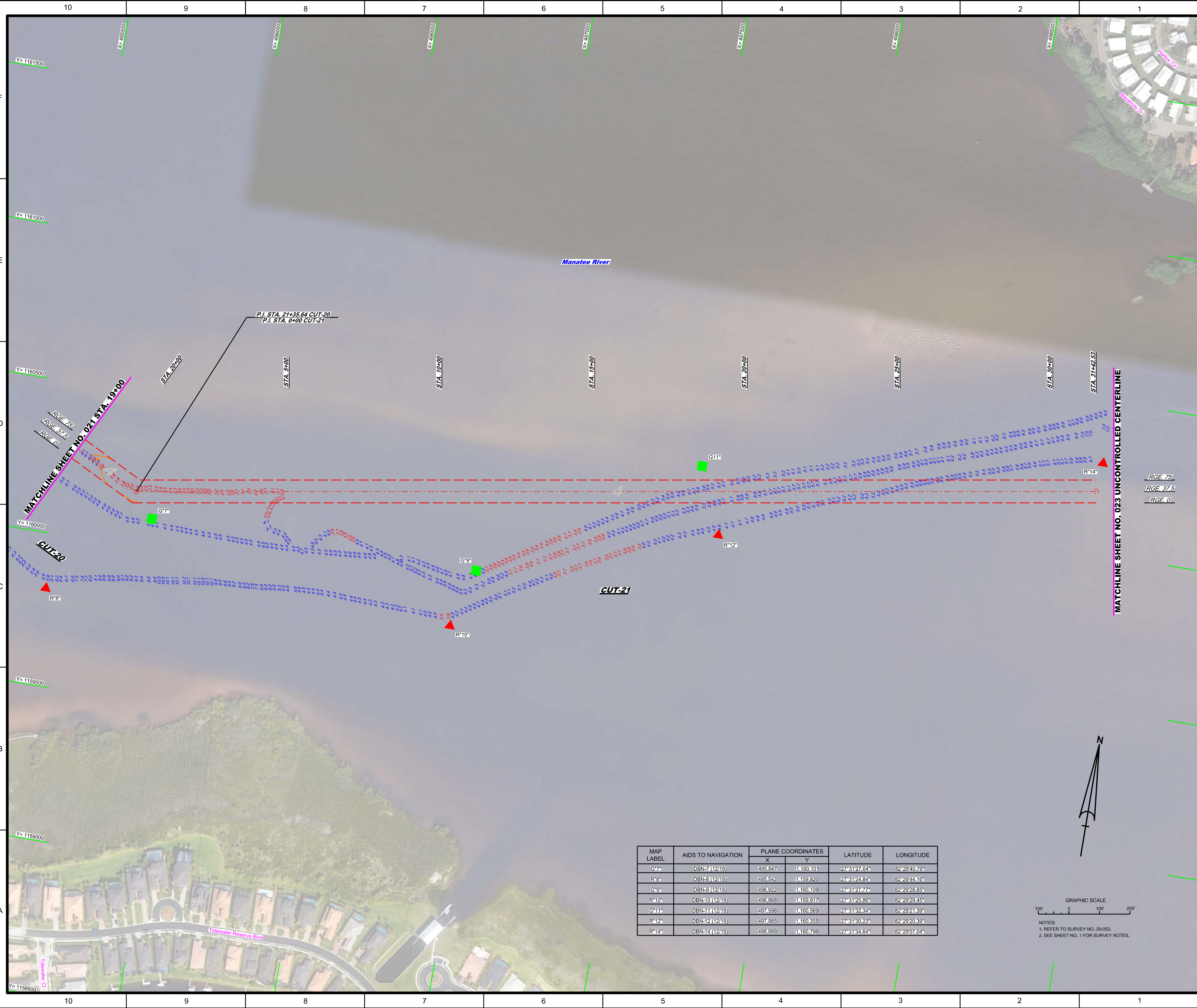
MANATEE RIVER
 MANATEE COUNTY, FLORIDA
PROJECT CONDITION SURVEY FY20
4, 9 AND 12-FOOT PROJECT
 STA. 20+00 CUT-16 THRU STA. 10+00 CUT-18
PLAN

Scale: AS SHOWN
 Drawing no.
19
 SHEET 19 OF 28

MAP LABEL	AIDS TO NAVIGATION	PLANE COORDINATES		LATITUDE	LONGITUDE
		X	Y		
G*29*	LT-29 (1219)	489,024	1,156,294	27°30'49.66"	82°30'56.40"
G*31*	DBN-31 (1219)	489,538	1,157,275	27°30'59.40"	82°30'50.74"

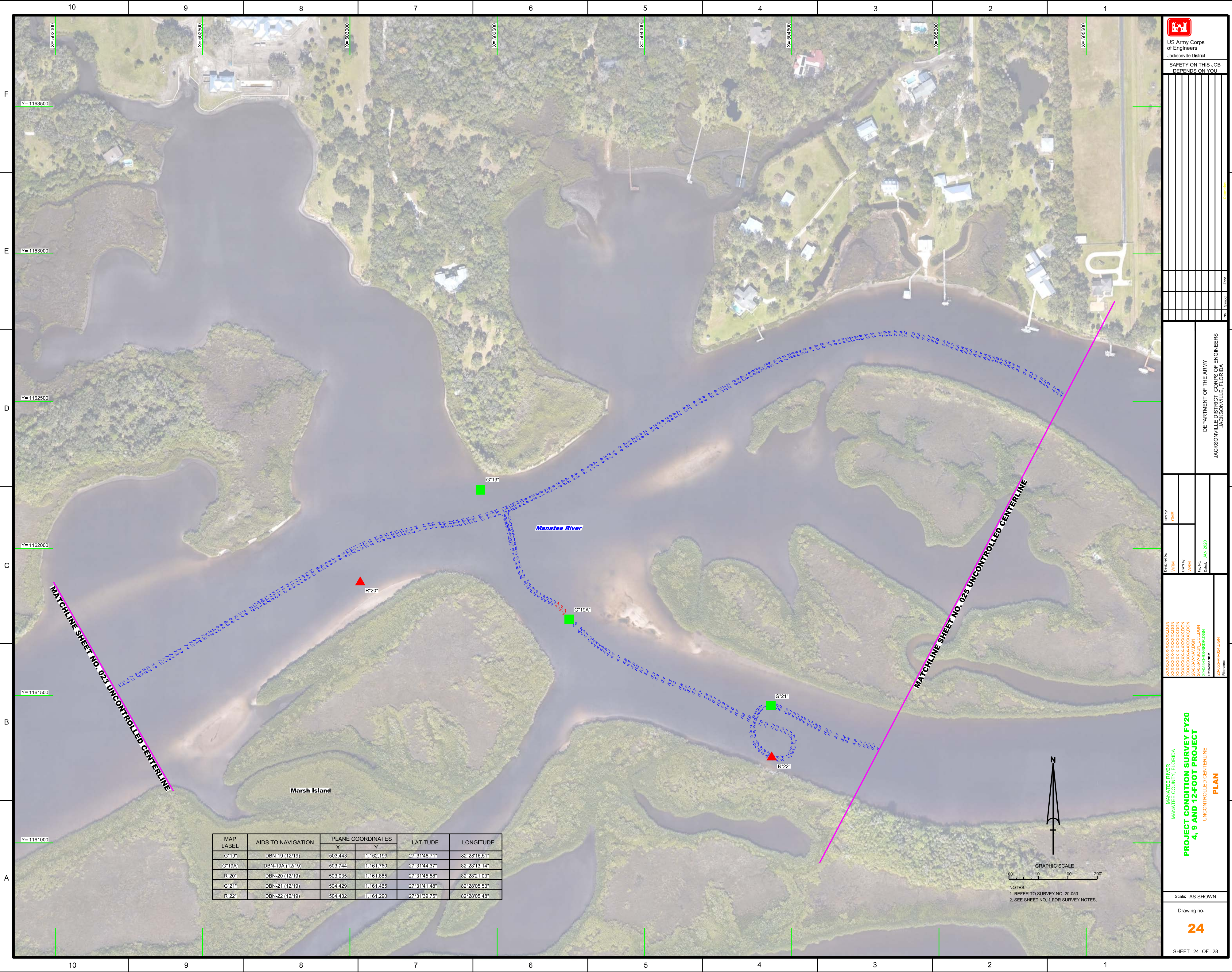


NOTES:
 1. REFER TO SURVEY NO. 20-053.
 2. SEE SHEET NO. 1 FOR SURVEY NOTES.

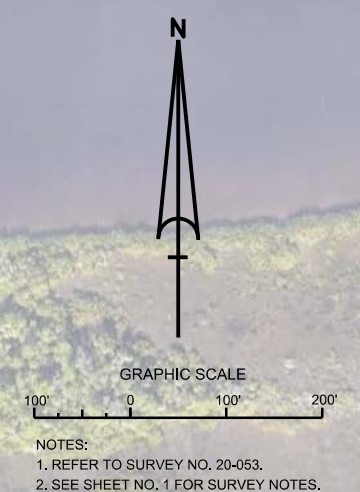


MAP LABEL	AIDS TO NAVIGATION	PLANE COORDINATES		LATITUDE	LONGITUDE
		X	Y		
G*7	DBN-7 (12/19)	495.847	1160.101	27°31'27.64"	82°29'40.78"
R*8	DBN-8 (12/19)	495.542	1160.820	27°31'24.84"	82°29'44.16"
G*9	DBN-9 (12/19)	496.922	1160.109	27°31'27.77"	82°29'28.85"
R*10	DBN-10 (12/19)	496.868	1159.917	27°31'25.86"	82°29'28.45"
G*11	DBN-11 (12/19)	497.596	1160.569	27°31'32.34"	82°29'21.39"
R*12	DBN-12 (12/19)	497.985	1160.355	27°31'30.23"	82°29'20.39"
R*14	DBN-14 (12/19)	498.889	1160.796	27°31'34.64"	82°29'07.04"

GRAPHIC SCALE
100' 0 100' 200'
NOTES:
1. REFER TO SURVEY NO. 20-053.
2. SEE SHEET NO. 1 FOR SURVEY NOTES.



MAP LABEL	AIDS TO NAVIGATION	PLANE COORDINATES		LATITUDE	LONGITUDE
		X	Y		
G*19	DBN-19 (12/19)	503,443	1,162,199	27°31'48.71"	82°28'16.51"
G*19A	DBN-19A (12/19)	503,744	1,161,760	27°31'44.37"	82°28'13.14"
R*20	DBN-20 (12/19)	503,035	1,161,885	27°31'45.58"	82°28'21.03"
G*21	DBN-21 (12/19)	504,429	1,161,465	27°31'41.48"	82°28'05.53"
R*22	DBN-22 (12/19)	504,432	1,161,290	27°31'39.75"	82°28'05.48"

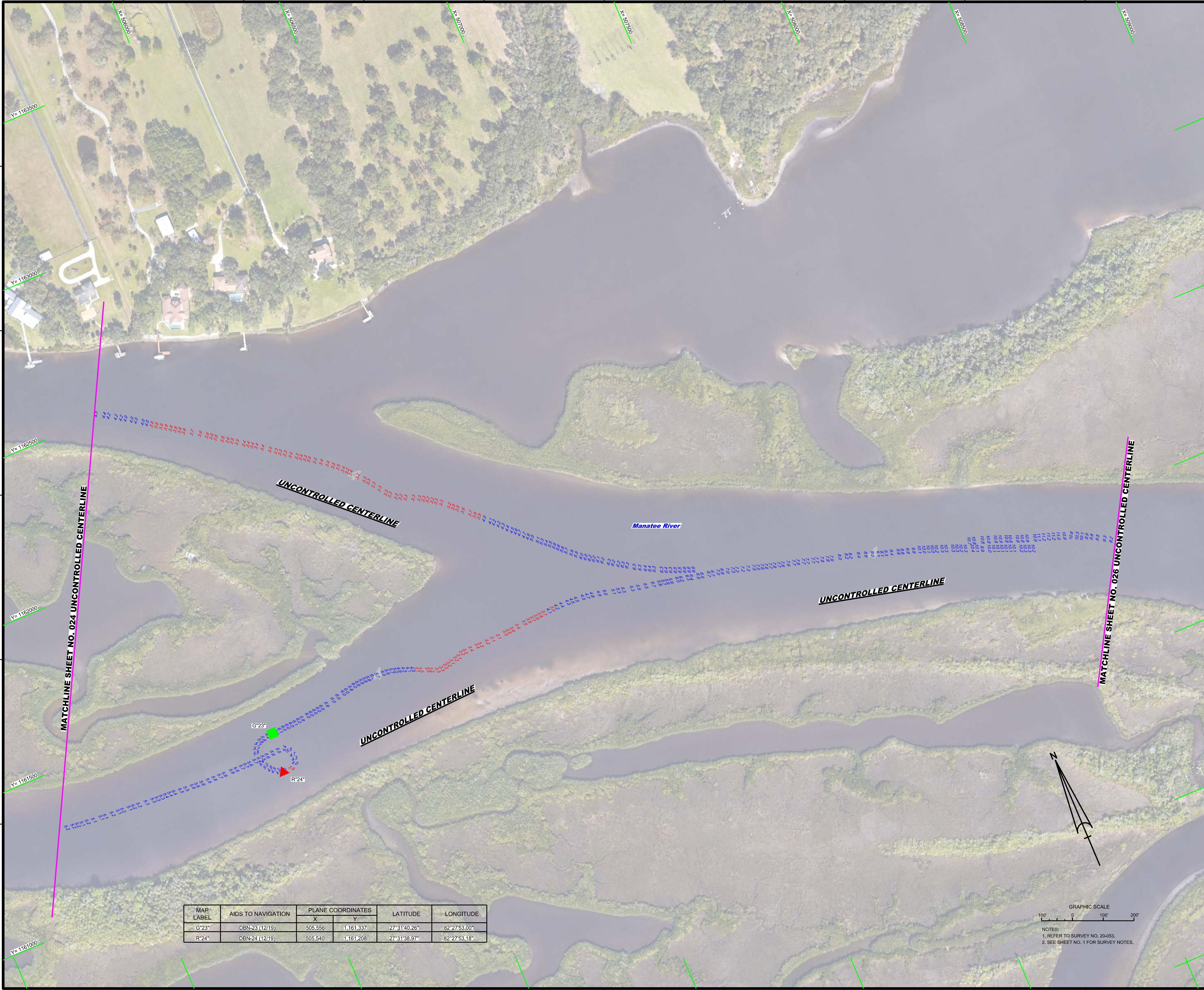


US Army Corps of Engineers
Jacksonville District
SAFETY ON THIS JOB DEPENDS ON YOU

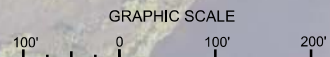
DEPARTMENT OF THE ARMY
JACKSONVILLE DISTRICT, CORPS OF ENGINEERS
JACKSONVILLE, FLORIDA

MANATEE RIVER
MANATEE COUNTY, FLORIDA
**PROJECT CONDITION SURVEY FY20
4, 9 AND 12-FOOT PROJECT**
UNCONTROLLED CENTERLINE
PLAN


Scale: AS SHOWN
Drawing no.
24
SHEET 24 OF 28



MAP LABEL	AIDS TO NAVIGATION	PLANE COORDINATES		LATITUDE	LONGITUDE
		X	Y		
G*23*	DBN-23 (12/19)	505.556	1,161.337	27°31'40.26"	82°27'53.00"
R*24*	DBN-24 (12/19)	505.540	1,161.208	27°31'38.97"	82°27'53.18"

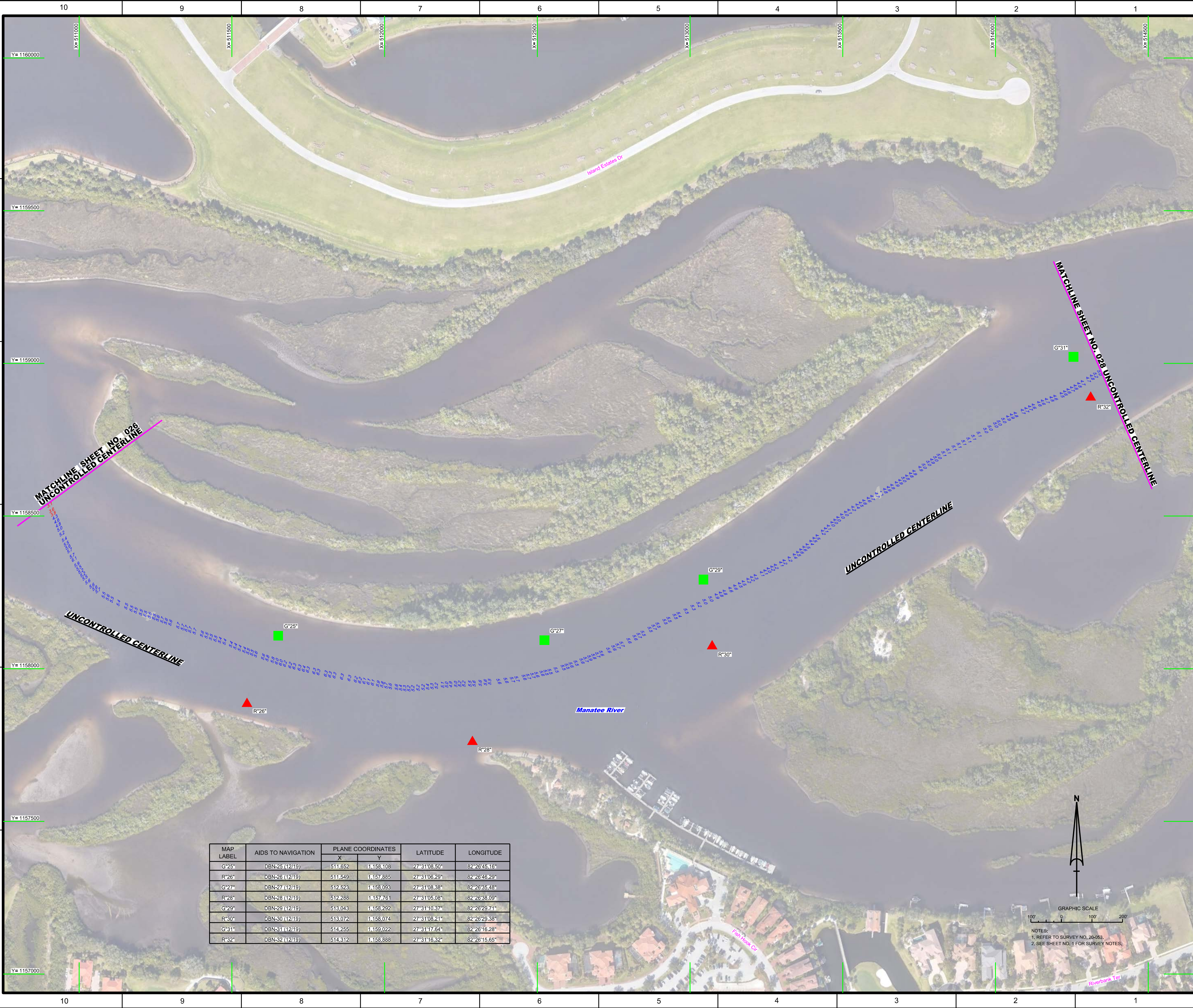


NOTES:
 1. REFER TO SURVEY NO. 20-053.
 2. SEE SHEET NO. 1 FOR SURVEY NOTES.

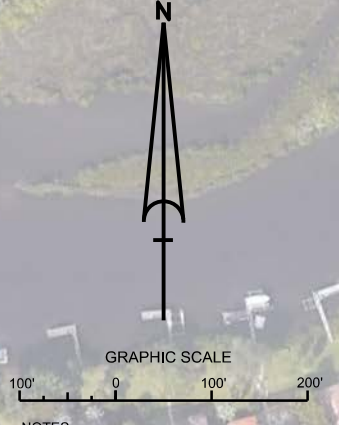


US Army Corps of Engineers
 Jacksonville District
 SAFETY ON THIS JOB DEPENDS ON YOU


Drawn by: WRM Designated by: WRM Check by: GHR Date: JAN 2020	Zone:
DEPARTMENT OF THE ARMY JACKSONVILLE DISTRICT, CORPS OF ENGINEERS JACKSONVILLE, FLORIDA	
PROJECT CONDITION SURVEY FY20 4, 9 AND 12-FOOT PROJECT UNCONTROLLED CENTERLINE PLAN	
Scale: AS SHOWN Drawing no. 25 SHEET 25 OF 28	



MAP LABEL	AIDS TO NAVIGATION	PLANE COORDINATES		LATITUDE	LONGITUDE
		X	Y		
G-25	DBN-25 (12/19)	511,652	1,158,108	27°31'08.50"	82°26'45.16"
R-26	DBN-26 (12/19)	511,649	1,157,885	27°31'06.29"	82°26'46.29"
G-27	DBN-27 (12/19)	512,523	1,158,093	27°31'08.38"	82°26'35.48"
R-28	DBN-28 (12/19)	512,288	1,157,761	27°31'05.08"	82°26'38.09"
G-29	DBN-29 (12/19)	513,043	1,158,292	27°31'10.37"	82°26'29.71"
R-30	DBN-30 (12/19)	513,072	1,158,074	27°31'08.21"	82°26'29.38"
G-31	DBN-31 (12/19)	514,255	1,159,022	27°31'17.64"	82°26'16.28"
R-32	DBN-32 (12/19)	514,312	1,158,888	27°31'16.32"	82°26'15.65"



NOTES:
 1. REFER TO SURVEY NO. 20-053.
 2. SEE SHEET NO. 1 FOR SURVEY NOTES.



US Army Corps of Engineers
 Jacksonville District

SAFETY ON THIS JOB
 DEPENDS ON YOU

DEPARTMENT OF THE ARMY
 JACKSONVILLE DISTRICT, CORPS OF ENGINEERS
 JACKSONVILLE, FLORIDA

Manatee River
 Manatee County, Florida

**PROJECT CONDITION SURVEY FY20
 4, 9 AND 12-FOOT PROJECT**

UNCONTROLLED CENTERLINE
PLAN

Scale: AS SHOWN

Drawing no.
27

SHEET 27 OF 28

