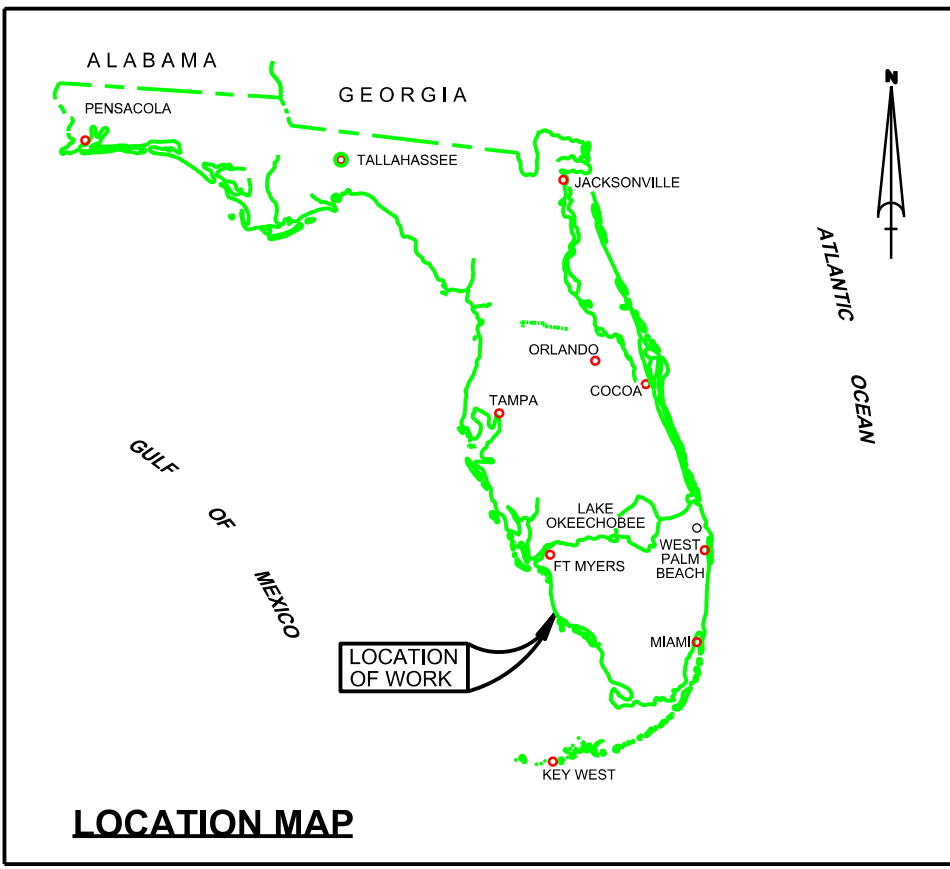


SHEET INDEX

NAPLES TO GORDON PASS COLLIER COUNTY, FLORIDA HYDROGRAPHIC EXAM SURVEY FY20 10 AND 12-FOOT PROJECT



SURVEY NOTES

1. REFER TO SURVEY NO. 20-042.
2. DEPTHS DEPICTED BY THIS SURVEY ARE REFERENCED TO MLLW. TIDAL EPOCH 1983-2001 AS REPORTED BY THE NATIONAL OCEANIC AND ATMOSPHERIC ADMINISTRATION (NOAA). NOAA'S VDATUM MODEL WAS USED AND CALIBRATED TO THE PUBLISHED MLLW HEIGHTS OF THE BENCHMARKS ASSOCIATED WITH THE TIDE GAUGE SITES SPECIFIED BELOW:

NGS BENCHMARK S-717 FOR ALL CUTS (PID: DM5194)
3. TIDAL REDUCTIONS WERE OBTAINED UTILIZING A REAL-TIME KINEMATIC (RTK) GPS AND REFERENCED TO MLLW UTILIZING A HYPACK KINEMATIC TIDE DATUM (KTD) MODEL. KTD FILE NAME IS: "BROWARD-MIAMIDADE-MONROE-COLLIER_2018 05 02.KTD".
4. ALL ELEVATIONS ARE BELOW THE CHART DATUM UNLESS PRECEDED BY A (+) SIGN.
5. PLANE COORDINATES ARE BASED ON THE TRANSVERSE MERCATOR PROJECTION FOR THE EAST ZONE (0901) OF FLORIDA AND REFERENCED TO NORTH AMERICAN DATUM OF 1983 (NAD83).
6. ALL STATIONING REFERS TO THE CENTERLINE OF THE CHANNEL.

REFERENCE BASE LOCATED AT "S-717" (PID: DM5194)
7. THIS SURVEY WAS PERFORMED USING REAL-TIME KINEMATIC (RTK) GPS POSITIONING WITH THE FOLLOWING REFERENCE BASE LOCATION:

REFERENCE BASE LOCATED AT "S-717" (PID: DM5194)
8. VERTICAL MEASUREMENTS WERE MADE USING A R2SONIC 2024 MBES OPERATING AT 240 KHZ. SOUNDINGS ARE SHOWN IN HIGH FREQUENCY.
9. AIDS TO NAVIGATION WERE LOCATED DURING THIS SURVEY.
10. THE INFORMATION DEPICTED ON THIS MAP REPRESENTS THE RESULTS OF SURVEYS MADE ON THE DATES INDICATED ABOVE AND CAN ONLY BE CONSIDERED AS INDICATING THE GENERAL CONDITIONS AT THAT TIME. THIS CHART IS SOLELY FOR THE DISTRIBUTION OF AVAILABLE DEPTHS AT THE TIME OF THE SURVEY.
11. SURVEY ACCURACY PERFORMANCE STANDARDS, QUALITY CONTROL, AND QUALITY ASSURANCE REQUIREMENTS WERE FOLLOWED DURING THIS SURVEY IN ACCORDANCE WITH USACE EM 1110-2-1003, HYDROGRAPHIC SURVEYING, 30 NOV 2013.

LEGEND	
	MONUMENT
	LIGHTED BEACON
	GREEN DAY BEACON
	RED DAY BEACON
	RED LIGHTED BUOY
	GREEN LIGHTED BUOY
	CAN BUOY
	NUN BUOY
	TIDE STAFF
	PROJECT DEPTH

US Army Corps of Engineers
 Jacksonville District
SAFETY ON THIS JOB DEPENDS ON YOU
 Date: _____
 No. _____
 Zone _____
 Description: _____

DEPARTMENT OF THE ARMY
JACKSONVILLE DISTRICT, CORPS OF ENGINEERS
JACKSONVILLE, FLORIDA

Checked By: GHR
 Drawn By: WRM
 File No: W82258-20-042
 Date: NOV 2019

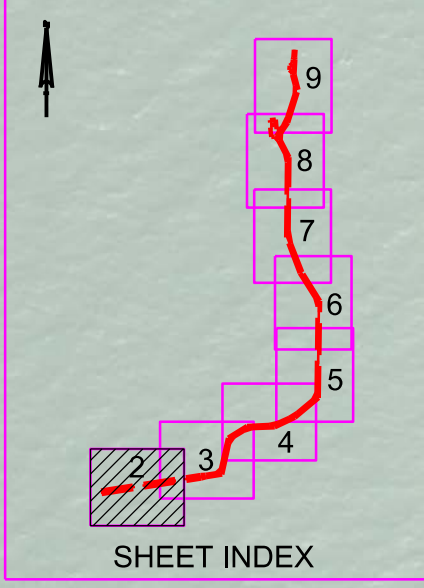
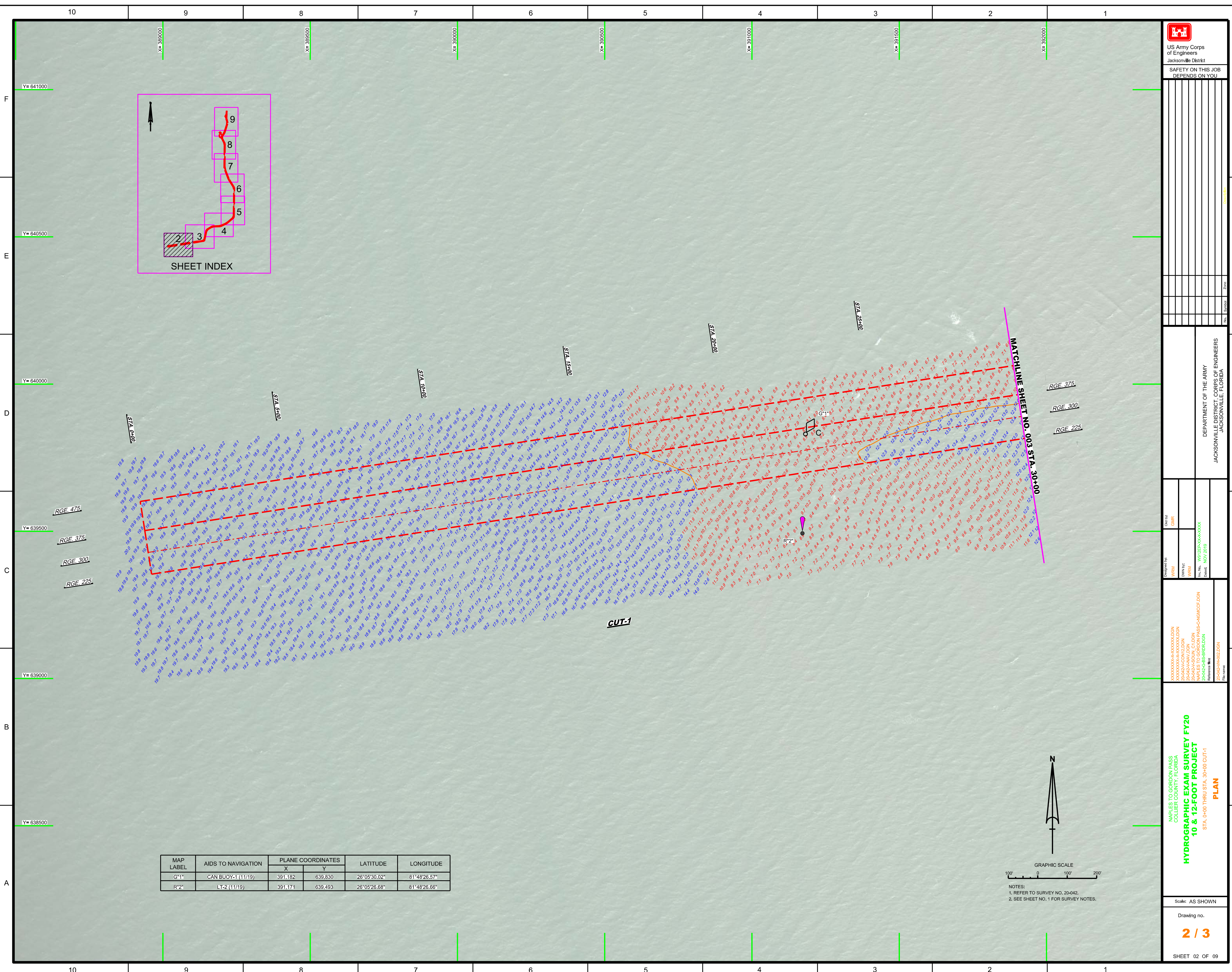
XXXXXXXXXXXXXXXXXXXX.DGN
 XXXXXXXXXXXXXXXXXXXX.DGN
 XXXXXXXXXXXXXXXXXXXX.DGN
 XXXXXXXXXXXXXXXXXXXX.DGN
 NAPLES TO GORDON PASS-20-042.DGN
 20-042-10-12-FOOT-PROJECT-INDEX-LOCATION-AND-VICINITY MAP
 Reference File: 20-042-10-12-FOOT-PROJECT-INDEX-LOCATION-AND-VICINITY MAP

Scale: AS SHOWN

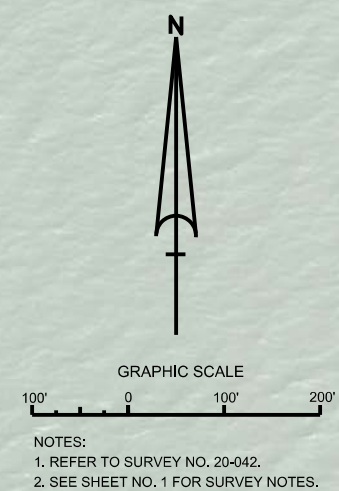
Drawing no.

1 / 3

SHEET 01 OF 09



MAP LABEL	AIDS TO NAVIGATION	PLANE COORDINATES		LATITUDE	LONGITUDE
		X	Y		
G*1	CAN BUOY-1 (11/19)	391,182	639,830	26°05'30.02"	81°48'26.57"
R*2	LT-2 (11/19)	391,171	639,493	26°05'26.66"	81°48'26.66"



US Army Corps of Engineers
Jacksonville District

SAFETY ON THIS JOB
DEPENDS ON YOU

DEPARTMENT OF THE ARMY
JACKSONVILLE DISTRICT, CORPS OF ENGINEERS
JACKSONVILLE, FLORIDA

Maple to Gordon Pass
Collier County, Florida

**HYDROGRAPHIC EXAM SURVEY FY20
10 & 12-FOOT PROJECT**

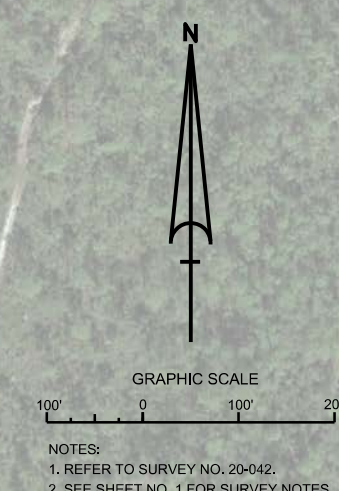
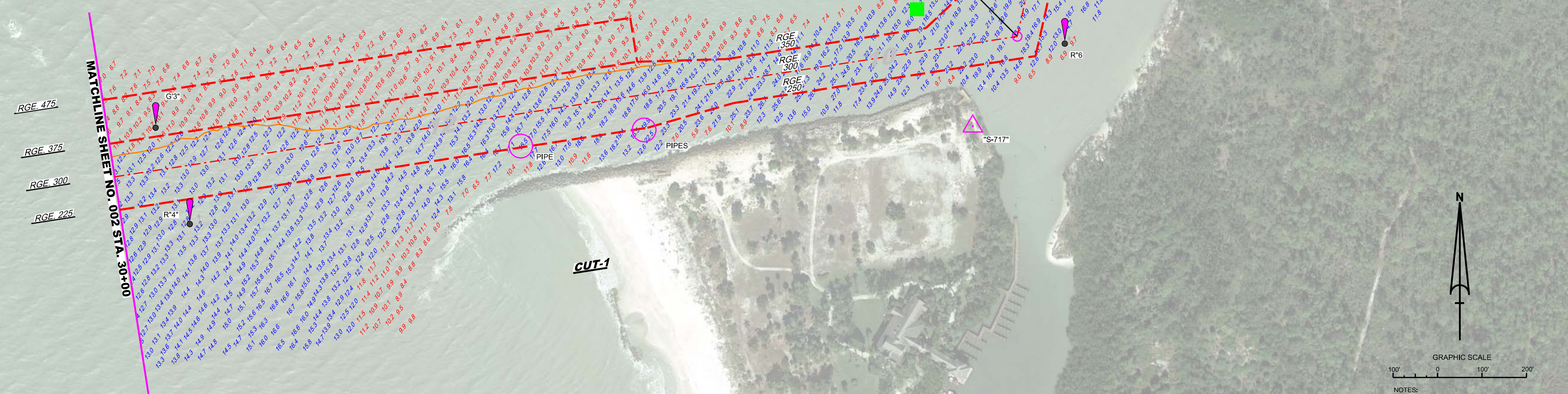
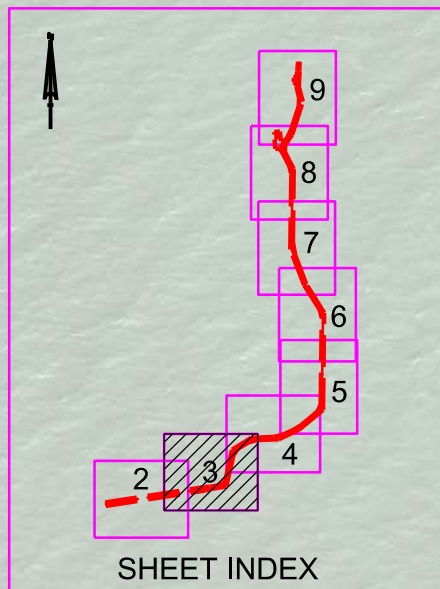
STA. 0+00 THRU STA. 30+00 CUT-1
PLAN


Scale: AS SHOWN

Drawing no.
2 / 3

SHEET 02 OF 09

MAP LABEL	AIDS TO NAVIGATION	PLANE COORDINATES		LATITUDE	LONGITUDE
		X	Y		
G*3"	LT-3 (11/19)	392,007	640,000	26°05'31.75"	81°48'17.54"
R*4"	LT-4 (11/19)	392,083	639,784	26°05'29.61"	81°48'16.68"
G*5"	DBN-5 (11/19)	393,718	640,267	26°05'34.50"	81°47'58.79"
R*6"	LT-6 (11/19)	394,049	640,190	26°05'33.75"	81°47'55.14"
G*7"	DBN-7 (11/19)	393,863	640,352	26°05'35.34"	81°47'57.20"
R*8"	DBN-8 (11/19)	394,289	641,246	26°05'44.23"	81°47'52.59"
G*9"	LT-9 (11/19)	394,149	641,640	26°05'48.12"	81°47'54.15"
R*10"	DBN-10 (11/19)	394,475	641,638	26°05'48.12"	81°47'50.57"
WEATHER STATION	WEATHER STATION (11/19)	394,212	640,346	26°05'35.31"	81°47'53.37"
NOWKE	SIGN (11/19)	393,920	640,557	26°05'37.38"	81°47'56.59"
PIPE	PIPE (11/19)	382,827	639,959	26°05'31.40"	81°48'08.53"
PIPES	PIPES (11/19)	393,104	639,995	26°05'31.77"	81°48'05.50"





US Army Corps of Engineers
Jacksonville District

SAFETY ON THIS JOB
DEPENDS ON YOU

DEPARTMENT OF THE ARMY
JACKSONVILLE DISTRICT, CORPS OF ENGINEERS
JACKSONVILLE, FLORIDA

Called by: GHR
Designed by: WRM
Drawn by: WRM
Checked by: WRM
Date: NOV 2019

20-042-CON-10-00N
20-042-CON-10-00D
20-042-CON-10-00E
20-042-CON-10-00W
20-042-CON-10-00S
20-042-CON-10-00T
20-042-CON-10-00U
20-042-CON-10-00V
20-042-CON-10-00X
20-042-CON-10-00Y
20-042-CON-10-00Z

HYDROGRAPHIC EXAM SURVEY FY20
NAPLES TO GORCON PASS
COLLIER COUNTY, FLORIDA

10 & 12-FOOT PROJECT
STA. 30+00 CUT-3 THRU STA. 3+00 CUT-3

Scale: AS SHOWN

Drawing no.
3 / 3

SHEET 03 OF 09