

EVERGLADES HARBOR COLLIER COUNTY, FLORIDA PROJECT CONDITION SURVEY FY20 8-FOOT PROJECT

SURVEY NOTES

- REFER TO SURVEY NO. 20-040.
- SOUNDINGS ARE IN FEET AND TENTHS AND REFER TO NOAA'S REPORTED MEAN LOWER LOW WATER (MLLW) OF THE 1983-2001 TIDAL EPOCH.
- TIDAL REDUCTIONS WERE OBTAINED UTILIZING A REAL-TIME KINEMATIC (RTK) GPS AND REFERENCED TO MLLW UTILIZING A HYPACK KINEMATIC TIDE DATUM (KTD) MODEL. KTD FILE NAME IS: "BROWARD-MIAMIDADE-MONROE-COLLIER_2018 05 02.KTD"
- ALL ELEVATIONS ARE BELOW THE CHART DATUM UNLESS PRECEDED BY A (+) SIGN.
- PLANE COORDINATES ARE BASED ON THE TRANSVERSE MERCATOR PROJECTION FOR THE EAST ZONE OF FLORIDA AND REFERENCED TO NORTH AMERICAN DATUM OF 1983 (NAD83).
- ALL STATIONING REFERS TO THE CENTERLINE OF THE CHANNEL.
- THIS SURVEY WAS PERFORMED USING REAL-TIME KINEMATIC (RTK) GPS POSITIONING WITH THE FOLLOWING REFERENCE BASE LOCATION:
REFERENCE BASE LOCATED AT "872 4948 TIDAL 5" (PID: AC0633)
- DEPTHS DEPICTED BY THIS SURVEY ARE REFERENCED TO MLLW, TIDAL EPOCH 1983-2001 AS REPORTED BY THE NATIONAL OCEANIC AND ATMOSPHERIC ADMINISTRATION (NOAA). NOAA'S DATUM MODEL WAS USED AND CALIBRATED TO THE PUBLISHED MLLW HEIGHTS OF THE BENCHMARKS ASSOCIATED WITH THE TIDE GAUGE SITES SPECIFIED BELOW:
NOAA TIDAL STATION 872-4948 FOR ENTIRE PROJECT.
- VERTICAL MEASUREMENTS WERE MADE USING A ROSS 835 SMARTSOUNDER DUAL-FREQUENCY 28/200 KHZ SINGLE-BEAM TRANSDUCER AND AN EDGE-TECH 6205 COMBINED MULTI-BEAM / SIDESCAN. ALL SOUNDINGS SHOWN ARE IN HIGH FREQUENCY.
- VESEL: SB-48 DATE OF SURVEY: 13 MAY 2020 CUT: INDIAN KEY TO SR-29 BRIDGE
- AIDS TO NAVIGATION WERE LOCATED DURING THIS SURVEY.
- THE INFORMATION DEPICTED ON THIS MAP REPRESENTS THE RESULTS OF SURVEYS MADE ON THE DATES INDICATED ABOVE AND CAN ONLY BE CONSIDERED AS INDICATING THE GENERAL CONDITIONS AT THAT TIME. THIS CHART IS SOLELY FOR THE DISTRIBUTION OF AVAILABLE DEPTHS AT THE TIME OF THE SURVEY.
- SURVEY ACCURACY PERFORMANCE STANDARDS, QUALITY CONTROL, AND QUALITY ASSURANCE REQUIREMENTS WERE FOLLOWED DURING THIS SURVEY IN ACCORDANCE WITH USACE EM 1110-2-1003, HYDROGRAPHIC SURVEYING, 30 NOV 2013.

| LEGEND | |
|--------|--------------------|
| | MONUMENT |
| | LIGHTED BEACON |
| | GREEN DAYBEACON |
| | RED DAYBEACON |
| | RED LIGHTED BUOY |
| | GREEN LIGHTED BUOY |
| | CAN BUOY |
| | NUN BUOY |
| | TIDE STAFF |
| | PROJECT DEPTH |

US Army Corps of Engineers
Jacksonville District

SAFETY ON THIS JOB
DEPENDS ON YOU

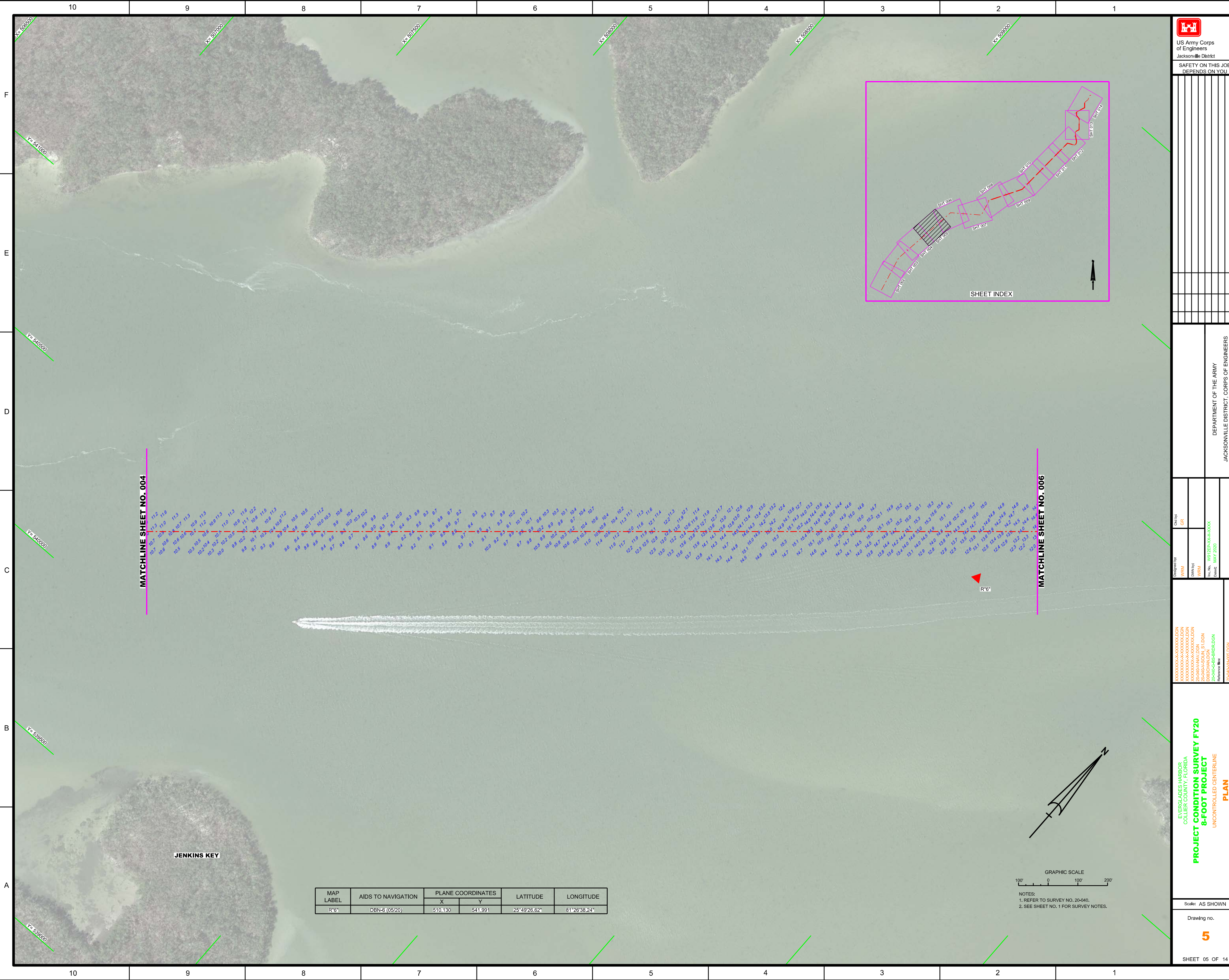
DEPARTMENT OF THE ARMY
JACKSONVILLE DISTRICT, CORPS OF ENGINEERS
JACKSONVILLE, FLORIDA

EVERGLADES HARBOR
COLLIER COUNTY, FLORIDA
**PROJECT CONDITION SURVEY FY20
8-FOOT PROJECT**
INDEX, LOCATION AND VICINITY
MAP

Scale: AS SHOWN

Drawing no.
1

SHEET 01 OF 14

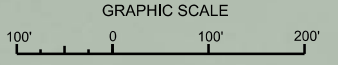


MATCHLINE SHEET NO. 004


MATCHLINE SHEET NO. 006

JENKINS KEY

| MAP LABEL | AIDS TO NAVIGATION | PLANE COORDINATES | | LATITUDE | LONGITUDE |
|-----------|--------------------|-------------------|---------|--------------|--------------|
| | | X | Y | | |
| R'6" | DBN-6 (05/20) | 510.130 | 541.991 | 25°49'26.62" | 81°26'38.24" |



NOTES:
 1. REFER TO SURVEY NO. 20-040.
 2. SEE SHEET NO. 1 FOR SURVEY NOTES.



US Army Corps of Engineers
Jacksonville District

SAFETY ON THIS JOB
DEPENDS ON YOU

DESIGNED BY: WRM
 DRAWN BY: WRM
 CHECKED BY: WRM
 DATE: MAY 2020

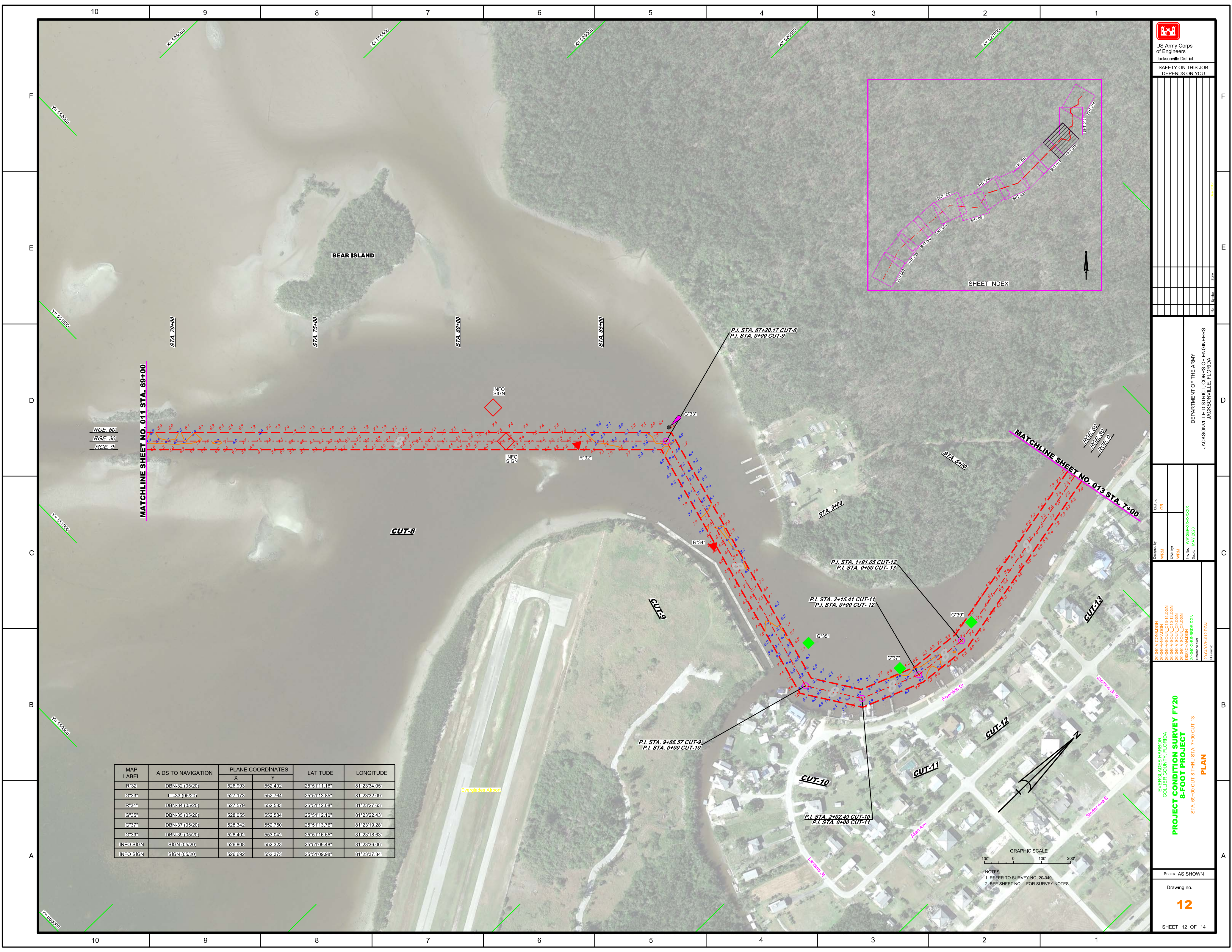
Scale: AS SHOWN

Drawing no.
5

SHEET 05 OF 14

EVERGLADES HARBOR
 COLLIER COUNTY, FLORIDA
PROJECT CONDITION SURVEY FY20
8-FOOT PROJECT
 UNCONTROLLED CENTERLINE
PLAN

DEPARTMENT OF THE ARMY
 JACKSONVILLE DISTRICT, CORPS OF ENGINEERS
 JACKSONVILLE, FLORIDA



| MAP LABEL | AIDS TO NAVIGATION | PLANE COORDINATES | | LATITUDE | LONGITUDE |
|-----------|--------------------|-------------------|---------|--------------|--------------|
| | | X | Y | | |
| R*32 | DBN-32 (05/20) | 528,993 | 552,492 | 25°51'11.16" | 81°23'34.05" |
| G*33 | LT-33 (05/20) | 527,478 | 552,764 | 25°51'18.85" | 81°23'32.09" |
| R*34 | DBN-34 (05/20) | 527,579 | 552,583 | 25°51'12.08" | 81°23'27.63" |
| G*35 | DBN-35 (05/20) | 528,055 | 552,584 | 25°51'12.10" | 81°23'22.43" |
| G*37 | DBN-37 (05/20) | 528,342 | 552,750 | 25°51'18.76" | 81°23'19.28" |
| G*39 | DBN-39 (05/20) | 528,402 | 553,042 | 25°51'16.65" | 81°23'18.63" |
| INFO SIGN | SIGN (05/20) | 528,808 | 552,828 | 25°51'09.48" | 81°23'36.06" |
| INFO SIGN | SIGN (05/20) | 528,692 | 552,878 | 25°51'09.98" | 81°23'37.34" |



NOTES:
 1. REFER TO SURVEY NO. 20-040.
 2. SEE SHEET NO. 1 FOR SURVEY NOTES.

US Army Corps of Engineers
 Jacksonville District

SAFETY ON THIS JOB
 DEPENDS ON YOU

DEPARTMENT OF THE ARMY
 JACKSONVILLE DISTRICT, CORPS OF ENGINEERS
 JACKSONVILLE, FLORIDA

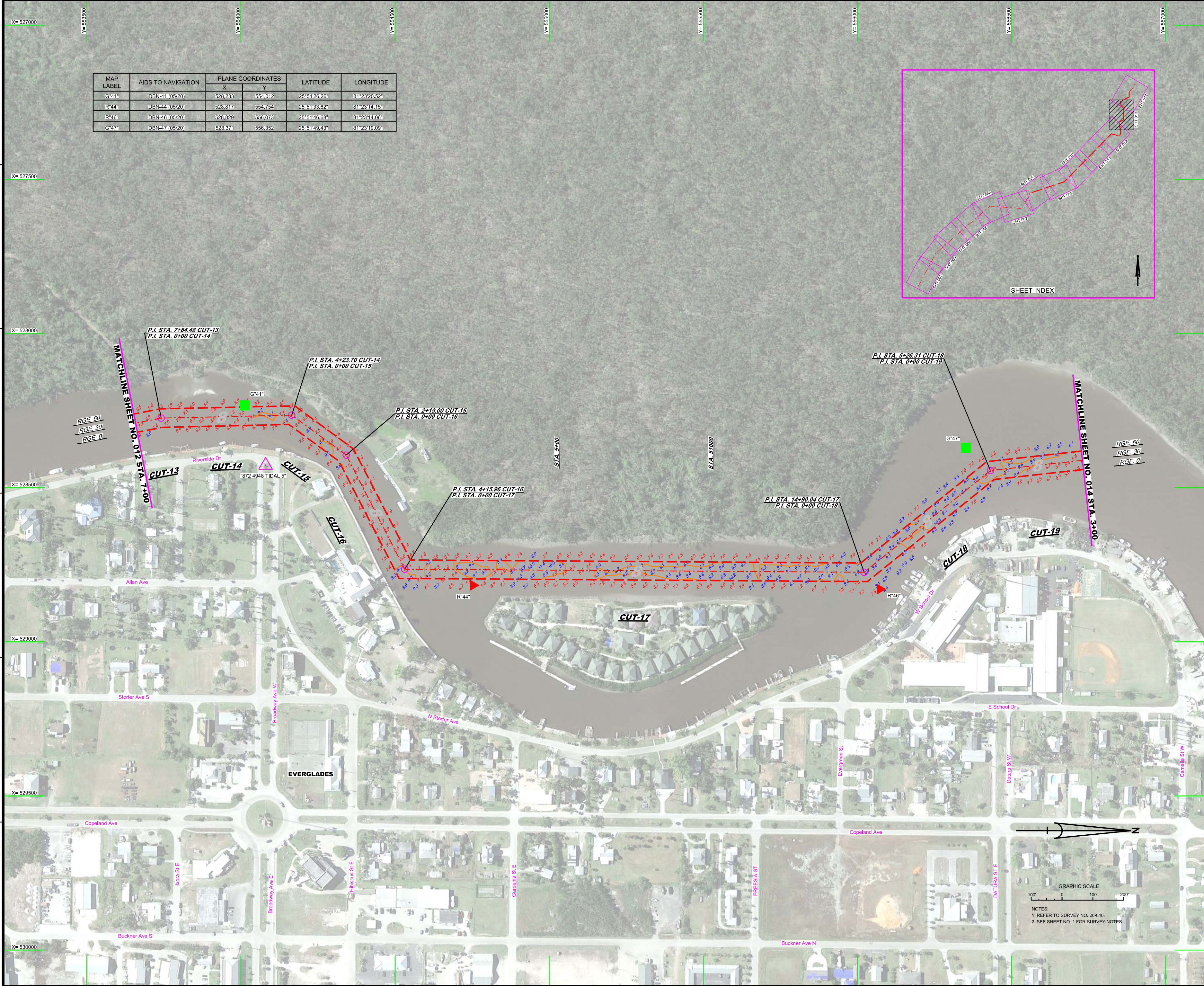
PROJECT CONDITION SURVEY FY20
 8-FOOT PROJECT
 STA. 69+00 CUT-8 THRU STA. 7+00 CUT-13
PLAN

Scale: AS SHOWN

Drawing no.
12

SHEET 12 OF 14

| MAP LABEL | AIDS TO NAVIGATION | PLANE COORDINATES | | LATITUDE | LONGITUDE |
|-----------|--------------------|-------------------|---------|--------------|--------------|
| | | X | Y | | |
| G*41* | DBN-41 (05/20) | 528,233 | 554,012 | 25°51'26.26" | 81°23'20.52" |
| R*44* | DBN-44 (05/20) | 528,817 | 554,754 | 25°51'33.62" | 81°23'14.15" |
| R*46* | DBN-46 (05/20) | 528,829 | 556,073 | 25°51'46.68" | 81°23'14.06" |
| G*47* | DBN-47 (05/20) | 528,371 | 556,352 | 25°51'49.43" | 81°23'19.09" |



GRAPHIC SCALE
0 100 200
NOTES:
1. REFER TO SURVEY NO. 20-040.
2. SEE SHEET NO. 1 FOR SURVEY NOTES.

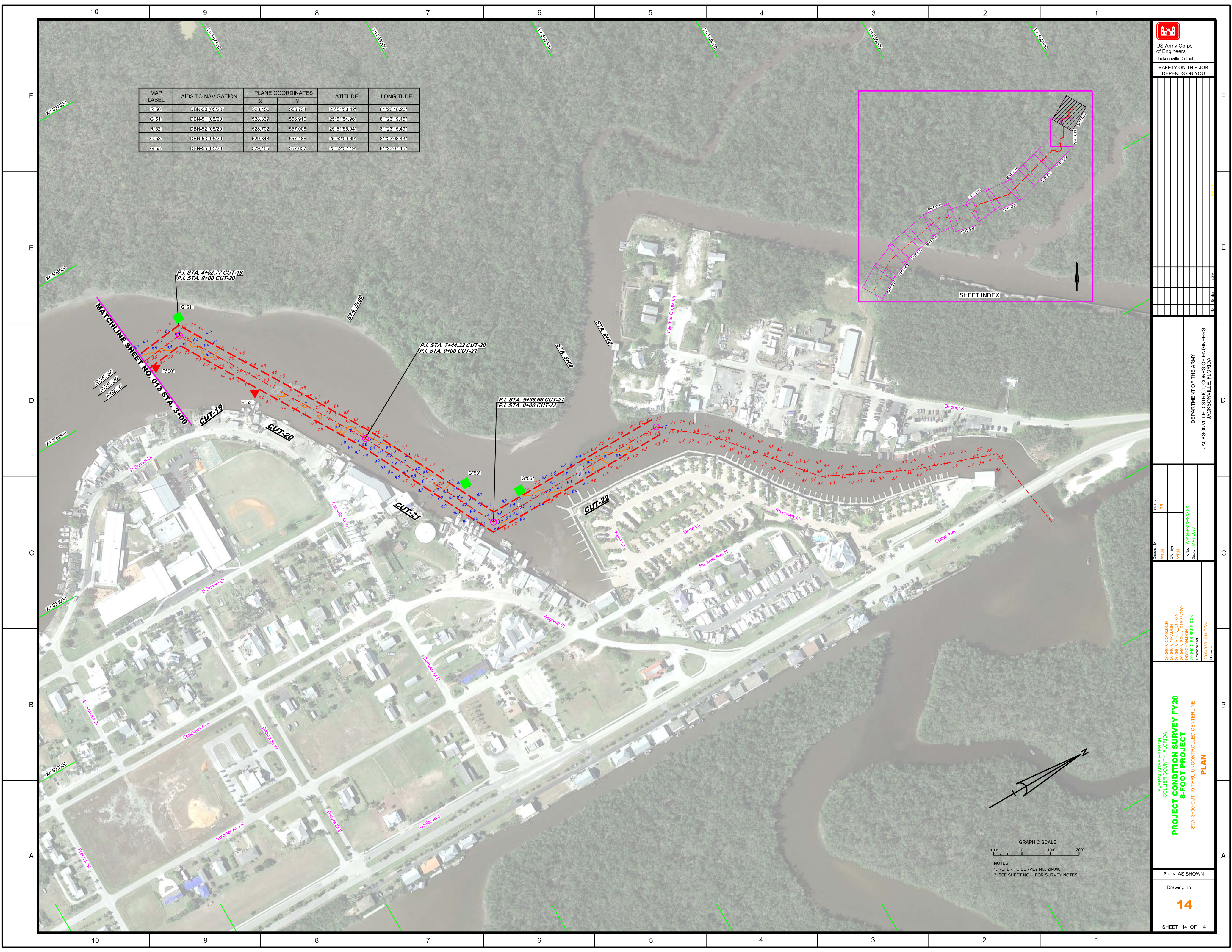
| MAP LABEL | AIDS TO NAVIGATION | PLANE COORDINATES | | LATITUDE | LONGITUDE |
|-----------|--------------------|-------------------|---------|--------------|--------------|
| | | X | Y | | |
| R*50* | DBN-50 (05/20) | 528,450 | 556,754 | 25°51'53.42" | 81°23'18.23" |
| G*51* | DBN-51 (05/20) | 528,339 | 556,910 | 25°51'54.86" | 81°23'19.45" |
| R*52* | DBN-52 (05/20) | 528,702 | 557,008 | 25°51'55.94" | 81°23'16.49" |
| G*53* | DBN-53 (05/20) | 529,348 | 557,486 | 25°52'00.69" | 81°23'08.43" |
| G*55* | DBN-55 (05/20) | 529,465 | 557,637 | 25°52'02.19" | 81°23'07.45" |

SAFETY ON THIS JOB
DEPENDS ON YOU

DEPARTMENT OF THE ARMY
JACKSONVILLE DISTRICT, CORPS OF ENGINEERS
JACKSONVILLE, FLORIDA

Designed By: WRM
Checked By: GRL
Drawn By: WRM
Project No.: W81255-NA-09-0004
Date: MAY 2020

PROJECT CONDITION SURVEY FY20
8-FOOT PROJECT
PLAN
STA 3+00 CUT-19 THRU UNCONTROLLED CENTERLINE



GRAPHIC SCALE
100 0 100 200

NOTES:
1. REFER TO SURVEY NO. 20-040.
2. SEE SHEET NO. 1 FOR SURVEY NOTES.