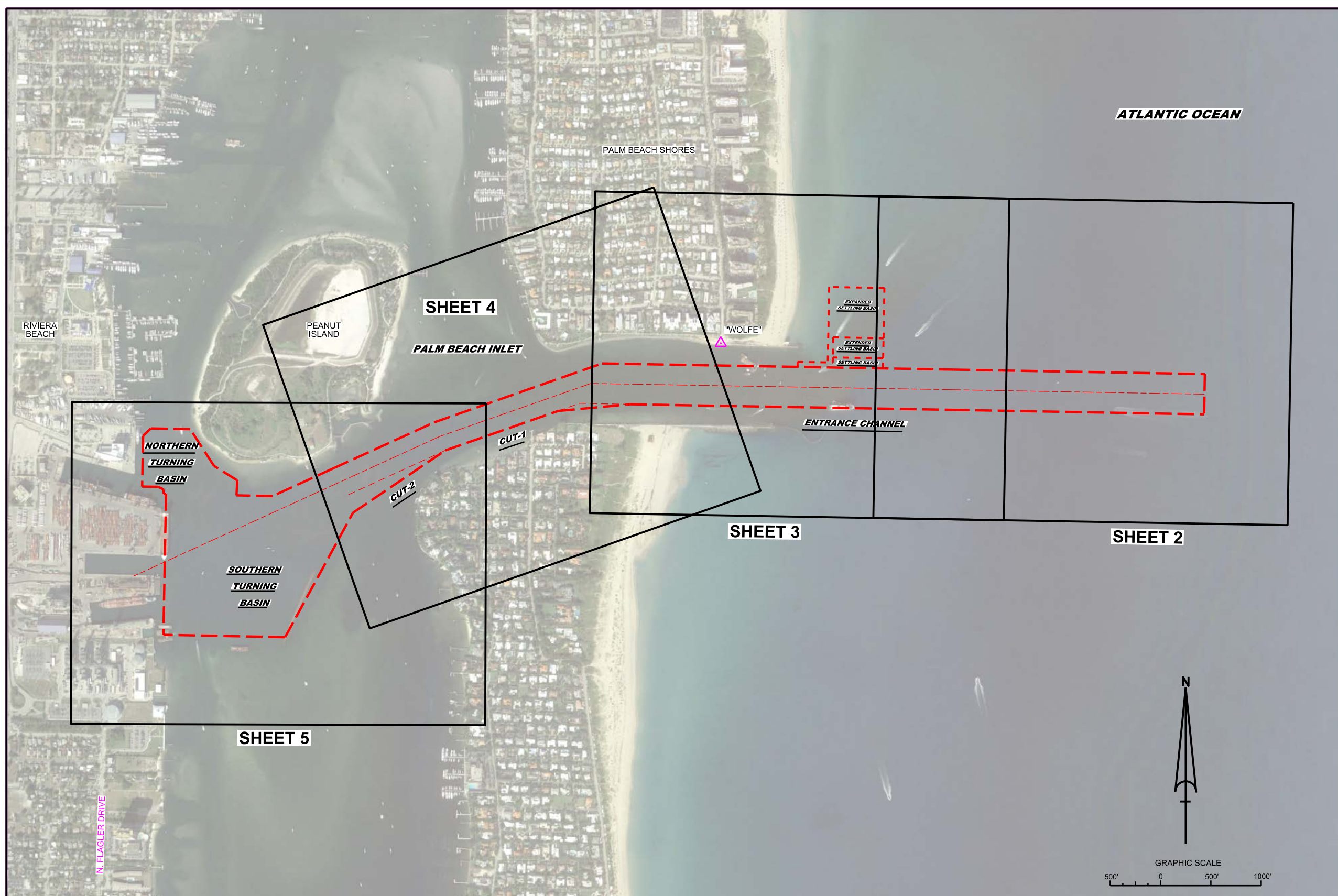


# PALM BEACH HARBOR, FLORIDA 1Q EXAMINATION SURVEY FY20 25, 33, 35, 37 & 39-FOOT PROJECT



**SURVEY NOTES**

- REFER TO SURVEY NO. 20-011. DATA FROM EMERGENCY AFTER-DREDGE SURVEY 20-003 ALSO USED.
- SOUNDINGS ARE IN FEET AND TENTHS AND REFER TO NOAA'S REPORTED MEAN LOWER LOW WATER (MLLW) OF THE 1983-2001 TIDAL EPOCH.
- TIDAL REDUCTIONS WERE OBTAINED UTILIZING A REAL-TIME KINEMATIC (RTK) GPS AND REFERENCED TO MLLW UTILIZING A HYPACK KINEMATIC TIDE DATUM (KTD) MODEL. KTD FILE NAME IS: "PALMBEACH\_2018\_05\_03.KTD".
- ALL ELEVATIONS ARE BELOW THE CHART DATUM UNLESS PRECEDED BY A (+) SIGN.
- PLANE COORDINATES ARE BASED ON THE TRANSVERSE MERCATOR PROJECTION FOR THE EAST ZONE OF FLORIDA AND REFERENCED TO NORTH AMERICAN DATUM OF 1983 (NAD83).
- ALL STATIONING REFERS TO THE CENTERLINE OF THE CHANNEL.
- THIS SURVEY WAS PERFORMED USING REAL-TIME KINEMATIC (RTK) GPS POSITIONING WITH THE FOLLOWING REFERENCE BASE LOCATION:  
REFERENCE BASE LOCATED AT "WOLFE" (OPUS PID: BBBZ46)  
TIDE STAFF LOCATED FROM "COE A 310 RESET" (PID: BBN25)
- DEPTHS DEPICTED BY THIS SURVEY ARE REFERENCED TO MLLW, TIDAL EPOCH 1983-2001 AS REPORTED BY THE NATIONAL OCEANIC AND ATMOSPHERIC ADMINISTRATION (NOAA). A MODIFIED VERSION OF NOAA'S VDATUM MODEL WAS USED TO CALIBRATE TO THE PUBLISHED MLLW HEIGHTS OF THE BENCHMARKS ASSOCIATED BELOW:  
NOAA TIDAL STATION 872-2588, PORT OF W. PALM BEACH, LAKE WORTH (PID: BBN25)  
VERTICAL MEASUREMENTS WERE MADE USING AN EDGETECH 6205 COMBINED MULTI-BEAM AND SIDESCAN SYSTEM. ALL SOUNDINGS SHOWN ARE IN HIGH FREQUENCY.
- AIDS TO NAVIGATION WERE LOCATED DURING THIS SURVEY.
- THE INFORMATION DEPICTED ON THIS MAP REPRESENTS THE RESULTS OF SURVEYS MADE ON THE DATES INDICATED ABOVE AND CAN ONLY BE CONSIDERED AS INDICATING THE GENERAL CONDITIONS AT THAT TIME. THIS CHART IS SOLELY FOR THE DISTRIBUTION OF AVAILABLE DEPTHS AT THE TIME OF THE SURVEY.
- SURVEY ACCURACY PERFORMANCE STANDARDS, QUALITY CONTROL, AND QUALITY ASSURANCE REQUIREMENTS WERE FOLLOWED DURING THIS SURVEY IN ACCORDANCE WITH USACE EM 1110-2-1003, HYDROGRAPHIC SURVEYING, 30 NOV 2013.

US Army Corps of Engineers  
Jacksonville District

SAFETY ON THIS JOB  
DEPENDS ON YOU

DEPARTMENT OF THE ARMY  
JACKSONVILLE DISTRICT, CORPS OF ENGINEERS  
JACKSONVILLE, FLORIDA

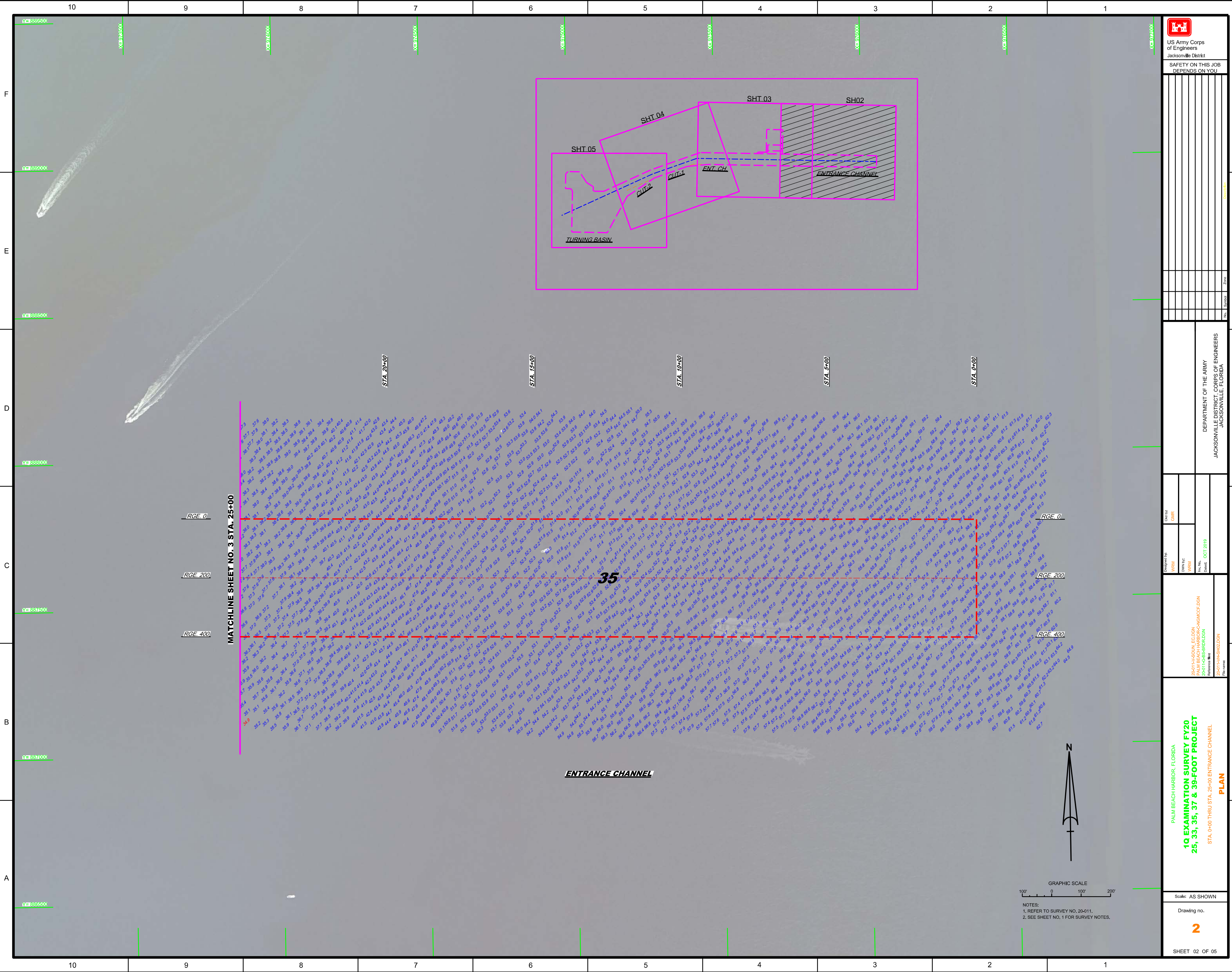
DESIGNED BY: WRM  
DRAWN BY: WRM  
CHECKED BY: WRM  
DATE: OCT 2019

PROJECT: PALM BEACH HARBOR, FLORIDA  
1Q EXAMINATION SURVEY FY20  
25, 33, 35, 37 & 39-FOOT PROJECT  
INDEX, LOCATION AND VICINITY  
MAP

Scale: AS SHOWN

Drawing no. 1

SHEET 01 OF 05




  
 US Army Corps of Engineers  
 Jacksonville District  
 SAFETY ON THIS JOB  
 DEPENDS ON YOU

DEPARTMENT OF THE ARMY  
 JACKSONVILLE DISTRICT, CORPS OF ENGINEERS  
 JACKSONVILLE, FLORIDA

10 EXAMINATION SURVEY FY20  
 25, 33, 35, 37 & 39-FOOT PROJECT  
 STA. 0+00 THRU STA. 25+00 ENTRANCE CHANNEL  
 PLAN

SHEET 02 OF 05

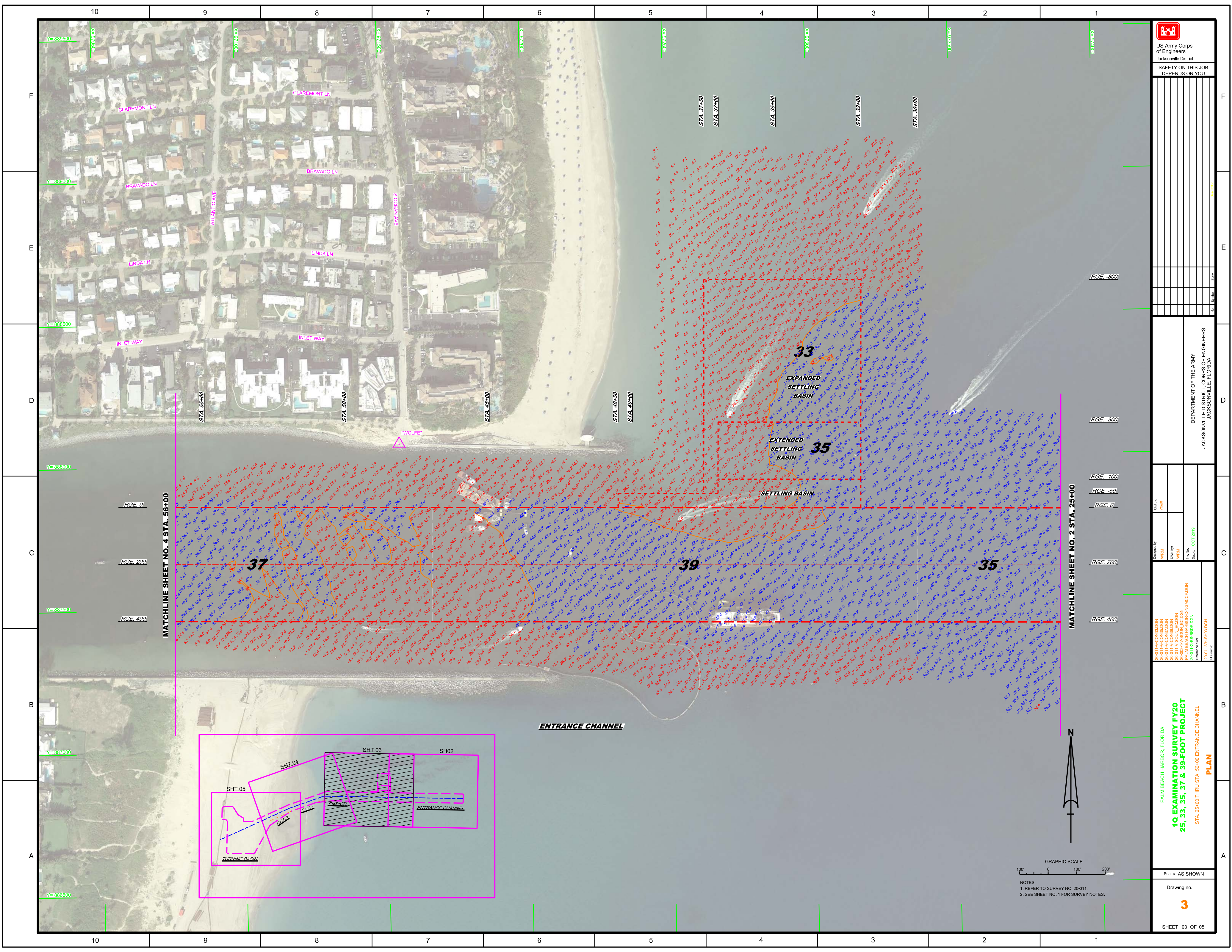
MATCHLINE SHEET NO. 3 STA. 25+00

ENTRANCE CHANNEL



NOTES:  
 1. REFER TO SURVEY NO. 20-011.  
 2. SEE SHEET NO. 1 FOR SURVEY NOTES.

Prepared by: WRM  
 Checked by: GHR  
 Date: OCT 2019



MATCHLINE SHEET NO. 4 STA. 56+00

MATCHLINE SHEET NO. 2 STA. 25+00



NOTES:  
1. REFER TO SURVEY NO. 20-011.  
2. SEE SHEET NO. 1 FOR SURVEY NOTES.

MAP LABEL	AIDS TO NAVIGATION	PLANE COORDINATES		LATITUDE	LONGITUDE
		X	Y		
G*7	LT. BUOY-7 (10/19)	969,952	887,346	26°46'17.88"	80°02'17.90"
R*8	LT-8 (10/19)	969,306	887,585	26°46'20.29"	80°02'25.00"
G*9	LT-9 (10/19)	968,808	886,902	26°46'13.56"	80°02'30.56"
R*10	LT-10 (10/19)	968,203	887,158	26°46'16.14"	80°02'37.21"

US Army Corps of Engineers  
Jacksonville District  
SAFETY ON THIS JOB  
DEPENDS ON YOU

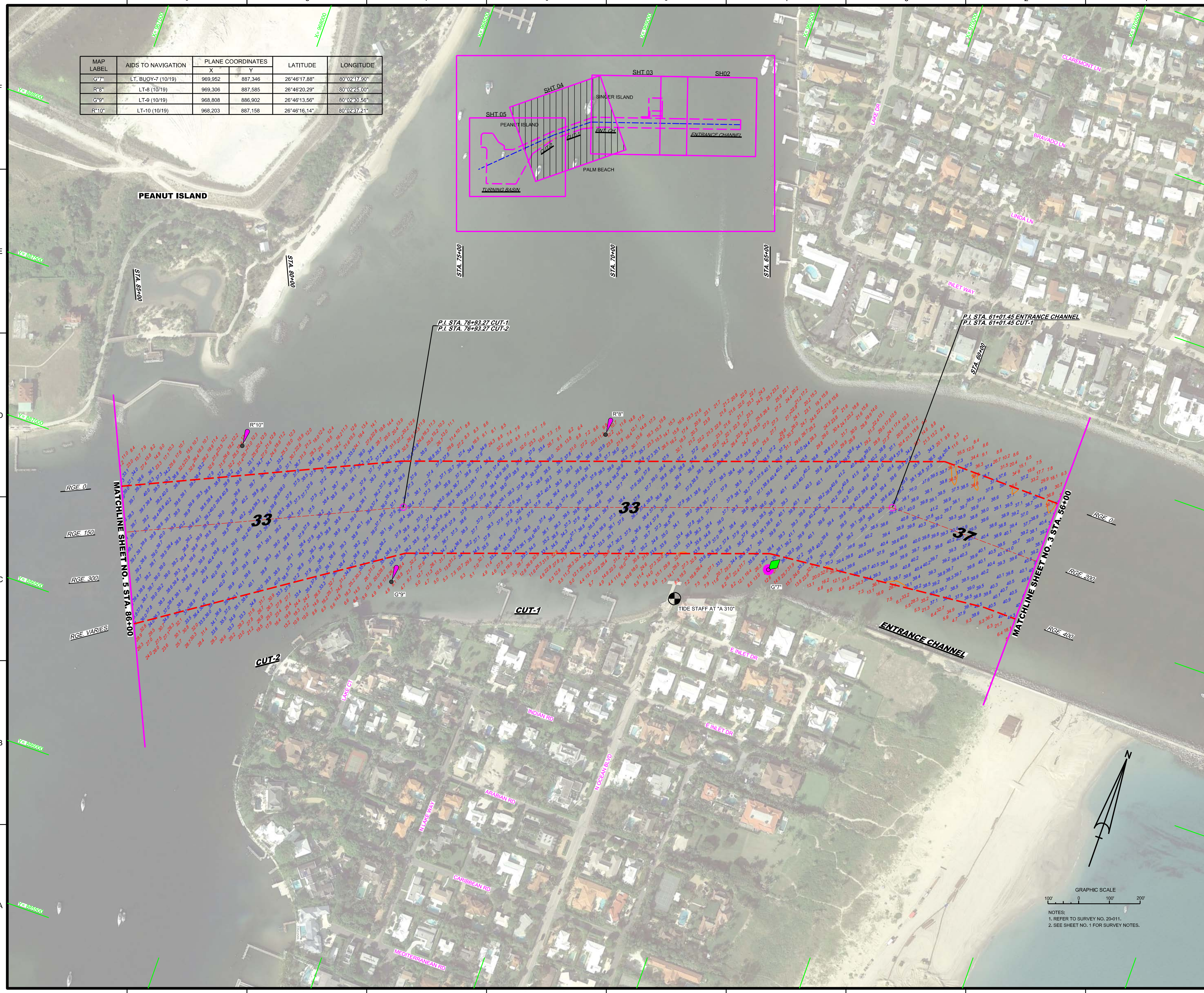
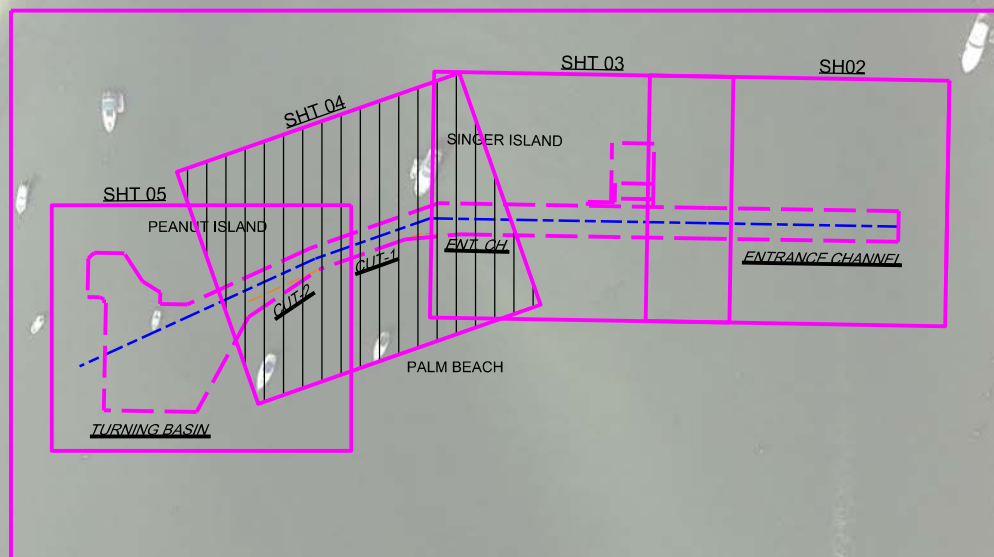
DEPARTMENT OF THE ARMY  
JACKSONVILLE DISTRICT, CORPS OF ENGINEERS  
JACKSONVILLE, FLORIDA

Checked By: GHR  
Designed By: WRM  
Drawn By: WRM  
In Charge: WRM  
Date: OCT 2019

20-011-AVAV.DGN  
20-011-HASOUN\_EC.DGN  
20-011-HASOUN\_CD.DGN  
20-011-HASOUN\_EC.DGN  
20-011-HASOUN\_CD.DGN  
20-011-BS-BSR.DGN  
20-011-HSH.DGN

PALM BEACH HARBOR, FLORIDA  
1Q EXAMINATION SURVEY FY20  
25, 33, 35, 37 & 39-FOOT PROJECT  
STA. 56+00 ENTRANCE CHANNEL THRU STA. 86+00 CUT-2  
PLAN

Scale: AS SHOWN  
Drawing no. 4  
SHEET 04 OF 05



GRAPHIC SCALE  
0 100' 200'

NOTES:  
1. REFER TO SURVEY NO. 20-011.  
2. SEE SHEET NO. 1 FOR SURVEY NOTES.

