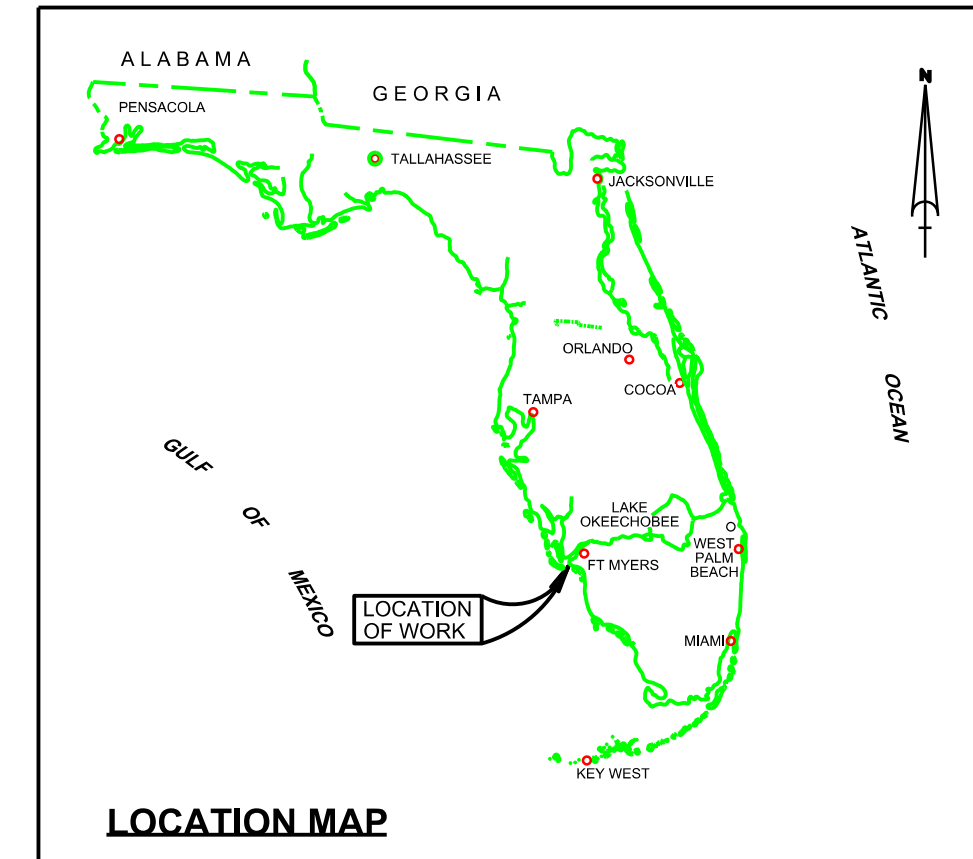


SHEET INDEX



FORT MYERS BEACH HARBOR LEE COUNTY, FLORIDA HYDROGRAPHIC EXAM SURVEY FY20 11 & 12-FOOT PROJECT

SURVEY NOTES

- REFER TO SURVEY NO. 20-009.
 - DEPTHS DEPICTED BY THIS SURVEY ARE REFERENCED TO MEAN LOWER LOW WATER (MLLW) OF THE 1983-2001 TIDAL EPOCH, AS REPORTED BY THE NATIONAL OCEANIC AND ATMOSPHERIC ADMINISTRATION (NOAA). NOAA'S VDATUM MODEL WAS USED AND CALIBRATED TO THE PUBLISHED MLLW HEIGHT OF THE BENCHMARK ASSOCIATED WITH THE TIDE GAUGE SITE SPECIFIED BELOW:
NOAA TIDAL STATION 872-5366 (PID: AD1372) FOR ALL CUTS.
 - TIDAL REDUCTIONS WERE OBTAINED UTILIZING A REAL-TIME KINEMATIC (RTK) GPS AND REFERENCED TO MLLW UTILIZING A HYPACK KINEMATIC TIDE DATUM (KTD) MODEL. KTD FILE NAME IS: "SPC-FL-WEST-2010-12-07.KTD".
 - ALL ELEVATIONS ARE BELOW THE CHART DATUM UNLESS PRECEDED BY A (+) SIGN.
 - PLANE COORDINATES ARE BASED ON THE TRANSVERSE MERCATOR PROJECTION FOR THE WEST ZONE OF FLORIDA AND REFERENCED TO NORTH AMERICAN DATUM OF 1983 (NAD83).
 - ALL STATIONING REFERS TO THE CENTERLINE OF THE CHANNEL.
 - THIS SURVEY WAS PERFORMED USING REAL-TIME KINEMATIC (RTK) GPS POSITIONING WITH THE FOLLOWING REFERENCE BASE LOCATIONS:
REFERENCE BASE LOCATED AT "STALEY" (PID: BBCJ30)
TIDE STAFF SET FROM "872 5366 TIDAL 2" (PID: AD1372)
VERTICAL MEASUREMENTS WERE MADE USING AN EDGETECH 6205 COMBINATION SIDESCAN AND MULTI-BEAM. ALL SOUNDINGS SHOWN ARE IN HIGH FREQUENCY.
- | VESSEL | DATE OF SURVEY | CUT |
|--------|----------------|--------------|
| SB-48 | 30-31 OCT 2019 | 1 THRU T.B. |
| TOPO | 29-31 OCT 2019 | BOWDITCH PT. |
- AIDS TO NAVIGATION WERE LOCATED DURING THIS SURVEY.
 - THE INFORMATION DEPICTED ON THIS MAP REPRESENTS THE RESULTS OF SURVEYS MADE ON THE DATES INDICATED ABOVE AND CAN ONLY BE CONSIDERED AS INDICATING THE GENERAL CONDITIONS AT THAT TIME. THIS CHART IS SOLELY FOR THE DISTRIBUTION OF AVAILABLE DEPTHS AT THE TIME OF THE SURVEY.
 - SURVEY ACCURACY PERFORMANCE STANDARDS, QUALITY CONTROL, AND QUALITY ASSURANCE REQUIREMENTS WERE FOLLOWED DURING THIS SURVEY IN ACCORDANCE WITH USACE EM 1110-2-1003, HYDROGRAPHIC SURVEYING, 30 NOV 13.

LEGEND	
	MONUMENT
	LIGHTED BEACON
	GREEN DAYBEACON
	RED DAYBEACON
	RED LIGHTED BUOY
	GREEN LIGHTED BUOY
	CAN BUOY
	NUN BUOY
	TIDE STAFF
	PROJECT DEPTH

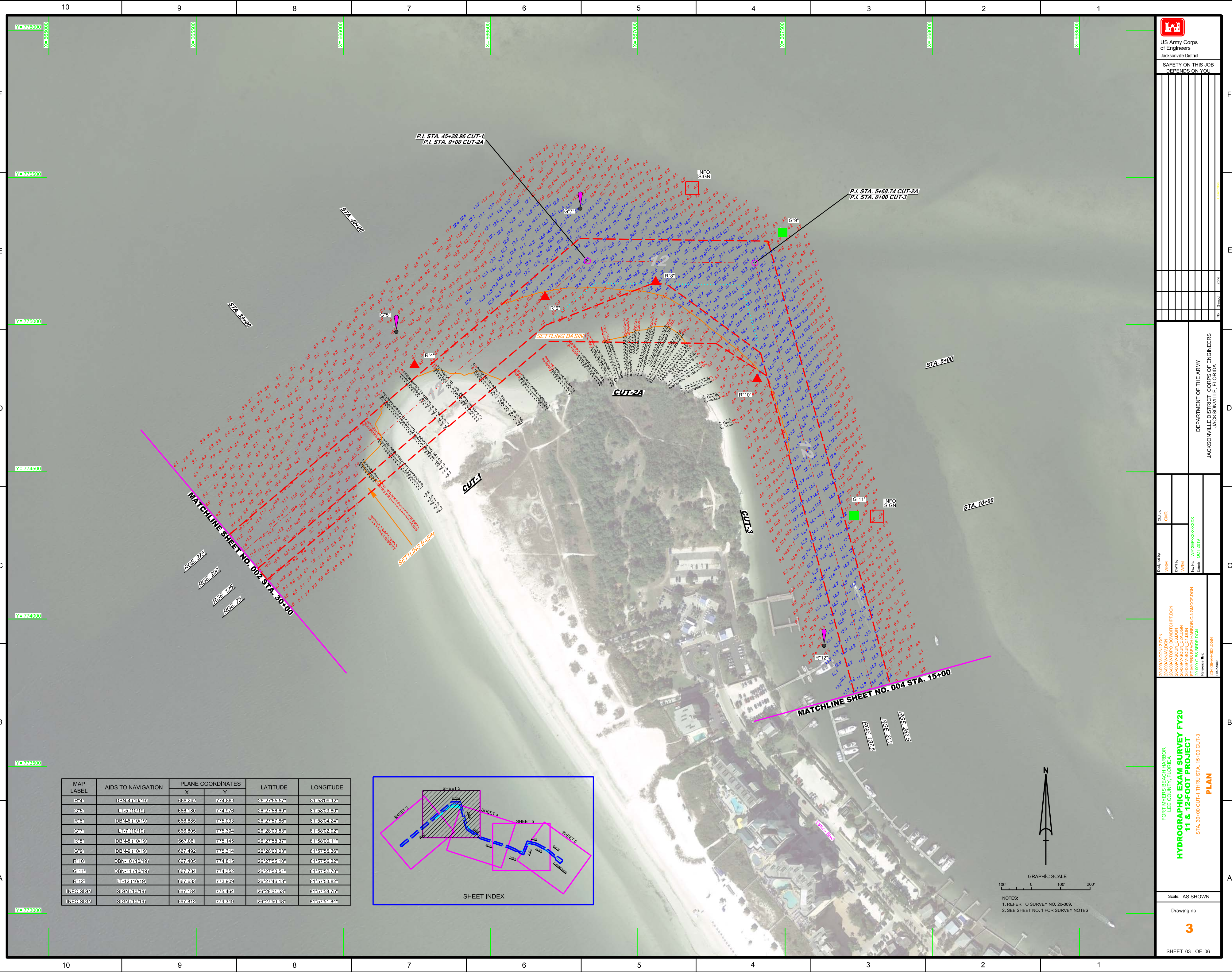
US Army Corps of Engineers
Jacksonville District
SAFETY ON THIS JOB
DEPENDS ON YOU

DEPARTMENT OF THE ARMY
JACKSONVILLE DISTRICT, CORPS OF ENGINEERS
JACKSONVILLE, FLORIDA

DESIGNED BY: WRM
CHECKED BY: GMR
DRAWN BY: WRM
FILE NO: W82255-NA-00000000
PROJECT: FORT MYERS BEACH HARBOR-CANAL-NOV-2019
DATE: OCT 2019

FORT MYERS BEACH HARBOR
LEE COUNTY, FLORIDA
HYDROGRAPHIC EXAM SURVEY FY20
11 & 12-FOOT PROJECT
INDEX, LOCATION AND VICINITY
MAP

Scale: AS SHOWN
Drawing no. 1
SHEET 01 OF 06



US Army Corps of Engineers

 Jacksonville District

 SAFETY ON THIS JOB

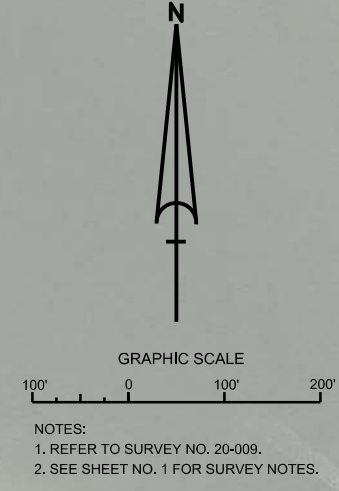
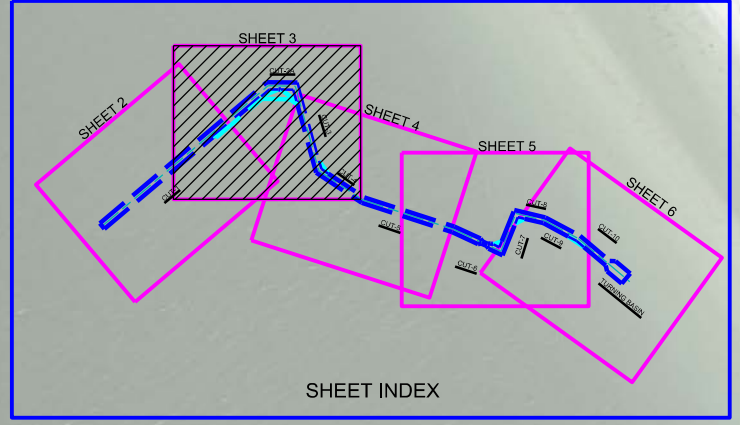
 DEPENDS ON YOU

Call by: GHR Designed by: WRM Drawn by: WRM File No: W1225A-000-0004 Date: OCT 2019	DEPARTMENT OF THE ARMY JACKSONVILLE DISTRICT, CORPS OF ENGINEERS JACKSONVILLE, FLORIDA
---	--

FORT MYERS BEACH HARBOR
 LEE COUNTY, FLORIDA
HYDROGRAPHIC EXAM SURVEY FY20
11 & 12-FOOT PROJECT
 STA. 30+00 CUT-1 THRU STA. 15+00 CUT-3
PLAN

Scale: AS SHOWN
 Drawing no. **3**
 SHEET 03 OF 06

MAP LABEL	AIDS TO NAVIGATION	PLANE COORDINATES		LATITUDE	LONGITUDE
		X	Y		
R4*	DBN-1(1019)	666,242	774,868	28°27'55.57"	81°58'09.12"
G5*	LT-5(1019)	666,180	774,976	28°27'56.69"	81°58'09.60"
R6*	DBN-6(1019)	666,685	775,093	28°27'57.86"	81°58'04.24"
G7*	LT-7(1019)	666,605	775,194	28°28'00.83"	81°58'02.92"
R8*	DBN-8(1019)	667,061	775,145	28°27'58.37"	81°58'00.11"
G9*	DBN-9(1019)	667,492	775,314	28°28'00.03"	81°57'55.36"
R10*	DBN-10(1019)	667,405	774,815	28°27'55.10"	81°57'56.92"
G11*	DBN-11(1019)	667,784	774,852	28°27'50.51"	81°57'52.70"
R12*	LT-12(1019)	667,633	774,909	28°27'46.13"	81°57'53.32"
INFO SIGN	SIGN(1019)	667,184	775,164	28°28'01.55"	81°57'58.75"
INFO SIGN	SIGN(1019)	667,812	774,849	28°27'50.45"	81°57'51.84"



MAP LABEL	AIDS TO NAVIGATION	PLANE COORDINATES		LATITUDE	LONGITUDE
		X	Y		
G*13*	DBN-13 (10/19)	667.975	773.746	26°27'44.51"	81°57'50.05"
G*15*	LT-15 (10/19)	669.029	772.946	26°27'36.58"	81°57'38.45"

US Army Corps of Engineers
Jacksonville District
SAFETY ON THIS JOB DEPENDS ON YOU

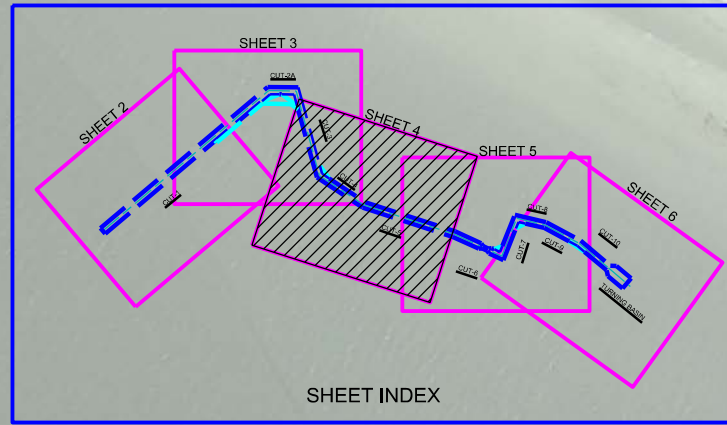
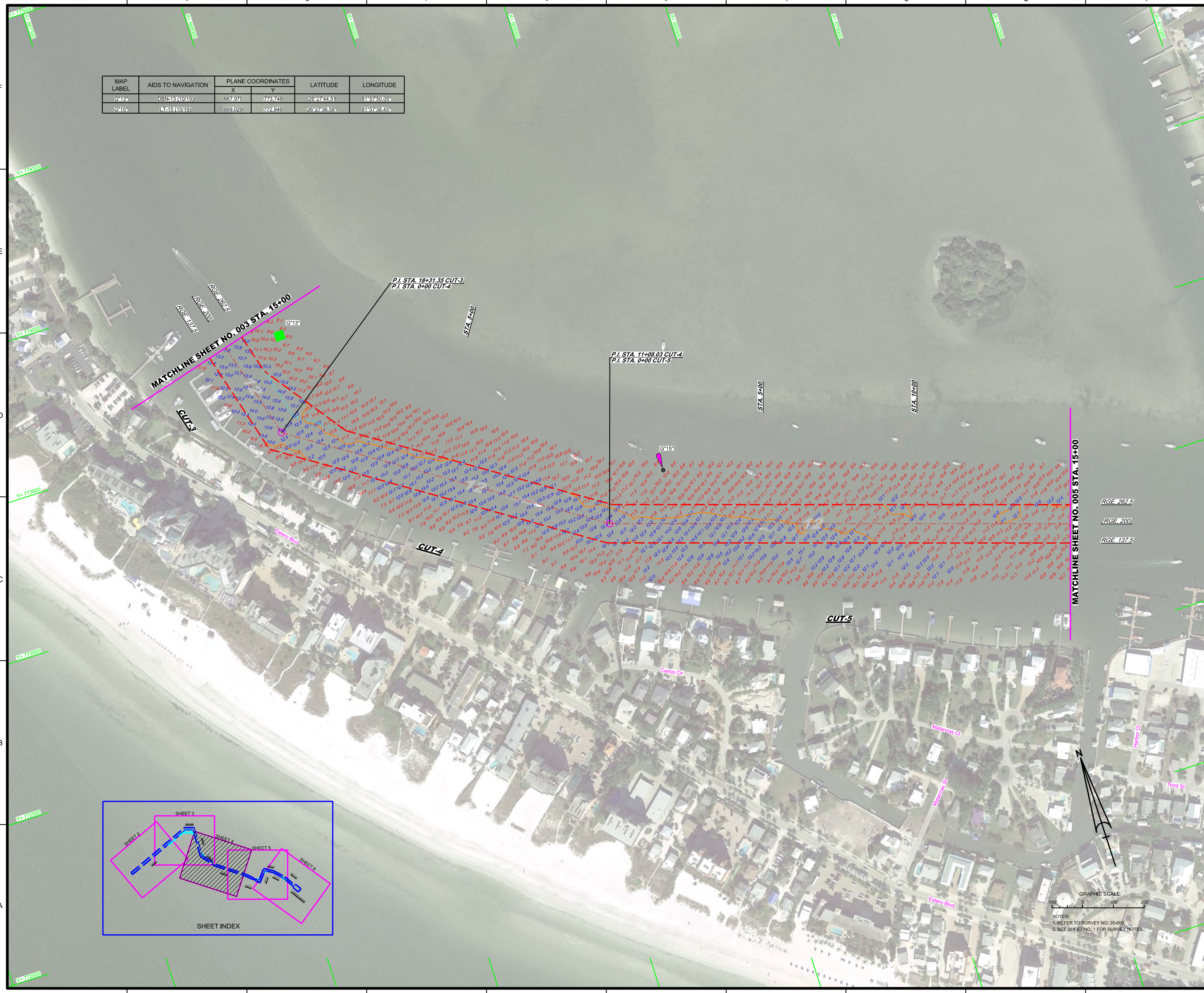
Checked by:	GHM
Designed by:	WRM
Drawn by:	WRM
File No.:	WR2005A-0004-0004
Project:	FT MYERS BEACH HARBOR
Date:	OCT 2019

DEPARTMENT OF THE ARMY
JACKSONVILLE DISTRICT, CORPS OF ENGINEERS
JACKSONVILLE, FLORIDA

2005A-0004-0004-0004
2005A-0004-0004-0004
2005A-0004-0004-0004
FT MYERS BEACH HARBOR-CANAL
2005A-0004-0004-0004
Reference File:
2005A-0004-0004-0004

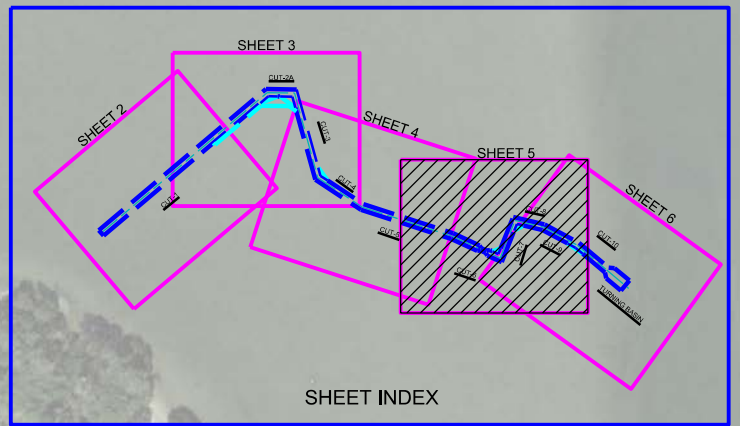
HYDROGRAPHIC EXAM SURVEY FY20
11 & 12-FOOT PROJECT
STA. 15+00 CUT-3 THRU STA. 15+00 CUT-5
PLAN

Scale: AS SHOWN
Drawing No. **4**
SHEET 04 OF 06




GRAPHIC SCALE
100' 0 100' 200'

NOTES:
1. REFER TO SURVEY NO. 20-009.
2. SEE SHEET NO. 1 FOR SURVEY NOTES.



MAP LABEL	AIDS TO NAVIGATION	PLANE COORDINATES		LATITUDE	LONGITUDE
		X	Y		
G-17	DBN-17 (10/19)	670.692	772.404	26°27'31.20"	81°57'20.16"
R-18	DBN-18 (10/19)	671.854	771.910	26°27'26.31"	81°57'07.87"
R-20	DBN-20 (10/19)	671.981	772.266	26°27'29.83"	81°57'05.97"
R-22	DBN-22 (10/19)	672.184	772.429	26°27'31.45"	81°57'03.74"
R-24	DBN-24 (10/19)	672.588	772.817	26°27'30.34"	81°56'59.30"
INFO SIGN	SIGN (10/19)	671.880	771.774	26°27'24.96"	81°57'07.31"



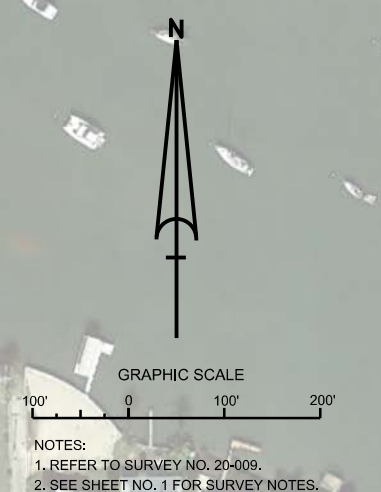
US Army Corps of Engineers
Jacksonville District
SAFETY ON THIS JOB
DEPENDS ON YOU

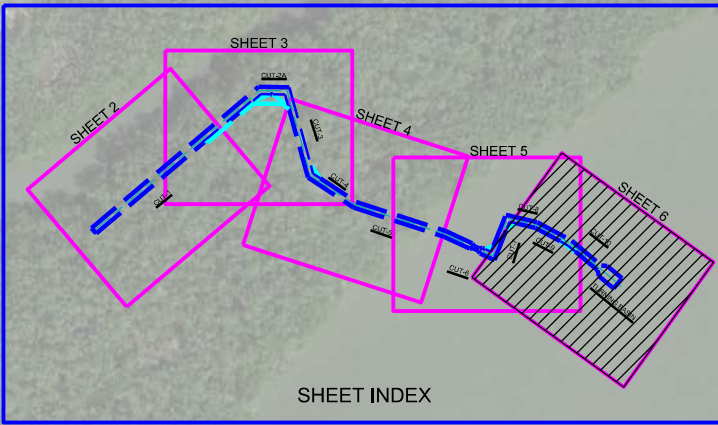
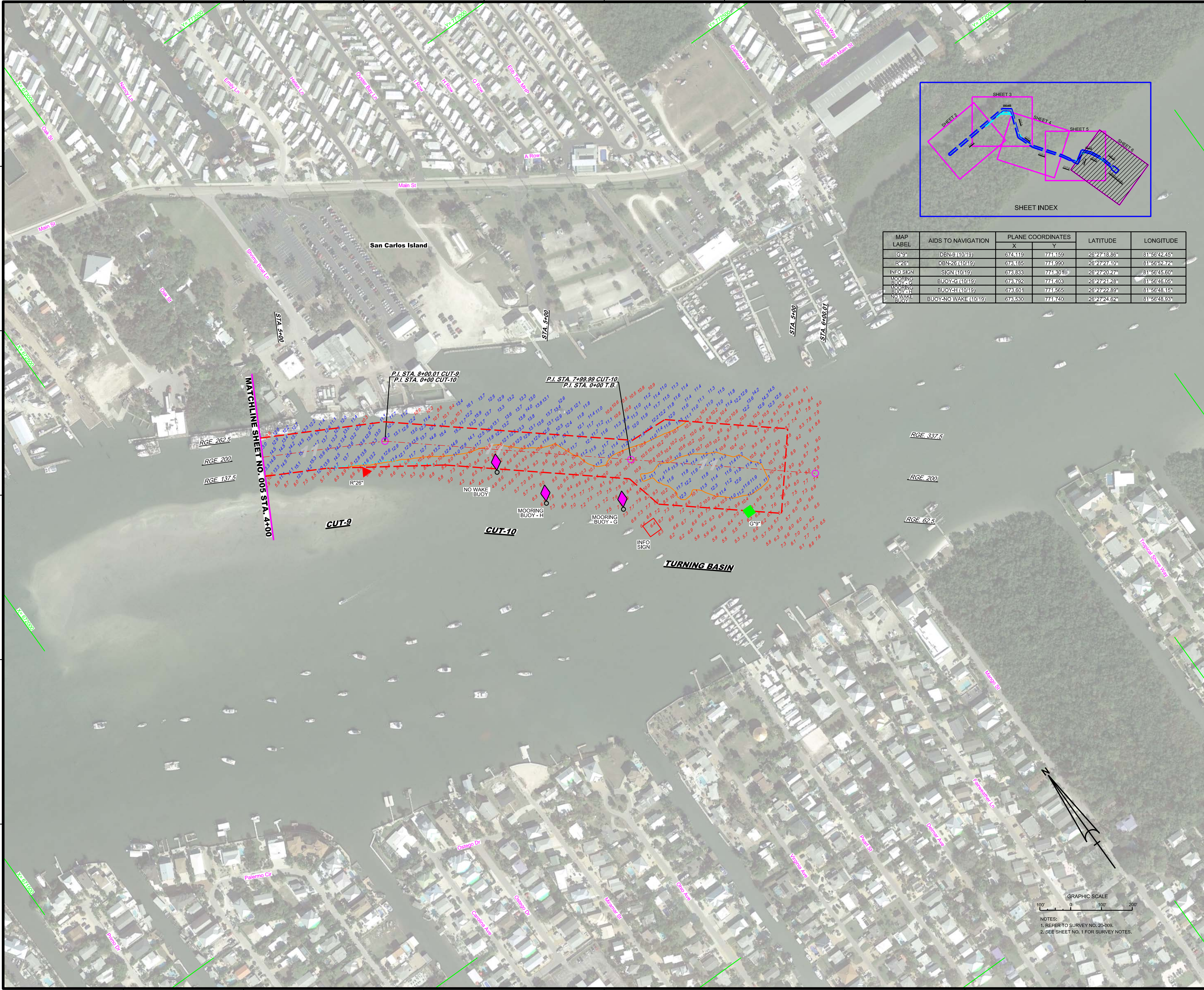
DEPARTMENT OF THE ARMY
JACKSONVILLE DISTRICT, CORPS OF ENGINEERS
JACKSONVILLE, FLORIDA

Drawn by: GHR
Checked by: GHR
Designed by: WRM
Reviewed by: WRM
Project No.: 20-009-111-0000
Project Name: FORT MYERS BEACH HARBOR LEE COUNTY, FLORIDA
Date: OCT 2019


HYDROGRAPHIC EXAM SURVEY FY20
11 & 12-FOOT PROJECT
PLAN
STA. 15+00 CUT-5 THRU STA. 4+00 CUT-9

Scale: AS SHOWN
Drawing no. **5**
SHEET 05 OF 06





MAP LABEL	AIDS TO NAVIGATION	PLANE COORDINATES		LATITUDE	LONGITUDE
		X	Y		
G-9	DBN-9 (10/19)	674.119	774.159	26°27'18.86"	81°56'42.45"
R-26	DBN-26 (10/19)	673.185	774.990	26°27'27.10"	81°56'52.72"
INFO SIGN	SIGN (10/19)	673.833	774.301	26°27'20.27"	81°56'45.60"
MOORING BUOY - G	BUOY-G (10/19)	673.792	774.403	26°27'21.28"	81°56'46.05"
MOORING BUOY - H	BUOY-H (10/19)	673.601	774.565	26°27'22.89"	81°56'48.15"
NO WAKE BUOY	BUOY-NO WAKE (10/19)	673.530	774.740	26°27'24.62"	81°56'48.93"



US Army Corps of Engineers
Jacksonville District

**SAFETY ON THIS JOB
DEPENDS ON YOU**

DEPARTMENT OF THE ARMY
JACKSONVILLE DISTRICT, CORPS OF ENGINEERS
JACKSONVILLE, FLORIDA

Drawn by: GHR
Checked by: WRM
Designed by: WRM
Project No: WR225A-000-0000
Contract: OCT 2019

2009A-CON/L100N
2009A-NAV/00N
2009A-SOIL_C10-18.DGN
FT MYERS BEACH/HARBOR-CON/00F.DGN
2009G-BS-BRDALDN
Reference File:
2009A-H00L00N

FORT MYERS BEACH HARBOR
LEE COUNTY, FLORIDA

**HYDROGRAPHIC EXAM SURVEY FY20
11 & 12-FOOT PROJECT**

STA. 4+00 CUT-9 THRU STA 9+00 TURNING BASIN

PLAN

Scale: AS SHOWN

Drawing no.
6

SHEET 06 OF 06