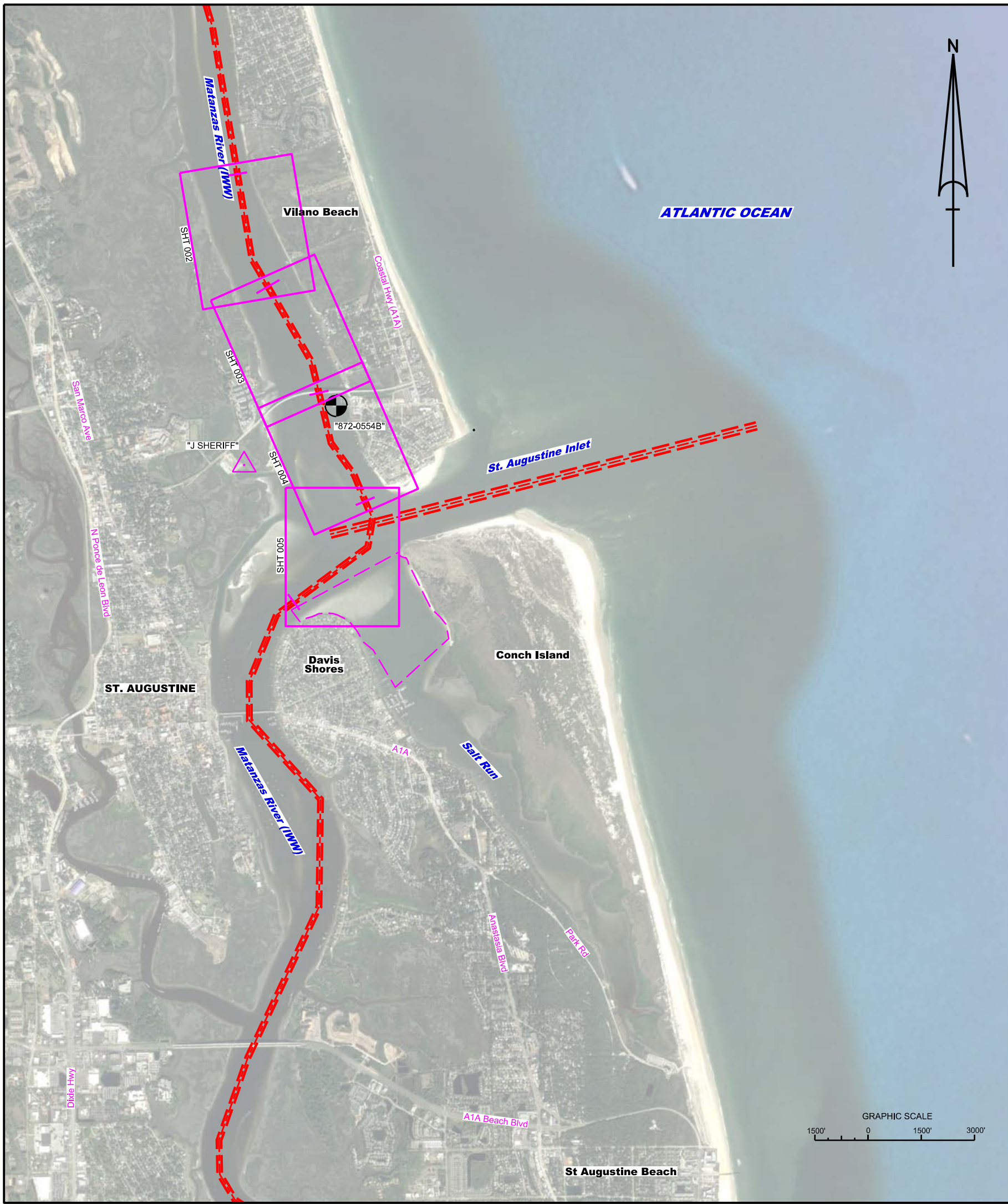
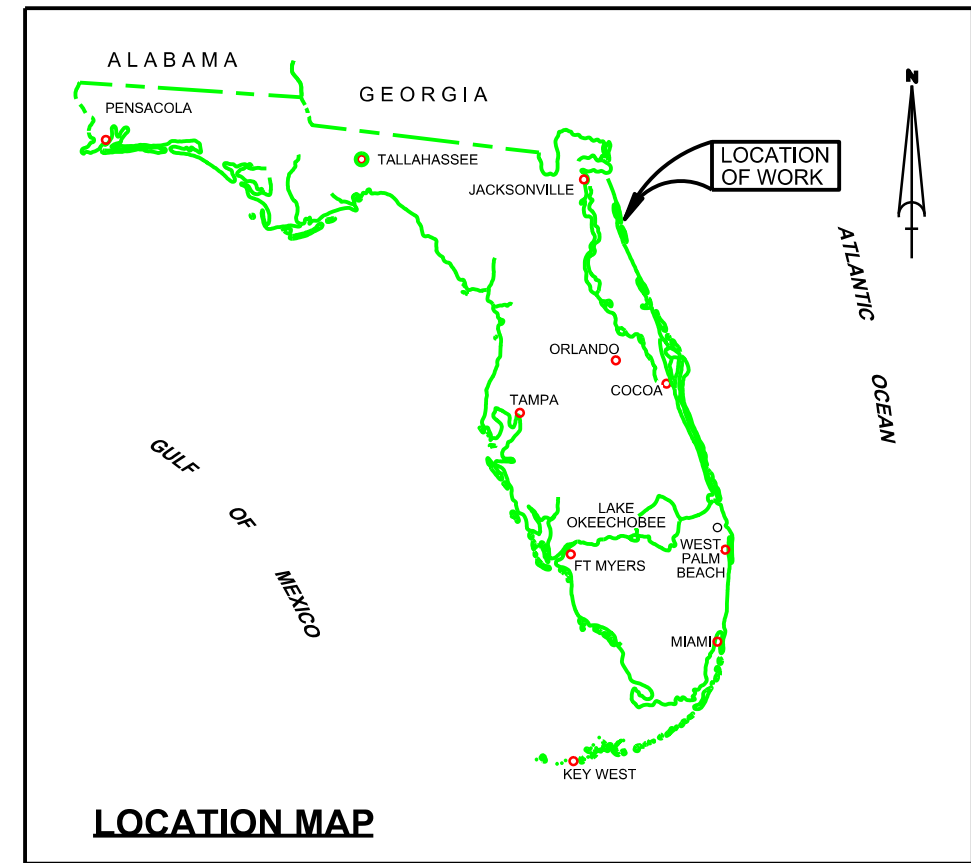


IWW CUTS 28 & 28A, FLOOD SHOAL AND DAVIS SHORES SHOAL ST. AUGUSTINE, ST. JOHNS COUNTY, FLORIDA HYDROGRAPHIC EXAM SURVEY FY20



SURVEY NOTES

1. REFER TO SURVEY NO. 20-004.
 2. DEPTHS DEPICTED BY THIS SURVEY ARE REFERENCED TO THE NORTH AMERICAN VERTICAL DATUM OF 1988 (NAVD88).
NOAA TIDAL STATION 872-0554 USED FOR THE ENTIRE PROJECT (PID: DL5712)
 3. TIDAL REDUCTIONS WERE OBTAINED UTILIZING A REAL-TIME KINEMATIC (RTK) GPS AND REFERENCED TO NAVD88. A TIDE STAFF PREVIOUSLY SET FROM SURVEY MONUMENT "872 0554 B", LOCATED ON A WOODEN PILING SOUTH OF THE CONTROL POINT, WAS USED TO VERIFY RTK TIDES PRIOR TO SURVEYING.
 4. ALL ELEVATIONS ARE BELOW THE CHART DATUM UNLESS PRECEDED BY A (+) SIGN.
 5. PLANE COORDINATES ARE BASED ON THE TRANSVERSE MERCATOR PROJECTION FOR THE EAST ZONE OF FLORIDA AND REFERENCED TO NORTH AMERICAN DATUM OF 1983 (NAD83).
 6. THIS SURVEY WAS PERFORMED USING REAL-TIME KINEMATIC (RTK) GPS POSITIONING WITH THE FOLLOWING REFERENCE BASE LOCATION:
REFERENCE BASE LOCATED AT "J SHERIFF" (PID: BBCJ50)
 7. VERTICAL MEASUREMENTS WERE MADE USING A ROSS SMARTSOUNDER DUAL-FREQUENCY 28/200 KHZ SINGLE-BEAM TRANSDUCER. ALL DEPTHS SHOWN ARE IN HIGH FREQUENCY.
- | VESSEL | DATE OF SURVEY | CUT |
|--------|----------------|--|
| SB-50 | 11 OCT 2019 | IWW CUTS 28 & 28A, FLOOD SHOAL, DAVIS SHORES SHOAL |
8. AIDS TO NAVIGATION WERE COLLECTED DURING THIS SURVEY.
 9. THE INFORMATION DEPICTED ON THIS MAP REPRESENTS THE RESULTS OF SURVEYS MADE ON THE DATES INDICATED ABOVE AND CAN ONLY BE CONSIDERED AS INDICATING THE GENERAL CONDITIONS AT THAT TIME. THIS CHART IS SOLELY FOR THE DISTRIBUTION OF AVAILABLE DEPTHS AT THE TIME OF THE SURVEY.
 10. SURVEY ACCURACY PERFORMANCE STANDARDS, QUALITY CONTROL, AND QUALITY ASSURANCE REQUIREMENTS WERE FOLLOWED DURING THIS SURVEY IN ACCORDANCE WITH USACE EM 1110-2-1003, HYDROGRAPHIC SURVEYING, 30 NOV 2013.

LEGEND	
	MONUMENT
	LIGHTED BEACON
	GREEN DAY BEACON
	RED DAY BEACON
	RED LIGHTED BUOY
	GREEN LIGHTED BUOY
	CAN BUOY
	NUN BUOY
	TIDE STAFF
	PROJECT DEPTH

US Army Corps of Engineers
Jacksonville District

SAFETY ON THIS JOB
DEPENDS ON YOU

Checked by:	GHK	Designed by:	WRM	Drawn by:	WRM	File Name:	WR2019-000000	Date:	OCT 2019
DEPARTMENT OF THE ARMY JACKSONVILLE DISTRICT, CORPS OF ENGINEERS JACKSONVILLE, FLORIDA									
INTRACOASTAL WATERWAY JACKSONVILLE TO MIAMI, FLORIDA ST. JOHNS COUNTY HYDROGRAPHIC EXAM SURVEY FY20 12-FOOT PROJECT INDEX, LOCATION AND VICINITY MAP									
Scale: AS SHOWN Drawing no. 1 / 4									
SHEET 01 OF 05									

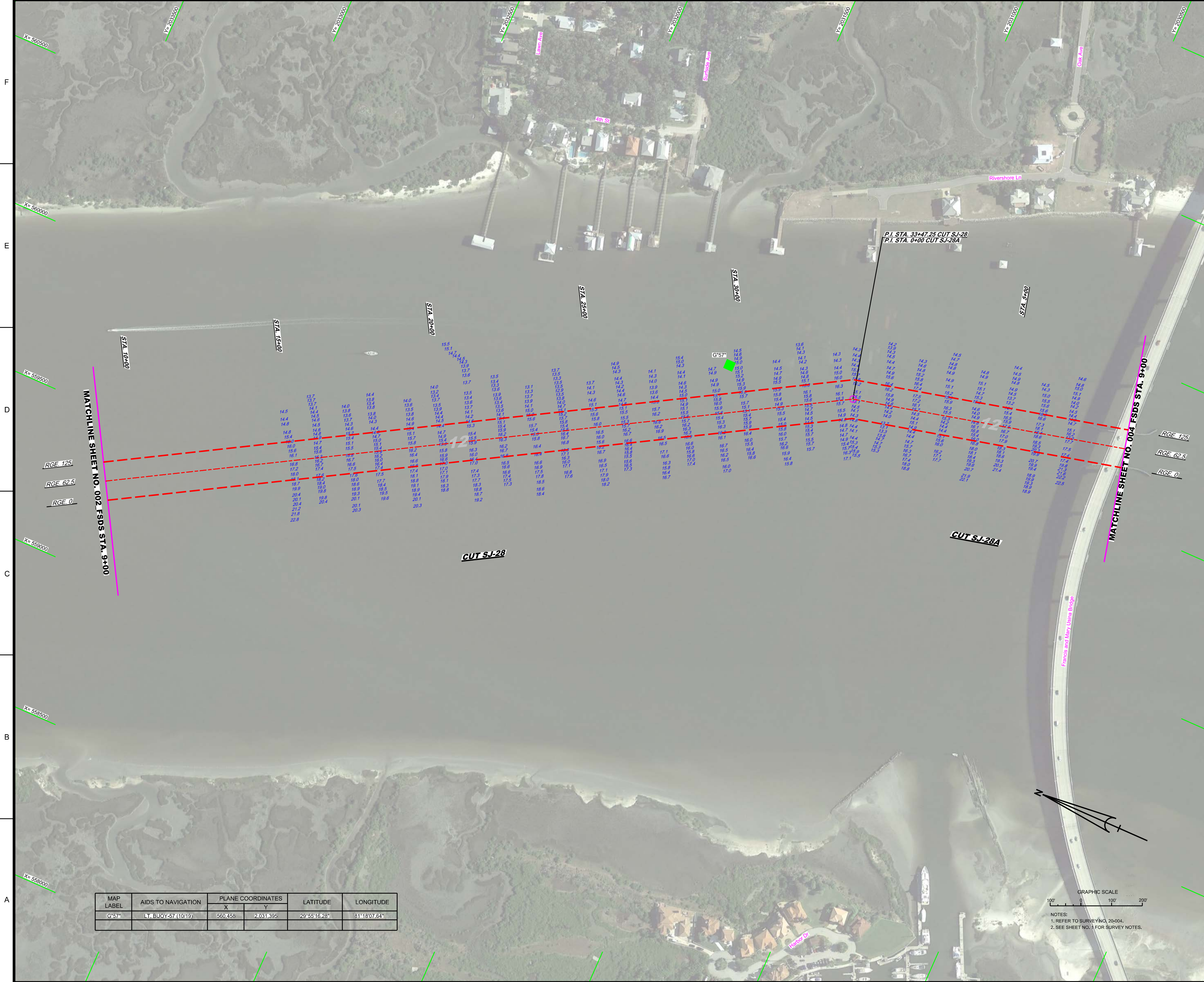
US Army Corps of Engineers
Jacksonville District
SAFETY ON THIS JOB DEPENDS ON YOU

DEPARTMENT OF THE ARMY
JACKSONVILLE DISTRICT, CORPS OF ENGINEERS
JACKSONVILLE, FLORIDA

Checked by: GHR
Designed by: WRM
Drawn by: WRM
File No: W82P25-000-0000
Date: OCT 2019
Reference File: 200004H000L_FSDS.DGN

INTRACOASTAL WATERWAY
JACKSONVILLE TO MIAMI, FLORIDA
ST. JOHNS COUNTY
HYDROGRAPHIC EXAM SURVEY FY20
12-FOOT PROJECT
STA. 9+00 CUT SJ-28 THRU STA. 9+00 CUT SJ-28A
PLAN

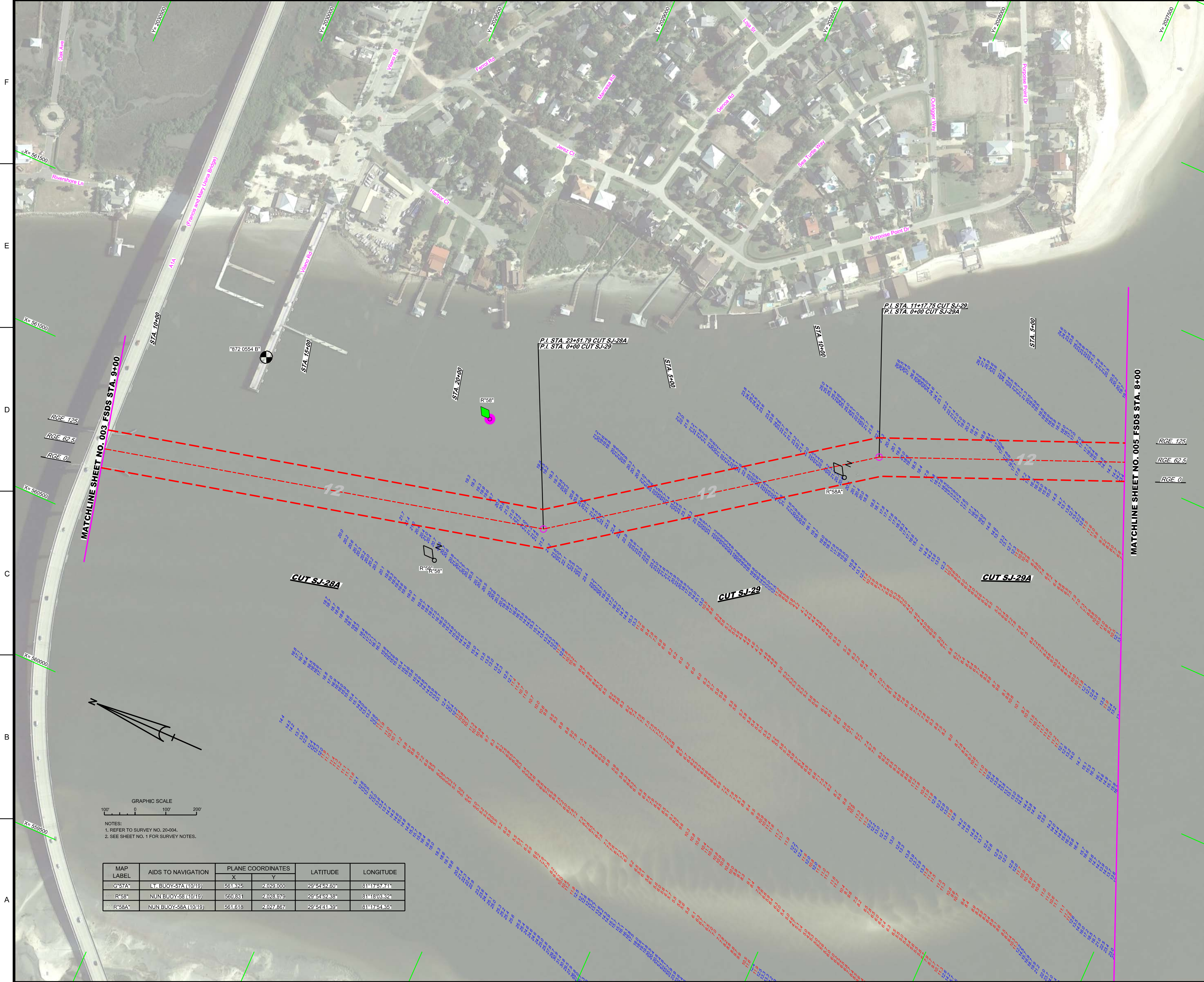
Scale: AS SHOWN
Drawing no. **2 / 4**
SHEET 03 OF 05



MAP LABEL	AIDS TO NAVIGATION	PLANE COORDINATES		LATITUDE	LONGITUDE
		X	Y		
G57*	LT BUOY-57 (10/19)	560458	2031395	29°55'16.28"	81°18'07.64"

GRAPHIC SCALE
0 100' 200'

NOTES:
1. REFER TO SURVEY NO. 20-004.
2. SEE SHEET NO. 1 FOR SURVEY NOTES.



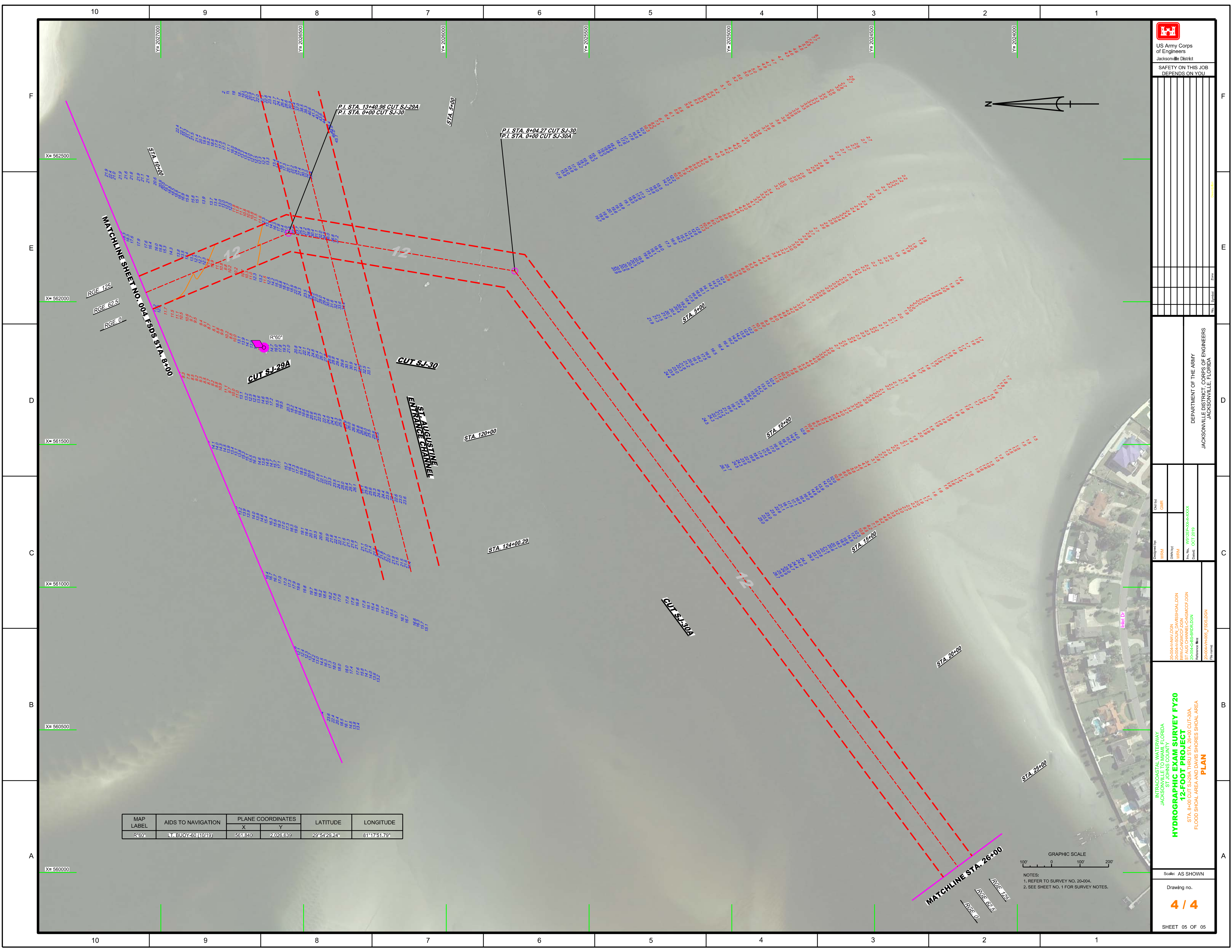
GRAPHIC SCALE
0 100 200
NOTES:
1. REFER TO SURVEY NO. 20-004.
2. SEE SHEET NO. 1 FOR SURVEY NOTES.

MAP LABEL	AIDS TO NAVIGATION	PLANE COORDINATES		LATITUDE	LONGITUDE
		X	Y		
G-57A	LT. BUOY-57A (10/19)	561325	2,029,000	29°54'52.60"	81°47'57.71"
R-58	NUN BUOY-58 (10/19)	560831	2,028,979	29°54'52.38"	81°48'03.92"
R-58A	NUN BUOY-58A (10/19)	561618	2,027,887	29°54'41.39"	81°47'54.35"



US Army Corps
of Engineers
Jacksonville District

SAFETY ON THIS JOB
DEPENDS ON YOU



MAP LABEL	AIDS TO NAVIGATION	PLANE COORDINATES		LATITUDE	LONGITUDE
		X	Y		
R*60*	LT. BUOY-60 (10/19)	561,840	2,026,639	29°54'29.24"	81°17'51.79"



NOTES:
1. REFER TO SURVEY NO. 20-004.
2. SEE SHEET NO. 1 FOR SURVEY NOTES.

Checked By:	GMR
Designed By:	WRM
DRAWN BY:	WRM
Date:	OCT 2019
Project:	INTRACOASTAL WATERWAY JACKSONVILLE TO MIAMI, FLORIDA ST. JOHN'S COUNTY 12-FOOT PROJECT FLOOD SHOAL AREA AND DAVIS SHOALS SHOAL AREA PLAN
Reference File:	20-004-HYDRO_F_BSD.DGN

Scale: AS SHOWN
Drawing no. **4 / 4**
SHEET 05 OF 05