

# LONGBOAT PASS MANATEE COUNTY, FLORIDA PROJECT CONDITION SURVEY FY19 10 AND 12-FOOT PROJECT

### SURVEY NOTES

- REFER TO SURVEY NO. 19-266.
  - SOUNDINGS ARE IN FEET AND TENTHS AND REFER TO NOAA'S REPORTED MEAN LOWER LOW WATER (MLLW) OF THE 1983-2001 TIDAL EPOCH.
  - TIDAL REDUCTIONS WERE OBTAINED UTILIZING A REAL-TIME KINEMATIC (RTK) GPS AND REFERENCED TO MLLW UTILIZING A HYPACK KINEMATIC TIDE DATUM (KTD) MODEL. KTD FILE NAME IS: "SPC-FL-WEST-2010-12-07.KTD".
  - ALL ELEVATIONS ARE BELOW THE CHART DATUM UNLESS PRECEDED BY A (+) SIGN.
  - PLANE COORDINATES ARE BASED ON THE TRANSVERSE MERCATOR PROJECTION FOR THE WEST ZONE OF FLORIDA AND REFERENCED TO NORTH AMERICAN DATUM OF 1983 (NAD83).
  - ALL STATIONING REFERS TO THE CENTERLINE OF THE CHANNEL.
  - THIS SURVEY WAS PERFORMED USING REAL-TIME KINEMATIC (RTK) GPS POSITIONING WITH THE FOLLOWING REFERENCE BASE LOCATION:  
REFERENCE BASE LOCATED AT "GIS-106" (PID: AG9211)
  - DEPTHS DEPICTED BY THIS SURVEY ARE REFERENCED TO MLLW, TIDAL EPOCH 1983-2001, AS REPORTED BY THE NATIONAL OCEANIC AND ATMOSPHERIC ADMINISTRATION (NOAA). A MODIFIED VERSION OF NOAA'S VDATUM MODEL WAS USED TO CALIBRATE TO THE PUBLISHED MLLW HEIGHTS OF THE BENCH MARK BELOW:  
NOAA TIDAL STATION "872 6217 TIDAL 1" USED FOR ALL CUTS (PID: AG2000)  
VERTICAL MEASUREMENTS WERE MADE USING A ROSS SMART SOUNDER 835 SINGLE-BEAM TRANSDUCER OPERATING AT 28200 KHZ. ALL SOUNDINGS SHOWN ARE IN HIGH FREQUENCY.
- | VESSEL | DATE OF SURVEY | CUT      |
|--------|----------------|----------|
| SB-36  | 03 OCT 2019    | CUTS 1-3 |
- AIDS TO NAVIGATION WERE LOCATED DURING THIS SURVEY.
  - THE INFORMATION DEPICTED ON THIS MAP REPRESENTS THE RESULTS OF SURVEYS MADE ON THE DATES INDICATED ABOVE AND CAN ONLY BE CONSIDERED AS INDICATING THE GENERAL CONDITIONS AT THAT TIME. THIS CHART IS SOLELY FOR THE DISTRIBUTION OF AVAILABLE DEPTHS AT THE TIME OF THE SURVEY.
  - SURVEY ACCURACY PERFORMANCE STANDARDS, QUALITY CONTROL, AND QUALITY ASSURANCE REQUIREMENTS WERE FOLLOWED DURING THIS SURVEY IN ACCORDANCE WITH USACE EM 1110-2-1003, HYDROGRAPHIC SURVEYING, 30 NOV 13.

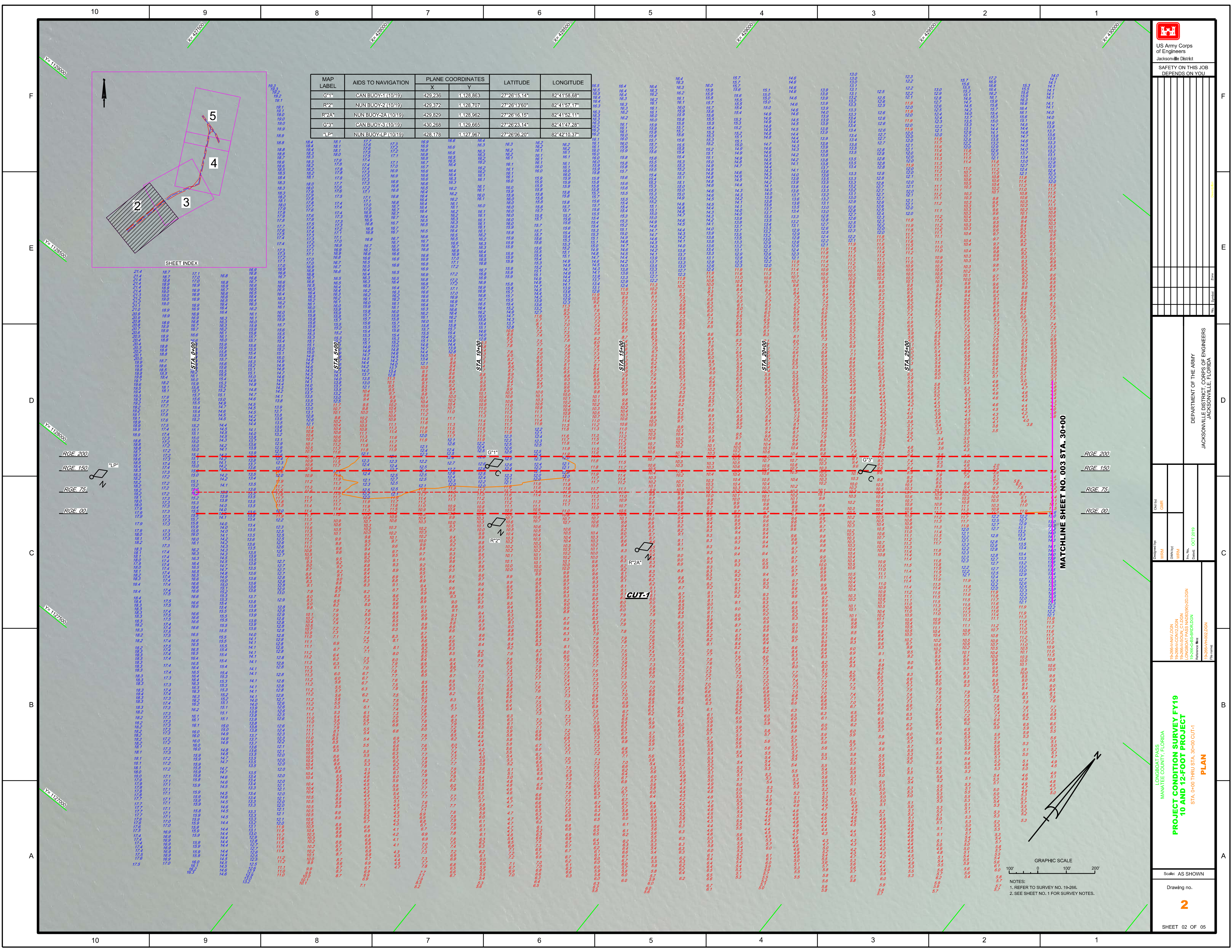
LEGEND	
	MONUMENT
	LIGHTED BEACON
	GREEN DAYBEACON
	RED DAYBEACON
	RED LIGHTED BUOY
	GREEN LIGHTED BUOY
	CAN BUOY
	NUN BUOY
	TIDE STAFF
	PROJECT DEPTH

US Army Corps of Engineers  
Jacksonville District

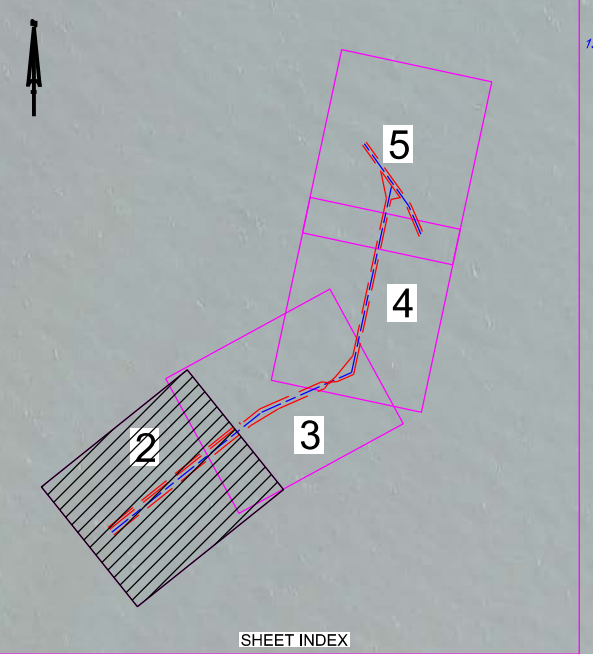
SAFETY ON THIS JOB  
DEPENDS ON YOU

<p>DEPARTMENT OF THE ARMY JACKSONVILLE DISTRICT, CORPS OF ENGINEERS JACKSONVILLE, FLORIDA</p>	<p>LONGBOAT PASS MANATEE COUNTY, FLORIDA <b>PROJECT CONDITION SURVEY FY19 10 AND 12-FOOT PROJECT</b> INDEX, LOCATION AND VICINITY <b>MAP</b></p>
<p>Scale: AS SHOWN</p> <p>Drawing no. <b>1</b></p>	<p>SHEET 01 OF 05</p>





MAP LABEL	AIDS TO NAVIGATION	PLANE COORDINATES		LATITUDE	LONGITUDE
		X	Y		
G-1*	CAN BUOY-1 (10/19)	429,236	1128,863	27°26'15.14"	82°41'58.68"
R-2A*	NUN BUOY-2A (10/19)	429,372	1128,707	27°26'13.60"	82°41'57.17"
R-2A*	NUN BUOY-2A (10/19)	429,829	1128,929	27°26'16.15"	82°41'52.11"
G-3*	CAN BUOY-3 (10/19)	430,268	1129,665	27°26'23.14"	82°41'47.28"
LP*	NUN BUOY-LP (10/19)	428,178	1127,967	27°26'06.20"	82°42'10.37"



**US Army Corps of Engineers**  
Jacksonville District

**SAFETY ON THIS JOB**  
DEPENDS ON YOU

Department of the Army  
Jacksonville District, Corps of Engineers  
Jacksonville, Florida

Project: PROJECT CONDITION SURVEY FY19  
10 AND 12-FOOT PROJECT  
STA. 0+00 THRU STA. 30+00 CUT-1

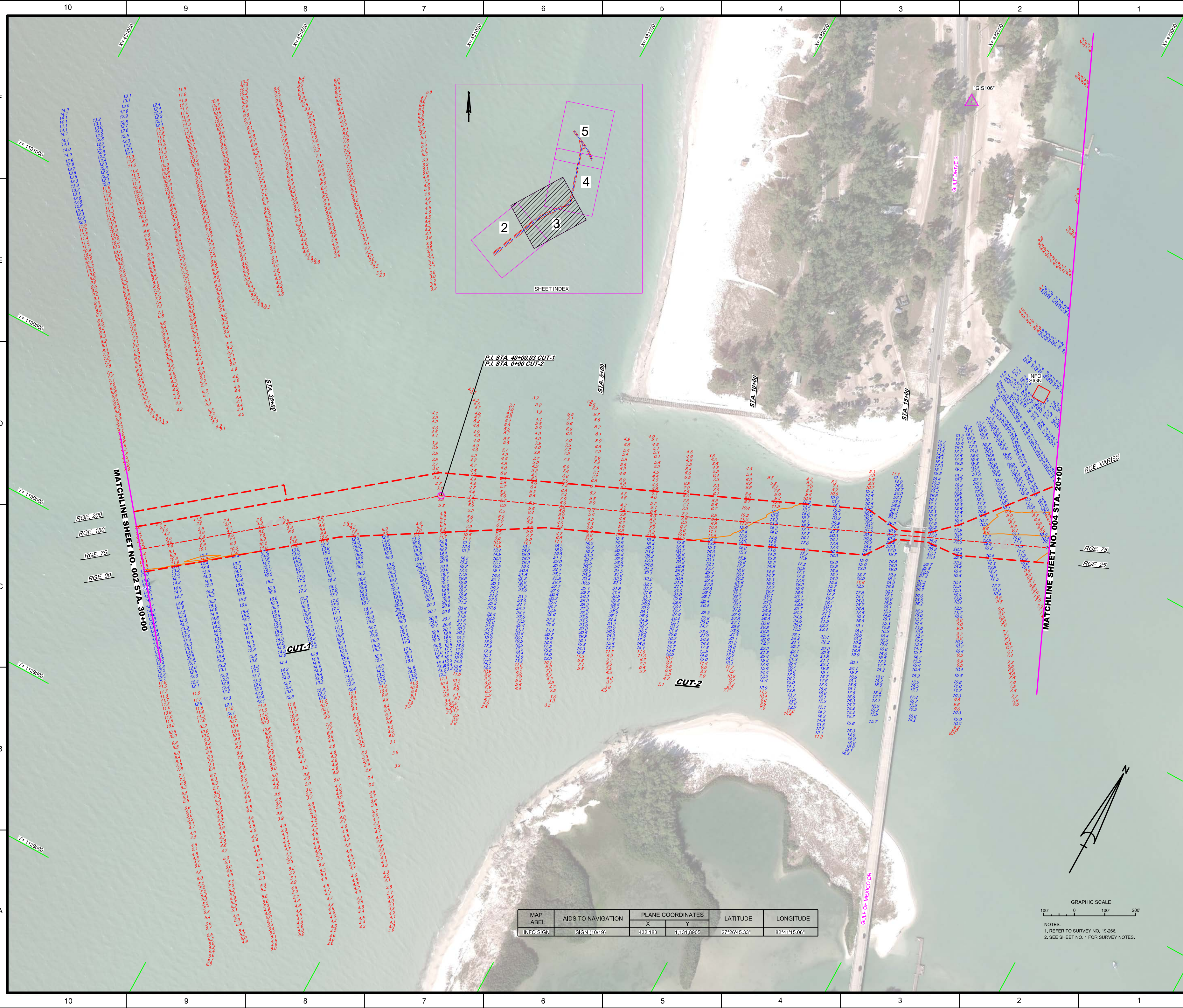
Scale: AS SHOWN

Drawing No. 2

SHEET 02 OF 05

Notes:  
1. REFER TO SURVEY NO. 19-266.  
2. SEE SHEET NO. 1 FOR SURVEY NOTES.





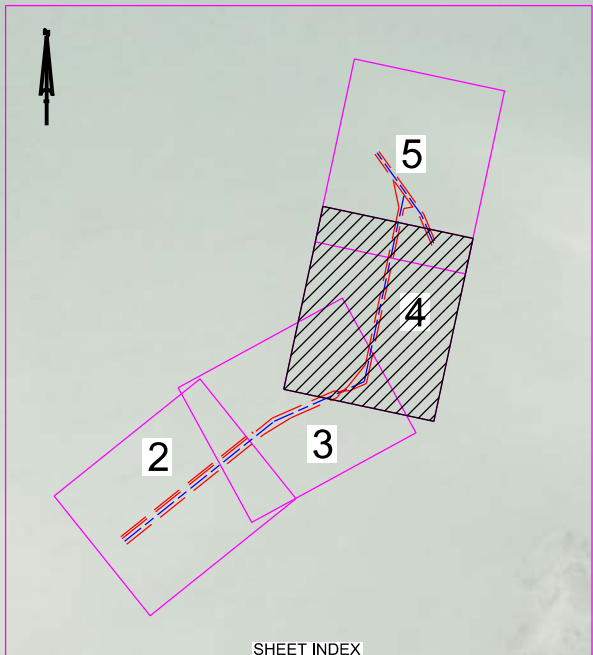
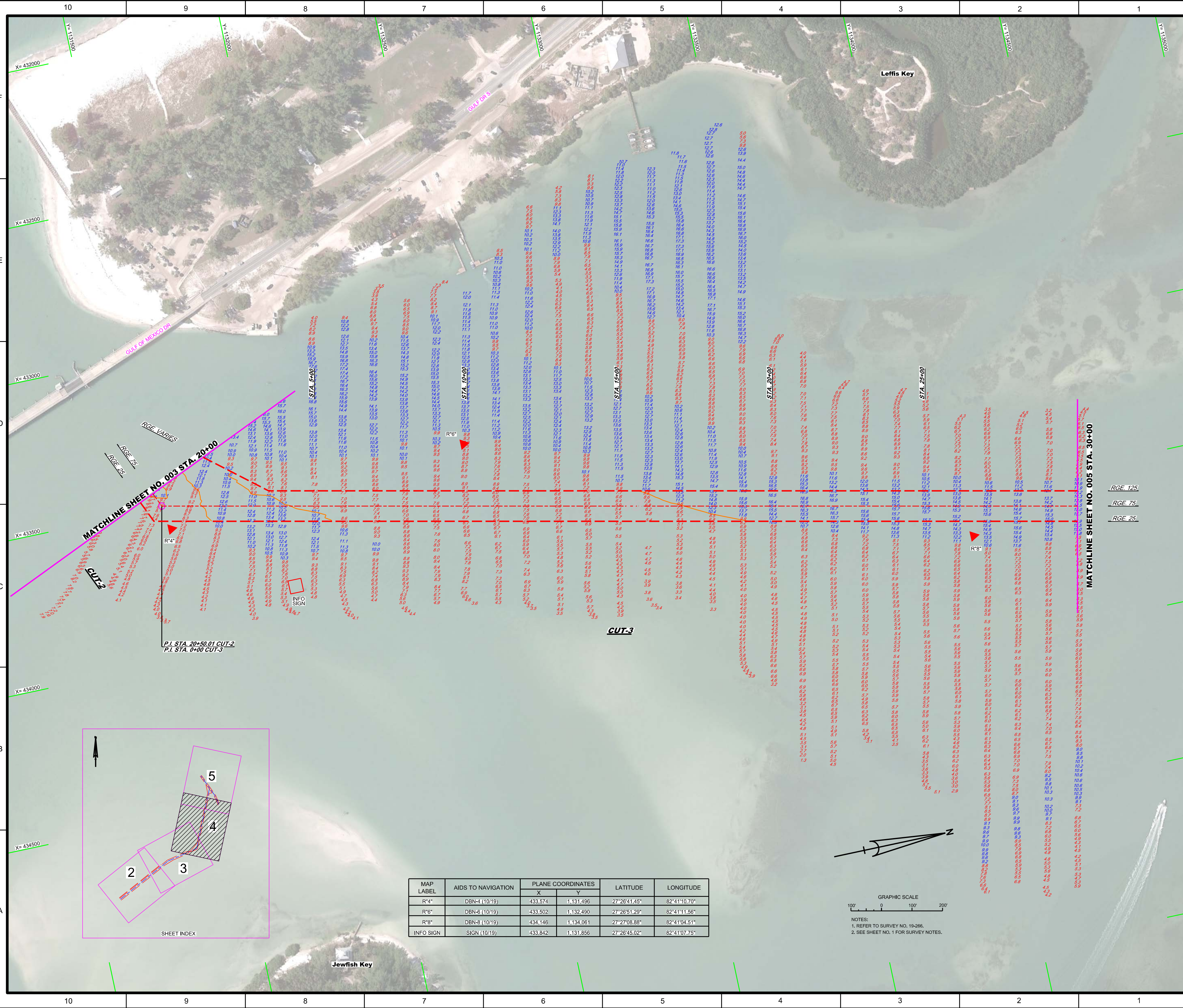
P.I. STA. 40+00.03 CUT-1  
P.I. STA. 0+00 CUT-2

MAP LABEL	AIDS TO NAVIGATION	PLANE COORDINATES		LATITUDE	LONGITUDE
		X	Y		
INFO SIGN	SIGN(10/19)	432.183	1131.8905	27°26'45.33"	82°41'15.06"



NOTES:  
1. REFER TO SURVEY NO. 19-266.  
2. SEE SHEET NO. 1 FOR SURVEY NOTES.



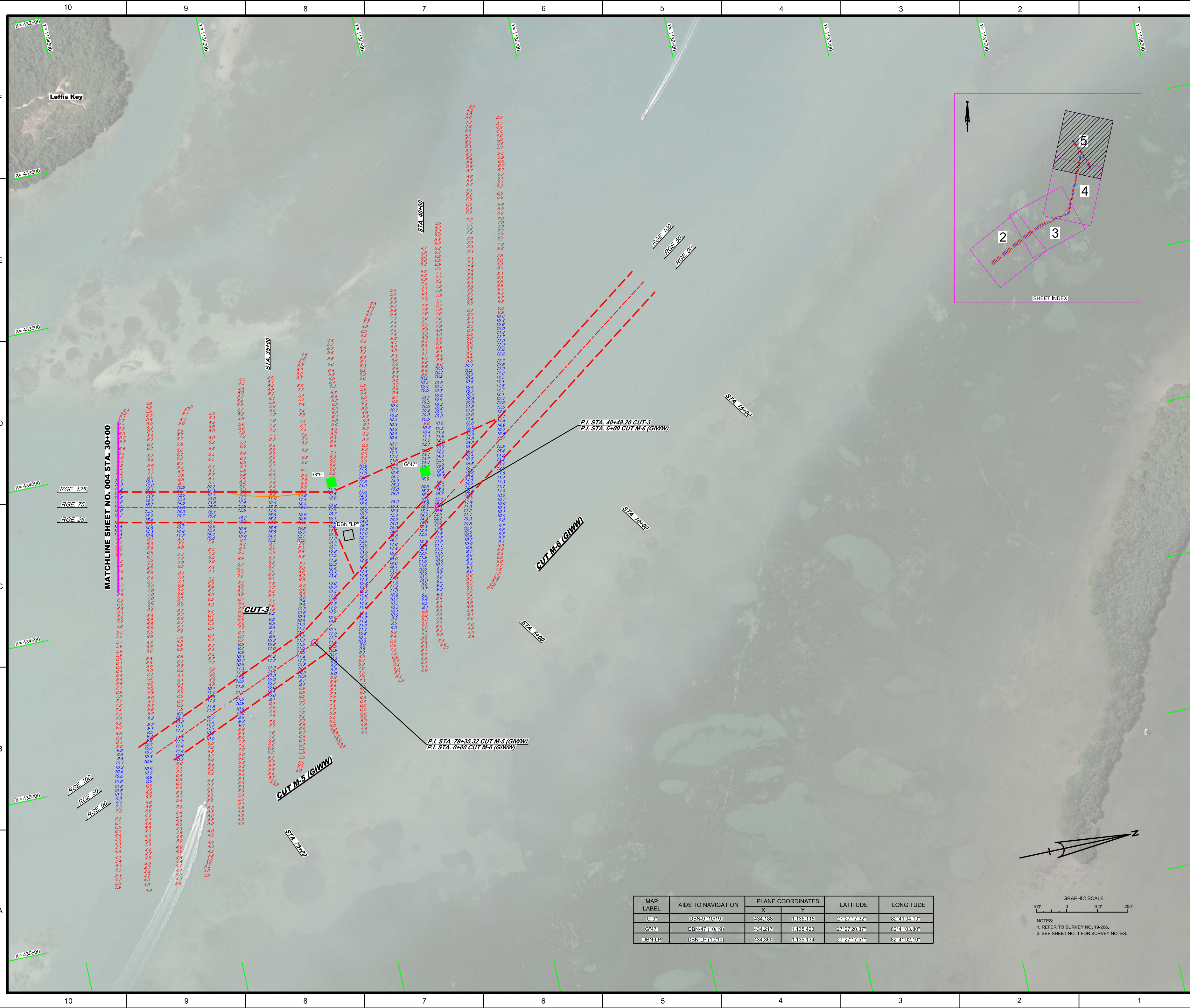
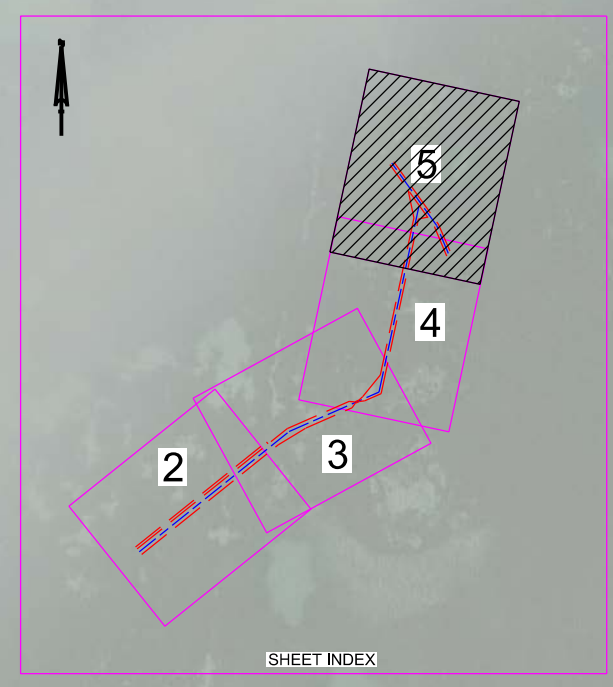


MAP LABEL	AIDS TO NAVIGATION	PLANE COORDINATES		LATITUDE	LONGITUDE
		X	Y		
R4"	DBN-4 (10/19)	433,574	1,131,496	27°26'41.45"	82°41'10.70"
R6"	DBN-6 (10/19)	433,502	1,132,490	27°26'51.29"	82°41'11.56"
R8"	DBN-8 (10/19)	434,146	1,134,061	27°27'08.88"	82°41'04.51"
INFO SIGN	SIGN (10/19)	433,842	1,131,856	27°26'45.02"	82°41'07.75"

GRAPHIC SCALE  
1" = 200'  
0 100' 200'

NOTES:  
1. REFER TO SURVEY NO. 19-266.  
2. SEE SHEET NO. 1 FOR SURVEY NOTES.





MAP LABEL	AIDS TO NAVIGATION	PLANE COORDINATES		LATITUDE	LONGITUDE
		X	Y		
G*9	DBN-9 (10/19)	434,188	1,135,115	27°27'17.32"	82°41'04.10"
G*47	DBN-47 (10/19)	434,217	1,135,243	27°27'20.83"	82°41'03.80"
DBN-LP	DBN-LP (10/19)	434,369	1,135,134	27°27'17.51"	82°41'02.10"

