

MAP LABEL	AIDS TO NAVIGATION	PLANE COORDINATES		LATITUDE	LONGITUDE
		X	Y		
G"17"	LT. BUOY-17 (09/19)	518.464	2,200.656	30°23'10.40"	81°26'12.21"
R"18"	LT. BUOY-18 (09/19)	517.644	2,201.368	30°23'17.42"	81°26'21.60"
R"20"	LT. BUOY-20 (09/19)	516.670	2,200.059	30°23'04.43"	81°26'32.67"



NOTES:
 1. REFER TO SURVEY NO. 19-243.
 2. SEE SHEET NO. 1 FOR SURVEY NOTES.

US Army Corps of Engineers
 Jacksonville District

SAFETY ON THIS JOB DEPENDS ON YOU

DEPARTMENT OF THE ARMY
 JACKSONVILLE DISTRICT, CORPS OF ENGINEERS
 JACKSONVILLE, FLORIDA

4th QUARTER EXAM SURVEY FY19
30, 34, 38, 40 & 42-FOOT PROJECT

STA. 5+00 CUT-8 THRU STA. 10+00 CUT-9
PLAN

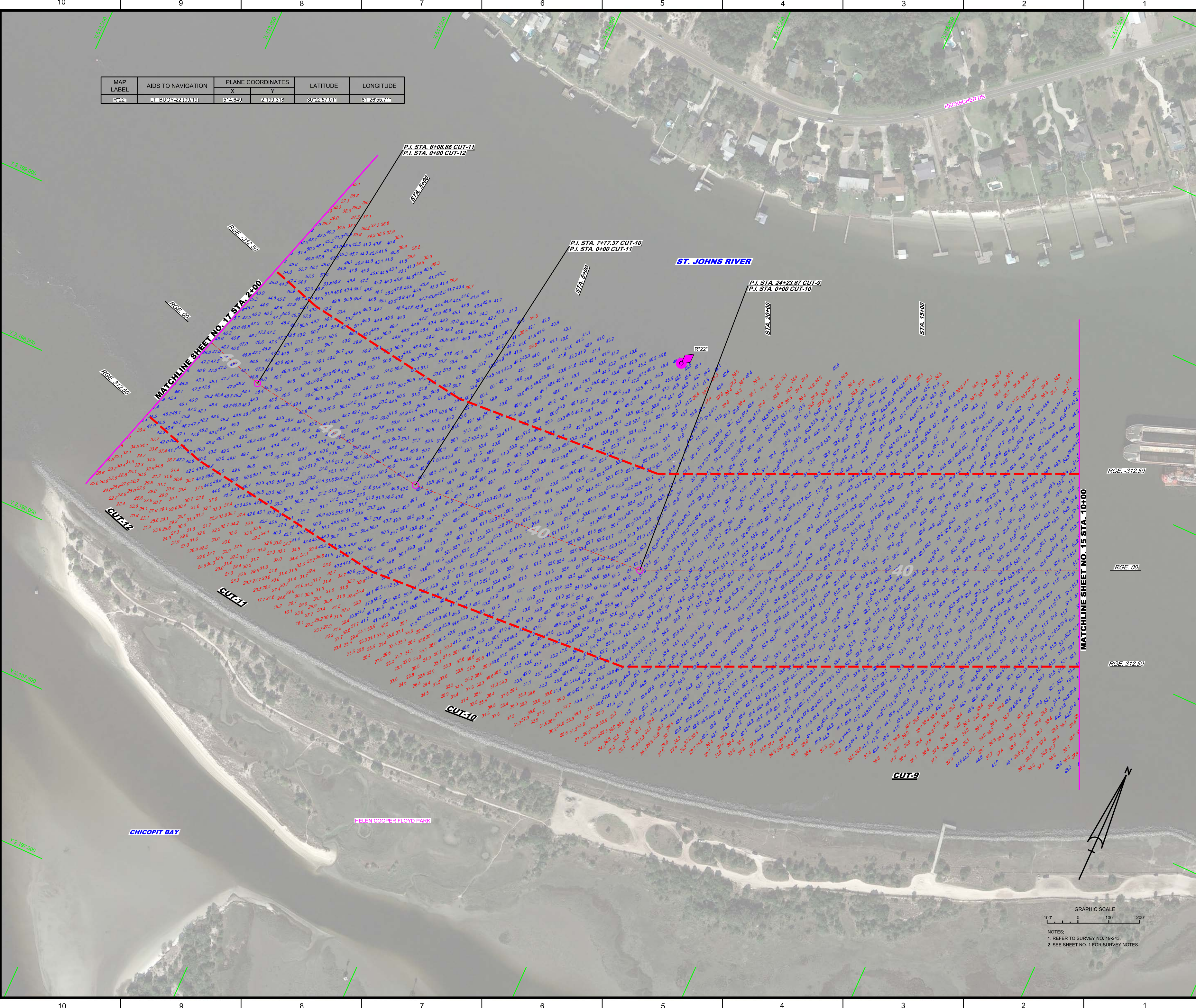
Scale: AS SHOWN

Drawing no.
11 / 32

SHEET 15 OF 57

MAP LABEL	AIDS TO NAVIGATION	PLANE COORDINATES		LATITUDE	LONGITUDE
		X	Y		
R22	LT. BUOY 22 (0919)	514,649	2,199,818	30°22'67.01"	81°28'55.71"

US Army Corps of Engineers
Jacksonville District
SAFETY ON THIS JOB
DEPENDS ON YOU



CHICOPIT BAY

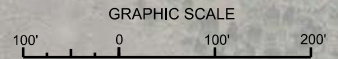
HELEN COOPER FLOYD PARK

ST. JOHNS RIVER

STA. 2+00

STA. 5+00

STA. 15+00



NOTES:
1. REFER TO SURVEY NO. 19-243.
2. SEE SHEET NO. 1 FOR SURVEY NOTES.

DEPARTMENT OF THE ARMY
JACKSONVILLE DISTRICT, CORPS OF ENGINEERS
JACKSONVILLE, FLORIDA

Check By: GHR
Designed By: WRM, ERM, JWG
Reviewed By: WRM, ERM, JWG
Approved By: JAWR, TFRB, WARD, JAWB
Issue Date: SEP 2019
Revision: 19-243-0101-01

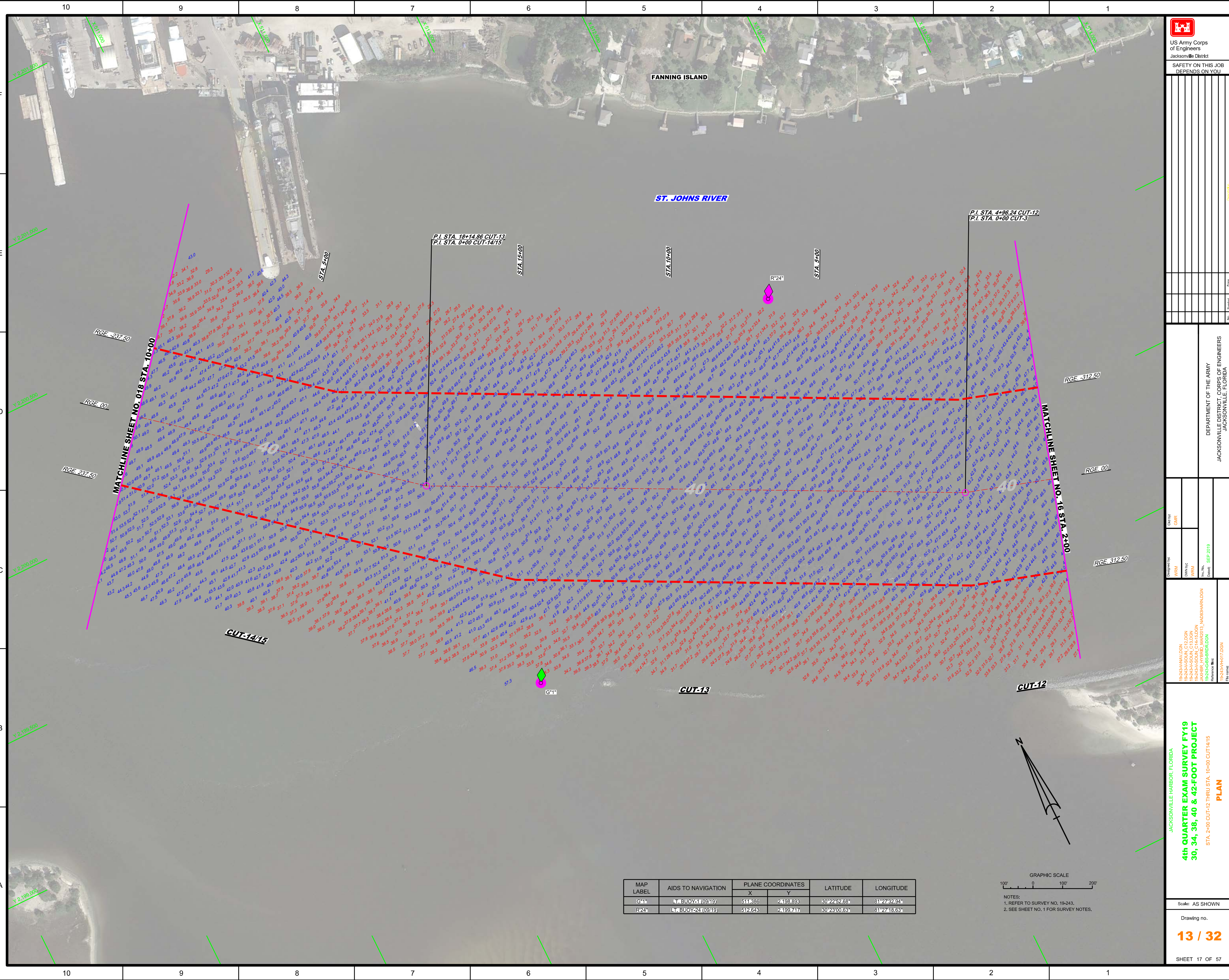
JACKSONVILLE HARBOR, FLORIDA
4th QUARTER EXAM SURVEY FY19
30, 34, 38, 40 & 42-FOOT PROJECT
STA. 10+00 CUT-9 THRU STA. 2+00 CUT-12
PLAN

Scale: AS SHOWN

Drawing no.

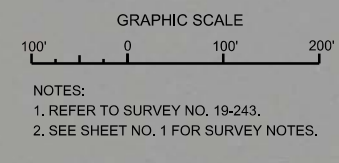
12 / 32

SHEET 16 OF 57

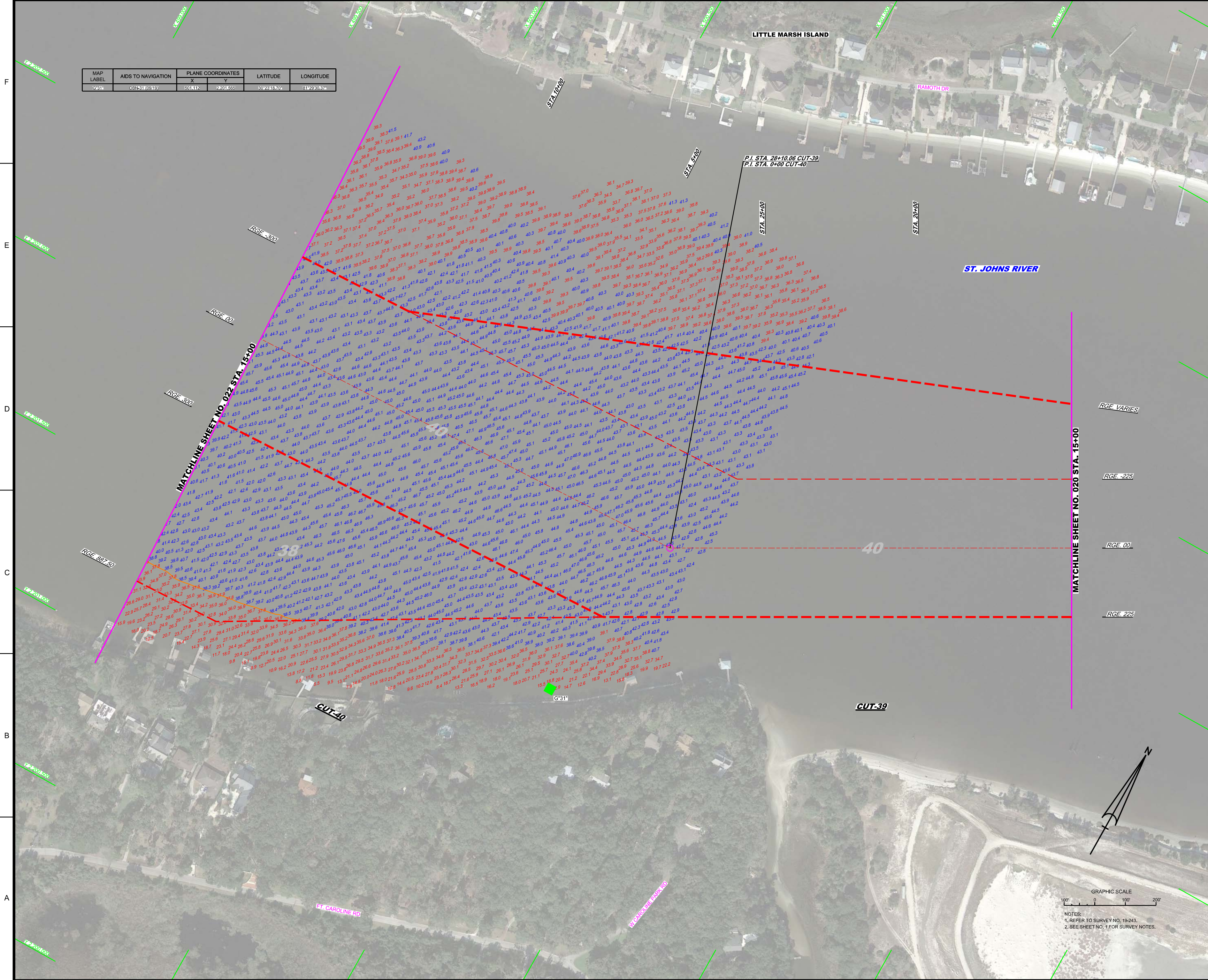


Designed by:	WRM
Checked by:	WRM
Drawn by:	WRM
Date:	SEP 2019

MAP LABEL	AIDS TO NAVIGATION	PLANE COORDINATES		LATITUDE	LONGITUDE
		X	Y		
G*11	LT BUOY 1 (09/19)	511,386	2,498,893	30°22'52.68"	81°27'32.94"
R*24	LT BUOY 24 (09/19)	512,643	2,499,747	30°23'00.63"	81°27'18.63"

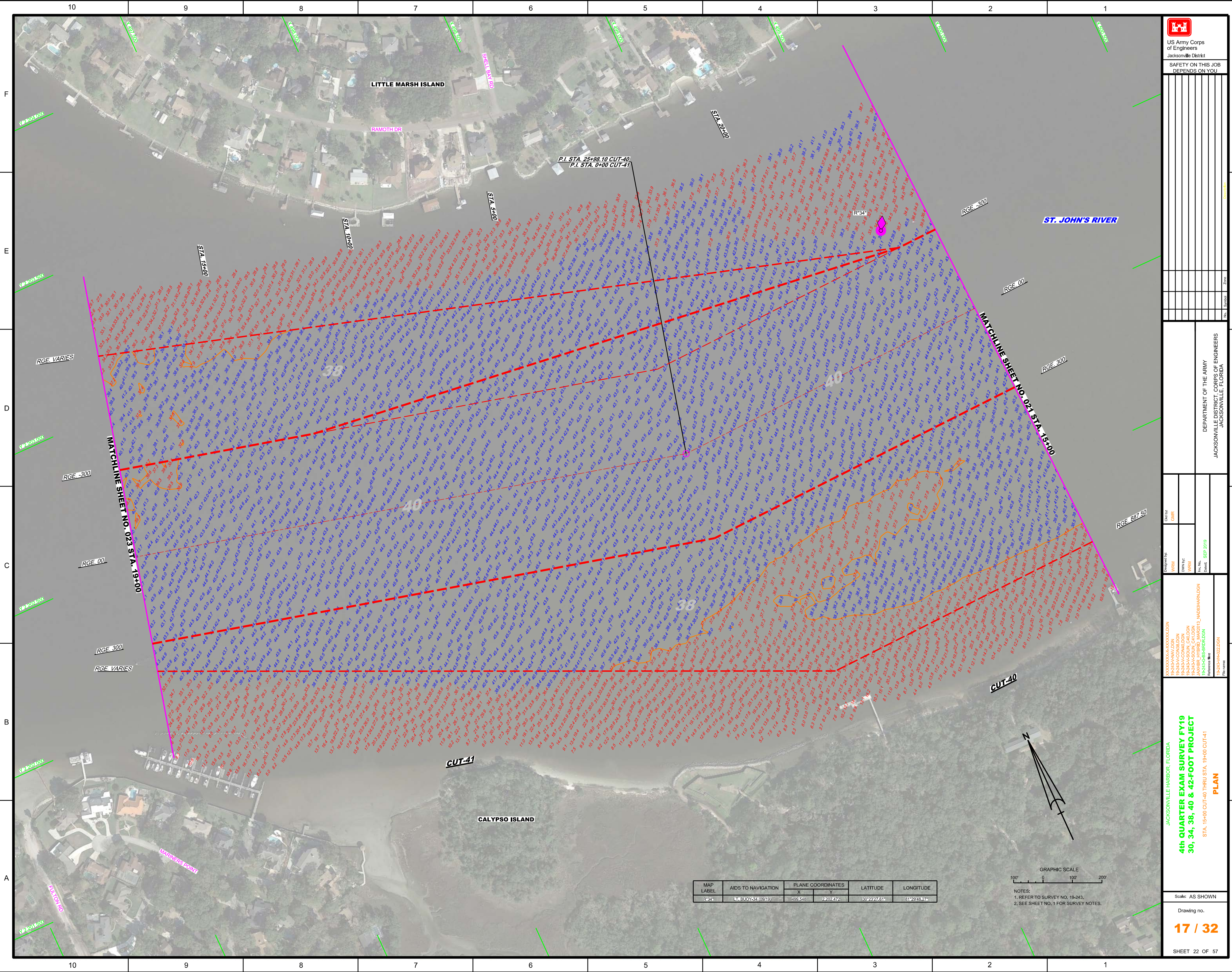



MAP LABEL	AIDS TO NAVIGATION	PLANE COORDINATES		LATITUDE	LONGITUDE
		X	Y		
G31*	DBN31 (09/19)	501,112	2821,565	30°23'18.70"	81°29'50.31"



NOTES:
 1. REFER TO SURVEY NO. 19-243.
 2. SEE SHEET NO. 1 FOR SURVEY NOTES.

DEPARTMENT OF THE ARMY JACKSONVILLE DISTRICT, CORPS OF ENGINEERS JACKSONVILLE, FLORIDA	
Checked by: GHR	Drawn by: WPM
Designed by: WPM	Date: SEP 2019
4th QUARTER EXAM SURVEY FY19 30, 34, 38, 40 & 42-FOOT PROJECT STA. 15+00 CUT-39 THRU STA. 15+00 CUT-40 PLAN	
Scale: AS SHOWN	Drawing no. 16 / 32
SHEET 21 OF 57	





 US Army Corps of Engineers
 Jacksonville District
 SAFETY ON THIS JOB
 DEPENDS ON YOU

Checked By:	GHR
Designed By:	WRM
Drawn By:	WRM
Reviewed By:	WRM
Date:	SEP 2019

JACKSONVILLE HARBOR, FLORIDA
4th QUARTER EXAM SURVEY FY19
30, 34, 38, 40 & 42-FOOT PROJECT
 STA. 15+00 CUT-40 THRU STA. 19+00 CUT-41
PLAN

Scale: AS SHOWN
 Drawing no.
17 / 32
 SHEET 22 OF 57

MAP LABEL	AIDS TO NAVIGATION	PLANE COORDINATES	LATITUDE	LONGITUDE	
R-34	LT BUOY-34 (08/19)	499.546	2.202472	30°23'27.61"	81°29'48.27"



NOTES:
 1. REFER TO SURVEY NO. 19-243.
 2. SEE SHEET NO. 1 FOR SURVEY NOTES.

MAP LABEL	AIDS TO NAVIGATION	PLANE COORDINATES		LATITUDE	LONGITUDE
		X	Y		
G-65	BUOY-35 (03-19)	459827	2202164	30°23'23.5"	81°02'21.6"
R-36	C-36 (03-19)	459822	2202226	30°23'33.5"	81°02'31.4"
G-37	BUOY-37 (03-19)	459821	2202230	30°23'28.0"	81°02'31.2"

BLOUNT ISLAND

BACK RIVER

ST. JOHNS RIVER

CALYPSO ISLAND

CUT-42

CUT-41

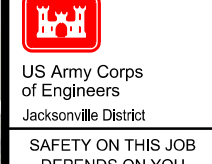
MATCHLINE SHEET NO. 050 STA. 14+00

MATCHLINE SHEET NO. 024 STA. 13+00

MATCHLINE SHEET NO. 022 STA. 19+00

GRAPHIC SCALE
100' 0 100' 200'

NOTES:
1. REFER TO SURVEY NO. 19-243.
2. SEE SHEET NO. 1 FOR SURVEY NOTES.



US Army Corps of Engineers
Jacksonville District

SAFETY ON THIS JOB
DEPENDS ON YOU

DEPARTMENT OF THE ARMY
JACKSONVILLE DISTRICT, CORPS OF ENGINEERS
JACKSONVILLE, FLORIDA

4th QUARTER EXAM SURVEY FY19
30, 34, 38, 40 & 42-FOOT PROJECT
STA. 19+00 CUT-41 THRU STA 13+00 CUT-42 & STA. 0+00 THRU STA. 14+00 CUT-4A

JACKSONVILLE HARBOR, FLORIDA
PLAN

Scale: AS SHOWN

Drawing no.

18 / 32

SHEET 23 OF 57

10 9 8 7 6 5 4 3 2 1

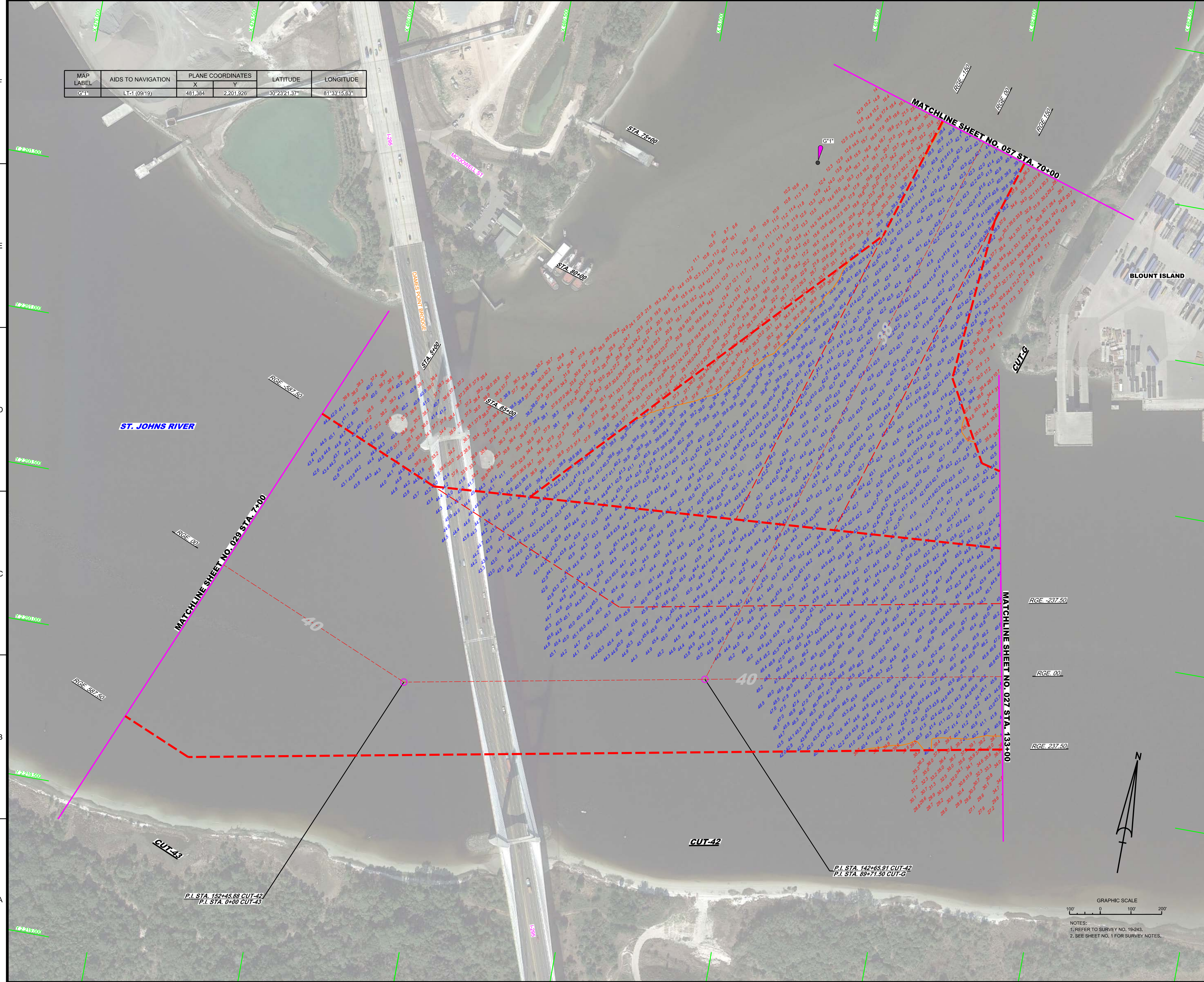
F
E
D
C
B
A

MAP LABEL	AIDS TO NAVIGATION	PLANE COORDINATES		LATITUDE	LONGITUDE
		X	Y		
G-1*	LT-1 (09/19)	481,384	2,201,926	30°23'21.37"	81°33'15.63"

US Army Corps of Engineers
Jacksonville District

SAFETY ON THIS JOB
DEPENDS ON YOU

DEPARTMENT OF THE ARMY
JACKSONVILLE DISTRICT, CORPS OF ENGINEERS
JACKSONVILLE, FLORIDA



MATCHLINE SHEET NO. 029 STA. 7+00

MATCHLINE SHEET NO. 057 STA. 70+00

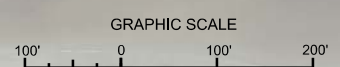
RGE. -237.50

RGE. 00.

RGE. 237.50

P.I. STA. 152+45.88 CUT-42
P.I. STA. 0+00 CUT-43

P.I. STA. 142+65.91 CUT-42
P.I. STA. 89+71.50 CUT-G



NOTES:
1. REFER TO SURVEY NO. 19-243.
2. SEE SHEET NO. 1 FOR SURVEY NOTES.

4th QUARTER EXAM SURVEY FY19
30, 34, 38, 40 & 42-FOOT PROJECT
STA. 133+00 CUT-42 THRU STA. 7+00 CUT-43 AND
STA. 70+00 THRU STA. 68+71.50 CUT-G
PLAN

Scale: AS SHOWN

Drawing no.
20 / 32

SHEET 28 OF 57