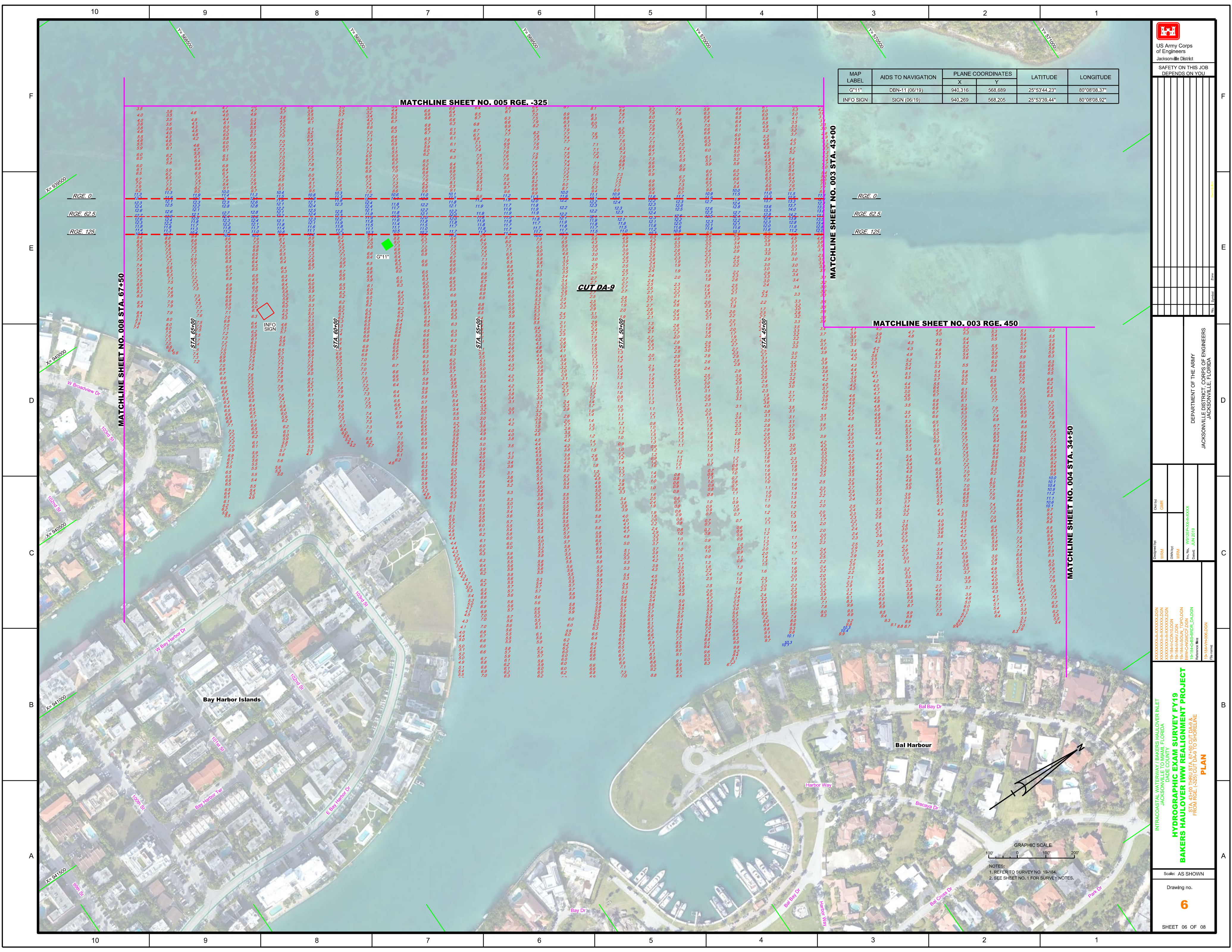


NOTES:
1. REFER TO SURVEY NO. 19-184.
2. SEE SHEET NO. 1 FOR SURVEY NOTES.



MAP LABEL	AIDS TO NAVIGATION	PLANE COORDINATES		LATITUDE	LONGITUDE
		X	Y		
G*11	DBN-11 (06/19)	940,316	568,689	25°53'44.23"	80°08'08.37"
INFO SIGN	SIGN (06/19)	940,269	568,205	25°53'39.44"	80°08'08.92"

MATCHLINE SHEET NO. 005 RGE. -325

MATCHLINE SHEET NO. 003 STA. 43+00

MATCHLINE SHEET NO. 003 RGE. 450

MATCHLINE SHEET NO. 004 STA. 34+50

CUT DA-9

MATCHLINE SHEET NO. 008 STA. 67+50

US Army Corps of Engineers
Jacksonville District

SAFETY ON THIS JOB DEPENDS ON YOU	
<p>Checked by: GHR</p> <p>Designed by: WRM</p> <p>Drawn by: WRM</p> <p>File No: W02255-000-0004</p> <p>Contract: JUN 2019</p>	<p>DEPARTMENT OF THE ARMY</p> <p>JACKSONVILLE DISTRICT CORPS OF ENGINEERS</p> <p>JACKSONVILLE, FLORIDA</p>
<p>INTRACOASTAL WATERWAY / BAKERS HAULOVER INLET JACKSONVILLE TO MIAMI, FLORIDA DADE COUNTY BAKERS HAULOVER IWW REALIGNMENT PROJECT HYDROGRAPHIC EXAM SURVEY FY19 STA. 43+00 THRU STA. 67+50 CUT DA-9 FROM RGE. -325 TO SHORELINE PLAN</p>	
<p>Scale: AS SHOWN</p> <p>Drawing No. 6</p> <p>SHEET 06 OF 08</p>	



NOTES:
1. REFER TO SURVEY NO. 19-184.
2. SEE SHEET NO. 1 FOR SURVEY NOTES.

