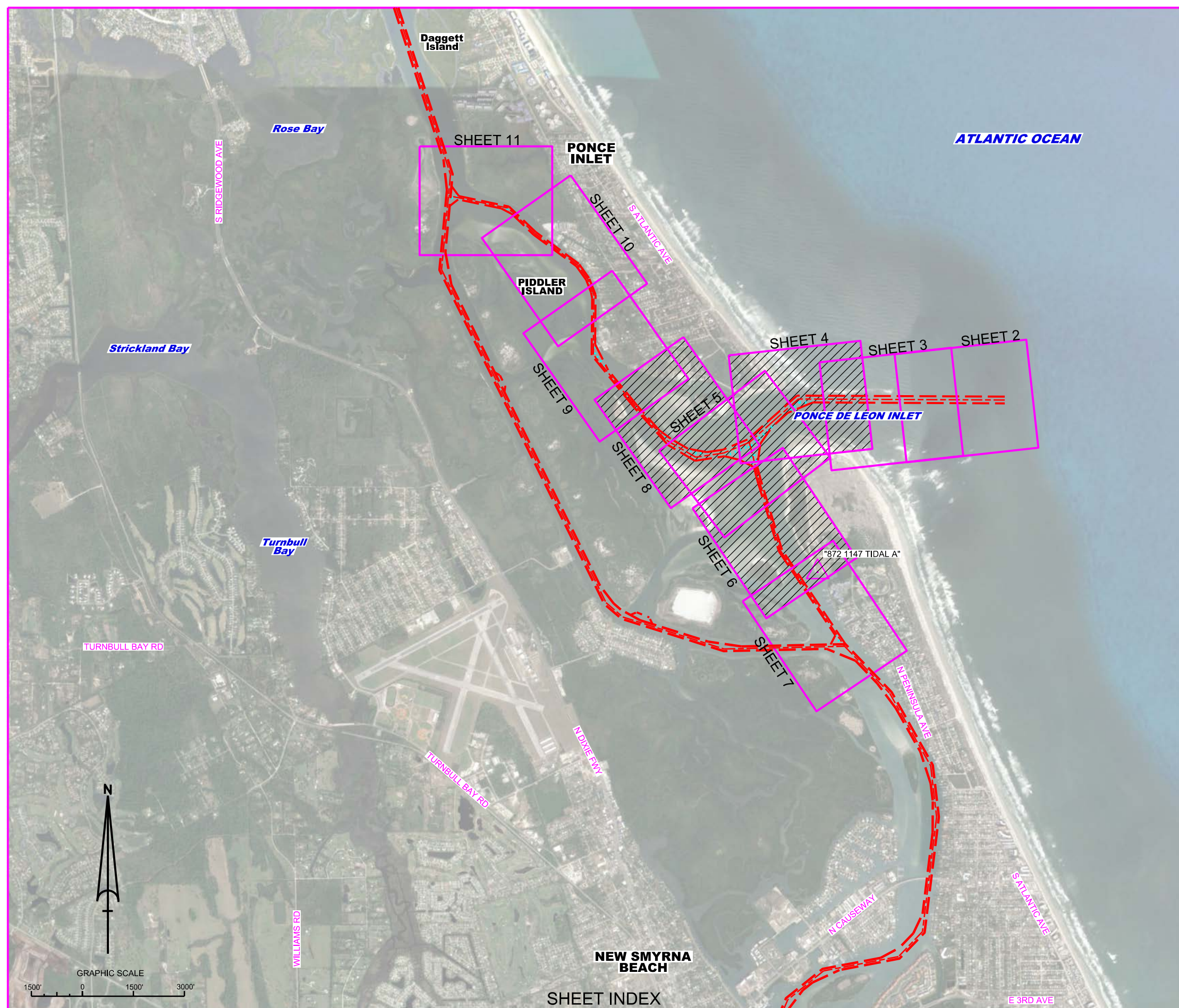


# PONCE DE LEON INLET VOLUSIA COUNTY, FLORIDA EMERGENCY EXAMINATION SURVEY FY19 7, 12 AND 15-FOOT PROJECT



### SURVEY NOTES

- REFER TO SURVEY NO. 19-153.
  - TIDAL REDUCTIONS WERE OBTAINED UTILIZING A REAL-TIME KINEMATIC (RTK) GPS AND REFERENCED TO MEAN LOWER LOW WATER (MLLW). KTD FILE NAME IS: "VOLUSIA-BREVARD (W-O\_CANAVERALHBR\_2016 05 06.KTD)".
  - ALL ELEVATIONS ARE BELOW THE CHART DATUM UNLESS PRECEDED BY A (+) SIGN.
  - PLANE COORDINATES ARE BASED ON THE TRANSVERSE MERCATOR PROJECTION FOR THE EAST ZONE OF FLORIDA AND REFERENCED TO NORTH AMERICAN DATUM OF 1983 (NAD83).
  - ALL STATIONING REFERS TO THE CENTERLINE OF THE CHANNEL.
  - THIS SURVEY WAS PERFORMED USING REAL-TIME KINEMATIC (RTK) GPS POSITIONING WITH THE FOLLOWING REFERENCE BASE LOCATION:  
  
REFERENCE BASE LOCATED AT "872 1147 TIDAL A" (OPUS PID: DK6692)  
  
TIDE STAFF LOCATED FROM "872 1147 TIDAL 1" (NGS PID: AQ1522)
  - DEPTHS DEPICTED BY THIS SURVEY ARE REFERENCED TO MLLW, TIDAL EPOCH 1983-2001 AS REPORTED BY THE NATIONAL OCEANIC AND ATMOSPHERIC ADMINISTRATION (NOAA). NOAA'S VDATUM MODEL WAS USED AND CALIBRATED TO THE PUBLISHED MLLW HEIGHTS OF THE BENCHMARKS ASSOCIATED WITH THE TIDE GAGE SITES SPECIFIED BELOW:  
  
NOAA TIDAL STATION 872-1147 TIDAL A (OPUS PID: DK6692) FOR ALL CUTS.  
  
VERTICAL MEASUREMENTS WERE MADE USING A ROSS SMART SOUNDER MODEL 835C WITH A DUAL-FREQUENCY (28/200 KHZ) SINGLE-BEAM TRANSDUCER. ALL SOUNDINGS SHOWN ARE IN HIGH FREQUENCY.
- | VESSEL | DATE OF SURVEY | LOCATION                       |
|--------|----------------|--------------------------------|
| SB-36  | 02 APR 2019    | CUT-2A, CUT-3A, CUT-3N, CUT-4N |
| SB-36  | 03 APR 2019    | CUT-1S, CUT-2S, CUT-5N, CUT-6N |
- AIDS TO NAVIGATION WERE LOCATED DURING THIS SURVEY.
  - THE INFORMATION DEPICTED ON THIS MAP REPRESENTS THE RESULTS OF SURVEYS MADE ON THE DATES INDICATED ABOVE AND CAN ONLY BE CONSIDERED AS INDICATING THE GENERAL CONDITIONS AT THAT TIME. THIS CHART IS SOLELY FOR THE DISTRIBUTION OF AVAILABLE DEPTHS AT THE TIME OF THE SURVEY.
  - SURVEY ACCURACY PERFORMANCE STANDARDS, QUALITY CONTROL, AND QUALITY ASSURANCE REQUIREMENTS WERE FOLLOWED DURING THIS SURVEY IN ACCORDANCE WITH USACE EM 1110-2-1003, HYDROGRAPHIC SURVEYING, 30 NOV 2013.

LEGEND	
	MONUMENT
	LIGHTED BEACON
	GREEN DAYBEACON
	RED DAYBEACON
	RED LIGHTED BUOY
	GREEN LIGHTED BUOY
	CAN BUOY
	NUN BUOY
	TIDE STAFF
	PROJECT DEPTH

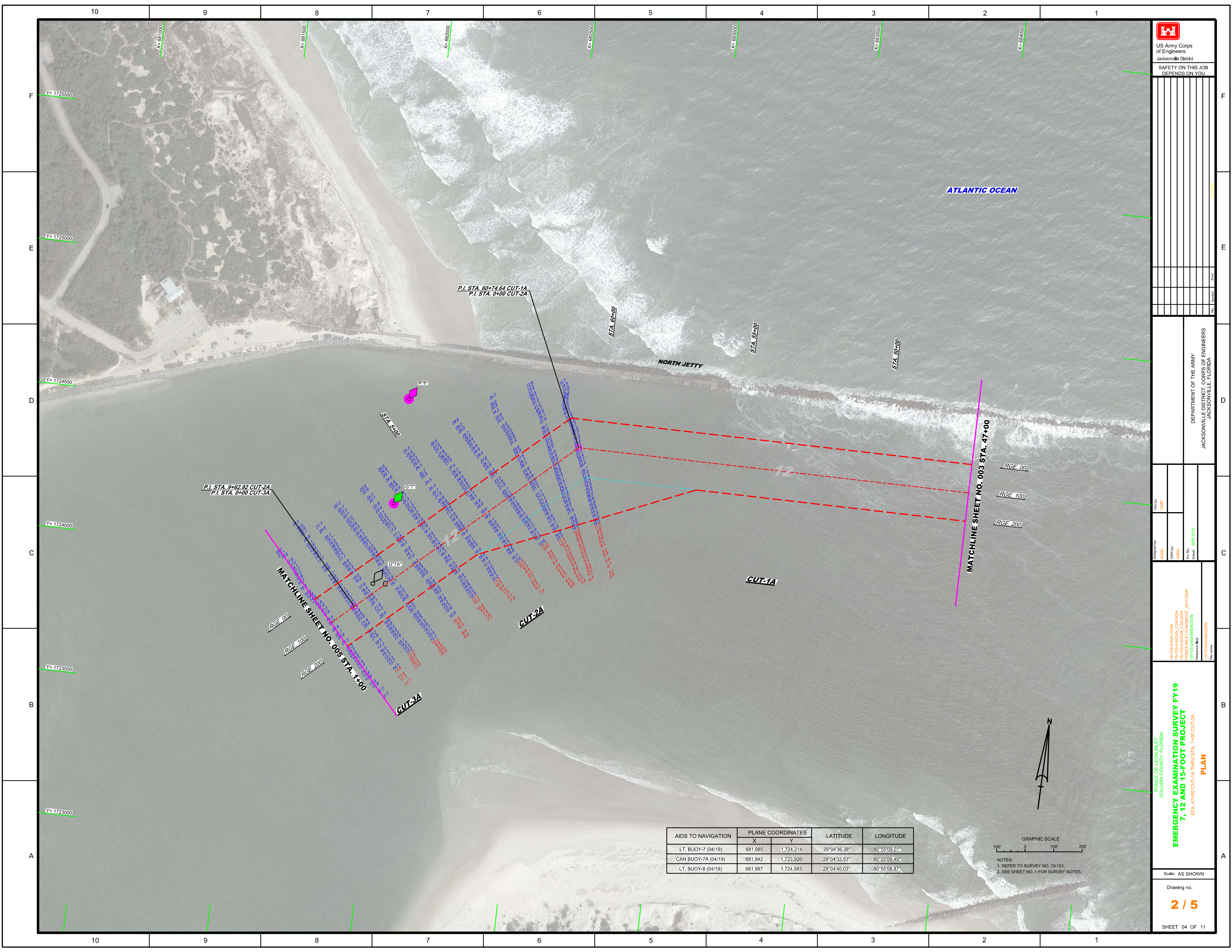
US Army Corps of Engineers  
Jacksonville District  
SAFETY ON THIS JOB  
DEPENDS ON YOU


DEPARTMENT OF THE ARMY  
JACKSONVILLE DISTRICT, CORPS OF ENGINEERS  
JACKSONVILLE, FLORIDA

EMERGENCY EXAMINATION SURVEY FY19  
7, 12 AND 15-FOOT PROJECT  
INDEX, LOCATION AND VICINITY  
MAP

Scale: AS SHOWN  
Drawing no.  
**1 / 5**  
SHEET 01 OF 11





  
 US Army Corps of Engineers  
 Jacksonville District  
 SAFETY ON THIS JOB  
 DEPENDS ON YOU

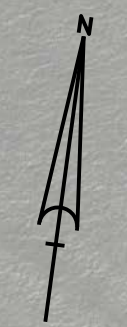
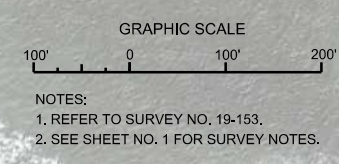
DEPARTMENT OF THE ARMY  
 JACKSONVILLE DISTRICT, CORPS OF ENGINEERS  
 JACKSONVILLE, FLORIDA

Checked By: GHR  
 Designed By: WRM  
 Drawn By: WRM  
 File No: P-153A-001A-CADON  
 P-153A-001A-CADON  
 P-153A-001A-CADON  
 P-153A-001A-CADON  
 Reference Map: P-153A-001A-CADON

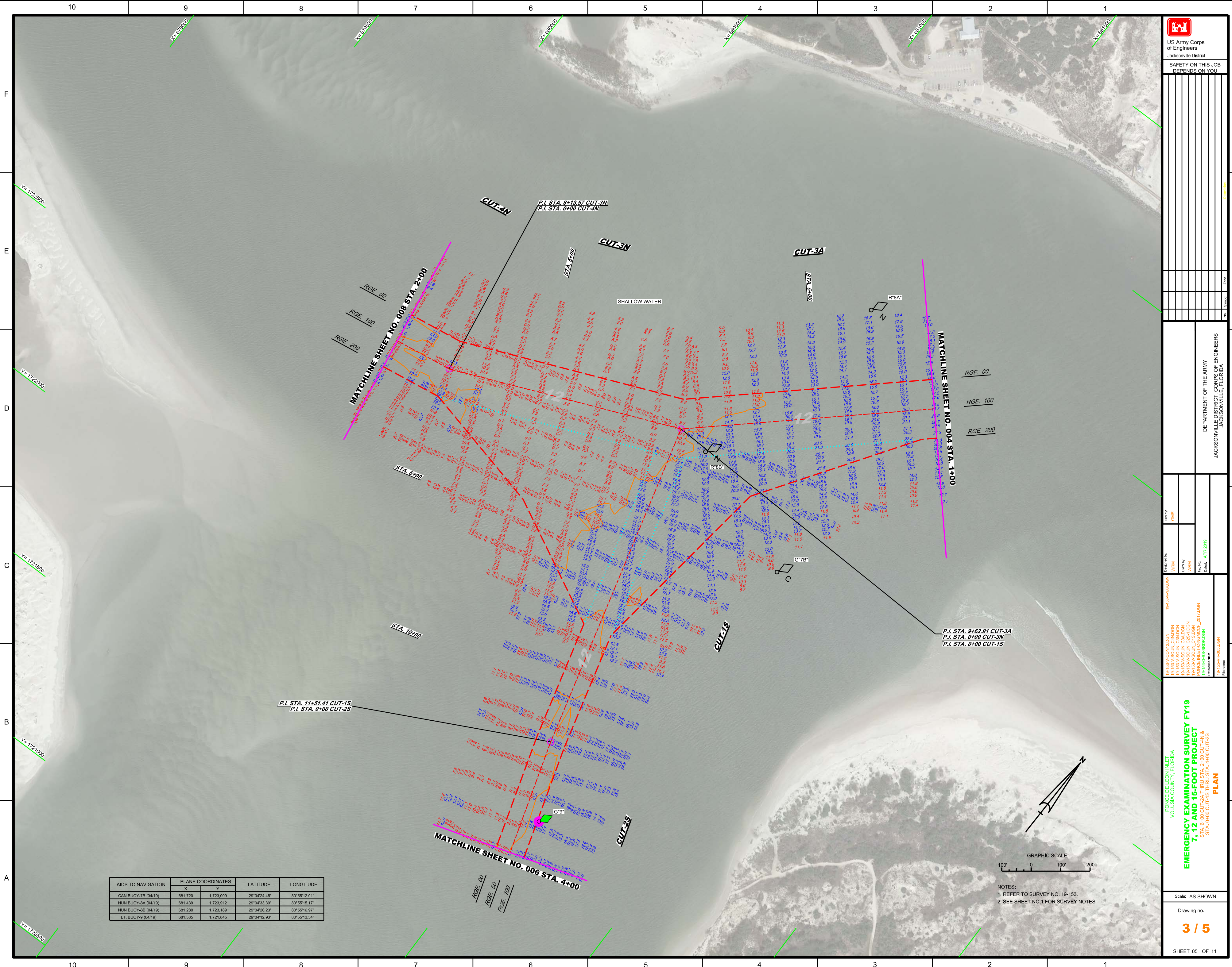
P-153A-001A-CADON  
 P-153A-001A-CADON  
 P-153A-001A-CADON  
 P-153A-001A-CADON  
 Reference Map: P-153A-001A-CADON

Scale: AS SHOWN  
 Drawing no.  
**2 / 5**  
 SHEET 04 OF 11

AIDS TO NAVIGATION	PLANE COORDINATES		LATITUDE	LONGITUDE
	X	Y		
LT. BUOY-7 (04/19)	681,985	1,724,214	29°04'36.38"	80°55'09.01"
CAN BUOY-7A (04/19)	681,942	1,723,926	29°04'33.53"	80°55'09.49"
LT. BUOY-8 (04/19)	681,997	1,724,583	29°04'40.03"	80°55'08.87"





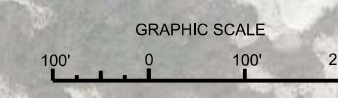


P.I. STA. 11+51.41 CUT-1S  
P.I. STA. 0+00 CUT-2S

P.I. STA. 8+13.57 CUT-3N  
P.I. STA. 0+00 CUT-4N

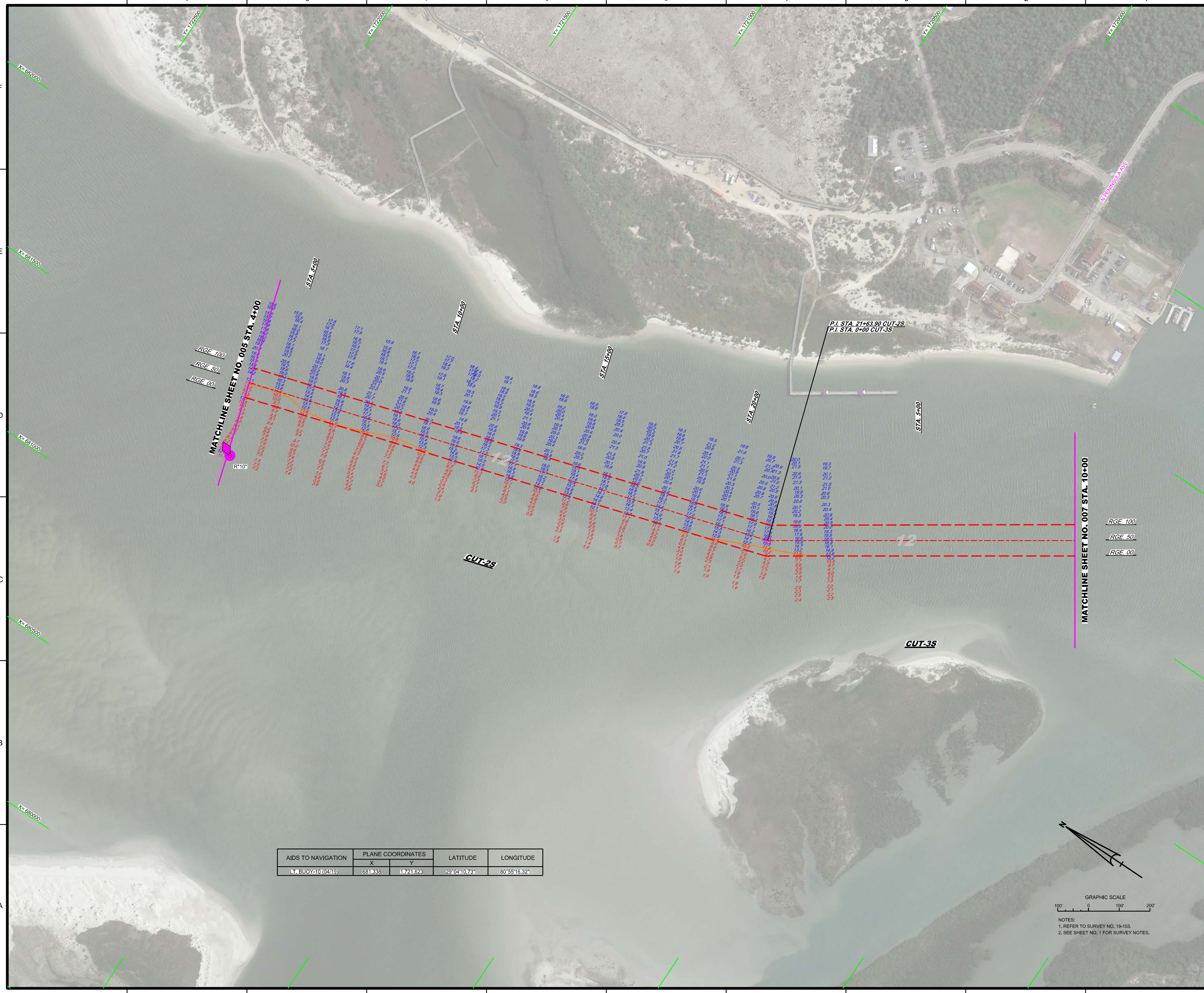
P.I. STA. 9+62.91 CUT-3A  
P.I. STA. 0+00 CUT-3N  
P.I. STA. 0+00 CUT-1S

AIDS TO NAVIGATION	PLANE COORDINATES		LATITUDE	LONGITUDE
	X	Y		
CAN BUOY-7B (04/19)	681.720	1,723.009	29°04'24.45"	80°55'12.01"
NUN BUOY-5A (04/19)	681.439	1,723.912	29°04'33.39"	80°55'15.17"
NUN BUOY-3B (04/19)	681.280	1,723.189	29°04'28.23"	80°55'16.97"
L.T. BUOY-9 (04/19)	681.585	1,721.845	29°04'12.93"	80°55'13.54"

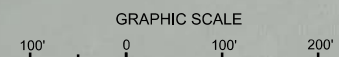


NOTES:  
1. REFER TO SURVEY NO. 19-153.  
2. SEE SHEET NO.1 FOR SURVEY NOTES.



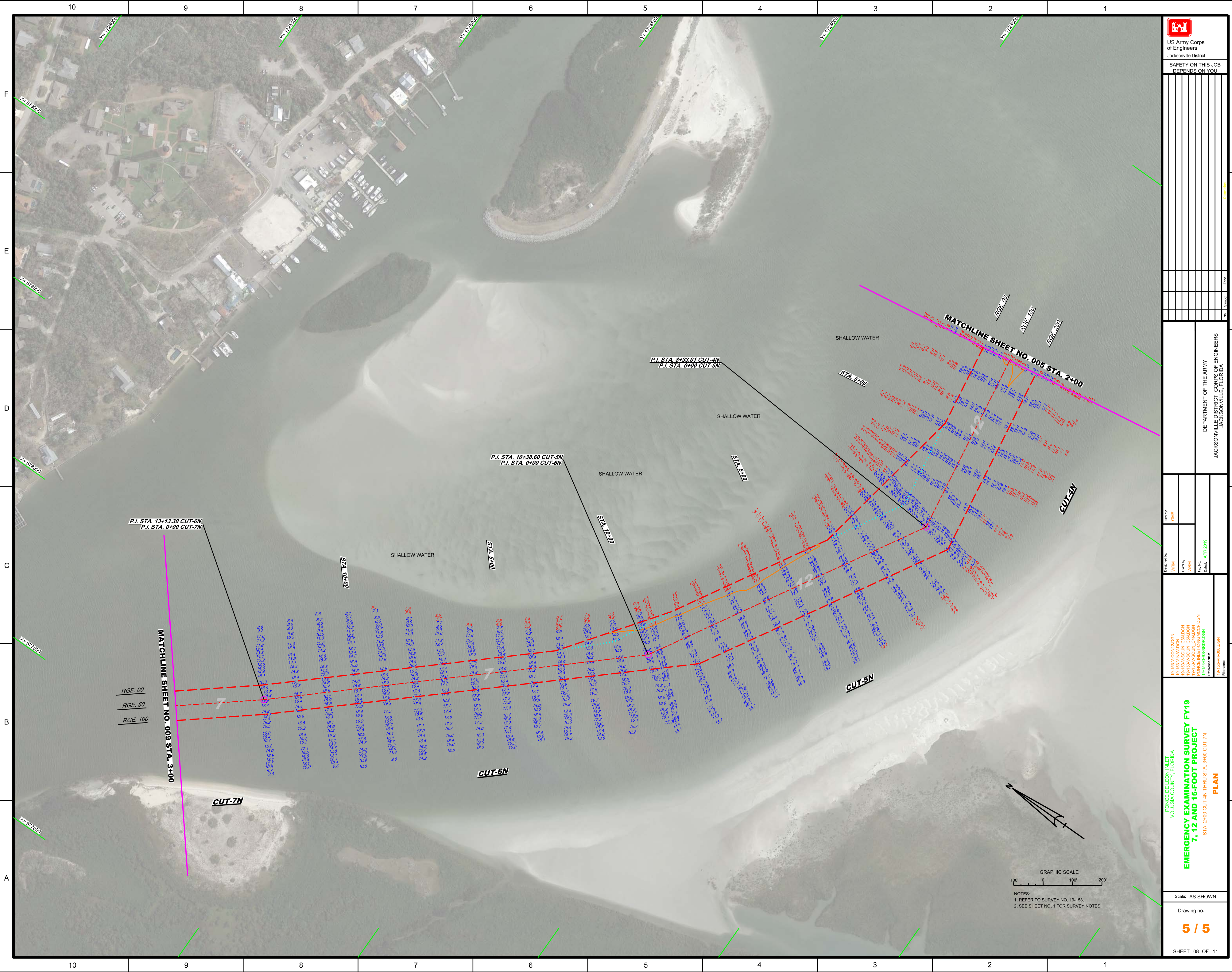



AIDS TO NAVIGATION	PLANE COORDINATES		LATITUDE	LONGITUDE
	X	Y		
LT. BUOY-10 (0419)	681,338	1721,623	29°04'10.73"	80°55'16.32"



NOTES:  
1. REFER TO SURVEY NO. 19-153.  
2. SEE SHEET NO. 1 FOR SURVEY NOTES.





 US Army Corps of Engineers Jacksonville District			
		SAFETY ON THIS JOB DEPENDS ON YOU	
Drawn by:	Checked by:		

DEPARTMENT OF THE ARMY  
 JACKSONVILLE DISTRICT, CORPS OF ENGINEERS  
 JACKSONVILLE, FLORIDA

Contract No. 14-ES-354-0012-DDN 14-ES-354-0013-DDN 14-ES-354-0014-DDN 14-ES-354-0015-DDN 14-ES-354-0016-DDN 14-ES-354-0017-DDN 14-ES-354-0018-DDN 14-ES-354-0019-DDN 14-ES-354-0020-DDN 14-ES-354-0021-DDN 14-ES-354-0022-DDN 14-ES-354-0023-DDN 14-ES-354-0024-DDN 14-ES-354-0025-DDN 14-ES-354-0026-DDN 14-ES-354-0027-DDN 14-ES-354-0028-DDN 14-ES-354-0029-DDN 14-ES-354-0030-DDN	Title APR 2019
--	-------------------

**EMERGENCY EXAMINATION SURVEY FY19**  
**7, 12 AND 15-FOOT PROJECT**  
 STA 2+00 CUT-4N THRU STA 3+00 CUT-7N  
**PLAN**

GRAPHIC SCALE  
 100' 0 100' 200'  
 NOTES:  
 1. REFER TO SURVEY NO. 18-153.  
 2. SEE SHEET NO. 1 FOR SURVEY NOTES.

Scale: AS SHOWN  
 Drawing no. **5 / 5**  
 SHEET 08 OF 11