

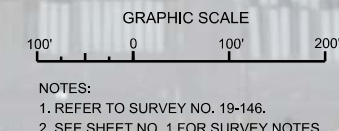
Bahia de Puerto Nuevo


PUERTO NUEVO CHANNEL

MATCHLINE SHEET NO. 011 STA. 17+00

MATCHLINE SHEET NO. 009 STA. 47+00

MAP LABEL	AIDS TO NAVIGATION	PLANE COORDINATES		LATITUDE	LONGITUDE
		X	Y		
G-3*	LT. BUOY-3 (05/19)	772,753	874,994	18°26'08.39"	66°05'49.05"





US Army Corps of Engineers
Jacksonville District

**SAFETY ON THIS JOB
DEPENDS ON YOU**

DEPARTMENT OF THE ARMY
JACKSONVILLE DISTRICT, CORPS OF ENGINEERS
JACKSONVILLE, FLORIDA

San Juan Harbor
San Juan, Puerto Rico

**HYDROGRAPHIC EXAM SURVEY FY19
30 THRU 56-FOOT PROJECT**

STA. 17+00 THRU STA. 47+00 PUERTO NUEVO CHANNEL

PLAN

Scale: AS SHOWN

Drawing no.
10


SHEET 10 OF 17

MAP LABEL	AIDS TO NAVIGATION	PLANE COORDINATES		LATITUDE	LONGITUDE
		X	Y		
R-6*	LT. BUOY-8 (05/19)	768,504	875,509	18°26'13.56"	66°06'33.17"
G-7*	LT. BUOY-7 (05/19)	768,988	874,783	18°26'05.87"	66°06'28.16"
G-9*	LT. BUOY-9 (05/19)	769,841	878,813	18°25'56.73"	66°06'19.32"

MAP LABEL	AIDS TO NAVIGATION	PLANE COORDINATES		LATITUDE	LONGITUDE
		X	Y		
R-6*	LT. BUOY-8 (05/19)	768,504	875,509	18°26'13.56"	66°06'33.17"
G-7*	LT. BUOY-7 (05/19)	768,988	874,783	18°26'05.87"	66°06'28.16"
G-9*	LT. BUOY-9 (05/19)	769,841	878,813	18°25'56.73"	66°06'19.32"

GRAPHIC SCALE
1" = 100'

NOTES:
1. REFER TO SURVEY NO. 19-146.
2. SEE SHEET NO. 1 FOR SURVEY NOTES.



US Army Corps of Engineers
Jacksonville District

**SAFETY ON THIS JOB
DEPENDS ON YOU**

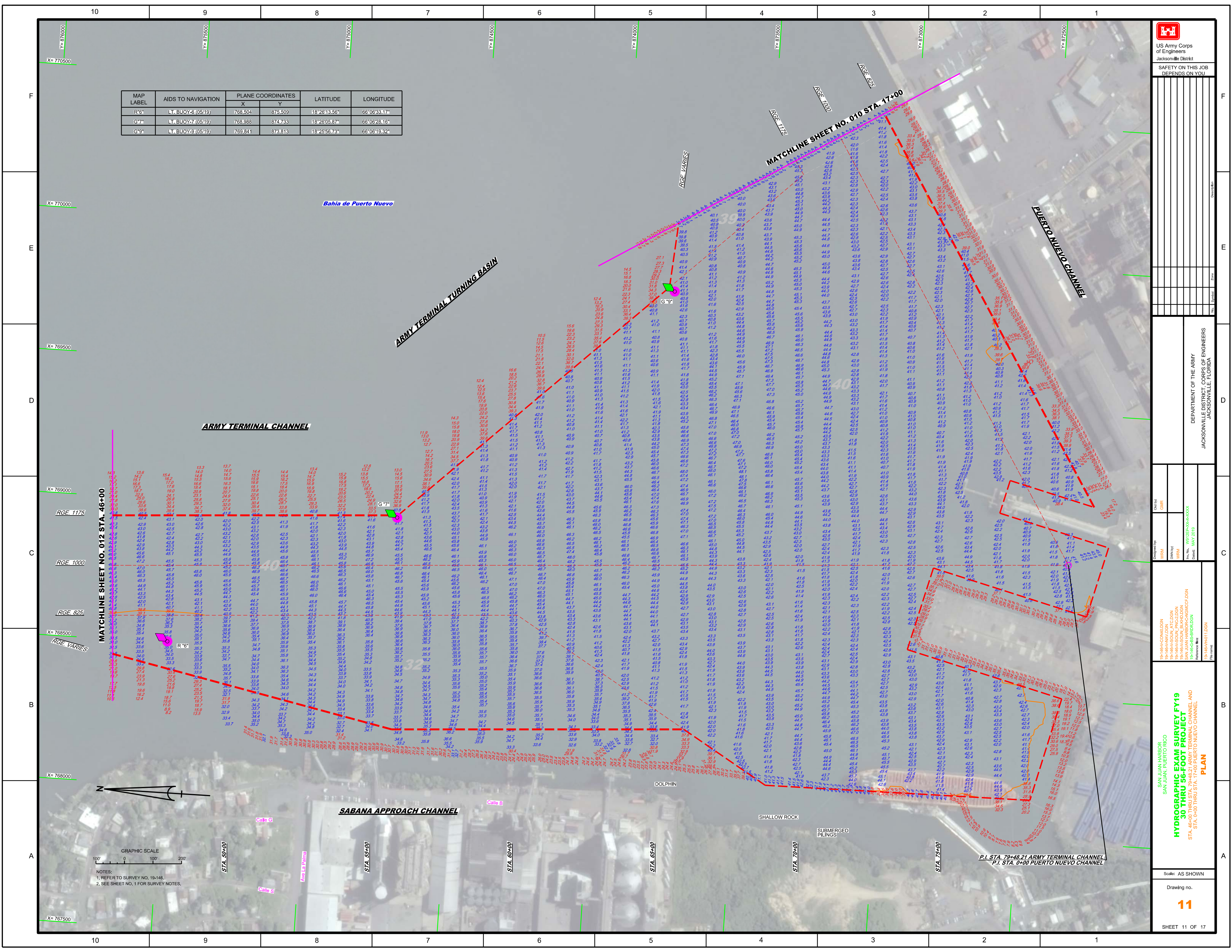
DEPARTMENT OF THE ARMY
JACKSONVILLE DISTRICT, CORPS OF ENGINEERS
JACKSONVILLE, FLORIDA

Project: **HYDROGRAPHIC EXAM PROJECT FY19**
30 THRU 56-FOOT PROJECT
STA. 46+00 THRU STA. 79+82.1 ARMY TERMINAL CHANNEL AND
STA. 0+00 THRU STA. 7+00 PUERTO NUEVO CHANNEL

Scale: AS SHOWN

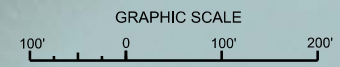
Drawing no. **11**

SHEET 11 OF 17





MAP LABEL	AIDS TO NAVIGATION	PLANE COORDINATES		LATITUDE	LONGITUDE
		X	Y		
MOORING BUOY	MOORING BUOY (0519)	766,510	884,462	18°27'42.35"	66°06'53.72"



NOTES:
 1. REFER TO SURVEY NO. 19-146,
 2. SEE SHEET NO. 1 FOR SURVEY NOTES.

US Army Corps of Engineers
 Jacksonville District
 SAFETY ON THIS JOB
 DEPENDS ON YOU

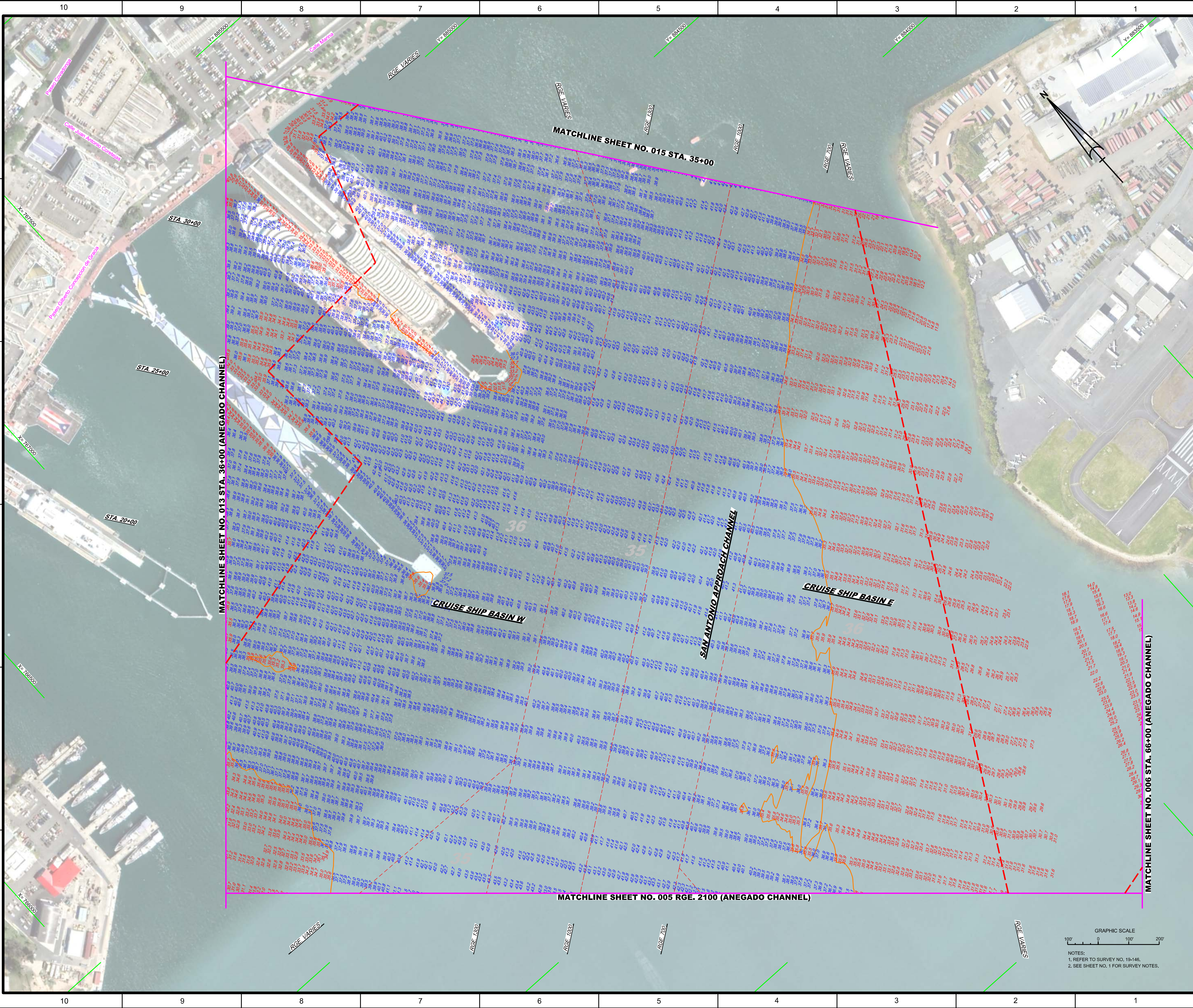
DEPARTMENT OF THE ARMY
 JACKSONVILLE DISTRICT, CORPS OF ENGINEERS
 JACKSONVILLE, FLORIDA

Call by: GMR
 Designed by: WRM
 Drawn by: WRM
 File No.: W12255-00-00-000
 Date: MAY 2019

19-146-A-01-00-00
 19-146-A-00-01-00-00
 19-146-A-00-02-00-00
 19-146-A-00-03-00-00
 19-146-A-00-04-00-00
 19-146-A-00-05-00-00
 19-146-A-00-06-00-00
 19-146-A-00-07-00-00
 19-146-A-00-08-00-00
 19-146-A-00-09-00-00
 19-146-A-00-10-00-00
 19-146-A-00-11-00-00
 19-146-A-00-12-00-00
 19-146-A-00-13-00-00
 19-146-A-00-14-00-00
 19-146-A-00-15-00-00
 19-146-A-00-16-00-00
 19-146-A-00-17-00-00
 19-146-A-00-18-00-00
 19-146-A-00-19-00-00
 19-146-A-00-20-00-00
 19-146-A-00-21-00-00
 19-146-A-00-22-00-00
 19-146-A-00-23-00-00
 19-146-A-00-24-00-00
 19-146-A-00-25-00-00
 19-146-A-00-26-00-00
 19-146-A-00-27-00-00
 19-146-A-00-28-00-00
 19-146-A-00-29-00-00
 19-146-A-00-30-00-00
 19-146-A-00-31-00-00
 19-146-A-00-32-00-00
 19-146-A-00-33-00-00
 19-146-A-00-34-00-00
 19-146-A-00-35-00-00
 19-146-A-00-36-00-00
 19-146-A-00-37-00-00
 19-146-A-00-38-00-00
 19-146-A-00-39-00-00
 19-146-A-00-40-00-00
 19-146-A-00-41-00-00
 19-146-A-00-42-00-00
 19-146-A-00-43-00-00
 19-146-A-00-44-00-00
 19-146-A-00-45-00-00
 19-146-A-00-46-00-00
 19-146-A-00-47-00-00
 19-146-A-00-48-00-00
 19-146-A-00-49-00-00
 19-146-A-00-50-00-00
 19-146-A-00-51-00-00
 19-146-A-00-52-00-00
 19-146-A-00-53-00-00
 19-146-A-00-54-00-00
 19-146-A-00-55-00-00
 19-146-A-00-56-00-00
 19-146-A-00-57-00-00
 19-146-A-00-58-00-00
 19-146-A-00-59-00-00
 19-146-A-00-60-00-00
 19-146-A-00-61-00-00
 19-146-A-00-62-00-00
 19-146-A-00-63-00-00
 19-146-A-00-64-00-00
 19-146-A-00-65-00-00
 19-146-A-00-66-00-00
 19-146-A-00-67-00-00
 19-146-A-00-68-00-00
 19-146-A-00-69-00-00
 19-146-A-00-70-00-00
 19-146-A-00-71-00-00
 19-146-A-00-72-00-00
 19-146-A-00-73-00-00
 19-146-A-00-74-00-00
 19-146-A-00-75-00-00
 19-146-A-00-76-00-00
 19-146-A-00-77-00-00
 19-146-A-00-78-00-00
 19-146-A-00-79-00-00
 19-146-A-00-80-00-00
 19-146-A-00-81-00-00
 19-146-A-00-82-00-00
 19-146-A-00-83-00-00
 19-146-A-00-84-00-00
 19-146-A-00-85-00-00
 19-146-A-00-86-00-00
 19-146-A-00-87-00-00
 19-146-A-00-88-00-00
 19-146-A-00-89-00-00
 19-146-A-00-90-00-00
 19-146-A-00-91-00-00
 19-146-A-00-92-00-00
 19-146-A-00-93-00-00
 19-146-A-00-94-00-00
 19-146-A-00-95-00-00
 19-146-A-00-96-00-00
 19-146-A-00-97-00-00
 19-146-A-00-98-00-00
 19-146-A-00-99-00-00
 19-146-A-00-100-00-00

SAN JUAN HARBOR
 SAN JUAN, PUERTO RICO
HYDROGRAPHIC EXAM SURVEY FY19
30 THRU 56-FOOT PROJECT
 STA. 11+24.57 THRU STA. 35+00 SAN ANTONIO APPROACH CHANNEL
PLAN

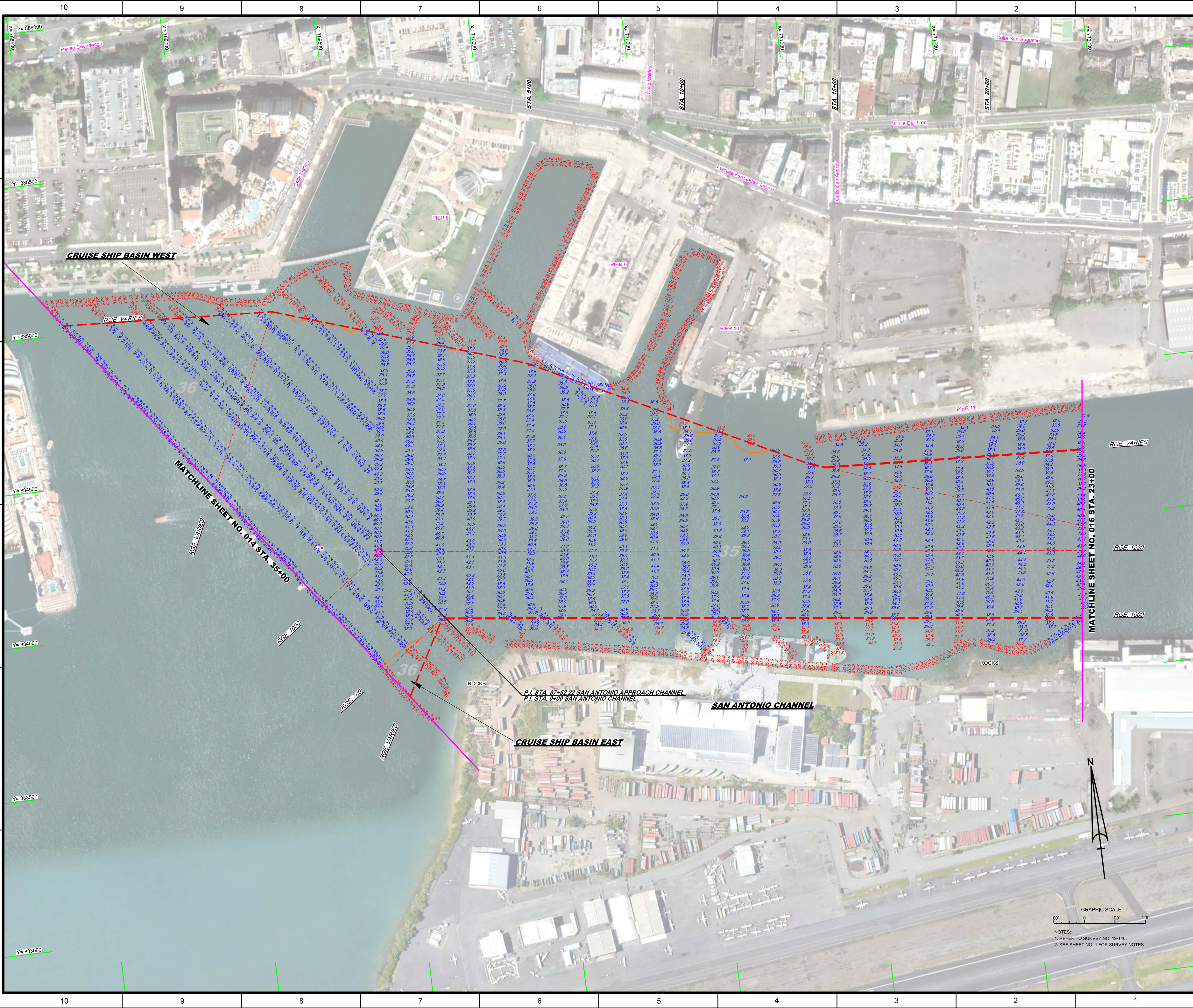
Scale: AS SHOWN
 Drawing no.
13
 SHEET 13 OF 17




<p>US Army Corps of Engineers Jacksonville District</p>	
<p>SAFETY ON THIS JOB DEPENDS ON YOU</p>	
<p>DEPARTMENT OF THE ARMY JACKSONVILLE DISTRICT, CORPS OF ENGINEERS JACKSONVILLE, FLORIDA</p>	
<p>Checked By: GHR</p>	<p>Designed By: WRM</p>
<p>Drawn By: WRM</p>	<p>File No: W12255-000-0004</p>
<p>Date: MAY 2019</p>	<p>Reference File: 19-146-000-0004</p>
<p>19-146-000-0004.DGN 19-146-000-0004.DGN 19-146-000-0004.DGN 19-146-000-0004.DGN 19-146-000-0004.DGN</p>	
<p>San Juan Harbor San Juan, Puerto Rico</p>	
<p>HYDROGRAPHIC EXAM SURVEY FY19 30 THRU 56-FOOT PROJECT</p>	
<p>STA. 11+24.57 THRU STA. 35+00 SAN ANTONIO APPROACH CHANNEL</p>	
<p>PLAN</p>	
<p>Scale: AS SHOWN</p>	
<p>Drawing no. 14</p>	
<p>SHEET 14 OF 17</p>	

GRAPHIC SCALE
100' 0 100' 200'

NOTES:
1. REFER TO SURVEY NO. 19-146.
2. SEE SHEET NO. 1 FOR SURVEY NOTES.





US Army Corps of Engineers
Jacksonville District

SAFETY ON THIS JOB
DEPENDS ON YOU

DEPARTMENT OF THE ARMY
JACKSONVILLE DISTRICT, CORPS OF ENGINEERS
JACKSONVILLE, FLORIDA

San Juan Harbor
San Juan, Puerto Rico

**HYDROGRAPHIC EXAM SURVEY FY19
30 THRU 56-FOOT PROJECT**

STA. 35+00 THRU 37+52.22 SAN ANTONIO APPROACH CHANNEL AND
STA. 0+00 THRU STA. 23+00 SAN ANTONIO CHANNEL

PLAN

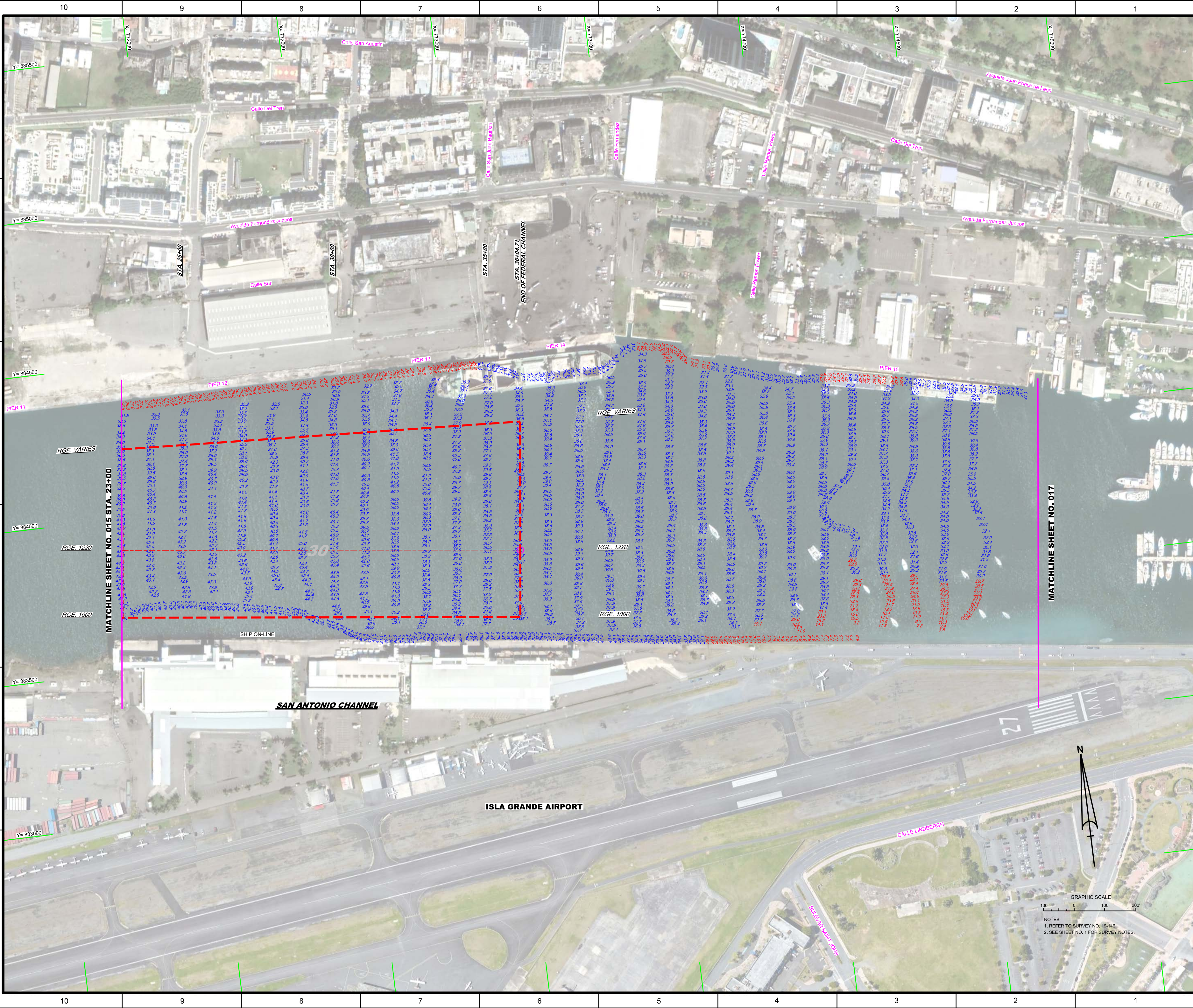
Scale: AS SHOWN


Drawing no. **15**

SHEET 15 OF 17

GRAPHIC SCALE
100' 0 100' 200'

NOTES:
1. REFER TO SURVEY NO. 19-146.
2. SEE SHEET NO. 1 FOR SURVEY NOTES.





US Army Corps
of Engineers
Jacksonville District

SAFETY ON THIS JOB
DEPENDS ON YOU

Designed by: **WRM**

Checked by: **GHR**

Drawn by: **WRM**

File No: **W19255-00-0000**

Reference Map: **19-465-00-0000**

Revision: **19-465-00-0000**

DEPARTMENT OF THE ARMY
JACKSONVILLE DISTRICT, CORPS OF ENGINEERS
JACKSONVILLE, FLORIDA

Project: **PLAN**

Project Title: **HYDROGRAPHIC EXAM SURVEY FY19
30 THRU 56-FOOT PROJECT**

Stationing: **STA. 23+00 THRU STA. 30+00, 71 SAN ANTONIO CHANNEL**

Scale: AS SHOWN

Drawing No. **16**

SHEET 16 OF 17

GRAPHIC SCALE
100' 0 100' 200'

NOTES:
1. REFER TO SURVEY NO. 19-146.
2. SEE SHEET NO. 1 FOR SURVEY NOTES.



MATCHLINE SHEET NO. 016

THIS AREA NOT SURVEYED

ISLA GRANDE AIRPORT



GRAPHIC SCALE
100' 0 100' 200'

NOTES:
1. REFER TO SURVEY NO. 19-146.
2. SEE SHEET NO. 1 FOR SURVEY NOTES.



US Army Corps
of Engineers
Jacksonville District
**SAFETY ON THIS JOB
DEPENDS ON YOU**

Design	
Check	

DEPARTMENT OF THE ARMY
JACKSONVILLE DISTRICT, CORPS OF ENGINEERS
JACKSONVILLE, FLORIDA

Designed by: WRM
 Drawn by: WRM
 File No.: 19-146-02-00-0003
 Date: MAY 2019
 Reference File: 19-146-02-00-0003

SAN JUAN HARBOUR
 SAN JUAN, PUERTO RICO
**HYDROGRAPHIC EXAM SURVEY FY19
 30 THRU 56-FOOT PROJECT**
 EXTENSION OF SAN ANTONIO CHANNEL TO SAN JUAN MARINA
PLAN

Scale: AS SHOWN

Drawing no.
17