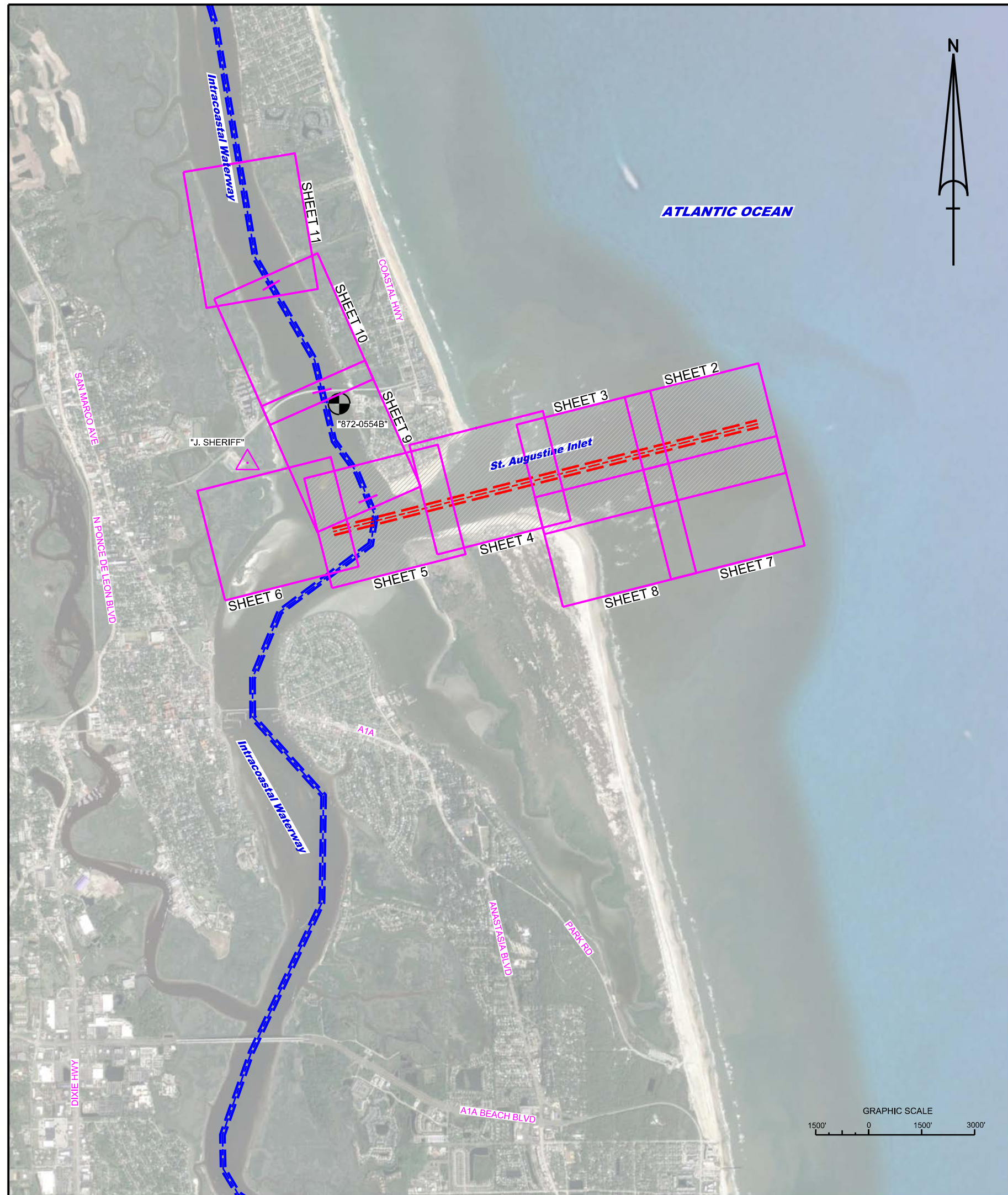
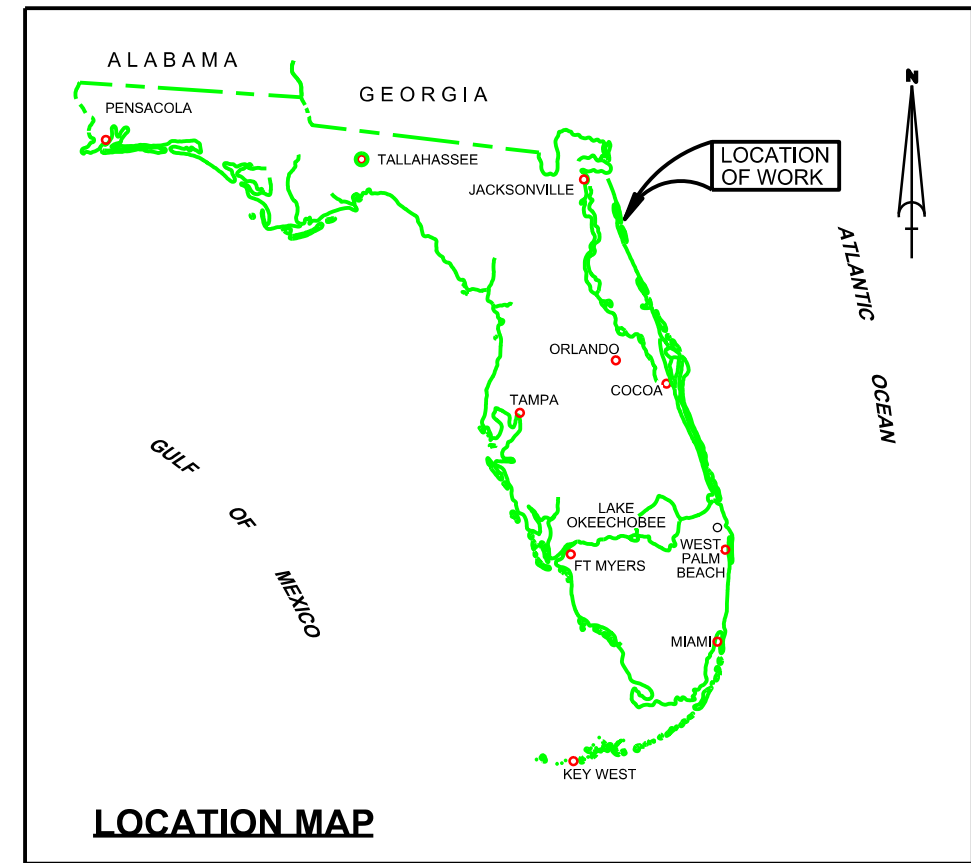


ST. AUGUSTINE INLET ST. JOHNS COUNTY, FLORIDA HYDROGRAPHIC EXAM SURVEY FY19 16-FOOT PROJECT



SURVEY NOTES

- REFER TO SURVEY NO. 19-144.
 - DEPTHS DEPICTED BY THIS SURVEY ARE REFERENCED TO MEAN LOWER LOW WATER (MLLW), TIDAL EPOCH 1983-2001, AS REPORTED BY THE NATIONAL OCEANIC AND ATMOSPHERIC ADMINISTRATION (NOAA). NOAA'S VDATUM MODEL WAS USED AND CALIBRATED TO THE PUBLISHED MLLW HEIGHTS OF THE BENCH MARKS ASSOCIATED WITH THE TIDE GAUGE SITE SPECIFIED BELOW:

NOAA TIDAL STATION 872-0554, VILANO BEACH (ICWW) (PID: DL5712)
 - TIDAL REDUCTIONS WERE OBTAINED UTILIZING A REAL-TIME KINEMATIC (RTK) GPS AND REFERENCED TO MLLW UTILIZING A HYPACK KINEMATIC TIDE DATUM (KTD) MODEL PRODUCED USING NOAA VDATUM. KTD FILE NAME IS: CAMDENG-NASSAU-DUVAL-STJOHNS-FLAGLER_01FEB2011.KTD.
 - ALL ELEVATIONS ARE BELOW THE CHART DATUM UNLESS PRECEDED BY A (+) SIGN.
 - PLANE COORDINATES ARE BASED ON THE TRANSVERSE MERCATOR PROJECTION FOR THE EAST ZONE OF FLORIDA AND REFERENCED TO NORTH AMERICAN DATUM OF 1983 (NAD83).
 - ALL STATIONING REFERS TO THE CENTERLINE OF THE CHANNEL.
 - THIS SURVEY WAS PERFORMED USING REAL-TIME KINEMATIC (RTK) GPS POSITIONING WITH THE FOLLOWING REFERENCE BASE LOCATION:

REFERENCE BASE LOCATED AT "J. SHERIFF" (PID: BBCJ50)

TIDE STAFF LOCATED AT "872 0554 B TIDAL" (PID: DL5712)
 - VERTICAL MEASUREMENTS WERE MADE USING A ROSS SMARTSOUNDER 835 OPERATING AT 28/200 KHZ. ALL DEPTHS SHOWN ARE IN HIGH FREQUENCY.
- | VESSEL | DATE OF SURVEY | CUT |
|--------|----------------|------------------|
| SB-48 | 26 MAR 2019 | ENTRANCE CHANNEL |
- AIDS TO NAVIGATION WERE COLLECTED DURING THIS SURVEY.
 - THE INFORMATION DEPICTED ON THIS MAP REPRESENTS THE RESULTS OF SURVEYS MADE ON THE DATES INDICATED ABOVE AND CAN ONLY BE CONSIDERED AS INDICATING THE GENERAL CONDITIONS AT THAT TIME. THIS CHART IS SOLELY FOR THE DISTRIBUTION OF AVAILABLE DEPTHS AT THE TIME OF THE SURVEY.
 - SURVEY ACCURACY PERFORMANCE STANDARDS, QUALITY CONTROL, AND QUALITY ASSURANCE REQUIREMENTS WERE FOLLOWED DURING THIS SURVEY IN ACCORDANCE WITH USACE EM 1110-2-1003, HYDROGRAPHIC SURVEYING, 30 NOV 2013.

LEGEND	
	MONUMENT
	LIGHTED BEACON
	GREEN DAY BEACON
	RED DAY BEACON
	RED LIGHTED BUOY
	GREEN LIGHTED BUOY
	CAN BUOY
	NUN BUOY
	TIDE STAFF
	PROJECT DEPTH

US Army Corps of Engineers
Jacksonville District

SAFETY ON THIS JOB
DEPENDS ON YOU

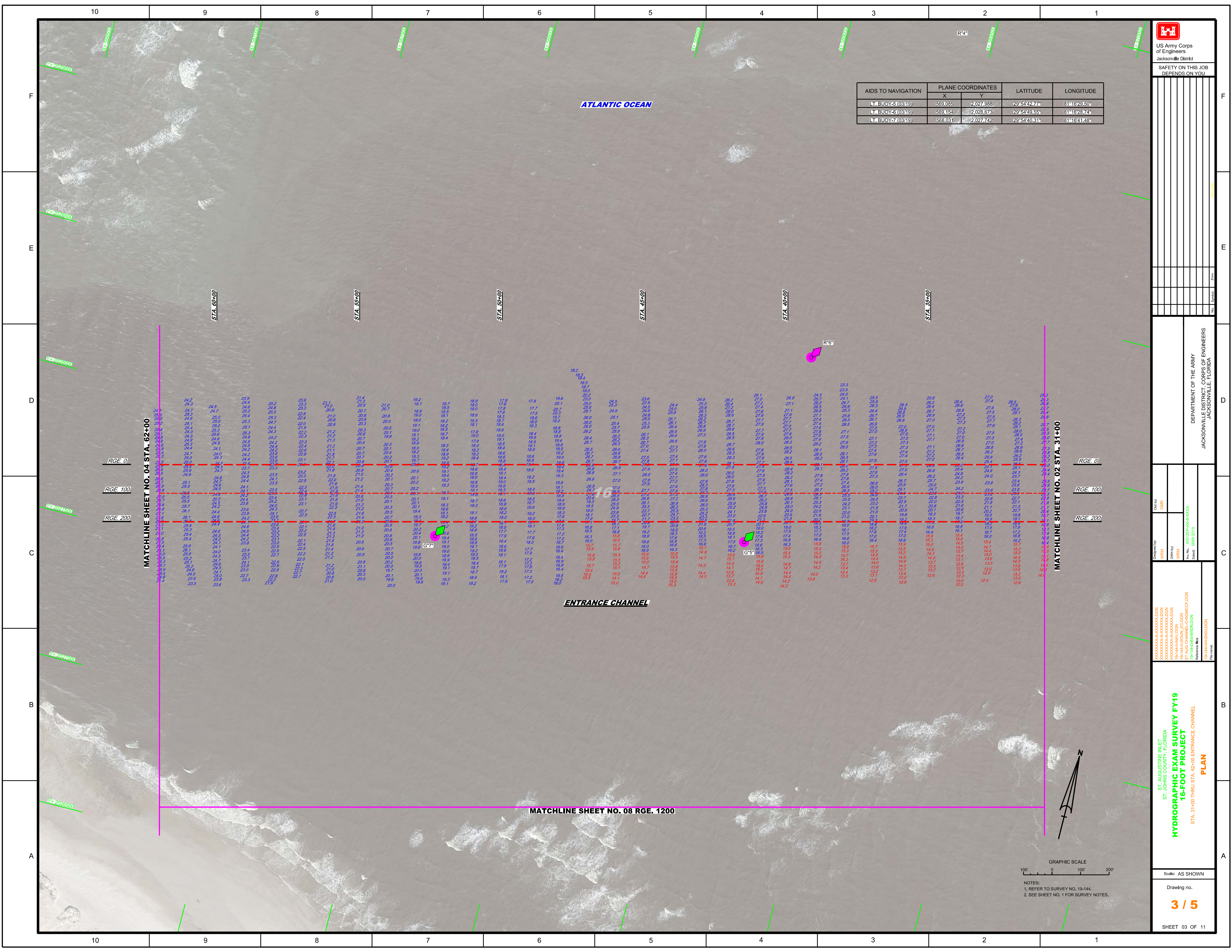
DEPARTMENT OF THE ARMY
JACKSONVILLE DISTRICT, CORPS OF ENGINEERS
JACKSONVILLE, FLORIDA

ST. AUGUSTINE INLET
ST. JOHNS COUNTY, FLORIDA
HYDROGRAPHIC EXAM SURVEY FY19
16-FOOT PROJECT
INDEX, LOCATION AND VICINITY
MAP

Scale: AS SHOWN

Drawing no.
1 / 5

SHEET 01 OF 11



ATLANTIC OCEAN

ENTRANCE CHANNEL

MATCHLINE SHEET NO. 04 STA. 02+00

MATCHLINE SHEET NO. 02 STA. 31+00

RGE. 0
RGE. 100
RGE. 200

RGE. 0
RGE. 100
RGE. 200

AIDS TO NAVIGATION	PLANE COORDINATES		LATITUDE	LONGITUDE
	X	Y		
LT BUOY 45 (03/19)	568.085	2,027.988	29°54'42.77"	81°16'23.50"
LT BUOY 46 (03/19)	568.154	2,028.673	29°54'49.55"	81°16'28.74"
LT BUOY 47 (03/19)	568.031	2,027.742	29°54'40.31"	81°16'41.48"

US Army Corps of Engineers
Jacksonville District
SAFETY ON THIS JOB
DEPENDS ON YOU

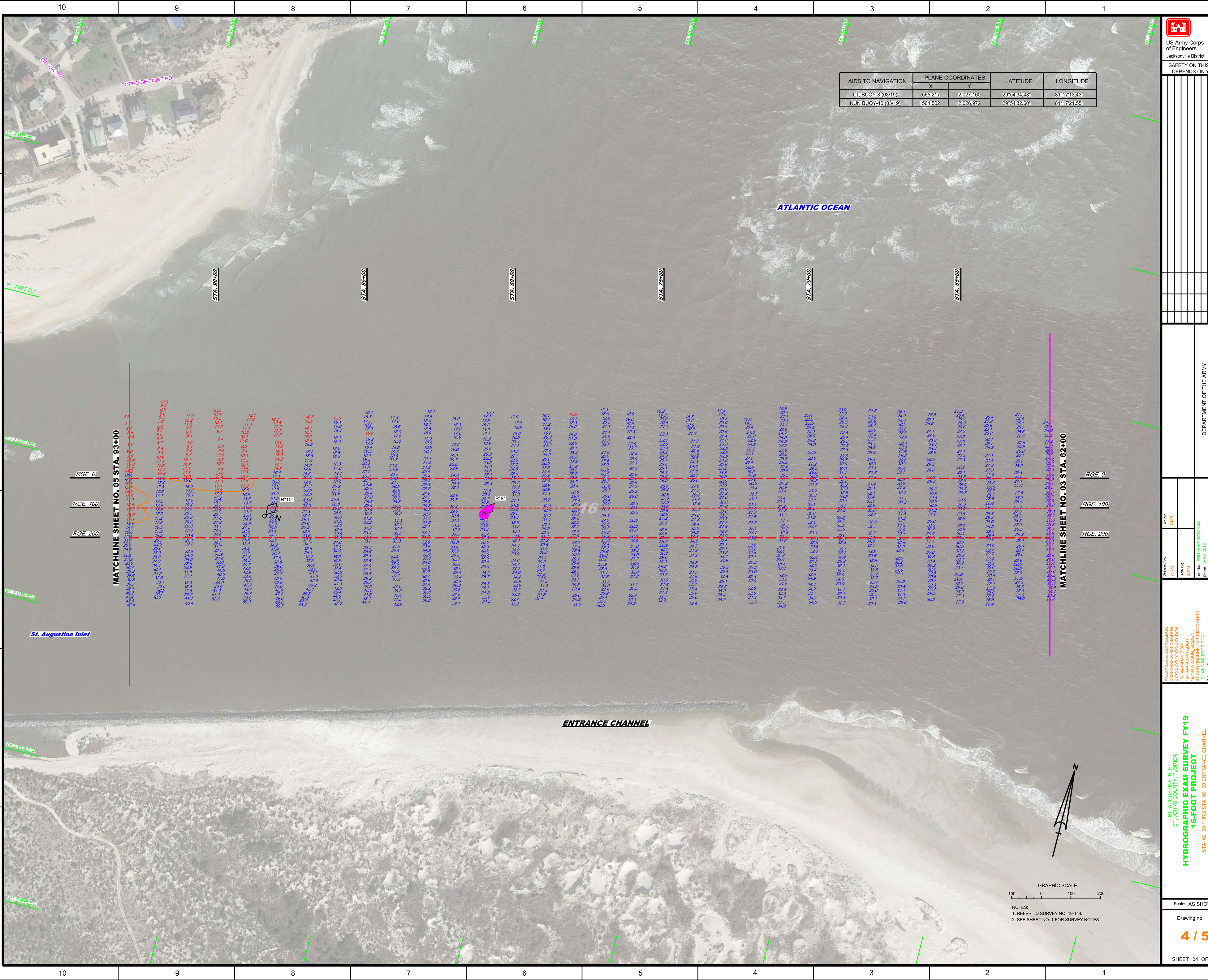
DEPARTMENT OF THE ARMY
JACKSONVILLE DISTRICT, CORPS OF ENGINEERS
JACKSONVILLE, FLORIDA

ST. AUGUSTINE INLET
ST. JOHNS COUNTY, FLORIDA
HYDROGRAPHIC EXAM SURVEY FY19
16-FOOT PROJECT
STA. 31+00 THRU STA. 02+00 ENTRANCE CHANNEL
PLAN

Scale: AS SHOWN
Drawing no.
3 / 5
SHEET 03 OF 11



NOTES:
1. REFER TO SURVEY NO. 19-144.
2. SEE SHEET NO. 1 FOR SURVEY NOTES.



AIDS TO NAVIGATION	PLANE COORDINATES		LATITUDE	LONGITUDE
	X	Y		
LT. BUOY-8 (03/19)	565.217	2,027.160	29°54'34.48"	81°17'13.43"
NUN BUOY-10 (03/19)	564.502	2,026.972	29°54'32.60"	81°17'21.55"

US Army Corps of Engineers
Jacksonville District

SAFETY ON THIS JOB
DEPENDS ON YOU

	DEPARTMENT OF THE ARMY JACKSONVILLE DISTRICT, CORPS OF ENGINEERS JACKSONVILLE, FLORIDA
--	--

MATCHLINE SHEET NO. 05 STA. 93+00

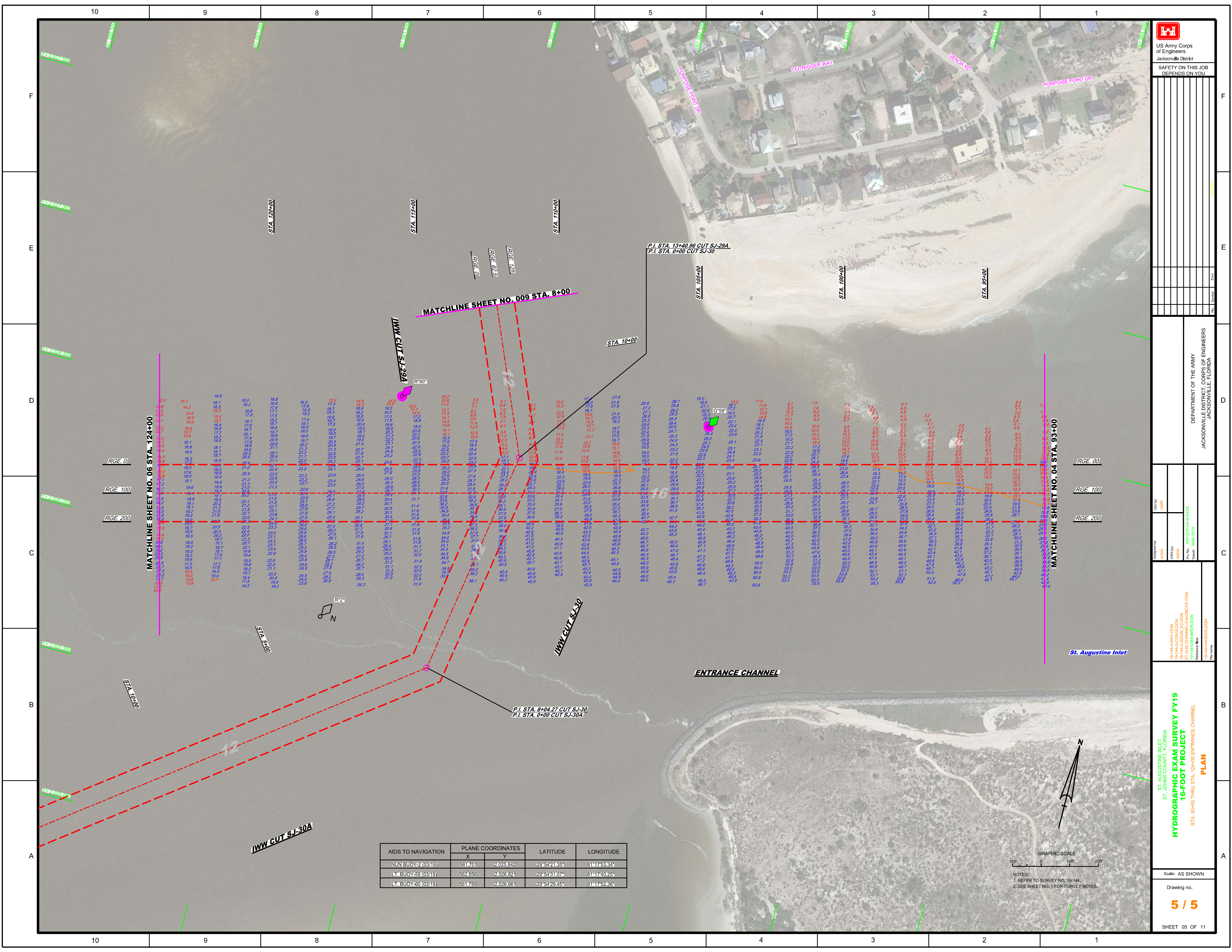
MATCHLINE SHEET NO. 03 STA. 62+00

ST. AUGUSTINE INLET
 ST. JOHNS COUNTY, FLORIDA
HYDROGRAPHIC EXAM SURVEY FY19
16-FOOT PROJECT
 STA. 62+00 THRU STA. 93+00 ENTRANCE CHANNEL
PLAN

Scale: AS SHOWN
 Drawing no.
4 / 5
 SHEET 04 OF 11

GRAPHIC SCALE
0 100' 200'


NOTES:
1. REFER TO SURVEY NO. 19-144.
2. SEE SHEET NO. 1 FOR SURVEY NOTES.



AIDS TO NAVIGATION	PLANE COORDINATES		LATITUDE	LONGITUDE
	X	Y		
NUN BUOY-2 (03/19)	561701	2,026,842	29°54'21.35"	81°17'53.34"
LT BUOY-59 (03/19)	562856	2,026,821	29°54'31.07"	81°17'20.25"
LT BUOY-60 (03/19)	561789	2,026,661	29°54'29.45"	81°17'52.36"



NOTES:
 1. REFER TO SURVEY NO. 19-144.
 2. SEE SHEET NO. 1 FOR SURVEY NOTES.



US Army Corps of Engineers
 Jacksonville District
 SAFETY ON THIS JOB
 DEPENDS ON YOU

DEPARTMENT OF THE ARMY
 JACKSONVILLE DISTRICT, CORPS OF ENGINEERS
 JACKSONVILLE, FLORIDA

Checked by: GHR
 Drawn by: GHR
 Date: MAR 2019

Project: HYDROGRAPHIC EXAM SURVEY FY19
 STA. 83+00 THRU STA. 124+00 ENTRANCE CHANNEL
 PLAN

Scale: AS SHOWN
 Drawing no. **5 / 5**
 SHEET 05 OF 11