

SHEET INDEX



**BIG BEND CHANNEL
(TAMPA HARBOR - ZONE 9)
HILLSBOROUGH COUNTY, FLORIDA
AFTER-DREDGE COMPILATION FY19
41-FOOT PROJECT**

SURVEY NOTES

- REFER TO SURVEY NO. 19-142. THIS IS A COMPILATION OF AFTER-DREDGE SURVEYS COMPLETED UNDER SURVEY NO. 19-016 FOR CONTRACT 18-C-0028.
- SOUNDINGS ARE IN FEET AND TENTHS AND REFER TO NOAA'S REPORTED MEAN LOWER LOW WATER (MLLW) OF THE 1983-2001 TIDAL EPOCH.
- TIDAL REDUCTIONS WERE OBTAINED UTILIZING A REAL-TIME KINEMATIC (RTK) GPS AND REFERRED TO MLLW UTILIZING A HYPACK KINEMATIC TIDE DATUM (KTD) MODEL. KTD FILE NAME IS: "SPC-FL-WEST-2010-12-07.KTD".
- ALL ELEVATIONS ARE BELOW THE CHART DATUM UNLESS PRECEDED BY A (+) SIGN.
- PLANE COORDINATES ARE BASED ON THE TRANSVERSE MERCATOR PROJECTION FOR THE WEST ZONE OF FLORIDA AND REFERENCED TO NORTH AMERICAN DATUM OF 1983 (NAD83).
- ALL STATIONING REFERS TO THE CENTERLINE OF THE CHANNEL.
- THIS SURVEY WAS PERFORMED USING REAL-TIME KINEMATIC (RTK) GPS POSITIONING WITH THE FOLLOWING REFERENCE BASE LOCATION:
REFERENCE BASE LOCATED AT "872 6562 B TIDAL" (PID: AG7604)
- DEPTHS DEPICTED BY THIS SURVEY ARE REFERENCED TO MLLW, TIDAL EPOCH 1983-2001, AS REPORTED BY THE NATIONAL OCEANIC AND ATMOSPHERIC ADMINISTRATION (NOAA). A MODIFIED VERSION OF NOAA'S VDATUM MODEL WAS USED TO CALIBRATE TO THE PUBLISHED MLLW HEIGHTS OF THE BENCHMARK BELOW:
NOAA TIDAL STATION 872 6562 A TIDAL (PID: AG7605) FOR ENTIRE PROJECT.
VERTICAL MEASUREMENTS WERE MADE USING A ROSS SMART SOUNDER DUAL-FREQUENCY 28/200 KHZ SINGLE-BEAM TRANSDUCER. ALL SOUNDINGS SHOWN ARE IN LOW FREQUENCY.
- VESELLE DATE OF SURVEY CUT
SV JACKSONVILLE/
SB-44/SB-50/SB-52 11 JAN - 4 APR 2019 ENT. CHAN., TURNING BASIN,
EAST CHANNEL
- AIDS TO NAVIGATION NOT SHOWN ON THIS COMPILATION SURVEY.
- THE INFORMATION DEPICTED ON THIS MAP REPRESENTS THE RESULTS OF SURVEYS MADE ON THE DATES INDICATED ABOVE AND CAN ONLY BE CONSIDERED AS INDICATING THE GENERAL CONDITIONS AT THAT TIME. THIS CHART IS SOLELY FOR THE DISTRIBUTION OF AVAILABLE DEPTHS AT THE TIME OF THE SURVEY.
- SURVEY ACCURACY PERFORMANCE STANDARDS, QUALITY CONTROL, AND QUALITY ASSURANCE REQUIREMENTS WERE FOLLOWED DURING THIS SURVEY IN ACCORDANCE WITH USACE EM 1110-2-1003, HYDROGRAPHIC SURVEYING, 30 NOV 2013.

| LEGEND | |
|--------|--------------------|
| | MONUMENT |
| | LIGHTED BEACON |
| | GREEN DAYBEACON |
| | RED DAYBEACON |
| | RED LIGHTED BUOY |
| | GREEN LIGHTED BUOY |
| | CAN BUOY |
| | NUN BUOY |
| | TIDE STAFF |
| | PROJECT DEPTH |

US Army Corps of Engineers
Jacksonville District
SAFETY ON THIS JOB
DEPENDS ON YOU

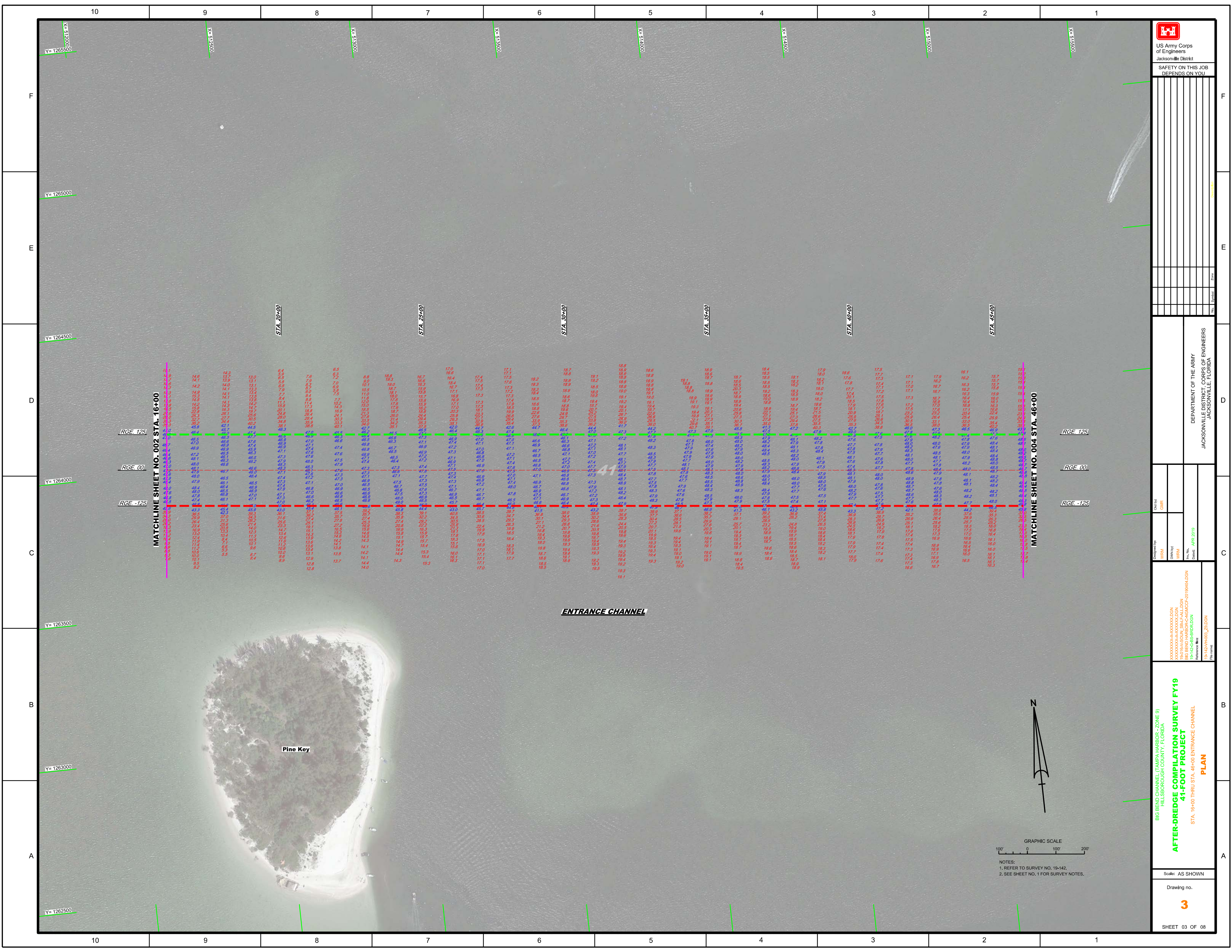
DEPARTMENT OF THE ARMY
JACKSONVILLE DISTRICT, CORPS OF ENGINEERS
JACKSONVILLE, FLORIDA

Check By: GHR
Designed By: WRM
Drawn By: WRM
File Name: TAMPA HARBOR-C-NGMCCF.DGN
Reference File: 19-142-CB-SB-IBR.DGN
19-142-HP-001_Z.DGN

APR 2019

**AFTER-DREDGE COMPILATION SURVEY FY19
41-FOOT PROJECT
INDEX, LOCATION AND VICINITY
MAP**

Scale: AS SHOWN
Drawing no. **1**
SHEET 01 OF 08



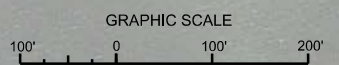
US Army Corps of Engineers
Jacksonville District
SAFETY ON THIS JOB
DEPENDS ON YOU

DEPARTMENT OF THE ARMY
JACKSONVILLE DISTRICT CORPS OF ENGINEERS
JACKSONVILLE, FLORIDA

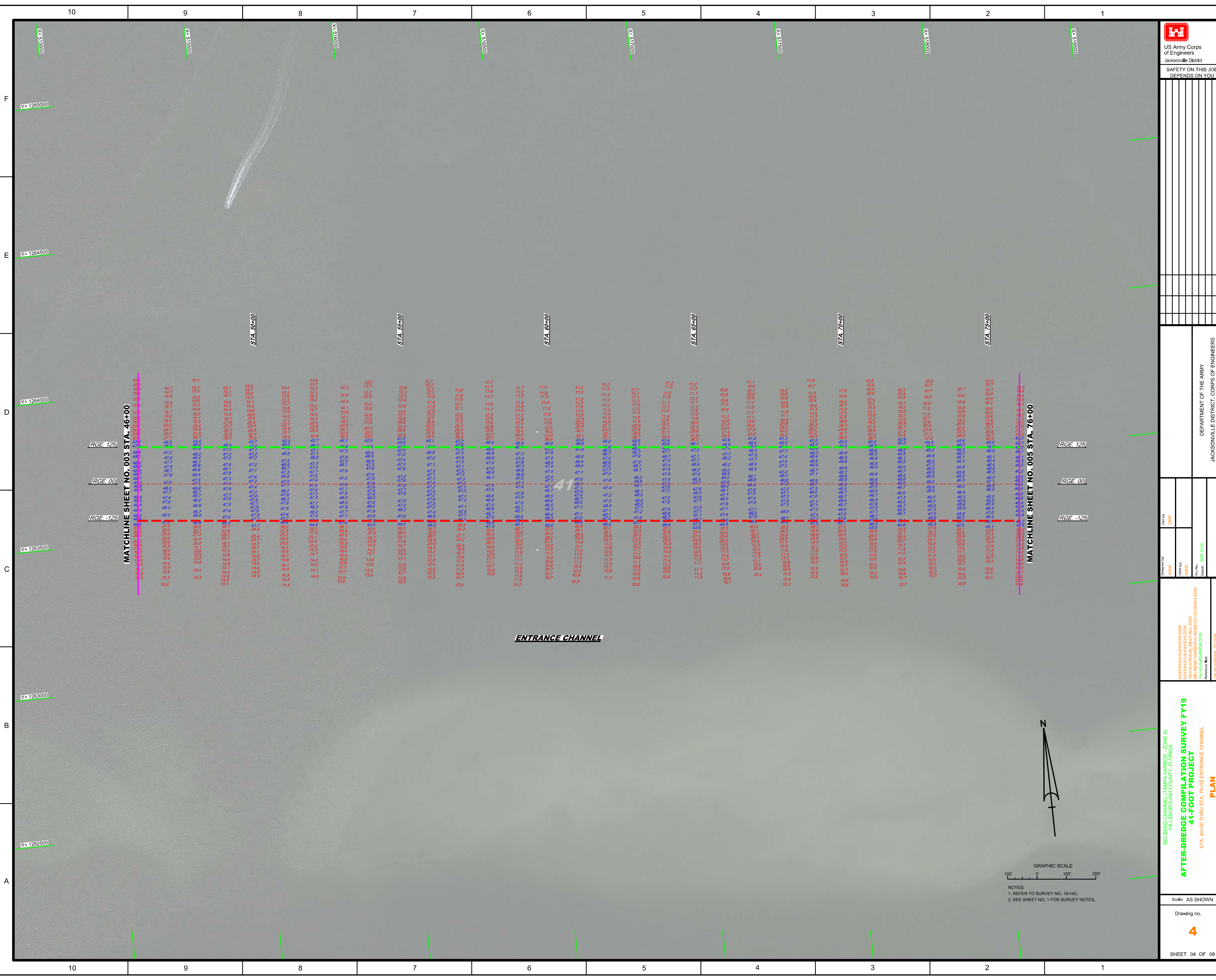
Drawn by: GHR
Checked by: GHR
Date: APR 2019

XXXXXXXXXXXXXXXXXXXX
XXXXXXXXXXXXXXXXXXXX
BIG BEND CHANNEL - ZONE 9
HILLSBOROUGH COUNTY, FLORIDA
41-FOOT PROJECT
STA. 16+00 THRU STA. 46+00 ENTRANCE CHANNEL
Reference files:
19-142-000_Z1.DGN
19-142-000_Z2.DGN

Scale: AS SHOWN
Drawing no. **3**
SHEET 03 OF 08



NOTES:
1. REFER TO SURVEY NO. 19-142.
2. SEE SHEET NO. 1 FOR SURVEY NOTES.

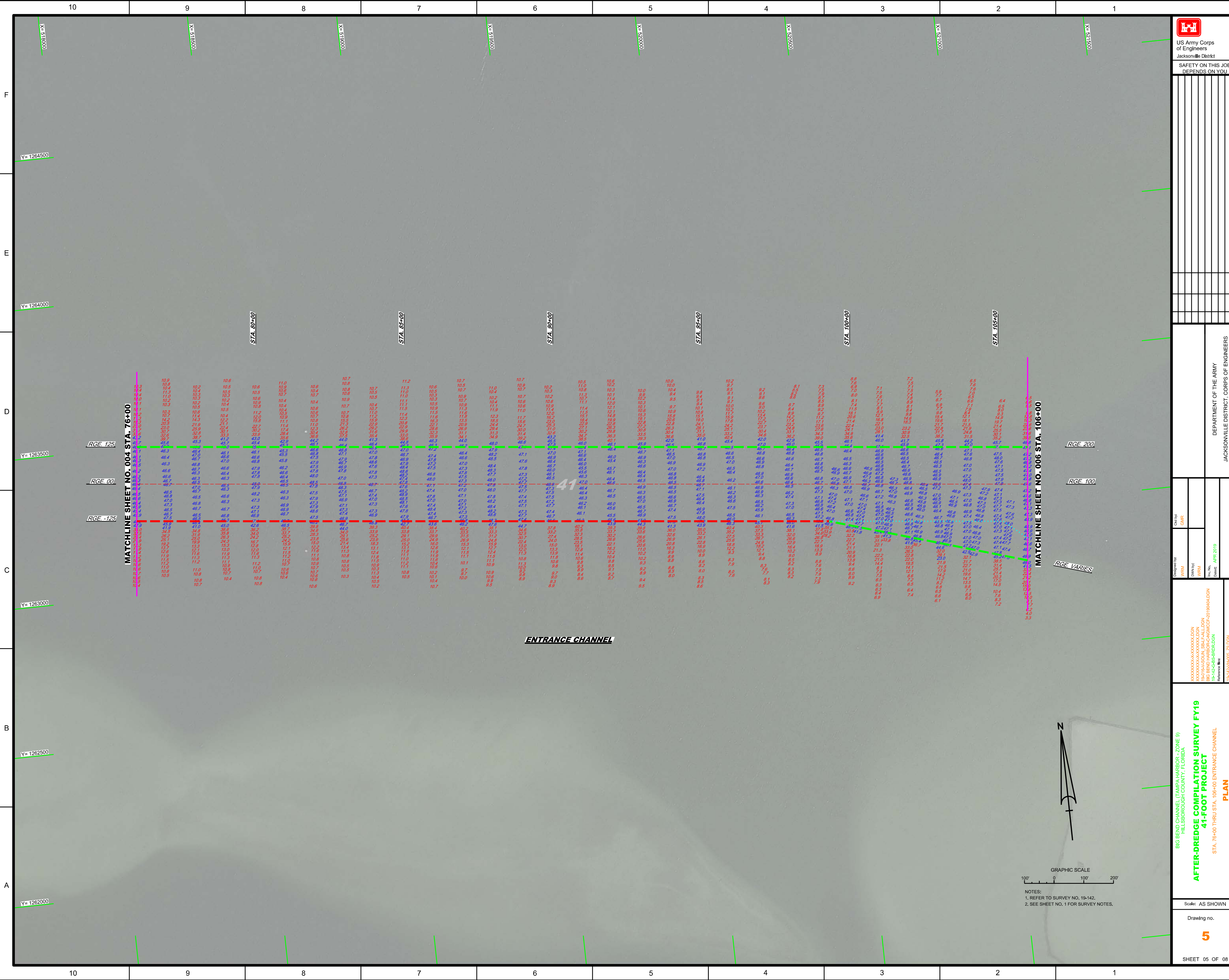


ENTRANCE CHANNEL

GRAPHIC SCALE
100' 0 100' 200'
NOTES:
1. REFER TO SURVEY NO. 19-142.
2. SEE SHEET NO. 1 FOR SURVEY NOTES.

MATCHLINE SHEET NO. 003 STA. 46+00

MATCHLINE SHEET NO. 005 STA. 76+00



US Army Corps of Engineers
Jacksonville District
SAFETY ON THIS JOB
DEPENDS ON THIS JOB

DEPARTMENT OF THE ARMY
JACKSONVILLE DISTRICT, CORPS OF ENGINEERS
JACKSONVILLE, FLORIDA

Drawn by: GHR
Checked by: GHR

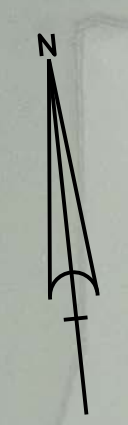
XXXXXXXXXXXXXXXXXXXX
XXXXXXXXXXXXXXXXXXXX
XXXXXXXXXXXXXXXXXXXX
BIG BEND HARBOR-CANAL-CP-2019-04-DGN
19-142-6-BS-BR-01-DGN
Reference: 19-142-6-BS-BR-02-DGN

After-Dredge Compilation Survey FY19
41-FOOT PROJECT
STA. 76+00 THRU STA. 106+00 ENTRANCE CHANNEL
PLAN

Scale: AS SHOWN
Drawing no. 5
SHEET 05 OF 08

GRAPHIC SCALE
100' 0 100' 200'

NOTES:
1. REFER TO SURVEY NO. 19-142.
2. SEE SHEET NO. 1 FOR SURVEY NOTES.



ENTRANCE CHANNEL

MATCHLINE SHEET NO. 004 STA. 76+00

MATCHLINE SHEET NO. 006 STA. 106+00

RGE 125

RGE 200

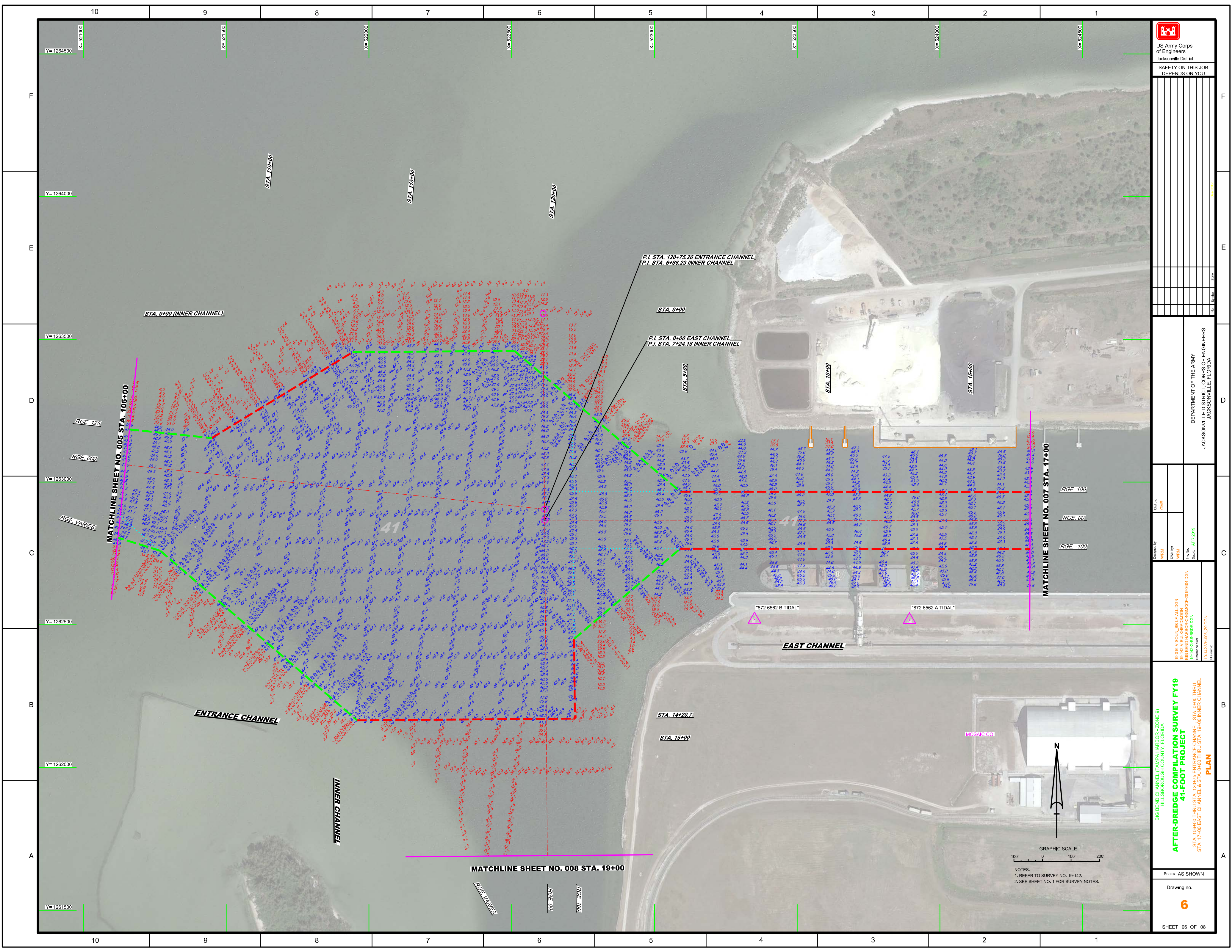
RGE 00

RGE 100

RGE -125

RGE VARIES

41



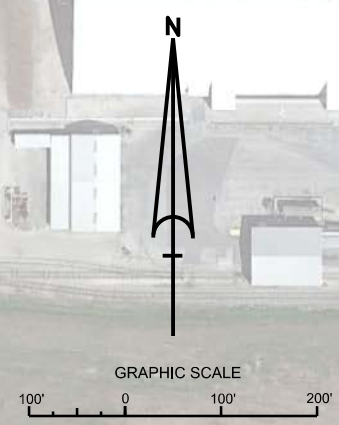
US Army Corps of Engineers
 Jacksonville District
 SAFETY ON THIS JOB
 DEPENDS ON YOU

DEPARTMENT OF THE ARMY
 JACKSONVILLE DISTRICT, CORPS OF ENGINEERS
 JACKSONVILLE, FLORIDA

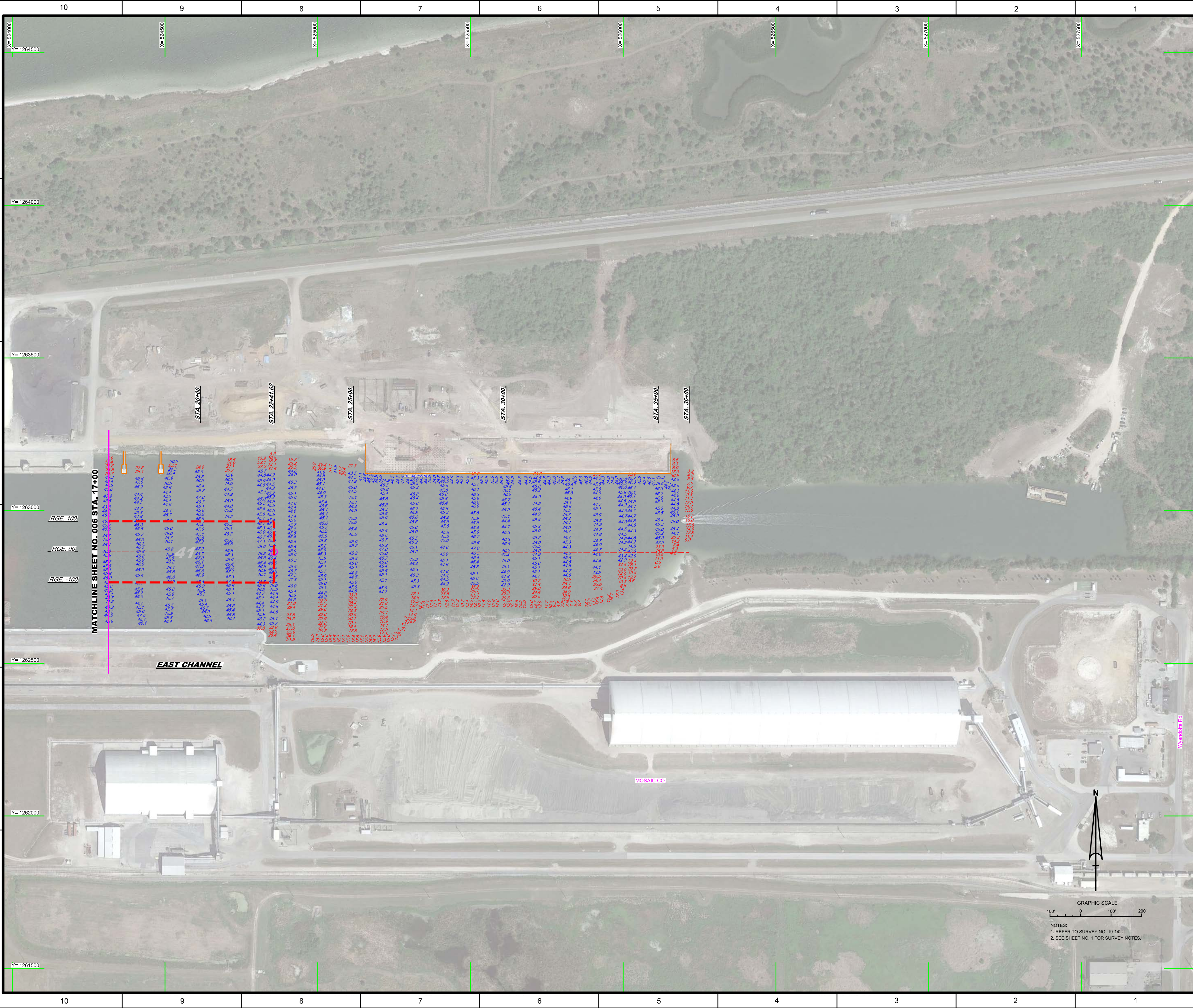
| | |
|--------------|----------|
| Checked by: | GHM |
| Designed by: | WRM |
| Drawn by: | WRM |
| File No.: | APR 2019 |
| Issue Date: | APR 2019 |

19-09-000A_SBL-F-ALLDGN
 19-14-000A-SB-C-ALLDGN
 19-14-000A-SB-R-ALLDGN
 19-14-000A-SB-Z-ALLDGN

PLAN
AFTER-DREDGE COMPILATION SURVEY FY19
41-FOOT PROJECT
 STA. 0+00 THRU STA. 120+75 ENTRANCE CHANNEL STA. 0+00 THRU STA. 17+00 EAST CHANNEL & STA. 0+00 THRU STA. 19+00 INNER CHANNEL



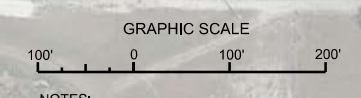
NOTES:
 1. REFER TO SURVEY NO. 19-142.
 2. SEE SHEET NO. 1 FOR SURVEY NOTES.



MATCHLINE SHEET NO. 006 STA. 17+00

EAST CHANNEL

MOSAIC CO.



NOTES:
 1. REFER TO SURVEY NO. 19-142.
 2. SEE SHEET NO. 1 FOR SURVEY NOTES.

| | |
|---------------------------------------------------------------------------------------------------------------------------------------------------------------------------------------------------------------|----------------------------------------------------------------------------------------------|
| US Army Corps of Engineers Jacksonville District SAFETY ON THIS JOB DEPENDS ON YOU | |
| Client: GMR Designer: WRM DWN: PFC WRM WRM Date: APR 2019 | DEPARTMENT OF THE ARMY JACKSONVILLE DISTRICT, CORPS OF ENGINEERS JACKSONVILLE, FLORIDA |
| BIG BEND CHANNEL (TAMPA HARBOR - ZONE 9) HILLSBOROUGH COUNTY, FLORIDA AFTER-DREDGE COMPILATION SURVEY FY19 41-FOOT PROJECT STA. 17+00 THRU STA. 22+1.62 EAST CHANNEL PLAN | |
| Scale: AS SHOWN Drawing no. 7 | SHEET 07 OF 08 |

