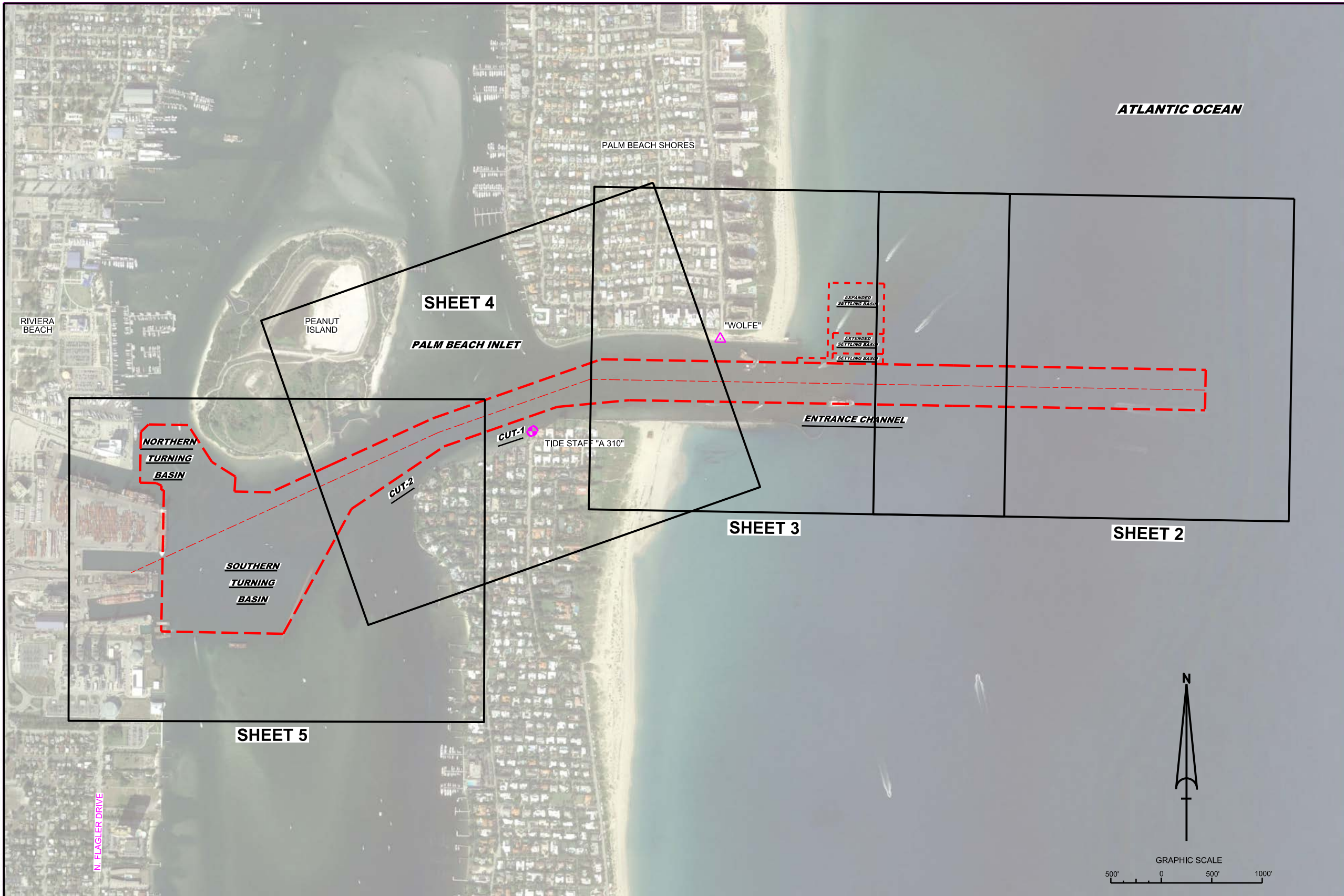




PALM BEACH HARBOR, FLORIDA 2Q EXAMINATION SURVEY FY19 25, 33, 35, 37 & 39-FOOT PROJECT



SURVEY NOTES

- REFER TO SURVEY NO. 19-130.
 - SOUNDINGS ARE IN FEET AND TENTHS AND REFER TO NOAA'S REPORTED MEAN LOWER LOW WATER (MLLW) OF THE 1983-2001 TIDAL EPOCH.
 - TIDAL REDUCTIONS WERE OBTAINED UTILIZING A REAL-TIME KINEMATIC (RTK) GPS AND REFERENCED TO MLLW UTILIZING A HYPACK KINEMATIC TIDE DATUM (KTD) MODEL. KTD FILE NAME IS: "PALMBEACH_2018 05 03.KTD".
 - ALL ELEVATIONS ARE BELOW THE CHART DATUM UNLESS PRECEDED BY A (+) SIGN.
 - PLANE COORDINATES ARE BASED ON THE TRANSVERSE MERCATOR PROJECTION FOR THE EAST ZONE OF FLORIDA AND REFERENCED TO NORTH AMERICAN DATUM OF 1983 (NAD83).
 - ALL STATIONING REFERS TO THE CENTERLINE OF THE CHANNEL.
 - THIS SURVEY WAS PERFORMED USING REAL-TIME KINEMATIC (RTK) GPS POSITIONING WITH THE FOLLOWING REFERENCE BASE LOCATION:
REFERENCE BASE LOCATED AT "WOLFE" (OPUS PID: BBB246)
TIDE STAFF LOCATED FROM "A 310" (PID: AD2870)
 - DEPTHS DEPICTED BY THIS SURVEY ARE REFERENCED TO MLLW, TIDAL EPOCH 1983-2001 AS REPORTED BY THE NATIONAL OCEANIC AND ATMOSPHERIC ADMINISTRATION (NOAA). NOAA'S VDATUM MODEL WAS USED AND CALIBRATED TO THE PUBLISHED MLLW HEIGHTS OF THE BENCHMARKS ASSOCIATED WITH THE TIDE GAUGE SITE SPECIFIED BELOW:
NOAA TIDAL STATION 872-2588, PORT OF W. PALM BEACH, LAKE WORTH (PID: AD2870)
VERTICAL MEASUREMENTS WERE MADE USING A R2SONIC 2024 MULTI-BEAM SYSTEM. ALL SOUNDINGS SHOWN ARE IN HIGH FREQUENCY.
- | VESSEL | DATE OF SURVEY | CUT |
|-----------|----------------|--|
| R. WITMER | 14-16 MAR 2019 | ENT. CH., SETTLING BASIN, 1 & 2 T.B., NORTH T.B. |
- AIDS TO NAVIGATION WERE LOCATED DURING THIS SURVEY.
 - THE INFORMATION DEPICTED ON THIS MAP REPRESENTS THE RESULTS OF SURVEYS MADE ON THE DATES INDICATED ABOVE AND CAN ONLY BE CONSIDERED AS INDICATING THE GENERAL CONDITIONS AT THAT TIME. THIS CHART IS SOLELY FOR THE DISTRIBUTION OF AVAILABLE DEPTHS AT THE TIME OF THE SURVEY.
 - SURVEY ACCURACY PERFORMANCE STANDARDS, QUALITY CONTROL, AND QUALITY ASSURANCE REQUIREMENTS WERE FOLLOWED DURING THIS SURVEY IN ACCORDANCE WITH USACE EM 1110-2-1003, HYDROGRAPHIC SURVEYING, 30 NOV 2013.

LEGEND	
	MONUMENT
	LIGHTED BEACON
	GREEN DAYBEACON
	RED DAYBEACON
	RED LIGHTED BUOY
	GREEN LIGHTED BUOY
	CAN BUOY
	NUN BUOY
	TIDE STAFF
	PROJECT DEPTH

US Army Corps of Engineers
Jacksonville District

SAFETY ON THIS JOB
DEPENDS ON YOU

DEPARTMENT OF THE ARMY
JACKSONVILLE DISTRICT, CORPS OF ENGINEERS
JACKSONVILLE, FLORIDA

DESIGNED BY: WRM
DRAWN BY: WRM
CHECKED BY: WRM
DATE: MAR 2019

NOAA TIDAL STATION 872-2588, PORT OF W. PALM BEACH, LAKE WORTH (PID: AD2870)
VERTICAL MEASUREMENTS WERE MADE USING A R2SONIC 2024 MULTI-BEAM SYSTEM. ALL SOUNDINGS SHOWN ARE IN HIGH FREQUENCY.

PALM BEACH HARBOR, FLORIDA
2Q EXAMINATION SURVEY FY19
25, 33, 35, 37 & 39-FOOT PROJECT
INDEX, LOCATION AND VICINITY
MAP

Scale: AS SHOWN

Drawing no.
1

SHEET 01 OF 05

REV.	DATE	BY	CHK	DESCRIPTION

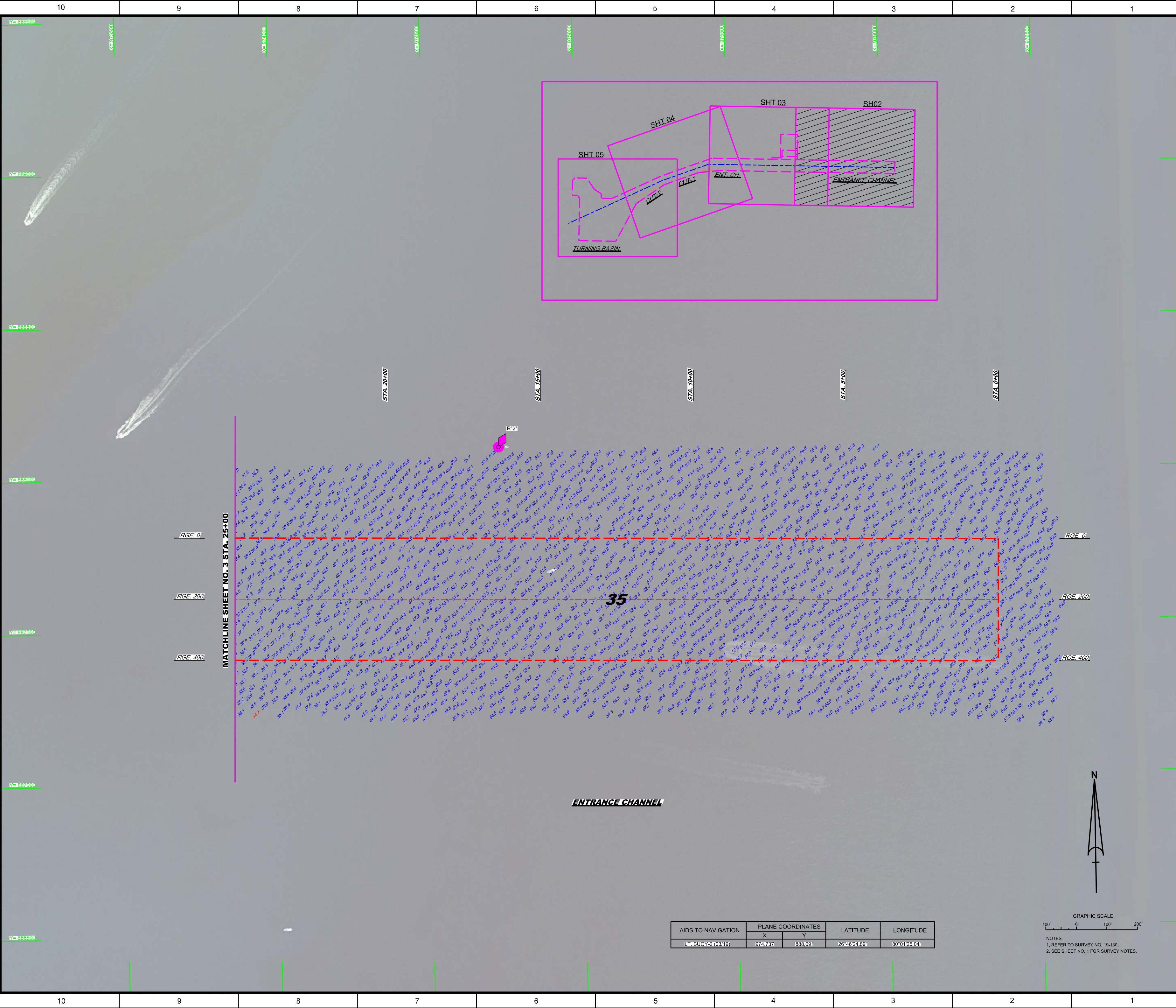
DEPARTMENT OF THE ARMY
JACKSONVILLE DISTRICT, CORPS OF ENGINEERS
JACKSONVILLE, FLORIDA

Checked By: GHR
Designed By: WRM
Drawn By: WRM
Issue Date: MAR 2019

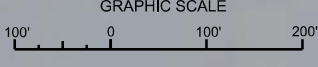
19-130-AMV/DGN
PALM BEACH HARBOR/PC-CAC/CF/DGN
19-130-EB-SR/DGN
Reference File:
19-130-AMV/DGN

PALM BEACH HARBOR, FLORIDA
**20 EXAMINATION SURVEY FY19
25, 33, 35, 37 & 39-FOOT PROJECT**
STA. 0+00 THRU STA. 25+00 ENTRANCE CHANNEL
PLAN

Scale: AS SHOWN
Drawing no. **2**
SHEET 02 OF 05



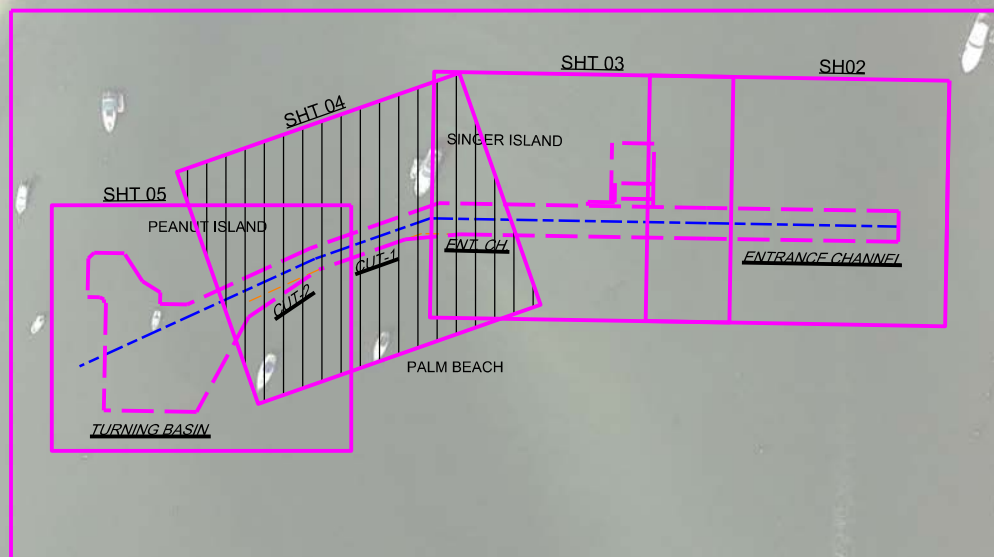
AIDS TO NAVIGATION	PLANE COORDINATES		LATITUDE	LONGITUDE
	X	Y		
LA BUOY 2 (0349)	974.767	888.091	26°46'24.89"	80°12'50.4"



NOTES:
1. REFER TO SURVEY NO. 19-130.
2. SEE SHEET NO. 1 FOR SURVEY NOTES.

10 9 8 7 6 5 4 3 2 1
F
E
D
C
B
A

AIDS TO NAVIGATION	PLANE COORDINATES		LATITUDE	LONGITUDE
	X	Y		
LT-5 (03/19)	970.640	887.412	26°46'18.47"	80°02'10.30"
LT_BUOY-6 (03/19)	970.652	887.900	26°46'23.31"	80°02'10.12"
LT_BUOY-7 (03/19)	969.956	887.389	26°46'18.30"	80°02'17.85"
LT-8 (03/19)	969.309	887.608	26°46'20.52"	80°02'24.97"
LT-9 (03/19)	968.805	886.912	26°46'13.66"	80°02'30.58"
LT-10 (03/19)	968.214	887.181	26°46'16.36"	80°02'37.08"



PEANUT ISLAND

P.I. STA. 76+93.27 CUT-1
P.I. STA. 76+93.27 CUT-2

P.I. STA. 61+01.45 ENTRANCE CHANNEL
P.I. STA. 61+01.45 CUT-1

MATCHLINE SHEET NO. 5 STA. 86+00

MATCHLINE SHEET NO. 3 STA. 56+00

RGE 0
RGE 150
RGE 300
RGE VARIES

RGE 0
RGE 200
RGE 400

CUT-2


CUT-1

ENTRANCE CHANNEL

TIDE STAFF AT 'A 310'

GRAPHIC SCALE
0 100' 200'

NOTES:
1. REFER TO SURVEY NO. 19-130.
2. SEE SHEET NO. 1 FOR SURVEY NOTES.



US Army Corps of Engineers
Jacksonville District
SAFETY ON THIS JOB
DEPENDS ON YOU

DEPARTMENT OF THE ARMY
JACKSONVILLE DISTRICT, CORPS OF ENGINEERS
JACKSONVILLE, FLORIDA

Checked By: GHR
Designed By: WRM
Drawn By: WRM
In Charge: WRM
Date: MAR 2019

19-130A-001.DGN
19-130A-002.DGN
19-130A-003.DGN
19-130A-004.DGN
19-130A-005.DGN
19-130A-006.DGN
19-130A-007.DGN
19-130A-008.DGN
19-130A-009.DGN
19-130A-010.DGN
19-130A-011.DGN
19-130A-012.DGN
19-130A-013.DGN
19-130A-014.DGN
19-130A-015.DGN
19-130A-016.DGN
19-130A-017.DGN
19-130A-018.DGN
19-130A-019.DGN
19-130A-020.DGN
19-130A-021.DGN
19-130A-022.DGN
19-130A-023.DGN
19-130A-024.DGN
19-130A-025.DGN
19-130A-026.DGN
19-130A-027.DGN
19-130A-028.DGN
19-130A-029.DGN
19-130A-030.DGN
19-130A-031.DGN
19-130A-032.DGN
19-130A-033.DGN
19-130A-034.DGN
19-130A-035.DGN
19-130A-036.DGN
19-130A-037.DGN
19-130A-038.DGN
19-130A-039.DGN
19-130A-040.DGN
19-130A-041.DGN
19-130A-042.DGN
19-130A-043.DGN
19-130A-044.DGN
19-130A-045.DGN
19-130A-046.DGN
19-130A-047.DGN
19-130A-048.DGN
19-130A-049.DGN
19-130A-050.DGN
19-130A-051.DGN
19-130A-052.DGN
19-130A-053.DGN
19-130A-054.DGN
19-130A-055.DGN
19-130A-056.DGN
19-130A-057.DGN
19-130A-058.DGN
19-130A-059.DGN
19-130A-060.DGN
19-130A-061.DGN
19-130A-062.DGN
19-130A-063.DGN
19-130A-064.DGN
19-130A-065.DGN
19-130A-066.DGN
19-130A-067.DGN
19-130A-068.DGN
19-130A-069.DGN
19-130A-070.DGN
19-130A-071.DGN
19-130A-072.DGN
19-130A-073.DGN
19-130A-074.DGN
19-130A-075.DGN
19-130A-076.DGN
19-130A-077.DGN
19-130A-078.DGN
19-130A-079.DGN
19-130A-080.DGN
19-130A-081.DGN
19-130A-082.DGN
19-130A-083.DGN
19-130A-084.DGN
19-130A-085.DGN
19-130A-086.DGN
19-130A-087.DGN
19-130A-088.DGN
19-130A-089.DGN
19-130A-090.DGN
19-130A-091.DGN
19-130A-092.DGN
19-130A-093.DGN
19-130A-094.DGN
19-130A-095.DGN
19-130A-096.DGN
19-130A-097.DGN
19-130A-098.DGN
19-130A-099.DGN
19-130A-100.DGN

PALM BEACH HARBOR, FLORIDA
20 EXAMINATION SURVEY FY19
25, 33, 35, 37 & 39-FOOT PROJECT
STA. 56+00 ENTRANCE CHANNEL THRU STA. 86+00 CUT-2
PLAN

Scale: AS SHOWN
Drawing no. 4
SHEET 04 OF 05

