

PORT EVERGLADES HARBOR BROWARD COUNTY, FLORIDA HYDROGRAPHIC EXAM SURVEY FY19 31, 36, 37, 42 AND 45-FOOT PROJECT

SURVEY NOTES

- REFER TO SURVEY NO. 19-105.
 - ELEVATIONS ARE IN FEET AND TENTHS AND REFER TO THE NOAA REPORTED MEAN LOWER LOW WATER (MLLW) TIDAL DATUM, 1983-2001 EPOCH.
 - TIDAL REDUCTIONS WERE OBTAINED UTILIZING A REAL-TIME KINEMATIC (RTK) GPS AND REFERENCED TO MLLW UTILIZING A HYPACK KINEMATIC TIDE DATUM (KTD) MODEL NAMED: "BROWARD-MIAMIDADE-MONROE-COLLIER_2018_05_02.KTD".
 - ALL ELEVATIONS ARE BELOW THE CHART DATUM UNLESS PRECEDED BY A (+) SIGN.
 - PLANE COORDINATES ARE BASED ON THE TRANSVERSE MERCATOR PROJECTION FOR THE EAST ZONE OF FLORIDA AND REFERENCED TO NORTH AMERICAN DATUM OF 1983 (NAD83).
 - ALL STATIONING REFERS TO THE CENTERLINE OF THE CHANNEL.
 - THIS SURVEY WAS PERFORMED USING REAL-TIME KINEMATIC (RTK) GPS POSITIONING WITH THE FOLLOWING REFERENCE BASE LOCATION:
REFERENCE BASE LOCATED AT "USN NORTH RANGE 2 NO. 5" (OPUS PID: CS4034)
TIDE STAFF SET FROM MONUMENT "872 2957 TIDAL 2" (PID: AD5884)
 - DEPTHS DEPICTED BY THIS SURVEY ARE REFERENCED TO MLLW, TIDAL 1983-2001, AS REPORTED BY THE NATIONAL OCEANIC AND ATMOSPHERIC ADMINISTRATION (NOAA). A MODIFIED VERSION OF NOAA'S VDUTUM MODEL WAS USED TO CALIBRATE TO THE PUBLISHED MLLW HEIGHTS OF THE BENCH MARKS BELOW:

NOAA TIDAL STATION 872-2957, NORTH DANIA SOUND, FL FOR ENTIRE PROJECT
 - VERTICAL MEASUREMENTS WERE MADE USING AN EDGETECH 6205 COMBINED MULTI-BEAM AND SIDESCAN SONAR. SOUNDINGS SHOWN ARE IN HIGH FREQUENCY. TOPOGRAPHIC MEASUREMENTS WERE MADE USING A TRIMBLE R8 RTK GPS.
- | VESSEL | DATE OF SURVEY | CUT |
|--------|----------------|--|
| SB-48 | 26-28 FEB 2019 | ENTRANCE CHANNEL, SP1, SP2, SP3, TURNING BASIN |
| TOPO | 05-06 MAR 2019 | AREA NEAR USCG STATION, AREA NORTH OF ENTRANCE CHANNEL |
- AIDS TO NAVIGATION WERE LOCATED DURING THIS SURVEY.
 - THE INFORMATION DEPICTED ON THIS MAP REPRESENTS THE RESULTS OF SURVEYS MADE ON THE DATES INDICATED ABOVE AND CAN ONLY BE CONSIDERED AS INDICATING THE GENERAL CONDITIONS AT THAT TIME. THIS CHART IS SOLELY FOR THE DISTRIBUTION OF AVAILABLE DEPTHS AT THE TIME OF THE SURVEY.
 - SURVEY ACCURACY PERFORMANCE STANDARDS, QUALITY CONTROL, AND QUALITY ASSURANCE REQUIREMENTS WERE FOLLOWED DURING THIS SURVEY IN ACCORDANCE WITH USACE EM 1110-2-1003, HYDROGRAPHIC SURVEYING, 30 NOV 2013.

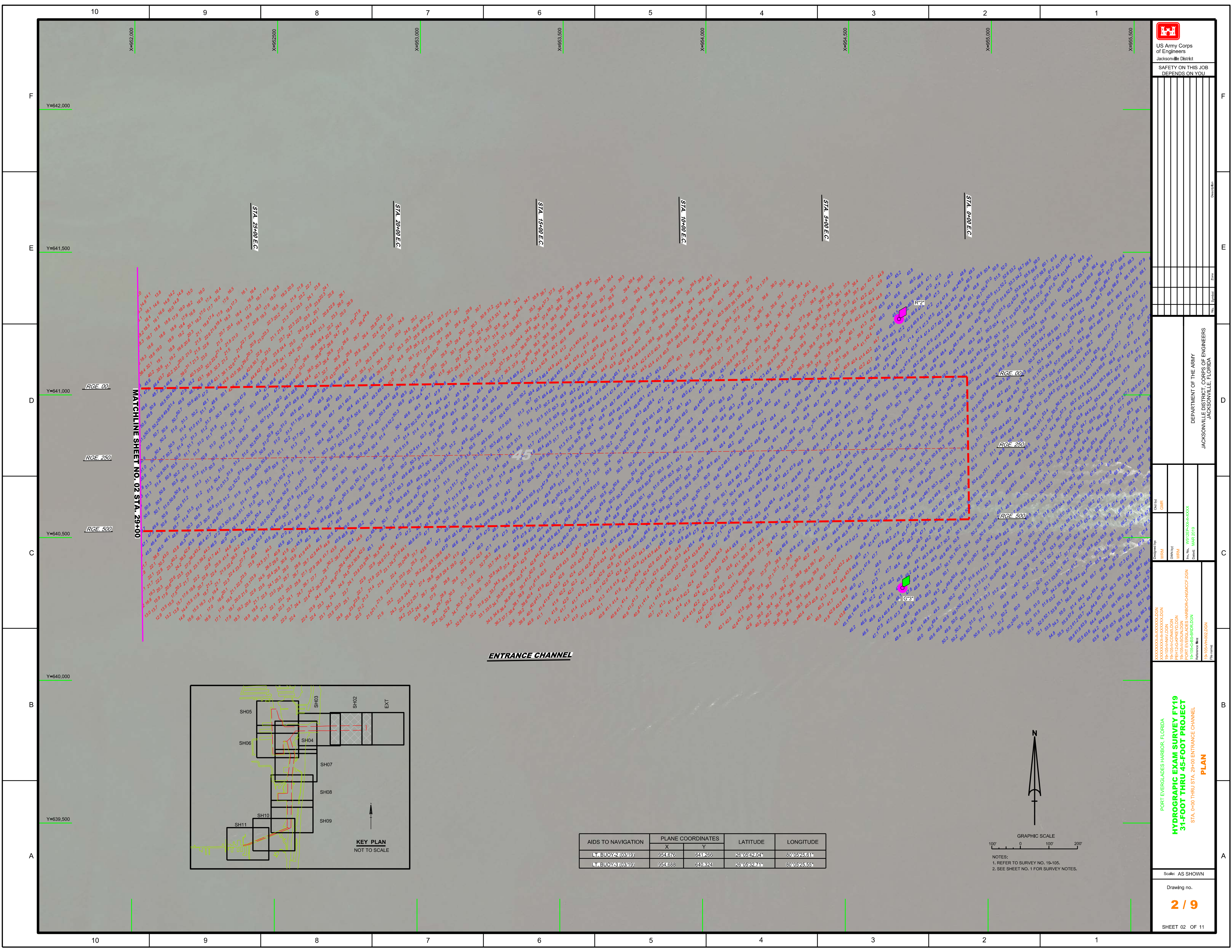
LEGEND	
	MONUMENT
	LIGHTED BEACON
	GREEN DAY BEACON
	RED DAY BEACON
	RED LIGHTED BUOY
	GREEN LIGHTED BUOY
	CAN BUOY
	NUN BUOY
	TIDE STAFF
	PROJECT DEPTH

US Army Corps of Engineers
Jacksonville District
SAFETY ON THIS JOB DEPENDS ON YOU

DESIGNED BY: WRM
DRAWN BY: WRM
CHECKED BY: WRM
DATE: MAR 2019

PROJECT: PORT EVERGLADES HARBOR-CANAL-CUT-FOON
DRAWING: HYDROGRAPHIC EXAM SURVEY FY19 31-FOOT THRU 45-FOOT PROJECT INDEX, LOCATION AND VICINITY MAP

Scale: AS SHOWN
Drawing no. **1 / 9**
SHEET 01 OF 11



US Army Corps of Engineers

 Jacksonville District

 SAFETY ON THIS JOB

 DEPENDS ON YOU

DEPARTMENT OF THE ARMY

 JACKSONVILLE DISTRICT, CORPS OF ENGINEERS

 JACKSONVILLE, FLORIDA

Drawn by: GHR

 Checked by: WRM

 Date: MAR 2019

PORT EVERGLADES HARBOR, FLORIDA

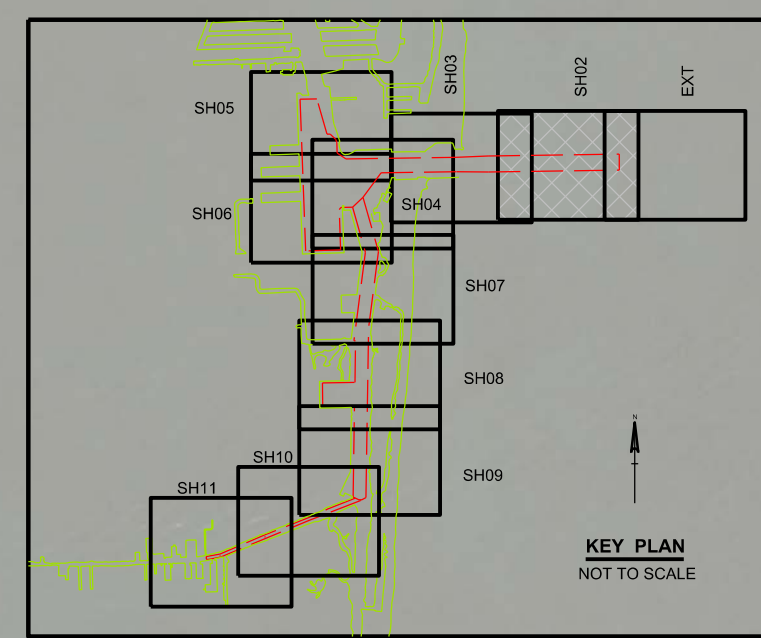
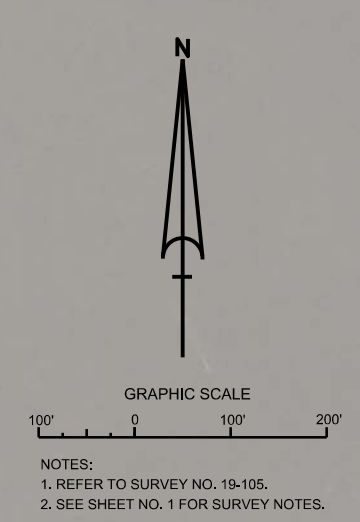
HYDROGRAPHIC EXAM SURVEY FY19

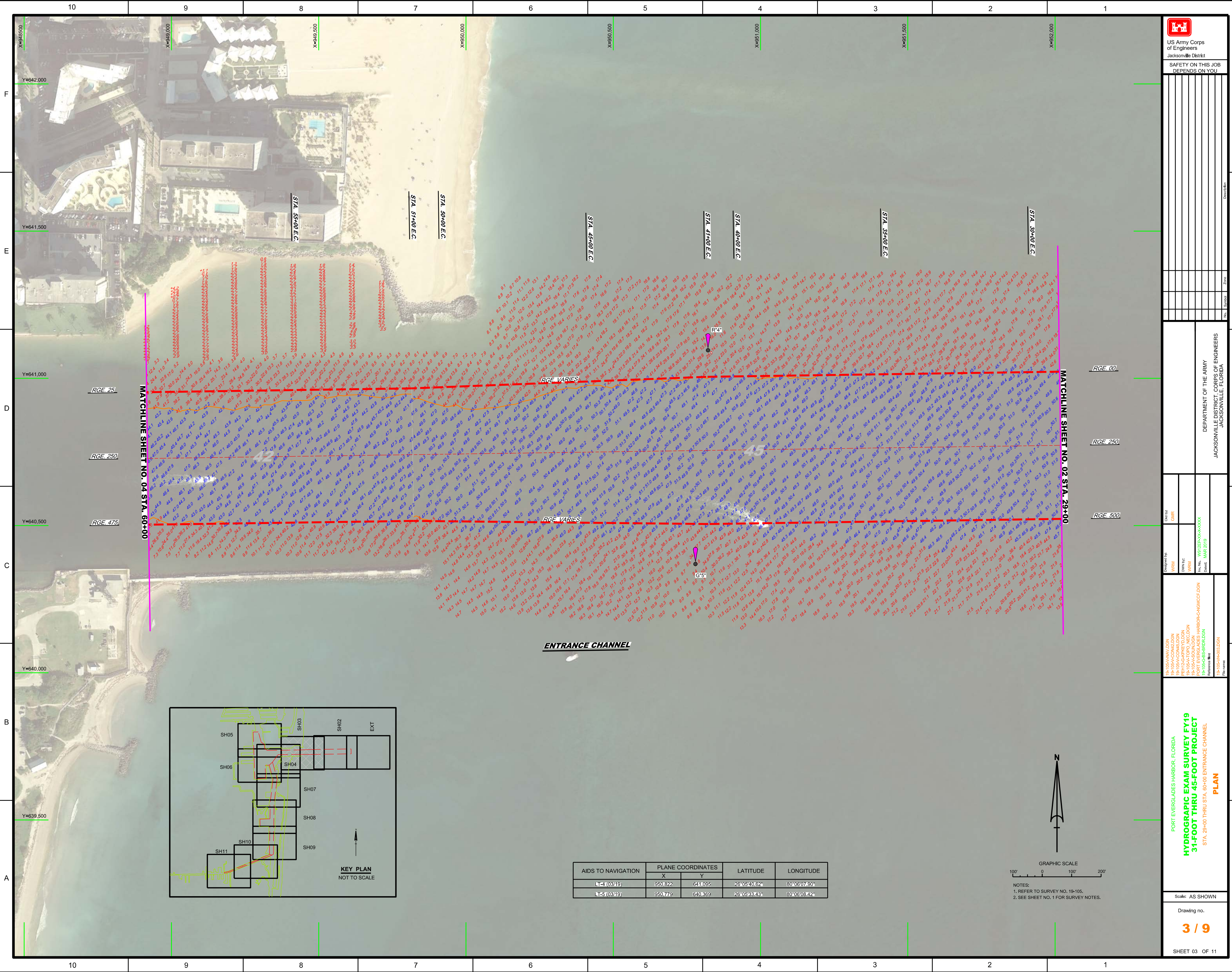
31-FOOT THRU 45-FOOT PROJECT

 STA. 0+00 THRU STA. 29+00 ENTRANCE CHANNEL

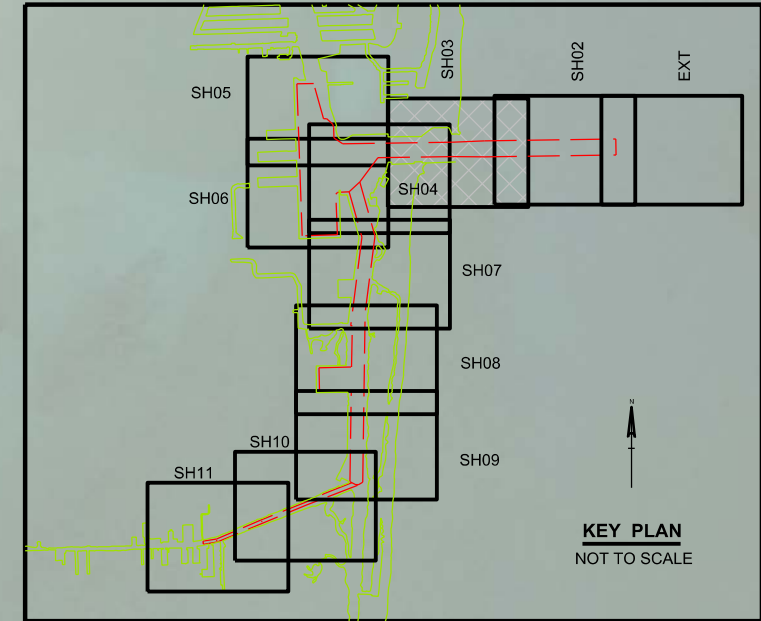
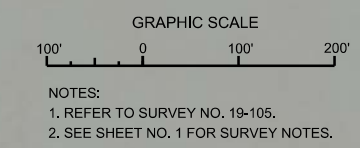
PLAN

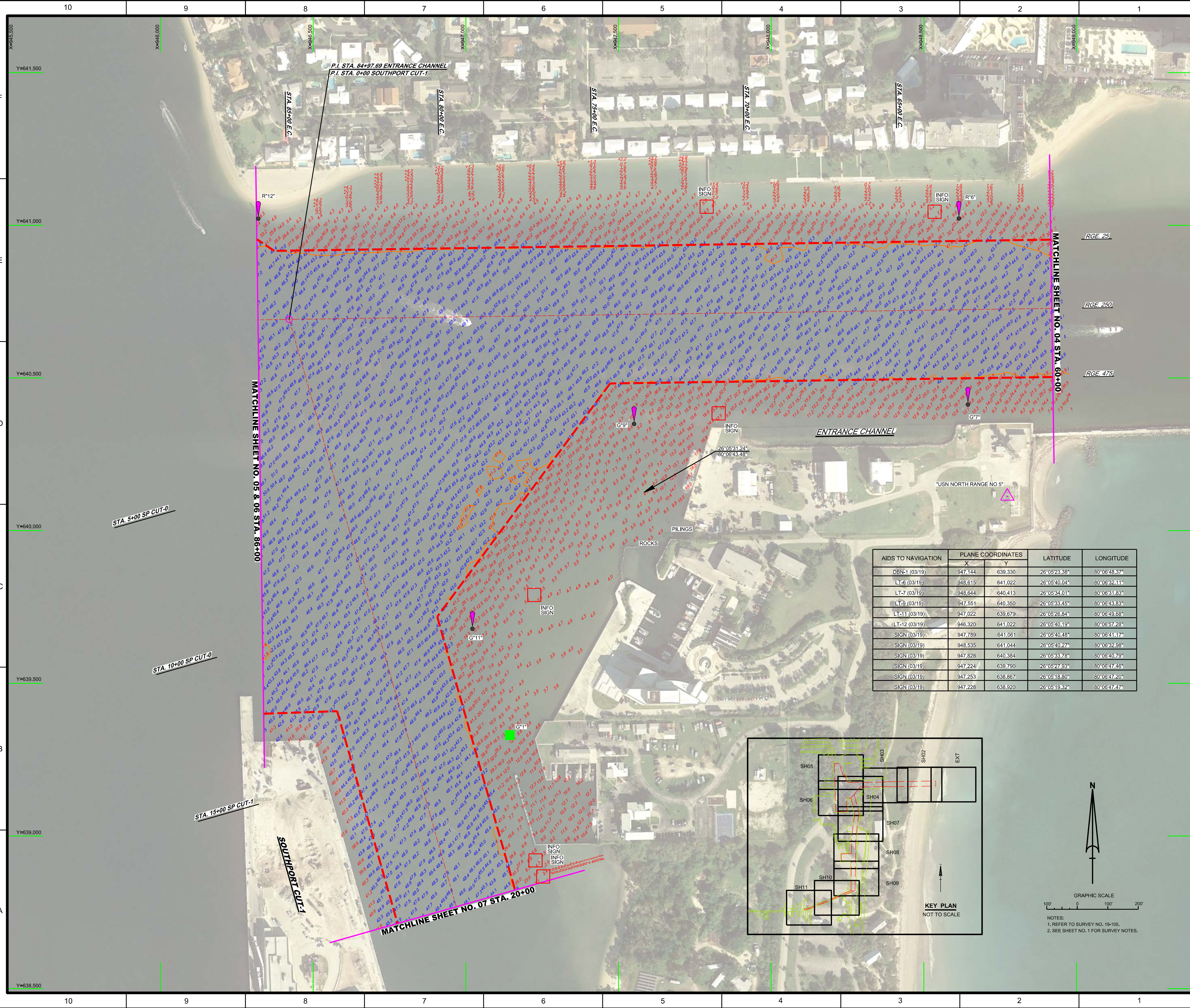
AIDS TO NAVIGATION	PLANE COORDINATES		LATITUDE	LONGITUDE
	X	Y		
LT. BUOY-2 (03/19)	954.676	641.266	26°05'42.04"	80°05'25.81"
LT. BUOY-3 (03/19)	954.688	640.824	26°05'32.71"	80°05'25.55"



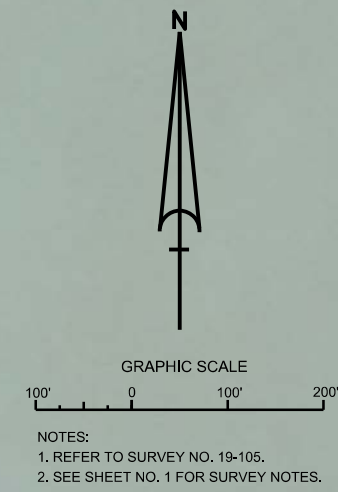
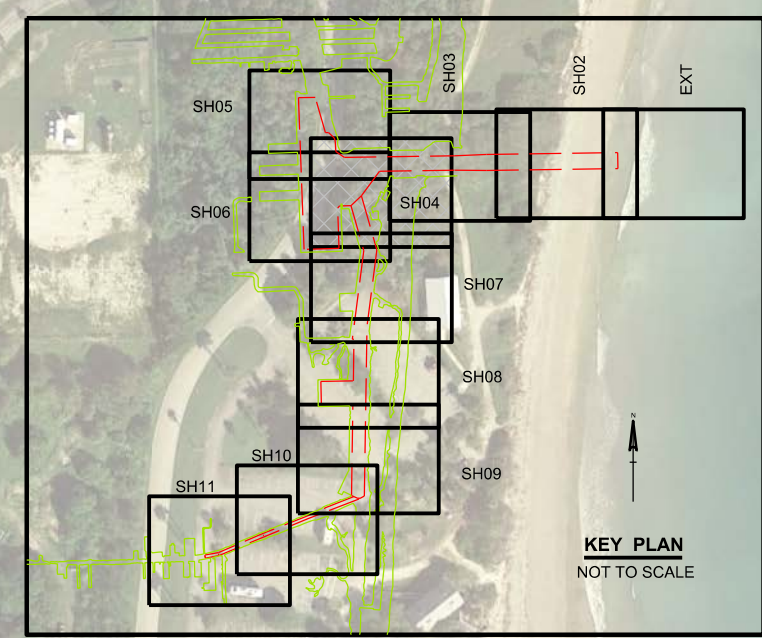


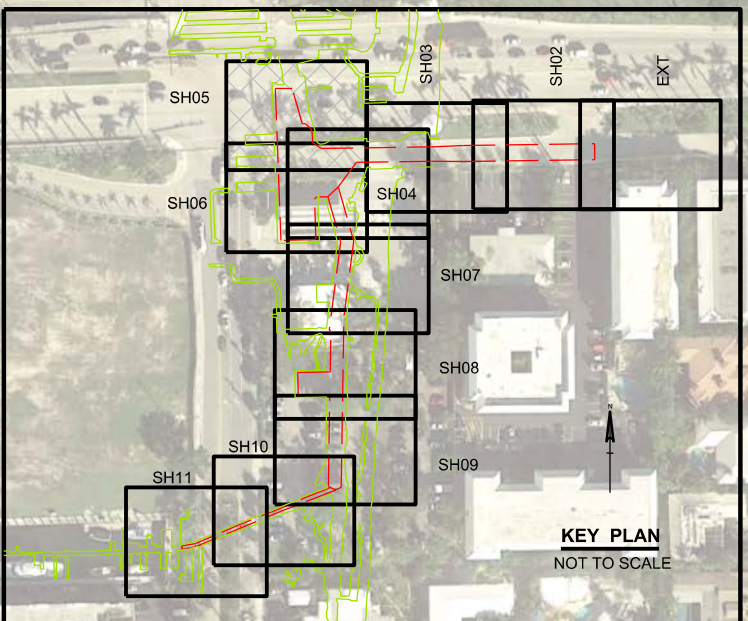
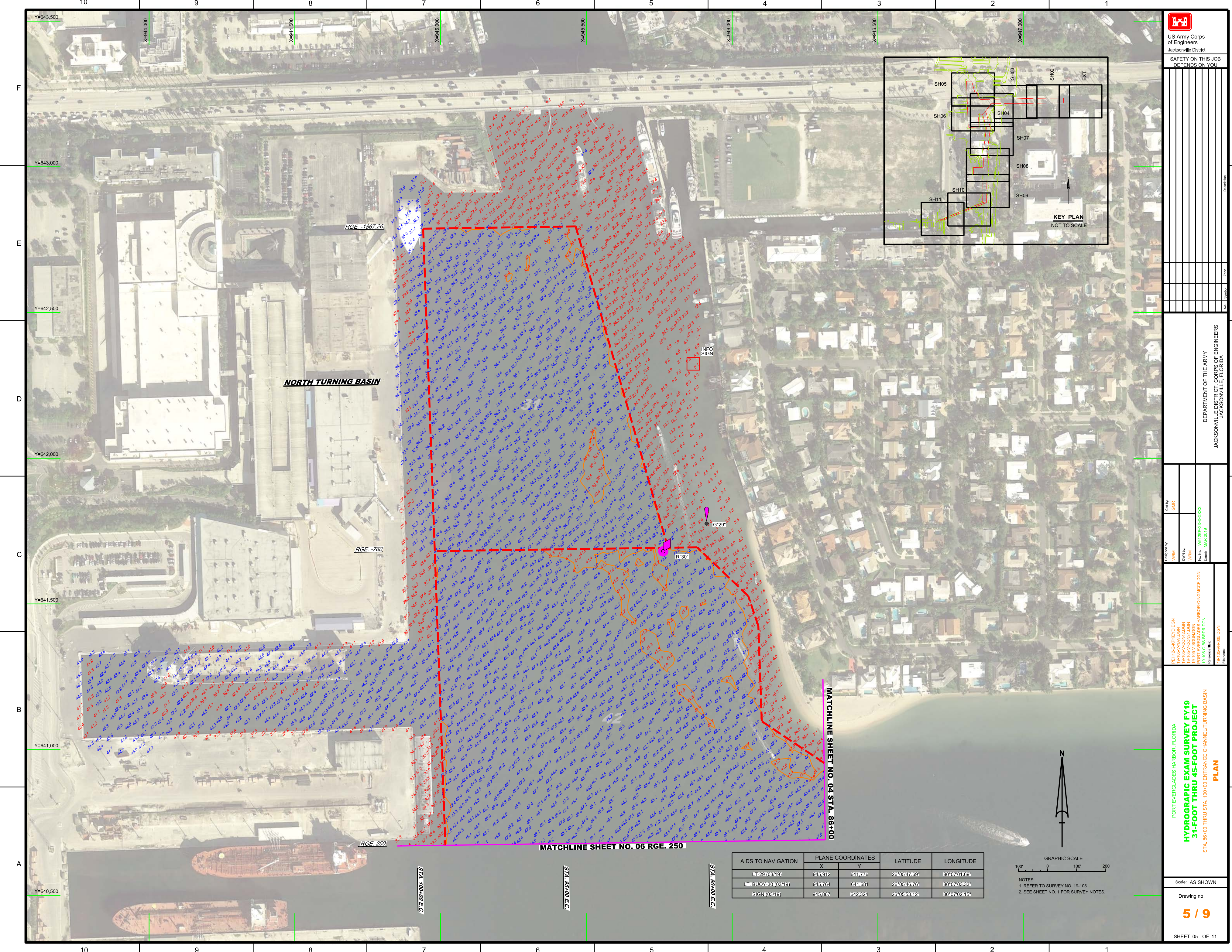
AIDS TO NAVIGATION	PLANE COORDINATES		LATITUDE	LONGITUDE
	X	Y		
LT-4 (0319)	950.822	641.095	26°05'40.62"	80°06'07.90"
LT-5 (0319)	950.779	640.369	26°05'33.43"	80°06'08.42"



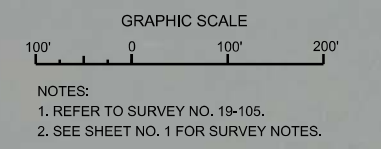


AIDS TO NAVIGATION	PLANE COORDINATES		LATITUDE	LONGITUDE
	X	Y		
DBN-1 (03/19)	947,144	639,330	26°05'23.38"	80°06'48.37"
LT-6 (03/19)	948,615	641,022	26°05'40.04"	80°06'32.11"
LT-7 (03/19)	948,644	640,413	26°05'34.01"	80°06'31.83"
LT-8 (03/19)	947,551	640,350	26°05'33.45"	80°06'43.83"
LT-11 (03/19)	947,022	639,679	26°05'26.84"	80°06'49.68"
LT-12 (03/19)	946,320	641,022	26°05'40.19"	80°06'57.28"
SIGN (03/19)	947,789	641,051	26°05'40.48"	80°06'41.17"
SIGN (03/19)	948,535	641,044	26°05'40.27"	80°06'32.98"
SIGN (03/19)	947,828	640,384	26°05'33.78"	80°06'40.79"
SIGN (03/19)	947,224	639,790	26°05'27.93"	80°06'47.46"
SIGN (03/19)	947,253	638,867	26°05'18.80"	80°06'47.20"
SIGN (03/19)	947,228	638,920	26°05'19.32"	80°06'47.47"





AIDS TO NAVIGATION	PLANE COORDINATES		LATITUDE	LONGITUDE
	X	Y		
(M) 29 (03/49)	945.912	641.776	26°05'47.69"	80°07'01.69"
(L) BUOY 30 (03/49)	945.764	641.681	26°05'46.76"	80°07'03.33"
(S) GN (03/49)	945.887	642.824	26°05'53.12"	80°07'02.15"



US Army Corps of Engineers
Jacksonville District

**SAFETY ON THIS JOB
DEPENDS ON YOU**

DEPARTMENT OF THE ARMY
JACKSONVILLE DISTRICT, CORPS OF ENGINEERS
JACKSONVILLE, FLORIDA

Designed by: WRM
Checked by: GHR
Drawn by: WRM
Field No.: WR225A-06-000003
Project: PORT EVERGLADES HARBOR CANAL PROJECT
Reference Map: 19-105A-HR0402DN
Date: MAR 2019

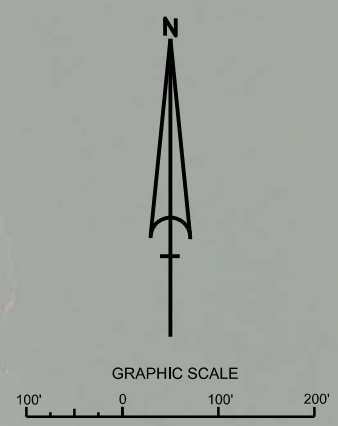
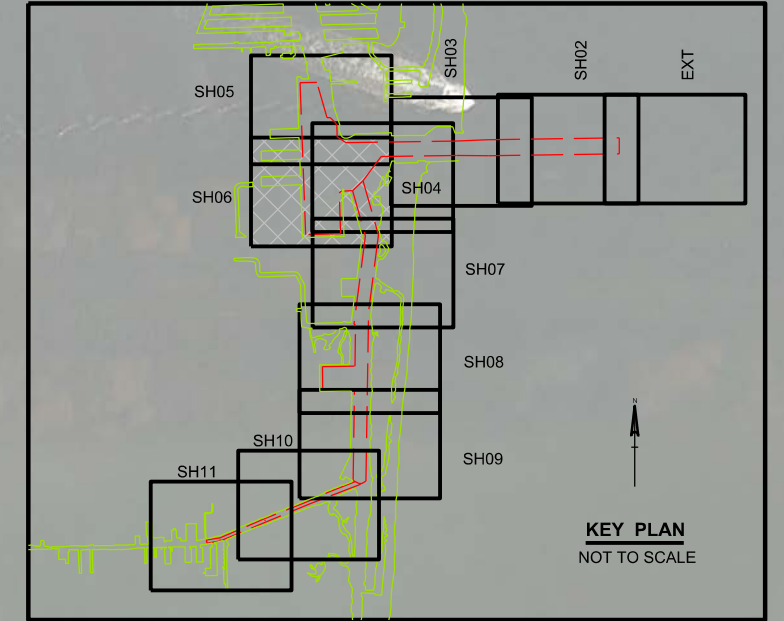
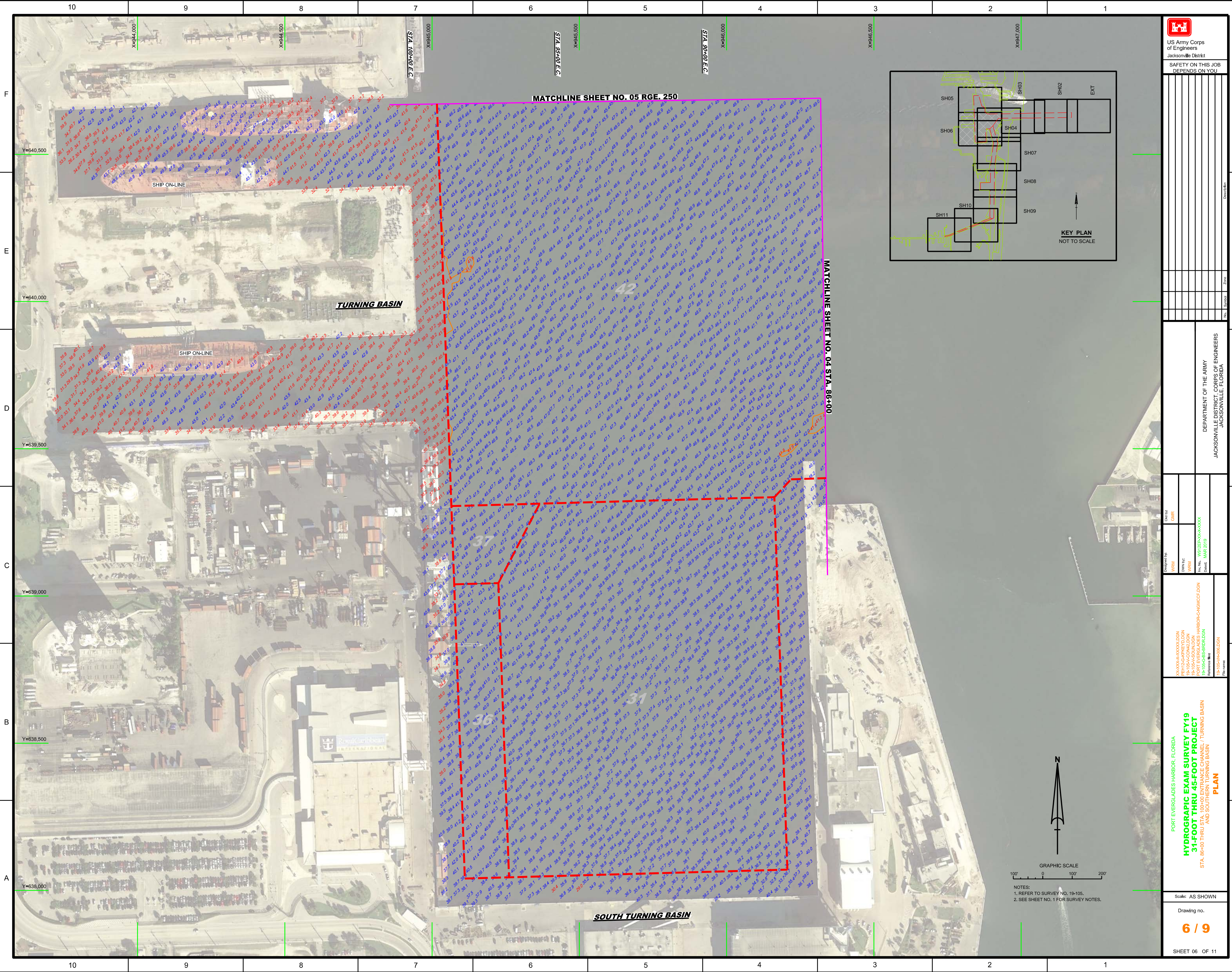
PLAN

PORT EVERGLADES HARBOR, FLORIDA
HYDROGRAPHIC EXAM SURVEY FY19
31-FOOT THRU 45-FOOT PROJECT
STA. 86+00 THRU STA. 100+00 ENTRANCE CHANNEL TURNING BASIN

Scale: AS SHOWN

Drawing no. **5 / 9**

SHEET 05 OF 11



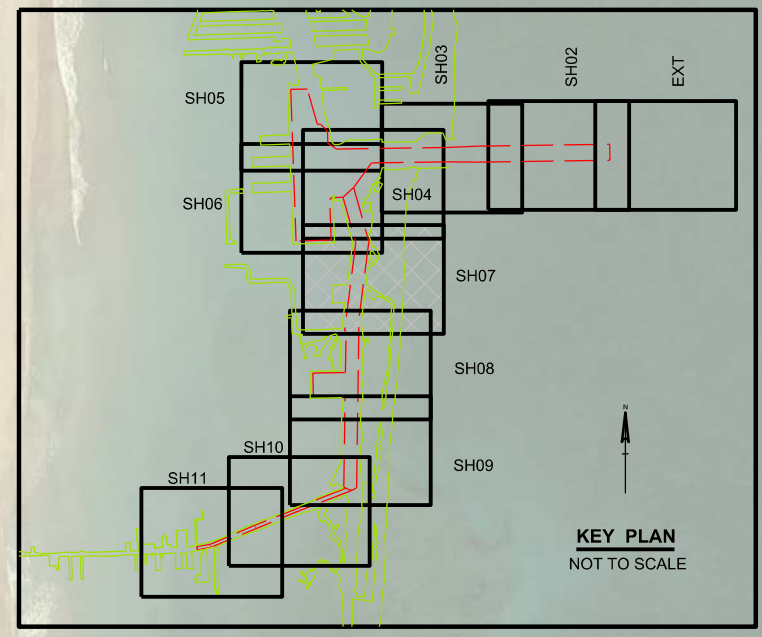
NOTES:
 1. REFER TO SURVEY NO. 19-105.
 2. SEE SHEET NO. 1 FOR SURVEY NOTES.

<p>US Army Corps of Engineers Jacksonville District</p>	
<p>SAFETY ON THIS JOB DEPENDS ON YOU</p>	
<p>Designed by: WRM</p>	<p>Checked by: GHR</p>
<p>Drawn by: WRM</p>	<p>Reviewed by: WRM</p>
<p>Project: PORT EVERGLADES HARBOR/CANAL/CP/DCM</p>	<p>Date: MAR 2019</p>
<p>PORT EVERGLADES HARBOR, FLORIDA HYDROGRAPHIC EXAM SURVEY FY19 31-FOOT THRU 45-FOOT PROJECT STA. 06+00 THRU STA. 100+00 ENTRANCE CHANNEL / TURNING BASIN AND SOUTHERN TURNING BASIN PLAN</p>	
<p>Scale: AS SHOWN</p>	
<p>Drawing no. 6 / 9</p>	
<p>SHEET 06 OF 11</p>	

MATCHLINE SHEET NO. 06 STA. 20+00

MATCHLINE SHEET NO. 08 STA. 21+00

US Army Corps of Engineers
Jacksonville District
SAFETY ON THIS JOB
DEPENDS ON YOU



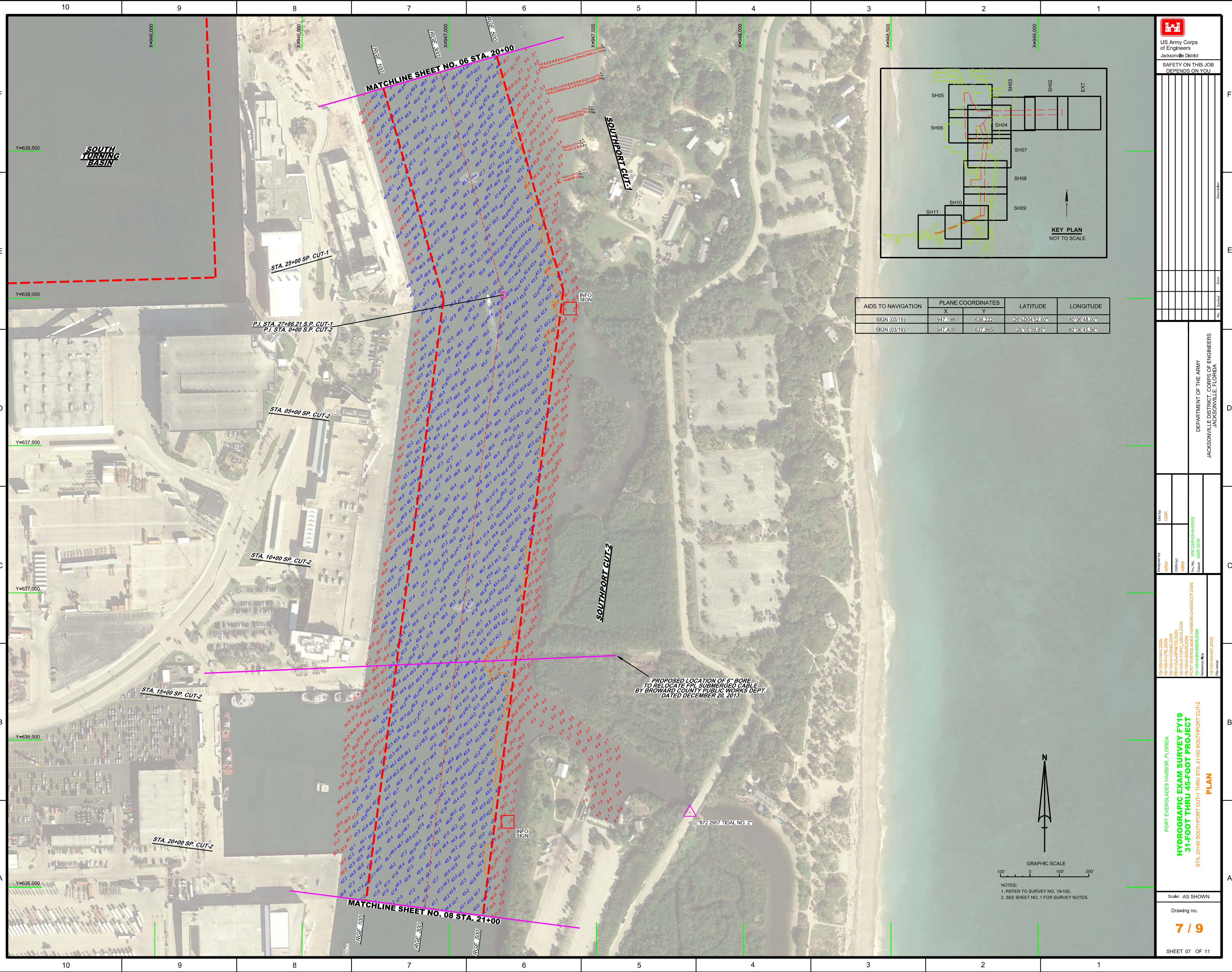
AIDS TO NAVIGATION	PLANE COORDINATES		LATITUDE	LONGITUDE
	X	Y		
SIGN (03/19)	947,198	636,222	26°04'52.60"	80°06'48.00"
SIGN (03/19)	947,409	637,965	26°05'09.85"	80°06'45.56"

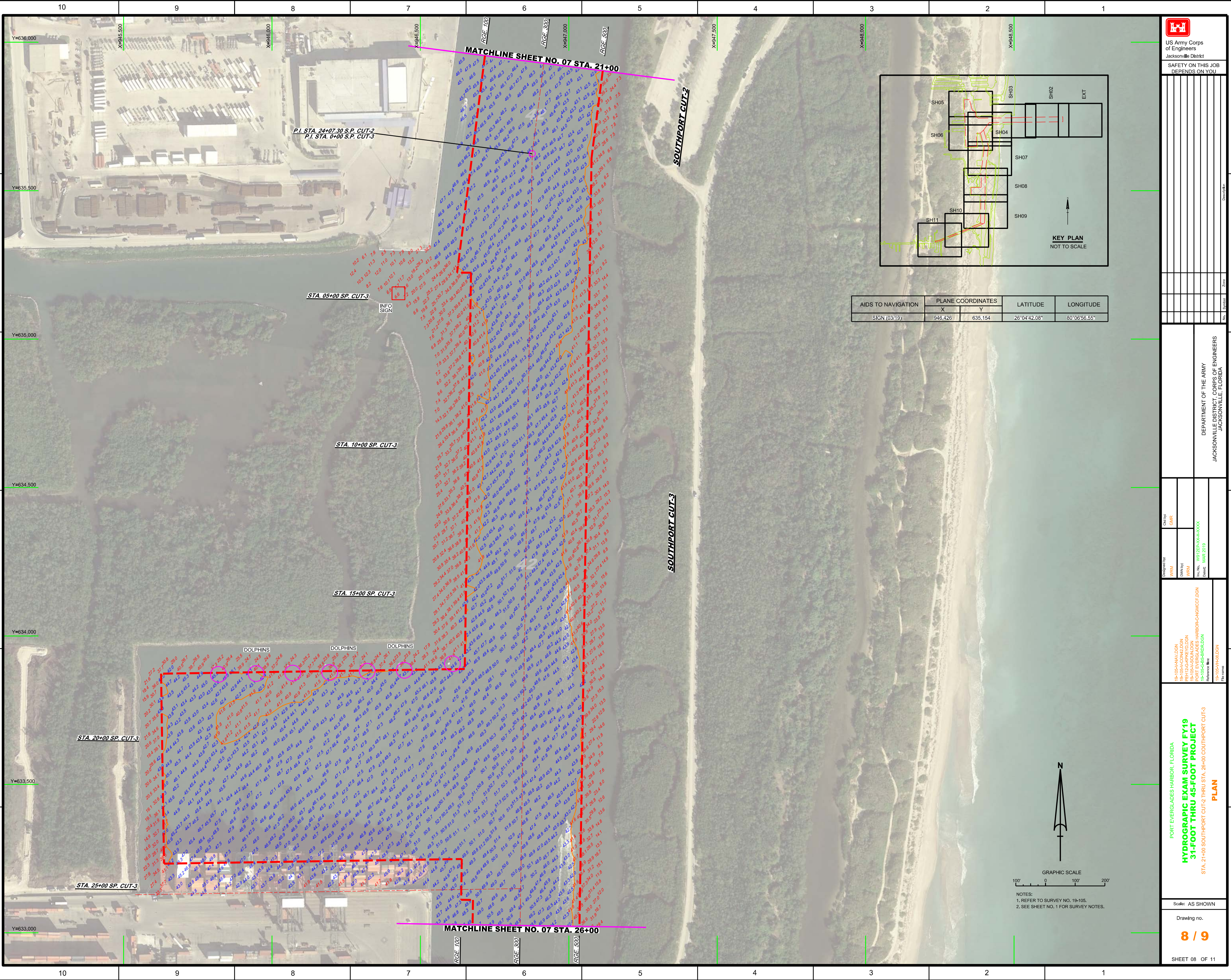
DEPARTMENT OF THE ARMY
JACKSONVILLE DISTRICT, CORPS OF ENGINEERS
JACKSONVILLE, FLORIDA

Call by: GHR
Designed by: WRM
Drawn by: WRM
In Charge: WRM
Checked: WRM
Date: MAR 2019

PORT EVERGLADES HARBOR, FLORIDA
HYDROGRAPHIC EXAM SURVEY FY19
31-FOOT THRU 45-FOOT PROJECT
STA. 20+00 SOUTHPORT CUT-1 THRU STA. 21+00 SOUTHPORT CUT-2
PLAN

Scale: AS SHOWN
Drawing no.
7 / 9
SHEET 07 OF 11





US Army Corps of Engineers
Jacksonville District
SAFETY ON THIS JOB
DEPENDS ON YOU

DEPARTMENT OF THE ARMY
JACKSONVILLE DISTRICT, CORPS OF ENGINEERS
JACKSONVILLE, FLORIDA

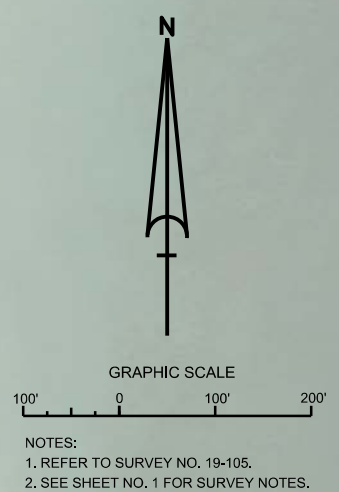
PORT EVERGLADES HARBOR, FLORIDA
**HYDROGRAPHIC EXAM SURVEY FY19
31-FOOT THRU 45-FOOT PROJECT**
STA. 21+00 SOUTHPORT CUT-2 THRU STA. 26+00 SOUTHPORT CUT-3
PLAN

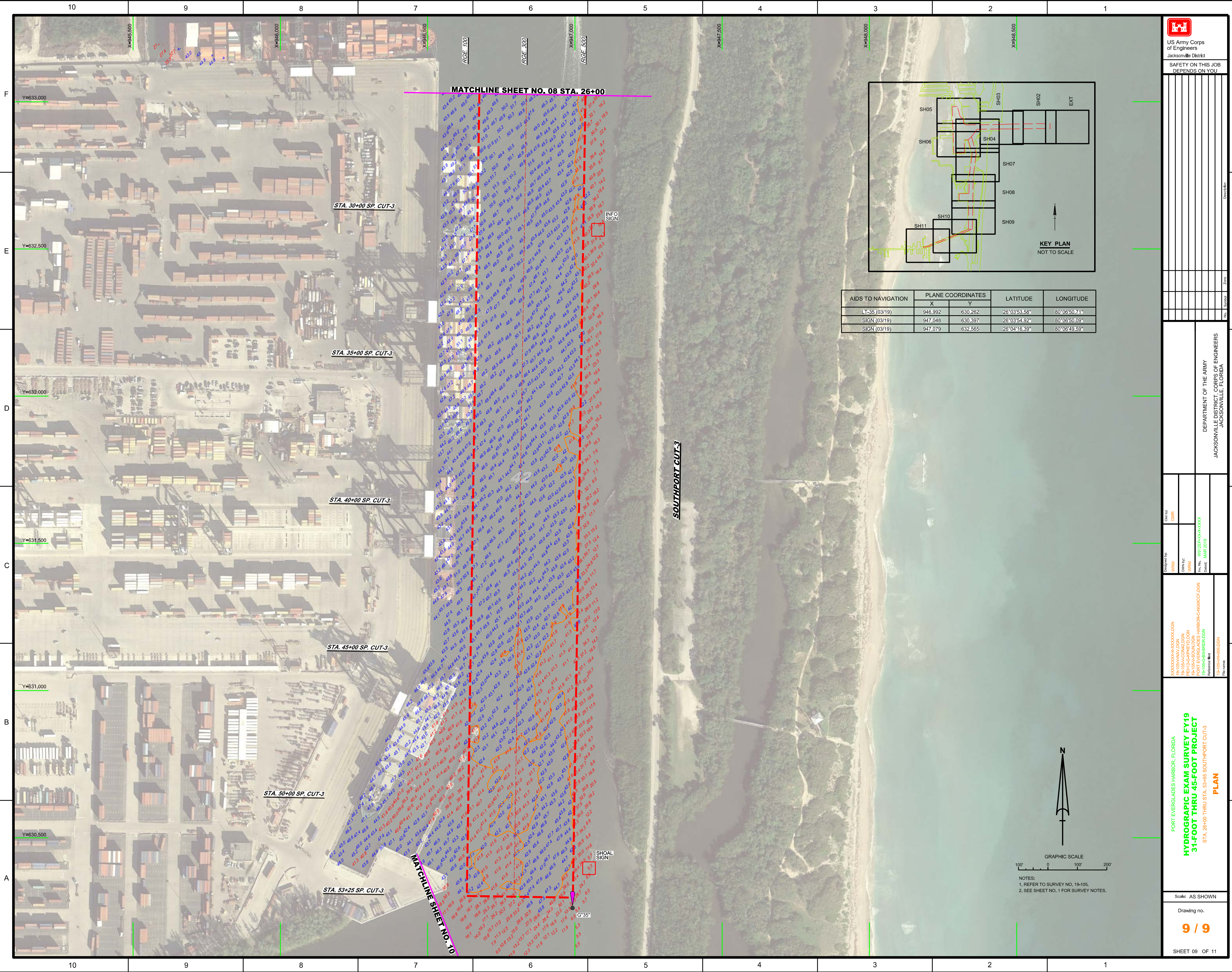
Scale: AS SHOWN
Drawing no. **8 / 9**
SHEET 08 OF 11

Call by: GHR
Designed by: WRM
Drawn by: WRM
Checked by: WRM
Date: MAR 2019

Reference files:
19-105A-HV.DGN
19-105A-CO-02.DGN
19-105A-PR-01.DGN
19-105A-PR-02.DGN
19-105A-PR-03.DGN
19-105A-PR-04.DGN
19-105A-PR-05.DGN
19-105A-PR-06.DGN
19-105A-PR-07.DGN
19-105A-PR-08.DGN
19-105A-PR-09.DGN
19-105A-PR-10.DGN
19-105A-PR-11.DGN
19-105A-PR-12.DGN
19-105A-PR-13.DGN
19-105A-PR-14.DGN
19-105A-PR-15.DGN
19-105A-PR-16.DGN
19-105A-PR-17.DGN
19-105A-PR-18.DGN
19-105A-PR-19.DGN
19-105A-PR-20.DGN
19-105A-PR-21.DGN
19-105A-PR-22.DGN
19-105A-PR-23.DGN
19-105A-PR-24.DGN
19-105A-PR-25.DGN
19-105A-PR-26.DGN
19-105A-PR-27.DGN
19-105A-PR-28.DGN
19-105A-PR-29.DGN
19-105A-PR-30.DGN
19-105A-PR-31.DGN
19-105A-PR-32.DGN
19-105A-PR-33.DGN
19-105A-PR-34.DGN
19-105A-PR-35.DGN
19-105A-PR-36.DGN
19-105A-PR-37.DGN
19-105A-PR-38.DGN
19-105A-PR-39.DGN
19-105A-PR-40.DGN
19-105A-PR-41.DGN
19-105A-PR-42.DGN
19-105A-PR-43.DGN
19-105A-PR-44.DGN
19-105A-PR-45.DGN
19-105A-PR-46.DGN
19-105A-PR-47.DGN
19-105A-PR-48.DGN
19-105A-PR-49.DGN
19-105A-PR-50.DGN
19-105A-PR-51.DGN
19-105A-PR-52.DGN
19-105A-PR-53.DGN
19-105A-PR-54.DGN
19-105A-PR-55.DGN
19-105A-PR-56.DGN
19-105A-PR-57.DGN
19-105A-PR-58.DGN
19-105A-PR-59.DGN
19-105A-PR-60.DGN
19-105A-PR-61.DGN
19-105A-PR-62.DGN
19-105A-PR-63.DGN
19-105A-PR-64.DGN
19-105A-PR-65.DGN
19-105A-PR-66.DGN
19-105A-PR-67.DGN
19-105A-PR-68.DGN
19-105A-PR-69.DGN
19-105A-PR-70.DGN
19-105A-PR-71.DGN
19-105A-PR-72.DGN
19-105A-PR-73.DGN
19-105A-PR-74.DGN
19-105A-PR-75.DGN
19-105A-PR-76.DGN
19-105A-PR-77.DGN
19-105A-PR-78.DGN
19-105A-PR-79.DGN
19-105A-PR-80.DGN
19-105A-PR-81.DGN
19-105A-PR-82.DGN
19-105A-PR-83.DGN
19-105A-PR-84.DGN
19-105A-PR-85.DGN
19-105A-PR-86.DGN
19-105A-PR-87.DGN
19-105A-PR-88.DGN
19-105A-PR-89.DGN
19-105A-PR-90.DGN
19-105A-PR-91.DGN
19-105A-PR-92.DGN
19-105A-PR-93.DGN
19-105A-PR-94.DGN
19-105A-PR-95.DGN
19-105A-PR-96.DGN
19-105A-PR-97.DGN
19-105A-PR-98.DGN
19-105A-PR-99.DGN
19-105A-PR-100.DGN

AIDS TO NAVIGATION	PLANE COORDINATES		LATITUDE	LONGITUDE
	X	Y		
SIGN (03/19)	946,426	635,154	26°04'42.08"	80°06'56.55"





MATCHLINE SHEET NO. 08 STA. 26+00

STA. 30+00 SP. CUT-3

STA. 35+00 SP. CUT-3

STA. 40+00 SP. CUT-3

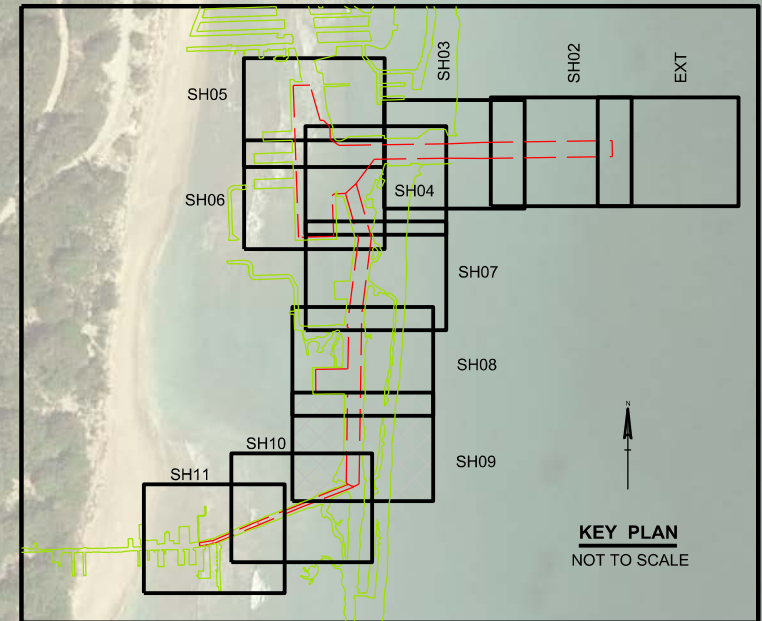
STA. 45+00 SP. CUT-3

STA. 50+00 SP. CUT-3

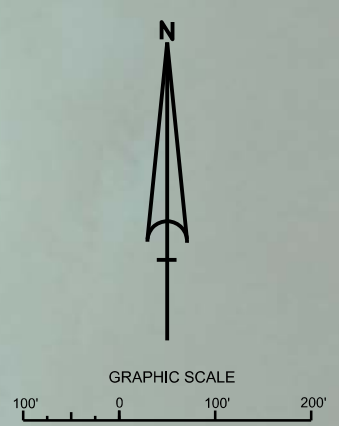
STA. 53+25 SP. CUT-3

MATCHLINE SHEET NO. 10


SOUTHPORT CUT-3



AIDS TO NAVIGATION	PLANE COORDINATES		LATITUDE	LONGITUDE
	X	Y		
LT-35 (03/19)	946,992	630,262	26°03'53.58"	80°06'50.71"
SIGN (03/19)	947,048	630,397	26°03'54.92"	80°06'50.09"
SIGN (03/19)	947,079	632,565	26°04'16.39"	80°06'49.59"



NOTES:
 1. REFER TO SURVEY NO. 19-105.
 2. SEE SHEET NO. 1 FOR SURVEY NOTES.



US Army Corps of Engineers
 Jacksonville District
 SAFETY ON THIS JOB
 DEPENDS ON YOU

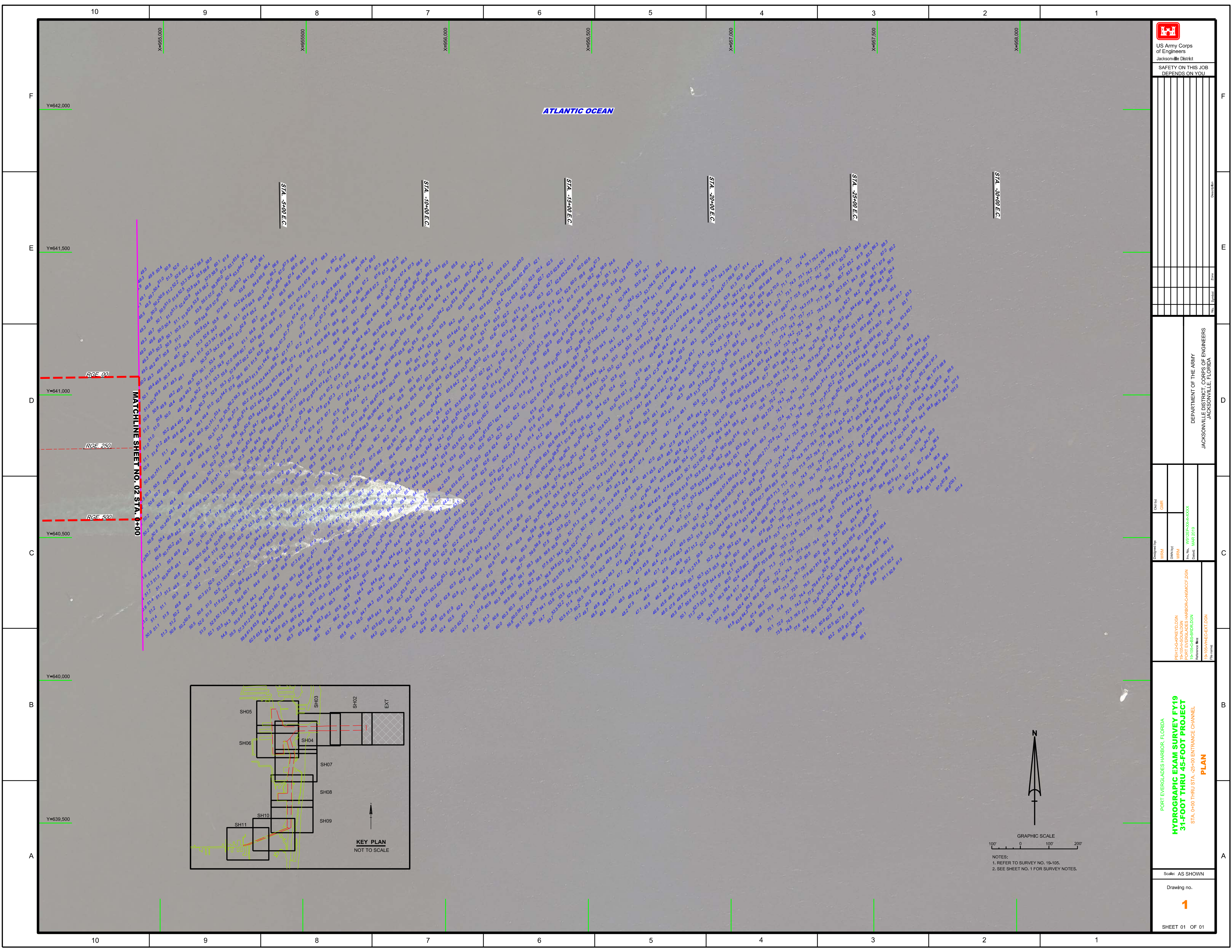
DEPARTMENT OF THE ARMY
 JACKSONVILLE DISTRICT, CORPS OF ENGINEERS
 JACKSONVILLE, FLORIDA

PORT EVERGLADES HARBOR, FLORIDA
HYDROGRAPHIC EXAM SURVEY FY19
31-FOOT THRU 45-FOOT PROJECT
 STA. 26+00 THRU STA. 53+66 SOUTHPORT CUT-3
PLAN

Scale: AS SHOWN

Drawing no.
9 / 9

SHEET 09 OF 11



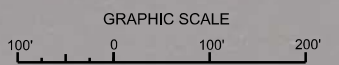
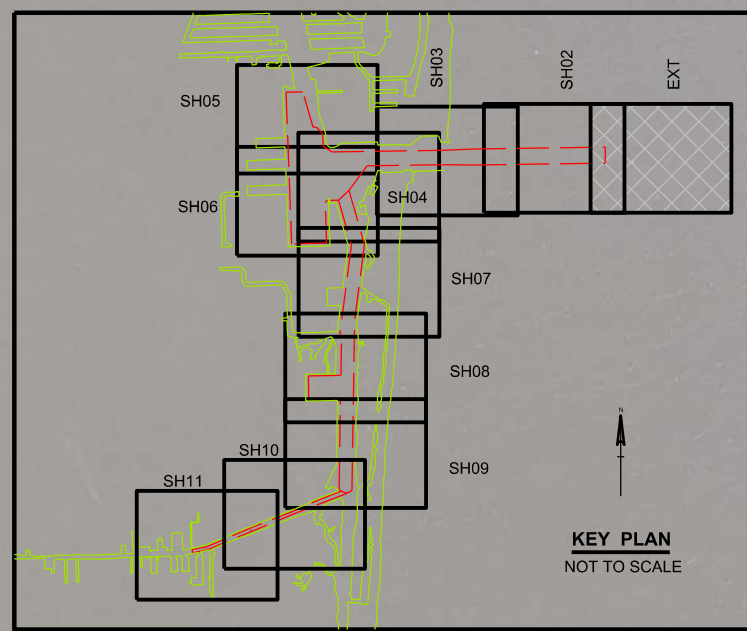
ATLANTIC OCEAN

MATCHLINE SHEET NO. 02 STA. 0+00

RGE 00

RGE 250

RGE 500



NOTES:
1. REFER TO SURVEY NO. 19-105.
2. SEE SHEET NO. 1 FOR SURVEY NOTES.

 US Army Corps of Engineers Jacksonville District SAFETY ON THIS JOB DEPENDS ON YOU	
DESIGNED BY: WRM CHECKED BY: GHR DRAWN BY: WRM DATE: MAR 2019	PROJECT: PORT EVERGLADES HARBOR CANAL PROJECT SHEET: 31-FOOT THRU 45-FOOT PROJECT STA. 0+00 THRU STA. 25+00 ENTRANCE CHANNEL PLAN
DEPARTMENT OF THE ARMY JACKSONVILLE DISTRICT, CORPS OF ENGINEERS JACKSONVILLE, FLORIDA	
SHEET 01 OF 01	