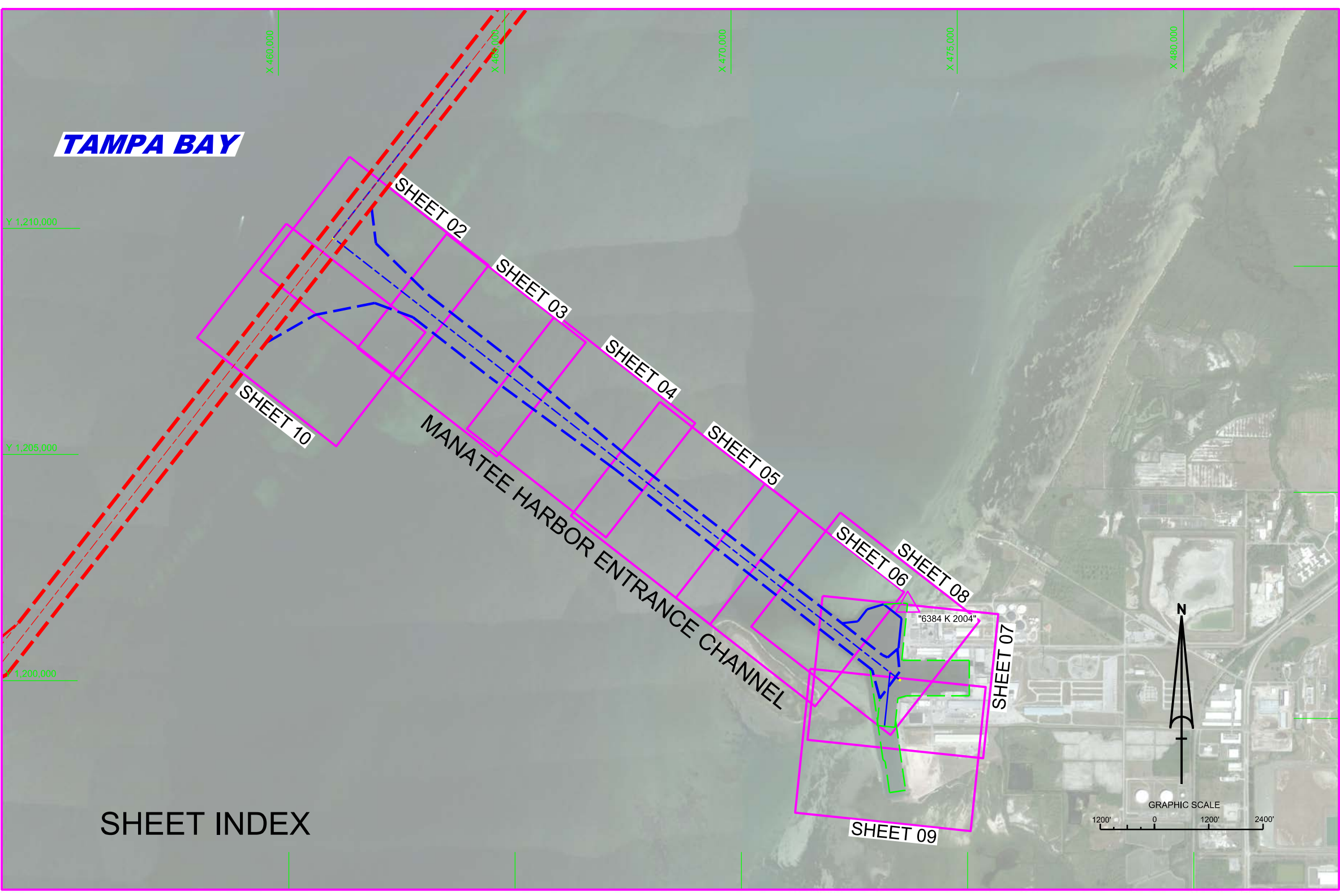


MANATEE HARBOR (TAMPA HARBOR ZONE 10) MANATEE COUNTY, FLORIDA EXAMINATION SURVEY FY19 40-FOOT PROJECT



- SURVEY NOTES**
- REFER TO SURVEY NO. 19-098.
 - ALL ELEVATIONS ARE BELOW THE CHART DATUM UNLESS PRECEDED BY A (+) SIGN.
 - PLANE COORDINATES ARE BASED ON THE TRANSVERSE MERCATOR PROJECTION FOR THE WEST ZONE OF FLORIDA AND REFERENCED TO THE NORTH AMERICAN DATUM OF 1983 (NAD83).
 - DEPTHS DEPICTED BY THIS SURVEY ARE REFERENCED TO MLLW, TIDAL EPOCH 1983-2001 AS REPORTED BY THE NATIONAL OCEANIC AND ATMOSPHERIC ADMINISTRATION (NOAA). NOAA'S DATUM MODEL WAS USED AND CALIBRATED TO THE PUBLISHED MLLW HEIGHTS OF THE BENCHMARKS ASSOCIATED WITH THE TIDE GAUGE SITE SPECIFIED BELOW:
NOAA TIDAL STATION 872-6384, PORT MANATEE, TAMPA BAY, FL
 - TIDAL REDUCTIONS WERE OBTAINED UTILIZING A REAL-TIME KINEMATIC (RTK) GPS AND REFERENCED TO MLLW UTILIZING A HYPACK KINEMATIC TIDAL DATUM (KTD) MODEL. KTD FILE NAME IS: "SPC-FL-WEST-2010-12-07.KTD".
 - ALL STATIONING REFERS TO THE CENTERLINE OF THE CHANNEL.
 - THIS SURVEY WAS PERFORMED USING REAL-TIME KINEMATIC (RTK) GPS POSITIONING WITH THE FOLLOWING REFERENCE BASE LOCATION:
REFERENCE BASE LOCATED AT "6384 K 2004" (OPUS PID: BBBT27)
TIDE STAFF WAS SET IN THE NORTHERN MOST BULKHEAD OF MANATEE HARBOR FROM NOS BM "872 6384 C" (PID: AG7340)
 - VERTICAL MEASUREMENTS WERE MADE USING AN EDGETECH 6205 BATHYMETRY AND SIDE-SCAN SYSTEM AS THE PRIMARY SOUNDER AND A ROSS MODEL 835 SMARTSOUNDER SINGLE-BEAM SYSTEM OPERATING AT 28 AND 200 KHZ FOR SINGLE-BEAM CHECK LINES. ALL SOUNDINGS SHOWN ARE IN HIGH FREQUENCY.
 - AIDS TO NAVIGATION WERE LOCATED DURING THIS SURVEY.
 - THE INFORMATION DEPICTED ON THIS MAP REPRESENTS THE RESULTS OF SURVEYS MADE ON THE DATES INDICATED ABOVE AND CAN ONLY BE CONSIDERED AS INDICATING THE GENERAL CONDITIONS AT THAT TIME. THIS CHART IS SOLELY FOR THE DISTRIBUTION OF AVAILABLE DEPTHS AT THE TIME OF THE SURVEY.
 - SURVEY ACCURACY PERFORMANCE STANDARDS, QUALITY CONTROL, AND QUALITY ASSURANCE REQUIREMENTS WERE FOLLOWED DURING THIS SURVEY IN ACCORDANCE WITH USACE EM 1110-2-1003, HYDROGRAPHIC SURVEYING, 30 NOV 2013.
- | VESSEL | DATE OF SURVEY | CUT |
|-----------|----------------|--------------|
| R. WITMER | 29 JAN 2019 | PORT MANATEE |
| R. WITMER | 01 FEB 2019 | PORT MANATEE |

LEGEND

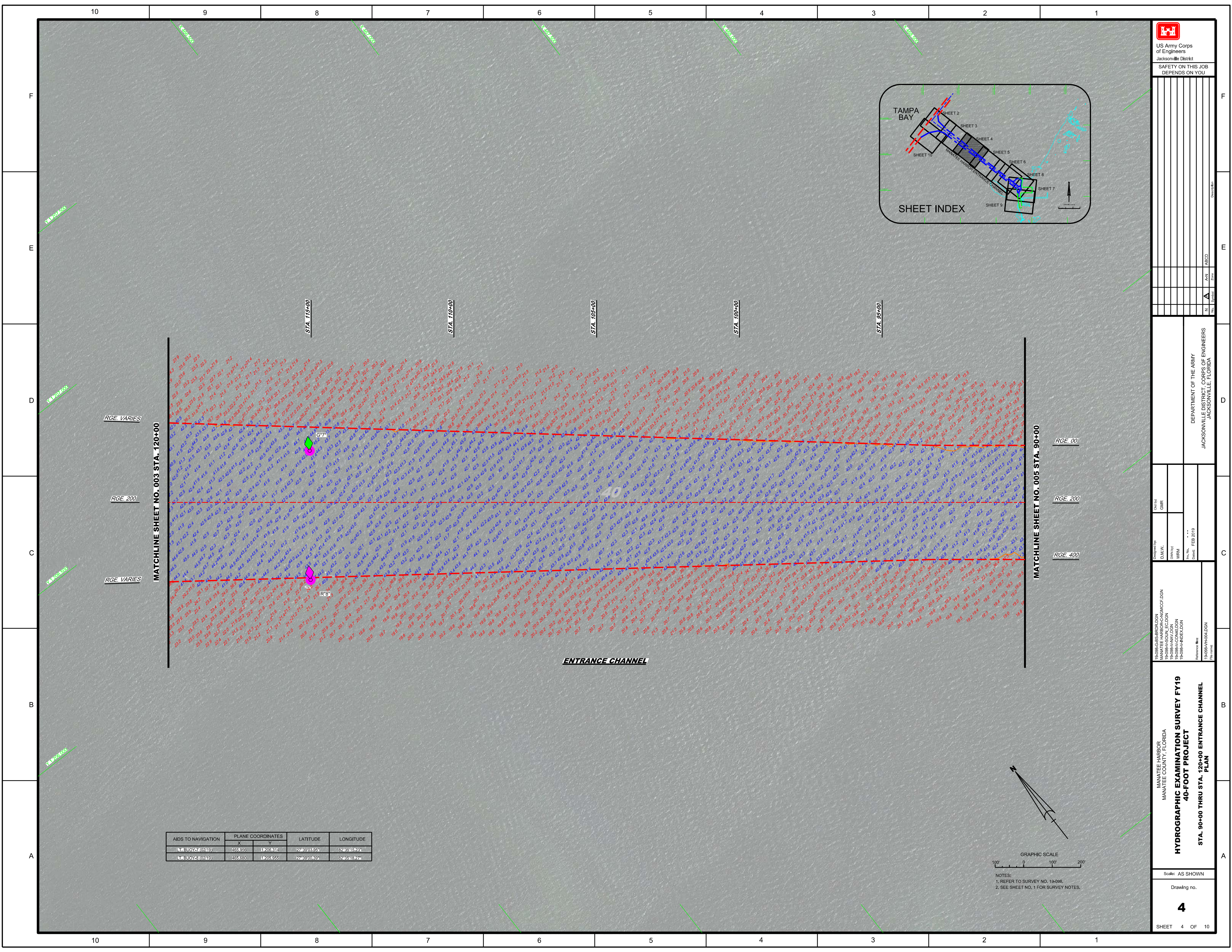
▲	MONUMENT
⚓	LIGHTED BEACON
■	GREEN DAYBEACON
▲	RED DAYBEACON
⚓	RED LIGHTED BUOY
⚓	GREEN LIGHTED BUOY
⚓	CAN BUOY
⚓	NUM BUOY
⚓	TIDE STAFF
⊖	PROJECT DEPTH

US Army Corps of Engineers
Jacksonville District
SAFETY ON THIS JOB DEPENDS ON YOU

DEPARTMENT OF THE ARMY
JACKSONVILLE DISTRICT, CORPS OF ENGINEERS
JACKSONVILLE, FLORIDA

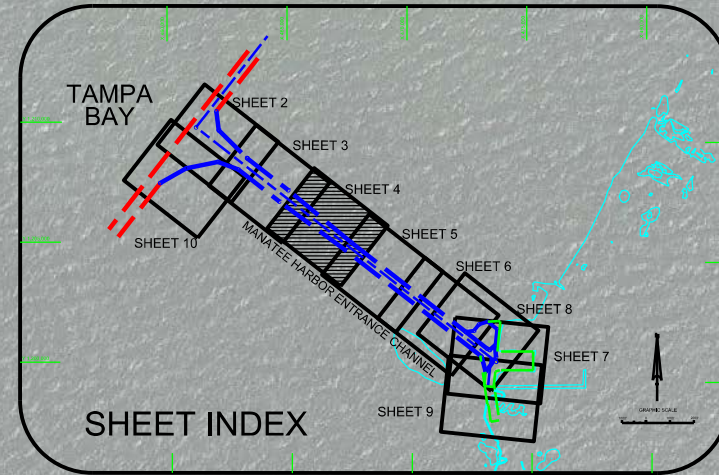
MANATEE HARBOR
MANATEE COUNTY, FLORIDA
HYDROGRAPHIC EXAMINATION SURVEY FY19
40-FOOT PROJECT
INDEX, LOCATION AND VICINITY
MAP

Scale: AS SHOWN
Drawing no. **1**
SHEET 01 OF 10



US Army Corps of Engineers
Jacksonville District

SAFETY ON THIS JOB
DEPENDS ON YOU



AIDS TO NAVIGATION	PLANE COORDINATES		LATITUDE	LONGITUDE
	X	Y		
1. BUOY 7 (0219)	465.956	11208.814	27°39'03.95"	82°35'15.23"
2. BUOY 3 (0219)	465.630	11205.955	27°39'00.91"	82°35'13.27"

DEPARTMENT OF THE ARMY
JACKSONVILLE DISTRICT, CORPS OF ENGINEERS
JACKSONVILLE, FLORIDA

Checked by: GHR
Designed by: DMW, GHR
Drawn by: WRM
Scale: AS SHOWN
Date: FEB 2019

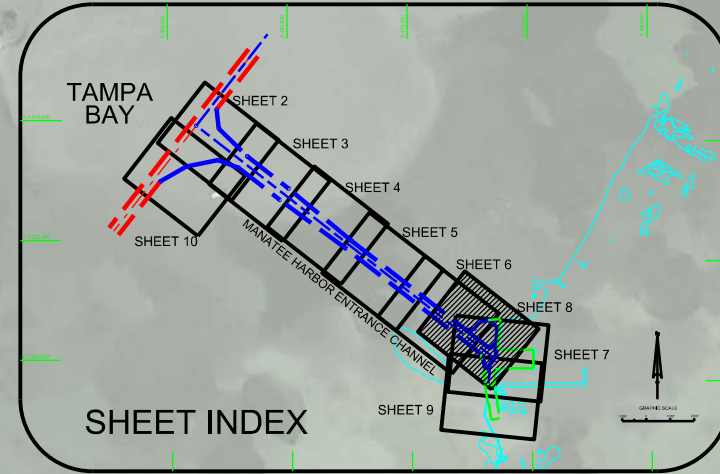
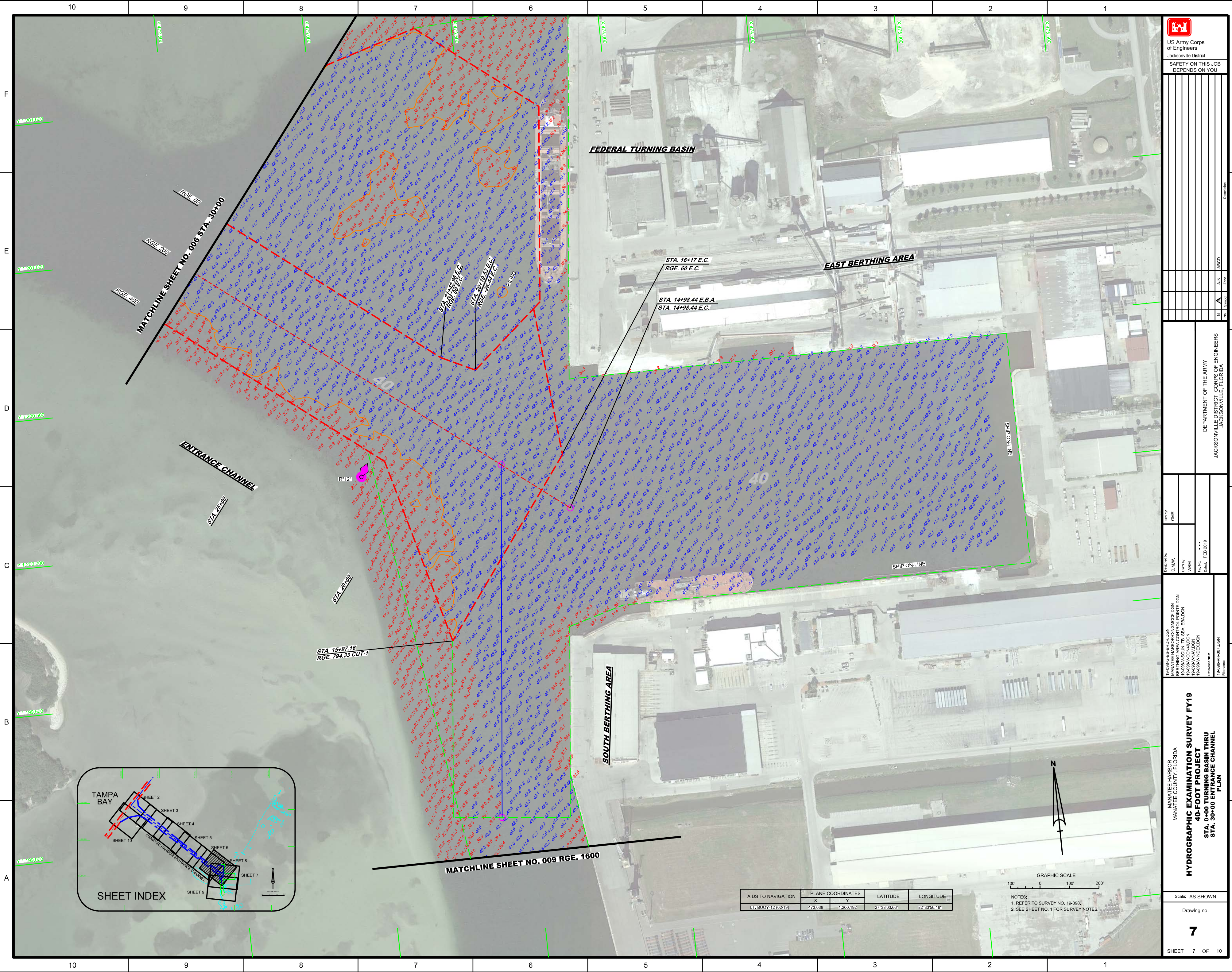
15-0986-C-BS-HR04L0DN
MANATEE HARBOR-CANAL-CON
15-0986-AV-0010DN
15-0986-HR04L0DN

MANATEE HARBOR
MANATEE COUNTY, FLORIDA
HYDROGRAPHIC EXAMINATION SURVEY FY19
40-FOOT PROJECT
STA. 90+00 THRU STA. 120+00 ENTRANCE CHANNEL PLAN

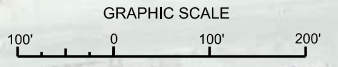
Scale: AS SHOWN
Drawing no.
4
SHEET 4 OF 10




NOTES:
1. REFER TO SURVEY NO. 13-0986.
2. SEE SHEET NO. 1 FOR SURVEY NOTES.



AIDS TO NAVIGATION	PLANE COORDINATES		LATITUDE	LONGITUDE
	X	Y		
LT. BUOY-12 (0219)	473,038	1,200,192	27°38'03.66"	82°33'56.16"



NOTES:
 1. REFER TO SURVEY NO. 19-098;
 2. SEE SHEET NO. 1 FOR SURVEY NOTES.



US Army Corps of Engineers
 Jacksonville District
 SAFETY ON THIS JOB
 DEPENDS ON YOU

Drawn by: GHR

Checked by: GHR

Designed by: D.M.W.

Drawn by: WRM

Checked by: FEB 2019

Scale: AS SHOWN

Drawing no. **7**

SHEET 7 OF 10

MANATEE HARBOR
 MANATEE COUNTY, FLORIDA
HYDROGRAPHIC EXAMINATION SURVEY FY19
40-FOOT PROJECT
STA. 0+00 TURNING BASIN THRU
STA. 30+00 ENTRANCE CHANNEL
PLAN

DEPARTMENT OF THE ARMY
 JACKSONVILLE DISTRICT, CORPS OF ENGINEERS
 JACKSONVILLE, FLORIDA

