

PUERTO NUEVO CHANNEL, PUERTO NUEVO TRANSITION CHANNEL, MARGARITA CHANNEL RIO PUERTO NUEVO, PUERTO RICO HYDROGRAPHIC EXAM SURVEY FY19

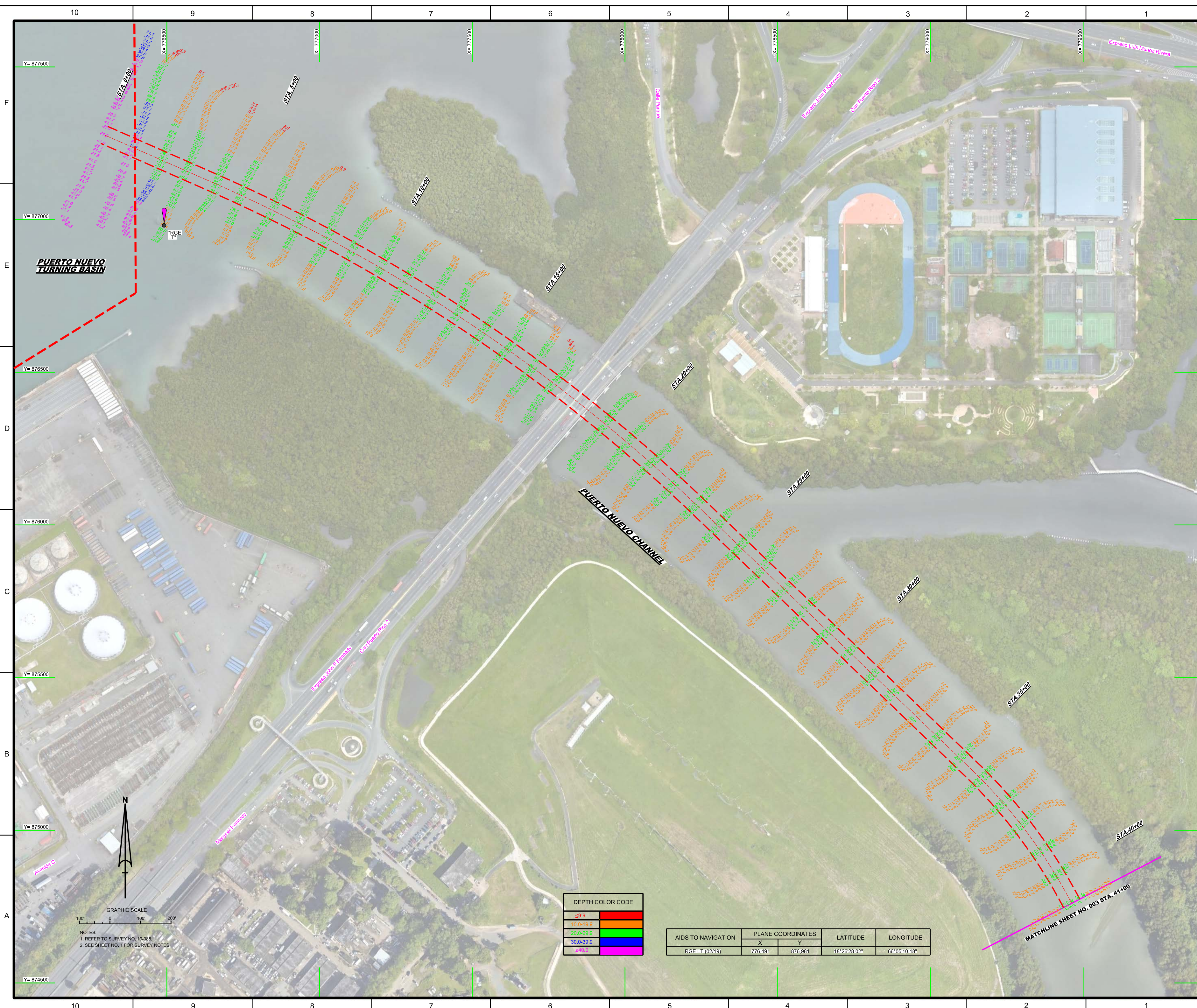
SURVEY NOTES

- REFER TO SURVEY NO. 19-088.
 - SOUNDINGS ARE IN FEET AND TENTHS AND ARE REFERENCED TO THE PUERTO RICAN VERTICAL DATUM OF 2002 (PRVD02).
 - ALL ELEVATIONS ARE BELOW THE CHART DATUM UNLESS PRECEDED BY A (+) SIGN.
 - PLANE COORDINATES ARE BASED ON THE LAMBERT CONFORMAL CONIC PROJECTION FOR PUERTO RICO & THE VIRGIN ISLANDS, ZONE 1, AND REFERENCED TO THE NORTH AMERICAN DATUM OF 1983 (NAD83).
 - ALL STATIONING REFERS TO THE CENTERLINE OF THE CHANNEL.
 - THIS SURVEY WAS PERFORMED USING REAL-TIME KINEMATIC (RTK) GPS POSITIONING WITH THE FOLLOWING REFERENCE BASE LOCATION:
REFERENCE BASE LOCATED AT "RORY SUTTON" (PID: BBFY23)
 - VERTICAL MEASUREMENTS WERE MADE USING A ROSS 835 SMARTSOUNDER DUAL-FREQUENCY 28/200 KHZ SINGLE-BEAM TRANSDUCER. ALL SOUNDINGS SHOWN ARE IN HIGH FREQUENCY.
TOPOGRAPHIC MEASUREMENTS WERE MADE USING A TRIMBLE R8 RTK GPS.
- | VESSEL | DATE OF SURVEY | CUT |
|--------|----------------|---|
| SB-34 | 12-13 FEB 2019 | PUERTO NUEVO CHANNEL, PUERTO NUEVO TRANSITION CHANNEL, MARGARITA CHANNEL, CONFLUENCE WALL |
| TOPO | 13 FEB 2019 | |
- AIDS TO NAVIGATION WERE LOCATED DURING THIS SURVEY.
 - THE INFORMATION DEPICTED ON THIS MAP REPRESENTS THE RESULTS OF SURVEYS MADE ON THE DATES INDICATED ABOVE AND CAN ONLY BE CONSIDERED AS INDICATING THE GENERAL CONDITIONS AT THAT TIME. THIS CHART IS SOLELY FOR THE DISTRIBUTION OF AVAILABLE DEPTHS AT THE TIME OF THE SURVEY.
 - SURVEY ACCURACY PERFORMANCE STANDARDS, QUALITY CONTROL, AND QUALITY ASSURANCE REQUIREMENTS WERE FOLLOWED DURING THIS SURVEY IN ACCORDANCE WITH USACE EM 1110-2-1003, HYDROGRAPHIC SURVEYING, 30 NOV 13.

LEGEND	
	MONUMENT
	LIGHTED BEACON
	GREEN DAYBEACON
	RED DAYBEACON
	RED LIGHTED BUOY
	GREEN LIGHTED BUOY
	CAN BUOY
	NUN BUOY
	TIDE STAFF
	PROJECT DEPTH

US Army Corps of Engineers
Jacksonville District
SAFETY ON THIS JOB
DEPENDS ON YOU

<p>DEPARTMENT OF THE ARMY JACKSONVILLE DISTRICT, CORPS OF ENGINEERS JACKSONVILLE, FLORIDA</p>	<p>Drawn by: GHR</p>	<p>Checked by: GHR</p>	<p>Designed by: WRM</p>	<p>DTM by: WRM</p>	<p>File No: W8225P-000-0000</p>	<p>Date: FEB 2019</p>	<p>Reference File: 19-088-PN-001.DGN</p>	<p>File Name: 19-088-PN-001.DGN</p>	<p>MAP</p>
<p>RIO PUERTO NUEVO, PUERTO RICO HYDROGRAPHIC EXAM SURVEY FY19 INDEX, LOCATION AND VICINITY</p>									
<p>Scale: AS SHOWN</p>									
<p>Drawing no. 1</p>									
<p>SHEET 01 OF 05</p>									



DEPTH COLOR CODE

≤9.9	Red
10.0-19.9	Orange
20.0-29.9	Yellow
30.0-39.9	Green
≥40.0	Blue

AIDS TO NAVIGATION	PLANE COORDINATES		LATITUDE	LONGITUDE
	X	Y		
RGE LT. (0219)	776,491	876,981	18°26'28.02"	66°05'10.18"

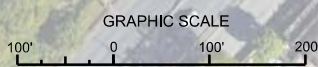
PUERTO NUEVO TURNING BASIN

PUERTO NUEVO CHANNEL

STA 40+00

MATCHLINE SHEET NO. 003 STA. 41+00

NOTES:
1. REFER TO SURVEY NO. 19-083.
2. SEE SHEET NO. 1 FOR SURVEY NOTES.



US Army Corps of Engineers
Jacksonville District

SAFETY ON THIS JOB
DEPENDS ON YOU

DEPARTMENT OF THE ARMY
JACKSONVILLE DISTRICT, CORPS OF ENGINEERS
JACKSONVILLE, FLORIDA

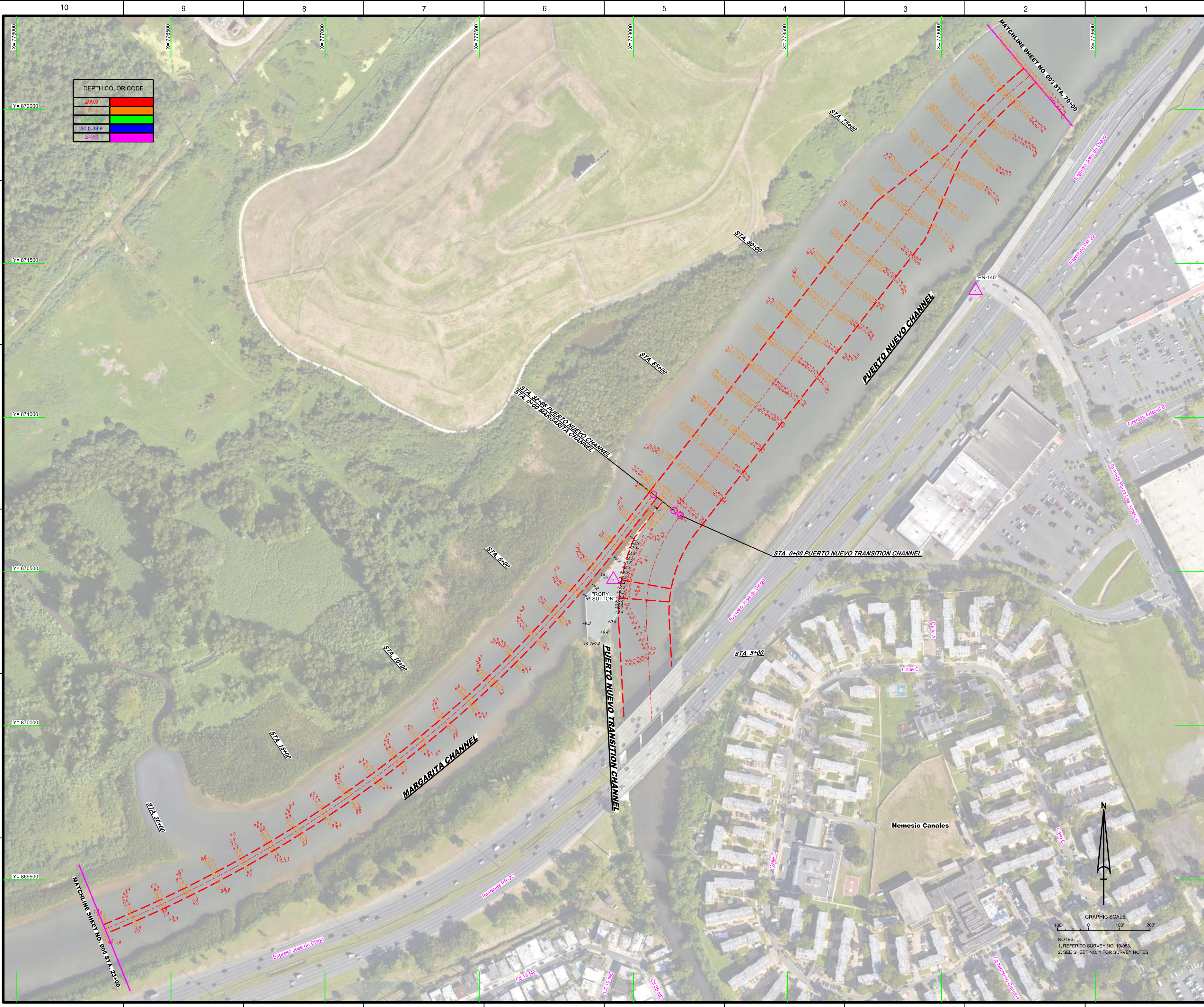
Drawn by: GHR
Checked by: GHR
Designed by: WRM
DTW File: WRM
File Name: 180226-A-1000-A000
Date: FEB 2019
Reference File: 18088C-BB-BIRDLDGN
File Name: 18088A-HARCUDGN

RIO PUERTO NUEVO, PUERTO RICO

HYDROGRAPHIC EXAM SURVEY FY19

STA 0+00 THRU STA 41+00 PUERTO NUEVO CHANNEL

PLAN



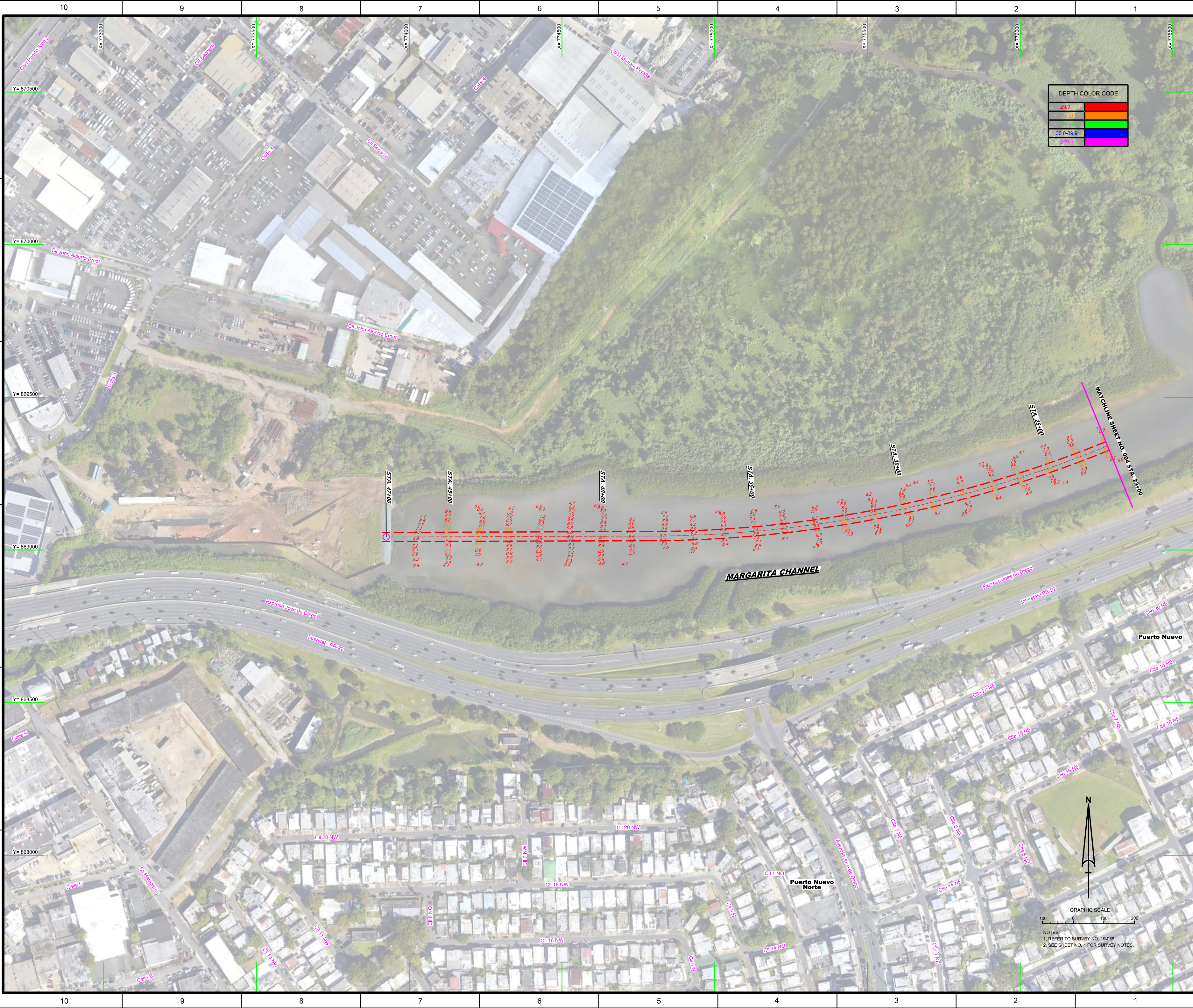
DEPTH COLOR CODE

299.9	Orange
10.0-19.9	Green
20.0-29.9	Yellow
30.0-39.9	Blue
40.0	Purple

<p>US Army Corps of Engineers Jacksonville District</p>	
<p>SAFETY ON THIS JOB DEPENDS ON YOU</p>	
<p>Checked By: GHR</p>	<p>Checked By: GHR</p>
<p>Designed By: WRM</p>	<p>Designed By: WRM</p>
<p>Drawn By: WRM</p>	<p>Drawn By: WRM</p>
<p>Date: 02/20/19</p>	<p>Date: 02/20/19</p>
<p>XXXXXXXXXXXXXXXXXXXX 15-0888A-SOUL_PAC/DON 15-0888A-SOUL_PAC/TRANSITION 15-0888A-SOUL_PAC/TRANSITION 15-0888A-SOUL_PAC/TRANSITION 15-0888A-SOUL_PAC/TRANSITION</p>	
<p>RIO PUERTO NUEVO, PUERTO RICO</p> <p>HYDROGRAPHIC EXAM SURVEY FY19</p> <p>STA 20+00 THRU STA 70+00 PUERTO NUEVO CHANNEL, STA 0+00 THRU STA 20+00 MARGARITA CH. AND STA 0+00 THRU STA 68+00 PUERTO NUEVO TRANSITION CH.</p> <p>PLAN</p>	
<p>Scale: AS SHOWN</p>	
<p>Drawing no. 4</p>	
<p>SHEET 04 OF 05</p>	




NOTES:
1. REFER TO SURVEY NO. 15-0888.
2. SEE SHEET NO. 1 FOR SURVEY NOTES.



DEPTH COLOR CODE

0-9.9	Red
10.0-19.9	Orange
20.0-29.9	Yellow
30.0-39.9	Green
40.0	Blue



US Army Corps of Engineers
Jacksonville District

SAFETY ON THIS JOB
DEPENDS ON YOU

<p>DESIGNED BY: WRM DRAWN BY: WRM CHECKED BY: WRM DATE: FEB 2019</p>	<p>Client: GHR Project: MARGARITA CHANNEL Drawing No: 5</p>
--	---

RIO PUERTO NUEVO, PUERTO RICO

HYDROGRAPHIC EXAM SURVEY FY19

STA. 0+00 THRU STA. 47+00 MARGARITA CHANNEL

PLAN

Scale: AS SHOWN

Drawing no. **5**

SHEET 05 OF 05

NOTES:
1. REFER TO SURVEY NO. 19-088.
2. SEE SHEET NO. 1 FOR SURVEY NOTES.