

# MAYAGUEZ HARBOR MAYAGUEZ, PUERTO RICO PROJECT CONDITION SURVEY FY19 30-FOOT PROJECT

### SURVEY NOTES

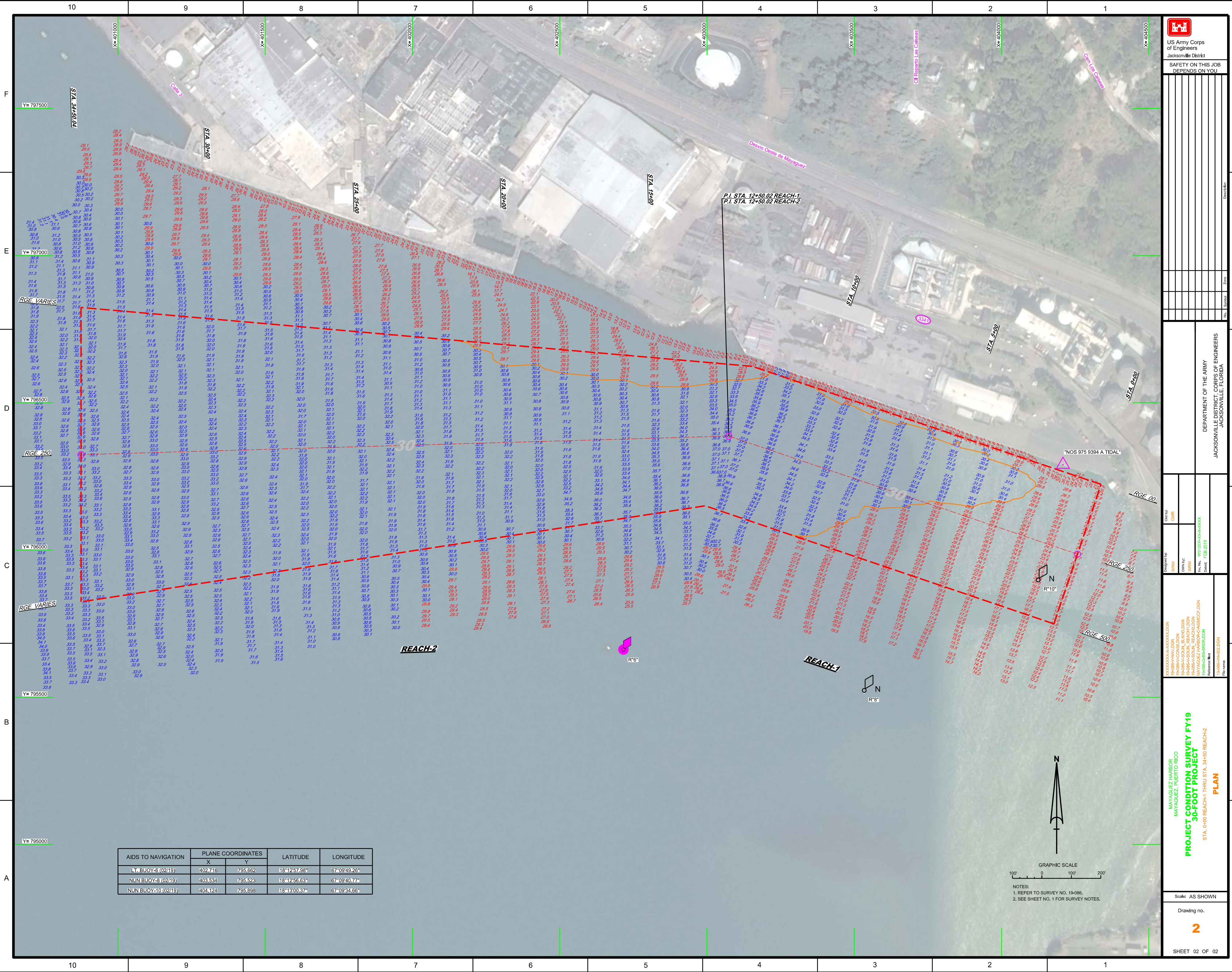
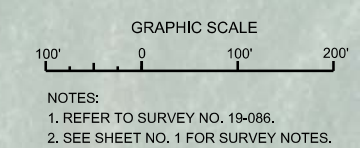
- REFER TO SURVEY NO. 19-086.
  - SOUNDINGS ARE IN FEET AND TENTHS AND REFER TO MEAN LOWER LOW WATER (MLLW) TIDAL DATUM WHICH IS 0.51 FEET BELOW PRVD02.
  - TIDAL REDUCTIONS WERE MADE UTILIZING A REAL-TIME KINEMATIC (RTK) GPS AND CALIBRATED TO THE PUBLISHED MLLW OF THE BENCHMARK ASSOCIATED WITH THE TIDE GAUGE SITE SPECIFIED BELOW:  
  
NOAA TIDAL STATION 975-9394 WAS USED FOR ENTIRE PROJECT.
  - ALL ELEVATIONS ARE BELOW THE CHART DATUM UNLESS PRECEDED BY A (+) SIGN.
  - PLANE COORDINATES ARE BASED ON THE LAMBERT CONFORMAL CONIC PROJECTION FOR PR & VI, NORTH ZONE AND REFERENCED TO THE NORTH AMERICAN DATUM OF 1983 (NAD83).
  - ALL STATIONING REFERS TO THE CENTERLINE OF THE CHANNEL.
  - THIS SURVEY WAS PERFORMED USING REAL-TIME KINEMATIC (RTK) GPS POSITIONING WITH THE FOLLOWING REFERENCE BASE LOCATION:  
  
REFERENCE BASE LOCATED AT "975 9394 A TIDAL" (OPUS PID: DK7451)
  - VERTICAL MEASUREMENTS WERE MADE USING A ROSS MODEL 835C SMART SOUNDER WITH A DUAL-FREQUENCY TRANSDUCER OPERATING AT 28/200 KHZ. ALL SOUNDINGS SHOWN ARE IN HIGH FREQUENCY.
- | VESSEL | DATE OF SURVEY | CUT           |
|--------|----------------|---------------|
| SB-34  | 01 FEB 2019    | REACH 1 AND 2 |
- AIDS TO NAVIGATION WERE LOCATED DURING THIS SURVEY.
  - THE INFORMATION DEPICTED ON THIS MAP REPRESENTS THE RESULTS OF SURVEYS MADE ON THE DATES INDICATED ABOVE AND CAN ONLY BE CONSIDERED AS INDICATING THE GENERAL CONDITIONS AT THAT TIME. THIS CHART IS SOLELY FOR THE DISTRIBUTION OF AVAILABLE DEPTHS AT THE TIME OF THE SURVEY.
  - SURVEY ACCURACY PERFORMANCE STANDARDS, QUALITY CONTROL, AND QUALITY ASSURANCE REQUIREMENTS WERE FOLLOWED DURING THIS SURVEY IN ACCORDANCE WITH USACE EM 1110-2-1003, HYDROGRAPHIC SURVEYING, 30 NOV 2013.

LEGEND	
	MONUMENT
	LIGHTED BUOY
	GREEN DAYBEACON
	RED DAYBEACON
	RED LIGHTED BUOY
	GREEN LIGHTED BUOY
	CAN BUOY
	NUN BUOY
	TIDE STAFF
	PROJECT DEPTH

US Army Corps of Engineers  
Jacksonville District  
SAFETY ON THIS JOB DEPENDS ON YOU

Drawn by:	Checked by:	Designed by:	Drawn by:	Checked by:	Designed by:	Drawn by:	Checked by:	Designed by:	Drawn by:
<p>DEPARTMENT OF THE ARMY JACKSONVILLE DISTRICT, CORPS OF ENGINEERS JACKSONVILLE, FLORIDA</p>									
<p><b>PROJECT CONDITION SURVEY FY19</b> <b>30-FOOT PROJECT</b> INDEX, LOCATION AND VICINITY MAP</p>									
<p>Scale: AS SHOWN</p> <p>Drawing no. <b>1</b></p>									
<p>SHEET 01 OF 02</p>									

AIDS TO NAVIGATION	PLANE COORDINATES		LATITUDE	LONGITUDE
	X	Y		
LT. BUOY-6 (0219)	402,716	795,662	18°12'57.98"	67°09'49.26"
NUN BUOY-3 (0219)	403,534	795,523	18°12'56.63"	67°09'49.77"
NUN BUOY-10 (0219)	404,124	795,898	18°13'00.37"	67°09'34.66"



AIDS TO NAVIGATION	PLANE COORDINATES		LATITUDE	LONGITUDE
	X	Y		
LT. BUOY-6 (0219)	402,716	795,662	18°12'57.98"	67°09'49.26"
NUN BUOY-3 (0219)	403,534	795,523	18°12'56.63"	67°09'49.77"
NUN BUOY-10 (0219)	404,124	795,898	18°13'00.37"	67°09'34.66"