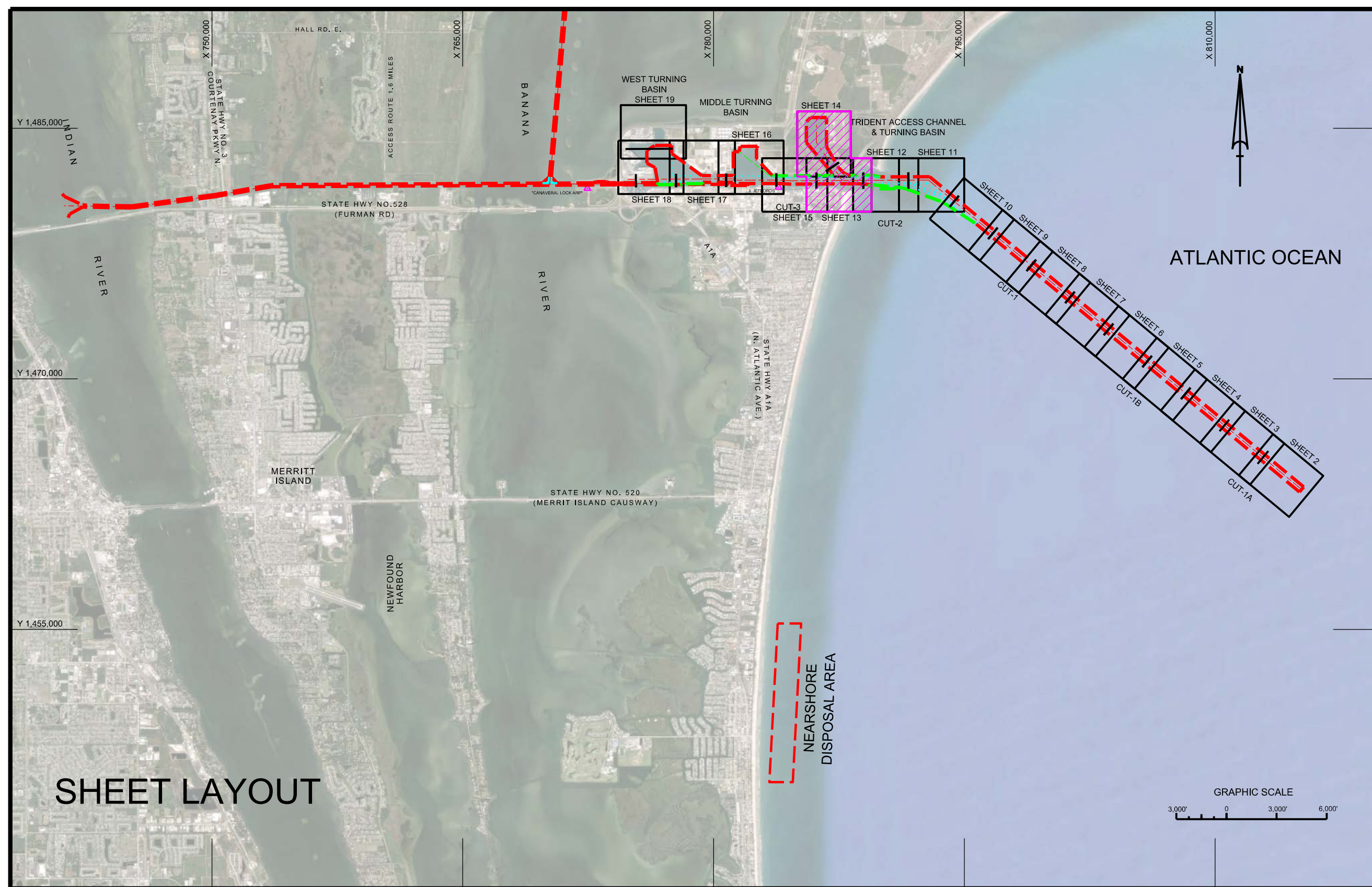
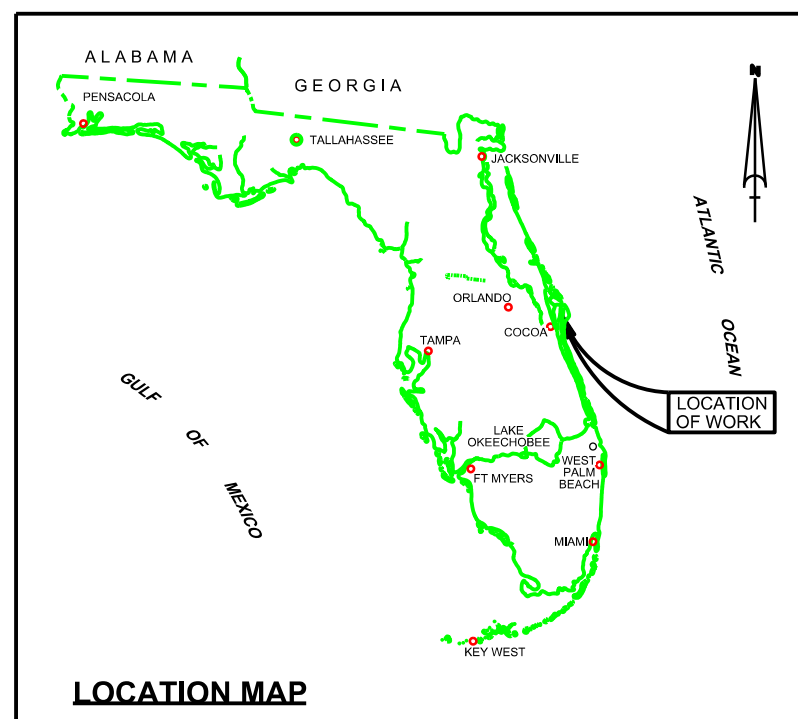


# CANAVERAL HARBOR BREVARD COUNTY, FLORIDA 1Q NAVY HYDRO EXAM SURVEY FY19



### SURVEY NOTES

- REFER TO SURVEY NO. 19-069.
- TIDAL REDUCTIONS WERE OBTAINED UTILIZING A REAL-TIME KINEMATIC (RTK) GPS AND REFERENCED TO MLLW UTILIZING A HYPACK KINEMATIC TIDE DATUM (KTD) MODEL. KTD FILE NAME IS: "CANAVERALHBR-2015 02 20.KTD".
- ALL ELEVATIONS ARE BELOW THE CHART DATUM UNLESS PRECEDED BY A (+) SIGN.
- PLANE COORDINATES ARE BASED ON THE TRANSVERSE MERCATOR PROJECTION FOR THE EAST ZONE OF FLORIDA AND REFERENCED TO NORTH AMERICAN DATUM OF 1983 (NAD83).
- ALL STATIONING REFERS TO THE CENTERLINE OF THE CHANNEL.
- THIS SURVEY WAS PERFORMED USING REAL-TIME KINEMATIC (RTK) GPS POSITIONING WITH THE FOLLOWING REFERENCE BASE LOCATION:  
 \*REFERENCE BASE LOCATED AT "CANAVERAL LOCK ARP" (OPUS PID: BBCV67)  
 \*TIDE STAFF LOCATED FROM "JEFFORDS" (COE PID: BBCQ55)
- DEPTHS DEPICTED BY THIS SURVEY ARE REFERENCED TO MLLW. TIDAL EPOCH 1983-2001 AS REPORTED BY THE NATIONAL OCEANIC AND ATMOSPHERIC ADMINISTRATION (NOAA). NOAA'S DATUM MODEL WAS USED AND CALIBRATED TO THE PUBLISHED MLLW HEIGHTS OF THE BENCHMARKS ASSOCIATED WITH THE TIDE GAUGE SITES SPECIFIED BELOW:  
 NOAA TIDAL STATION 872-1604, TRIDENT PIER, CANAVERAL, FL
- VERTICAL MEASUREMENTS WERE MADE USING A ROSS SMART SOUNDER SINGLE-BEAM TRANSDUCER OPERATING AT 28/200 KHZ. LOW FREQUENCY SOUNDINGS ARE SHOWN FOR THE TRIDENT ACCESS CHANNEL AND THE TRIDENT TURNING BASIN.  
 VESSEL: SB-46      DATE OF SURVEY: 13 FEB 2019      CUT: TAC, TT8
- AIDS TO NAVIGATION WERE LOCATED DURING THIS SURVEY.
- THE INFORMATION DEPICTED ON THIS MAP REPRESENTS THE RESULTS OF SURVEYS MADE ON THE DATES INDICATED ABOVE AND CAN ONLY BE CONSIDERED AS INDICATING THE GENERAL CONDITIONS AT THAT TIME. THIS CHART IS SOLELY FOR THE DISTRIBUTION OF AVAILABLE DEPTHS AT THE TIME OF THE SURVEY.
- SURVEY ACCURACY PERFORMANCE STANDARDS, QUALITY CONTROL, AND QUALITY ASSURANCE REQUIREMENTS WERE FOLLOWED DURING THIS SURVEY IN ACCORDANCE WITH USACE EM 1110-2-1003, HYDROGRAPHIC SURVEYING, 30 NOV 2013.

LEGEND	
	MONUMENT
	LIGHTED BEACON
	GREEN DAYBEACON
	RED DAYBEACON
	RED LIGHTED BUOY
	GREEN LIGHTED BUOY
	CAN BUOY
	NUN BUOY
	TIDE STAFF
	PROJECT DEPTH

<p>DESIGNED BY: WRM                  DRAWN BY: WRM                  CHECKED BY: GHR</p> <p>DATE: MAR 2019</p> <p>PROJECT: 19-069A-HR01.DGN</p>	<p>DEPARTMENT OF THE ARMY                  JACKSONVILLE DISTRICT CORPS OF ENGINEERS                  JACKSONVILLE, FLORIDA</p> <p>1Q NAVY HYDRO EXAM SURVEY FY19                  41-FOOT PROJECT                  INDEX, LOCATION AND VICINITY PLAN</p> <p>Scale: AS SHOWN</p> <p>Drawing no.  <b>1 / 3</b></p> <p>SHEET 1 OF 19</p>
--	---



