

ST. LUCIE INLET / CROSSROADS MARTIN COUNTY, FLORIDA HYDROGRAPHIC EXAM SURVEY FY19 7, 8 & 10-FOOT PROJECT

SURVEY NOTES

- REFER TO SURVEY NO. 19-042.
- SOUNDINGS ARE IN FEET AND TENTHS AND REFER TO NOAA'S REPORTED MEAN LOWER LOW WATER (MLLW) OF THE 1983-2001 TIDAL EPOCH.
- TIDAL REDUCTIONS WERE OBTAINED UTILIZING A REAL-TIME KINEMATIC (RTK) GPS AND REFERENCED TO MLLW UTILIZING A KINEMATIC TIDE DATUM (KTD) MODEL. KTD FILE NAME IS: "INDIANRIVER-STLUCIE-MARTIN-20140527.KTD".
- ALL ELEVATIONS ARE BELOW THE CHART DATUM UNLESS PRECEDED BY A (+) SIGN.
- PLANE COORDINATES ARE BASED ON THE TRANSVERSE MERCATOR PROJECTION FOR THE EAST ZONE OF FLORIDA AND REFERENCED TO NORTH AMERICAN DATUM OF 1983 (NAD83).
- ALL STATIONING REFERS TO THE CENTERLINE OF THE CHANNEL.
- THIS SURVEY WAS PERFORMED USING REAL-TIME KINEMATIC (RTK) GPS POSITIONING WITH THE FOLLOWING REFERENCE BASE LOCATION:
REFERENCE BASE LOCATED AT "T 693" (PID: 6BFH83)
- DEPTHS DEPICTED BY THIS SURVEY ARE REFERENCED TO MLLW, TIDAL EPOCH 1983-2001, AS REPORTED BY THE NATIONAL OCEANIC AND ATMOSPHERIC ADMINISTRATION (NOAA). A MODIFIED VERSION OF NOAA'S DATUM MODEL WAS USED TO CALIBRATE TO THE PUBLISHED MLLW HEIGHTS OF THE BENCH MARK BELOW:
NOAA TIDAL STATION 872-2381 FOR ALL CUTS (PID: AF6967)
VERTICAL MEASUREMENTS WERE MADE USING AN EDGETECH 6205 COMBINED MULTI-BEAM AND SIDESCAN SONAR. ALL SOUNDINGS SHOWN ARE IN HIGH FREQUENCY.
- AIDS TO NAVIGATION WERE LOCATED DURING THIS SURVEY.
- THE INFORMATION DEPICTED ON THIS MAP REPRESENTS THE RESULTS OF SURVEYS MADE ON THE DATES INDICATED ABOVE AND CAN ONLY BE CONSIDERED AS INDICATING THE GENERAL CONDITIONS AT THAT TIME. THIS CHART IS SOLELY FOR THE DISTRIBUTION OF AVAILABLE DEPTHS AT THE TIME OF THE SURVEY.
- SURVEY ACCURACY PERFORMANCE STANDARDS, QUALITY CONTROL, AND QUALITY ASSURANCE REQUIREMENTS WERE FOLLOWED DURING THIS SURVEY IN ACCORDANCE WITH USACE EM 1110-2-1003, HYDROGRAPHIC SURVEYING, 30 NOV 2013.

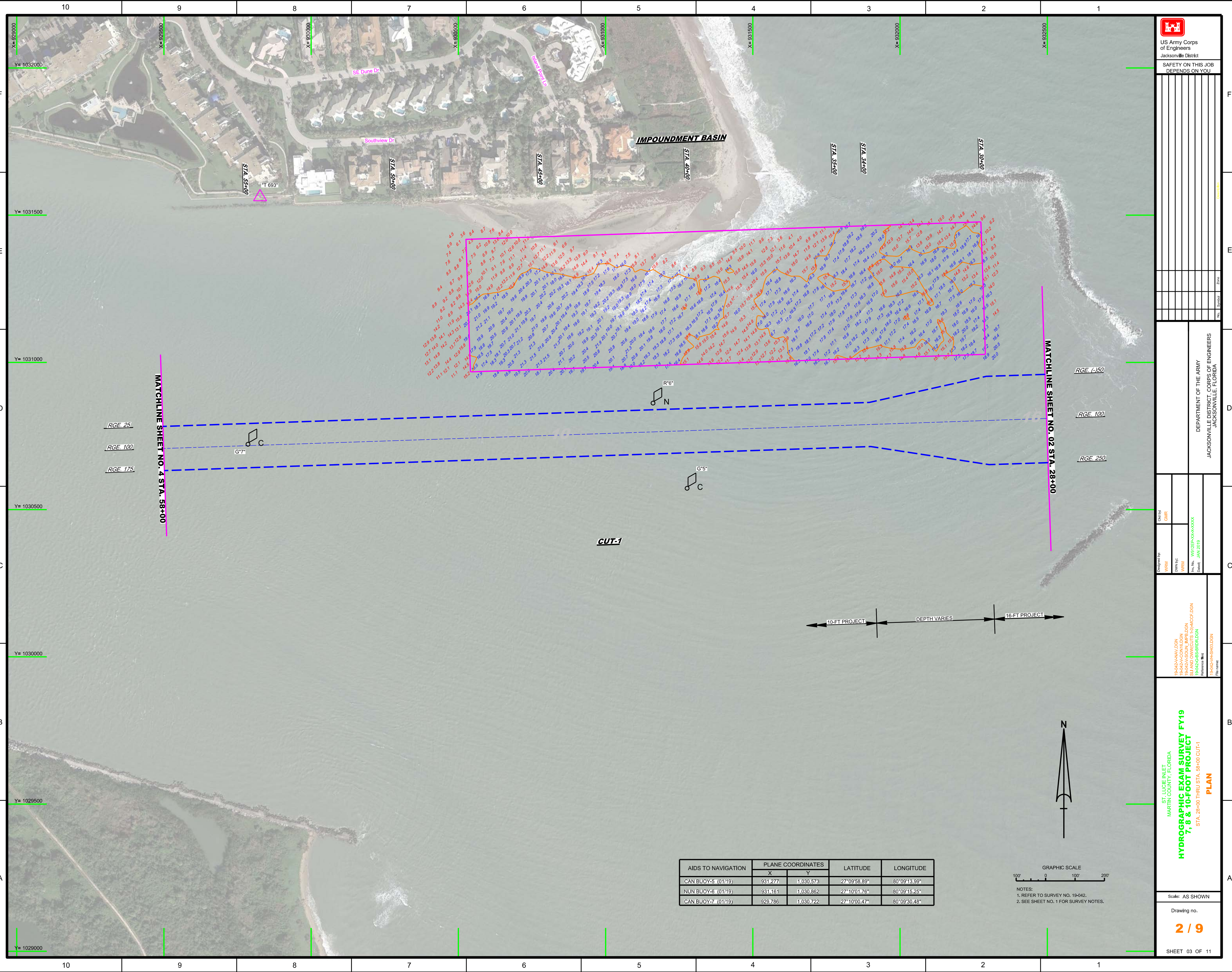
LEGEND	
	MONUMENT
	LIGHTED BEACON
	GREEN DAYBEACON
	RED DAYBEACON
	RED LIGHTED BUOY
	GREEN LIGHTED BUOY
	CAN BUOY
	NUN BUOY
	TIDE STAFF
	PROJECT DEPTH

US Army Corps of Engineers
Jacksonville District
SAFETY ON THIS JOB
DEPENDS ON YOU

DEPARTMENT OF THE ARMY
JACKSONVILLE DISTRICT, CORPS OF ENGINEERS
JACKSONVILLE, FLORIDA

ST. LUCIE INLET
MARTIN COUNTY, FLORIDA
HYDROGRAPHIC EXAM SURVEY FY19
7, 8 & 10-FOOT PROJECT
INDEX, LOCATION AND VICINITY
MAP

Scale: AS SHOWN
Drawing no.
1 / 9
SHEET 01 OF 11



10 9 8 7 6 5 4 3 2 1

F
E
D
C
B
A

X= 929000
Y= 1032000
X= 929500
Y= 1031500
X= 930000
Y= 1031000
X= 930500
Y= 1030500
X= 931000
Y= 1030000
X= 931500
Y= 1029500
X= 932000
Y= 1029000

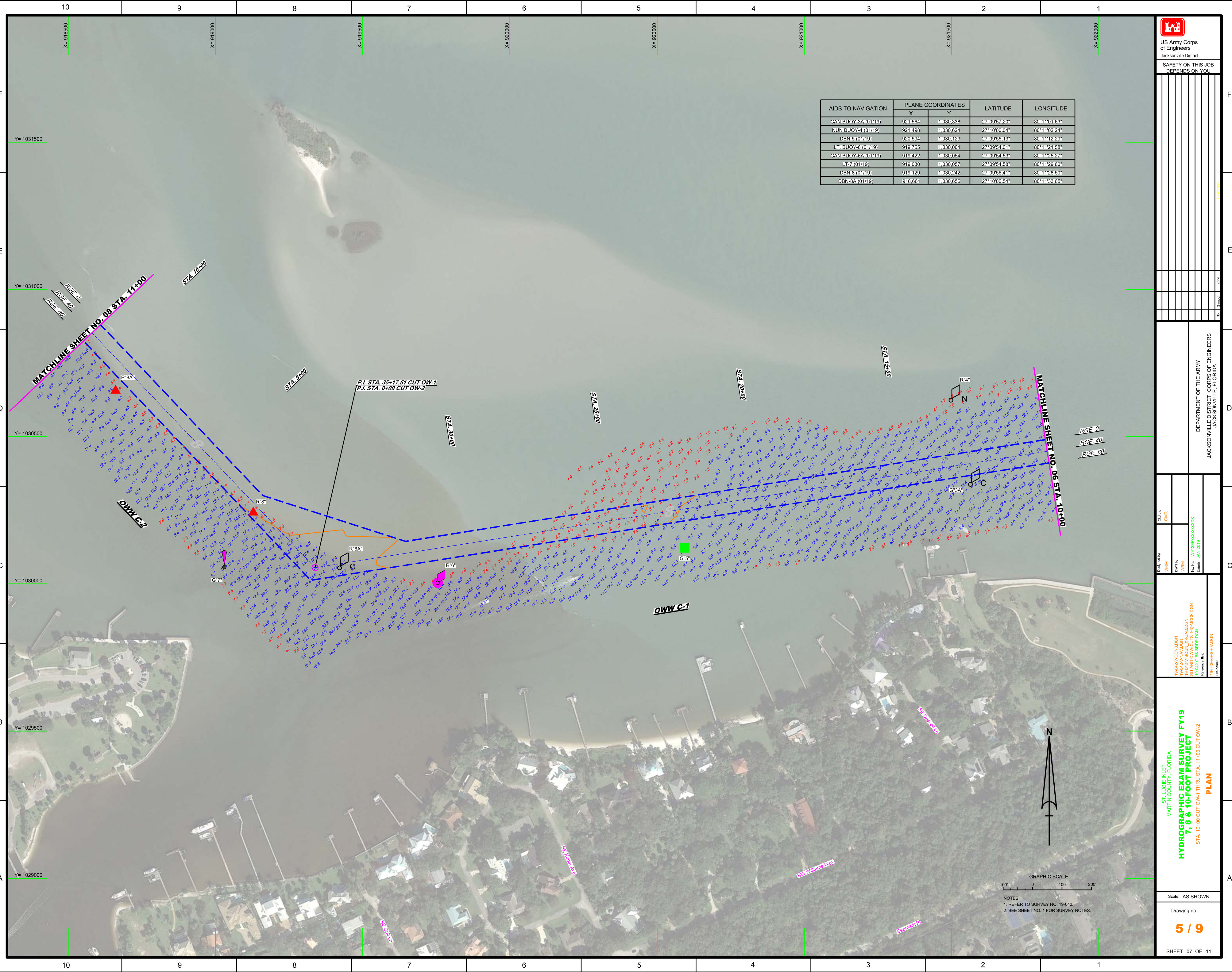
<p>US Army Corps of Engineers Jacksonville District</p>	
<p>SAFETY ON THIS JOB DEPENDS ON YOU</p>	
<p>DEPARTMENT OF THE ARMY JACKSONVILLE DISTRICT, CORPS OF ENGINEERS JACKSONVILLE, FLORIDA</p>	
<p>Drawn by: WRM</p>	<p>Checked by: GHR</p>
<p>Designed by: WRM</p>	<p>Project No: WRM</p>
<p>File No: 19-042-00-00-00-000</p>	<p>Date: JAN 2019</p>
<p>19-042-00-00-00-000 19-042-00-00-00-000 19-042-00-00-00-000 19-042-00-00-00-000 19-042-00-00-00-000</p>	
<p>ST. LUCIE INLET MARTIN COUNTY, FLORIDA</p> <p>HYDROGRAPHIC EXAM SURVEY FY19 7, 8 & 10-FOOT PROJECT STA. 28+00 THRU STA. 58+00 CUT-1</p> <p>PLAN</p>	
<p>Scale: AS SHOWN</p>	
<p>Drawing no.</p> <p>2 / 9</p>	
<p>SHEET 03 OF 11</p>	

AIDS TO NAVIGATION	PLANE COORDINATES		LATITUDE	LONGITUDE
	X	Y		
CAN BUOY-5 (01/19)	931,277	1,030,573	27°09'58.89"	80°09'13.99"
NUN BUOY-6 (01/19)	931,161	1,030,862	27°10'01.76"	80°09'15.25"
CAN BUOY-7 (01/19)	929,786	1,030,722	27°10'00.47"	80°09'30.48"

GRAPHIC SCALE
100' 0 100' 200'

NOTES:
1. REFER TO SURVEY NO. 19-042.
2. SEE SHEET NO. 1 FOR SURVEY NOTES.

AIDS TO NAVIGATION	PLANE COORDINATES		LATITUDE	LONGITUDE
	X	Y		
CAN BUOY-3A (01/19)	921,564	1,030,338	27°09'57.20"	80°11'01.63"
NUN BUOY-1 (01/19)	921,498	1,030,624	27°10'00.04"	80°11'02.24"
DBN-5 (01/19)	920,594	1,030,123	27°09'55.33"	80°11'12.29"
LT. BUOY-6 (01/19)	919,755	1,030,004	27°09'54.01"	80°11'21.58"
CAN BUOY-6A (01/19)	919,422	1,030,054	27°09'54.53"	80°11'25.27"
LT-7 (01/19)	919,030	1,030,057	27°09'54.58"	80°11'29.60"
DBN-8 (01/19)	919,129	1,030,242	27°09'56.41"	80°11'28.50"
DBN-8A (01/19)	918,661	1,030,656	27°10'00.54"	80°11'33.65"



DEPARTMENT OF THE ARMY
JACKSONVILLE DISTRICT, CORPS OF ENGINEERS
JACKSONVILLE, FLORIDA

Checked by: GHR
Designed by: WRM
Drawn by: WRM
In Charge: WRM
Date: JAN 2019

PROJECT NO. 19-042
PROJECT NAME: ST. LUCIE INLET
PROJECT LOCATION: MARTIN COUNTY, FLORIDA
PROJECT DESCRIPTION: HYDROGRAPHIC EXAM SURVEY FY19
PROJECT PHASE: 7, 8 & 10-FOOT PROJECT
PROJECT STATIONING: STA. 10+00 CUT OW-1 THRU STA. 11+00 CUT OW-2
PROJECT PLAN: PLAN


Scale: AS SHOWN
Drawing no. 5 / 9
SHEET 07 OF 11



NOTES:
1. REFER TO SURVEY NO. 19-042.
2. SEE SHEET NO. 1 FOR SURVEY NOTES.



AIDS TO NAVIGATION	PLANE COORDINATES		LATITUDE	LONGITUDE
	X	Y		
DBN-10 (01/19)	918,405	1,031,084	27°10'04.79"	80°11'36.45"
LS-11 (01/19)	918,232	1,030,944	27°10'03.41"	80°11'38.38"



US Army Corps
of Engineers
Jacksonville District

SAFETY ON THIS JOB
DEPENDS ON YOU

DEPARTMENT OF THE ARMY
JACKSONVILLE DISTRICT, CORPS OF ENGINEERS
JACKSONVILLE, FLORIDA

Checked by: GMR
Designed by: WRM
Drawn by: WRM
File No: W9125P-000-00000
Date: JAN 2019

PROJECT: ST. LUCIE INLET, MARTIN COUNTY, FLORIDA
HYDROGRAPHIC EXAM SURVEY FY19
7, 8 & 10-FOOT PROJECT
STA. 11+00 CUT OW-W-2 THRU STA. 9+46.01 CUT OW-W-3
PLAN

Scale: AS SHOWN
Drawing no.
6 / 9
SHEET 08 OF 11

GRAPHIC SCALE
0 100' 200'

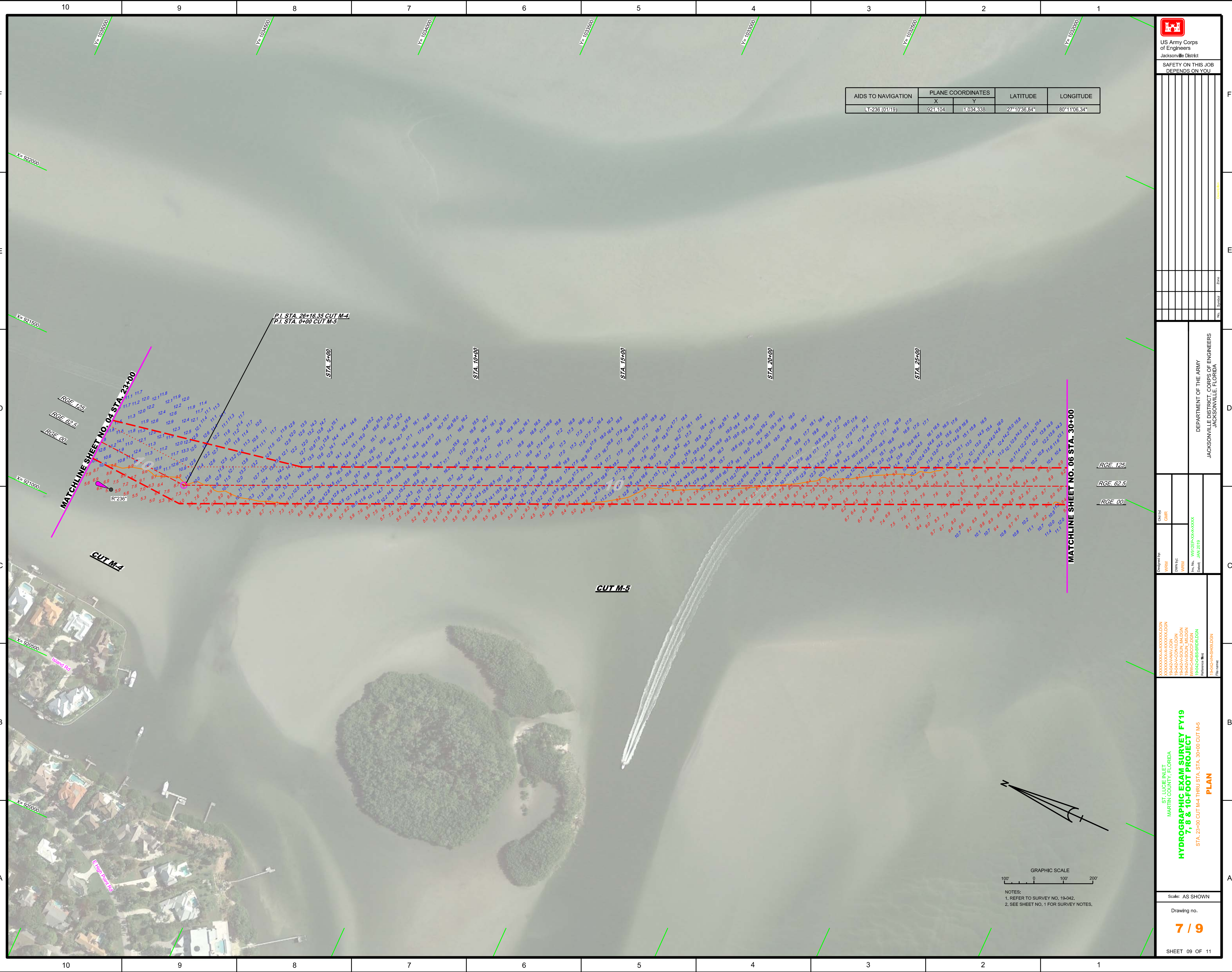
NOTES:
1. REFER TO SURVEY NO. 19-042.
2. SEE SHEET NO. 1 FOR SURVEY NOTES.



US Army Corps
of Engineers
Jacksonville District

SAFETY ON THIS JOB
DEPENDS ON YOU

AIDS TO NAVIGATION	PLANE COORDINATES		LATITUDE	LONGITUDE
	X	Y		
LT-236 (01119)	924,104	1,034,338	27°10'36.84"	80°11'06.34"



P.I. STA. 26+16.35 CUT M-4
P.I. STA. 0+00 CUT M-5

MATCHLINE SHEET NO. 04 STA. 23+00

MATCHLINE SHEET NO. 06 STA. 30+00

DEPARTMENT OF THE ARMY
JACKSONVILLE DISTRICT, CORPS OF ENGINEERS
JACKSONVILLE, FLORIDA

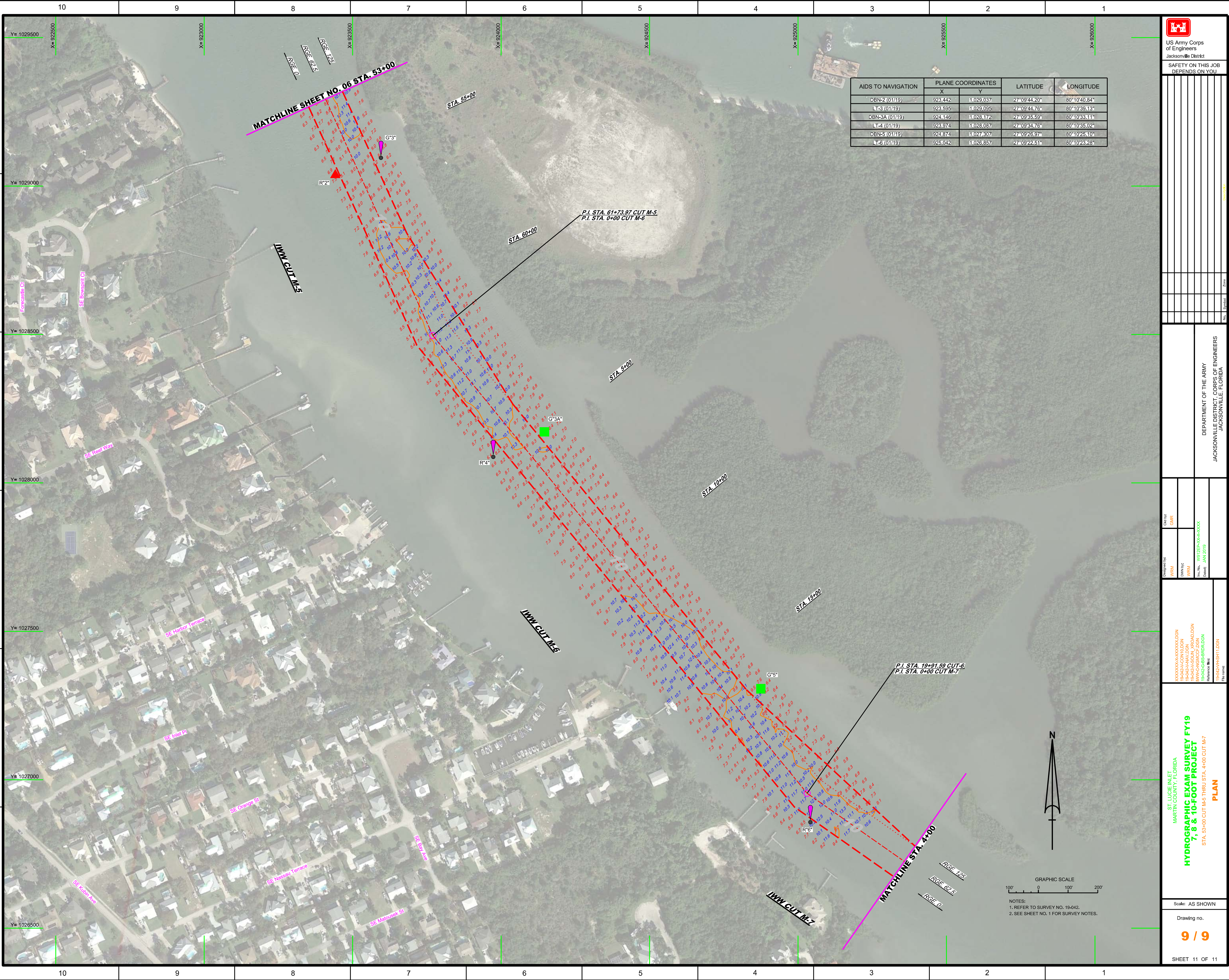
Checked by: GHR
Designed by: WRM
Drawn by: WRM
File No: W02255-00-000-000
Date: JAN 2019

XXXXXXXXXXXXXXXXXXXX
XXXXXXXXXXXXXXXXXXXX
XXXXXXXXXXXXXXXXXXXX
XXXXXXXXXXXXXXXXXXXX
XXXXXXXXXXXXXXXXXXXX
XXXXXXXXXXXXXXXXXXXX
XXXXXXXXXXXXXXXXXXXX
XXXXXXXXXXXXXXXXXXXX
XXXXXXXXXXXXXXXXXXXX
XXXXXXXXXXXXXXXXXXXX


ST. LUCIE INLET
MARTIN COUNTY, FLORIDA
HYDROGRAPHIC EXAM SURVEY FY19
7, 8 & 10-FOOT PROJECT
STA. 23+00 CUT M-4 THRU STA. 30+00 CUT M-5
PLAN

Scale: AS SHOWN
Drawing no.
7 / 9
SHEET 09 OF 11

GRAPHIC SCALE
100' 0 100' 200'
NOTES:
1. REFER TO SURVEY NO. 19-042.
2. SEE SHEET NO. 1 FOR SURVEY NOTES.



AIDS TO NAVIGATION	PLANE COORDINATES		LATITUDE	LONGITUDE
	X	Y		
DBN-2 (01/19)	923.442	11029.037	27°09'44.20"	80°10'40.84"
LT-3 (01/19)	923.595	11029.095	27°09'44.76"	80°10'39.13"
DBN-3A (01/19)	924.146	11028.172	27°09'35.59"	80°10'33.11"
LT-4 (01/19)	923.974	11028.087	27°09'34.76"	80°10'35.02"
DBN-5 (01/19)	924.874	11027.507	27°09'26.97"	80°10'25.10"
LT-5 (01/19)	925.042	11026.857	27°09'22.51"	80°10'23.28"



US Army Corps of Engineers
Jacksonville District

SAFETY ON THIS JOB DEPENDS ON YOU

DEPARTMENT OF THE ARMY
JACKSONVILLE DISTRICT, CORPS OF ENGINEERS
JACKSONVILLE, FLORIDA

ST. LUCIE INLET
MARTIN COUNTY, FLORIDA

HYDROGRAPHIC EXAM SURVEY FY19
7, 8 & 10-FOOT PROJECT

STA. 3+00 CUT M-5 THRU STA. 4+00 CUT M-7
PLAN

Scale: AS SHOWN

Drawing no.
9 / 9

SHEET 11 OF 11

