



OWW / ST. LUCIE RIVER REACH 3 MARTIN COUNTY, FLORIDA HYDROGRAPIC EXAM SURVEY FY19 8-FOOT PROJECT

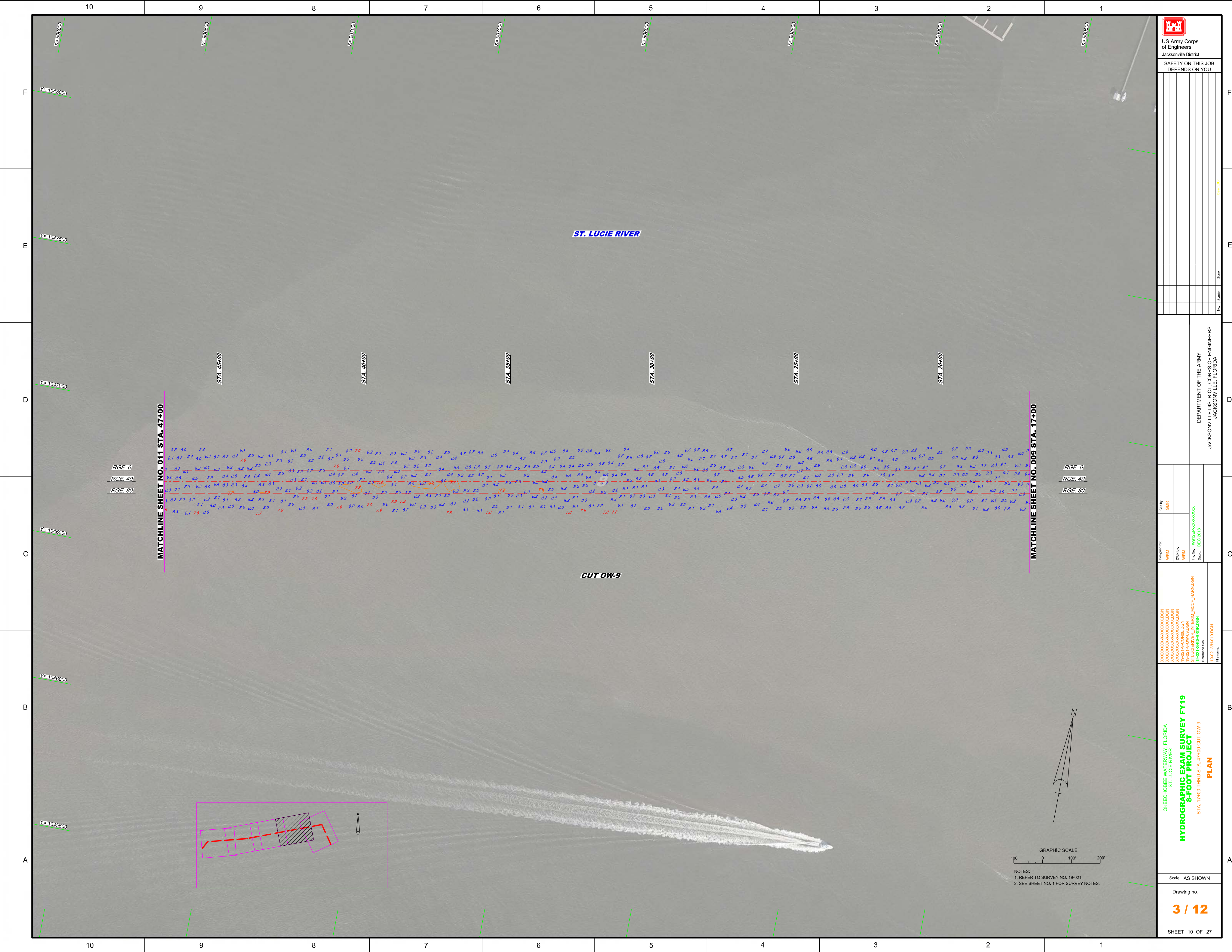
SURVEY NOTES

1. REFER TO SURVEY NO. 19-021.
 2. TIDAL REDUCTIONS WERE OBTAINED UTILIZING A REAL-TIME KINEMATIC (RTK) GPS WITH A KINEMATIC TIDE DATUM (KT) MODEL. KTD FILE NAME IS: "INDIANRIVER-STLUCIE-MARTIN_20140527.KTD".
 3. ALL ELEVATIONS ARE BELOW THE CHART DATUM UNLESS PRECEDED BY A (+) SIGN.
 4. PLANE COORDINATES ARE BASED ON THE TRANSVERSE MERCATOR PROJECTION FOR THE EAST ZONE OF FLORIDA AND REFERENCED TO NORTH AMERICAN DATUM OF 1983 (NAD83), BASED ON THE NOAA NATIONAL SPATIAL REFERENCE SYSTEM (NSRS).
 5. ALL STATIONING REFERS TO THE CENTERLINE OF THE CHANNEL.
 6. THIS SURVEY WAS PERFORMED USING REAL-TIME KINEMATIC GPS POSITIONING WITH THE FOLLOWING REFERENCE BASE LOCATION:
 T 693
 PID: BBFH83
 DEPTHS DEPICTED BY THIS SURVEY ARE REFERENCED TO MLLW, TIDAL EPOCH 1983-2001, AS REPORTED BY THE NATIONAL OCEANIC AND ATMOSPHERIC ADMINISTRATION (NOAA). A MODIFIED VERSION OF NOAA'S VDATUM MODEL WAS USED TO CALIBRATE TO THE PUBLISHED MLLW HEIGHTS OF THE BENCH MARK BELOW.
 NOAA TIDAL STATION 872-2381
 7. VERTICAL MEASUREMENTS WERE MADE USING AN EDGETECH 6205 COMBINED MULTIBEAM AND SIDESCAN AND A ROSS SMARTSOUNDER DUAL FREQUENCY 28/200 KHZ SINGLE-BEAM TRANSDUCER. ALL SOUNDINGS SHOWN ARE IN HIGH FREQUENCY.
- | VESSEL | DATE OF SURVEY | CUT |
|--------|------------------|------------|
| SB-48 | 08 DECEMBER 2018 | 09 THRU 13 |
| SB-48 | 09 DECEMBER 2018 | 13 THRU 19 |
8. AIDS TO NAVIGATION WERE LOCATED DURING THIS SURVEY.
 9. THE INFORMATION DEPICTED ON THIS MAP REPRESENTS THE RESULTS OF SURVEYS MADE ON THE DATES INDICATED ABOVE AND CAN ONLY BE CONSIDERED AS INDICATING THE GENERAL CONDITIONS AT THAT TIME. THIS CHART IS SOLELY FOR THE DISTRIBUTION OF AVAILABLE DEPTHS AT THE TIME OF THE SURVEY AND IS NOT TO BE USED FOR NAVIGATION.
 10. SURVEY ACCURACY PERFORMANCE STANDARDS, QUALITY CONTROL, AND QUALITY ASSURANCE REQUIREMENTS WERE FOLLOWED DURING THIS SURVEY IN ACCORDANCE WITH USACE EM 1110-2-1003, HYDROGRAPHIC SURVEYING, 30 NOV 2013.

LEGEND	
▲	MONUMENT
⚓	LIGHTED BEACON
■	GREEN DAYBEACON
▲	RED DAYBEACON
●	RED LIGHTED BUOY
●	GREEN LIGHTED BUOY
○	CAN BUOY
⚓	NUN BUOY
⚓	TIDE STAFF
8	PROJECT DEPTH

US Army Corps of Engineers
Jacksonville District
SAFETY ON THIS JOB
DEPENDS ON YOU

	DEPARTMENT OF THE ARMY JACKSONVILLE DISTRICT, CORPS OF ENGINEERS JACKSONVILLE, FLORIDA
	Drawn by: GMR Designed by: WRM DWN by: WRM File No: W82P25-00-00-000 Project No: ST-LUCIE-RIVER-INTERIM-LOGG-HARN-00N Reference Mark: 19-021-19-000-LOGN File Name:
HYDROGRAPHIC EXAM SURVEY FY19 8-FOOT PROJECT INDEX, LOCATION AND VICINITY PLAN	
Scale: AS SHOWN Drawing no. 1 / 12	
SHEET 01 OF 27	



DEPARTMENT OF THE ARMY
 JACKSONVILLE DISTRICT, CORPS OF ENGINEERS
 JACKSONVILLE, FLORIDA

Designed by: WRM
 Drawn by: WRM
 Checked by: WRM
 Date: DEC 2018

OKEECHOBEE WATERWAY, FLORIDA
 ST. LUCIE RIVER
HYDROGRAPHIC EXAM SURVEY FY19
8-FOOT PROJECT
 STA. 17+00 THRU STA. 47+00 CUT OW-9
PLAN

MATCHLINE SHEET NO. 011 STA. 47+00

MATCHLINE SHEET NO. 009 STA. 17+00

RGE. 0
 RGE. 40
 RGE. 80

RGE. 0
 RGE. 40
 RGE. 80

ST. LUCIE RIVER

CUT OW-9

STA. 45+00

STA. 40+00

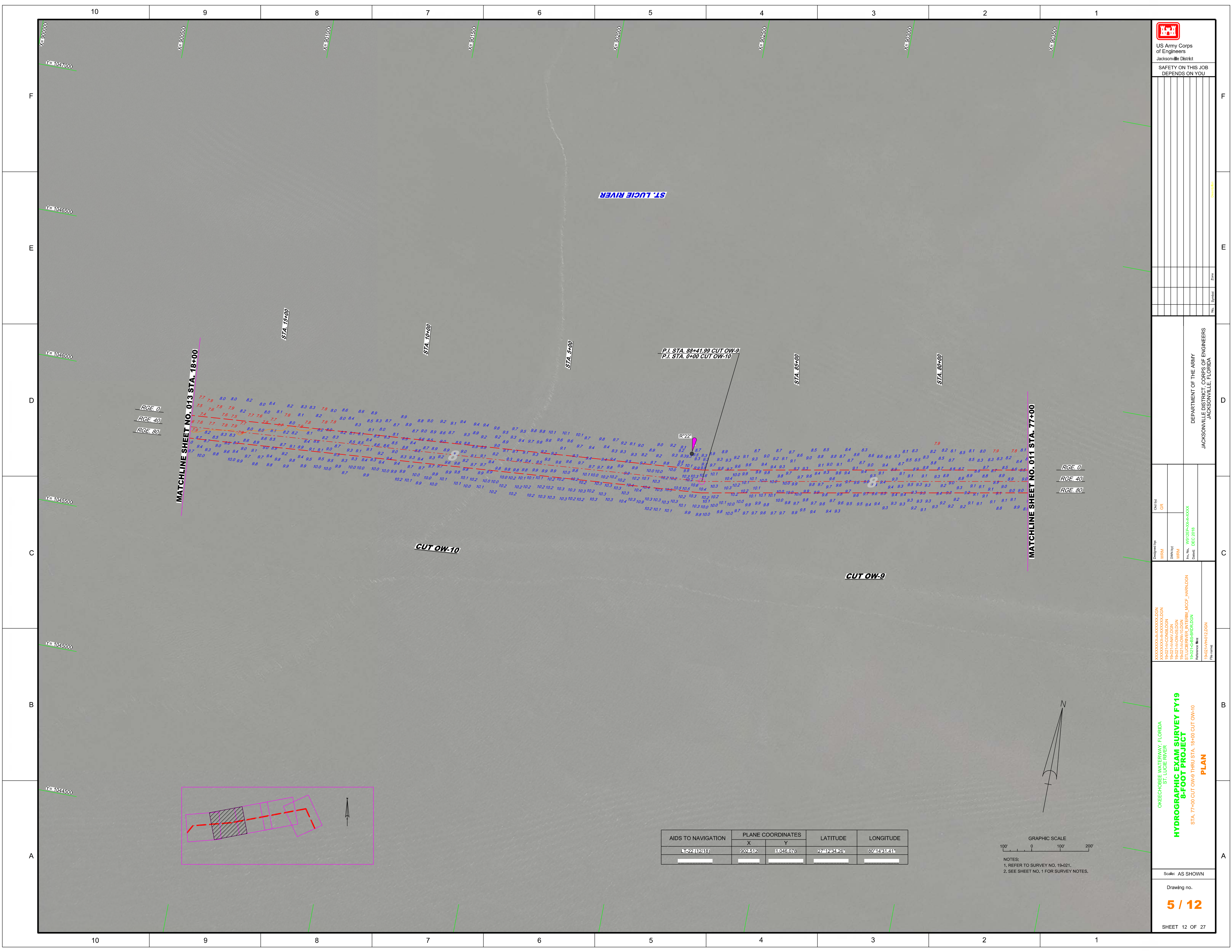
STA. 35+00

STA. 30+00

STA. 25+00

STA. 20+00

GRAPHIC SCALE
 100' 0 100' 200'
 NOTES:
 1. REFER TO SURVEY NO. 19-021.
 2. SEE SHEET NO. 1 FOR SURVEY NOTES.

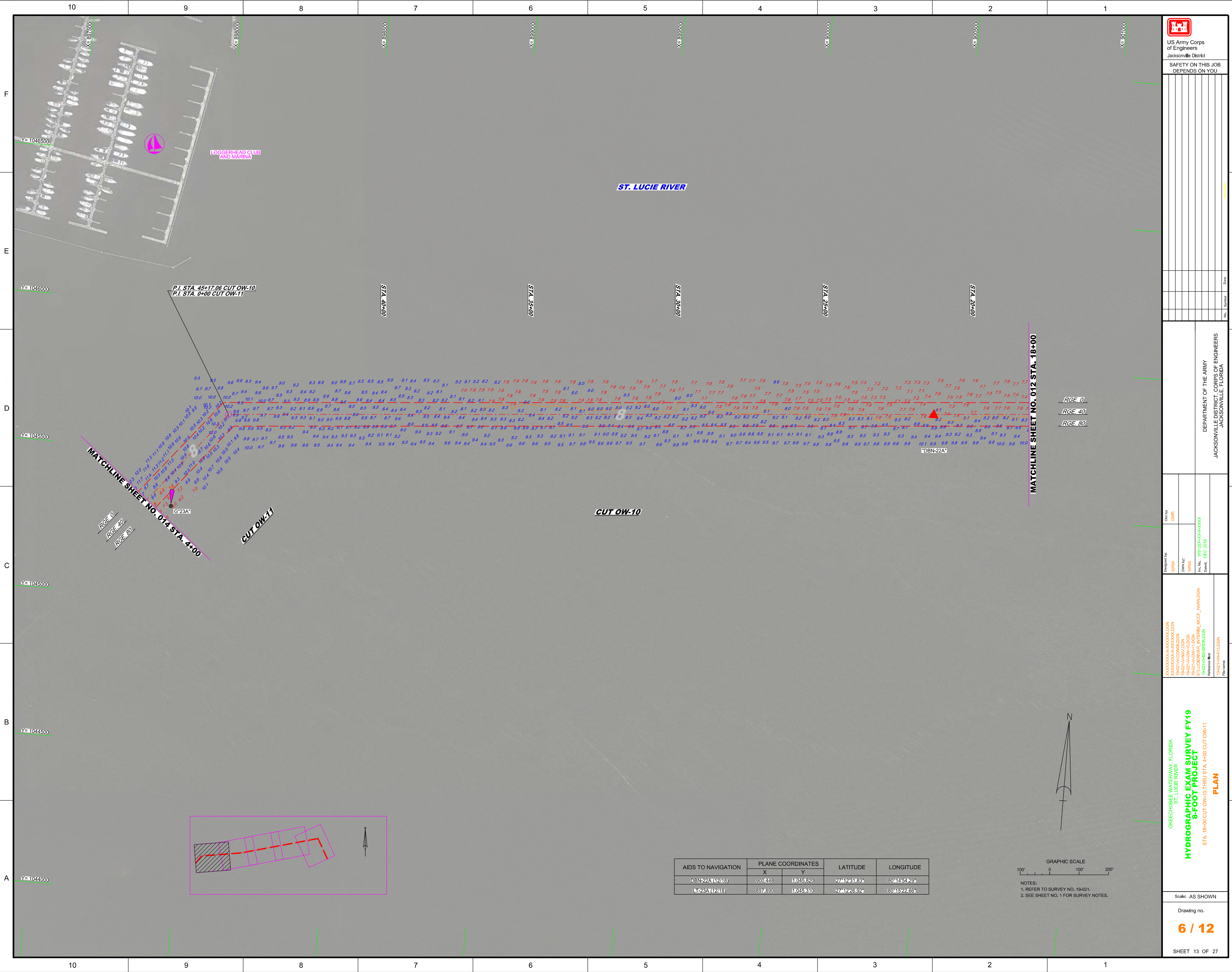


Designed by: WRM
Checked by: GRL
Drawn by: WRM
File No: W812EP-000-0000
Date: DEC 2018

OKEECHOBEE WATERWAY, FLORIDA
ST. LUCIE RIVER
HYDROGRAPHIC EXAM SURVEY FY19
8-FOOT PROJECT
STA. 77+00 CUT OW-9 THRU STA. 18+00 CUT OW-10
PLAN

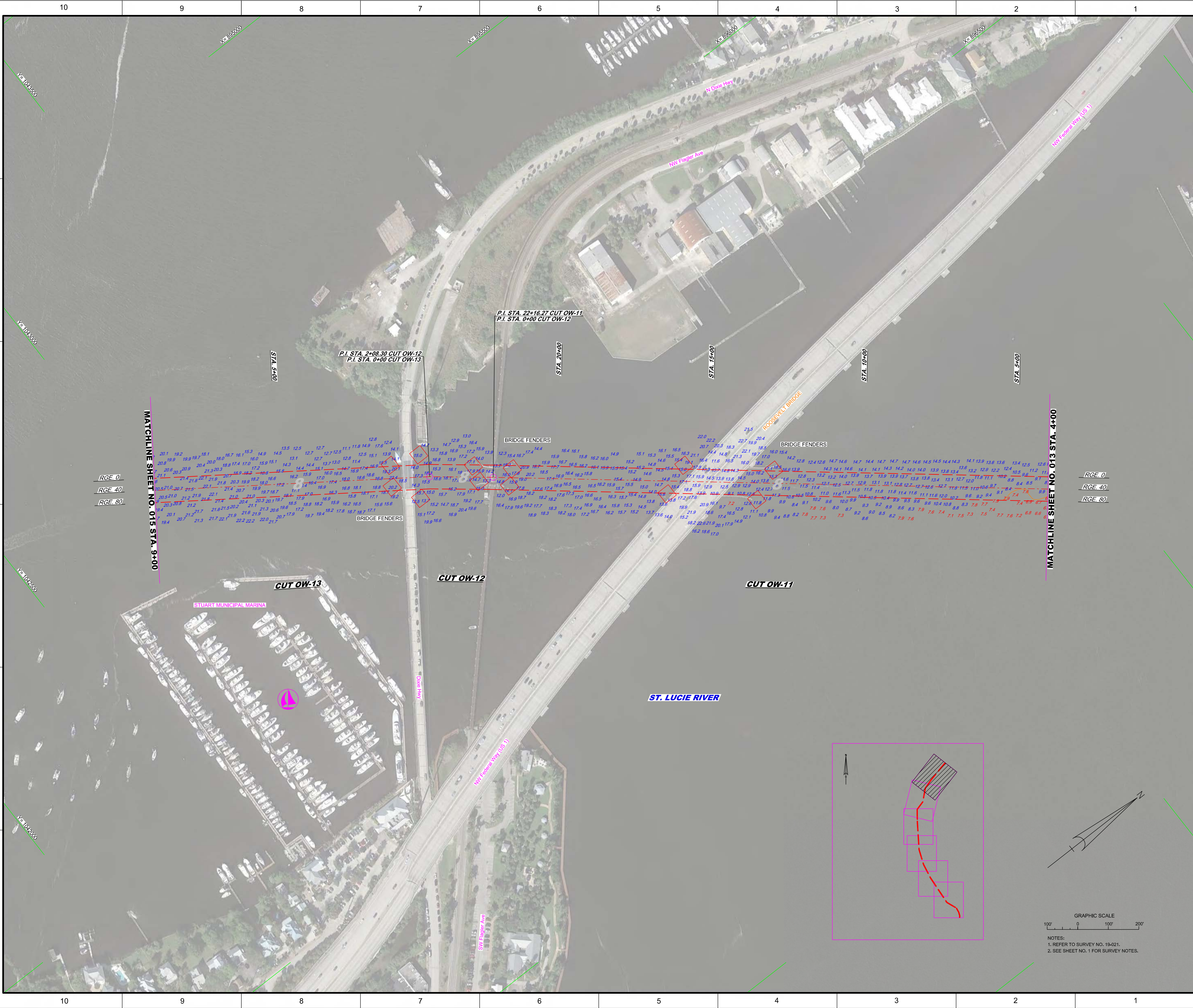
AIDS TO NAVIGATION	PLANE COORDINATES		LATITUDE	LONGITUDE
	X	Y		
1221 (12/18)	902512	11046078	27°12'34.26"	80°14'31.41"

GRAPHIC SCALE
100' 0 100' 200'
NOTES:
1. REFER TO SURVEY NO. 19-021.
2. SEE SHEET NO. 1 FOR SURVEY NOTES.

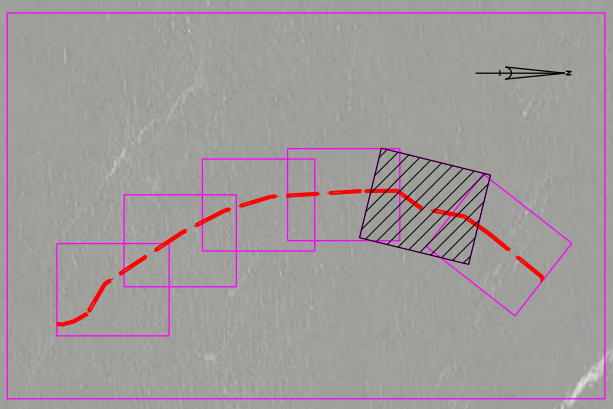
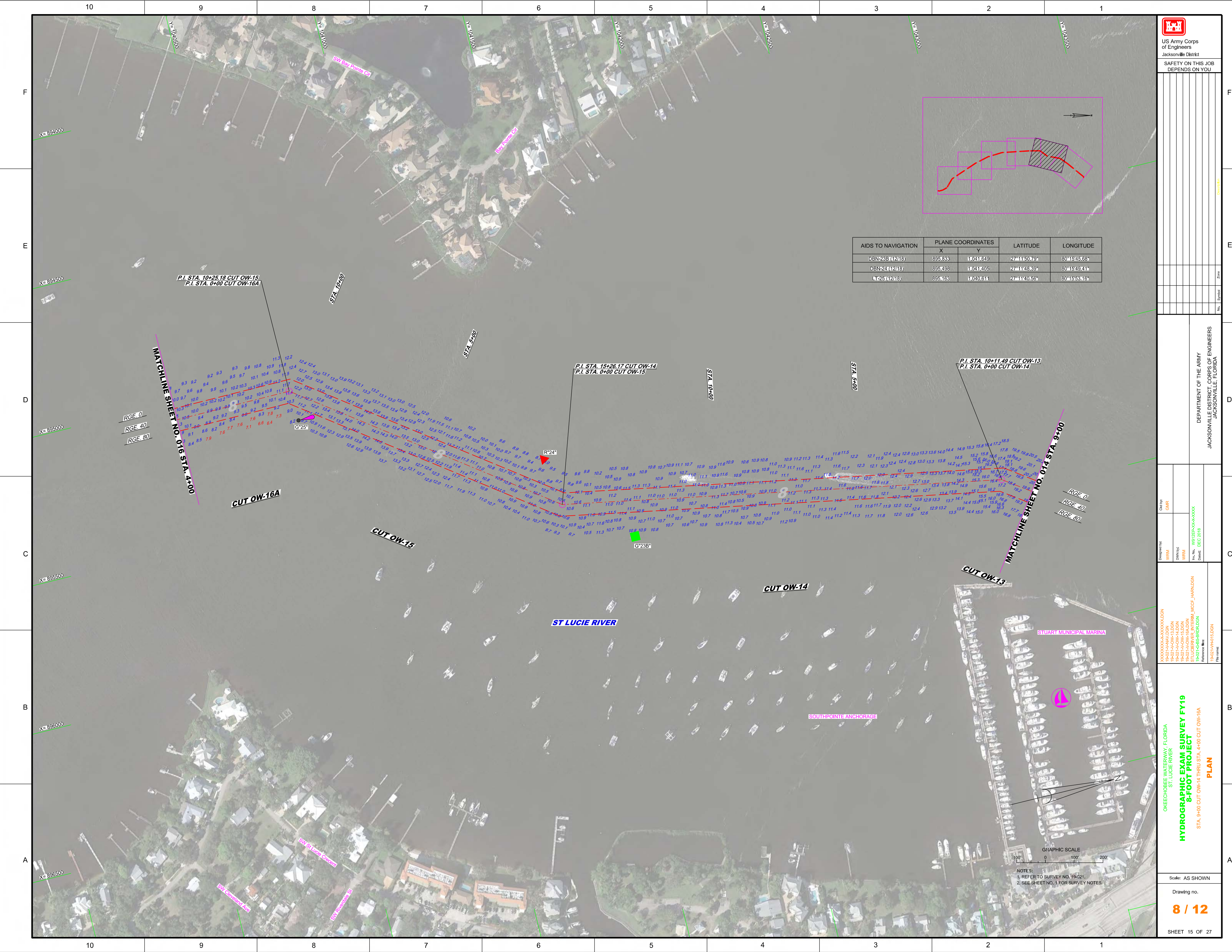


AIDS TO NAVIGATION	PLANE COORDINATES		LATITUDE	LONGITUDE
	X	Y		
DBN-22A(1218)	900448	11045820	27°42'31.83"	80°41'54.28"
G-23A(1218)	897890	11045810	27°42'28.92"	80°41'52.65"

GRAPHIC SCALE
100' 0 100 200'
NOTES:
1. REFER TO SURVEY NO. 19-021.
2. SEE SHEET NO. 1 FOR SURVEY NOTES.



GRAPHIC SCALE
 100' 0 100' 200'
 NOTES:
 1. REFER TO SURVEY NO. 19-021.
 2. SEE SHEET NO. 1 FOR SURVEY NOTES.



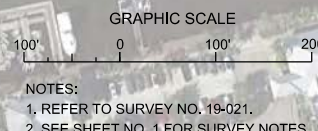
AIDS TO NAVIGATION	PLANE COORDINATES		LATITUDE	LONGITUDE
	X	Y		
DBN-233(12/18)	895.883	10241.649	27°41'50.79"	80°15'45.68"
DBN-241(12/18)	895.498	10241.405	27°41'48.39"	80°15'49.41"
DBN-244(12/18)	895.163	10240.611	27°41'44.05"	80°15'53.16"

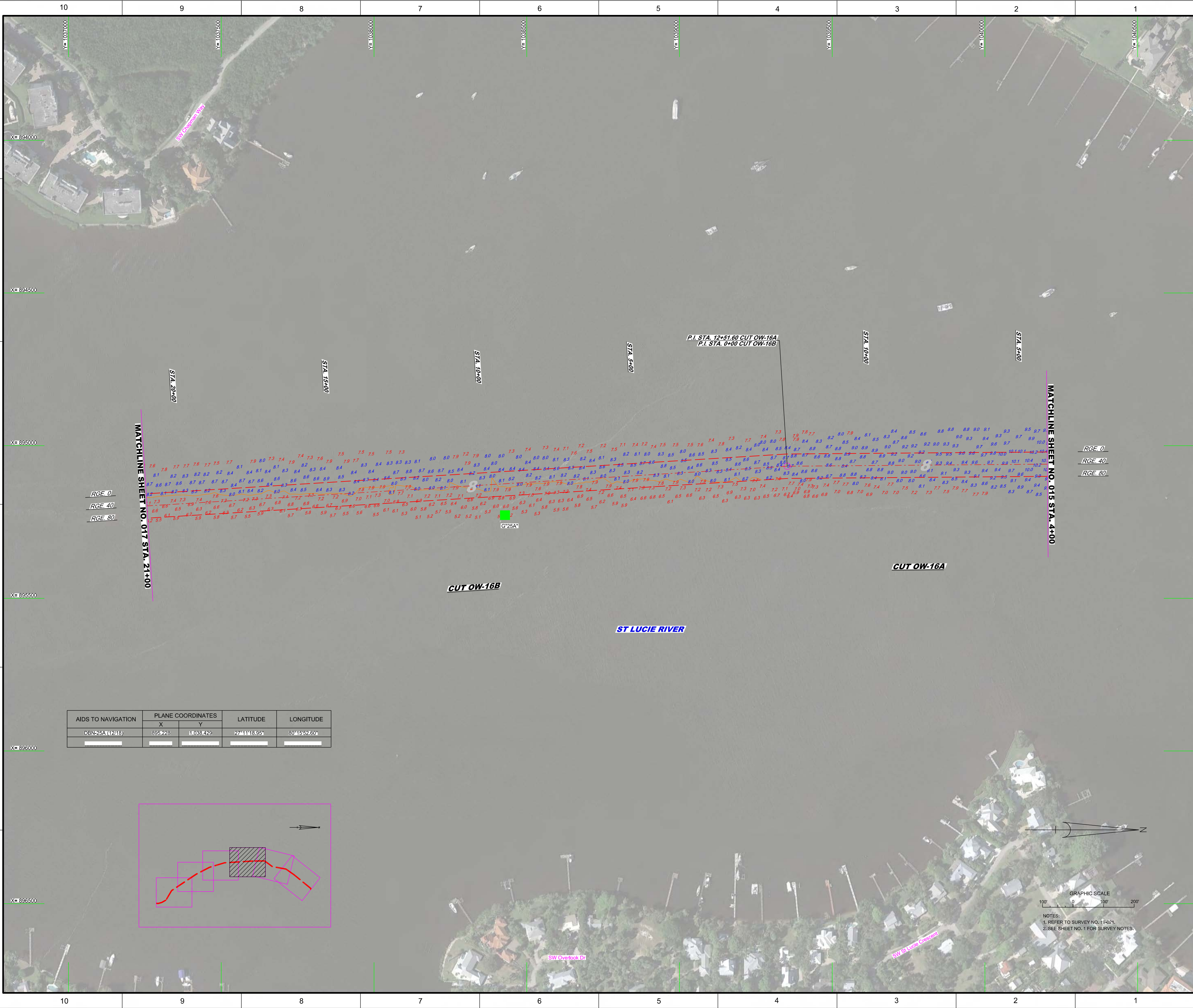
DEPARTMENT OF THE ARMY
JACKSONVILLE DISTRICT, CORPS OF ENGINEERS
JACKSONVILLE, FLORIDA

Client: GMR
Designed by: WRM
Drawn by: WRM
Checked by: WRM
Date: DEC 2018
Reference File: 18021A-CUT-OW-14.DGN
18021A-CUT-OW-15.DGN
18021A-CUT-OW-16A.DGN
18021A-CUT-OW-13.DGN
18021A-CUT-OW-14.DGN
18021A-CUT-OW-15.DGN
18021A-CUT-OW-16A.DGN
18021A-CUT-OW-13.DGN


OKEECHOBEE WATERWAY, FLORIDA
ST. LUCIE RIVER
**HYDROGRAPHIC EXAM SURVEY FY19
8-FOOT PROJECT**
STA. 9+00 CUT OW-14 THRU STA. 4+00 CUT OW-16A
PLAN

Scale: AS SHOWN
Drawing no. **8 / 12**
SHEET 15 OF 27





AIDS TO NAVIGATION	PLANE COORDINATES		LATITUDE	LONGITUDE
	X	Y		
DBN25A (12418)	895228	1038428	27°11'18.95"	80°15'52.60"



US Army Corps
of Engineers
Jacksonville District

SAFETY ON THIS JOB
DEPENDS ON YOU

DEPARTMENT OF THE ARMY
JACKSONVILLE DISTRICT, CORPS OF ENGINEERS
JACKSONVILLE, FLORIDA

Drawn by: GRL
Checked by: GRL

Designed by: WRM
DWG No: W812P-000-0000
Rev. No: W812P-000-0000
Date: DEC 2018

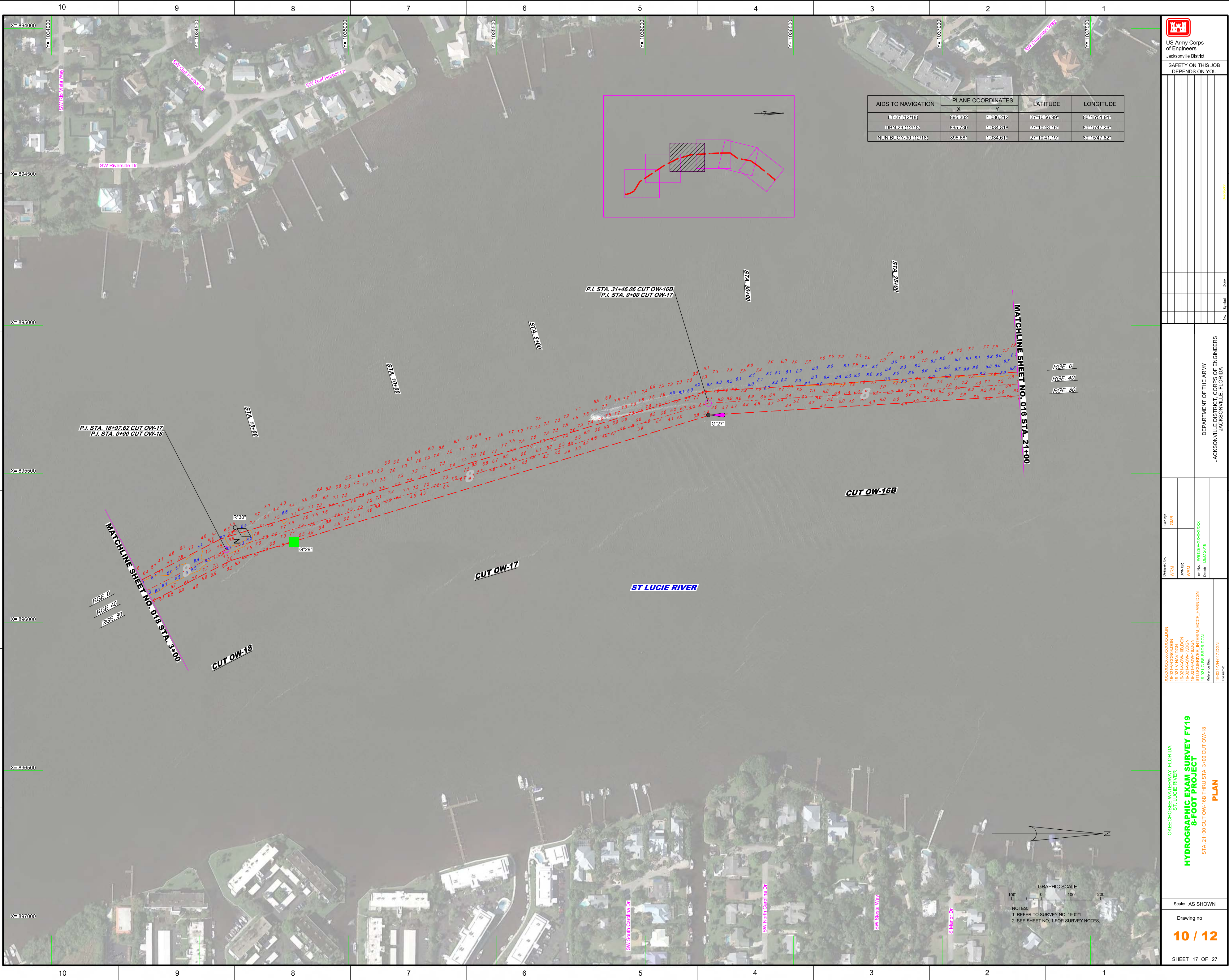
XXXXXXXXXXXXXXXXXXXXX.DGN
XXXXXXXXXXXXXXXXXXXXX.DGN
XXXXXXXXXXXXXXXXXXXXX.DGN
18021A-OW-16A.DGN
ST LUCIE RIVER INTERM. WCF - HAWKDON
18021C-BS-810A.DGN
Reference files:
18021A-H01.DGN

OKEECHOBEE WATERWAY, FLORIDA
ST. LUCIE RIVER
HYDROGRAPHIC EXAM SURVEY FY19
8-FOOT PROJECT
STA. 4+00 CUT OW-16A THRU STA. 21+00 CUT OW-16B
PLAN

Scale: AS SHOWN

Drawing no.
9 / 12

SHEET 16 OF 27



AIDS TO NAVIGATION	PLANE COORDINATES		LATITUDE	LONGITUDE
	X	Y		
LT 27 (12/18)	895,302	1,036,212	27°10'55.99"	80°15'41.91"
DBN 29 (12/18)	895,730	1,034,818	27°10'43.16"	80°15'47.26"
NUN BUOY 30 (12/18)	895,681	1,034,619	27°10'41.139"	80°15'47.82"

US Army Corps of Engineers

 Jacksonville District

 SAFETY ON THIS JOB

 DEPENDS ON YOU

DEPARTMENT OF THE ARMY

 JACKSONVILLE DISTRICT, CORPS OF ENGINEERS

 JACKSONVILLE, FLORIDA

XXXXXXXXXXXXXXXXXXXX

 19-02-1A-COM-000.DGN

 19-02-1A-COM-188.DGN

 19-02-1A-COM-17.DGN

 19-02-1A-COM-17.DGN

 19-02-1A-COM-17.DGN

 19-02-1A-COM-17.DGN

 19-02-1A-COM-17.DGN

 19-02-1A-COM-17.DGN

 19-02-1A-COM-17.DGN

 19-02-1A-COM-17.DGN

OKEECHOBEE WATERWAY, FLORIDA

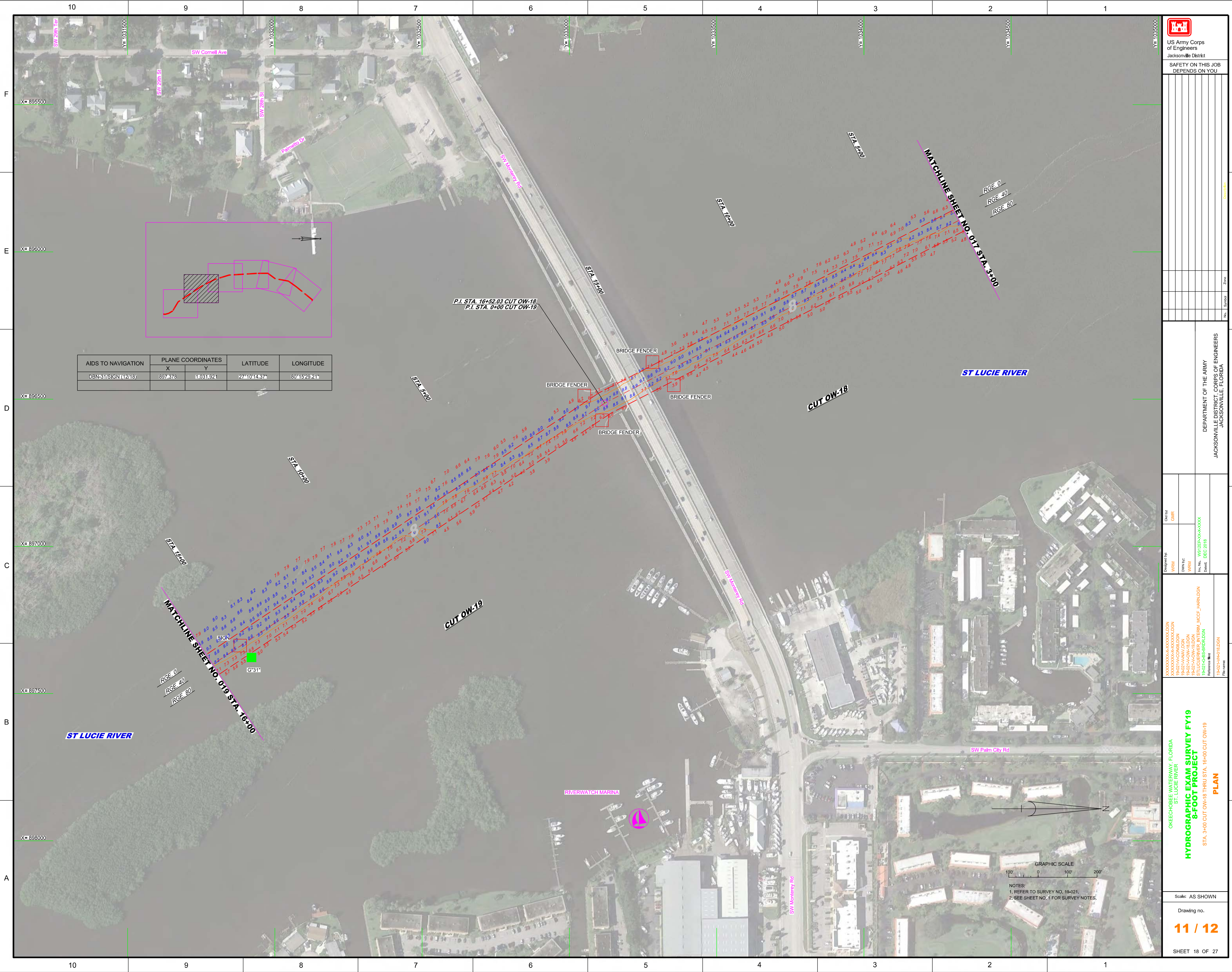
 ST. LUCIE RIVER

HYDROGRAPHIC EXAM SURVEY FY19

8-FOOT PROJECT

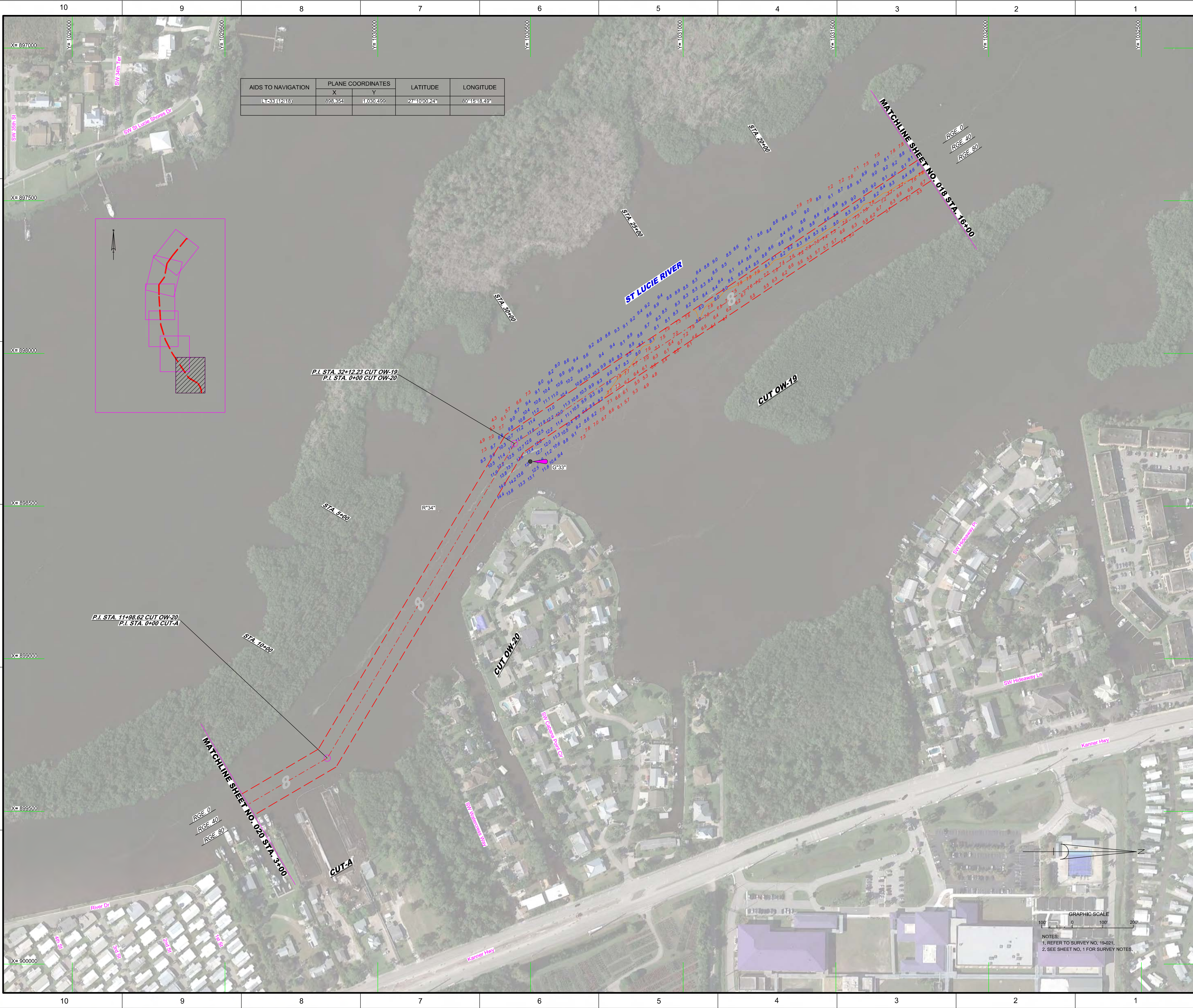
 STA. 21+00 CUT OW-16B THRU STA. 3+00 CUT OW-18

PLAN

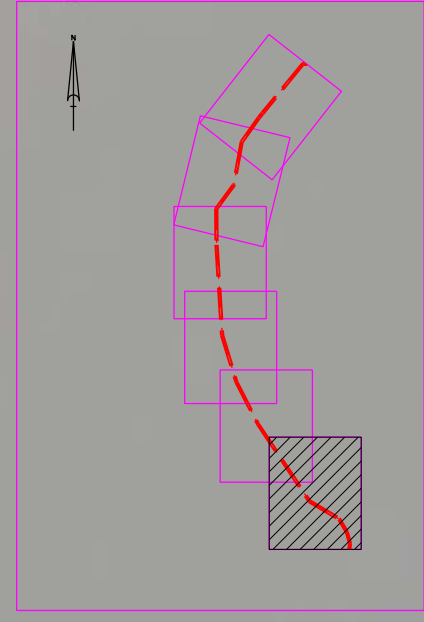


AIDS TO NAVIGATION	PLANE COORDINATES		LATITUDE	LONGITUDE
	X	Y		
DBN-31/SIGN (12/18)	897,378	1,031,921	27°10'14.37"	80°15'29.21"

GRAPHIC SCALE
 100' 0 100' 200'
 NOTES:
 1. REFER TO SURVEY NO. 18-021.
 2. SEE SHEET NO. 1 FOR SURVEY NOTES.



AIDS TO NAVIGATION	PLANE COORDINATES		LATITUDE	LONGITUDE
	X	Y		
LT-33(12/18)	898354	11030499	27°10'00.24"	80°15'18.49"




P.I. STA. 32+12.23 CUT OW-19
P.I. STA. 0+00 CUT OW-20

P.I. STA. 11+98.62 CUT OW-20
P.I. STA. 0+00 CUT-A

GRAPHIC SCALE
100 0 100 200

NOTES:
1. REFER TO SURVEY NO. 19-021.
2. SEE SHEET NO. 1 FOR SURVEY NOTES.



US Army Corps of Engineers
Jacksonville District

SAFETY ON THIS JOB
DEPENDS ON YOU

DEPARTMENT OF THE ARMY
JACKSONVILLE DISTRICT, CORPS OF ENGINEERS
JACKSONVILLE, FLORIDA

Drawn by: GMR
Checked by: WRM
Designed by: WRM
File No.: W812P-00-00-00-00-00
Date: DEC 2018

XXXXXXXXXXXXXXXXXXXX
19-021-A-000000.DGN
19-021-A-000000.DGN
19-021-A-000000.DGN
19-021-A-000000.DGN
19-021-A-000000.DGN
Reference files:
19-021-A-000000.DGN

ORISECHOCHEE WATERWAY, FLORIDA
ST. LUCIE RIVER

**HYDROGRAPHIC EXAM SURVEY FY19
8-FOOT PROJECT**

STA. 16+00 CUT OW-19 THRU STA. 3+00 CUT-A

PLAN

Scale: AS SHOWN

Drawing no.
12 / 12

SHEET 19 OF 27