

IWW - JACKSONVILLE TO MIAMI CUTS SJ-28 THRU SJ-30A / FLOOD SHOAL ST JOHNS COUNTY, FL HYDROGRAPHIC EXAM SURVEY FY19 12-FOOT PROJECT

LEGEND	
	MONUMENT
	LIGHTED BEACON
	GREEN DAYBEACON
	RED DAYBEACON
	RED LIGHTED BUOY
	GREEN LIGHTED BUOY
	CAN BUOY
	NUN BUOY
	TIDE STAFF
8	PROJECT DEPTH

SURVEY NOTES

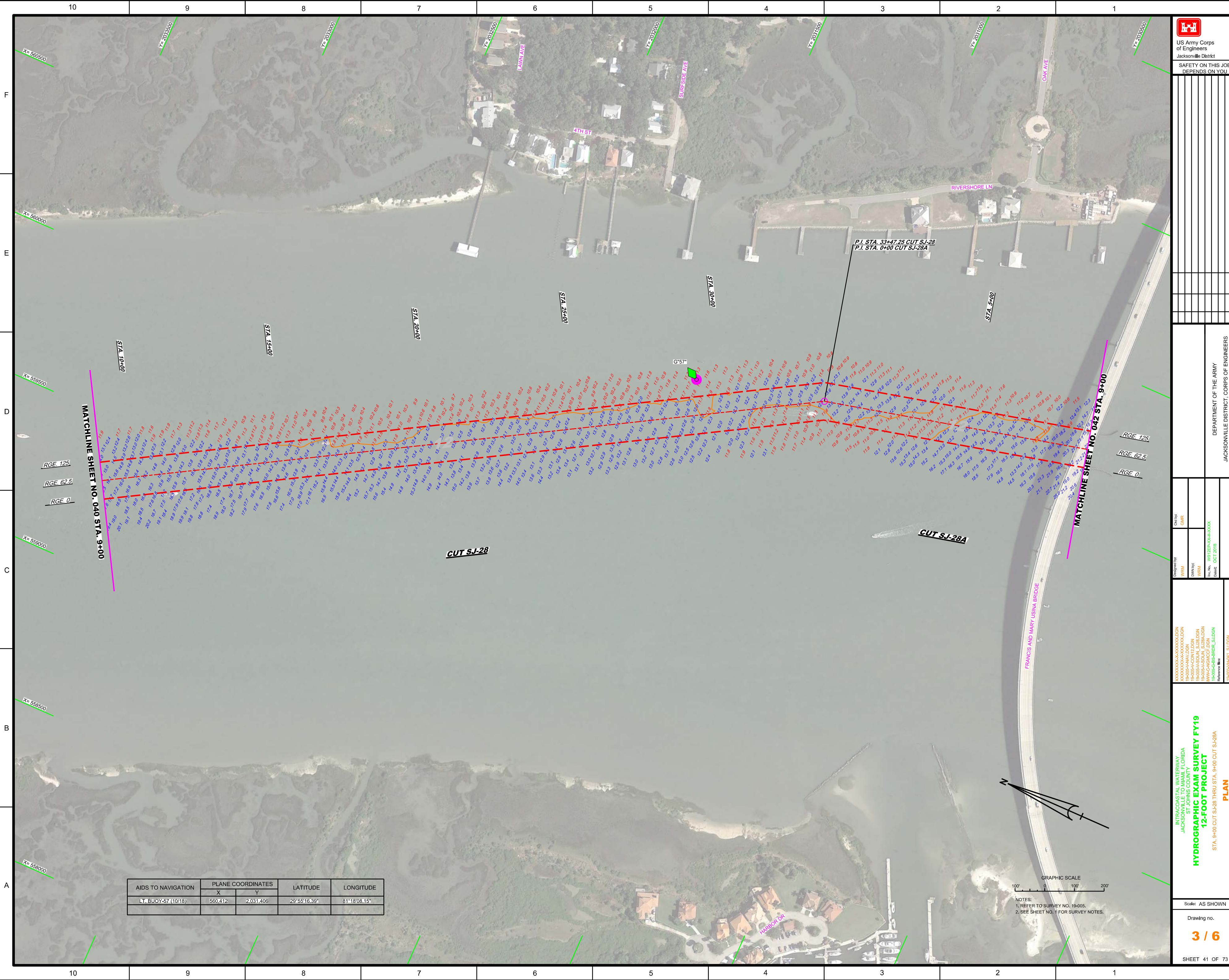
- REFER TO SURVEY NO. 19-005.
- SOUNDINGS ARE IN FEET AND TENTHS AND REFER TO NOAA'S REPORTED MEAN LOWER LOW WATER (MLLW) OF THE 1983-2001 TIDAL EPOCH.
- TIDAL REDUCTIONS WERE OBTAINED UTILIZING A REAL-TIME KINEMATIC (RTK) GPS AND REFERENCED TO MLLW UTILIZING A HYPACK KINEMATIC TIDE DATUM (KTD) MODEL. KTD FILE NAME IS: "CAMDENGA-NASSAU-DUVAL-STJOHNS-FLAGLER-01FEB2011.KTD".
- ALL ELEVATIONS ARE BELOW THE CHART DATUM UNLESS PRECEDED BY A (+) SIGN.
- PLANE COORDINATES ARE BASED ON THE TRANSVERSE MERCATOR PROJECTION FOR THE EAST ZONE OF FLORIDA AND REFERENCED TO NORTH AMERICAN DATUM OF 1983 (NAD83).
- ALL STATIONING REFERS TO THE CENTERLINE OF THE CHANNEL.
- THIS SURVEY WAS PERFORMED USING REAL-TIME KINEMATIC (RTK) GPS POSITIONING WITH THE FOLLOWING REFERENCE BASE LOCATIONS:
REFERENCE BASE LOCATED AT "RAMP RESET" (PID: BBCB11)
- DEPTHS DEPICTED BY THIS SURVEY ARE REFERENCED TO MLLW. TIDAL EPOCH 1983-2001 AS REPORTED BY THE NATIONAL OCEANIC AND ATMOSPHERIC ADMINISTRATION (NOAA). A MODIFIED VERSION OF NOAA'S VDATUM MODEL WAS USED TO CALIBRATE TO THE PUBLISHED MLLW HEIGHTS OF THE BENCHMARKS BELOW:
NOAA TIDAL STATION 872-0554 B USED FOR ENTIRE PROJECT (PID: DL5712)


VERTICAL MEASUREMENTS WERE MADE USING A ROSS SMARTSOUNDER DUAL-FREQUENCY (28/200 KHZ) SINGLE-BEAM TRANSDUCER. ALL SOUNDINGS SHOWN ARE IN HIGH FREQUENCY.

VESSEL	DATE OF SURVEY	CUT
SB-48	16 OCT 2018	SJ-28 THRU SJ-30A

- AIDS TO NAVIGATION WERE LOCATED DURING THIS SURVEY.
- THE INFORMATION DEPICTED ON THIS MAP REPRESENTS THE RESULTS OF SURVEYS MADE ON THE DATES INDICATED ABOVE AND CAN ONLY BE CONSIDERED AS INDICATING THE GENERAL CONDITIONS AT THAT TIME. THIS CHART IS SOLELY FOR THE DISTRIBUTION OF AVAILABLE DEPTHS AT THE TIME OF THE SURVEY.
- SURVEY ACCURACY PERFORMANCE STANDARDS, QUALITY CONTROL, AND QUALITY ASSURANCE REQUIREMENTS WERE FOLLOWED DURING THIS SURVEY IN ACCORDANCE WITH USACE EM 1110-2-1003, HYDROGRAPHIC SURVEYING, 30 NOV 13.

 US Army Corps of Engineers Jacksonville District SAFETY ON THIS JOB DEPENDS ON YOU		
DEPARTMENT OF THE ARMY JACKSONVILLE DISTRICT, CORPS OF ENGINEERS JACKSONVILLE, FLORIDA		
Checked by: GHR Designed by: WRM Drawn by: WRM File No: W0225-00-000000 Date: OCT 2018 Reference File: I:\0056-1007_L_SUDGN		
HYDROGRAPHIC EXAM SURVEY FY19 12-FOOT PROJECT INDEX, LOCATION AND VICINITY MAP		
Scale: AS SHOWN Drawing no. 1 / 6 SHEET 01 OF 73		




 US Army Corps of Engineers
 Jacksonville District
 SAFETY ON THIS JOB
 DEPENDS ON YOU

DEPARTMENT OF THE ARMY
 JACKSONVILLE DISTRICT, CORPS OF ENGINEERS
 JACKSONVILLE, FLORIDA

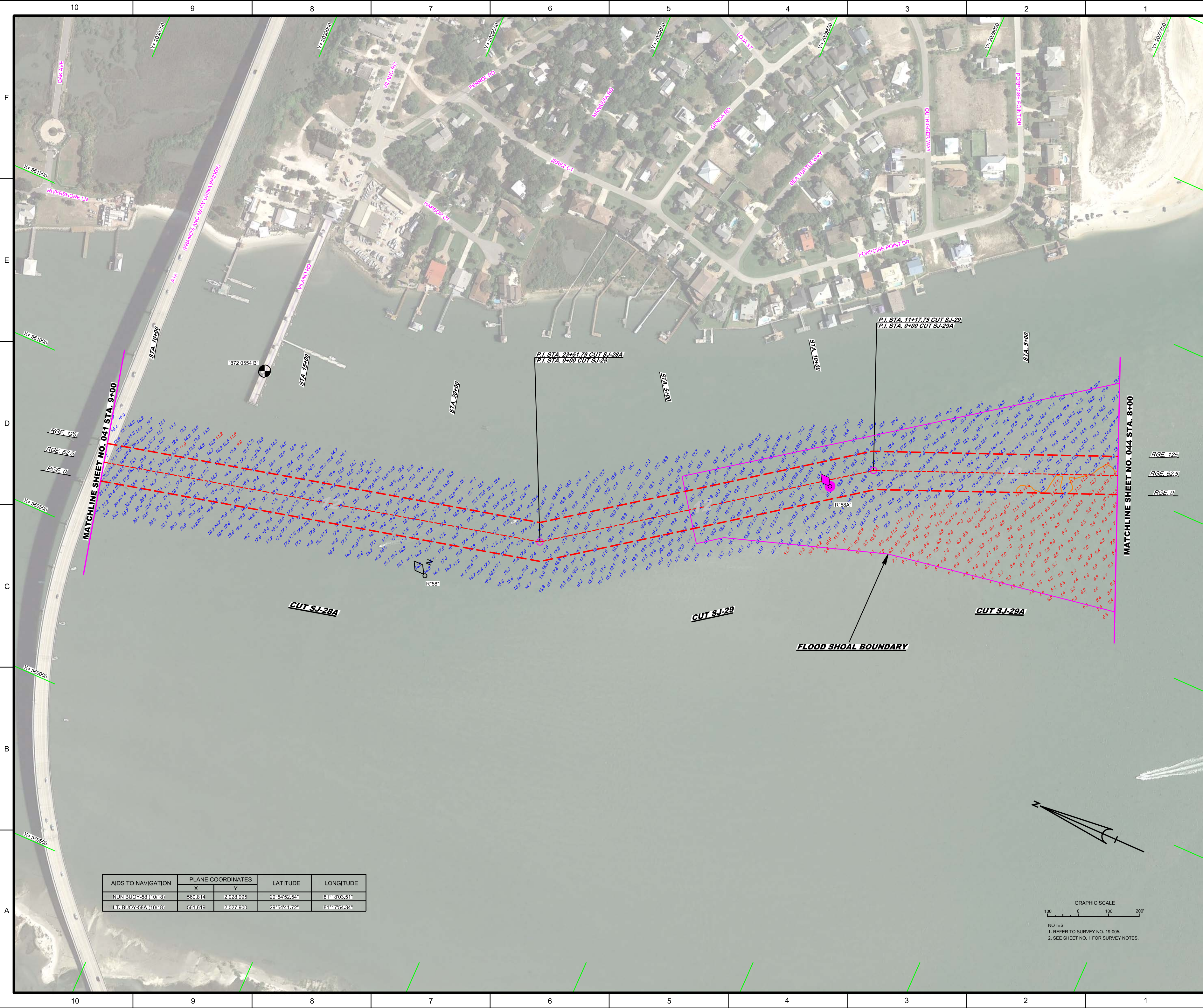
Checked by: GHR
 Designed by: WRM
 Drawn by: WRM
 File No: W12255-000-0000
 Date: OCT 2018

INTRACOASTAL WATERWAY
 JACKSONVILLE TO MIAMI, FLORIDA
 ST. JOHNS COUNTY
HYDROGRAPHIC EXAM SURVEY FY19
12-FOOT PROJECT
 STA. 9+00 CUT SJ-28 THRU STA. 9+00 CUT SJ-28A
PLAN

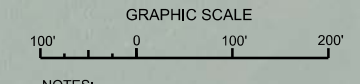
Scale: AS SHOWN
 Drawing no.
3 / 6
 SHEET 41 OF 73

AIDS TO NAVIGATION	PLANE COORDINATES		LATITUDE	LONGITUDE
	X	Y		
LT. BUOY-57 (10/18)	560412	2031406	29°55'16.39"	81°18'08.15"

GRAPHIC SCALE
 0 100 200
 NOTES:
 1. REFER TO SURVEY NO. 18-005.
 2. SEE SHEET NO. 1 FOR SURVEY NOTES.



AIDS TO NAVIGATION	PLANE COORDINATES		LATITUDE	LONGITUDE
	X	Y		
NUN BUOY-58 (1018)	560.814	2,028.995	29°54'52.54"	81°18'03.51"
LT. BUOY-58A (1018)	561.619	2,027.900	29°54'41.72"	81°17'54.34"



NOTES:
 1. REFER TO SURVEY NO. 19-005.
 2. SEE SHEET NO. 1 FOR SURVEY NOTES.

US Army Corps of Engineers
 Jacksonville District
SAFETY ON THIS JOB DEPENDS ON YOU

DESIGNED BY: WRM
 CHECKED BY: GHR
 DRAWN BY: WRM
 DATE: OCT 2018

DEPARTMENT OF THE ARMY
 JACKSONVILLE DISTRICT, CORPS OF ENGINEERS
 JACKSONVILLE, FLORIDA

PROJECT: INTRACOASTAL WATERWAY
 JACKSONVILLE TO MIAMI, FLORIDA
 ST. JOHNS COUNTY
HYDROGRAPHIC EXAM SURVEY FY19
12-FOOT PROJECT

FILE NAME: 19-005-PAHALZ_SUDGN
 PROJECT: 19-005-PAHALZ_SUDGN
 SURVEY: 19-005-PAHALZ_SUDGN
 DRAWING: 19-005-PAHALZ_SUDGN
 DATE: OCT 2018

STA. 9+00 CUT SJ-28A THRU STA. 9+00 CUT-29A

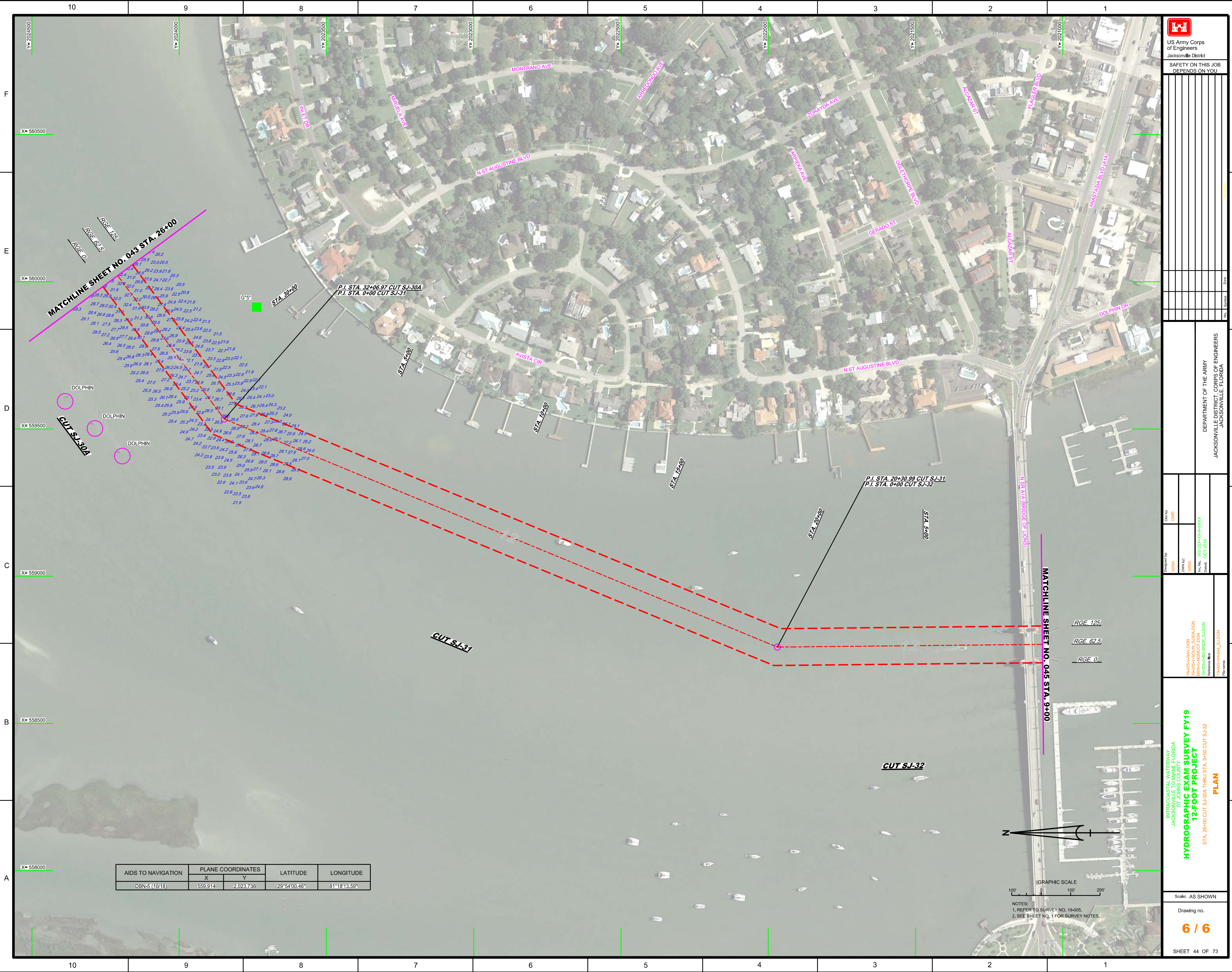
PLAN

Scale: AS SHOWN

Drawing no.
4 / 6

SHEET 42 OF 73

DATE: OCT 2018



MATCHLINE SHEET NO. 043 STA. 26+00

RGE 125
RGE 62.5
RGE 0

P.I. STA. 32+06.97 CUT SJ-30A
P.I. STA. 0+00 CUT SJ-31

P.I. STA. 20+30.99 CUT SJ-31
P.I. STA. 0+00 CUT SJ-32

MATCHLINE SHEET NO. 045 STA. 9+00

RGE 125
RGE 62.5
RGE 0

AIDS TO NAVIGATION	PLANE COORDINATES		LATITUDE	LONGITUDE
	X	Y		
DBN-5 (10/18)	559,914	2,023,736	29°54'00.46"	81°18'13.59"

GRAPHIC SCALE
100' 0 100' 200'

NOTES:
1. REFER TO SURVEY NO. 19-005.
2. SEE SHEET NO. 1 FOR SURVEY NOTES.

US Army Corps of Engineers
Jacksonville District

SAFETY ON THIS JOB
DEPENDS ON YOU

DEPARTMENT OF THE ARMY
JACKSONVILLE DISTRICT, CORPS OF ENGINEERS
JACKSONVILLE, FLORIDA

Drawn by: **WRM**
Checked by: **GHR**

Project No: **19-005-HAV/DCN**
Task No: **19-005-CB-BR/RS_SUDGN**
Revision: **19-005-HAV/DCN**
Date: **OCT 2018**

**INTRACOASTAL WATERWAY
JACKSONVILLE TO MIAMI, FLORIDA
ST. JOHNS COUNTY
HYDROGRAPHIC EXAM SURVEY FY19
12-FOOT PROJECT
STA. 26+00 CUT SJ-30A THRU STA. 9+00 CUT SJ-32
PLAN**

Scale: AS SHOWN

Drawing no. **6 / 6**

SHEET 44 OF 73